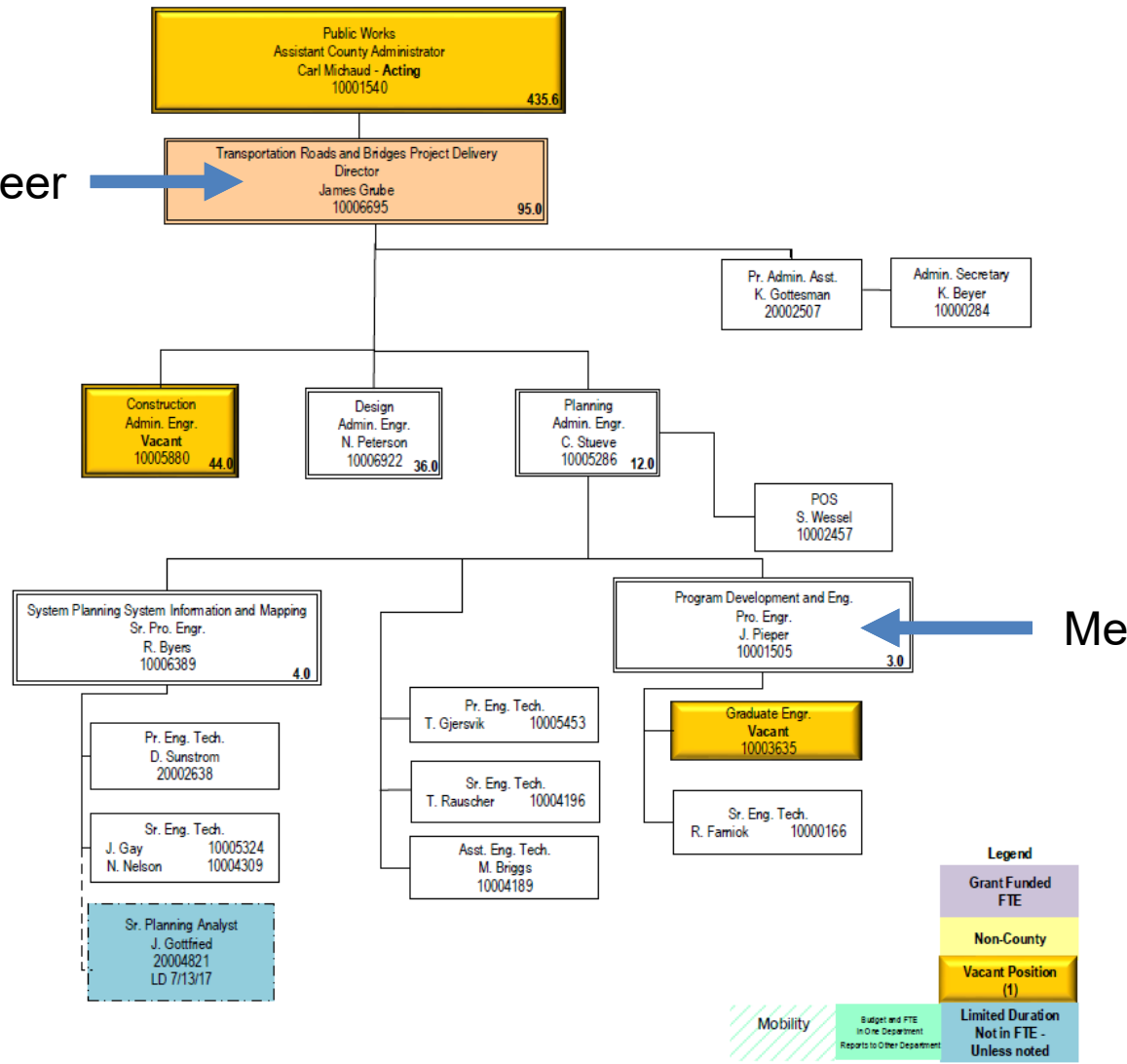


Father Hennepin County



Jason Pieper, E.I.T.
Transportation Planning

Jim Grube, County Engineer

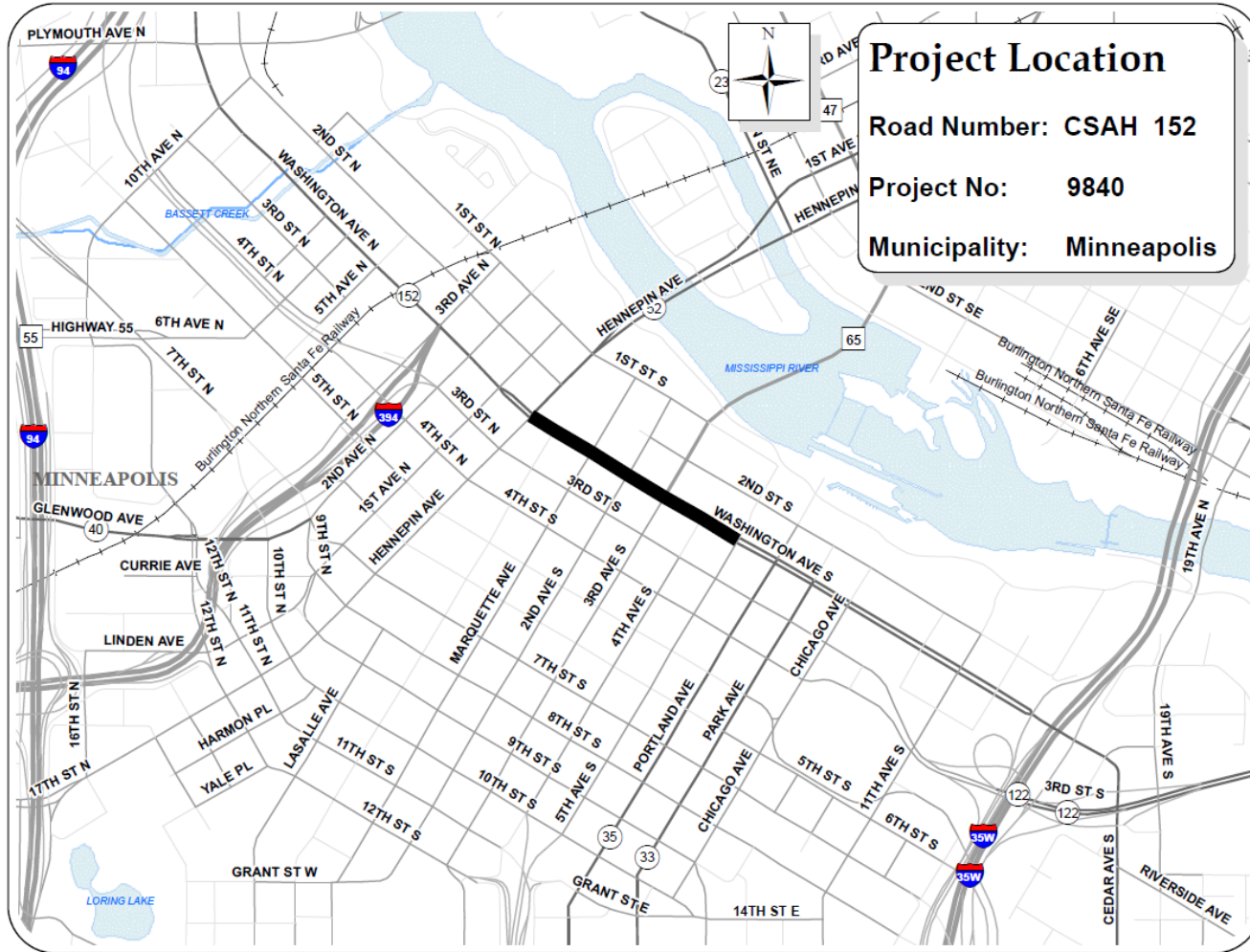


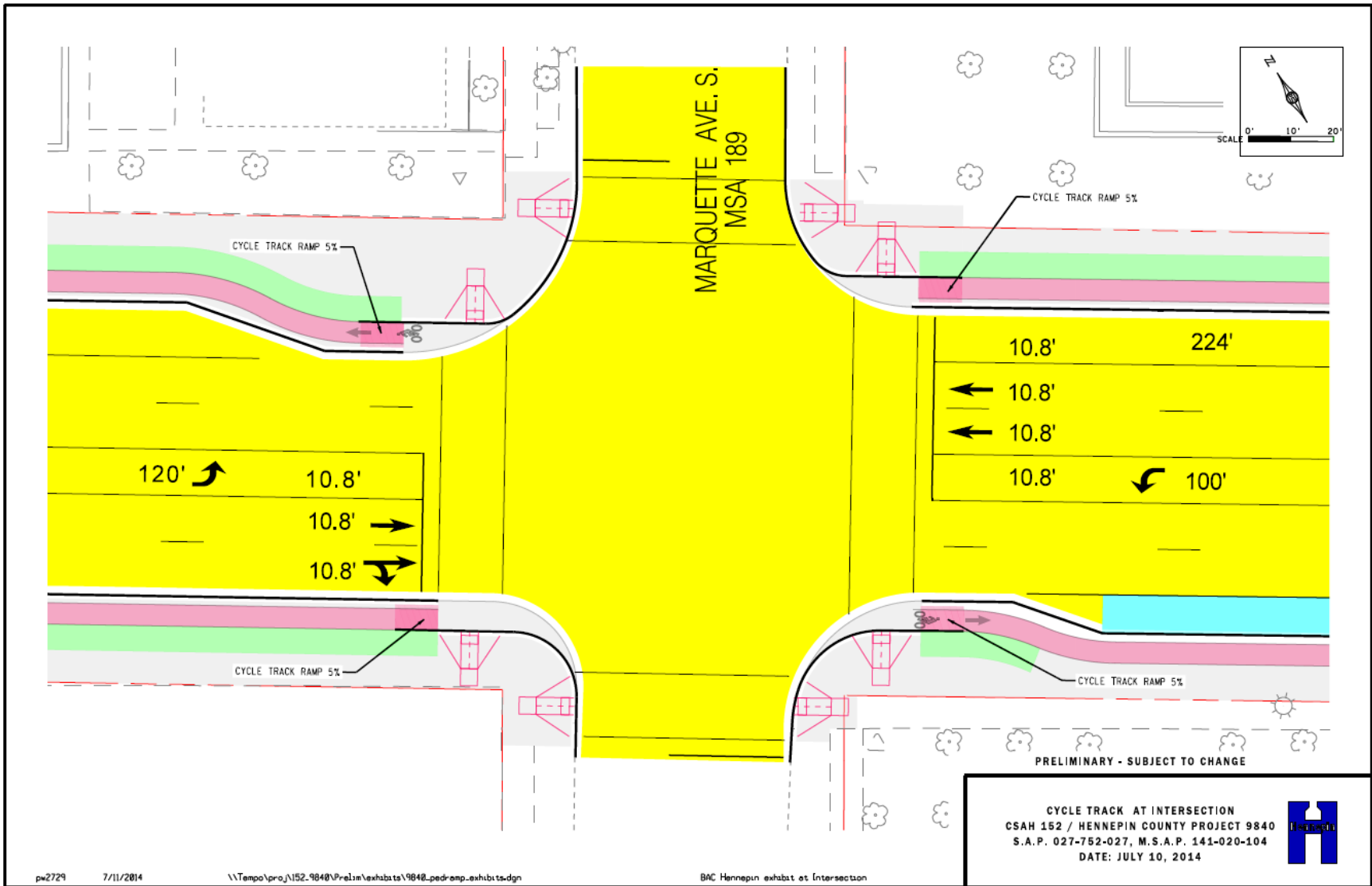
Me

Legend

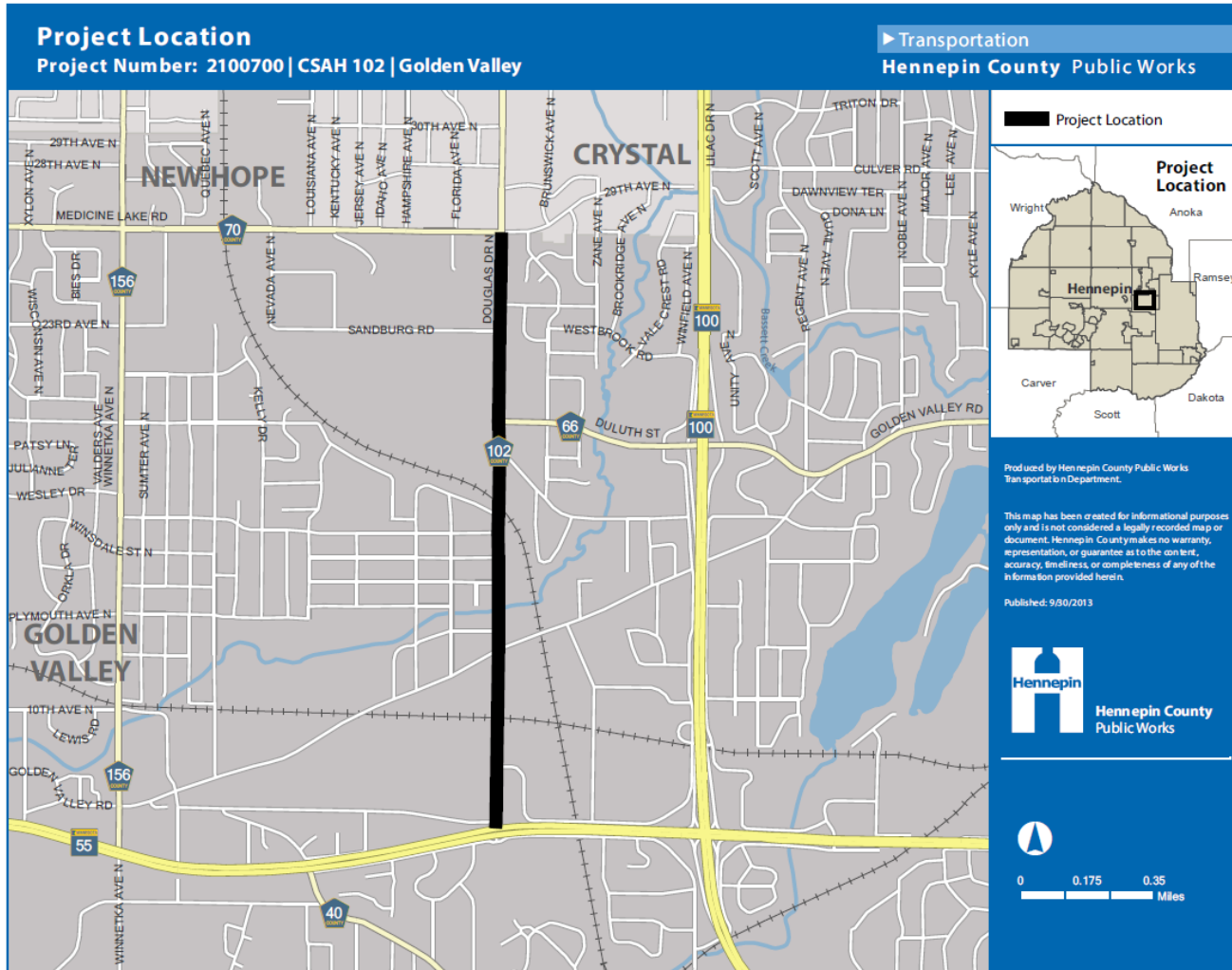
- Grant Funded FTE
- Non-County
- Vacant Position (1)
- Limited Duration Not in FTE - Unless noted
- Mobility
- Budget and FTE in One Department Reports to Other Department

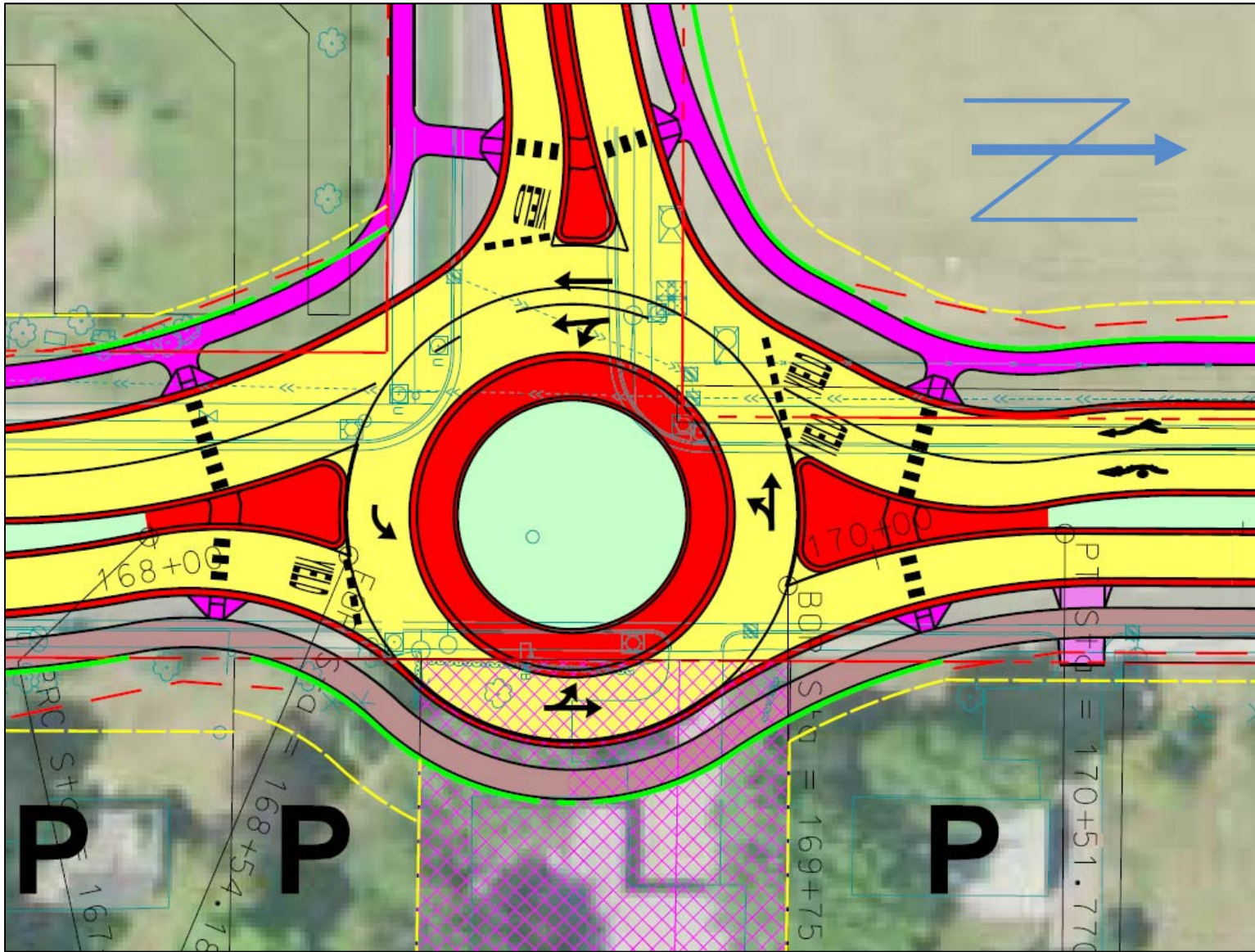
CURRENT PROJECTS (1 OF 5)



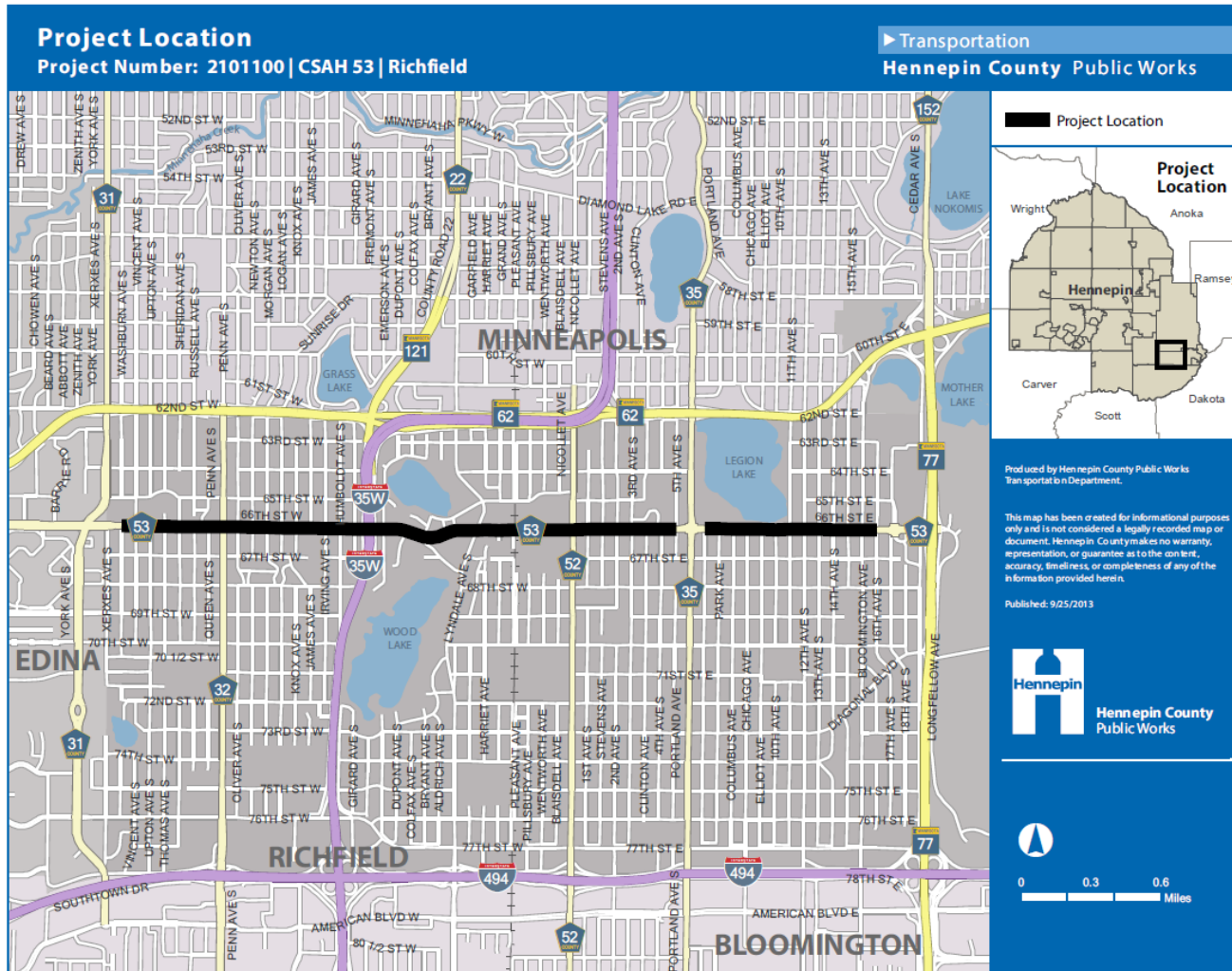


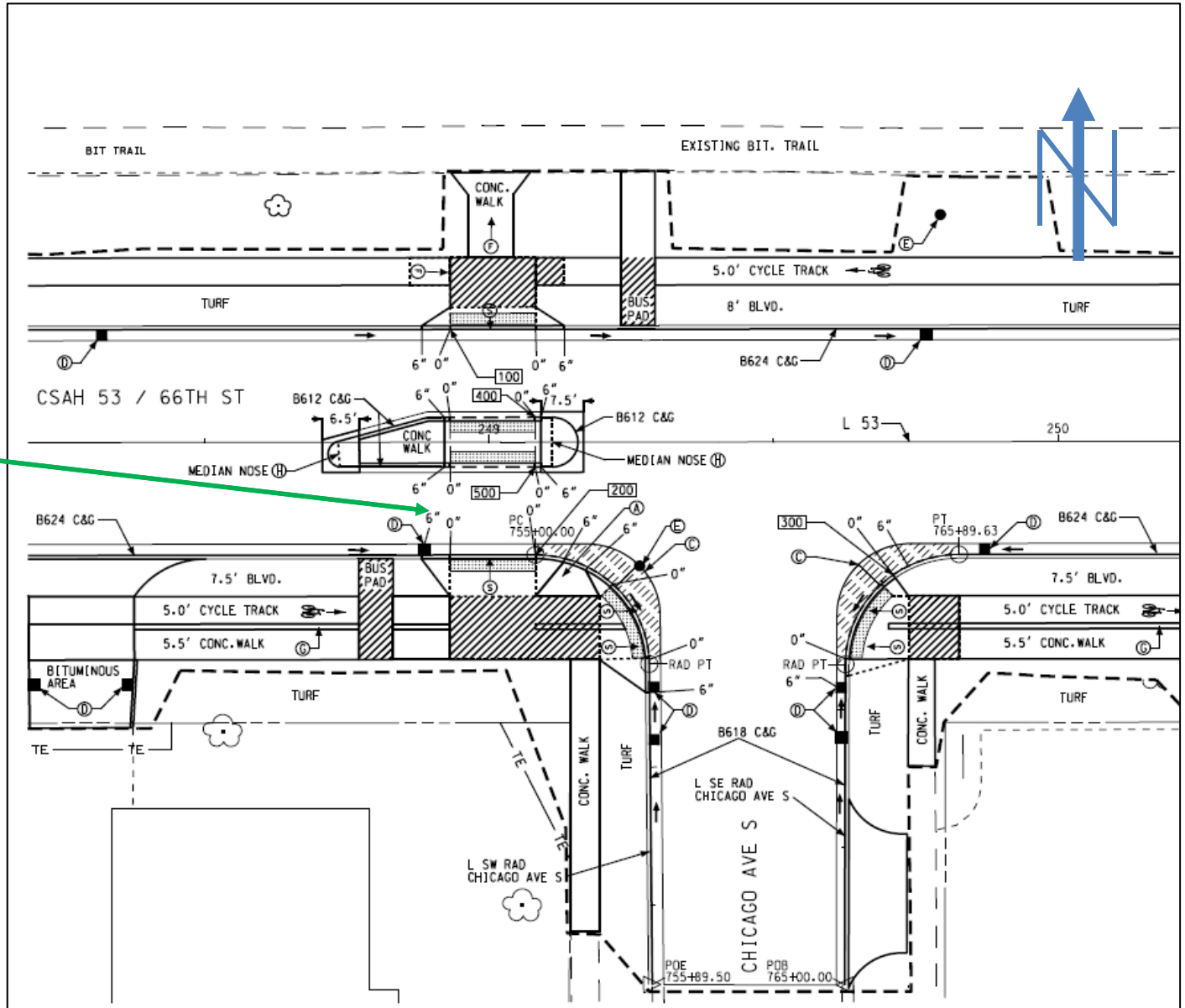
CURRENT PROJECTS (2 OF 5)



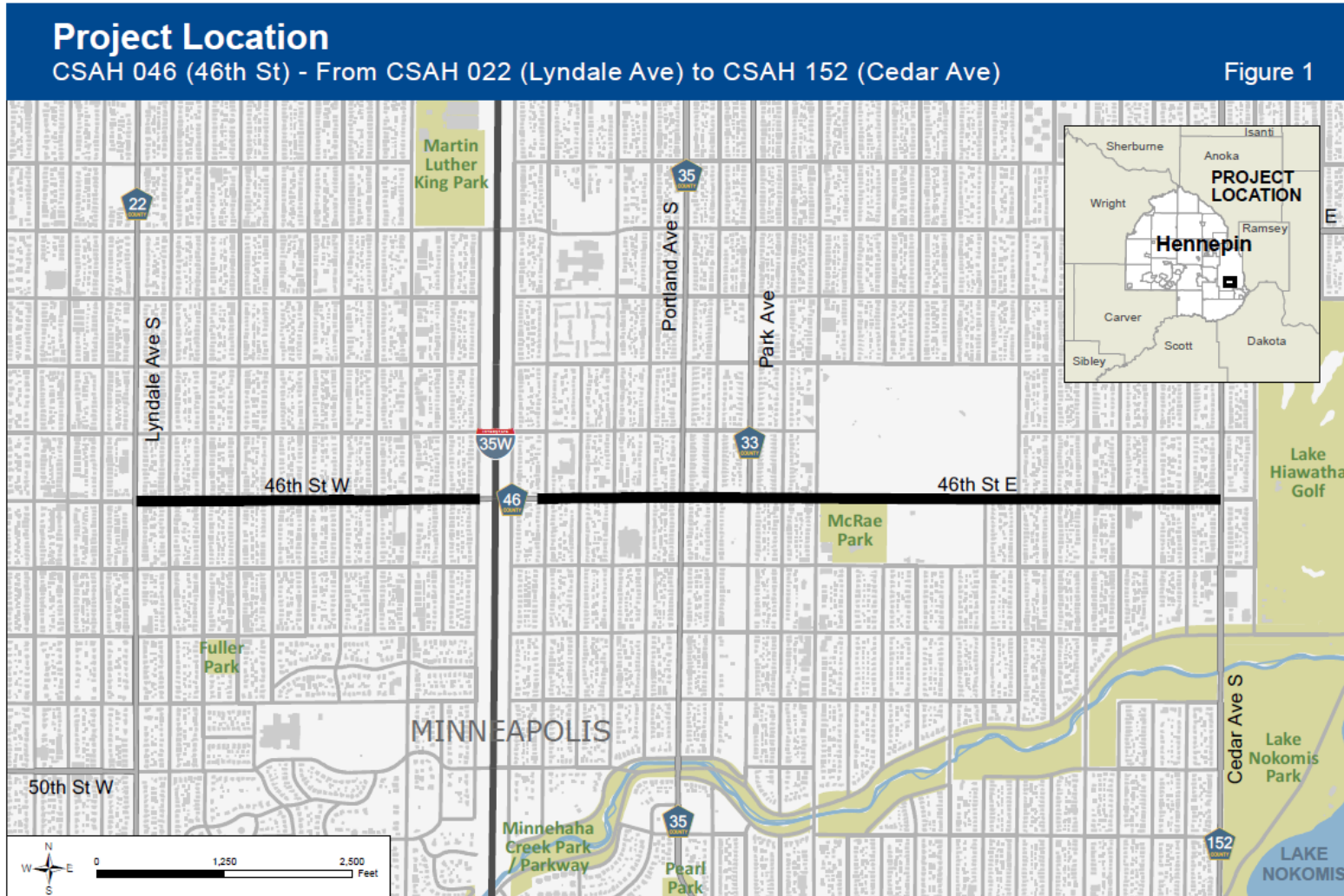


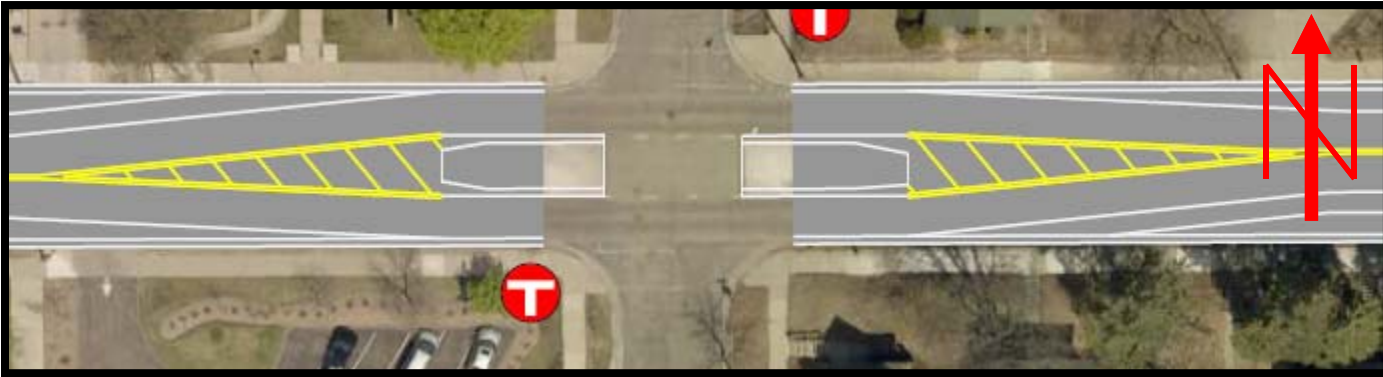
CURRENT PROJECTS (3 OF 5)





CURRENT PROJECTS (4 OF 5)





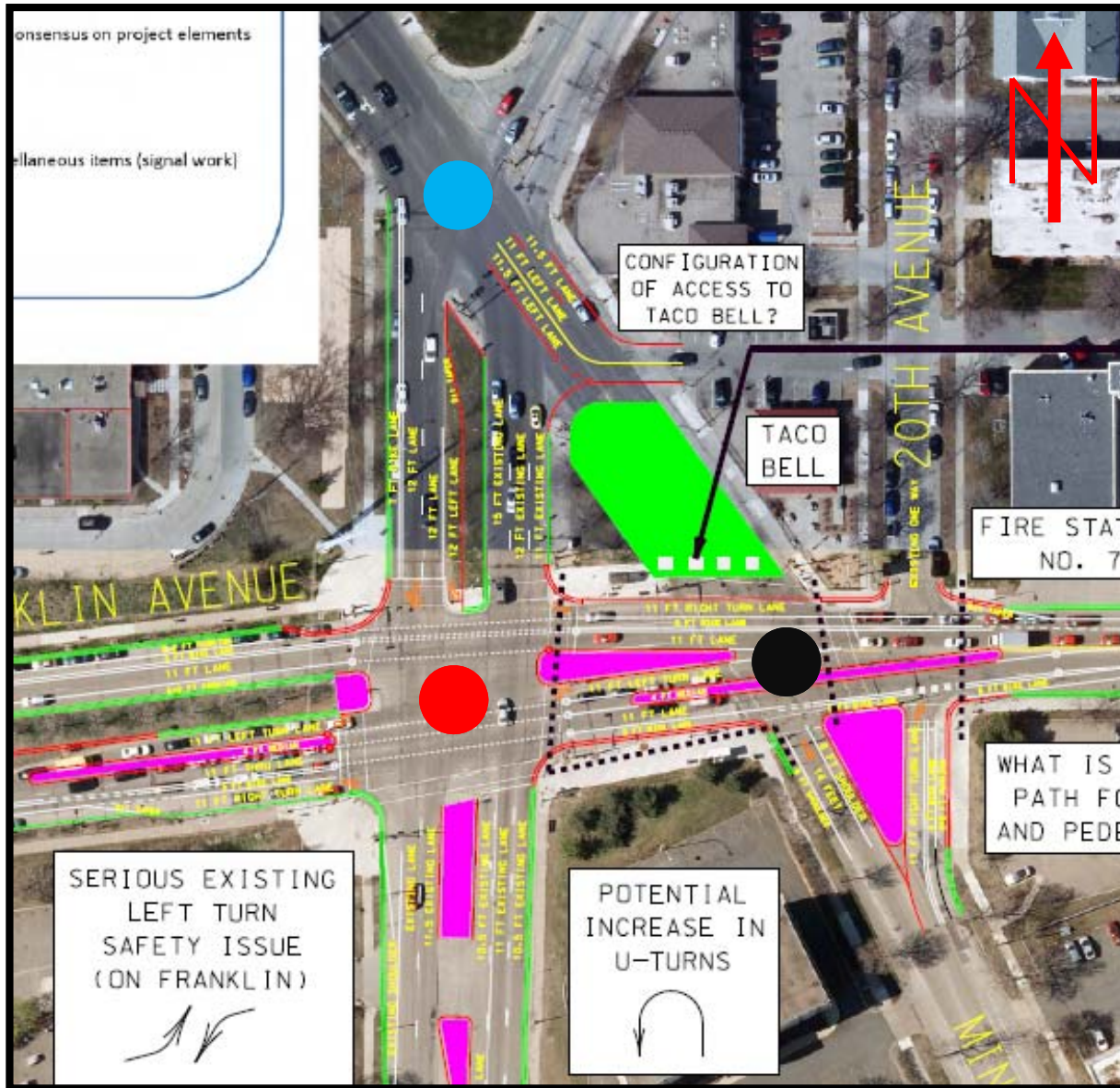
CURRENT PROJECTS (5 OF 5)

Project Location

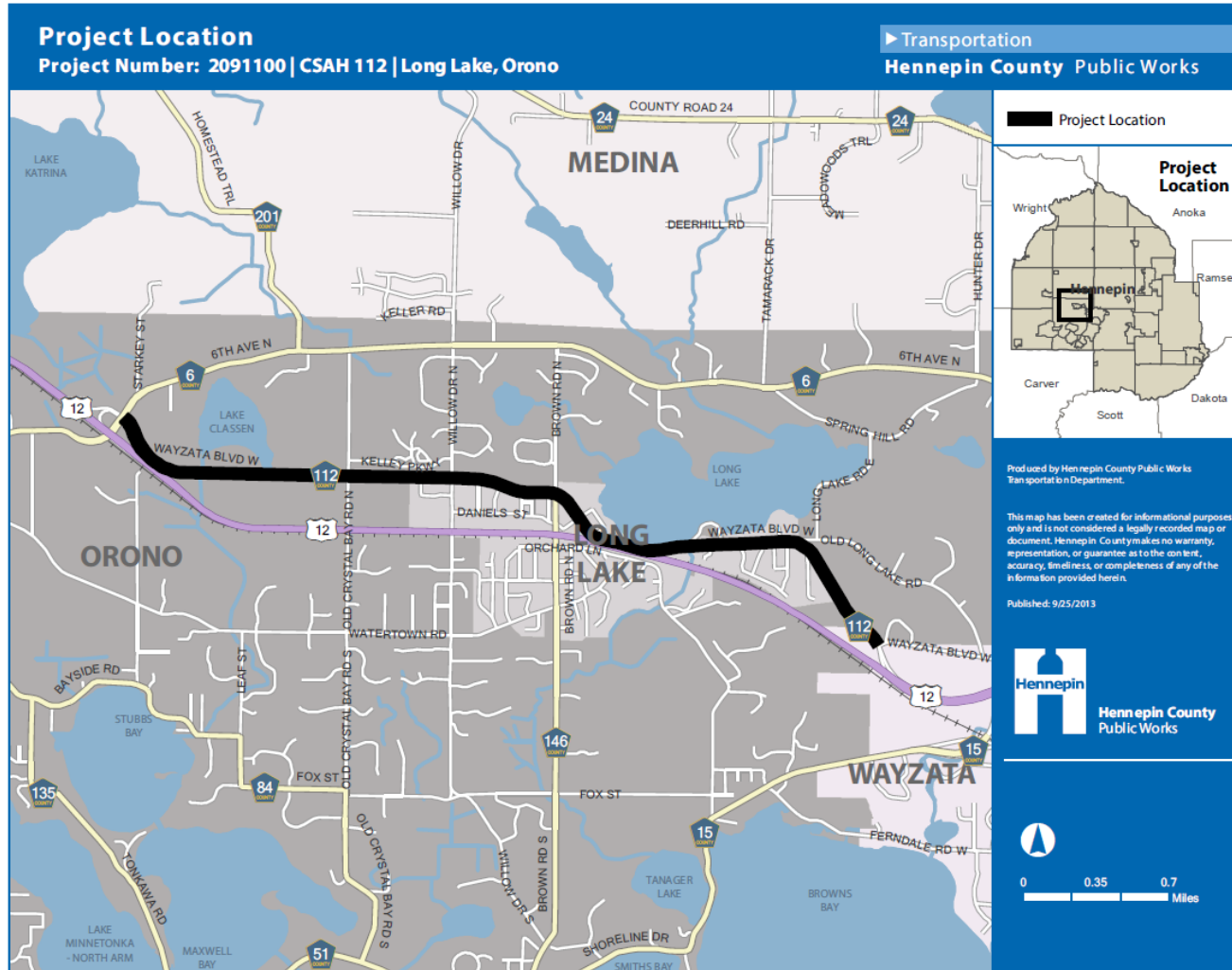
CSAH 005 (Franklin Ave) at CSAH 152 (Cedar Ave)

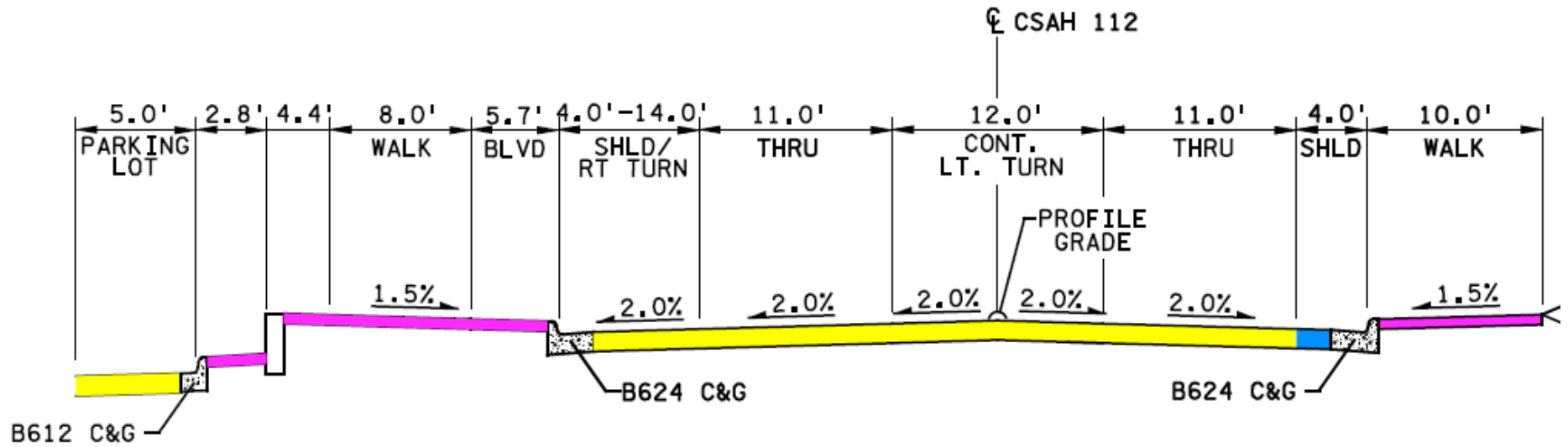
Figure 1



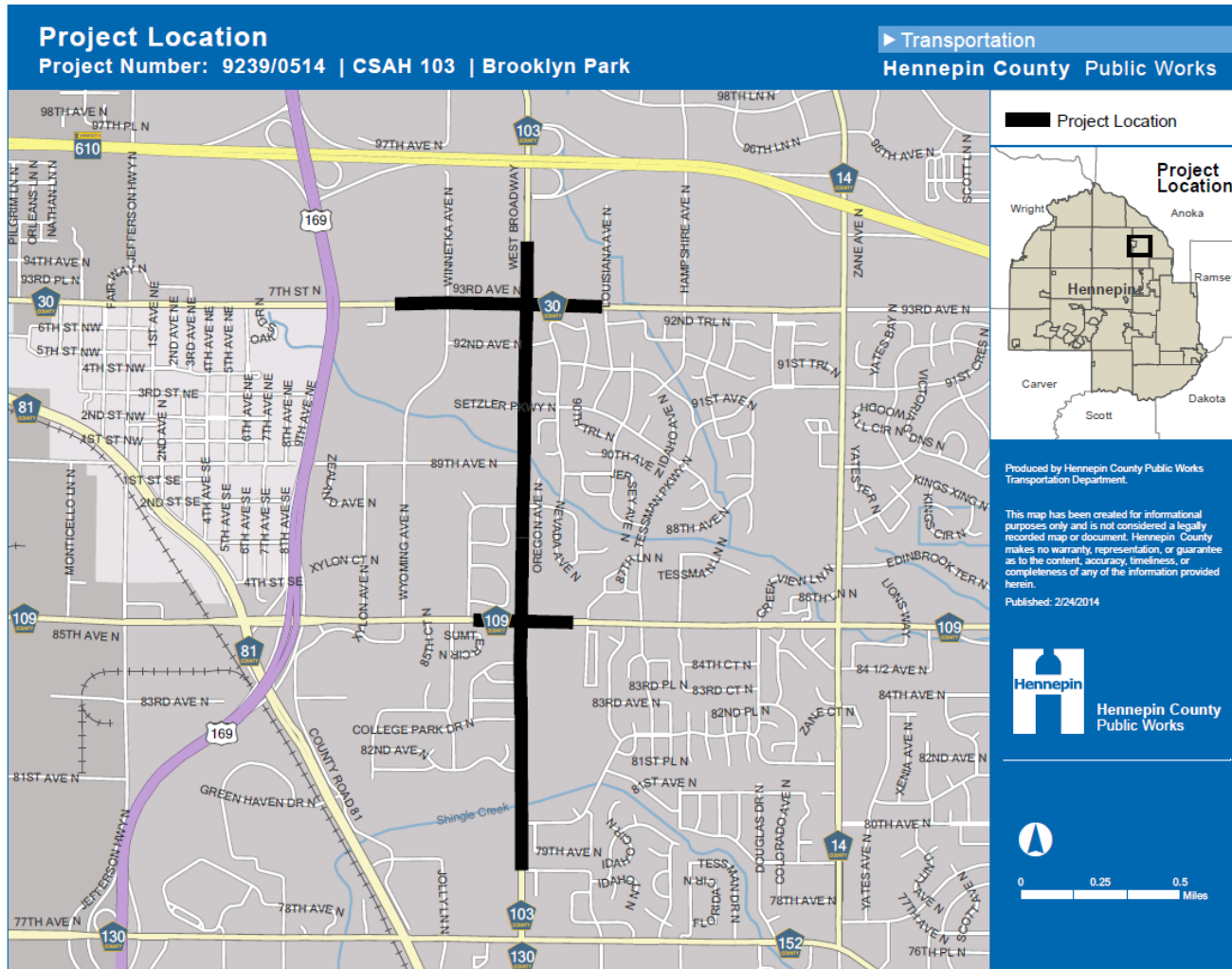


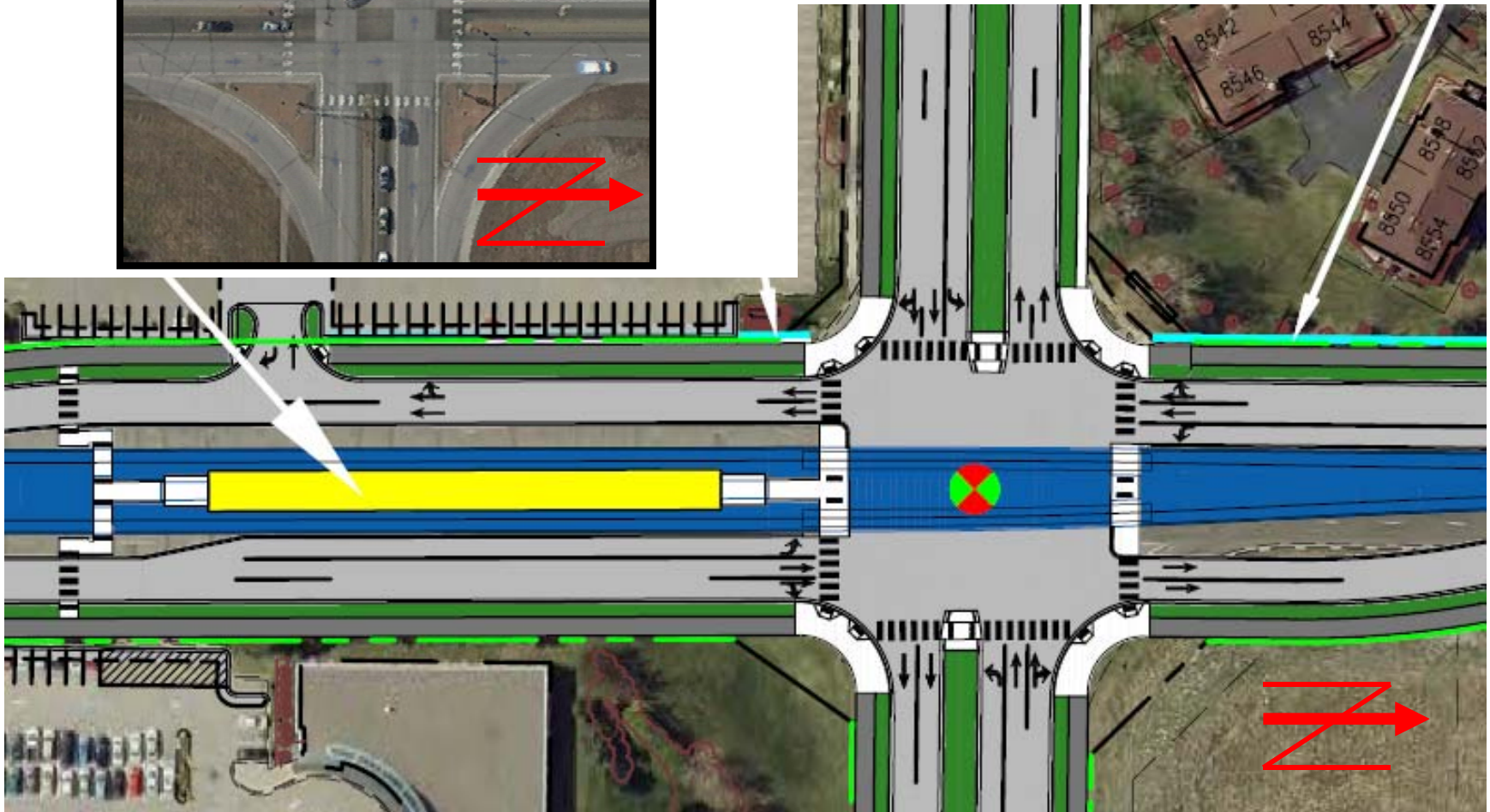
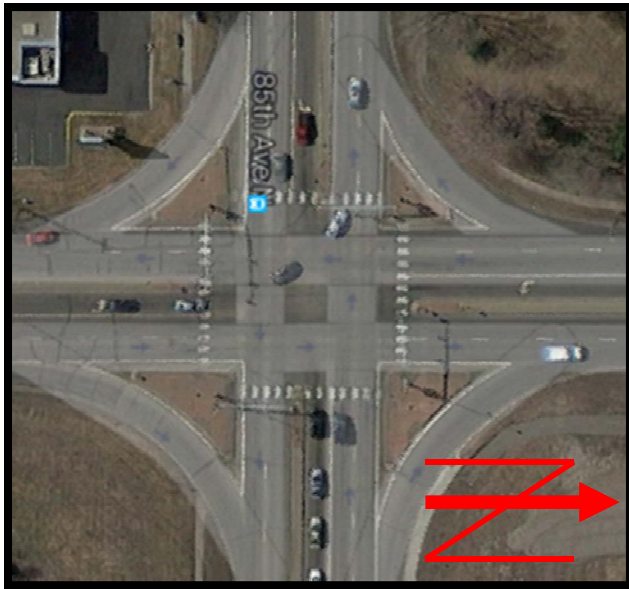
Upcoming Projects (1 of 3)



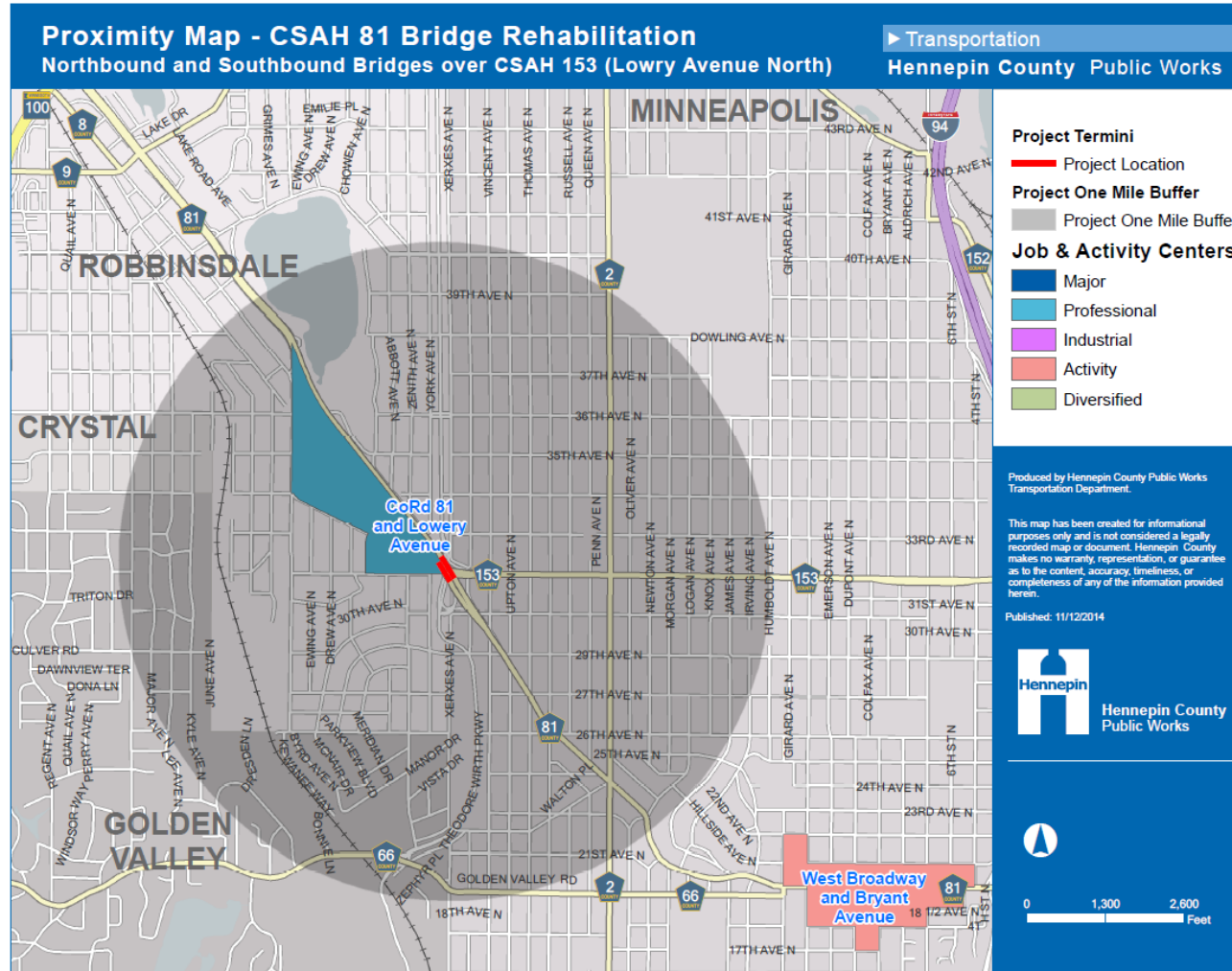


Upcoming Projects (2 of 3)





Upcoming Projects (3 of 3)





Future Challenges (1 of 10,000)



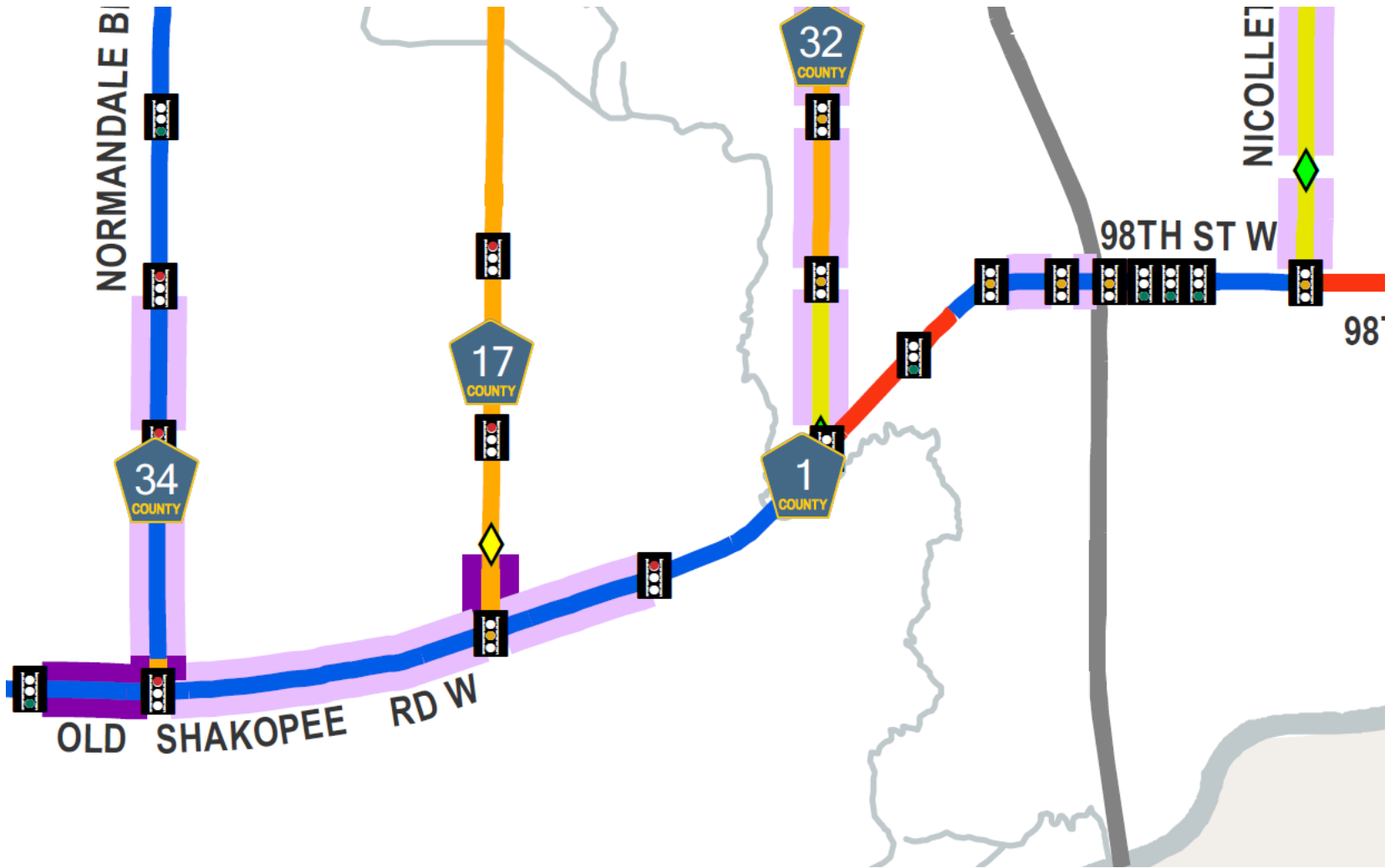
Future Challenges (2 of 10,000)



AMERICANS WITH DISABILITIES ACT (ADA)



DATA DRIVEN DECISIONS



MINNEAPOLIS NOW RESPONSIBLE FOR...



Questions?

Jason Pieper

(Transportation Engineer)

Jason.Pieper@hennepin.us

612-596-0241