

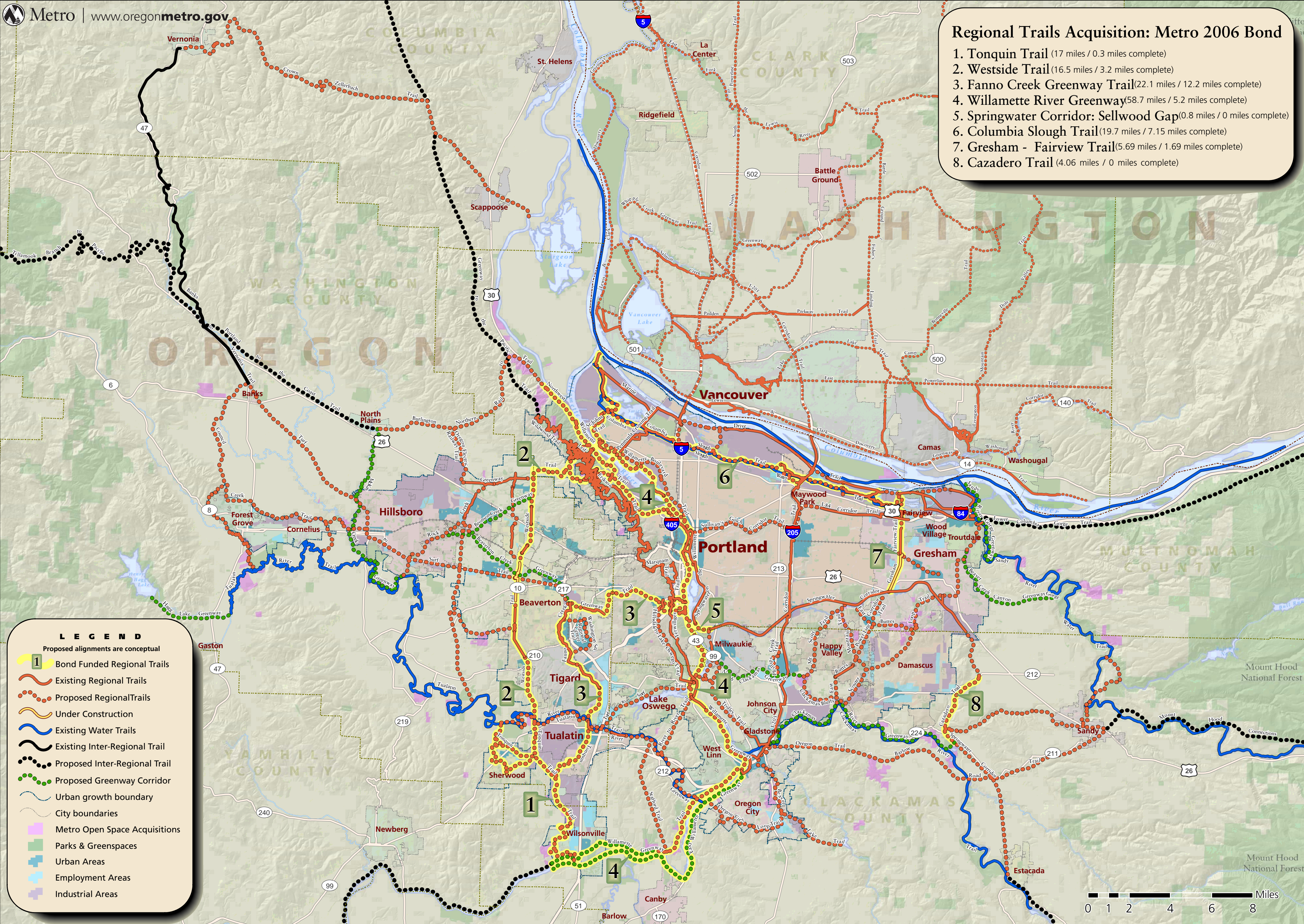
Metro Regional Trails and Greenways

As of October 2nd, 2008

Metro | www.oregonmetro.gov

Regional Trails Acquisition: Metro 2006 Bond

1. Tonquin Trail (17 miles / 0.3 miles complete)
2. Westside Trail (16.5 miles / 3.2 miles complete)
3. Fanno Creek Greenway Trail (22.1 miles / 12.2 miles complete)
4. Willamette River Greenway (58.7 miles / 5.2 miles complete)
5. Springwater Corridor: Sellwood Gap (0.8 miles / 0 miles complete)
6. Columbia Slough Trail (19.7 miles / 7.15 miles complete)
7. Gresham - Fairview Trail (5.69 miles / 1.69 miles complete)
8. Cazadero Trail (4.06 miles / 0 miles complete)



LEGEND

Proposed alignments are conceptual

- 1 Bond Funded Regional Trails
- Existing Regional Trails
- - - Proposed Regional Trails
- Under Construction
- Existing Water Trails
- - - Existing Inter-Regional Trail
- - - Proposed Inter-Regional Trail
- - - Proposed Greenway Corridor
- Urban growth boundary
- - - City boundaries
- Metro Open Space Acquisitions
- Parks & Greenspaces
- Urban Areas
- Employment Areas
- Industrial Areas

