

Business Perspective

September 2019



Kansas Governor Laura Kelly helped Dr. Melinda Estes, CEO, and her team celebrate a ribbon cutting for Saint Luke's Rehabilitation Institute. Located on the campus of **Saint Luke's South Hospital**, the state-of-the-art destination facility will be unique to the Kansas City region with leading-edge neuro-robotic equipment and the latest clinical trials for technologies and therapies. It will help patients and their families recover from a stroke, traumatic brain and spinal injuries, trauma, and other debilitating conditions. For more information: www.saintlukeskc.org/rehabinstitute.



Chamber members and their guests enjoyed the Chamber's annual golf tournament last month at **Nicklaus Golf Club at LionsGate**. For a recap and tournament winners, see page 8.

Presenting Sponsor:


Advent Health
South Overland Park



City of Overland Park and Chamber representatives helped Craig Anderson, Executive Vice President & COO; and Mark Parman, President-Kansas City; break ground at the site of **Equity Bank's** new banking center at College Boulevard and Metcalf Avenue. At approximately 28,000 square feet, the three-story banking center will include space for more than 100 employees as well as a dedicated branch office with drive-through and ATM services. Construction is expected to conclude in late 2020. For more information, [click here](#).

Our Mission:

To enhance the business environment and quality of life in our community.



Chamber Calendar

Wednesday Wake-up

Wednesday, September 11 - 8:00-9:00 a.m.

Saint Luke's South Hospital, 12300 Metcalf Avenue

Free and open to Chamber members only

2019 Series Sponsor: Fortune Financial Advisors

Public Policy & Advocacy Committee

Friday, September 13 - 12:00-1:30 p.m.

Overland Park Chamber, 9001 West 110th Street

\$15 per person for members only; lunch included.

Young Professionals Mix & Mingle

Wednesday, September 18 - 5:00-6:30 p.m.

Overland Park Convention Center, 6000 College Boulevard

Working Lunch

Friday, September 27 - 12:00-1:30 p.m.

Maggiano's Little Italy, 7025 West 135th Street

\$25 per person, Chamber members only

Presenting Sponsor: Spectrum Reach

Executive Leadership Series

Wednesday, October 2 - 7:30-9:00 a.m.

Featuring Wendy Doyle, Women's Foundation

DoubleTree by Hilton, 10100 College Boulevard

\$30 per person or \$330 for a table of 10 for members

\$40 per person or \$440 for a table of 10 for non-members

2019 Series Sponsor: First National Bank

To register for these events, [click here](#) or call (913) 491-3600.

Ribbon cuttings & groundbreakings

Wednesday, September 4 - 5:00 p.m.

B&B Theatres, 8601 West 135th Street

RSVP required to attend gala event - [click here](#)

Thursday, September 5 - 4:00 p.m.

Realty ONE Group Encompass, 6639 West 135th Street

Tuesday, September 17 - 4:00 p.m. - [click here](#)
WaterWalk, 11200 Glenwood Street

Thursday, September 19 - 4:00 p.m.
Promontory Apartments, 8961 Metcalf Avenue

Chamber Board and Staff

BOARD OFFICERS:

Mike Hess, **Chairman**
HNTB Corporation

Bobby Olm-Shipman, **Chair-Elect**
Saint Luke's South Hospital

Bill Ferguson, **1st Vice Chairman**
Central Bank of the Midwest

Steve Troester, **2nd Vice Chairman**
PGAV Architects, Inc.

Doug Lynn, **Secretary**
Sprint

Chris Wally, **Treasurer**
Wally & Co.

Brett Bogan, **Past Chairman**
Spencer Fane LLP

BOARD MEMBERS:

Faruk Capan, **Intouch Group**

Greg Crowley, **Crowley Furniture**

Tim Danker, **SelectQuote**

Jim Edwards, **Nothing Bundt Cakes**

John Fuller, **DLR Group**

Dr. Michael Fulton, **Shawnee Mission School District**

Jim Hemenway, **Chicago Title**

Tom Herzog, **Netsmart Technologies**

Brenner Holland, **Hunt Midwest**

Craig Jeffries, **Empower Retirement**

Jodde Lanning, **Payne & Jones, Chartered**

Karsten Randolph, **AdventHealth Shawnee Mission**

Cindy Rock, **Thryv**

Stacy Rose, **AdamsGabbert**

Tony Rupp, **Foulston Siefkin LLP**

Matt Sheets, **First National Bank**

Joan Wells, **Wellington**

Mark Williams, **Garver**

EX-OFFICIO BOARD MEMBERS:

Dr. David Cook, **The University of Kansas Edwards Campus**

Bill Ebel, **City of Overland Park**

Mayor Carl Gerlach, **City of Overland Park**

Dana Markel, **Visit Overland Park**

Tracey Osborne Oltjen, CCE, **Overland Park Chamber**

Greg Wolf, **Dentons**

Brett Bogan, **Spencer Fane LLP**
[2019 Chairman of Overland Park Chamber Economic Development Council]

CHAMBER STAFF:

Tracey Osborne Oltjen, CCE, **President & CEO**

Stacey Cowan, **Membership Director**

Andie Drummond, **Member Services Coordinator**

Frank Ebling, **CFO**

Celia Fritz-Watson, IOM, **Director of Events & Member Services**

Tim Holverson, IOM, **Recruitment & Retention Director, Economic Development**

Chris Jackson, **EDC Policy & Communications Coordinator**

Beth Johnson, CECD, **Senior Vice President of Economic Development**

Stan Lawson, **Communications Director**

Erin Murray, **Assistant to the President**

Amanda Schumacher, **Special Projects**

Kevin Walker, IOM, **Vice President of Public Policy & Advocacy**

Border Schmorder

Last month Governor Laura Kelly signed Executive Order 19-09 directing the Kansas Department of Commerce to no longer provide incentives to any company in the Kansas City region for simply moving employees from one side of the state line to the other.

For many years the topic of the "Border War" has cost significant time, energy and tax dollars. It's been debated everywhere from coffee shops and company board rooms to state capitol hearing rooms and the national media. Companies every day move their offices to accommodate a growing workforce or to modernize their facilities, sometimes changing cities or states. The majority do this with no incentives at all.

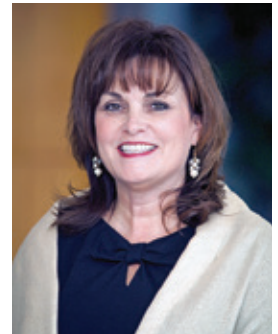
But the fact that the incentive structure of both Missouri and Kansas emphasizes new job growth has provided incentives for companies to move across the border without requiring them to create net new jobs. This has been a bone of contention for many lawmakers and the taxpayers they represent. Theoretically, Gov. Kelly's action, which followed Missouri's passage of its own legislation, will end this practice. Moving forward, companies crossing the border will only receive incentives if they create a net of new jobs.

Of course, it was never as simple as the stroke of two governors' pens. While the incentives at the state level were similar, the differences have been at the local level. We have long noted that simply setting aside MO WORKS and KS PEAK for companies moving state to state wouldn't have addressed the disparity in local tax abatements. The Kansas Constitution limits cities and counties to up to a maximum 10-year property tax abatement, while Missouri cities and counties can grant up to 25. Kansas City's Port Authority can grant up to a 35-year abatement.

After feedback from local municipalities, chambers, economic developers, and business leaders Gov. Kelly asked local governments to comply with the bi-state agreement and reserved the right for Kansas to rescind the agreement if Missouri communities choose to not level the playing field. Kansas City Mayor Quinton Lucas pledged support, noting discussions with other Missouri municipalities are in progress to limit tax abatements to the Kansas 10 years.

This doesn't mean competition for jobs is over. Just prior to this détente, Governor Kelly and Missouri's Governor Mike Parson and their teams collaborated to win the USDA relocation for the Kansas City region, irrespective of state lines or community borders. As with most projects, companies and their employees don't see boundaries. They see the kind of place they want to live and raise their family, the kind of place that is attractive to employees with quality schools, recreation and cultural opportunities. They see safe and efficient transportation access to work, home and play. They see access to excellent health care.

To ensure that prospects see these opportunities here, we work together, and not just to market the region. It's more fundamental than that. We must work together to enhance the quality we provide in each of our communities. Trans-



Tracey Osborne Oltjen, CCE, IOM
President & CEO
@traceylosborne

(continued on page 4)

Business Perspective is published monthly by the Overland Park Chamber of Commerce.
9001 West 110th Street, Suite 150, Overland Park, KS 66210
Phone: (913) 491-3600 • Fax: (913) 491-0393 • opcc@opchamber.org • www.opchamber.org

Build your business network!

**Wednesday
Wake-up**

A Business Before Hours

Wednesday, September 11

8:00-9:00 a.m.

Enjoy networking over coffee and breakfast foods and learn more about what's new at **Saint Luke's South Hospital** including the newly opened Saint Luke's Rehabilitation Institute with its state-of-the-art rehabilitation treatment and technology that is on par with the nation's best facilities.

Free and open to Chamber members only.

To register, [click here](#) or call (913) 491-3600



Hosted by
12300 Metcalf Avenue



2019 Series Sponsor:



**Overland Park
YOUNG PROFESSIONALS**

Mix & Mingle

Join other young professionals in the outdoor courtyard at the **Overland Park Convention Center** for yard games, great music, hand-crafted cocktails and delectable new menu creations.

**Wednesday,
September 18**

5:00-6:30 p.m.



Hosted by

To register, [click here](#) or call (913) 491-3600



Sponsored by



Friday, September 27

12:00-1:30 p.m.

Hosted by



7025 West 135th Street

\$25 per person for Chamber members only.

To register, [click here](#) or call (913) 491-3600

**Executive
Leadership
Series**

INSIGHTS FROM THE TOP
Overland Park Chamber of Commerce

Join us for these programs featuring executive insight on business leadership.

Proudly sponsored by:



Wednesday, October 2

7:30-9:00 a.m.

DoubleTree by Hilton Kansas City-Overland Park
10100 College Boulevard

featuring

**Wendy Doyle, President & CEO
Women's Foundation**

As President & CEO of the Women's Foundation, Wendy Doyle promotes equity and opportunity for women and their families, using philanthropy, research and policy solutions to make meaningful change. Wendy's nonprofit career includes working for the National Kidney Foundation, Inc. and Catholic Charities of Northeast Kansas, and serving on numerous local nonprofit boards.



Members: \$30 per person or \$330 for a reserved table of 10
Non-members: \$40 per person or \$440 for a reserved table of 10

To register, [click here](#) or call (913) 491-3600

An evening of food, drinks & conversation!



Sponsored by



**Tuesday,
October 15**

4:30-6:30 p.m.

Hosted by



9000 West 137th Street

Join us for a fun evening of food, drinks and mingling with your business colleagues. You'll be among the first to experience **Fiorella's**, the newest chapter in the fourth-generation family restaurant business. Fiorella's modern, elegant space can flex to host everything from small parties of 20 to big bashes up to 1,500 people.



Free and open to Chamber members only.

To register, [click here](#) or call (913) 491-3600

CHAMBER ANNOUNCEMENTS

Diplomat Q&A

Sandi Harkins, Agenda: USA

My company is **Agenda: USA** (AUSA). I lead a team of talented individuals that help grow AUSA daily making us the best in the industry.



Q: Who is a best connection / partner for you in business?

A: I look for travel and meeting managers.

Q: Why are you a Chamber Diplomat?

A: The networking opportunities are endless and the people truly become the family.

Q: What has been your favorite benefit or moment as a member of the OP Chamber?

A: All of the networking! It truly is a great membership where you can get very involved meeting so many new contacts.

Q: What is the best advice you've ever received?

A: Never ever stop learning!

Q: What is your hidden talent or ability?

A: I play trumpet and actively play in two ensembles.

Q: Who is somebody you look up to as a role model and why?

A: My grandmother. She is almost 95 and still continues to grow her mind. She does anything possible to learn and continues to share that information.

Q: What has been your favorite journey?

A: LOP 2019 class. I learned so much about our city, county, region, and state.

Q: What is your motto?

A: Ask for forgiveness, not permission!

Q: What are you most passionate about in life?

A: My husband and my family! Then come the music.

Q: What do you consider your greatest achievement, so far?

A: Marrying a man who had full custody of four kids and surviving!

To find out about becoming a Chamber Diplomat, contact Stacey Cowan at (913) 766-7604 or scowan@opchamber.org.

President's Message continued . . .

portation, education, culture, sports, health care . . . none of these are defined by boundaries just as few of your businesses are. The overall health of each of our communities enhances the region's vitality and creates opportunity.

We applaud Governor Kelly and Governor Parson and their teams for their collaboration on this agreement. We're excited about the focus on net new jobs and the opportunity to continue our vigorous competition, within the spirit of this agreement, as we work together to bring new jobs and capital investment to our region.

SAVE THE DATES!

GOOD MORNING
GMOP
OVERLAND PARK!

Friday, October 25

7:30-9:00 a.m.

DoubleTree by Hilton Kansas City-
Overland Park

10100 College Boulevard

Proudly sponsored by

Humana

Annual Meeting
Thursday, December 5

11:30 a.m.-1:30 p.m.

Marriott Kansas City Overland Park
10800 Metcalf Avenue



Keynote Speaker:
Rebecca Ryan
Human Spark Plug,
Futurist & Economist

Event Sponsor:

SECURITY BANK
OF KANSAS CITYSM

Sponsorships Available!

Contact Celia at (913) 766-7603 or cfrizwatson@opchamber.org

Wednesday
wake-up

A Business Before Hours

hosted on August 14 by



MENORAH
MEDICAL CENTER



David Freisner, **Fortune Financial Advisors**; Frank Flores, **Lifestyle Publications**; Erin Ronan, **Enterprise Bank & Trust**; Becky Jones, **H-Wave**.

Click advertisement below for details



Deck THE Tables

CATER IN THE Q AND
TREAT EVERYONE TO
MASTERFULLY MADE BBQ.

CHAMPION BBQ PACKAGE:
STARTING AT \$12.95 PER PERSON

GRILL OUT PACKAGE:
STARTING AT \$17.95 PER PERSON

PIT MASTER'S FAVORITES:
STARTING AT \$14.95 PER PERSON

VISIT Q39KC.COM/CATERING TO LEARN MORE



CONTACT THE CATERING TEAM TODAY:

MIDTOWN: 816.255.3753 EXT 3 | SOUTH: 913.951.4505 EXT 3
Q39KC.COM | FOLLOW US ON SOCIAL @Q39KC



NEW MEMBERS / RECENT EVENTS

Welcome new members!

We are pleased to introduce these new Chamber members:

Align By Design

Overland Park, KS 66212
(816) 377-6765
kneal@alignbydesign.events
www.alignbydesign.events
Event Services

AlphaGraphics of South Kansas City

Leslie Hess, Owner
14965 West 117th Street
Olathe, KS 66062
(913) 236-8888
lhess@alphagraphics.com
www.alphagraphics-sk.com
Printing, Signs

B&B Theatres Overland Park 16

Paul Weiss, Director of Loyalty & Promo Analytics
8601 West 135th Street
Overland Park, KS 66223
(913) 871-5352
www.bbtheatres.com/location/overland-park-16
Movie Theatres, Event Space

City Publications-KC

Sue Buckley, President
Lenexa, KS 66219
(785) 250-0115
sue@citypubkc.com
www.citypubkc.com
Marketing Services, Business Consultants

Custom Limousine Inc.

Tom Edmondson, Owner
11531 Kaw Drive
Bonner Springs, KS 66012
(913) 441-2674
info@kctransportation.com
www.kctransportation.com
Limousine Services, Transportation Providers

Hattie's Cookie Jar

David Early, Owner/Baker
(913) 220-4143
davidrobertearly@gmail.com
Bakery, Caterers
Referred by Lindsey Weathers, Elite Physicals

My WiFi Guy LLC

Blake Anderson, Owner
P.O. Box 901693
Kansas City, MO 64190
(877) 943-4489
blake.anderson@mywifiguy.net
www.mywifiguy.net
Internet Marketing & Advertising, Computer Networking
Referred by Larry Schneider, Miracles With Water

The Organizer Chicks

Clare Warrington, Director of Operations, Kansas City
(913) 535-8150
info@theorganizerchicks.com
www.theOrganizerChicks.com
Organizing Services & Systems, Household & Business, Speakers, Lectures & Seminars

PREVAIL

Adam Doran, Advisor
4745 West 136th Street
Leawood, KS 66224
(913) 295-9500
www.prevailiws.com
Financial Planning Consultants & Services, Financial Services

Promontory Apartments

Jill Overin, Property Manager
8961 Metcalf Avenue
Overland Park, KS 66212
(913) 871-4422
manager.promontory@launchliving.com
www.promontoryapts.com
Apartments

Click advertisement below for details



Member Renewals

We thank these companies for reinvesting in the Overland Park Chamber in July 2019:

40-49 Years

Valbridge Property Advisors | KC

20-39 Years

Ascension Living St. Joseph Place
Baker University
Blue Valley School District
BNSF Railway Company
Buchanan Clarke Schlader LLP
Fiorella's Jack Stack Barbecue
GBA
HDR Engineering, Inc.
Hechler Orthodontics
Kathleen's Flowers
Logan Logan & Watson, L.C.
Martin, Pringle, Oliver, Wallace & Bauer, LLP
Parris Communications Inc.
Rosati's Pizza
Safehome, Inc.
Straub Construction Company, Inc.
VanTrust Real Estate, LLC

10-19 Years

Cleveland University-Kansas City
Community Blood Center
The Forum at Overland Park
Holmes Murphy & Associates
Hovey Williams LLP
McCownGordon Construction
Parker Communications Group
Sam's Club of Overland Park
Tekniq Data Corporation

5-9 Years

Block Real Estate Services, LLC
Canon Solutions America
DEG
Gaslight Grill
Kansas City Web Design
Primrose School of Overland Park
REACH Healthcare Foundation
The University of Kansas Hospital
WaterFront Wealth

1-4 Years

APEX Career Services
Arbor Development, LLC
Baron Contracting Corporation
Brookridge Dentistry & Orthodontics
Budget Blinds of Overland Park
Edison Spaces-4400 College
Edison Spaces-7900 College
Forerunner Signs & Graphics
Fully Promoted Overland Park
Great Southern Bank
Heartland Soccer Association
MTI EVENTS
Phoenix Natural Wellness
Q39
Quilters HQ
Reece Nichols - The Rob Ellerman Team
SERC Physical Therapy-Overland Park
TITLE Boxing Club | 19th
Xcel Roofing



Cheers

TO

FUN & EASY

Throw a holiday party stuffed with hours of game play, a flexible menu and plenty of event space.



topgolf.com/events

2019 Golf Tournament

Presenting Sponsor:



Eagle Sponsor:



Beverage Carts:



Lunch

Awards Reception:



Golf Ball Flight Prizes:



Soft Drinks:



95th & Antioch

Signage Sponsor:



Overland Park

Hole Sponsors:

- Academy Bank
- Atmos Energy Corporation
- Baron Contracting Corporation
- Cosentino's Market-Blue Valley
- Equity Bank
- Firestone Complete Auto Care
- Fortune Financial Advisors, LLC
- INTRUST Bank
- Landmark National Bank
- McCownGordon Construction
- Mid American Credit Union
- OMNI Human Resource Management
- Overland Park Convention Center
- PGAV Architects, Inc.
- Polestar Plumbing, Heating and Air Conditioning
- Renewal by Anderson
- Scott Rice Office Works
- Turner Construction

Flight & Contest Prize Partners:

- INTRUST Bank
- Firestone Complete Auto Care – 135th Street
- Scheels

Tournament Volunteers

- Chamber Diplomats (pre-tournament)
- Joy Broils, **SLCKET**
- Joe Lillian, **Servpro of Leawood/Overland Park**
- Teresa & Kirk Reh, **IDLife**
- Erin Ronan, **Enterprise Bank & Trust**
- Cindy & Joe Shelton, **Nifty Promotions**
- Connor Stangler
- Mike Tracy, **OMNI Human Resource Management**

Tournament Winners:

Longest Putt: Garrett White, **White Lawn and Landscape LLC**

Closest to the Pin: Cliff Speegle, City of Prairie Village

Longest Drive (Men): Grant Burnside, Assured Partners

Longest Drive (Women): Lexa Palomarez, Turner



Flight A, 1st Place – Dallas Purkeypyle, Cooper McInnes, Jeff Prusia, Ronnie Chanvitayapongs (not pictured), all with **Advent-Health**



Flight B, 1st Place – Brad Peterson, Heartland Seating; Barry Sullivan and Cris Smith, **Central Bank of the Midwest**; Steve Hahn, **CARSTAR Metcalf**



Flight A, 2nd Place – Alex Goodpaster, **Equity Bank**; Grant Burnside, Assured Partners; Trey O'Neil, GameReady Rehabilitation; Ryan Bealmear, Teague Electric Construction



Flight B, 2nd Place – Matt Fowler, Carl Petz, Andrew Petz, Scott Stallard, all with **Black & Veatch**



Flight A, 3rd Place – Paul Garverick, Resley Hinton, Drew Lethem, Todd Manes, all with **SelectQuote**



Flight B, 3rd Place – Nick Gambill, Chris Pernice, Brett Rapplean, Curtis Vestal, all with **Firestone Complete Auto Care**

Door Prize and Swag Bag Contributors:

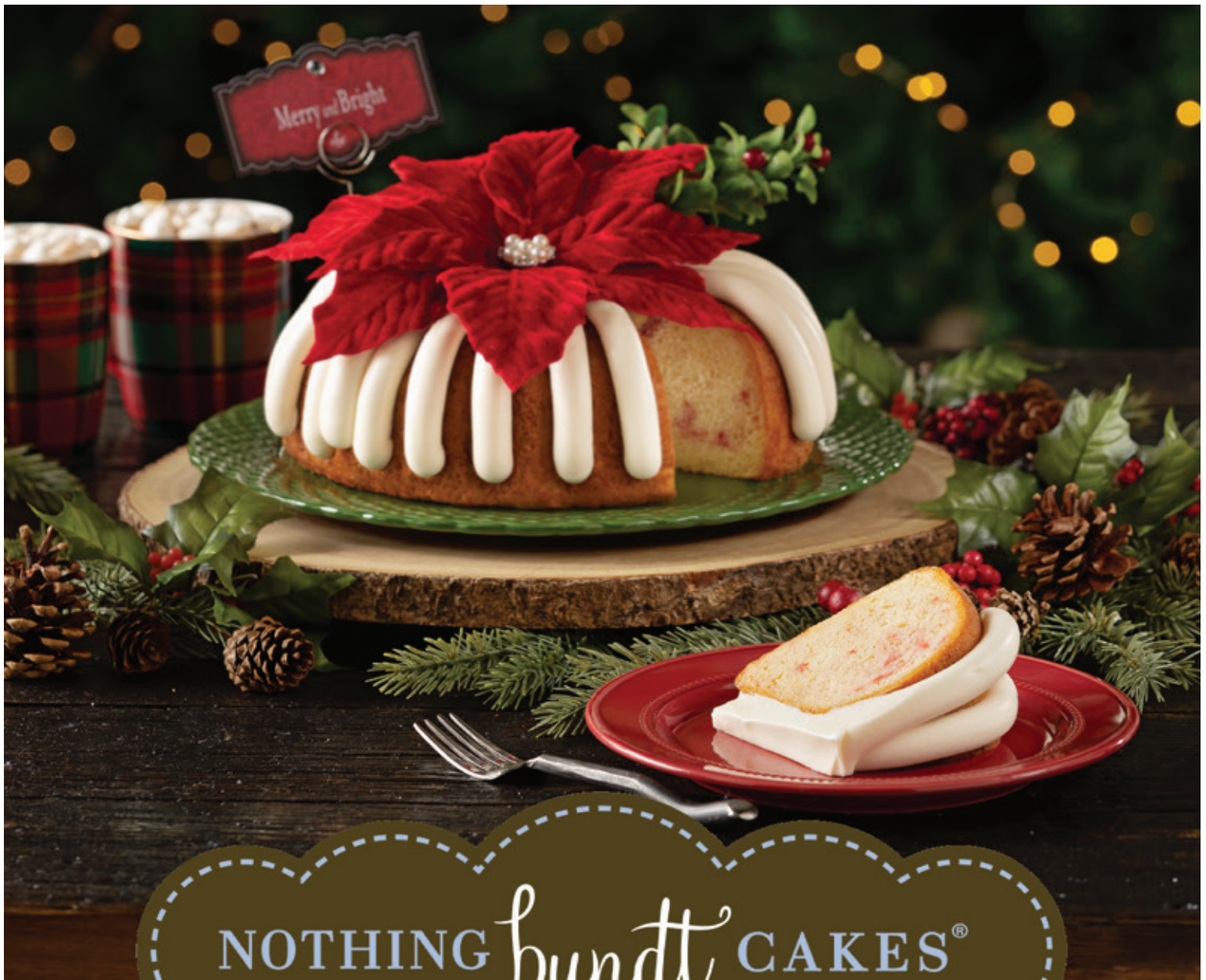
Agenda: USA

Andy's Frozen Custard
 Axcet HR Solutions
 Bambou Salon & Spa
 Bank of Blue Valley
 Beauty Brands
 Black & Veatch
 Blue Valley Goodyear
 Brew Haha Coffeehouse
 Camp Quality Missouri
 Chick-fil-A 135th & 69 Hwy
 CommunityAmerica Credit Union
 Deanna Rose Farmstead
 DoubleTree by Hilton Kansas City-Overland Park
 Elite Martial Arts
 Elite Physicals
 Fiorella's Jack Stack Barbecue
 Firebirds Wood Fired Grill

First National Bank
 Grandma's Office Catering
 Health Resources by Humana
 Hereford House - Leawood
 INTRUST Bank
 Jason's Deli
 Kansas City Chiefs Football Club & Arrowhead Events
 KC Wine & Spirits
 Komotodo Sushi Burrito
 LaMar's Donuts & Coffee
 Lenny's Grill & Subs
 Lowe's Home Improvement
 Mid American Credit Union
 Nekter Juice Bar
 New Horizons Computer Learning Centers
 Nicklaus Golf Club at LionsGate
 Nifty Promotions

Oak Park Mall
 Office Evolution
 Panera Bread
 Q39
 Saint Paul School of Theology
 Scheels
 School of Rock Overland Park
 Sears Home & Life
 SelectQuote
 Servpro of Leawood/Overland Park
 Shepherd Elder Law Group, LLC
 The Arts and Recreation Foundation of Overland Park
 The Tasteful Olive Oil and Vinegar Shop
 WaterWalk
 Which Wich? Superior Sandwiches
 Zarda Bar-B-Q & Catering Co.

Click advertisement below for details



NOTHING *bundt* CAKES[®]

OVERLAND PARK
(913) 239-0252
THE SHOPPES AT DEER CREEK
13420 METCALF AVE
OVERLAND PARK, KS 66213

MISSION
(913) 384-2707
6850 JOHNSON DRIVE
MISSION, KS 66202

LEE'S SUMMIT
(816) 525-9000
910 NW BLUE PARKWAY (SUITE Y)
LEE'S SUMMIT, MO 64086

TIFFANY SPRINGS - NORTH KC MO
(816) 382-3800
8930 NW SKYVIEW AVENUE
KANSAS CITY, MO 64154

Partner Spotlight:



Sprint is a communications services company that creates more and better ways to connect its customers to the things they care about most. Today, Sprint's legacy of innovation and service continues with an increased investment to dramatically improve coverage, reliability, and speed across its nationwide network and commitment to launching a 5G mobile network in the U.S.

As a certified Great Place to Work, Sprint has approximately 6,000 employees living here, working here and supporting local businesses. Sprint has a long history of commitment to Kansas City and continues to care deeply about our headquarters community. In 2018, Sprint and Sprint employees contributed approximately \$3.75 million to the Kansas City metro area through donations, community sponsorships and volunteer hours, including pledging more than \$570,000 to **United Way of Greater Kansas City** and providing more than 100,000 meals for hungry residents in Kansas City through donations to **Harvesters**.

Sprint is also a proud supporter of the 1 Million Project Foundation whose mission is to help 1 million high school students who do not have reliable Internet access at home reach their full potential by giving them mobile devices and 10 GB of free high-speed Internet access per month. In two years, the initiative has connected 226,000 students total across 33 states (including more than 7,000 students right here in Kansas City) with free internet access and devices.

The company also earns national recognition for the Kansas City metro area as a center of innovation and technology. As part of this commitment, Sprint opened the award-winning Sprint Accelerator in Kansas City. The accelerator space is used to deliver year-round programming, including mentor engagement, STEM programs, entrepreneurial community collaboration, and community coworking space.

For more information, visit www.sprint.com.



Some of our newest members were recognized with new member plaques presented by Stacey Cowan, Membership Director, at Wednesday Wake-up last month at **Menorah Medical Center**. Receiving plaques were Matt Gibson, **KC Disposal**; David Dow, **Advanced Sports & Family Chiropractic & Acupuncture**; Karen Neal, **Align by Design**; Reese Bennett, **Athletico Physical Therapy**; Courtney Erdley, **Johnson County Imaging Center**; Whitney Butler, **HopeKids Kansas City**; Adam Doran and Andrew Stafford, **PREVAIL**; and Stacey Holt, **Partners in Primary Care**.



The Chamber helped store representatives celebrate a ribbon cutting for the grand reopening of **ALDI USA's** remodeled store at 4801 Roe Boulevard. The roughly 14,500-square-foot store is the last of the large-scale stores the company plans to build. Locally, ALDI is investing \$35 million to update 22 stores in the Kansas City metro. For more information: (913) 768-1119 or www.aldi.us.



City Council President John Thompson, Chamber Vice President Kevin Walker, Chamber EDC Director of Recruitment & Retention Tim Holverson and Chamber Diplomats helped Reese Bennett and his team celebrate a ribbon cutting for the opening of **Athletico Physical Therapy**, 7212 West 135th Street. Athletico offers a variety of physical therapy, rehabilitation and work comp services to help you get back to doing what you love doing. For more information: (913) 275-5343 or www.athletico.com.

Inc. 5000 2019 List includes 12 Overland Park companies

Overland Park companies made a strong showing again on this year's Inc. 5000 list of fastest growing companies in the country. Each year, *Inc. Magazine* ranks the top 5000 qualifying companies (must generate at least \$100,000 in revenue in 2015, at least \$2 million in revenue in 2018, and be privately owned), giving readers a clue as to what companies may become household names in the future. Companies are ranked by revenue growth from 2015 through 2018. This year, 12 Overland Park-based companies made the top 5000. Included on this prestigious list are three

Overland Park Chamber members – **Rx Savings Solutions**, **DEG** and **Veracity Consulting**. **Rx Savings Solutions** ranked number 1527, making its second appearance. Offering a patented engagement software solution, the company empowers employers and employees to act as educated consumers in the health care market. Led by CEO Michael Rea, the company achieved its ranking with a three-year growth rate of 271%. Rx Savings Solutions was the fourth highest ranked Overland Park company on the Inc 5000 list.

DEG made its ninth appearance on the Inc. 5000 list. This year DEG, led by CEO Neal Sharma, clocked in with a three-year growth rate of 138% and brought in \$63.8 million in revenue in 2018. The sixth highest ranking Overland Park firm on the list at number 2752, DEG is an advertising and marketing firm that serves companies with digital marketing, integrated e-commerce, social media, and collaboration services. **Veracity Consulting** makes its debut on this year's list at number 4877. Led by CEO and founder Angela Hurt, the company works with businesses to bridge the gap between their business and technology by creating customized information technology solutions. Found-

ed in 2006, Veracity Consulting has seen a three-year growth rate of 56% and brought in \$18.3 million in revenue in 2018. The firm was ranked eleventh among Overland Park companies on the list and number 25 among Kansas companies on the list.

Other Overland Park companies on the list:
 #82 – Dynamic Logistix
 #147 – Sethmar Transportation
 #935 – Global Soft Systems
 #1901 – Inside Ventures
 #2812 – Platinum Realty
 #3069 – Facility Systems
 #3312 – Propio Language Services
 #4717 – Dimensional Innovations
 #4920 – Avenue Link

For more on the 2019 list, [click here](#).



Dr. Roy Jensen, director of the **The University of Kansas Cancer Center**, shared his leadership insights at our most recent program in the Executive Leadership Series that is sponsored by **First National Bank**.

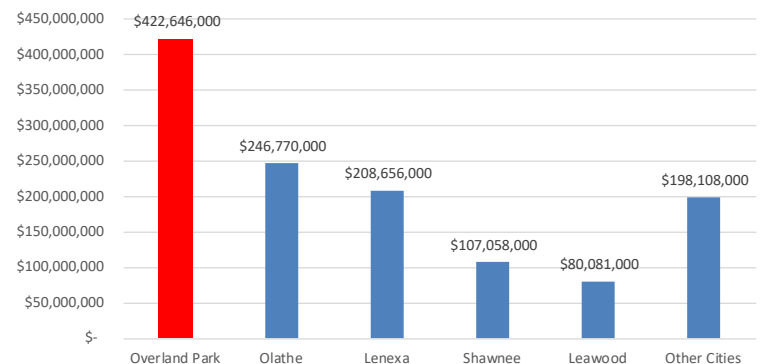
Building Permits in Overland Park				
	New Commercial	Institutional, Schools	Other Commercial	Totals
July 2019	7	0	47	54
Square Feet	247,530	0	7,920	255,450
Value	\$34,880,963	\$0	\$13,473,280	\$48,354,243

– City of Overland Park

Unemployment		
	July 2019	July 2018
Overland Park	3.3%	3.3%
Johnson County	3.3%	3.3%
Kansas City Metro MSA	3.3%	3.5%
State of Kansas	3.8%	3.8%

(These percentages are not seasonally adjusted)
 – Kansas Labor Information Center (KLIC)

Overland Park Retail Sales May 2019



Thank you to our 2019 Sponsors!

Corporate Partners



9001 West 110th Street, Suite 150
Overland Park, Kansas 66210
(913) 491-3600 • www.opchamber.org

Corporate Sponsors

[Affinis Corp](#)

[CommunityAmerica
Credit Union](#)

[First National Bank](#)

[Foulston Siefkin LLP](#)

[JE Dunn Construction Company](#)

[Johnson County
Community College](#)

[Kansas City Power & Light](#)

[Kansas Gas Service](#)

[Saint Luke's Health System](#)

[The University of Kansas
Edwards Campus](#)

Leadership Circle Sponsors

AdamsGabbert

Fortune Financial Advisors, LLC

To add your name to this list each month,
contact Tracey Osborne Oltjen
at (913) 491-3600 or
tosborne@opchamber.org.

Member News & Events

The Builders' Association Industry Expo is 4-7 p.m. on **September 18** at Bartle Hall. www.buildersassociation.com

The 15th annual Strokes for Stroke Golf Classic presented by **MidAmerica Rehabilitation Hospital** is **September 20**. www.midamericarehabhospital.com

The Fall Parade of Homes presented by the **Home Builders Association of Greater Kansas City** is **September 28-October 13**. www.kcparadeofhomes.com

Baker University's Bachelor of Science in Nursing program was ranked #1 in Kansas by *RN Careers*.

The City of the Overland Park's new chief information officer, Tony Sage, starts September 25.

AdventHealth Shawnee Mission announced Kathryn Wiltse as the new regional chief legal officer for the Mid-America Region of AdventHealth.

Affinis Corp has hired Scott Crain as a senior project manager.

Harmon Construction has hired Sean Harmon as a project manager.

St. Joseph Medical Center announced these new hires: Dr. Ahmad Almubaslat for the hospital's new outpatient endocrinology clinic; Dr. Frank Holladay, neurological surgeon, in conjunction with its new 24/7 neurosurgery coverage, and Dr. Clint Gates, general surgeon.

Terracon named Jason Sander as National Director for Material Services.

Veracity Consulting has hired Patrick Shore as vice president of innovation.

The **Terracon** Foundation has awarded over \$98,000 in community and university grants. The Terracon Foundation was established with the goal to reach out and become a real part of the lives of company employees and the communities where they live and work.

To submit company news, [click here](#).

To submit company events, [click here](#).