

Business Perspective

July 2019

Overland Park celebrates 20th anniversary of Sister City relationship in Germany

Overland Park leaders recently were in Germany to celebrate the 20th anniversary of the Sister City relationship with the City of Bietigheim-Bissingen. Ceremonies, dinners and the dedication of the Overland Park Garten (shown below) continued to forge meaningful business and cultural relationships between the two cities. Read more about the experience in Tracey Osborne Oltjen's President's Message on page 2.



The 2019 Leadership Overland Park class graduated last month. For more on their class project, see pages 8-9.

Our Mission:

To enhance the business environment and quality of life in our community.



Chamber Calendar

Leads Groups meetings

Chamber Leads Groups meet 11:30 a.m.-12:30 p.m. the 1st and 3rd Thursdays; 11:30 a.m.-12:30 p.m. the 2nd and 4th Mondays; and 8:00-9:00 a.m. the 2nd and 4th Tuesdays.

Wednesday Wake-up

Wednesday, July 10, 2019 - 8:00-9:00 a.m.

Floor & Decor, 7601 Frontage Road
Free and open to Chamber members only

Young Professionals Mix & Mingle

Wednesday, July 24, 2019 - 5:00-6:30 p.m.

Rock & Brews, 5701 West 135th Street
Free to Chamber members; \$10 for non-members

Public Policy & Advocacy Committee

Friday, August 9, 2019 - 12:00-1:30 p.m.

Overland Park Chamber, 9001 West 110th Street
\$15 per person for members only; lunch included.

To register for events, [click here](#)
or call (913) 491-3600.

Ribbon cuttings & groundbreakings

Monday, July 1 - 9:00 a.m.

Brew Haha Coffee, 10332 Mastin Street

Thursday, July 11 - 8:30 a.m.

Goodwill Overland Park, 7241 West 135th Street

Chamber Board and Staff

BOARD OFFICERS:

Mike Hess, *Chairman*
HNTB Corporation

Bobby Olm-Shipman, *Chair-Elect*
Saint Luke's South Hospital

Bill Ferguson, *1st Vice Chairman*
Central Bank of the Midwest

Steve Troester, *2nd Vice Chairman*
PGAV Architects, Inc.

Doug Lynn, *Secretary*
Sprint

Chris Wally, *Treasurer*
Wally & Co.

Brett Bogan, *Past Chairman*
Spencer Fane LLP

BOARD MEMBERS:

Faruk Capan, **Intouch Group**

Greg Crowley, **Crowley Furniture**

Tim Danker, **SelectQuote**

Jim Edwards, **Nothing Bundt Cakes**

John Fuller, **DLR Group**

Dr. Michael Fulton, **Shawnee Mission School District**

Jim Hemenway, **Chicago Title**

Tom Herzog, **Netsmart Technologies**

Brenner Holland, **Hunt Midwest**

Craig Jeffries, **Empower Retirement**

Jodde Lanning, **Payne & Jones, Chartered**

Karsten Randolph, **AdventHealth Shawnee Mission**

Cindy Rock, **DexYP**

Stacy Rose, **AdamsGabbert**

Tony Rupp, **Foulston Siefkin LLP**

Matt Sheets, **First National Bank**

Joan Wells, **Wellington**

Mark Williams, **Garver**

EX-OFFICIO BOARD MEMBERS:

Dr. David Cook, **The University of Kansas Edwards Campus**

Bill Ebel, **City of Overland Park**

Mayor Carl Gerlach, **City of Overland Park**

Dana Markel, **Visit Overland Park**

Tracey Osborne Oltjen, CCE, **Overland Park Chamber**

Greg Wolf, **Dentons**

Brett Bogan, **Spencer Fane LLP**
[2019 Chairman of Overland Park Chamber Economic Development Council]

CHAMBER STAFF:

Tracey Osborne Oltjen, CCE, *President & CEO*

Stacey Cowan, *Membership Director*

Andie Drummond, *Member Services Coordinator*

Frank Ebling, *CFO*

Celia Fritz-Watson, IOM, *Director of Events & Member Services*

Tim Holverson, IOM, *Recruitment & Retention Director, Economic Development*

Chris Jackson, *EDC Policy & Communications Coordinator*

Beth Johnson, CECD, *Senior Vice President of Economic Development*

Stan Lawson, *Communications Director*

Erin Murray, *Assistant to the President*

Amanda Schumacher, *Special Projects*

Kevin Walker, IOM, *Vice President of Public Policy & Advocacy*

20 years and 4,789 miles

When I was in fourth grade, I had a pen pal in Finland. Pen pals were paired through "Big Blue Marble," a PBS program whose name was inspired by the Apollo 17 photo of the Earth that had been dubbed the "Blue Marble." The purpose was to introduce children to others in different parts of the country and the world. While my fourth grade friend Ulla and I eventually lost touch, I've been fortunate to find a host of new friends nearly 5,000 miles away in Bietigheim-Bissingen (BB), Germany – Overland Park's Sister City.

We recently celebrated the 20th anniversary of our Sister-City relationship which was initiated in February 1999, following an already successful twenty year partnership between Bietigheim's Musik Schule and our Shawnee Mission South Band. Our partnership or "twin town" designation as our Bietigheim friends call it, was designated through City Council resolution to create "economic and business opportunities, cultural and educational experiences for the citizens of Overland Park through long term municipal partnerships."

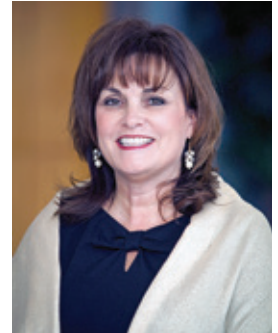
In April, Overland Park hosted a delegation from BB to commemorate the anniversary, and recently an Overland Park delegation visited Germany. I was fortunate to join them. Bietigheim is 15 miles north of Stuttgart, and is a redeveloped, historic city renowned for its beautiful 500-year-old city tower, wine growing tradition, public art and horse market. Two highlights of the trip were the dedication of a beautiful park in downtown Bietigheim named after Overland Park and the opportunity to hear the Bietigheim and Shawnee Mission South bands perform. Their joint performance of both the United States and German national anthems left no dry eyes in the audience.

Upon returning to Overland Park, Councilmember Paul Lyons reflected that he was so impressed by our hosts who have shared with us not just their hospitality, but their culture and politics. He said, "This is a valuable relationship we need to maintain," noting that the park dedication was very impressive to him as was the cultural exchange by the bands. He also enjoyed the organization of the city from a pedestrian, bicycle and auto perspective and believes there are opportunities for us to learn from this.



Atila Door and son Leon.

We connect on both professional and personal levels. Councilmember Dave White and BB City Councilor Atilla Door connected when the delegation visited Overland Park five years ago and Atilla brought his son Leon, then 12. Leon fondly remembers Dave for giving him a Royals ballcap (which he treasures still) and ordering him a hamburger (which he also loved) when he was not quite sure about the unfamiliar food the rest of the group was eating. Atilla's older son recently made a run for public office, crediting his two trips to Overland Park with the Musik Schule and his experiences here with his interest in government.



Tracey Osborne Oltjen, CCE, IOM
President & CEO
[@traceylosborne](https://twitter.com/traceylosborne)

(continued on page 5)

Business Perspective is published monthly by the Overland Park Chamber of Commerce.

9001 West 110th Street, Suite 150, Overland Park, KS 66210

Phone: (913) 491-3600 • Fax: (913) 491-0393 • opcc@opchamber.org • www.opchamber.org

Build your business network!

Wednesday Wake-up

A Business Before Hours

Wednesday, July 10

8:00-9:00 a.m.

Enjoy networking over coffee and breakfast foods at **Floor & Decor**, a leading specialty retailer of hard surface flooring where homeowners and professional contractors have access to superstore selection at warehouse prices with showroom quality.

Free and open to Chamber members only.

To register, [click here](#) or call (913) 491-3600

Hosted by



7601 Frontage Road

2019 Series Sponsor:



Washington Update



featuring

Congresswoman Sharice Davids

Join us for the Washington Update luncheon featuring Congresswoman Sharice Davids who will provide an update on important issues being debated in Washington, D.C. that impact our local business community.

Tuesday, August 27

12:00-1:30 p.m.

Marriott Kansas City Overland Park
10800 Metcalf Avenue

Members: \$38 per person
\$425 for a reserved table of 10

Non-members: \$48 per person
\$525 for a reserved table of 10
(Lunch is included)



To register, [click here](#) or call (913) 491-3600



Young Professionals

Mix & Mingle

Wednesday,

July 24

5:00 - 6:30 p.m.

Free to Chamber members;
\$10 for non-members

To register, [click here](#) or call (913) 491-300.

Rock & Brews

5701 West 135th Street

Click below for event details

Executive Leadership Series

INSIGHTS FROM THE TOP
Overland Park Chamber of Commerce

Join us for these programs featuring executive insight on business leadership.

Proudly sponsored by:



Thursday, August 22

7:30-9:00 a.m.

DoubleTree by Hilton Kansas City-Overland Park

10100 College Boulevard

featuring

Dr. Roy Jensen, Director

The University of Kansas Cancer Center



Members: \$30 per person or \$330 for a reserved table of 10
Non-members: \$40 per person or \$440 for a reserved table of 10

To register, [click here](#) or call (913) 491-3600

FRIENDS OF THE FARMSTEAD
PART OF THE ARTS & RECREATION FOUNDATION OF OVERLAND PARK

MOON SHINE SOIREE ON THE FARM

SEPTEMBER 7th, 2019

BEER, WINE, BBQ & COUNTRY MUSIC

Put on your jeans and boots, leave the kids at home, and join us for a country party under the stars at the Deanna Rose Farmstead.

TICKETS: \$60
ALL-INCLUSIVE

MoonShineOnTheFarm.com

NEW CHAMBER MEMBERS

Welcome new members!

We are pleased to introduce these new Chamber members:

3R Gems LLC

Paul Singh, Owner
700 South Jaide Lane
Olathe, KS 66061
(913) 940-1222
3rgems@gmail.com
www.3rgems.com
Jewelry, Appraisers

Avenue 82

Amber Doumitt, Director of Operations
82nd Street & Metcalf Avenue
Overland Park, KS 66204
(816) 898-3519
adoumitt@epcrealestate.com
www.epcrealestate.com
Office Space

Beauty Brands

Dakota McMurdo, General Manager
7501 West 119th Street
Overland Park, KS 66213
(913) 663-4848
store101@beautybrands.com
www.beautybrands.com
Retail, Beauty Services

Crushed Red

Powell Kalish, Co-Founder
10640 Roe Avenue
Overland Park, KS 66207
(913) 831-8484
overlandpark08@crushed-red.com
www.crushed-red.com
Restaurants, Caterers

Crux KC

Melea McRae, Founder & CEO
2100 Central Street, Suite 01A
Kansas City, MO 64108
(816) 381-2600
melea@cruxkc.com
www.cruxkc.com
Marketing Services, Business Consultants

EPC Real Estate Group

Michael McKeen, Principal
8001 Metcalf Avenue, Suite 300
Overland Park, KS 66204
(816) 838-0789
info@epcrealestate.com
www.epcrealestate.com
Real Estate - Developers

Goodwill Western Missouri & Eastern Kansas

7131 West 135th Street
Overland Park, KS 66223
(913) 402-7226
www.mokangoodwill.org
Non-Profit Organizations, Thrift Shops

Goodwill Western Missouri & Eastern Kansas

Jeanine Conrady, Fund Development
1817 Campbell Street
Kansas City, MO 64108
(816) 842-7425
jconrady@mokangoodwill.org
www.mokangoodwill.org
Thrift Shops, Non-Profit Organizations

IHOP 3658 – Opening Soon!

Michael Williamson, District Manager
8400 West 151st Street
Overland Park, KS 66223
(913) 608-5255
mwilliamson@lansingihop.com
www.ihop.com
Restaurants

N2 Publishing

Liz Ferrigno, Owner
5701 West 148th Place
Overland Park, KS 66223
(913) 242-5766
liz.ferrigno@n2pub.com
www.n2pub.com
Advertising

Onspring Technologies LLC

Chris Pantaenius, CEO
8500 West 110th Street, Suite 220
Overland Park, KS 66210
(913) 601-3943
deena.stevens@onspring.com
www.onspring.com
Computer Software & Services

Saint Luke's Community Hospital- South Overland Park

7651 West 159th Street
Overland Park, KS 66085
www.saintlukeskc.org
Hospital, Health Care

Staybridge Suites

Shannon Turgeon, General Manager
7020 West 108th Street
Overland Park, KS 66210
(913) 660-8041
www.staybridge.com
Hotels

Style Encore

Richard Sophir, Owner
11924 College Boulevard
Overland Park, KS 66210
(913) 766-1268
store@style-encoreoverlandpark.com
www.style-encoreoverlandpark.com
Retail
Referred by Dawn Crouch, Oliver Insurance

TravelHost Kansas City

Maria Andrew, Owner
P.O. Box 23056
Overland Park, KS 66283
(913) 433-3347
mandrew@travelhost.com
www.TravelHost.com/Kansas-city
Magazines, Publishers - Periodicals

Virtue Chiropractic

Loren Liming, DC, Doctor of Chiropractic
6511 West 119th Street
Overland Park, KS 66209
(913) 240-4833
lorenliming@gmail.com
Chiropractic Physicians - D.C., Health & Wellness

Vote in the primary election on August 6!

Your Vote Matters!

Primary Election Calendar:

- July 16 Last Day to Register to Vote
- July 17 Advance Voting by Mail Begins
- July 29 Advance Voting in Person Begins
- July 30 Advance Ballot Application Deadline

August 6 Primary Election – Polls open 7 a.m. to 7 p.m.

For voter resources, visit www.VoteJoCo.com



Please support fellow Chamber members who have made investments to enhance the prosperity of our community!

President's Message cont.

A special treat for me on this recent visit was the invitation to join one of our German hosts in his home for dinner. BB City Councilor Willie Dietz and his wife Brigitta and son Ludwig hosted two Shawnee Mission band members. Discussions of business, trade, politics, culture, travel and family – they're much the same no matter your location though your perspective and opportunities to learn are much expanded. Willie had fond memories of our last trip to BB five years ago and his many conversations with our Chamber Chairman at that time, Jim Holland. I was impressed that he had readily at hand the note Jim sent to him after our visit, as well as a copy of the email Willie sent him in response.

Kind of like the modern version of the Big Blue Marble. Suddenly 4,789 miles didn't seem that far away.



Willie and Brigitta Dietz

Member Renewals

We thank these companies for reinvesting in the Overland Park Chamber in May 2019:

40-49 Years

Reed Jeep Chrysler Dodge Ram

20-39 Years

APAC-Kansas, Inc.-Kansas City Division
 ASE Group, Inc.
 Ashok B. Bavishi, C.P.A.
 DoubleTree by Hilton Kansas City-Overland Park
 Drs. Hawks, Besler, Rogers, & Stoppel
 First National Bank
 Johnson County Government
 Menorah Medical Center
 Polsinelli
 Spencer Fane LLP
 U.S. Engineering Company
 Paul Henson Family YMCA
 Zurich North America Commercial

10-19 Years

Andre's Confiserie Suisse-Andre's Rivaz
 BHC RHODES
 Burnett Automotive, Inc.
 CBIZ Cottonwood
 Corporate Woods

Craig Sole Designs
 Drury Inn & Suites
 Fairfield Inn and Suites
 Fidelity Bank
 Johnson County Sheriff's Office
 Leawood Family Dental, LLC
 NBKC Bank
 Nolan Real Estate
 OptumRx
 Overland Chauffeured Services
 Overland Park Convention Center/Global Spectrum
 Rees Masilionis Turley Architecture
 Terracon

5-9 Years

Blue Valley Goodyear
 Fortune Financial Advisors, LLC
 Kansas State University Olathe
 LANE4 Property Group
 Mazuma Credit Union
 Overland Park Golf Club
 Pizza Shoppe-151st Street
 Rock & Brews Overland Park
 Savoy Apartments
 Sunny Day Pediatric Dentistry PA
 Titan Built, LLC
 UnitedHealthcare

1-4 Years

68's Inside Sports
 AdamsGabbert
 Avila University
 Better Homes and Gardens Real Estate Kansas City Homes
 Bury the Hatchet KC
 Diagnostic Imaging Centers, P.A.
 Digital Maelstrom
 The Freelance Exchange of Kansas City
 JAN-PRO Cleaning Systems
 KMBC-TV
 Kneaders Bakery and Cafe
 Lenny's Subs - 87th Street
 Mastin Discount Liquor LLC
 The Navigators
 NEAT Method Kansas City
 Quinn Real Estate Company
 Regular Guy Computer Services
 Rehabilitation Hospital of Overland Park
 Rockhurst University
 The Sheridan at Overland Park
 SLCKET
 Topgolf
 Which Wich? Superior Sandwiches
 Zoom Video Communications, Inc.



GRAND RE-OPENING



Western Missouri & Eastern Kansas



125 YEARS OF SERVICE
 1894 | 2019

Overland Park Store
 7241 W. 135th Street

Thursday, July 11 through Sunday, July 14

MON-SAT 9:00 AM to 9:00 PM
SUN 11:00 AM to 6:00 PM

Join Us for the Overland Park Chamber of Commerce Ribbon Cutting Ceremony

Thursday, July 11 at 8:30 AM

WIN prizes and receive discount coupons!



DIPLOMAT SPOTLIGHT / CHAMBER ANNOUNCEMENTS

Diplomat Q&A

**Michele Antonopoulos,
Villa Medici**

I am the Property Manager of [Villa Medici Apartments](#) with CF Real Estate Services, Inc.

Q: Who do you find is a best connection / partner for you in business?

A: Anyone who can help to enhance our residents' living and culture or assist us in budget management services.

Q: Why are you a Chamber Diplomat?

A: To network with people and become partners to increase our community awareness and hopefully grow our company presence as well.

Q: What is the best advice you've ever received?

A: Don't sweat the small stuff, treat others as you wish to be treated and you have to work hard to play hard! Wise advice from my parents!

Q: What is your hidden talent or ability?

A: Working under pressure and I love to entertain.

Q: What recent book / movie are you recommending to others?

A: I am a hopeless historical romance reader and Aquaman was the last movie I saw, it was terrific!

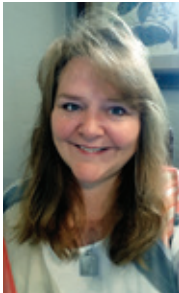
Q: What do you consider your greatest achievement, so far?

A: Multiple IREM/ARM awards and knowing that every person that I have mentored has succeeded in their roles to increase their knowledge and position.

Q: What is your motto?

A: Live life every day! Say "thank you" and make sure the people you care about know it.

To find out about becoming a Chamber Diplomat, contact Stacey Cowan at (913) 766-7604 or scowan@opchamber.org.



Receiving new member plaques last month from Chamber Membership Director Stacey Cowan and Chamber board member Dr. David Cook, **The University of Kansas Edwards Campus** (far left) and Chamber President Tracey Osborne Oltjen (far right) were Liz Ferrigno, **N2 Publishing**; Shana Powers, **New Horizons Computer Learning Centers**; Wayne and Tina Yake, **The Wooden Spoon**; Ryan Hembree, **Crux KC**; Kyle Russell, **Jackson Lewis P.C.**; Shannon Turgeon, **Staybridge Suites**; Mark Winters, **H&H Roofing and Restoration, LLC**; Chris Pantaenius, **Onspring Technologies LLC**; and Preston Carter, **Advantage Capital**.

GOLF TOURNAMENT
August 19 12:00 p.m. shotgun start
Nicklaus Golf Club at Lionsgate

Presenting Sponsor:
Advent Health
South Overland Park

Thanks to our Tournament Sponsors:

Eagle Sponsor: OVERLAND PARK KANSAS CONVENTION CENTER	Beverage Carts: Xcel ROOFING LoveOurRoof.com	Lunch: Chick-fil-℥ 135th and 69 Hwy	Awards Reception: HEREFORD SPORTS BAR & GRILL
Flight Prize Sponsor: Firestone COMPLETE AUTO CARE	Soft Drinks: HyVee 95th & Antioch	Signage: FAST SIGNS More than fast. More than signs. Overland Park	

Hole Sponsors:

- [Academy Bank](#)
- [Fortune Financial Advisors, LLC](#)
- [Overland Park Convention Center](#)
- [Atmos Energy Corporation](#)
- [INTRUST Bank](#)
- [PGAV Architects, Inc.](#)
- [Baron Contracting Corporation](#)
- [Landmark National Bank](#)
- [Polestar Plumbing, Heating and Air](#)
- [Cosentino's Market - Blue Valley](#)
- [McCownGordon Construction](#)
- [Renewal by Andersen](#)
- [Equity Bank](#)
- [Mid American Credit Union](#)
- [Scott Rice Office Works](#)
- [Firestone Complete Auto Care](#)
- [OMNI Human Resource Management](#)
- [Turner Construction](#)

RIBBON CUTTINGS



Chamber President Tracey Osborne Oltjen helped **Beauty Brands'** original founders and the company's new owners, Bob and David Bernstein, and their team celebrate a grand reopening at the company's first store at 7501 West 119th Street. For more information: (913) 663-4848 or www.beautybrands.com.



Mayor Carl Gerlach, City Councilmembers John Thompson, Fred Spears and Paul Lyons, Chamber President Tracey Lynn Osborne Oltjen and Chamber Diplomats helped **Zillow Home Loans** celebrate a grand reopening of its headquarters at 10975 El Monte Street. Zillow plans to add 100 new jobs, invest \$5 million in the local economy, and bring the total number of employees in Overland Park to more than 400. For more information: (888) 852-2212 or www.zillowhomeloans.com.



City Council President Terry Happer Scheier, Chamber EDC Director of Recruitment & Retention Tim Holverson and other business leaders helped Shon Yust, president; and his team at **Mercer Zimmerman** celebrate a ribbon cutting for the company's new headquarters at 8981 Bond Street. Mercer-Zimmerman was established in 1947 as a lighting representative for manufacturers that build and stand behind quality specification products. For more information: (913) 438-4546 or www.mzltg.com.



Mayor Carl Gerlach helped **Saint Luke's Health System** officials celebrate a ribbon cutting for Saint Luke's Community Hospital, 7651 West 159th Street. This new state-of-the-art emergency hospital brings faster, quality emergency care and a more streamlined patient experience to southern Johnson County. For more information: (913) 222-8395 or [click here](#).



Chamber President Tracey Osborne Oltjen helped Angela Hurt, CEO and Founder, and her team celebrate a ribbon cutting for the new headquarters of **Veracity Consulting**, 8100 Newton Street, #210. Veracity delivers customized IT solutions. For more information: (913) 945-1912 or www.engageveracity.com.



City Council President Terry Happer Scheier, Chamber EDC Director of Recruitment & Retention Tim Holverson and Chamber Diplomats helped owners Kyle and Heather Steppe celebrate a ribbon cutting for **KC Hemp Co.**, 8124 Floyd Street. KC Hemp Co. offers high quality hemp products and other holistic health options. For more information: (913) 242-7380 or www.kchempco.com.

Leadership class raises funds to support Safehome

by Elliot Payne
UnitedLex Corporation

In mid-January, professionals from many prominent sectors of the community assembled to form the Leadership Overland Park class of 2019. Together they focused on the common goal to learn more about the community in which they live, and become effective and dedicated leaders to serve the city and region. As part of this mission, the class was tasked with completing a philanthropic project to benefit a local community service organization.

The initial step included brainstorming sessions to lay out a feasible and productive plan of action, starting with choosing an organization that could best profit from what the group had to offer. With so many amazing institutions from which to choose the decision was difficult, but it was quickly clear that the leadership group wanted to help Overland Park's most vulnerable communities. Members of the team recounted a presentation during Health and Social Issues day about **SafeHome**, which offers temporary lodging and services to victims of domestic abuse, and a consensus was reached. It was clear this was a vital organization run by passionate employees who deserved attention and support.

With the beneficiary selected, the class was free to begin planning what they hoped would be a prolific fundraising strategy. One of the earliest ideas was to host a

volleyball tournament with teams sponsored by the companies of the leadership members. The idea gained traction as team members successfully sourced for players and funds. As the fundraising effort came together, the team reached out to SafeHome to crystalize a concrete goal and found that the facility needed new storage sheds for bikes and scooters for the children staying at the facility. The price tag was set at approximately \$9,000, giving the team a specific goal as they continued their fundraising efforts.

In late April the teams converged on Volleyball Beach in Martin City for the tournament. The turnout was excellent, with 12 teams participating and \$15,275 raised, far exceeding the target. The excess funds were given directly to SafeHome during a ceremony on June 19, to be used as they saw fit to support their clients and employees.

In addition to the direct funds, a delegation from the group went onsite to SafeHome on June 12 to help tackle several items from the

ever-growing list of tasks at the facility. Leadership Overland Park members helped with disassembling and reassembling shelves, painting an office, cleaning toys and helping to build the utility sheds. They were even able to share popsicles with some of the residents. It was a wonderful afternoon made all the better by serving such a worthy organization.

All told, the 2019 class project was a resounding success. The collaboration and planning went seamlessly, and the support and energy of the team was inspirational. The team formed an unquestionable bond during these last months and most certainly will continue to meet as a group to support more amazing programs offered around the beautiful city of Overland Park.





Volleyball tournament winners:



First place – Empower Retirement



Second place – St. Joseph Medical Center



Third place – JE Dunn Construction Company

Thank You to these Donors:

- AdventHealth Shawnee Mission
- Agenda: USA
- Julie Anderson
- Robert Asquith
- BackLotCars
- Jerry Bales
- Diana Beckman
- Amber Beverlin
- Black & Veatch
- Lindsay Brechler
- Janelle Brower
- BT Advisors
- Michael Burton
- Marshaun Butler
- Jenifer Clausen
- Commerce Bank
- CommunityAmerica Credit Union
- Keith Cummer
- DLR Group
- Empower Retirement
- First National Bank
- Carrie Gardner
- Carli Good
- HNTB Corporation
- Kaitlyn Hoefler
- John Holloway
- Crystal Howard
- Justin Howard
- Jeff Hoyer
- JE Dunn Construction Company
- Matt Kiehne
- Mike Levitan
- Phoebe Lewis
- Steven Lucas
- Tara Markley
- MarksNelson LLC
- Mary Matos
- Martin City Volleyball Beach*
- McCownGordon Construction
- Menorah Medical Center
- Matt Miller
- Tom Mitchell
- Casey Murray
- Greg Musil
- Kaitlyn Nickel
- Pat and Shannon O'Bryan
- Olsson
- Kristi O'Neal
- Aaron Otto
- Kelly Otto
- Overland Park Regional Medical Center
- Don Payne
- Elliot Payne
- Susan Pekarek
- John Ruddy
- Laura Schieber
- Teresa Schmitz
- Shaun Shufelberger
- Jennifer Smith
- St. Joseph Medical Center
- Patty Stanfield
- Rita Stollmam
- Terracon
- Sean Tucker
- Christopher Villarreal
- Josh Vincent
- Visit Overland Park
- Lori Vogelsberg
- Callie Weitzel
- Kelly Wessel
- Mike White

*In-kind donation

Chamber Foundation accepting 2020 Leadership nominations

The Overland Park Chamber Foundation is accepting nominations for the 2020 Leadership Overland Park program beginning in January.

Leadership Overland Park is a civic leadership program that educates participants about the issues facing Overland Park, Johnson County and the metropolitan region, and provides opportunities to engage with organizations resolving these issues. The program focuses on information, education and discussion of local and regional assets, challenges and opportunities.

Class members participate in 10 full-day sessions from January to June. Sessions focus on government, history, education, politics and issues facing the city, county, metro area and state.

The deadline for nominations is September 6, 2019. Completed applications from nominees will be due on October 11. The nomination form is available on the Leadership Overland Park page – [click here](#) – under the Chamber Programs tab at www.opchamber.org or call (913) 491-3600.

DIPLOMAT SPOTLIGHT / NEW MEMBERS

Wednesday Wake-up

A Business Before Hours

hosted on June 12 by



Patty Robb, **Patty Robb Consulting**; Sidra Connell, **Jason's Deli**; David Freisner, **Fortune Financial Advisors**.



Chris Wassel, **Equity Bank**; Ryan Hembree and Stacy Stephens, **Crux KC**.



Ashton Wells, **American Cancer Society**; was a lucky door prize winner.



Ashlee Carroll and Brianna Langley, **Great Western Bank**; Matt Maciel, **Maciel Wealth Management**.

Sponsor Spotlight:



Understanding the needs of Kansas City area employers and the current and emerging workforce drives decision-making at the **University of Kansas Edwards Campus** (KUEC). By working with business leaders, community colleges and school districts, KUEC makes sure it offers the most relevant degree programs, academic certificates, and professional and continuing education programs. Receive the quality education you expect from KU through the Overland Park campus or online with programs and services designed for adult learners.

How can you and your organization benefit from KUEC programs?

- Enroll in graduate and undergraduate degree programs, academic certificates. You'll find more than 50 undergraduate and graduate degrees, certificates and professional education programs.
- Learn from continuing education courses. Fulfill professional requirements and further your career in leadership, communication, information technology, engineering, aerospace, social sciences, law enforcement, fire and rescue, and more.



- Advance your workforce with training programs. Bring university quality to your internal training programs with engaging instruction about in-demand topics including leadership, communication, workplace culture, diversity, Lean Six Sigma, project management, information technology and more, delivered at your location, the KUEC campus or online.
- Attend free webinars and seminars. KUEC offers free programs to enhance learning about topics important to today's businesses.
- Share info about the Degree in 3 program. KUEC partners with three local community colleges and ten K-12 school districts to guide students to a bachelor's degree in three years.
- Learn for fun with Osher. You'll love the Osher Lifelong Learning Institute noncredit enrichment courses with a special focus for folks "50 and better."

- Reserve state-of-the-art meeting facilities. KUEC has a full-service event planning staff to take care of your next meeting.

KU Edwards opened in 1992, and has since contributed well over \$400 million to the Johnson County economy through education, research and service initiatives.

Learn more at www.edwardscampus.ku.edu.

Partner Spotlight: EMPOWER™ RETIREMENT

Over 9 million people trust Empower to help them reach the retirement they imagine. Empower partners with 39,000 organizations across the country to administer over \$600 billion in assets¹. This is what they do every day.

More than 6,000 associates work at **Empower Retirement** worldwide, with over 700 at 11500 Outlook Street in Overland Park¹.

Through the A.C.T. program (Associates. Community. Together.), Empower gives associates company-paid volunteer time and matching donations to support causes closest to their hearts in the Greater Kansas City community. Here are just a few of the ways associates take action:

- Empower teamed up with the American Lung Association in Kansas & Greater Kansas City to sponsor the Fight For Air Climb.
- Empower volunteers gave back to Harvesters and Giving the Basics by donating and packaging boxed lunches and personal care items for those in need.
- In partnership with Good Sports and Kansas City Boys and Girls Club, Empower team members helped distribute sports equipment to schools and other organizations.
- Associates volunteered at Heart of America Stand Down to provide homeless veterans with short- and long-term resources needed to begin rebuilding their lives.
- Empower was a sponsor of the 2019 Kansas City Corporate Challenge, benefiting Special Olympics KC Metro.



Empower flag football team at the 2019 Kansas City Corporate Challenge.

For more information, please visit:

- www.empower-retirement.com
- Twitter: [@EmpowerToday](https://twitter.com/EmpowerToday)
- Facebook: [@empowerretirement](https://facebook.com/empowerretirement)
- Instagram: [@empowerretirement](https://instagram.com/empowerretirement)
- LinkedIn: [@Empower Retirement](https://linkedin.com/company/empower-retirement)

¹As of March 31, 2019



Deb Miller, director of the Public Management Center at The University of Kansas, was the keynote speaker at last month's Leadership Overland Park Graduation Luncheon. Miller served as Kansas Secretary of Transportation from 2003 to 2011, her appointment spanning the terms of three Kansas governors making her the longest serving Secretary of Transportation in the state's history.

Unemployment

	May 2019	May 2018
Overland Park	2.8%	2.8%
Johnson County	2.8%	2.7%
Kansas City Metro MSA	3.0%	3.1%
State of Kansas	3.5%	3.3%

*(These percentages are not seasonally adjusted)
– Kansas Labor Information Center (KLIC)*

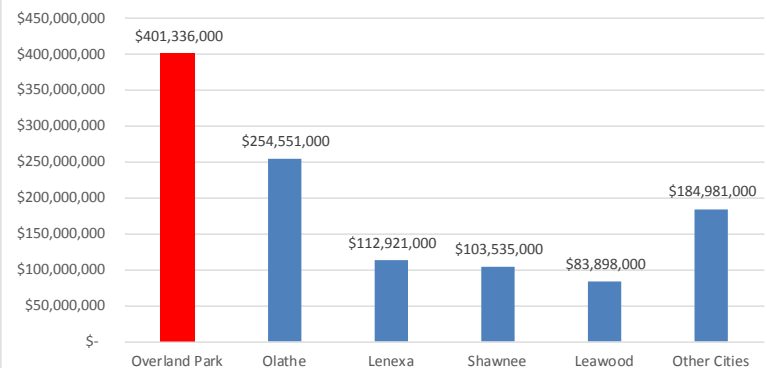
Building Permits in Overland Park

	New Commercial	Institutional, Schools	Other Commercial	Totals
May 2019	2	0	51	53
Square Feet	57,524	0	7,491	65,015
Value	\$14,385,452	\$0	\$24,020,497	\$38,405,949

– City of Overland Park

Overland Park Retail Sales

March 2019



Thank you to our 2019 Sponsors!

Corporate Partners



9001 West 110th Street, Suite 150
Overland Park, Kansas 66210
(913) 491-3600 • www.opchamber.org

Corporate Sponsors

[Affinis Corp](#)

[CommunityAmerica
Credit Union](#)

[First National Bank](#)

[Foulston Siefkin LLP](#)

[JE Dunn Construction Company](#)

[Johnson County
Community College](#)

[Kansas City Power & Light](#)

[Kansas Gas Service](#)

[Saint Luke's Health System](#)

[The University of Kansas
Edwards Campus](#)

Leadership Circle Sponsors

AdamsGabbert

Fortune Financial Advisors, LLC

To add your name to this list each month,
contact Tracey Osborne Oltjen
at (913) 491-3600 or
tosborne@opchamber.org.

Member News & Events

First National Bank is accepting community development grant applications through **July 8**.

Goodwill Overland Park, 7241 West 135th Street, is celebrating a grand reopening on **July 11**. To provide discount coupons for customer swag bags, mail them to Gregg Hibbeler, Goodwill, 1817 Campbell Street, Kansas City, MO 64108.

Edison Spaces announced a new grant program to help emerging Kansas City startups by offering three months of free office space. For details: [click here](#).

Terracon has acquired Environmental Services, Inc. and Geotechnical & Environmental Consultants, Inc. to enhance environmental, geotechnical resources in the southeast.

The University of Kansas Edwards Campus and **Johnson County Community College** have collaborated to create a bachelor's degree in American Sign Language & Deaf Studies.

More than a dozen Chamber members were included on Forbes Best-in-State Employers list.

St. Joseph Medical Center received the Healthgrades 2019 Patient Safety Excellence Award.

AdventHealth Shawnee Mission has hired Molly Haase as director of advocacy and Jimmy Bolanos as administrative director of strategic planning.

Camp Quality Missouri seeks event sponsors for its dinner and auction on **September 17**.

To submit news, [click here](#).

To submit events, [click here](#).