

Business Perspective

August 2019

Vote in the primary election on August 6!



Your Vote Matters!

Advance voting in Johnson County is available at seven convenient locations with extended hours.

For candidate surveys and videos of candidate interviews, visit www.VoteJoCo.com.

Leaders talk local transportation needs with federal representatives

Local and state leaders met last month with federal lawmakers to provide insight into the need to upgrade U.S. 69 Highway between 103rd and 167th streets – the busiest stretch of four-lane highway in Kansas. The federal lawmakers included U.S. Congressman Peter DeFazio, Chairman of the House Transportation and Infrastructure Committee; U.S. Congressman Rick Larsen, who is on the House Transportation and Infrastructure Committee and is Chair of the Aviation Subcommittee; and U.S. Congresswoman Sharice Davids, who is on the Transportation and Infrastructure Committee.

Local officials have been lobbying state and federal representatives, providing multiple



tours of the highway and meeting with lawmakers to continue to press the need to improve the efficiency and safety of U.S. 69. The City of Overland Park recently applied for a \$2 million federal grant to further plan and design the next phase of improvements.



Mayor Carl Gerlach and Chamber President Tracey Osborne Oltjen joined WellSky CEO Bill Miller and Ken Block, **Block Real Estate Services, LLC**, in celebrating a ribbon cutting for the new world headquarters of WellSky Corporation, 11300 Switzer Road in CityPlace. A leading health and community care technology company, WellSky will continue expanding its workforce at its new world headquarters. For more information: www.wellsky.com.

Our Mission:

To enhance the business environment and quality of life in our community.



Chamber Calendar

Member Orientation

Thursday, August 8 - 4:00-5:00 p.m.
Overland Park Chamber, 9001 West 110th Street
Free and open to Chamber members only
2019 Series Sponsor: Lettinn & Associates

Public Policy & Advocacy Committee

Friday, August 9 - 12:00-1:30 p.m.
Overland Park Chamber, 9001 West 110th Street
\$15 per person for members only; lunch included.

Wednesday Wake-up

Wednesday, August 14 - 8:00-9:00 a.m.
Menorah Medical Center, 5721 West 119th Street
Free and open to Chamber members only
2019 Series Sponsor: Fortune Financial Advisors

Annual Golf Tournament - **Sold Out!**

Monday, August 19 - Shotgun start at noon
Nicklaus Golf Club at LionsGate, 14225 Dearborn
Sponsored by AdventHealth South Overland Park

Executive Leadership Series

Thursday, August 22 - 7:30-9:00 a.m.
Featuring Dr. Roy Jensen, KU Cancer Center
DoubleTree by Hilton, 10100 College Boulevard
\$30 per person or \$330 for a table of 10 for members
\$40 per person or \$440 for a table of 10 for non-members
2019 Series Sponsor: First National Bank

Washington Update

Tuesday, August 27 - 12:00-1:30 p.m.
Featuring U.S. Congresswoman Sharice L. Davids
Marriott Kansas City Overland Park, 10800 Metcalf Avenue
\$38 per person or \$425 for a table of 10 for members
\$48 per person or \$525 for a table of 10 for non-members

Young Professionals Learning@4

Tuesday, August 27 - 4:00-6:30 p.m.
Featuring the Leadership Overland Park program
BHC RHODES, 7101 College Boulevard, Suite 400

Community Blood Drive

Hosted by Overland Park Young Professionals
Wednesday, August 28 - 12:00-4:00 p.m.
Overland Park Chamber, 9001 West 110th Street
Schedule an appointment at www.savealifenow.org

To make reservations, [click here](#).

Ribbon cuttings & groundbreakings

Thursday, August 8 - 3:00 p.m.
Equity Bank, College Boulevard & Metcalf Avenue

Thursday, August 15 - 8:30 a.m.
ALDI, 4801 Roe Boulevard, Roeland Park

Thursday, August 22 - 4:00 p.m.
Saint Luke's Rehabilitation Institute, 12300 Metcalf Avenue

Chamber Board and Staff

BOARD OFFICERS:

Mike Hess, **Chairman**
HNTB Corporation

Bobby Olm-Shipman, **Chair-Elect**
Saint Luke's South Hospital

Bill Ferguson, **1st Vice Chairman**
Central Bank of the Midwest

Steve Troester, **2nd Vice Chairman**
PGAV Architects, Inc.

Doug Lynn, **Secretary**
Sprint

Chris Wally, **Treasurer**
Wally & Co.

Brett Bogan, **Past Chairman**
Spencer Fane LLP

BOARD MEMBERS:

Faruk Capan, **Intouch Group**

Greg Crowley, **Crowley Furniture**

Tim Danker, **SelectQuote**

Jim Edwards, **Nothing Bundt Cakes**

John Fuller, **DLR Group**

Dr. Michael Fulton, **Shawnee Mission School District**

Jim Hemenway, **Chicago Title**

Tom Herzog, **Netsmart Technologies**

Brenner Holland, **Hunt Midwest**

Craig Jeffries, **Empower Retirement**

Jodde Lanning, **Payne & Jones, Chartered**

Karsten Randolph, **AdventHealth Shawnee Mission**

Cindy Rock, **Thryv**

Stacy Rose, **AdamsGabbert**

Tony Rupp, **Foulston Siefkin LLP**

Matt Sheets, **First National Bank**

Joan Wells, **Wellington**

Mark Williams, **Garver**

EX-OFFICIO BOARD MEMBERS:

Dr. David Cook, **The University of Kansas Edwards Campus**

Bill Ebel, **City of Overland Park**

Mayor Carl Gerlach, **City of Overland Park**

Dana Markel, **Visit Overland Park**

Tracey Osborne Oltjen, CCE, **Overland Park Chamber**

Greg Wolf, **Dentons**

Brett Bogan, **Spencer Fane LLP**
[2019 Chairman of Overland Park Chamber Economic Development Council]

CHAMBER STAFF:

Tracey Osborne Oltjen, CCE, **President & CEO**

Stacey Cowan, **Membership Director**

Andie Drummond, **Member Services Coordinator**

Frank Ebling, **CFO**

Celia Fritz-Watson, IOM, **Director of Events & Member Services**

Tim Holverson, IOM, **Recruitment & Retention Director, Economic Development**

Chris Jackson, **EDC Policy & Communications Coordinator**

Beth Johnson, CECd, **Senior Vice President of Economic Development**

Stan Lawson, **Communications Director**

Erin Murray, **Assistant to the President**

Amanda Schumacher, **Special Projects**

Kevin Walker, IOM, **Vice President of Public Policy & Advocacy**

Dog days no more

When I was a kid, they called these the dog days of summer. August was when we lazed around the pool maximizing our days until school started. When we squeezed in a last vacation. When we cherished evenings on the porch with icy watermelon. Okay, maybe we still do these things, but now those dog days are a little more packed.

First, if you haven't voted, do it now! If you live in Johnson County you have a primary on August 6 no matter where you live. There are 11 candidates running for Johnson County Community College Board of Trustees; the primary narrows the field to six. Many cities have primaries (Overland Park has three) and there are school board races as well. Find candidate surveys, short, quick-to-watch interviews and voter information at www.VoteJoCo.com.

Primary turnout for local elections is typically low, so share with your friends, family and co-workers. In Kansas there's no reason to "forget" to vote because we can do it so easily. Vote in advance by mail or in person, or go to your nearby polling place in person on election day. Local government impacts your quality of life and business environment the most, so don't miss the opportunity to select the people who will determine the future of our region.

Also this month you should take a scan of the emerging leaders in your circle. Consider friends and colleagues to nominate for Leadership Overland Park 2020.

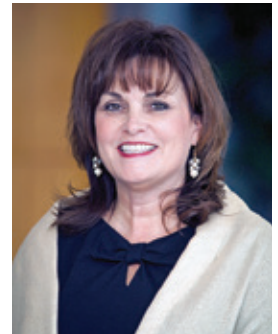
Developing leaders is a key mission for the Overland Park Chamber Foundation. Through Leadership Overland Park (LOP), our graduates have not only identified key challenges and areas for involvement, but also stepped into leadership roles on civic, non-profit and governmental boards and commissions regionally. In 36 years with 900 graduates, a number have run for office, serving at the local and state levels.

One of my favorite parts of my job is the opportunity to get to know the members of each year's class, from their leadership strengths, experiences and their dreams for our community. The 2019 class was thoughtful and engaged, and my final session discussion with them was a Strengths, Weaknesses Opportunities, Threats (SWOT) analysis of Overland Park. We discussed how to maximize what has made us a benchmark community, optimize opportunities and mitigate weaknesses.

Not surprisingly, they prioritized quality education as the key factor for relocation to Overland Park. They would like intentional focus on future development, including more connectivity, diversity in type/pricing of housing, public transportation and entertainment spaces. They lauded the transportation network and lack of congestion but cautioned that dialing back on resources for maintenance and future expansion is concerning. Low crime rate and access to quality health care received high marks. The discussion was very much in line with the goals of ForwardOP and what we hear from our Young Professionals.

Do you know someone who has a contribution to make? Perhaps now is the time to consider LOP for yourself. Nominations are due September 6. Nomination forms are available at [this link](#) or contact Celia Fritz-Watson at (913) 491-3600.

I hope you enjoy these last days of summer with some pool time or a nap in the shade . . . as long as you remember to vote. And nominate someone for LOP!



Tracey Osborne Oltjen, CCE, IOM
President & CEO
[@traceylosborne](https://twitter.com/traceylosborne)

Business Perspective is published monthly by the Overland Park Chamber of Commerce.

9001 West 110th Street, Suite 150, Overland Park, KS 66210

Phone: (913) 491-3600 • Fax: (913) 491-0393 • opcc@opchamber.org • www.opchamber.org

Build your business network!

Wednesday Wake-up

A Business Before Hours

Wednesday, August 14

8:00-9:00 a.m.

Enjoy networking over coffee and breakfast foods at **Menorah Medical Center.**

Hosted by



MENORAH MEDICAL CENTER

Menorah is a full-service, acute care hospital and ER providing compassionate care and some of the most advanced treatment options available in the Kansas City region.

5721 West 119th Street

Free and open to Chamber members only.

To register, [click here](#) or call (913) 491-3600



2019 Series Sponsor:



Washington Update



featuring

Congresswoman Sharice Davids

Join us for the Washington Update luncheon featuring Congresswoman Sharice Davids who will provide an update on important issues being debated in Washington, D.C. that impact our local business community.

Tuesday, August 27

12:00-1:30 p.m.

Marriott Kansas City Overland Park
10800 Metcalf Avenue

Members: \$38 per person
\$425 for a reserved table of 10
Non-members: \$48 per person
\$525 for a reserved table of 10
(Lunch is included)



To register, [click here](#) or call (913) 491-3600

Click the advertisement below for more information.

Executive Leadership Series

INSIGHTS FROM THE TOP
Overland Park Chamber of Commerce

Join us for these programs featuring executive insight on business leadership.

Proudly sponsored by:



Thursday, August 22

7:30-9:00 a.m.

DoubleTree by Hilton Kansas City-Overland Park
10100 College Boulevard

featuring

Dr. Roy Jensen, Director
The University of Kansas Cancer Center

In 2004, Dr. Roy Jensen was appointed director of The University of Kansas Cancer Center, which was designated a cancer center by the National Cancer Institute in July 2012. Dr. Jensen has more than 150 scientific publications and has lectured widely on the clinical and molecular aspects of breast cancer pathology.



Members: \$30 per person or \$330 for a reserved table of 10
Non-members: \$40 per person or \$440 for a reserved table of 10

To register, [click here](#) or call (913) 491-3600

FRIENDS OF THE FARMSTEAD
PART OF THE ARTS & RECREATION
DEPARTMENT OF THE CITY OF OVERLAND PARK

MOON SHINE ON THE FARM

SOIREE

SEPTEMBER 7th, 2019

BEER, WINE, BBQ & COUNTRY MUSIC

Put on your jeans and boots, leave the kids at home, and join us for a country party under the stars at the Deanna Rose Farmstead.

TICKETS: \$60
ALL-INCLUSIVE

MoonShineOnTheFarm.com

CHAMBER ANNOUNCEMENTS

Diplomat Q&A

Kirk & Teresa Reh, IDLife

Q: What is your company & describe your position?

A: We are Independent Associates and Executive Directors for [IDLife](#).

Q: Who do you find is a best connection / partner for you in business?

A: We use individually designed nutrition based on a HIPAA compliant assessment with exercise and nutrition focused DNA testing to eliminate the trial & error and guesswork all too often associated with nutrition and exercise programs. We work with any individual pursuing a healthy lifestyle and we partner with fitness and wellness professionals such as gym owners, trainers, doctors, chiropractors and physical therapists. We also work with companies interested in incorporating personalized nutrition into their corporate wellness program.

Q: Why are you a Chamber Diplomat?

A: To be more involved in the community and build stronger relationships within the Chamber.

Q: Where are you from / what brought you to Overland Park?

A: Teresa is from Olathe; Kirk grew up in Salina. We met at Kansas State, got married and moved to Overland Park in 1986.

Q: What is the best advice you've received?

A: Build your own business and be your own boss.

Q: What recent book / movie are you recommending to others?

A: *Unshakable* by Tony Robbins.

Q: What do you consider your greatest achievement so far?

A: Being together 36 years... married 33 years.

Q: What has been your favorite journey?

A: Our 30th anniversary trip to Italy and Switzerland.

To find out about becoming a Chamber Diplomat, contact Stacey Cowan at (913) 766-7604 or scowan@opchamber.org.



GOLF TOURNAMENT

August 19

Nicklaus Golf Club at Lionsgate

Presenting Sponsor:



Advent Health
South Overland Park

Thanks to our Tournament Sponsors:

Eagle Sponsor:



Beverage Carts:



Lunch:



Awards Reception:



Golf Ball Flight Prize Sponsor:



Soft Drinks:



Signage:



- Academy Bank
- Atmos Energy Corporation
- Baron Contracting Corporation
- Cosentino's Market - Blue Valley
- Equity Bank
- Firestone Complete Auto Care

- Fortune Financial Advisors, LLC
- INTRUST Bank
- Landmark National Bank
- McCownGordon Construction
- Mid American Credit Union
- OMNI Human Resource Management

- Overland Park Convention Center
- PGAV Architects, Inc.
- Polestar Plumbing, Heating and Air
- Renewal by Anderson
- Scott Rice Office Works
- Turner Construction



City Council President Terry Happer Scheier, Chamber EDC Director of Recruitment & Retention Tim Holverson and Chamber Diplomats helped owner Jason Presley, his family and staff celebrate a ribbon cutting for the grand opening of **Brew Haha Coffeehouse**, 10332 Mastin Street. Brew Haha is a friendly and relaxing espresso bar where you can relax and recharge - proving that #LocalCoffeeRocks. For more information: (913) 563-0447 or www.brewhahacoffeehouse.com.

Chamber to release Voting Record

The Overland Park Chamber of Commerce soon will release its 2019 Kansas Legislative Session Final Report and Voting Record for Johnson County legislators' actions on business-centric issues and votes related to the Chamber's legislative agenda.

Using feedback from Chamber members, the Chamber's Public Policy and Advocacy

Committee and Board of Directors established its annual legislative agenda to focus on priority issues that enhance quality of life attributes that make Overland Park attractive to businesses and help it continue to be recognized as a leading community in the nation.

The Voting Record will be available on the Public Policy page at www.opchamber.org.

Chamber Foundation accepting 2020 Leadership nominations

The Overland Park Chamber Foundation is accepting nominations for the 2020 Leadership Overland Park program, which begins in January 2020.

Leadership Overland Park is a civic leadership program that educates participants about the critical issues facing Overland Park, Johnson County and the metropolitan region, and provides opportunities to engage in organizations that resolve these issues. The program focuses on information, education and discussion of local and regional assets, challenges and opportunities.

LEADERSHIP

OVERLAND PARK

Class of 2020

Class members participate in 10 full-day sessions from January to June. Sessions focus on government, history, education, politics and issues facing the city, county, metro area and state.

The deadline for nominations is September 6, 2019.

Completed applications from nominees will be due on October 11.

The nomination form is available under at www.opchamber.org – [click here](#) – or call (913) 491-3600.

Click the advertisement below for more information.

SAVE THE DATE! GOOD MORNING GMP OVERLAND PARK!

Friday, October 25

7:30-9:00 a.m.

DoubleTree by Hilton Kansas City-Overland Park

10100 College Boulevard

Proudly sponsored by

Humana

Chamber Annual Meeting

Thursday, December 5

11:30 a.m.-1:30 p.m.

Marriott Kansas City Overland Park

10800 Metcalf Avenue

Keynote Speaker: Rebecca Ryan

Human Spark Plug, Futurist & Economist

Event Sponsor:

SECURITY BANK
OF KANSAS CITYSM

Other Sponsorships Available!

Contact Celia at (913) 766-7603 or critzwatson@opchamber.org

JOIN US FOR THE MOST BEAUTIFUL BEER TASTING!

BOTANICAL BREWFEST

OVERLAND PARK ARBORETUM & BOTANICAL GARDENS

OCTOBER 12, 2019

ALL-INCLUSIVE TICKETS AVAILABLE AT OPABG.ORG

FRIENDS OF THE ARBORETUM
PART OF THE ARTS & RECREATION
FOUNDATION OF OVERLAND PARK

NEW MEMBERS / RECENT EVENTS

Welcome new members!

We are pleased to introduce these new Chamber members:

Advanced Sports & Family Chiropractic & Acupuncture

David Dow, Practice Rep
6701 West 121st Street, #200
Overland Park, KS 66209
(913) 643-1771
david.dow1971@gmail.com
www.asfca.com
Chiropractic Physicians - D.C.,
Acupuncturists

ALDI, Inc. - Store #59

Mark Bersted, Vice President
4801 Roe Boulevard
Roeland Park, KS 66205
(913) 768-1119
www.aldi.us
Grocers, Retail

Andy's Frozen Custard

Tracy Boschert, KC Marketing
9535 Metcalf Avenue
Overland Park, KS 66212
(913) 318-3200
marketing@eatandys.com
www.eatandys.com
Ice Cream & Frozen Desserts

Athletico Physical Therapy

Reese Bennett, Physical
Therapist, Clinic Manager
7212 West 135th Street
Overland Park, KS 66223
(913) 275-5343
overlandpark135th@athletico.com
www.athletico.com
Physical Therapists, Health &
Wellness

Athletico Physical Therapy

Andrew Kushner, Physical
Therapist
9544 Antioch Road
Overland Park, KS 66212
(913) 396-6756
overlandpark95th@athletico.com
[www.athletico.com/
overlandpark](http://www.athletico.com/overlandpark)
Physical Therapists, Health &
Wellness

BIBIBOP Asian Grill - Opening Soon!

11875 West 95th Street
Overland Park, KS 66214
(913) 271-8169
bwright@bibibop.com
www.bibibop.com
Restaurants

BIBIBOP Asian Grill - Opening Soon!

Betsy Wright, Director of
Marketing
6455 West 135th Street
Overland Park, KS 66223
(913) 271-8169
bwright@bibibop.com
www.bibibop.com
Restaurants

Edward Jones-Ben Custer

11512 West 135th Street
Overland Park, KS 66221
(913) 239-0185
Ben.custer@edwardjones.com
Financial Services, Investments

Health Resources by Humana

Cherie Givens, Associate
Director
7500 Metcalf Avenue
Overland Park, KS 66204
(816) 289-0651
cgivens1@humana.com
[www.healthresources-
byhumanakc.com](http://www.healthresources-byhumanakc.com)
Health Care

HopeKids Kansas City

Kristin Castle, Executive
Director
PO Box 11947
Kansas City, MO 64138
(816) 372-0311
kristin@hopekids.org
www.hopekids.org
Non-Profit Organizations
Referred by Britany Wehrmeister,
Overland Park Convention Center

Johnson County Imaging Center

Courtney Erdley, Director of Sales
11717 West 112th Street
Overland Park, KS 66210
(913) 469-8998
courtney.erdley@jocoimaging.com
www.johnsoncountyimaging.com
Health Care

KC Disposal

Matt Gibson, CEO
10011 Woodend Road
Edwardsville, KS 66111
(816) 388-9739
mgibson@kansascitydisposal.com
www.Kansascitydisposal.com
Trash Removal

Partners in Primary Care - Opening Soon!

Stacey Holt, Center Administrator
(816) 927-5245
sholt6@partnersinprimarycare.com
www.partnersinprimarycare.com
Health Care, Senior Citizen Services

Sleep Number-Corbin Park

Robert Gagliardi, Jr., Store
Manager
6725 West 135th Street
Overland Park, KS 66223
(913) 402-7564
sleepnumberoverlandpark_
corbinpark@sleepnumber.com
www.sleepnumber.com
Health & Wellness, Furniture Dealers

SVS Vision

Crystal Bradberry, Office
Manager
6635 West 135th Street
Overland Park, KS 66223
(913) 730-9750
cbradberry@svsvision.com
www.svsvision.com
Retail

WellSky Corporation

Heather Clark, Director of
Operations
11300 Switzer Road
Overland Park, KS 66210
(913) 307-1000
heather.clark@wellsky.com
www.wellsky.com
Technology, Health & Wellness

Zillow

Luke Bell, Government
Relations & Public Affairs Mgr.
10975 El Monte Street
Overland Park, KS 66211
(888) 852-2212
www.zillowhomeloans.com
Mortgages, Real Estate

Please support fellow
Chamber members who
have made investments
to enhance the prosperity
of our community!

Diplomats volunteer at Children's Mercy Hospital Kansas

As part of their quarterly
volunteer sessions, Chamber
Diplomats recently volunteered
at **Children's Mercy Hospital
Kansas** where they assembled
104 Happy Kits for pre-K and
school age kids visiting the
hospital.



City presents guest lecture on Small Scale Development

As part of a larger effort to review policies that support different housing products, the City of Overland Park has engaged with Incremental Development Alliance to conduct a technical review of the feasibility of small real estate development projects.

The City is presenting a public lecture on increasing housing choices through

small scale development, 7:00-8:00 p.m. on **August 13** at the **Overland Park Convention Center**.

Matthew Petty, a founding member at the INCDEV Alliance, will lead the talk on the small scale development movement.

For more information, [click here](#).

Member Renewals

We thank these companies for reinvesting in the Overland Park Chamber in June 2019:

50+ Years

Bear & Bear Associates
Family Tree Nursery
HNTB Corporation
Rau Construction Company

Kansas Policy Institute
KC Golf Classic
Lifestyle Publications
OKWU.edu
UnitedLex Corporation
Villa Medici

40-49 Years

Oak Park Mall
Overland Park Regional Medical Center

1-4 Years

Advantage Tech, Inc.
ALDI, Inc. - 135th Street
ALDI, Inc. - 95th Street
Autumn Leaves of Overland Park Avenue 81
Bassett Home Furnishings
Big Whiskey's
Blue Sky Fertility
The Brass Onion
Chicago Title
CliftonLarsonAllen LLP
Community Impact Solutions, LLC
Contract Furnishings
Corbin Crossing Apartments
CORE Strategies Physical Therapy
DeMarche Associates
Dewey's Pizza
Foodsby
Harvesters-The Community Food Network
Infinitas Coordinated Wealth Counsel
Initiatives, Inc.
Marquee Event Rentals
The Mixx - Hawthorne Plaza
Nature's Touch Cleaners
Phoenix South CBD Super Store
Tommy's Express Car Wash-Overland Park
War Horses for Veterans, Inc
World Class Unlimited, Inc.

20-39 Years

Claridge Court
The Culinary Center of Kansas City
Fisher Patterson Saylor & Smith, L.L.P.
Olathe Public Schools USD 233
Price Chopper Queen's-87th & Antioch
Santa Fe Body, Inc.

10-19 Years

Ajilon
Business Data Services LLC
Creative Planning
Display Studios
Financial Engines
Great Western Bank
Hutchins & Haake, LLC
Tallgrass Creek-Erickson Living
University of Saint Mary
Visit Overland Park

5-9 Years

Catholic Charities of Northeast Kansas
Gordon Biersch Brewery Restaurant
Kansas Asphalt, Inc.

Cowan receives national award

Congratulations to Chamber Membership Director Stacey Cowan on receiving her Silver Lifetime Achievement Award for \$300,000 and over in membership sales. She was presented the award at the 2019 national convention of the Association of Chamber of Commerce Executives.



Some of our newest Chamber members received their new member plaques at last month's Wednesday Wake-up networking event hosted by **Floor and Decor**. Receiving plaques from Membership Director Stacey Cowan and President Tracey Osborne Oltjen were Jim Raines, **Berkshire Hathaway HomeServices Kansas City Realty**; Richard & Claudia Sopher, **Style Encore**; Dr. Loren Liming, **Virtue Chiropractic**; Robert Gagliardi, **Sleep Number-Corbin Park**; Crystal Bradberry, **SVS Vision**; and Emily Parker, **Athletico Physical Therapy**.



City Councilmember Fred Spears, Chamber EDC Senior Vice President Beth Johnson and Chamber Diplomats helped owners Richard & Claudia Sopher celebrate a ribbon cutting for the opening of **Style Encore**, 11925 College Boulevard. Style Encore buys and sells gently-used women's clothing, shoes, handbags and accessories. They buy all day, every day, and pay cash on the spot. For more information: (913) 766-1268 or www.style-encoreoverlandpark.com.

RECENT EVENTS



City Councilmembers John Thompson and Rick Collins, Chamber EDC Senior Vice President Beth Johnson and Kansas City Royals' Sluggerrr-Kansas helped President & CEO Ed Lada, Jr., and his team celebrate the grand re-opening of the **Goodwill of Western Missouri & Eastern Kansas** store at 7241 West 135th Street. For more information: (913) 402-7226 or www.mokangoodwill.org.



City Council President Terry Happer Scheier, Chamber CFO Frank Ebling and other business reps helped celebrate improvements being made by **Pebb Enterprises** to Pinnacle Village at 119th and Conser streets. The 126,909-square-foot neighborhood center includes tenants **Beauty Brands**, **Goldfish Swim School** and many other retail businesses and restaurants. Leasing at Pinnacle is through **LANE4 Property Group** at (816) 960-1444.

Wednesday Wake-up

A Business Before Hours

hosted on July 10 by



Cindy Sims, **SIMSDirect LLC**; was a lucky door prize winner.





City Council President Terry Happer Scheier, Chamber EDC Senior Vice President Beth Johnson and Chamber Diplomats helped owners Marissa & Raymond Anden celebrate a ribbon cutting for the opening of **Nektar Juice Bar**, 5005 West 119th Street in **Hawthorne Plaza**. Nektar serves freshly made juice, smoothies, cold pressed juice cleanses, and handcrafted acai bowls. Download the app and skip the line (while earning rewards). For more information: (913) 227-2216 or www.nekterjuicebar.com.



City Council President Terry Happer Scheier, Councilmember Chris Newlin, Chamber President Tracey Osborne Oltjen and Chamber Diplomats helped owners Andy & Dana Kuntz and their team celebrate a ribbon cutting for the fifth **Andy's Frozen Custard** in the Kansas City region at 9535 Metcalf Avenue. In business for more than 30 years, Andy's is the largest privately-owned frozen custard-only quick service restaurant in the country with more than 78 stores across 13 states. For more information: (913) 318-3200 or www.eatandys.com.



Mix & Mingle

hosted by



RECENT EVENTS / SPONSOR SPOTLIGHT



hosted by



Sponsor Spotlight:



Foulston Siefkin LLP is proud to celebrate 100 years as a Kansas law firm and nearly 20 years in Overland Park. The firm's clients reflect the membership of the Chamber, including small and large businesses, hospitals, universities, municipalities and non-profit organizations. Whether launching a new venture, structuring a merger, managing employment risks or trying complex lawsuits, Foulston's attorneys help clients solve problems and reach goals.

The Overland Park office includes 34 employees and 20 attorneys. Foulston attorneys' practices include mergers and acquisitions, healthcare, commercial litigation, real estate, banking, and employment and labor. Foulston attorneys have earned national and regional recognition in legal rankings including the Best Lawyers in America, Chambers, and Benchmark Litigation.

Foulston attorneys give to more than 100 organizations, serve on boards and commit financial and volunteer resources to the InterUrban ArtHouse, Olathe Public Schools, Girl Scouts, the Sherwood Autism Center, the City Union Mission, the Overland Park Chamber, the Greater Kansas City Chamber, and the Olathe Chamber, and many legal organizations. Partner-in-charge Tony Rupp serves on the Overland Park Chamber Board of Directors and is chair of the Public Policy and Advocacy Committee. The firm believes in good corporate citizenship, investing in Overland Park, and the future of the Royals and the Chiefs. Foulston is #OPproud #JohnsonCountyProud!

For more information, contact Tony Rupp at trupp@foulston.com or (913) 498-2100 or visit www.foulston.com.



RideKC launches pilot program for app-based, ride-hailing service

A new transportation service is available in Johnson County that provides quick and convenient, point-to-point rides for the cost of a bus ride. RideKC is piloting a Micro Transit program that allows individuals to call for rides from an app or website and travel within a service area that includes Johnson County Community College, the Overland Park Farmers Market and Downtown Overland Park, Oak Park Mall, and Corporate Woods office park (see map at right). Rides are priced at a flat rate, costing \$1.50 per trip.

The new service duplicates the ease and immediate availability of ridesharing apps like Uber, but with the price certainty of traditional public transportation options like buses. Rides are available 6:00 a.m.-8:00 p.m., Monday-Saturday. The pilot program has a limited service area. Its boundaries are Shawnee Mission Parkway on the north, Metcalf Avenue on the east, 119th Street on the south, and Renner Avenue on the west. Micro Transit has expanded service on Saturdays, widening to State Line Road on the east.

The goal of the Micro Transit pilot is to determine whatof last-mile transportation options are viable and valued by residents. If successful, it could be expanded to more areas of the metro.

Rides can be accessed through the TransLoc app available in the App Store and the Google Play Store, online at www.ondemand.transloc.com or by calling (816) 512-5510.

RideKC now offers an app-based, ride-hailing service in Johnson County six days a week

Effective July 6, 2019

How do I use Micro Transit?
Summon a ride Monday-Saturday, between 6 a.m.-8 p.m. within the service area boundaries using the TransLoc app, online at ondemand.transloc.com or by calling 816.512.5510.

How do I pay?
Pay \$1.50 per ride through the app or with exact cash in the vehicle.

Download the TransLoc App
Scan the QR code or go to your app store and search "TransLoc."

Monday-Saturday Service Area (Dark Orange)
Additional Saturday-Only Service Area (Light Orange)



In a Learning@Lunch program co-hosted by **Kansas State University Olathe** last month, Overland Park Young Professionals learned about elevating their networking and relationship-building skills to further their careers in a presentation by Brett Horton, a professor of practice in hospitality management at K-State Olathe.

Enjoy 2 free rides with RideKC Micro Transit to / from the Overland Park Farmers' Market on August 3 when you use this coupon – [click here](#).

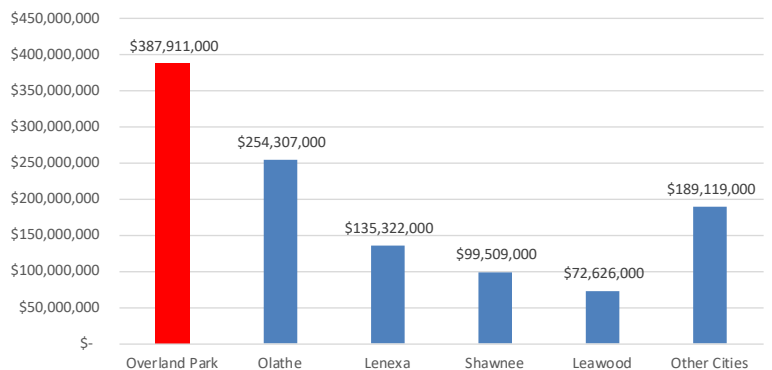
| Building Permits in Overland Park | | | | |
|-----------------------------------|----------------|------------------------|------------------|--------------|
| | New Commercial | Institutional, Schools | Other Commercial | Totals |
| June 2019 | 3 | 0 | 44 | 47 |
| Square Feet | 286,490 | 0 | 1,600 | 288,090 |
| Value | \$41,593,440 | \$0 | \$7,597,534 | \$49,190,974 |

– City of Overland Park

| Unemployment | | |
|-----------------------|-----------|-----------|
| | June 2019 | June 2018 |
| Overland Park | 2.8% | 3.0% |
| Johnson County | 2.7% | 3.1% |
| Kansas City Metro MSA | 3.1% | 3.5% |
| State of Kansas | 3.4% | 3.3% |

(These percentages are not seasonally adjusted)
– Kansas Labor Information Center (KLIC)

Overland Park Retail Sales April 2019



Thank you to our 2019 Sponsors!

Corporate Partners



Corporate Sponsors

[Affinis Corp](#)

[CommunityAmerica
Credit Union](#)

[First National Bank](#)

[Foulston Siefkin LLP](#)

[JE Dunn Construction Company](#)

[Johnson County
Community College](#)

[Kansas City Power & Light](#)

[Kansas Gas Service](#)

[Saint Luke's Health System](#)

[The University of Kansas
Edwards Campus](#)

Leadership Circle Sponsors

AdamsGabbert

Fortune Financial Advisors, LLC

To add your name to this list each month,
contact Tracey Osborne Oltjen
at (913) 491-3600 or
tosborne@opchamber.org.



9001 West 110th Street, Suite 150
Overland Park, Kansas 66210
(913) 491-3600 • www.opchamber.org

Member News & Events

The **Overland Park Convention Center** is hosting its annual Touch a Truck, 11:00 a.m.-4:00 p.m. on **August 11**. Kids of all ages can sit, stand and get behind the wheels of over 40 giant trucks and large vehicles

Sporting Kansas City is hosting a Chamber of Commerce Networking Night on **August 22** with pre-match networking, 5:30-7:00 p.m., and the match beginning at 8:30 p.m.

Menorah Medical Center has appointed Phil Buttell as its new CEO.

Thryv, Inc., is the new corporate name of the former DexYP, focusing on the company's mission to equip entrepreneurs to run their businesses smarter using modern, mobile tools.

Dr. Joe Sopcich announced plans to retire as president of **Johnson County Community College**, effective July 1, 2020, after a 27-year career at the college.

Bambou Salons & Spas is now the official hair salon for KCTV5.

TPP Certified Public Accountants, LLC, has hired Mike Dean as a compliance officer.

Baker University School of Nursing has partnered with Truman Medical Center to provide a tuition discount to the hospital's employees.

Denise Kruse, **AdamsGabbert**, has been appointed chairman of the Make-A-Wish Missouri & Kansas Governing Board.

Baker University received a \$1.25 million grant from the Greater Kansas City Community Foundation for biology programs.

MarksNelson LLC, recently closed offices for a day to allow all employees to volunteer at 13 Kansas City area charities.

St. Joseph Medical Center has received the Healthgrades 2019 Patient Safety Excellence Award and the American Heart Association/American Stroke Association's Get With The Guidelines Target: Stroke Honor Roll Elite Silver Plus Quality Achievement Award.

To submit member news, [click here](#).

To submit member events, [click here](#).