

UPCOMING EVENTS

Power Networking @ Lunch

When: Tuesday, Sept. 10;
11:30 a.m.-1 p.m.
Where: Hilton Palm Beach
Airport
Cost: \$45, members; \$50,
non-members

Dale Carnegie Seminar - Increase Your Influence with Storytelling

When: Wednesday, Sept. 11;
8:30-10 a.m.
Where: Chamber Boardroom
Cost: \$20, members (\$15 in
advance); \$30, non-members
(\$25 in advance)
Speaker: Christine Ramirez,
VP of Dale Carnegie Training,
Southeast Florida

Business Builder

When: Friday, Sept. 13 and
Thursday, Sept. 26;
8:30-9:45 a.m.
Where: Chamber Boardroom
Cost: Free

ATHENA Leadership Awards Luncheon

When: Friday, Sept. 20;
11:30 a.m.-1 p.m.
Where: Palm Beach County
Convention Center
Cost: \$90, members; \$110,
non-members

YPOP 411 - Headshot

Happy Hour
When: Wednesday, Sept. 25;
5:30-7:30 p.m.
Where: Venture X
Cost: Free for YPOP members;
\$15, non-YPOP members

Business After Hours

When: Thursday, Sept. 26;
5:30-7:30 p.m.
Where: Grease Burger Bar
Cost: \$20, members; \$30,
non-members

Digital Marketing Measurement Seminar

When: Wednesday, Oct. 2;
8:30-10 a.m.
Where: Chamber Boardroom
Cost: \$20, members (\$15 in
advance); \$30, non-members
(\$25 in advance)

TRUSTEE SPOTLIGHT

Michelle McGovern

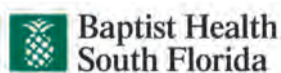


Michelle McGovern serves as Director of Government and Community Relations for

Baptist Health South Florida, South Florida's largest non-profit health care system.

Prior to joining Baptist Health South Florida in 2019, McGovern served as a U.S. Senate State Director and was an 18-year employee with the U.S. Senate.

Michelle is past president of The Forum Club of the Palm Beaches, past president of SunFest and a founding member of West Palm 100. She currently serves on the Board of Trustees for the Central Palm Beach Chamber of Commerce. A Florida native, McGovern is a graduate of Florida Atlantic University.



Howard E.N. (Chip) Wilson



Howard E.N. (Chip) Wilson is Director of Glenmede's Florida office. He also serves as a senior

Relationship Manager, partnering with multi-generational families on wealth planning, family wealth education and complex trusts, and most recently served as Executive Director of Relationship Management in Glenmede's Philadelphia headquarters. Prior to joining Glenmede, Wilson served with U.S. Trust, where he obtained numerous management roles, including President of the Florida Region, headquartered in Palm Beach. He earned a bachelor's degree in business from the University of Maryland and an MBA in finance from Loyola University. Wilson currently serves as a Trustee of the Chamber of Commerce of the Palm Beaches.

GLENMEDE

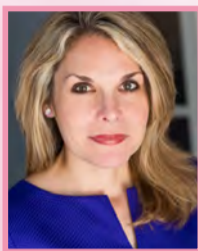
28th Annual ATHENA Leadership Awards Luncheon

FRIDAY, SEPTEMBER 20 | 11:30 AM - 1:00 PM

To register, please visit www.PalmBeaches.org



ATHENA LEADERSHIP AWARD FINALISTS



Sarah Alsofrom
GL Homes of Florida
Corporation



Kate Arrizza
South Florida Science
Center and Aquarium



Rita Barreto Craig
Top Tier Leadership



Sharon R. Bock Esq.
Clerk & Comptroller,
Palm Beach County



Dorritt M. Miller
Palm Beach County



Vicki Pugh
Palm Beach Atlantic
University

ATHENA YOUNG PROFESSIONAL LEADERSHIP AWARD FINALISTS



Noemi Coltea
MDS on Demand



Sarah Criser Elwell
Forum Club of
the Palm Beaches



Christina Lambert
City of West Palm
Beach Commission



Kat McGinley
Brown Distributing
Company



Christine Shaw
Florida Atlantic
University

ATHENA ORGANIZATIONAL LEADERSHIP AWARD FINALISTS



2019 ATHENA AWARDS FINALISTS ANNOUNCED



The Chamber is pleased to announce the 2019 ATHENA Leadership Awards finalists. This year, the Chamber received more than 60 nominations comprised of outstanding individuals and organizations throughout Palm Beach County. Please join us for the 28th Annual ATHENA Awards

Luncheon as we celebrate each finalist's achievements and honor recipients of our ATHENA Leadership Award, ATHENA Young Professional Leadership Award and ATHENA Organizational Leadership Award.

The luncheon, presented by Related, is Sept. 20 at the Palm Beach County Convention Center from 11:30 a.m.-1 p.m. To purchase an individual ticket or table, please visit www.palmbeaches.org.

For sponsorship information, please contact Michele Sacher at msacher@palmbeaches.org.



The Palm Beach Post
REAL NEWS STARTS HERE

Congresswoman Frankel conducts roundtable discussion

Congresswoman Lois Frankel met with executives from several local Chambers for a roundtable discussion on economic development in Palm Beach County. It was one in a series of meetings she has conducted with various groups around the County to gain insights into their concerns and experiences. Topics of discussion ranged from health care to cyber security risk.



West Palm Beach Police Department addresses Chamber members on safety protocol in an active shooter situation

The West Palm Beach Police Department – including new West Palm Beach Police Chief Frank Adderley, Assistant Police Chief Tony Spatara, Deputy Chief Richard Morris, and SWAT Team Leader Sergeant Randy Nash – hosted a Safety Response Seminar on Aug. 6. They partnered with the West Palm Beach Fire Department's Bianca Cummings and Bryan Lee, both first responders who educated the group on how bystanders can save lives in an active shooter situation by stopping bleeding using a tourniquet made with just a common belt and ink pen. Sergeant Nash emphasized how important it is for



organizations to be proactive in their safety awareness conversations resulting in a specific and concrete action plan that includes ongoing education for all employees and empowering them to report any suspicious activity. Geoff Sluggatt attended the event and said, "The Active

Shooter Seminar provided invaluable information on what employers need to do to protect their employees and customers. Clearly, we as business owners must be diligent and prepared. I commend Chief Adderley and the officers of the West Palm Beach Police Department for

providing this informative program and assisting local businesses with active shooter preparedness in the unfortunate case of an event."

Both the Palm Beach County police and EMT departments offer ongoing education programs and resources for local businesses to be prepared, encouraging civilians to reach out to them to learn more.

For more information on seminars and events, please contact Michele Sacher at msacher@palmbeaches.org.



WEST PALM BEACH



From left: Gary Vonk, Keiser University; Kimberly Lea, Keiser University; Greg Rice, Hulett Environmental Services; Chamber Chair Evelyn Hopkins; Deputy Superintendent Keith Oswald; and James Gavrilos, Education Foundation of Palm Beach County.

Back to School Breakfast

On Tuesday, Aug. 20, Deputy Superintendent for the School District of Palm Beach County Keith Oswald, delivered the Annual Back-to-School Breakfast address, presented by Keiser University and Hulett Environmental Services. Oswald reported that The Palm Beach County School District is now the 10th largest district in the nation, consisting of 179 schools with a total of 176,000 students and an annual budget of \$3.5 billion. He also shared that 66% of the schools in the district have achieved an "A" or "B" rating and that they had a graduation rate of 91.7% percent for the 2018-2019 school year.

Oswald attributes the high graduation rate to teacher's dedication and leading their new program called "Ready. Set. GOALS!" that students start in kindergarten, having 100% participation from all teachers, staff, administration and even their school board

members. Also, they have more than 320 choice, career and technical education programs from which students can choose to lead them toward various career paths.

To enhance school safety, they now have 230 school police officers and utilize phone apps to support their "See it - Tell it" program to give everyone, including parents, empowerment to protect their schools and events. A special thanks to all attendees and the Chamber's Women in Business Committee who donated school supplies to the Red Apple Supplies Drive coordinated by The Education Foundation of Palm Beach County, donating \$6,000 for a new science program at Pleasant City Elementary School.

For more information on sponsorship and events, please contact Michele Sacher at msacher@palmbeaches.org.

SPECIAL THANKS TO OUR SPONSORS

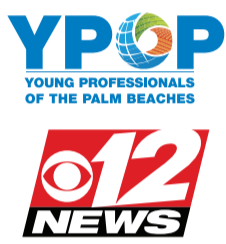


Young Professionals of the Palm Beaches (YPOP) get 'behind the scenes' tour at CBS Channel 12 News Station

CBS Channel 12, part of Sinclair Broadcast Group, hosted YPOP Members on Aug. 8 for a "behind the scenes tour" of their newly renovated TV station. Travis Harmony, digital sales manager, explained how the station now offers 360 Digital Marketing services for local and small businesses to analyze their client base, and how those businesses can grow through the use of social media and

web-based platforms.

For more information on YPOP, please contact Michele Sacher at msacher@palmbeaches.org.



JOIN NOW TO APPEAR IN '2020 GUIDE TO THE PALM BEACHES'



Looking to attract business? Increase your visibility and your sales by appearing in the Chamber's full-color, award-winning Guide to the Palm Beaches, which serves as a buying guide for products and services by Chamber members as well as residents, tourists and visitors to Palm Beach County.

The Chamber prints 10,000 copies of the Guide, which will debut at the Mayor's State of the City Address on Jan. 21, when 1,000 area businessmen and women will leave with a copy hot off the press. Print copies will also be available at The Chamber's office. An online

version will be available at www.palmbeaches.org.

Each member of the Chamber receives two free listings - one alphabetical and one by business category. Deadline to join is Sept. 30 and you must be a Chamber member to be included. For more information, contact Kelly Fanelli, membership director, at kfanelli@palmbeaches.org or call 561-257-0289.

Ruth's Chris Steak House hosts August Business After Hours

Ruth's Chris Steak House in West Palm Beach's Rosemary Square provided first class service and delicious food and wine to more than 75 local professionals on Aug. 14 at the Chamber's monthly Business After Hours networking event. They showcased their private event food offerings, with generous quantities of rosemary shrimp, beef tenderloin with honey soy glaze, chicken with barbecue butter sauce skewers and international cheese pairings with wines.

Sales manager Jennifer Anciano said that the restaurant can host private events for six to 80 people with uncompromising



quality of service and food because of their commitment to excellence and staff training programs across service and food pairings with wine. The

menu changes seasonally to offer new items for guests.

There was high energy at this popular event that guests look forward to every August at Ruth's Chris, which has been SOLD OUT the last three years.

For more information on sponsorships and events, please contact Michele Sacher at msacher@palmbeaches.org.

Experience West Palm Beach like never before

APPLY FOR CLASS 2020 OF LEADERSHIP WEST PALM BEACH

The Chamber is currently accepting applications for Class 2020 of Leadership West Palm Beach, which exposes participants to a variety of aspects of the community, including government; health and human services; education; neighborhoods, arts, culture & festivals; and economic development. Leadership West Palm Beach provides information to class



participants to generate leaders with a well-rounded knowledge base to assist in future planning and decision-making for the betterment of West Palm Beach. Submit your application online at palmbeaches.org. For



more information or to inquire about sponsorship opportunities, please contact Sandy Pullens at spullens@palmbeaches.org.

Cohen

COHEN BROTHERS REALTY CORPORATION OF FLORIDA



FIFTH THIRD BANK

KPA PROMOTIONS & AWARDS

REIKENIS & ASSOCIATES, LLC

Baptist Health South Florida

BDO

brightline

NEW MEMBERS

Aflac
Christine Vegso
Benefit Consultant
1006 Raintree Lane
Palm Beach Gardens, FL 33410
aflac.com
920-213-8829
INSURANCE - SUPPLEMENTAL

Baptist Health South Florida
Michelle McGovern
Director of Government & Community Relations
10520 Forest Hill Blvd.
Wellington, FL 33414
HOSPITALS

Baquerio Translations Inc.
Juan Baquerio, Director
5221 Rising Comet Lane
Lake Worth, FL 33463
baqueriotranslations.com
TRANSLATORS & INTERPRETERS

Bridging Communities, Inc.
Anozaire Orlus
Founder/President/Program Coordinator
2054 Vista Parkway, Suite 202
West Palm Beach, FL 33411
bcwpb.org
561-216-1357
EDUCATIONAL SERVICES & CONSULTANTS

Cary Stamp & Co.
Patrick Thompson, CEO
110 Bridge Road
Tequesta, FL 33469
carystamp.com
561-471-7700
FINANCIAL ADVISORS, PLANNERS & CONSULTANTS

Charlotte Pelton & Associates, Inc.
Michaela Kennedy
Vice President, Fundraising & Marketing
4440 PGA Blvd.
Palm Beach Gardens, FL 33410
charlottepelton.com
561-626-6557
MARKETING CONSULTANTS

Compass Self Storage
Alexis Marino
Corporate
2021 S. Military Trail
West Palm Beach, FL 33415
compassselfstorage.com
561-969-9323
STORAGE - HOUSEHOLD & COMMERCIAL

Cooper Construction
Management & Consulting
Veronica Cooper, Vice President
354 Hiatt Drive, Suite 140
Palm Beach Gardens, FL 33418
coopercm.com
561-841-6150
CONSTRUCTION MANAGEMENT - GENERAL CONTRACTOR

Coral Shores Behavioral Health
Angel Piper, CEO
5995 S.E. Community Drive
Stuart, FL 34997
coralshoresbehavioral.com
772-403-4000
MENTAL HEALTH SERVICES

Faryal Farooqi, M.D.
Faryal Farooqi, Physician
499 Evernia Ave., #327

West Palm Beach, FL 33401
973-818-2449
PHYSICIANS & SURGEONS - REGENERATIVE MEDICINE

Federal Prison Time Consulting
Dan Wise, Owner
860 U.S. 1, Suite 203F
North Palm Beach, FL 33408
federalprisonstime.com
509-434-4695
CONSULTANTS

For The Children Inc.
Yves Saint-Hillien
Program & Fund Development Director
1718 S. Douglas St.
Lake Worth, FL 33460
forthechildrenfirst.org
561-493-1190
NON-PROFIT ORGANIZATION

Group One Mortgage
Trevor Shishkowsky
Loan Officer
900 E. Indiantown Road, Suite 110
Jupiter, FL 33477
561-412-9022
MORTGAGES & BUSINESS FINANCIAL SOLUTIONS

HealthMax Center
Frank Ambrosio
VP of Chiropractic and Development
4360 Northlake Blvd., Suite 114
Palm Beach Gardens, FL 33410
healthmaxcenter.com
561-612-8001
HEALTH & WELLNESS

Illustrated Properties LLC
Liz Armstrong, Manager
1810 S. Dixie Highway
West Palm Beach, FL 33401
ipre.com
561-588-2002
REAL ESTATE - RESIDENTIAL

KO-MAR Productions, Inc.
Amanda Price, Senior Producer
1100 Banyan Blvd.
West Palm Beach, FL 33401
ko-mar.com
561-671-3745
TV & VIDEO PRODUCTION SERVICES

L&D Evolution, LLC
Louis Veneziano, Owner/CEO
4474 Danielson Drive
Lake Worth, FL 33467
LDevolution.com
561-800-3006
MANAGEMENT & LEADERSHIP DEVELOPMENT

Lynn University
Steve Pruitt
Director of Graduate & Online Admission
3601 N. Military Trail
Boca Raton, FL 33431
lynn.edu
561-237-7900
SCHOOLS - ACADEMIC - COLLEGE & UNIVERSITIES

Markarian & Hayes
Dave Markarian, Attorney & Co-Owner
2925 PGA Blvd., Suite 204
Palm Beach Gardens, FL 33418
forbusinessandlife.com

561-626-4700
LEGAL SERVICES & PLANS

NBP Insurance Services
Nadine Perez, Owner
813 Salem Lane
Lake Worth, FL 33467
NBPinsuranceFL.com
561-594-9758
INSURANCE & FINANCIAL SERVICES

Off Lease Only Inc.
Ejola Cook, VP, CAO; General Counsel
1200 S. Congress Ave.
Palm Springs, FL 33406
OffLeaseOnly.com
561-222-2277
AUTOMOBILE DEALERS - NEW/USED/SERVICE

Palm Beach Modern & Contemporary
Pamela Cohen
VP, Marketing, Sponsorships & VIP Relations
82 N.E. 29th St.
Miami, FL 33137
artpbfair.com
561-322-5611
ARTS & ENTERTAINMENT

ProSource of Palm Beach
Michael Taylor, Manager
7479 Central Industrial Drive
West Palm Beach, FL 33404
prosourceofpalmbeach.com
561-848-2221
FLOOR MATERIALS

Randstad
Kelly Eliason, Staffing Manager

400 S. Australian Ave., Suite 100
West Palm Beach, FL 33401
randstadstaffing.com
561-833-6451
STAFFING

Red Crab Juicy Seafood
Tracy Chen, Manager
6177 Jog Road, Suite D01-04
Lake Worth, FL 33463
redcrabseafood.com
361-683-8638
RESTAURANTS

Robert Allen Law
Nick Zeher, Lawyer
249 Royal Palm Way,
Suite 301
Palm Beach, FL 33480
robertallenlaw.com
305-372-3300
ATTORNEYS

Roth Staffing Companies, L.P. dba Ultimate Staffing Services
Shariltha Reed
Business Solutions Manager
1555 Palm Beach Lakes Blvd., Suite 750
West Palm Beach, FL 33401
UltimateStaffing.com
561-687-8909
STAFFING & RECRUITING

SMP Residential Redevelopers
Shawn Parrigo, President
1424 39th St.
West Palm Beach, FL 33407
561-441-1158
REAL ESTATE - INVESTMENTS

The Glenmede Trust Company
Howard "Chip" Wilson
Director of Florida Region
222 Lakeview Ave., Suite 1160
West Palm Beach, FL 33401
Glenmede.com
561-571-4901
WEALTH MANAGEMENT

Thrivent Financial
Shanell Foster, Financial Advisor
319 Clematis St., Suite 213
West Palm Beach, FL 33401
connect.thrivent.com/Shanell-Foster
561-969-8879
FINANCIAL ADVISORS, PLANNERS & CONSULTANTS

TKS Legal Nurse Consulting, LLC
Tammy Sirmans, President
1722 Banyan Creek Court
Bokston Beach, FL 33436
tklegalnurseconsultingllc.com
561-388-0795
CONSULTANTS - MEDICAL LEGAL

YWCA of Palm Beach County
Kathleen Spears, Executive Director
1016 N. Dixie Highway
West Palm Beach, FL 33401
ywcabpc.org
561-640-0050
NON-PROFIT ORGANIZATION