



FOCUS

THE MONTHLY BUSINESS NEWS MAGAZINE OF THE
LANSING REGIONAL CHAMBER OF COMMERCE

APRIL 2022

GLOBAL SUPPLY CHAIN

CONNECTING GREATER LANSING TO THE WORLD

IN THIS ISSUE

MEET BRIAN DANIELS: LANSING'S NEWEST CITY COUNCIL MEMBER

ORIGAMI CELEBRATES 25 YEARS OF SERVING THE COMMUNITY

NATION'S FIRST AUTISM MUSEUM OPENS IN THE MERIDIAN MALL

2022 Board of Directors

Officers

Board Chair

Mike Zamia / Niowave

Past Chair

Wendy Hamilton / TechSmith

Chair-Elect

Matt Resch / Resch Strategies

Legal Counsel

Patricia Scott / Foster, Swift, Collins & Smith, P.C.

Treasurer

Luke Terry / Rehmann

President

Tim Daman / Lansing Regional Chamber of Commerce

Division Directors

Marketing and Communications

Lisa O'Connor / Publicom

Government Relations

Amy Scoby / Christman Company

Member Services

Michelle Massey / TechSmith

Regional Initiatives

Kirk Ray / McLaren Greater Lansing

At-Large

Tina Brumley / Auto-Owners Insurance Co.

April Clobes / MSUFCU

Jim Farrell / Dart

Roger Graff / Farm Bureau Insurance Co.

Glenn Granger / Granger Construction

Keith Granger / Granger

David Lewis / AT&T

Darci Marcum / General Motors

Van Martin / Martin Commercial Properties

Jeff Metts / Dowding Industries

Ken Misiewicz / Pleune Service Company

Steve Quinlan / Neogen

Joe Ruth / Sparrow

Lisa Webb Sharpe / Peckham

Lisa Ellen Smith / InVerve Marketing

Todd Surline / Hiring Solutions

Dr. Kathleen Wilbur / Michigan State University

Kevin Zielke / AF Group

David Zyble / Jackson National Life

Board Partnerships

LEAP, Inc.

Bob Trezise / LEAP, Inc.

Lansing 5:01

Chris Sell / Michigan State University

ATHENA WIN

Jenn Sturdy / PNC

Black Business Alliance of Greater Lansing

Dr. Alane Laws-Barker / Sparrow

Greater Lansing Hispanic Chamber of Commerce

Chaz Carrillo / David Chapman Insurance Agency

FOCUS

Editor

Ashley Sandborn

Feature Writer

Ross Woodstock

Design

Tandem Studios

Cover Photography

Courtesy of Meijer



JOIN THE LEADERSHIP CIRCLE

Leadership Circle investors are proven business and community leaders. We value their commitment and applaud their efforts to strengthen our region with their leadership and appreciate the important role they play in advancing our organization.

Stay Connected. **Stay Social.**

facebook.com/LansingChamber

twitter.com/LansingChamber

[Lansing Regional Chamber of Commerce](https://www.youtube.com/LansingRegionalChamber)

[@LansingRegionalChamber](https://www.instagram.com/LansingRegionalChamber)

[Lansing Regional Chamber of Commerce](https://www.linkedin.com/company/LansingRegionalChamber)



LANSING REGIONAL CHAMBER

CONTENTS



Meijer

on the cover

GLOBAL SUPPLY CHAIN: CONNECTING GREATER LANSING TO THE WORLD

MEMBER NEWS

- 08** Origami Celebrates 25 Years of Serving the Community
- 09** Ukraine War and Greater Lansing

#LOVELANSING

- 10** Greater Lansing CVB Reports Rebound of Local Hospitality Industry & Celebrates 10 Long-Standing Businesses

CHAMBER NEWS

- 12** Lansing Regional Chamber Annual Dinner Set for June 16 at Eagle Eye Banquet Center

DIVERSITY AND INCLUSION

- 13** Lansing Man Opens Nation's First Autism History Museum
- 13** April is Autism Acceptance Month

FOCUS ON TALENT

- 14** CTE Work-Based Learning Experience Leads Student to Success After High School

ADVOCACY

- 22** Lansing Regional Chamber Commends Congressional Delegation for Securing Funds for Regional Priorities
- 23** Meet Brian Daniels: Lansing Newest City Council Member
- 24** CAPCOG Urges Lawmakers to Invest Federal Relief Dollars in Key Regional Projects

monthly features

- 04** Message from the Chamber
- 05** Calendar of Events
- 06** Thank You Renewing Members
- 06** Welcome New Members
- 07** Chamber Milestones
- 11** Chamber in Action
- 25** Members on the Move

Greater Lansing is Ideally Suited for Supply Chain Growth

The ongoing supply chain disruptions have had an impact on all of us as consumers and to an even greater extent, for our business operations and economy. As we note in this month's cover story, recent supply chain disruptions have also had a positive twist, with the growing realization of the growth opportunities for communities that successfully develop the supply chain sector as part of their financial portfolio.

The Global Supply Chain Management Market estimates the size of the supply chain sector nationally is expected to reach \$42.46 billion by 2027, rising at a market growth of 10.4%. Supply chain industries contribute an estimated \$427 million to the local economy in the greater Lansing area. Michigan State University is also home to the No.1 rated supply chain management program in the country, which provides our region with research, education, and expertise to support supply chain growth.

Greater Lansing is ideally suited for growth in the supply chain sector, most notably because of our location and infrastructure. I-69 gives us access between Canada and Mexico, which is critically important for international trade. U.S. 127 gets us into population bases in northern Michigan and I-96 connects us to the Detroit/Windsor border crossing, the busiest in North America.

Our community also sees the benefits of investments we have chosen to make in the Capital Region International Airport. Port Lansing and the Foreign Trade Zone provide opportunities for future growth. UPS, a global transportation company, has decided to make Lansing the hub of its Michigan air operations and distribution system. As a region, we need to ask ourselves, how do we grow investment in this sector?

We should also consider what Meijer has done with its regional distribution center in Delta Township, which tells the story of what the supply chain sector can mean for our economy. Similarly, we can look at Amazon, which is investing in a one-million-square-foot fulfillment center located in Delta Township. In addition, our strong manufacturing sector represents significant growth opportunities, as evidenced by General Motors' (GM) decision to invest \$3 billion in the region for construction of the electric vehicle battery plant and further growth at GMs existing assembly plants in Lansing.

The region also scored a significant win when global healthcare supply chain company McKesson chose to relocate its pharmaceutical distribution center in Delhi Township, which points to the potential for regional growth in the medical technology sector. The supply chain sector has been a bit under the radar in our region to a certain extent. The combination of our central location and infrastructure to support supply chain growth and the successful track record we have established should serve to encourage a concerted effort to more fully develop jobs and investment in this critically important economic sector. ●



TIM DAMAN
PRESIDENT AND CEO
LANSING REGIONAL
CHAMBER OF COMMERCE



Greater Lansing is ideally suited for growth in the supply chain sector, most notably because of our location and infrastructure. I-69 gives us access between Canada and Mexico, which is critically important for international trade. U.S. 127 gets us into population bases in northern Michigan and I-96 connects us to the Detroit/Windsor border crossing, which is the busiest in North America.

MICHIGAN PREMIER EVENTS
 Association, Corporate & Government
 Events Management Company

CONTACT US TODAY!

www.MichiganPremierEvents.com

April 2022

4/12 LANSING ECONOMIC CLUB
Tuesday, April 12 from 11:30 a.m. to 1:30 p.m.
Kellogg Hotel & Conference Center | 219 S. Harrison Road, East Lansing

Sponsored by Foster Swift and Foresight Group, the April Economic Club will feature John Smoltz, a Waverly High School graduate and former baseball pitcher who played 22 seasons in Major League Baseball from 1988 to 2009. Smoltz will discuss his time in Lansing, career path, and the importance of getting out of your comfort zone and overcoming the fear of failure.

Cost: Complimentary for Lansing Economic Club members; \$55 for Lansing Regional Chamber of Commerce (LRCC) members; \$75 for future LRCC members; and \$425 for table of eight.

4/12 APRIL MEMBER MIXER
Tuesday, April 12 from 4:30 to 6:30 p.m.
Location: The Hidden Gem Event Venue | 4230 Charlar Drive, Holt

You are invited to enjoy networking with other LRCC members and complimentary food & beverages.

Cost: Complimentary for LRCC members.

4/27 BUSINESS EDUCATION SERIES
Wednesday, April 27 from 10 to 11:30 a.m.
LRCC: Insurance Capital Boardroom | 500 E. Michigan Ave., Suite 200; Lansing, MI

Jen Estill, principal, Redhead Creative Consultancy, will help attendees explore how brand strategy and marketing can be the strongest tools for attracting and retaining talent and understand that employees are a target market, too. Understanding target markets is the key to great sales and growth. Estill will also discuss leveraging and promoting the best parts of your company culture and strengthening collaboration between marketing and HR.

Cost: Complimentary for LRCC members and \$25 for future LRCC members.

A Leadership Book with a **TWIST**

Author: Ross Woodstock
 Executive Coach and Leadership Consultant
 Available on Amazon

Virtual Business Roundtables

Virtual roundtables allow community and government leaders an opportunity to share what is going on in the community and determine ways to advise the tri-county region.

Delta Township - Eaton County Wednesday, April 6 from 9 to 10 a.m.	Lansing - Delhi Township Wednesday, April 13 from 9 to 10 a.m.	East Lansing - Meridian Township Wednesday, April 20 from 9 to 10 a.m.
--	--	--

The LRCC hosts numerous events monthly, from Member Mixers to Lansing Economic Club programs. The events and programming provide valuable content and information and give members unique opportunities to connect and network.

The LRCC encourages members to check their email, follow LRCC social media channels, and visit the [LRCC website](#) for the most updated information on upcoming educational offerings and networking opportunities.

Registration is available on the LRCC website.

Thank You Renewing Members

Absolute Environmental Solutions	Colliers International	L.D. Clark Companies	Playmakers
Accident Fund Holdings (AF Group)	Columbia Sussex Corp	Lighthouse Party Bus & Limo	Publicom
Air Lift Company	Community Mental Health of Clinton, Eaton & Ingham Counties	Liskey's Auto & Truck Service	Rehmann
ALDI	Cron Management, LLC	Los Tres Amigos	Renee Dwyer (Keller Williams - Lansing)
American Cancer Society	DDCW LLC	Love's Travel Stops & Country Stores	Resch Strategies
Applied Imaging	Delhi Charter Township	MAYOTTEgroup Architects	River Caddis Development
Arts Council of Greater Lansing	Delta Township	McLaren Greater Lansing	Shinberg Insurance Agency, Inc.
ASK	Douglas Steel Fabricating Corporation	MDK Group	Sohn Linen Service
Bergmann Associates, Inc.	emPOWER Lansing	MessageMakers	SpringHill Suites by Marriott
Blue Cross Blue Shield of Michigan	Enerco Corporation	Metro Place Apartments (KMG Prestige)	Tandem Studios
Builders Hardware Co	FAITH Catholic	Michigan Chamber of Commerce	Triterra
Byrum Fisk	Fifth Third Bank	Michigan Osteopathic Association	Unique Movers & Solutions LLC
Candlewood Suites Lansing	Gorsline-Runciman Funeral Homes	Mid-Michigan Mortuary Transportation Inc	Value Engineering, LLC
Capitol View Apartments	Granger Group	Mission Point Resort, Mackinac Island	Volaris Lansing
Care Free Medical, Inc.	Great Lakes State Agency	Morse Moving & Storage	
CBRE, Inc.	Harrison Roadhouse	Northwestern Mutual of East Lansing	
Chelsea Lumber Company	The Hidden Gem Event Venue	Orthopaedic Rehab Specialists, P.C.	
Chick-fil-A Lansing	Hyatt Place Lansing - East		
Cinnaire Corporation	K&P McClure Leasing Inc		
Cohl, Stoker & Toskey, P.C.	Kincaid Building Group, Inc.		
Coldwell Banker Hubbell BriarWood	Kolt Communications, Inc.		

Welcome New Members

Black Wall Street of Lansing

(517) 319-7376

www.blackwallstreetoflansing.com

1600 S. Cedar St.
Lansing, MI 48910

Boot Barn

(517) 246-0044

www.bootbarn.com

430 N. Marketplace Blvd.
Lansing, MI 48917

Buddy's Pizza

(517) 273-8900

www.buddypizza.com

5924 W. Saginaw Hwy., Suite B
Lansing, MI 48917

Castle Financial Partners

(517) 331-8331

www.castlefinancialpartners.com

2450 Delhi Commerce Drive, Suite 10
Holt, MI 48842

PAE Plumbing LLC

(517) 331-7442

www.paeplumbingllc.com

119 S Cochran Ave.
Charlotte, MI 48813

Red Cedar Lodge

(859) 200-2736

www.traditionsmgmt.net

250 Clippert St.
East Lansing, MI 48912

Chamber Milestones

**Berkshire Hathaway HomeServices
Tomie Raines Realtors**

45 Years

**Fraser Trebilcock Davis &
Dunlap P.C.**

45 Years

Boys & Girls Club of Lansing

35 Years

Extend Your Reach

35 Years

Flooring America – Carpet Studio

15 Years

Matrix Consulting Engineers, Inc.

15 Years

Meijer Inc.

15 Years

Nyaka AIDS Orphans Project, Inc.

10 Years

**Guy Hurley Insurance &
Surety Services**

5 Years

H&R Electrical Contractors

5 Years

**Inspired Home Real Estate &
Staging**

5 Years

New Leaf Landscaping Company

5 Years

Robert Half International

5 Years

We'd like to offer a special salute to these great organizations who reached milestone anniversaries as Lansing Regional Chamber of Commerce (LRCC) members this month. Thank you for your continued support throughout the years!

Info Hub

LRCC members have unparalleled access to company and staff profiles on the LRCC website. To access and update this information at any point, visit lansingchamber.org and enter your username and password. If you have not yet signed into the site, please follow the simple password reset instructions.

Call (517) 487-6340 with any questions.

NOW OPEN

**NEW ADDRESS.
NEW HOSPITAL. NEW ER.**

McLaren
GREATER LANSING

2900 Collins Road
Lansing, MI 48910
(517) 975-6000
mclaren.org/lansing



Origami Celebrates 25 Years of Serving the Community

This April marks a significant milestone for Origami Rehabilitation – they will be celebrating 25 years of serving the community and transforming the lives of 2,500+ individuals and their families.

Origami, a 501(c)(3) nonprofit organization, was born out of a unique and innovative partnership between Peckham, Inc., and Michigan State University's College of Osteopathic Medicine to meet a great need in the community and provide exceptional rehabilitation in the Mid-Michigan area.

On April 7, 1997, Origami opened a residential program specializing in serving adults with traumatic brain injury. Over the last two decades, it has gradually expanded to become a unique multi-dimensional continuum of residential and outpatient care serving children, adolescents, and adults with neurological, developmental, mental health, and orthopedic conditions. Origami has strategically diversified its population served and maximized access to care for individuals with diagnoses such as cerebral palsy, movement disorders, multiple sclerosis, neurological deficits stemming from aneurysm, seizures, and/or tumor, neuromuscular disease, orthopedic injuries, Parkinson's disease, post-concussion syndrome, spinal cord injury, stroke, mental health conditions, speech, language, and oral motor conditions, traumatic brain injury, and more.

The name Origami is based on the ancient art of paper folding. Like the detailed architecture of paper folding, Origami's specialized care and support bring shape and dimension back into the lives of the individuals they serve. Origami supports individuals and their families through each intricate detail and fold of the recovery journey to help them gain greater independence.

Origami has reached some distinct milestones throughout its 25 years. In 1997, Origami obtained its first accreditation from the Commission on Accreditation of Rehabilitation Facilities (CARF) and diligently maintained this commitment to quality. In 2000, its first full-time occupational therapist, Tammy Hannah was hired, who would go on to serve as its President & CEO. In 2016, Origami completed a significant expansion on its Mason campus, including a remodeled therapy clinic with an expanded gym, additional staff offices, an assisted living home, and more. And in 2021, it underwent a name change from Origami Brain Injury Rehabilitation Center to Origami Rehabilitation and opened its first satellite outpatient clinic in Lansing.

"It's surreal to think we've been serving the Mid-Michigan area and beyond for 25 years now. Although many things have changed and advanced at Origami over the years, one symbol has remained, the Origami crane. The crane symbolizes a long, productive life, and helping our clients achieve that will always be at the core of what we do. I am filled with gratitude as we celebrate this significant milestone with our clients, team, and the community," said Hannah, as she reflected on an incredible 25 years of serving the community.

Origami Rehabilitation is a 501(c)(3) nonprofit organization. Origami provides comprehensive rehabilitation for children, adolescents, and adults with neurological, developmental, mental health, and orthopedic conditions through their residential and outpatient programs. With their compassionate and innovative services, Origami creates opportunities and transforms lives.

To learn more about the programs and services available at Origami, or submit a referral, call (517) 455-0264 or visit www.OrigamiRehab.org.



CONNECTED

We are all accountable to one another.
We build teams that share the joys of struggle and success.

LET'S TELL YOUR STORY.

Storytelling Creative Services MessageMakers.com

Ukraine War and Greater Lansing

By: Joseph Hess, former president of the Greater Lansing United Nations Association

Russia's violation of its membership commitments to the United Nations (UN)



UNITED NATIONS ASSOCIATION OF THE UNITED STATES OF AMERICA
Greater Lansing Chapter

has triggered ever-widening economic and humanitarian repercussions worldwide. During a UN General Assembly special session in March, 141 nations voted to condemn Russia's violation and join the global campaign to stop the invasion and comply with the principles of the UN Charter.


The Greater Lansing community is already feeling the effects in the form of higher gasoline prices, increasing inflation, restrictions, costs of international travel, among others.

Multiple UN agencies are assisting millions of Ukrainians in escaping the ravages of war. European and other countries are providing them with food, shelter, clothing, etc. The majority hope to return to help rebuild a free, democratic Ukraine. If Russia succeeds, millions will decide to resettle elsewhere, including in the U.S., Michigan, and Greater Lansing. Many Ukrainians are highly educated and could quickly become contributors to the local economy. Local agencies and businesses will welcome them.

One of the overriding issues that UN member nations will need to address is how to more effectively deal with members whose leaders violate the commitments made when they became UN members. The current structure with five permanent members of the Security Council (China, France, Russia, United Kingdom and U.S.), each with veto power, was a pragmatic compromise made in 1945 to initiate a global organization dedicated to peaceful resolution of international conflicts.


As UN membership has grown from 51 to 193 nations, the glaring weakness of veto power has become increasingly unacceptable. During the 73rd session of the UN General Assembly in 2018, a motion was passed to "remove veto power and expand the Security Council to include new permanent seats." Russia's illegal invasion of Ukraine will increase the urgency of addressing Security Council reforms.

No nation or individual will escape the negative consequences of Russia's most recent violation. They will be multiplied if nuclear or biologic weapons are used to prop up a faltering Ukraine invasion. The role of the UN to bring all nations together to address complex global issues, like refugee support, resettlement, and climate change, has never been more critical. ●



origami
REHABILITATION

ORIGAMI PEDIATRICS



LOCATIONS IN LANSING AND MASON

Serving newborns to adolescents with neurological disorders, orthopedic injuries, vision diagnoses, mental health needs, speech and oral motor conditions, and more.

OrigamiRehab.org | 517-336-6060



Greater Lansing CVB Reports Rebound of Local Hospitality Industry & Celebrates 10 Long-Standing Businesses

The Greater Lansing Convention and Visitors Bureau (GLCVB) held its annual meeting on March 1 and shared the state of the hospitality industry and 2021 local visitor economic impact. It also celebrated a local author as the CTA Star of the Year and recognized 10 area tourism-related businesses for milestone anniversaries. Many have been in business for 50, 85 and 100 years.

Julie Pingston, president and CEO, GLCVB, reflects, “coming out of the pandemic’s crisis mode of 2020, we looked to 2021 to be a transformational year for the region’s hospitality industry. A primary indicator of the vibrancy of the industry is hotel occupancy and ADR and we were pleased to see steady growth in both.”

The year ended with a hotel occupancy rate of 49%, better than the 2020 rate of 40%, but still far off pace from the region’s highest occupancy of 65% recorded in 2019. The region’s hotel average daily rate also continued to rebound, ending 2021 at \$92.59 compared to \$82.28 in 2020.

During the annual meeting, the GLCVB recognized many of the region’s 400 Certified Tourism Ambassadors (CTAs) dedicated to making every visitor experience a positive one. Those acknowledged included 34 CTAs that have served the community for five years and 52 CTAs for 10 years. Amy Piper, CTA local author of 100 Things to Do in Lansing Before You Die, was celebrated as the CTA Star of the Year.

The GLCVB acknowledged the anniversary milestones achieved by the following local attractions and businesses:

- Harris Nature Center – 25 years (2022)
- Michigan Princess Riverboat – 30 years (2021)
- Harrison Roadhouse – 40 years (2021)
- Rick’s American Café – 40 years (2021)
- Roadhouse Pub – 30 years (2021)
- Nuthouse Sports Grill – 25 years (2021)

- Impression 5 Science Center – 50 years (2022)
- Quality Dairy – 85 years (2021)
- The Peanut Shop – 85 years (2022)
- Harry’s Place – 100 years (2022)

“As the industry continues to make strides toward recovery, I remain hopeful and believe in the resiliency of this community. The ten businesses we celebrated today are living proof of that,” said Pingston. “As we look forward to 2022, our focus will be to enact the strategic recovery plan and serve as a resource to event planning clients, while continuing to help our local hospitality partners thrive. We remain optimistic that we are well prepared to meet any new challenges we might encounter as the industry rebounds.”

Find the full 2021 GLCVB annual report and additional details at www.lansing.org/about-us/annual-report-and-meeting. ●

Chamber Events Your Connection to Professional Development and Networking Success

From professional development to networking, the Lansing Regional Chamber of Commerce hosts events to fit every need.

A full list of events is located on the Chamber Calendar on the LRCC website.





March 5 was a sweet day for Nikki Thompson-Frazier and her beautiful family. They celebrated the grand opening of **Sweet Encounter Bakery & Café** surrounded by sunshine, friends, family, and hungry customers. Eight months after winning the first-ever Lansing Built to Last competition, Nikki is again making history by moving into a 2,500-square-foot, first-floor space in the Knapp's Centre. Her space, located at 300 S. Washington Square, includes a dine-in seating area with at least two dozen seats and a 500-square-foot classroom space where cooking and baking classes for every age group will be offered. The bakery and cafe breakfast and lunch menu will include quiche, scones, sandwiches, soups and salads, and of course, coffee. Visit www.sweetencounterbakery.com for more information.



On March 3, the Lansing Regional Chamber of Commerce helped celebrate the grand opening of **Tommy's Express Car Wash** in Lansing. Tommy's Express Car Wash is a next-generation, high-efficiency, national car wash franchise that provides faster, safer, and more sophisticated car washing with affordable pricing and membership packages. Each highly recognizable location is equipped with a dual belt conveyor system, soft cloth brushes, tire shine service, body wax, and a license plate recognition system for TommyClub members. Self-service interior vacuuming is available on-site. Tommy's uses recycled water, making them not only affordable but environmentally conscious. Learn more at www.tommys-express.com.



More than 75 business and community leaders packed in the March Member Mixer held at the downtown Lansing Regional Chamber office in the Stadium District building. A special thanks to our partner and host, Ellison Brewery, for providing all the delicious refreshments. Ellison is proud to consider themselves beer scientists who make beer better with each batch. Lansing Regional Chamber Member Mixers are a great way to meet new connections, reinforce relationships and visit a new business in Lansing each month. We hope to see you at the next one!

We make it our business to help you with yours.



At Blue Cross, we understand finding the right health care coverage for your employees can be no simple task. Which is why we make it easier on them — and you. We do it by giving them the personal attention your employees deserve and the help they need to make smart choices when it comes to enrollment and finding the right health care. Our robust data helps provide actionable insights to maximize benefit value for your employees while minimizing costs for you. It all adds up to smarter, better health care. See what Blue Cross can do for your business.

Learn more at bcsm.com/employers

Lansing Regional Chamber Annual Dinner Set for June 16 at Eagle Eye Banquet Center

Make sure to save the date for the Lansing Regional Chamber of Commerce (LRCC) Annual Dinner, taking place at Eagle Eye Golf and Banquet Center on Thursday, June 16 from 5:30 to 7:30 p.m.

The region's premier business celebration and networking event is celebrating its 110th anniversary this year and will feature cocktail party attire, a strolling dinner, drinks and great conversation.



The event will honor the outgoing LRCC board members with the 2022 board chair remarks. It will also celebrate the Community Service, Outstanding Small Business and Legacy Award recipients, the previous year's 10 Over the Next Ten, Celebration of Regional Growth, ATHENA and ATHENAPowerLink recipients, and LRCC Ambassadors.

The LRCC and LEAP are also proud to feature a new award, the Diversity Star Award, recognizing organizations that excel in their commitment to diversity, equity and inclusion in the workplace and community. **Tickets cost \$95 for members and \$140 for future members.** ●



“They treated me, not just my cancer.”

– Beth W.



More people trust Sparrow than any other healthcare system in Mid- Michigan for our highly skilled doctors. Sparrow is made up of highly skilled experts. From our state-of-the-art cancer and heart centers to our many primary and urgent care locations throughout the area, no one else offers the skill and dedication that we do.

To make an appointment, visit [Sparrow.org](https://www.sparrow.org)



Lansing Man Opens Nation's First Autism History Museum

By: Elizabeth Yassick, Kolt Communications

Lansing resident Xavier DeGroat has opened the country's first autism history museum in the Meridian Mall, highlighting the history of autism and notable figures on the autism spectrum. The museum opened in February of this year and is open for the public to better understand those living with autism.

DeGroat was diagnosed with Asperger's syndrome when he was four years old and has dedicated his life to advocating for those on the autism spectrum through the Xavier DeGroat Foundation. The foundation focuses on autism awareness and provides resources for those living with autism and their families. DeGroat helped pass a bill in Michigan that allows people with autism to have a special designation on their license and state identification so law enforcement can adequately handle interactions with them.

After successfully implementing this legislation, DeGroat wanted to expand on what he and his foundation were doing. He always had dreams of being a museum curator. When he was younger, he would frequently visit the Henry Ford Museum with aspirations of eventually working there. Fast forward years later, DeGroat created his museum to bring awareness to the topic of autism history.

"It's important for people to learn about autism history, so people with autism don't get labeled inappropriately," said DeGroat. "It's also so families and children can be optimistic that many important historical figures had autism and were very successful."

The museum features a timeline of autism history and includes biographies of important historical figures who had autism, such as Andy Warhol, Thomas Edison, and Albert Einstein. The museum is not only a learning experience for families to enjoy but also a sensory-friendly



experience for guests on the autism spectrum. The Mr. Rogers-themed museum is complete with a fish tank, music, and sensory-friendly toys to stimulate motor skills. DeGroat hopes to expand on this idea and grow the Meridian Mall location through special events.

"We will have events at the museum, so keep an eye out for story times with authors and other special guest speakers," said DeGroat.

The museum is free to enter, but gift shop items are available, and proceeds will go towards the Xavier DeGroat Foundation. To learn more about Xavier's efforts to raise awareness, visit www.xavierdegroatfoundation.org. ●

April is Autism Acceptance Month

April is a great month to visit the Xavier DeGroat Autism Museum at the Meridian Mall. The Autism Society of America, the nation's oldest leading grassroots autism organization, is proud to celebrate Autism Acceptance Month in April 2021 with its "Celebrate Differences" campaign. Designed to build a better awareness of the signs, symptoms, and realities of autism, #CelebrateDifferences focuses on providing information and resources for communities to be more aware of autism, promote acceptance, and be more inclusive in everyday life. For more information, visit www.autismsociety.org/autism-acceptance-month. ●

CTE Work-Based Learning Experience Leads Student to Success After High School

When Avery Cervantes-Lalone started the BioScience Careers program at the Wilson Talent Center as a junior in high school, he wasn't sure where it might lead him. He knew he had a passion for science and appreciated that he could start earning credit for something that had only been a hobby for him until that time.

Over the past few years, Cervantes-Lalone has completed an internship at the East Lansing/Michigan State University Water Treatment Plant, completed the two-year BioScience Careers program, graduated from Williamston High School, landed a job at the Delhi Township Water Treatment Plant and is working on a two-year water certificate from Bay de Noc Community College. He is excited about his future and appreciates the opportunities he has been awarded.

February was Career & Technical Education (CTE) Month® and stories like Avery's show the importance of the work-based learning opportunities provided to students through CTE programs. Work-based learning can come in the form of job shadows, internships, apprenticeships and part-time paid or unpaid employment. These opportunities help students determine if the career path they are exploring is something they can see themselves doing in the future.

"It is so imperative that we have work-based learning partners such as Michigan State University and the City of Mason who allow our students the opportunity to put what they are learning in the classroom into action in a work environment," notes Toby West, BioScience Careers instructor.

Tom Silsby, Skilled Trades Supervisor of Water Treatment Plant, served as Avery's supervisor during his work-based learning experience at Michigan State University. Avery spent eight weeks working with the water treatment department. Silsby included Avery in everything a new employee would experience.

"Participating with Wilson Talent Center's work-based learning program has been a great experience for me over the years," Silsby noted. "Avery took on the role with enthusiasm and by the end of the eight weeks, had progressed to the point of being able to discuss



plant process adjustments with the operators," Silsby also noted.

The BioScience Careers program studies laboratory safety, chemical technology, microbiology, DNA technology, forensics, biofuels and water technology during the first year. Students who choose to stay for a second year will complete work-based learning in the area of water technology, can complete two industry certifications, participate in a science fair project and serve as a mentor to first-year students. The program has college partnerships for credit with Bay College, Davenport University, Jackson College and Lansing Community College. The Wilson Talent Center, operated by Ingham Intermediate School District, offers career and technical education programs for high school juniors and seniors in Dansville, East Lansing, Haslett, Holt, Leslie, Mason, Okemos, Stockbridge, Waverly, Webberville, and Williamston. Applications are also accepted from Lansing School District, Fowlerville Community Schools and Eaton, and Clinton County schools. For more information, visit www.inghamisd.org/wtc.



Graduate
EAST LANSING

BUILT TO SPARTY ON

Across the street from the scenic Michigan State University campus, Graduate East Lansing embodies classic style and collegiate spirit.

While you're here, settle into Graduate Rock Bar, our rooftop bar + restaurant with amazing views and major Spartan pride.

133 Evergreen Ave • 517 348 0900 • graduatehotels.com/east-lansing



Nia Clouden
MSU Women's
Basketball

Visit msufcu.org for full terms and conditions.

ACHIEVE

a new set of wheels

Experience the open road in a reliable new vehicle with a low-rate auto loan from MSUFCU.

Apply today!
msufcu.org | 517-333-2424

 **msufcu**[®]
MSU FEDERAL CREDIT UNION

GLOBAL SUPPLY CHAIN

CONNECTING **GREATER** **LANSING** TO THE WORLD

If we weren't familiar with the words "supply chain" before the Covid pandemic, we certainly have a greater familiarity now with the term and its potential impact on our lives. Everywhere you look, the supply chain has been disrupted and is reflected in shortages of everything from fuel to food to computer chips and more.

The pandemic has been responsible for some supply issues as companies have struggled to adjust inventories to fluctuating consumer demands. However, broader issues have also been in play, including labor shortages, infrastructure challenges, and shipping and transportation disruptions, to name a few.

Michigan State University professor Steven A. Melnyk says Covid has forced an understanding of the limitations of the current supply chain model.

"Over the last 20 years, we've structured our supply chain to excel at reducing costs and delivering products," said Melnyk, professor of supply chain management at MSU's Broad College of Business. "We now have a global supply chain where we buy and sell our products internationally. It has also meant that we have become very dependent on every link in the supply chain doing its job.



Melnyk

The pandemic affected every link in the supply chain. There was a total collapse of the supply chain."

Professor Melnyk says part of the problem is the lean concept, where we have squeezed out all unnecessary inventory in the pipeline. He also says many businesses don't understand what is going on with suppliers further down the supply chain pipeline—a problem highlighted in the global microchip shortage. Additional pressure was applied to the supply chain when there was an uptick in consumer demand towards the end of 2021 and early 2022.

"People had money. They had their stimulus payments, and they were looking to spend," said Professor Melnyk. "The combination of that with a lack of supply has driven up prices."

Labor problems have also contributed to the supply chain challenges as many people left the workforce due to burnout, child care issues, and retirements. The recent Russian invasion of Ukraine is also adding uncertainty to the equation.

Professor Melnyk does feel that much of the supply chain problem will be short-term. He compares the current period to that of right after World War II when people came back from the war, were being well paid, and the U.S. economy was transitioning from war production to civilian production.



MSU Broad College of Business Minskoff Pavilion. Credit: Broad College of Business | Michigan State University

Professor Melnyk says his biggest concern is whether American industry will take the needed action to adjust to fundamental supply chain challenges. He cites small-to medium-sized manufacturers as a major concern — companies with 500 employees or fewer.

“These companies we don’t pay as much attention to, but in many cases, they are critical to the growth of the U.S. economy,” said Professor Melnyk. “They provide between 42 and 47 percent of employment. They also provide a lot of innovation.”

During the pandemic, manufacturers have been plagued with extended delivery times, particularly with freight coming from overseas. Numerous challenges in the trucking industry, including a shortage of drivers, have slowed deliveries, and a general labor shortage is taking a huge toll across the board.

Cindy Kangas, executive director of the Capital Area Manufacturers Council, notes that many manufacturers are working to shift their supplier base to include more local manufacturers instead of going overseas.

“I feel that the manufacturers that are excelling right now are the ones that are diversifying and changing it up a bit,” said Kangas. “The ones that are staying strong are the ones that have very strong relationships with their customers.”



Kangas

As painful as they have been, the supply chain disruptions of the past two years have heightened awareness of the critical importance that the linked supply chain network and all its various components play in our lives and our increasingly connected global economy. It also underscores the enormous opportunities that exist for economic growth for businesses that support that global supply chain.

GREATER LANSING BECOMING A SUPPLY CHAIN HUB

The Greater Lansing region has quietly been growing its footprint in the supply chain arena. According to the Lansing Economic Area Partnership, the supply chain sector contributes \$427 million to the local economy. Lansing Regional Chamber of Commerce (LRCC) president and CEO Tim Daman contends the region is perfectly situated for substantial growth in the supply chain area because of our central location and infrastructure.

“We have the freeway system connecting us to Canada and Mexico, a viable airport and rail line moving through the airport for moving goods,” said Daman. “The infrastructure is in place to support growth.”

Delta Township has grown into the regional hub for the supply chain sector. The township is home to one General Motors (GM) assembly plant, the recently announced GM battery plant, several GM parts



Daman

GLOBAL SUPPLY CHAIN: Connecting **Greater Lansing** to the World



Capital Region International Airport. Credit: Gary Shrewsbury Photography

suppliers, the Meijer distribution center, and Amazon's 1 million-square-foot fulfillment center, due to open in early 2024. Delta Township Supervisor Ken Fletcher says a big reason for that success is location, location, location.

"Delta Township is central to the whole mid-Michigan area," said Fletcher. "Our industrial land is located near major highways. For Amazon, they are right off I-496 and Creyts Road, which makes for quick and easy access to move goods."



Fletcher

Fletcher also notes that Delta Township has a good track record, pointing to efforts to support Meijer and the numerous investments in their Creyts Road distribution center. All of this bodes well for additional supply chain expansion down the road.

"We still have available land, which should allow us to continue to attract new projects," said Fletcher.

GENERAL MOTORS MAKING STRIDES IN OVERCOMING SUPPLY CHAIN CHALLENGES

For over a century, the Greater Lansing region and GM have enjoyed a partnership that has served as the foundation of regional growth and prosperity. The relationship received a major boost with GM's recent \$3 billion investment announcement in a new Delta Township battery plant that will support electric vehicle growth. It will also support additional investments in the Lansing Grand River Assembly Plant and Lansing Delta Township Assembly Plant.

The GM announcement comes when all major automakers, including GM, have been working to overcome a significant global microchip shortage, which has forced

extended shutdowns at its assembly plants, including those locally.

"We have a great team of people who have been working tirelessly with our suppliers to minimize the impact as much as possible," said Jennifer Bigelow, Plant Director, GM Lansing Grand River Assembly Plant. "They work closely to ensure communication and collaboration are strong. We had to be innovative and come up with new ways to work, with the goal to get as many vehicles to customers as possible."



Bigelow

Over the last few years, GM has been engaged in a continuous process of actively improving its relationships with suppliers, which has led to improved communication.



"We have become even more creative given the complexity of the many supply chain challenges, from the COVID-19 pandemic to the global semiconductor shortages to other part shortages and inclement weather impacts," said Bigelow. "Each day can bring an emerging challenge, but our teams take on that challenge, work together with the supply base and execute. This continues to build on the strong foundation we have built with our suppliers."

CAPITAL REGION INTERNATIONAL AIRPORT MOVING PASSENGERS AND CARGO WORLDWIDE

The Capital Region International Airport (LAN) is widely known for connecting local air travelers to destinations worldwide. Working with Delta and America Airlines, LAN provides direct flights to Detroit, Chicago, and Washington,



Lansing/Delta Township Assembly Plant. Credit: GM.



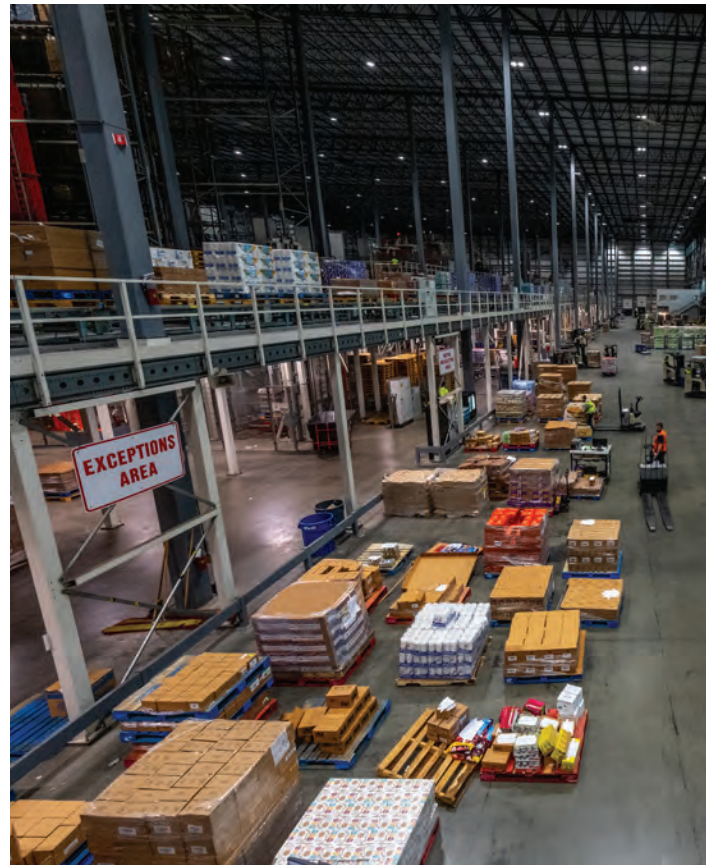
General Motors recently announced Battery Plant will be located in Delta Township near the existing Lansing/Delta Township Assembly Plant. Credit: GM.

D.C. and convenient connections globally. LAN has also just completed its 13th year of international flights through Apple Vacations, this year sending leisure travelers to Cancun and Punta Cana on nonstop flights from LAN. The first international season in 2009-2010 had just 15 international departures, which has grown to 50 total flights for the 2022 season.

The steady growth of cargo moving through LAN has been less well-known but equally critical. As a full-service U.S. Port of Entry, LAN can clear products and passengers quickly through U.S. Customs and Border Protection. The Port Lansing Global Logistics Center operates as a container freight station and is home to Foreign Trade Zone No. 275. These services are valuable to customers importing and exporting international goods.

The Capital Region Airport Authority (CRAA) recently announced that LAN will receive \$8.183 million in federal funding to expand the existing cargo ramp to accommodate current and future cargo operations. This funding was included in the federal budget bill that recently passed.

“This federal funding will allow us to expand our cargo



Meijer's Distribution Township in Delta Township. Credit: University Communications (UC) | Michigan State University

operations at the airport and give us the ability to better accommodate current demand and future growth as well as diversify revenues,” said Nicole Noll-Williams, president and CEO of the CRAA. “This could not have been done without the support of our local, state, and federal partners, and we want to thank them for their continued support and are looking forward to getting this project underway.”



Noll-Williams

The cargo ramp expansion is expected to cost an estimated \$11.9 million. The additional funds needed to complete the project will come from the Airport Improvement Program (AIP) and local match dollars. The project is expected to begin in the second quarter of 2022.

Approximately 60.7 million pounds of cargo is moved through LAN annually, and cargo operations continue to grow each year. Expanded infrastructure is necessary to accommodate current operations and support continued growth. This project is anticipated to provide approximately 63 percent more cargo ramp space, which is needed, especially during the first and fourth quarters.

The Lansing region is only 90 minutes away from 90 percent of the state's population. LAN's central location makes it a natural hub and an attractive area for businesses to invest and grow.

MSU SUPPLY CHAIN MANAGEMENT PROGRAM TOP IN THE COUNTRY

The Greater Lansing region has the inside track towards accessing some of the brightest supply chain talent in the world, thanks to the Michigan State University (MSU) Supply Chain Management program. MSU's undergraduate and graduate supply chain programs have been consistently ranked as the best in the country for several years.

MSU stands alone as the No. 1 supply chain/logistics graduate program in U.S. News & World Report's rankings of Best Business Schools for 2022—the program's fifth consecutive year to be ranked in the top spot. MSU first claimed the top spot in 2018 and hasn't looked back, continuing to be the standard-bearer in supply chain management education. The Broad College of Business at MSU has a reputation as the nation's No. 1 destination for supply chain management. For a milestone 10th consecutive year, Broad has held the No. 1 spot for supply chain management/logistics programs in U.S. News & World Report's 2021 Best Undergraduate Business Program rankings.

MSU is the oldest integrated supply chain school in the country. Professor Melnyk says the integrated nature of the curriculum is a big part of what makes MSU stand apart from other institutions. He also points to the strategic focus of the program as a big part of its success.

"We've realized that supply chains cannot be discussed in the absence of the customer," said Professor Melnyk. "We challenge our students to think about who is really the key customer. So, you look at the supply chain not through a cost or lean-based perspective, but through what the customer wants. Sometimes what you see is what the customer wants is not only the lowest cost."

Not only does this combination of real-world focused research and industry-leading expertise continually place MSU in the upper echelon of supply chain management programs, but the program's top-ranking

is also a key differentiator and attractor for top supply-chain management talent from diverse professional backgrounds.

Researchers in the supply chain management program are involved in innovative projects that will help meet some of the 21st century supply chain challenges. Among those projects are ones that deal with social responsibility auditing in supply chain networks, protecting supply chains from illegal items, developments in trucking industry costs, and cyber security across the supply chain.

OPPORTUNITIES FOR SUPPLY CHAIN GROWTH

Greater Lansing's location, combined with our already diverse economy and strong labor force, positions the region well for future expansion in the supply chain

sector. Cindy Kangas points to a potential growth opportunity that first emerged locally at MSU, where the new STEM building on campus was the first in Michigan to be built using mass timber. "Mass timber" is an umbrella term for a variety of panelized, engineered wood building materials such as large cross-laminated timber panels and glue-laminated (glulam) columns and beams with an array of structural and decorative uses in buildings.

Efforts are underway to have legislation passed that could clear the way for construction of a mass timber manufacturing facility in Michigan. Kangas also notes

the growth of numerous companies in the region in the biotech and medical technology sectors.

"We are curing cancer and fighting disease and doing all these amazing things right in our own backyard," said Kangas.

"There are significant growth opportunities in the supply chain sector," said Daman. "Our region is well-positioned to capture additional investment."

The combination of our central location, superior transportation network, advanced manufacturing sector, skilled and plentiful workforce, logistics-friendly infrastructure, and the expertise of MSU's internationally known supply chain management program serve as the foundation for significant growth in the supply chain sector of the economy. ●



"As painful as they have been, the supply chain disruptions of the past two years have heightened awareness of the critical importance that the linked supply chain network and all its various components play in our lives and our increasingly connected global economy. It also underscores the enormous opportunities that exist for economic growth for businesses that support that global supply chain."



ACCOUNTING AND ADVISORY EXPERTS

One smart business decision that leads to countless more.

Every business starts with a vision and boundless potential.

But, between keeping up with regulations, staying ahead of the competition, and finding and retaining top talent, balancing your day-to-day challenges and long-term goals has never been more difficult. That's where Maner Costerisan makes a difference. Our advisory solutions deliver strategic support that makes your business stronger today, while helping get you where you want to be.

Talk to an expert today at 517-323-7500



manercpa.com

© 2021 Maner Costerisan. All rights reserved.



Love Lansing

MEET LIKE A LOCAL

The GLCVB's role is to market the Capital Region as a travel destination and our vision is to inspire visitors and residents alike to love Lansing as much as we do. We understand what makes this community great. Work with us to host your next meeting or event and together we can grow the local economy while showcasing our hometown pride. Contact us today!



Lansing Regional Chamber Commends Congressional Delegation for Securing Funds for Regional Priorities

The Lansing Regional Chamber of Commerce (LRCC) commends the region's congressional delegation for its bipartisan efforts to successfully secure funding for several key projects that have been among the LRCC's highest regional priorities. The bipartisan government funding bill for fiscal year 2022 includes funds for a cargo ramp expansion at Capital Region International Airport, aid to help manufacturers compete globally, workforce training and development and additional infrastructure funding.



Peters



Stabenow



Slotkin



Moolenaar

"These projects are critical for our region's ability to upgrade our infrastructure, develop our workforce and compete more effectively in the global economy," said Tim Daman, president and CEO, LRCC. "We truly appreciate the hard work of our entire congressional delegation, especially U.S. Senators Gary Peters and Debbie Stabenow, and Representatives Elissa Slotkin and John Moolenaar. Our region is fortunate to have congressional representatives who are willing to work in a bipartisan fashion to support the critical needs of the Lansing region and state of Michigan."

Among the items of local importance in the legislation is the Capital Region International Airport receiving \$8.1 million to expand its existing cargo ramp. The expansion will better position the airport to move higher cargo volumes domestically and internationally. Additionally, the City of Lansing received \$1 million to modernize traffic signals and implement signal communications on the Michigan Avenue corridor to enable transit priority, emergency vehicle pre-emption, special event timing plans, and establish a framework to support autonomous and connected vehicles.

"Capital Regional International Airport has already established itself as a leader in supply chain logistics, most notably with the presence of a regional hub for UPS and the 200 jobs it provides," said Daman. "There is considerable opportunity for growth as evidenced by the recent decision by Amazon to construct a million-square-foot fulfillment center in Delta Township. Our region needs to capitalize on this opportunity and continue to invest in growing our local airport."

"Continued investment in the Michigan Avenue corridor is important to our region's future economic growth," said Daman. "This investment further enhances the economic importance of the Michigan Avenue corridor and establishes new opportunities for further commercial and residential development."

Other items in the legislation the LRCC has advocated for in recent years include \$158 million for the Manufacturing Extension Partnership (MEP), which provides technical assistance to small and medium-sized manufacturers to enable them to compete globally, support greater supply chain integration and provide access to information, training and technologies; \$2.9 million for workforce innovation and opportunity state grants; \$235 million for registered apprenticeships. ●

Banking Decisions. Made Locally.

Discover why
local matters.

FIRST NATIONAL BANK
of Michigan

Member
FDIC

fnbmichigan.com
COMMERCIAL | PERSONAL

Meet Brian Daniels: Lansing Newest City Council Member

By: Grace Sobeck, Kolt Communications, Inc.

Brian Daniels, a 35-year-old Lansing native, was appointed to the vacant Ward 1 position on Feb. 1, which serves northeast Lansing. Out of 11 candidates, Brian received five of seven votes from the Lansing City Council.



Daniels

Daniels is a U.S. Army veteran and founder of emPOWER Lansing, a local boxing gym. “The military gave me a strong sense of duty and the urge to continue to serve,” said Daniels. His experience running his gym has also taught him the power of encouragement.

economic advancements and housing opportunities in a way that makes people want to raise their kids here.”

“Let’s allow for an evolution of our city,” said Daniels. “We have to be prepared for changes in the economy, for jobs in the future, changes in technology, and projects to be done in our infrastructure.” Brian is a passionate supporter of cleaning up parks, protecting natural resources, building development, urban farming and community cohesion; to do this, Brian says we have to talk to each other.

Communication is key to Daniels. He believes that coexistence starts with a conversation. Brian yearns for a connected Lansing. Daniels introduced the idea of respectful tolerance.

“You can exist outside of this divided space, and respect one another,” said Daniels.

“You may not agree with someone, but you will treat one another as humans, with respect and you are going to talk to one another like adults – that will carry us forward.”

Brian has a challenge for us all in the Lansing community. “If you say you love Lansing, show me.”

Daniels will serve until the end of 2022 and plans on running to fill the vacant position in 2023. ●



LANSING REGIONAL CHAMBER

110th Annual Dinner

THURSDAY, JUNE 16 • 5:30-7:30PM

EAGLE EYE BANQUET CENTER

Register at lansingchamber.org

PRESENTING SPONSOR



RECEPTION SPONSOR



MANAGING PARTNER



OFFICIAL A/V & VIDEO PARTNER



COMMUNITY SERVICE AWARD SPONSOR



SUPPORT THE ARTS SPONSOR



LEGACY AWARD SPONSOR



GOLD SPONSORS




SILVER SPONSORS




BRONZE SPONSORS








Gary Shrewsbury Photography

CAPCOG Urges Lawmakers to Invest Federal Relief Dollars in Key Regional Projects

The Capitol Regional Council of Governments (CAPCOG) is urging state lawmakers in the Capitol Caucus to secure funding from federal relief funds provided to the state of Michigan for key regional projects that focus on economic development, job creation and infrastructure. In a letter to Capitol Caucus members, CAPCOG board members cited 29 regional projects that the group says are “critical community projects for the Greater Lansing region.”

“As the State Legislature continues to look at ways to maximize the state’s share of federal relief funds, we believe these projects are necessary and transformational investments that will help the region achieve long-term goals vital to our recovery and growth,” said Kam Washburn, CAPCOG board member and chair of the Clinton County Board of Commissioners.

Among the key regional projects cited by CAPCOG is \$325 million to help downtown Lansing recover from the Covid-19 pandemic. The group is advocating for a program to convert office to residential to help offset main street business losses as well as offset losses to the city.



Crenshaw



Whittum



Washburn



“With the state of Michigan being the largest employer in our urban core and reducing their footprint, we are advocating for the state to provide federal funds to create a statewide downtown multi-story conversion program,” said Bryan Crenshaw, CAPCOG Board member and chair of the Ingham County Board of Commissioners.

CAPCOG is also supporting a proposal to provide \$5 million to Downtown Lansing, Inc. for a comprehensive market analysis for purposes of developing a plan to rejuvenate the downtown core. CAPCOG also urged lawmakers to secure \$15 million in funding for the Michigan Joint Training Innovation Center which will be a shared public-private resource located at the former Sears Frandor location. The Michigan Joint Training Innovation Center will give Michigan citizens and businesses access to state-of-the-art technologies that will drive the digital economy.

CAPCOG also cited several county specific projects that are critical needs in Ingham, Eaton and Clinton Counties, including: Wastewater Treatment Plant improvements in Ingham County; the Chandler Road extension project in Clinton County and the Delta Township Water Resources Recovery Facility in Eaton County.

“These projects are transformational investments that will help our region achieve long-term goals in fostering business competitiveness and growing well-paying jobs,” stated Jeremy Whittum, CAPCOG board member and chair of the Eaton County Board of Commissioners. ●

NEW HIRES



Duvall

Noelle Duvall has been hired as the director of mental health & wellness at **Ingham Intermediate School District**. In this newly created position, Duvall will

supervise, provide support and guidance to mental health staff, and monitor grant funding for mental health programming. Duvall will also coordinate, organize and direct support to local districts seeking mental health support services.



McDonald

Michel McDonald has been hired as the director of transition & itinerant services at **Ingham Intermediate School District**. McDonald will be responsible

for planning and implementing activities and requirements for special education transition services and programs within Ingham ISD and its constituent districts. Additional responsibilities will include planning, implementing, evaluating, and improving designated special education support services and instructional programs for students with disabilities.

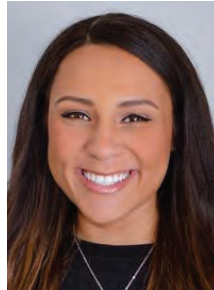


Siciliano

Public Sector Consultants, an independent public policy consulting firm focusing on research, evaluation, and strategy, added **Carmen Siciliano** to its energy

and environment team as a senior consultant. Siciliano will conduct

research and analysis of the energy and telecommunication sectors and provide strategic counsel for clients on energy policy and utility regulation issues.



Wright



Reilly



Largent

Moonsail North recently added three new team members: marketing strategist **Amariah Wright** and students **Shannon Reilly** and **Jenna Largent**, who are

completing fellowships as they also work toward receiving their graduate degrees at Michigan State University.



Weber



Issawi



Anderson

LAFCU has welcomed three employees: digital and graphic designer **Britney Weber**, IT manager **Ahmed Issawi**, and security engineer **Kyle Anderson**.

Weber supports the LAFCU marketing department by providing visual concepts and images that help communicate

the credit union's products, services, and initiatives. Issawi leads the information technology department with responsibilities that include administration, policy, staff supervision, local area network (LAN) functions, and compliance with regulatory security guidelines. Anderson works to guard the credit union's systems and software against cybercrime, including hacking, malware, ransomware, and insider threats.

Local **EXIT Realty** affiliated offices are pleased to announce the addition of the following individuals to their teams of dedicated real estate professionals: **Teresa Madill** and **Dana Richardson** have joined EXIT Great Lakes Realty located at 115 W. Lawrence Avenue, Charlotte; **Dana Miller**, **Sonia Mullaney**, and **Michelle Hanes** have joined EXIT Realty Select Partners located at 414 S. Clinton St., Grand Ledge. These EXIT Realty offices are proud members of EXIT Realty Upper Midwest's rapidly expanding network of independently owned and operated brokerages.

AWARDS

Edge Partnerships, a marketing communications firm, recently won five national Education Digital Marketing (EDM) Awards, recognizing the best educational websites, digital content, electronic communications, mobile, and social media. The honored projects include a branded content site for the Michigan Department of Education, winning a gold EDM award in the microsite category; the Michigan Cares campaign delivered through digital channels for Michigan Virtual, winning a gold EDM award in total digital marketing program; an informational blog post titled, "What do homeschoolers like about online programs?" for Michigan Virtual, winning a gold EDM award in the blog category; an informational blog post titled, "Many notable people among homeschool success stories" for Michigan Virtual, winning a

silver award in the blog category, and a social media campaign about homeschooling on Facebook for Centric Learning, winning a silver award in the social media content-campaign category.



Publicom Inc., a full-service marketing communications firm, has been recognized in the 19th Annual Service Industry Advertising Awards competition for digital marketing, employee recruitment, and media relations. Publicom's winning work and award categories are: What if? Team Member Vaccination Eblast for Smile America Partners, Farmington Hills — COVID Response Materials; Red Letter Day DDS Recruitment for Smile America Partners — Employee or Staff Recruitment; Media relations support for LAFUCU Listen & Learn Program for LAFUCU, Lansing — Total Public Relations Campaign and Media relations support for LAFUCU Act with Love & Equality Art Initiative for LAFUCU — Equality & Diversity Promotion — Total Public Relations Campaign. The two LAFUCU community programs earned a gold award, the highest in their categories.

Velrie Allen, Highfields' residential program direct services supervisor, has been named the 2022 recipient of the Carl J. Latona Distinguished Service Award. Velrie was honored with the award at Highfields' Employee Recognition Banquet on Saturday, February 26, at The Hidden

Gem in Holt. She was chosen for the award by her peers for her leadership and dedication to Highfields. The award recognizes integrity, passion for helping others, perseverance, and commitment to excellence. It is named after Carl J. Latona, who served as president and CEO of Highfields for more than 25 years.



Ingham Intermediate School District recently received a Gold Medallion Award from the Michigan School Public Relations Association (MSPRA) for its 2020 Headlee Special Education Restoration Millage Information Campaign. MSPRA's Gold Medallion Award recognizes outstanding programs or projects that advance education through responsible communication. Only four such awards were given to Michigan school districts this year.

Sparrow Carson Hospital has recognized a medical-surgical nurse known for her outstanding care with the DAISY Award for extraordinary nursing. **Lacie Janssen, RN**, was nominated by a patient and retired nurse of 37 years. The nomination says, "Lacie represents the hospital and profession extremely well. She is knowledgeable, kind, and caring. She was able to anticipate my needs and made my stay so much easier by keeping me informed."

DISTINCTIONS

Lansing Community College student **Martin Gale** has been selected into the elite Wholesale and Specialty Insurance Association (WSIA) 2022 internship program. The WSIA Internship Program awards



Gale

approximately 23 paid summer internships to college students interested in an insurance career. This exciting nine-week opportunity offers students experience

in both the underwriting and brokerage sides of the surplus lines marketplace by working with actual risks and learning alongside leaders in the industry.



Racine



Weismiller



Ferguson



Reich

Sparrow Carson Hospital welcomes **Michael Racine, M.D.**, as the new chief of staff. Dr. Racine earned his medical degree from Michigan State University (MSU) in 2002 and completed his residency at MSU from 2002 to 2005. Sparrow Clinton's new chief of staff is **Mark Weismiller, M.D.** Dr. Weismiller is a general surgeon at **Sparrow Clinton**, seeing patients through his practice at Sparrow Medical Group (SMG) St. Johns. **Troy Ferguson, D.O.**, is the current chief of staff at **Sparrow Eaton**. Dr. Ferguson is Sparrow Eaton's Breast Care Center Medical Director and practices general surgery at Lansing Surgical Associates. **Sparrow Ionia Hospital** welcomes **Brett Reich, D.O.**, as

the new chief of staff. Dr. Reich is board certified and has practiced emergency medicine in Detroit, Lansing, Ionia, and Charlotte. Sparrow Ionia also welcomes **Zuhair Abualrihy, M.D.**, as the new vice chief of staff. Dr. Abualrihy received his doctorate in Medicine from King Faisal University in 2004.



Tucker

Noted local OB/GYN **LaKeeya Tucker, D.O.**, has begun a two-year term as chief of medical staff at **Sparrow Hospital** in Lansing. Dr. Tucker is Sparrow's first

Black chief of staff and will represent and communicate the views of medical staff members while working with Sparrow leadership to ensure quality, compassionate care for all patients. **Michael Kent**

McLeod, M.D., MBA, FACS, FACE, has been elected to serve as chief of staff-elect during Dr. Tucker's term. Dr. McLeod joined the medical staff at Sparrow Hospital in 2009 when he came to Lansing to revive the general surgery residency program.



The **Sparrow Herbert-Herman Cancer Center** is the only medical center in Michigan and has joined such national healthcare heavyweights as the Mayo Clinic and Cleveland Clinic in participating in the landmark I-SPY 2 clinical trial for

breast cancer patients. Sparrow is mid-Michigan's leader in precision medicine, in which cancer treatment is individualized based on the patient's specific tumor instead of using a one-size-fits-all approach. Any patient who receives care at the Sparrow Breast Cancer Clinic will be screened for participation.

PFCU has kicked off a year-long celebration of its 75th year of operations. Initiated by Holley Carburetor plant employees in Portland in 1947, PFCU's humble beginning started when its employees pooled their resources and applied as a credit union. When the plant closed a few years later, operations moved to the basement of PFCU's then manager, Arden McCrumb. PFCU offered only one savings account and one loan product in the early years. They have since grown into a full-service credit union providing every type of financial service their members

GAIN YOUR EDGE

Whether you're searching for new investors, high quality tenants or your next investment property, we have the digital know-how to help you rise above the competition. Read our latest article to learn more.

We're NAI Mid-Michigan. Your best choice for commercial real estate.

NAI Mid-Michigan
naimidmichigan.com • 517.487.9222

require. PFCU has grown from four employees in 1978 to more than 180 staff members. Assets have grown from \$3.5 million to more than \$750 million, and membership has increased from 3,000 to more than 53,000.



Brzezinski

Origami Rehabilitation would like to congratulate occupational therapist **Colette Brzezinski** on co-publishing an article in Occupational Therapy Practice Magazine on the embedded therapy model on an organ transplant unit within acute care. Brzezinski's other recent accomplishments include serving on the Brain Injury Association of Michigan's Steering Committee, teaching adjunct courses for Western Michigan University's Occupational Therapy Program, and receiving a Going Pro grant.

Magazine on the embedded therapy model on an organ transplant unit within acute care. Brzezinski's other recent accomplishments include serving on the Brain Injury Association of Michigan's Steering Committee, teaching adjunct courses for Western Michigan University's Occupational Therapy Program, and receiving a Going Pro grant.



Shetler

Origami Rehabilitation would also like to congratulate physical therapist **Kacy Shetler** on completing her Vestibular Rehabilitation and Concussion Certification through the American Institute on Balance. Kacy was also selected as the recipient of a Going Pro grant.

through the American Institute on Balance. Kacy was also selected as the recipient of a Going Pro grant.



O'Brien

Shawn H. O'Brien, CCIM, vice president at Colliers Lansing, was inducted into Colliers' 2021 Everest Club. The Everest Club represents professionals who have excelled at client service, worked

very collaboratively, and lived Colliers' values. It also recognizes the top 10 percent of all Colliers professionals in brokerage, valuation, and corporate solutions across the U.S. business based on revenue production.



Piper

The Team Lansing Foundation, along with the **Greater Lansing Convention and Visitors Bureau (GLCVB)**, is pleased to recognize **Amy Piper, CTA**, as the Greater Lansing Certified Tourism Ambassador Star of the Year. Piper was honored at the GLCVB Annual Meeting on March 1 at the NCG Cinema in Lansing.

MSU Federal Credit Union (MSUFCU) announced its learning and development program ranked No. 18 out of 95 placed organizations in the 2022 Training APEX Awards. This is the fourth consecutive year Training Magazine has recognized MSUFCU for best-in-class employee training and development. MSUFCU also received the Outstanding Training Initiative Award for the second consecutive year.

Each March, the **Arts Council of Greater Lansing** celebrates Youth Art Month with its Young Creatives Billboard Project in partnership with Adams Outdoor Advertising. Youth Arts Month is a national program founded by the Council for Art Education in 1961 and emphasizes the importance of having quality arts education programming in the K-12 school curriculum. This year, 22 original artworks were submitted by Greater Lansing area teachers and six final pieces were selected for the billboards. The 2022 Young Creative billboards feature the art of the following youth artists: **Clara Hedges**, Cornell Elementary, Okemos Public Schools, fourth grade, teacher: **Lindsey Price**; **Patrick Keefe**, St. Martha School,

Diocese of Lansing, second grade, teacher: **Elizabeth Wylegala**; **Ada Lesnau**, Cole Academy East, Cole Academy School District, second grade, teacher: **Layna Lesnau**; **Claudia Miklavcic**, Haslett High School, Haslett Public Schools, 12th grade, teacher: **Kaylee Fletcher**; **Kayla Turner**, Williamston High School, Williamston Community Schools, 12th grade, teacher: **Meagan Kubu**, and **Azul Vazquez**, Waverly Middle School, Waverly Community Schools, eighth grade, teacher: **Laura Weber**.

PROMOTIONS



Matthews

Reflective of the strong leadership that has positioned the organization as a national specialty insurance solutions provider, **A.F. Group** has announced the promotion of **Walter Matthews** as vice president of A.F. Specialty. Since joining A.F. Group in 2010, Matthews has held various positions within the actuarial department, providing oversight of the organization's actuarial services related to reserving, pricing, underwriting strategies, forecasting, and reinsurance. Additionally, he led the launch of the company's assumed reinsurance business and has cultivated strong relationships with valued reinsurance and program partners.



Rosa-Derdowski

Michelle Rosa-Derdowski has been promoted to the director of special education program accountability at Ingham Intermediate School District. Rosa-Derdowski will be responsible for planning and implementing activities and

requirements for special education compliance, results, and technical assistance with Ingham ISD and its constituent districts. Additional responsibilities will include supporting local districts, public school academies, ISD programs, and community agencies via a collaborative consultation model.



Toby

Cinnaire has announced the appointment of **Deborah Toby** to chief human resources officer and chief diversity officer for the organization.

Deborah brings

more than 25 years of experience to the role, serving most recently as executive vice president, human resources. She played a key role in implementing best practices to integrate Cinnaire's principles of diversity, equity, and inclusion across Cinnaire. Deborah has also successfully led the development of Cinnaire's talent acquisition process, ensuring that prospective talent is engaged in an equitable selection process that is competency-based and accessible to people across all dimensions of diversity.

BOARD OF DIRECTORS & EXECUTIVE COMMITTEE UPDATES



Hamilton

Peckham has named a new director to its board, **Wendy Hamilton**, chief executive officer of TechSmith.

TechSmith is the market leader in screen capture and video editing

tools. Hamilton is a values-first leader committed to the practice of putting customers first. Before joining TechSmith, Hamilton was the global head of life sciences at Thomson Reuters.

COMPANY NEWS

PFCU is excited to announce plans to open a branch in Perry. This addition aligns with the credit union's history of servicing small rural communities by providing leading-edge banking technology with local, personalized service. Renovations are underway for the new location at 150 S. Main Street in Perry. The credit union will occupy the open space in the building shared with Central Pharmacy. There will be an open floor plan and modern amenities. This branch will be technology-driven, with interactive teller machines available inside and offering extended hours of service through the drive-thru.

The Association for Career & Technical Education recognizes Career & Technical Education (CTE) Month every February. CTE programs prepare students for high-wage, high-demand career fields, such as information technology, healthcare, and advanced manufacturing, to name a few. **Ingham Intermediate School District** offers 19 CTE programs at the Wilson Talent Center (WTC) on their Mason campus. These programs are available to high school juniors and seniors, and students spend half of their school day at the WTC and the other half at their local district. Students are earning high school credit, free college credit, and state and national industry certifications. Students may also be eligible to participate in the Capital Region Technical Early College, where they can earn up to 61 college credits towards a bachelor's degree at no cost to the student.

Sparrow Clinton Hospital announces the opening of the **Sparrow Clinton Wound Clinic**, an outpatient facility offering a comprehensive approach for patients with non-healing wounds. The Sparrow Clinton Wound Clinic team features nurses and technicians with advanced training in wound care. Patients at the clinic

are examined by clinical staff and each patient is evaluated for all possible related conditions, such as diabetes, that could interfere with proper healing. The care team follows an evidence-based clinical analysis to determine why wounds are not healing, then develops individual treatment plans based on the most effective technologies available to provide maximum healing and relief.

The brightest minds in cancer care are coming together to work side-by-side at the Karmanos Cancer Institute at **McLaren Greater Lansing**, opening doors to new frontiers in cancer care and research. The new cancer center is a collaboration between McLaren Greater Lansing, and the Karmanos Cancer Institute, in partnership with MSU Health Care. The partnership will help recruit top clinicians to the region, provide outstanding patient care, and access new life-changing therapies and treatments. Karmanos Cancer Institute is headquartered in Detroit, with 15 locations throughout Michigan and northern Ohio. Karmanos is Michigan's largest cancer care and research network as part of McLaren. Caring for approximately 12,000 new patients annually and conducting more than 800 cancer-specific scientific investigation programs and clinical trials, Karmanos is among the nation's best cancer centers and is one of the 51 National Cancer Institute-designated comprehensive cancer centers in the United States.

The **Greater Lansing Sports Authority (GLSA)** is proud to announce that the region will host multiple national-level events from February 25 through April 10. Collectively, mid-Michigan will welcome over 3,000 athletes from across the U.S., competing in judo, wrestling, archery, and bowling, all of whom will bring additional coaches, officials, and spectators looking to fill hotels, restaurants, shops, and more. Often the GLSA will work for years to court events to the region. The team

builds extensive relationships with hospitality partners, sports venues, and local organizing committees to find the perfect mix of amenities a group may be seeking. The services they provide are primarily free, but the economic benefit of sports tourism to the local community is tangible. These five events alone are expected to generate a significant economic impact for the Lansing region.

Highfields, Inc. and East Jackson Community Schools have partnered together to offer an after-school program, Reaching Higher, similar to those being offered at eight other school sites through the Michigan Department of Education 21st Century Community Learning Center Grant Program. Students in Reaching Higher have been shown to improve their social skills, develop their interests and earn better grades. East Jackson Community Schools showed interest in offering Reaching Higher to their students and contacted Highfields to initiate the program. The East Jackson Reaching Higher Program started on January 10, and the site operates at their middle school and high school. The East Jackson administration determined that their greatest need was for Highfields to provide the program to students in seventh through ninth grades.

Global sustainable energy producer EDL and key project stakeholders bp, **Consumers Energy**, and **Granger Waste Services** welcomed the start of operations at the Wood Road Renewable Natural Gas (RNG) Facility. The landfill gas to RNG facility is the first of its kind in Lansing, Michigan. The RNG produced at the Wood Road RNG facility will be added to Consumers Energy's existing pipeline network for delivery to end-users. Bp will take a portion to supply natural gas-powered vehicles across the United States. The RNG will also be delivered for residential, commercial, and industrial use in North America.



A new East Lansing quick-serve restaurant will offer fresh, healthy smoothies and fruit bowls inspired by the summertime. **Playa Bowls** plans to open at 225 E. Grand River Ave. in East Lansing, across from Michigan State University. Playa Bowls is a healthy alternative to fast-casual dining options. It offers smoothies, fresh-pressed juices, coffee, oatmeal, acai, pitaya, coconut, green bowls, and more with a variety of toppings, all with no added sugar. Playa Bowls' acai is imported directly from Brazil to New Jersey, so the company can ensure it is of the highest quality. Amy Richter-Perkins, associate vice president with Colliers Lansing, represented landlord Fabian Enterprises in leasing the space, which was previously home to an off-campus student housing company.



Sellers

The **Lansing Community College (LCC) Foundation** recently received a major gift from the estate of **Richard A. Sellers**. Sellers passed away in 2012 and left an initial gift of \$100,000 to support scholarships for students at LCC. This year, after the passing of his longtime partner, the foundation received an additional gift of \$900,000 from Sellers' estate. These generous gifts will support scholarships in perpetuity as an endowment with the foundation. Sellers was a graduate of Lansing's Eastern High School. After receiving a degree in finance and accounting,

he began a career in banking, retiring from Comerica Bank, where he served as vice president of commercial lending. Sellers felt strongly that education was the solution to many of society's problems.

Lansing Community College

held "Tech Forward: Women in Trades" on March 18. The event was designed to expose those who self-identify as women to careers that provide financial stability and economic mobility. It also provided opportunities to learn about career pathways that might not have been previously accessible. The event featured keynote speaker Megan Doherty, president and CEO of F.D. Hayes Electric. Megan is the fourth generation of the Hayes family to own and operate the 98-year-old family business.



Lansing-based creative agency **Michigan Creative** is excited to announce its recent move to a historic office building between downtown Lansing and Old Town. Michigan Creative purchased the 4,407 square-foot historic office space located at 1003 N. Washington Ave. For the past ten years, Michigan Creative has built a name for itself at their REO Town location at 1149 1/2 S. Washington Avenue, above Blue Owl. This new location celebrates the hard work and dedication that has gone into cultivating a company like Michigan Creative.

The **Lansing Economic Area Partnership (LEAP)**, with support from the **PNC Foundation**, has opened applications for Elevate, a

Black business accelerator program in Clinton, Eaton, and Ingham counties. Elevate, an entrepreneurial support program focused on empowering, refining, enhancing, and scaling Black businesses to grow into the future, is meant to help Black business owners improve and maximize operational efficiency and heighten business sophistication to drive increased profitability and revenue. The Elevate initiative is made possible through a three-year grant from PNC as part of its \$88 billion Community Benefits Plan announced in 2021, inclusive of a previously announced commitment of more than \$1.5 billion to support Black Americans' economic empowerment and low- and moderate-income communities.

The **Tri-County Regional Planning Commission** is conducting a comprehensive housing assessment of Clinton, Eaton, and Ingham counties called HousingDrives to better understand and address the existing housing market trends and barriers in Greater Lansing. HousingDrives will use qualitative and quantitative information to provide a holistic conversation on how housing impacts every aspect of the economy. This will include a data-driven assessment at the neighborhood, city, and regional scale and a strategy with specific policies addressing the region's housing needs.



Drzewicki

Drzewicki has served public education for 35 years in several roles, as superintendent of Mason Public Schools and White Pigeon Community Schools, principal at Coldwater Community Schools, and

Superintendent of **Mason Public Schools Ronald Drzewicki** notified the Board of Education on Monday, February 28, of his intent to retire.

teacher at Vandercook Lake Public Schools. His retirement is effective September 1.



Drzewicki

at Origami. Pelvic health therapy is recommended for disorders of the pelvic region, including, but not limited to, pain, weakness, and/or dysfunction of the pelvic floor muscles. Men, women, young athletes, aging adults, new moms, and others may benefit from this type of therapy.

Origami Rehabilitation would like to recognize physical therapist **Mariah Morgan** for introducing pelvic health therapy as a specialty service



Brzak

pediatric services can benefit newborns to adolescents with neurological disorders, orthopedic injuries, vision diagnoses, mental health needs, speech, and oral motor conditions. Brzak's expertise and passion were essential in preparing to help Origami's youngest clients reach their goals.

Origami Rehabilitation would also like to recognize occupational therapist **Emilie Brzak** for spearheading their new pediatric service line. Origami's

In one of the first steps toward fruition of Sparrow's largest-ever investment in the region, **Sparrow Medical Supply** is improving access to patients by moving to the Frandor Shopping Center. The retail portion of the store opened Monday, February 21, at 326 E. Morgan Lane, near Liberty Coin and Ulta Beauty. The store is open from 8 a.m. to 5 p.m. and will be more centrally located to many area residents.

Sparrow is promoting a new cardiac tool for patients that's offered nowhere else in Mid-Michigan. The cardiac MRI machine takes a comprehensive, thorough look deep into a patient's heart, allowing highly skilled physicians to better evaluate the structure and tissue. It's a major advancement in measuring how the heart is functioning and can uncover issues that other technology can't. And it's close to home, so that mid-Michigan residents don't have to travel outside the area.

MSU Federal Credit Union (MSUFCU) celebrated the grand opening of its Auburn Hills regional office on February 24, with an event for community members and partners. Attendees of the event enjoyed formal remarks by April Clobes, MSUFCU president/CEO; Angela Brown, MSUFCU board chair; Dr. Ora Hirsch Pescovitz, president of Oakland University; and Kevin Daniels, mayor of Auburn Hills, among others. After a ceremonial ribbon cutting, attendees toured the new building.



Twenty-two students from the **Wilson Talent Center (WTC)** have competed in regional SkillsUSA competitions and have earned the honor of advancing to the state competition. SkillsUSA is a national non-profit organization serving teachers and high school and college students preparing for careers in trade, technical, and skilled service occupations. Students from the construction, criminal justice, new media, and precision machining programs represented the WTC at regional competitions. ●



LANSING REGIONAL CHAMBER

The Stadium District
500 East Michigan Ave., Suite 200 | Lansing, MI 48912
517.487.6340 | lansingchamber.org

Change Service Requested

PRSRT STD
U.S. POSTAGE
PAID
LANSING, MI
PERMIT NO. 689

Martin Property Development

Building Environments Where Businesses Thrive



30,000 Sq Ft
Professional Office
Build-to-suit



OFFICE



INDUSTRIAL &
MANUFACTURING



RETAIL &
RESTAURANT



MEDICAL

- Full-service construction management and development company
- Build-to-suits, ground up construction, renovations, or remodels
- Serving local, regional, and national clients for 40 years
- **Creative solutions for complex projects**

Contact Us / 517 351-2200

martincommercial.com/propertydev