

The background of the cover features a close-up of an electric vehicle charging station on the left, with a white charging cable plugged into a green port. A white electric car is partially visible in the background, with green light trails and a glowing green lightning bolt icon on the charging station's panel. The overall aesthetic is modern and tech-oriented.

# FOCUS

THE MONTHLY BUSINESS NEWS MAGAZINE OF THE  
LANSING REGIONAL CHAMBER OF COMMERCE

**MARCH 2022**

## GM EXPANDS ITS FOOTPRINT IN GREATER LANSING

### IN THIS ISSUE

**MESSAGE FROM CHAMBER:**  
GM NEWS POINTS TO THE  
POWER OF COLLABORATION  
CIVIL RIGHTS ICON ERNEST GREEN  
SPEAKS TO ECONOMIC CLUB  
LRCC/LEAP ANNOUNCE  
DIVERSITY STAR AWARD

## 2022 Board of Directors

### Officers

*Board Chair*

**Mike Zamia** / Niowave

*Past Chair*

**Wendy Hamilton** / TechSmith

*Chair-Elect*

**Matt Resch** / Resch Strategies

*Legal Counsel*

**Patricia Scott** / Foster, Swift, Collins & Smith, P.C.

*Treasurer*

**Luke Terry** / Rehmann

*President*

**Tim Daman** / Lansing Regional Chamber of Commerce

### Division Directors

*Marketing and Communications*

**Lisa O'Connor** / Publicom

*Government Relations*

**Amy Scoby** / Christman Company

*Member Services*

**Michelle Massey** / TechSmith

*Regional Initiatives*

**Kirk Ray** / McLaren Greater Lansing

### At-Large

**Tina Brumley** / Auto-Owners Insurance Co.

**April Clobes** / MSUFCU

**Jim Farrell** / Dart

**Roger Graff** / Farm Bureau Insurance Co.

**Glenn Granger** / Granger Construction

**Keith Granger** / Granger

**David Lewis** / AT&T

**Darci Marcum** / General Motors

**Van Martin** / Martin Commercial Properties

**Jeff Metts** / Dowding Industries

**Ken Misiewicz** / Pleune Service Company

**Steve Quinlan** / Neogen

**Joe Ruth** / Sparrow

**Lisa Webb Sharpe** / Peckham

**Lisa Ellen Smith** / InVerve Marketing

**Todd Surline** / Hiring Solutions

**Dr. Kathleen Wilbur** / Michigan State University

**Kevin Zielke** / AF Group

**David Zyble** / Jackson National Life

### Board Partnerships

*LEAP, Inc.*

**Bob Trezise** / LEAP, Inc.

*Lansing 5:01*

**Chris Sell** / Michigan State University

*ATHENA WIN*

**Jenn Sturdy** / PNC

*Black Business Alliance of Greater Lansing*

**Dr. Alane Laws-Barker** / Sparrow

*Greater Lansing Hispanic Chamber of Commerce*

**Chaz Carrillo** / David Chapman Insurance Agency

### FOCUS

*Editor*

**Ashley Sandborn**

*Feature Writer*

**Ross Woodstock**

*Design*

**Tandem Studios**

*Cover Image*

**iStock**



### JOIN THE LEADERSHIP CIRCLE

Leadership Circle investors are proven business and community leaders. We value their commitment and applaud their efforts to strengthen our region with their leadership and appreciate the important role they play in advancing our organization.

Stay Connected. **Stay Social.**

[facebook.com/LansingChamber](https://facebook.com/LansingChamber)

[twitter.com/LansingChamber](https://twitter.com/LansingChamber)

[Lansing Regional Chamber of Commerce](https://www.youtube.com/LansingRegionalChamber)

[@LansingRegionalChamber](https://www.instagram.com/LansingRegionalChamber)

[Lansing Regional Chamber of Commerce](https://www.linkedin.com/company/LansingRegionalChamber)

LANSING **REGIONAL** CHAMBER  
**CONTENTS**



iStock/ Blue Planet Studio

*on the cover*

**GM EXPANDS ITS FOOTPRINT IN GREATER LANSING**

**MEMBER NEWS**

- 08** Maner Costerisan Named 'Best Firms to Work For' by *Accounting Today*
- 09** Enspired Solutions Works to Eliminate Pressing Environmental Issue

**ECONOMIC CLUB**

- 10** Civil Rights Icon Ernest Green Speaks to Economic Club

**CHAMBER NEWS**

- 12** Lansing Regional Chamber of Commerce Announces Promotions of Key Executives

**FOCUS ON TALENT**

- 14** Longtime Community Advocate Joan Jackson Johnson Passes Away
- 15** 2022 ATHENA Leadership Award and 2023 ATHENAPowerLink Award Nominations Open

**DIVERSITY AND INCLUSION**

- 22** Diversity Star Award to Recognize DEI Regional Champions
- 23** Lansing Regional Chamber of Commerce Announces Participants for First DEI Executive Roundtable Program

**ADVOCACY**

- 24** Amy Scoby of Christman Company to Lead 2022 LRCC Policy Committee

**#LOVELANSING**

- 26** Redevelopment of Malcolm X's Former Elementary School to Create New Commercial, Residential Space
- 27** Communities In Schools Affiliates Announces Transformative Investment to Help Students Overcome Obstacles to Learning
- 28** Capital Area United Way Receives \$10,000 Grant from United Way Worldwide's COVID-19 Community Response and Recovery Fund

*monthly features*

- 04** Message from the Chamber
- 05** Calendar of Events
- 06** Thank You Renewing Members
- 07** Chamber Milestones
- 07** Welcome New Members
- 11** Chamber in Action
- 29** Members on the Move

## General Motors Commitment Demonstrates the Power of Collaboration

**G**eneral Motors' (GM) announcement that it will invest more than \$3 billion in the Greater Lansing region is cause for great celebration. GM's decision to construct a \$2.6 billion battery plant to serve its entry into the electric vehicle (EV) market will propel Greater Lansing into the heart of the EV revolution and solidify our decades-long relationship with GM. The additional \$500 million investment in the existing Lansing Grand River and Lansing Delta Township assembly plants is a further dose of good news for our region.

The latest development with GM demonstrates the role and importance of the power of collaboration and bipartisan cooperation. Without the work of our state and local officials over the past few months, the GM announcement would not have been possible.

We also owe a debt of gratitude to our community leaders in the late 1990s and early 2000s who came together and formed the Keep GM Task Force when our region was faced with the prospect of losing GM entirely. The Keep GM effort changed that dynamic. Lansing Mayor Dave Hollister, Lansing Regional Chamber Board President Jack Davis, Delta Township Supervisor Joe Drollett, Ray Tadgerson from C2AE, labor leaders and others set aside differences between the city and suburbs and between labor and management and led an effort that not only kept GM here but led to the construction of the new Lansing Delta Township assembly plant. The group also had the foresight to anticipate another plant being built in the future, a dream that is now becoming a reality.

The collaboration model utilized 20-25 years ago has served us well. Our state officials shelved partisan differences to put together an incentive package to help secure the GM deal. Locally, what LEAP and Bob Trezise have done in bringing together the City of Lansing, Delta Township and MEDC has been incredible. Much like what Dave Hollister and Joe Drolett accomplished two decades ago, current Lansing Mayor Andy Schor and Delta Township Supervisor Ken Fletcher have accomplished in 2022. Kudos to them all!

The GM investment opens the door to additional investments in our region, including the potential for electric vehicles to be built locally down the road. Economists say that a plant like GM is building here will result in seven jobs elsewhere in the region for every one job inside the plant – that equates to close to 14,000 additional jobs throughout the region. It does not consider the supplier base and other industries considering our region, including chip manufacturing and additional EV and battery type productions. The GM investments open the potential for new industry sectors, including plastics, pharmaceuticals, biotech and other diverse advance manufacturing possibilities.

Lansing's history with GM goes back more than 100 years, when R.E. Olds moved his fledging auto business to downtown Lansing. We should all be proud that the future with GM continues well into the 21st century. Our relationship thrives because of outstanding leadership, vision, determination and the power of collaboration! ●



**TIM DAMAN**  
PRESIDENT AND CEO  
LANSING REGIONAL  
CHAMBER OF COMMERCE



**Lansing's history with GM goes back more than 100 years, when R.E. Olds moved his fledging auto business to downtown Lansing. We should all be proud that the future with GM continues well into the 21st century. Our relationship thrives because of outstanding leadership, vision, determination and the power of collaboration!**

## March 2022

3/3

### POLICY FORUM

**Thursday, March 3 from 5 to 8 p.m.**  
**Country Club of Lansing | 2200 Moores River Drive; Lansing, MI**

Sponsored by Jackson National Life, the Policy Forum will welcome veteran White House correspondent, Jon Decker of Gray Television. Decker has covered the Clinton, Bush, Obama, Trump and Biden administrations, 26 State of the Union addresses and seven presidential elections.

**Cost:** LRCC member: \$55; Future LRCC member: \$75; Table of eight: \$425

3/8

### MARCH MEMBER MIXER

**Tuesday, March 8 from 4:30 to 6:30 p.m.**  
**Ellison Brewery | 1314 S. Washington Ave.; Lansing, MI**

Brew up the good times and groovy connections at Ellison Brewery's newest location in REO Town!

**Cost:** Complimentary for LRCC members

3/15

### LANSING ECONOMIC CLUB

**Tuesday, March 15 from 11:30 a.m. to 1:30 p.m.**

Sponsored by Moonsail North, the event will feature a panel of distinguished women in leadership who will discuss their backgrounds and the steps they took to achieving success. Panelists include: April Clobes, president & CEO, Michigan State University Federal Credit Union, Kelly Preston, owner & president, Capital Steel & Wire, and Denise Maybank, vice chancellor for student affairs and enrollment management, City University of New York. The moderator will be Elaine Hardy, director for diversity, equity & inclusion, City of East Lansing & 2020 ATHENA Award recipient.

**Cost:** Complimentary for Lansing Economic Club members; LRCC member: \$55; Future LRCC member: \$75; Table of eight: \$425

3/22

### CHAMBER 360

**Tuesday, March 22 from 8:30 to 10:30 a.m.**  
**Lansing Regional Chamber of Commerce | 500 E. Michigan Ave., Suite 200; Lansing, MI**

The Chamber 360 program provides an intimate venue for current LRCC members or businesses considering joining the LRCC to connect with other members, provide brief remarks, meet the LRCC team and take a deeper dive into the value and support you can utilize. The program's goal is to acclimate you with your investment and put together a plan of action for membership engagement and strong ROI.

**Cost:** Complimentary for LRCC members

3/23

### DIVERSITY, EQUITY & INCLUSION SERIES

**Wednesday, March 23 from 10 to 11 a.m.**  
**Lansing Regional Chamber of Commerce | 500 E. Michigan Ave., Suite 200; Lansing, MI**

A discussion of the small business, 8A, women-owned small business (WOSB), veteran-owned small business (VOSB) registration requirements and benefits of the certifications. Speakers: Mike Hindenach, program manager of PTAC of South Central Michigan & Shannon Barker, procurement counselor of PTAC of South Central Michigan.

**Cost:** Complimentary for LRCC members



The Lansing Regional Chamber of Commerce (LRCC) hosts numerous events monthly, from Member Mixers to Lansing Economic Club programs. The events and programming provide valuable content and information and give members unique opportunities to connect and network.

The LRCC encourages members to check their email, follow LRCC social media channels, and visit the [LRCC website](https://www.lansingchamber.org) for the most updated information on upcoming educational offerings and networking opportunities.

**Registration is available on the LRCC website.**

## Virtual Business Roundtables

Virtual roundtables allow community and government leaders an opportunity to share what is going on in the community and determine ways to advise the tri-county region.

### Delta Township - Eaton County

Wednesday, March 2 from 9 to 10 a.m.

### Lansing - Delhi Township

Wednesday, March 9 from 9 to 10 a.m.

### East Lansing - Meridian Township

Wednesday, March 16 from 9 to 10 a.m.

## Thank You Renewing Members

AdviCoach of Mid-Michigan	Great Lakes Reality Labs/ Haptix Studio	Preuss Pets	Sunrise, SRL
Ascend Physical Therapy and Rehab	Greater Lansing Association of REALTORS	PTAC of South Central Michigan	T.A. Forsberg, Inc.
Bekum America Corporation	Happy's Pizza	Redhead Creative Consultancy	Tandem Studios
Brightwell Behavioral Health	Harbert Home Systems	Reid Machinery, Inc.	The Shyft Group
Burcham Hills: A Life Plan Community	Holiday Inn Express & Suites (Amerilodge Group)	RSDC of Michigan	Transworld Business Advisors of Lansing
CAMPGROUNDS-R-US	Horizon Bank	Shaheen Chevrolet, Inc.	Tri-Star Trust Bank
Capital Area MICHIGAN WORKS!	Hospice of Lansing -Ionia Area Hospice	Shaklee	Village Green of Lansing Apartments
Capital Insurance Services, Corp.	Impression 5 Science Center	Spotlight Media Studios	Washington Avenue Advisors
Capitol Barricading, Inc.	The Investment Center	Storage Sense - North Aurelius Road	Western Michigan University Cooley Law School (WMU)
Capitol Fundraising Associates	Jackson National Life Insurance Co.	Structure Development Group	White Law PLLC
Castle Pointe Apartments - Monarch Investment	Keller Williams Realty Lansing	Sunrise Cleaning and Construction Services	Yeo & Yeo CPAs & Business Consultants
Cawood Building Co.	Lakewood Apartments - Monarch Investment		
Ciesa Design	Lansing Ice & Fuel Company		
City of St. Johns	Lansing Junk Removal		
Coolidge Place Townhomes	Lehman, Wesley & Associates, Inc.		
Cypress Home Care, Inc.	Life Insurance Association of Michigan		
Dart Bank	Loomis, Ewert, Parsley, Davis & Gotting, P.C.		
DeLau Fire & Safety, Inc.	Louis Padnos I & M Co.		
DeWitt Charter Township	Maurer's Textile		
Dewpoint	Michigan High School Athletic Association		
Doty Mechanical, Inc.	Michigan Optometric Association		
Duckett Brothers Distributing	MP Social		
EDL Energy	MSU Federal Credit Union (MSUFCU)		
Ele's Place	Newkirk Electric		
Financial Technology, Inc.	Northfork Estate		
Foster Swift Collins & Smith, P.C.	Patrick McPharlin		
Gallagher, Flintoff & Klein, PLC	PFCU		
Gibson Insurance	Pleune Service Company		
Glenmoor Condominiums Association	Plumbers & Pipefitters Local Union 333		
Gongwer News Service Michigan			
Granger Waste Services			



From financial security  
to a helping hand, the  
**EXPERIENCE  
MATTERS.**

Find a local agent who can  
protect what matters to you.

 **FARM BUREAU  
INSURANCE®**  **Company**

[FarmBureauInsurance.com](http://FarmBureauInsurance.com)

## New Members

### **AIS Construction Equipment**

(517) 321-8000

[aisequip.com](http://aisequip.com)

3600 N. Grand River Ave.

Lansing, MI 48906

### **BJ's Wholesale Club**

(517) 622-8180

[bjs.com](http://bjs.com)

825 N. Marketplace Blvd.

Lansing, MI 48917

### **Cintas Corporation**

(517) 507-3344

[cintas.com](http://cintas.com)

3524 S. Canal Road

Lansing, MI 48917

### **Curvaceous Lingerie**

(517) 881-8466

[curvaceouslingerie.com](http://curvaceouslingerie.com)

513 E. Cesar E. Chavez Ave.

Lansing, MI 48906

### **eShop Michigan**

(517) 420-1942

[eshopmichigan.com](http://eshopmichigan.com)

P.O. Box 368

Mason, MI 48854

### **HAP**

(248) 443-1161

[hap.org](http://hap.org)

2850 W. Grand Blvd.

Detroit, MI 48202

### **Richardson & Richardson Consulting, LLC**

(517) 881-1060

[randr.consulting](http://randr.consulting)

6720 English Oak Drive

East Lansing, MI 48823

### **Spare Time**

**Entertainment**

**Center and Escapology**

**Lansing**

(517) 337-2695

[sparetimelansing.com](http://sparetimelansing.com)

3101 E. Grand River Ave.

Lansing, MI 48912

### **Specialty Eye Institute**

(877) 852-8463

[specialtyeyeinstitute.com/about/retina-center-jackson-michigan](http://specialtyeyeinstitute.com/about/retina-center-jackson-michigan)

850 West North St., Suite 104

Jackson, MI 49202

### **United Hospitality Group East Lansing, LLC**

(517) 763-2033

1100 Trowbridge Road

East Lansing, MI 48823

## Chamber Milestones

### **Capital Region International Airport**

50 Years

### **Student Book Store, Inc.**

50 Years

### **517 Magazine**

35 Years

### **Beggars Banquet**

30 Years

### **Capital Region Community Foundation**

30 Years

### **Capital Honda**

20 Years

### **Dowding Industries**

15 Years

### **Capital Steel & Wire, Inc.**

10 Years

### **Lansing Regional Sister Cities Commission**

10 Years

### **Providence Consulting**

10 Years

### **Superior Services RSH, Inc.**

10 Years

### **HTA Companies**

5 Years

### **Lake State Landscaping & Snow Removal LLC**

5 Years

### **RetroDuck.com, Inc.**

5 Years

### **Ronald McDonald House of Mid-Michigan**

5 Years

We'd like to offer a special salute to these great organizations who reached milestone anniversaries as Lansing Regional Chamber of Commerce (LRCC) members this month. Thank you for your continued support throughout the years!

LRCC members have unparalleled access to company and staff profiles on the LRCC website. To access and update this information at any point, visit [lansingchamber.org](http://lansingchamber.org) and enter your username and password. If you have not yet logged onto the site, please follow the simple password reset instructions.

**Call (517) 487-6340 with any questions.**

## Maner Costerisan Named ‘Best Firms to Work For’ by *Accounting Today*

By: Elizabeth Yassick, Kolt Communications Inc.



**M**aner Costerisan, a Lansing-based certified public accounting and business advisory firm, has been recognized with three of their industry's most prestigious awards. In 2021, the firm was named one of *Accounting Today's* Best Firms to Work For and selected as one of the nation's top-10 Best Firms for Young Accountants. Additionally, Maner Costerisan was one of five Michigan-based firms named in *Accounting Today's* list of top regional firms.



Williams

When Maner Costerisan was founded 115 years ago, it focused on compliance-based work, such as taxes and auditing. Today, they offer many services, including strategic planning and wealth management. Throughout the years, Maner Costerisan has adapted to serve the needs of their clients, which attributes to their longevity and has always been committed to delivering the best possible service to their clients across a wide range of industries.

“When you’re around for 115 years, you’re doing things for the long-run,” said Trey Williams, president of Maner Costerisan. “It’s not all short-run profits.”

This mindset not only applies to clients but employees as well. Maner Costerisan has been recognized as one of the Best Firms to Work For in the last six years. This is primarily due to the work culture, which encourages employees to challenge themselves and hold each other accountable.

“We are very proud of the awards we have won, but what we do every day is what leads to that,” said Williams. “Giving people flexibility and keeping it fun is important, but we never lose sight of accountability. We try to reinforce that so everyone understands expectations.”

Maner Costerisan's mission is to enable others to reach their potential. This mission is carried out through the consulting work they do with clients and the experience given to employees, particularly entry-level employees.



Maner Costerisan's annual Spirit Week is a week-long celebration featuring themed dress-up days, staff celebrations and fun activities.



On the first Thursday of every November, Maner closes its doors for the afternoon and sends team members to volunteer with nonprofits making a difference in communities across Michigan.

Many workers start with little to no experience, but Maner Costerisan is where new hires can learn necessary skills that help them excel.

“You last this long if you take care of your people,” said Williams. “If you’re being engaging and listening to them, it’s amazing the level of service you can achieve. We always want to allow our employees to thrive.” ●



# Enspired Solutions Works to Eliminate Pressing Environmental Issue

By: Celine Kerik, Kolt Communications

**P**oly- and perfluoroalkyl substances, also known as PFAS, have recently become a dominant topic of conversation when discussing pressing issues of the environment.

PFAS are a group of synthetic chemicals that have been used in firefighting foams, lubricants, food packaging, and many household items for over 60 years. They can remain in the environment for years. They can cause liver damage, decreased fertility, cancer, and other health problems to those who have high exposure to chemicals.

A Laingsburg firm hopes to become a world leader in solving the PFAS problem. Denise Kay Ph.D., and Meng Wang Ph.D., MBA, P.E., co-founders of Enspired Solutions, are looking to remove PFAS from the environment by destroying it in water through commercializing technology and equipment. This technology would work at PFAS contaminated sites throughout the Midwest and the U.S. The goal is to become the dominant supplier of PFAS destruction technology and equipment internationally.

“We both were seeing this happening, having conversations about it, and started working on how this problem could be solved,” said Kay. “We decided we were so passionate about working on what is definitely emerging to be a global issue that we decided to leave our career positions and start Enspired Solutions.”

After founding Enspired Solutions, Kay and Wang were aware that they would need to have a laboratory to improve the chemistry and how it might work at scale and offer testing on contaminated water from client sites. That’s when they reached out to Spartan Innovations.



Spartan Innovations is part of the Michigan State University Foundation and drives venture creation. It helps entrepreneurs to start businesses, develop business plans, and help technologies commercialize before the company is formed, and after the company is formed, to create a highly successful business.

“I started talking with Denise Kay and we figured out pretty quickly that there’s a lot of things that we can learn from each other,” says Brad Fingland, the director of Spartan Innovations. “We’ve been in regular communication about a corporate strategy and next steps. I also helped sponsor an entrepreneur in residence, which is something that we do for companies in our portfolio in our family.”

Kay says that after being a tenant in one of Spartan Innovations’ buildings, her relationship with the foundation has blossomed. They have provided Enspired Solutions with a lab setup and very flexible opportunities to rent the space that suits their startup’s needs. She is thankful that Spartan Innovations finds value in supporting a women-owned business.

“I had a very distinct experience of working for a company that had a female CEO, and the difference that made in the culture of the company had a very significant impact on me, the way I worked, and the enjoyment I had in work,” said Kay. “I have two daughters who are interested in STEM, and I really do think it’s important to be setting the model and give other growing women the opportunity I had that was so distinct in my career.” ●

## Civil Rights Icon Ernest Green Speaks to Economic Club

Since he and eight fellow high school students led the fight to integrate Central High School in Little Rock, Arkansas, Ernest Green is regularly asked why he was willing to be part of what became known as the “Little Rock Nine.” Green said he was angered by false impressions created suggesting that slaves in the south had been happy with their lot in life. He was also greatly bothered by what he said was inequity in classroom resources for black students who had to use hand-me-downs from white schools.

“I saw it as important to fight back,” said Green. “I had to seize the opportunity.”



Green made his comments before the Lansing Economic Club on Feb. 1. Elaine Hardy, director for diversity equity and inclusion, City of East Lansing and chair of the Dr. Martin Luther King Commission of Mid-Michigan, moderated the program.

Green was the oldest of the Little Rock Nine and the only high school senior in the group. The students entered Central High School on the morning of Sept. 25, 1957, with an escort of paratroopers. President Dwight D. Eisenhower, for the first time since Reconstruction, sent in federal troops to protect the rights of the beleaguered students, and the students ultimately prevailed. Green told the Economic Club audience that he persevered through the ordeal despite a lack of certainty that he would be allowed to graduate.

“The only way we were going to change Jim Crow was to have people of color advocate that change,” said Green.

Green told the Lansing Economic Club crowd that he sees parallels between today’s society and when he was part of the “Little Rock Nine.” He notes the current debate over critical race theory in schools and efforts in many local school districts around the country to ban certain books from the curriculum, are moves he feels will backfire on the organizers.

“The harder people try to push that sort of thing the more other people are going to ask; ‘what are you trying to keep people from knowing,’” said Green.

Ernest Green went on to study at Michigan State University and graduated with a B.A. in 1962 and M.A. in 1964. He went on to direct the A. Phillip Randolph Education Fund, served

as assistant secretary in the Labor Department under President Jimmy Carter and later worked in the private sector for consulting firms. He was a partner for Green and Herman, owned E. Green Associates and has been with Lehman Brothers since 1985. ●

**Banking  
Decisions.  
Made Locally.**

Discover why  
local matters.

  
**FIRST NATIONAL BANK**  
*of Michigan*

 Member  
**FDIC**

**fnbmichigan.com**  
COMMERCIAL | PERSONAL



The **Xavier DeGroat Autism Foundation** held a ribbon-cutting ceremony on Feb. 4 to celebrate the grand opening of the nation's first Autism History Museum. Founder and CEO Xavier DeGroat spearheaded the museum project, which is in the Meridian Mall in Okemos. The grand opening was part of an evening of activities to support the Foundation and recognize community leaders for their leadership, mentorship and philanthropy. The museum features a timeline of the history of autism and a sensory-friendly educational program. The museum also highlights the success of many people who live on the autism spectrum.



Daniel Rials, member relations manager for the Lansing Regional Chamber of Commerce, visited the **Lansing Community College (LCC)** Business and Community Institute and LCC West Campus at 5708 Cornerstone Drive in Lansing. "I was impressed with the scope and quality of available programs at the LCC West Campus. Several programs are the top-ranked programs in Michigan and even ranked No. 1 in the country."

**It's time for a NEWyou.**

Wendy lost 138 pounds



***"I have so much more energy and I'm enjoying life to the fullest now."***

~ Wendy ~

Wendy tried everything. She was 320 pounds and didn't have the energy to participate in outings with her family. Then she turned to bariatric surgery. After surgery and a customized plan that included food she liked and fit her lifestyle, Wendy is off of medication, has less anxiety and is sleeping better.

***"I wake up in the morning feeling like I have energy to tackle the day now."***

**Register for a free virtual seminar now!**

[stjoeshealth.org/bariatrics](http://stjoeshealth.org/bariatrics) • 517-545-6011

**BeRemarkable.**  
A Member of Trinity Health

# Lansing Regional Chamber of Commerce Announces Promotions of Key Executives

The Lansing Regional Chamber of Commerce (LRCC) has announced the following executive promotions: Steve Japinga to senior vice president of public affairs and Ashley Sandborn to vice president of marketing and communications. The promotions reflect Japinga and Sandborn’s leadership in collaborating with a variety of stakeholders in the region in the public policy arena and the vital role of communications plays in supporting LRCC initiatives.

“The Lansing Regional Chamber has always been very active in providing leadership in public policy and communications,” said Tim Daman. “However, we have seen a significant increase in demand for support in these areas, particularly during the Covid pandemic. The promotions of Steve Japinga and Ashley Sandborn not only reflect the outstanding work they have done, but we are now better able to position their talents in supporting our regional business community.”

In his new role, Japinga will continue to lead the LRCC’s public policy, advocacy and the LRC-PAC. Additionally, Steve will work closely with the LRCC’s marketing/communications and membership teams with an external focus on growing our regional partnerships, supporting the needs of our business community and members as well as strengthening the LRCC.

“Our role as leaders in the public policy arena has never been more important than it is today, especially as we look forward to a vitally important election year at the federal, state, and local level,” said Japinga. “I am excited to work with our many stakeholders throughout the tri-county region as we advance our policy priorities and work to help elect candidates who share our vision for the future of the region.”

In her new role, Sandborn will provide leadership, management and implementation of the LRCC’s branding, marketing, digital media, communications, and public relations strategy while working closely with the organization’s member engagement and public policy efforts. In addition, the position will shape, develop and implement strategies that effectively communicate the LRCC’s regional leadership position to numerous stakeholders.

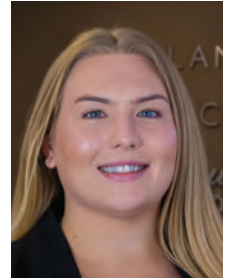
“I have always considered it an honor to support the Lansing Regional Chamber of Commerce’s mission, communicate our initiatives and highlight the work of our members,” said Sandborn. “We have been able to grow our communications exponentially over the past couple of years, including our social media platforms,



Japinga



Sandborn



Teribery

e-communications and FOCUS Magazine. I am so excited about the possibilities to move all of our communications efforts to exciting new levels in the future.”

The LRCC has also announced the promotion of Kelsey Teribery to marketing manager. Kelsey started at the LRCC in January 2020 as the social media and marketing coordinator. In her new role, she will manage the LRCC’s communication calendar and engage members and the region through the LRCC’s social media platforms. She will also assist the vice president of marketing and communications in creating marketing materials and managing marketing campaigns.

“I am humbled to step into a new role at the Lansing Regional Chamber,” said Teribery. “I look forward to continuing to showcase our incredible members and ensure local businesses have the tools they need to connect, grow and thrive in the Greater Lansing region.” ●

## Chamber Events

*Your Connection to Professional Development and Networking Success*

From professional development to networking, the Lansing Regional Chamber of Commerce hosts events to fit every need.

A full list of events is located on the Chamber Calendar on the LRCC website.



HOMETOWN  
DISCOUNT

25% OFF  
FOR LIFE

ON QUALIFYING NEW LINES

We're excited to be your new hometown network, so we're bringing you an exclusive offer. With our Essentials plan, you'll pay just \$22.50/line for four lines with unlimited talk, text and data for the life of your plan.

With AutoPay; plus taxes & fees.

T-Mobile™

Find your neighborhood T-Mobile store at [T-Mobile.com/store-locator](https://www.t-mobile.com/store-locator)

Limited time offer; subject to change. Discount on lines activated at participating retail stores during promotional period only. Qualifying new account & Essentials, Magenta, MAX, or Business Unlimited voice plan required. Max 12 lines on qualifying plans. Plus taxes and fees for Essentials & Business Unlimited (6+ lines); monthly Regulatory Programs (RPF) & Telco Recovery Fee (TRF) totaling \$3.18 per voice line (\$0.60 for RPF & \$2.58 for TRF) applies; taxes/fees approx. 4-38% of bill. Allow 2 bill cycles for discount to appear; applied after any AutoPay discount. \$5 more per line w/out AutoPay. Discount will stop if you cancel any voice lines. May not be combined with some offers and discounts. Credit approval, deposit, and \$30 assisted or upgrade support charge may be required. Unlimited while on our network. During congestion, heavy data users (>50GB/mo. for most plans) and customers choosing lower-prioritized plans may notice lower speeds than other customers; see plan for details. Video typically streams on smartphone/tablet at DVD quality (480p), unless you choose HD plan or feature. Tethering at max 3G speeds, unless you choose a plan with high-speed allotment. For full plan details, see rep or visit [T-Mobile.com/cell-phone-plans](https://www.t-mobile.com/cell-phone-plans). Network Management: Service may be slowed, suspended, terminated, or restricted for misuse, abnormal use, interference with our network or ability to provide quality service to other users, or significant roaming. See [T-Mobile.com/OpenInternet](https://www.t-mobile.com/OpenInternet) for details. See Terms and Conditions (including arbitration provision) at [www.t-mobile.com](https://www.t-mobile.com) for additional information. T-Mobile, the T logo, Magenta and the magenta color are registered trademarks of Deutsche Telekom AG. © 2021 T-Mobile USA, Inc.

## Longtime Community Advocate Joan Jackson Johnson Passes Away

**J**oan Jackson Johnson, longtime community advocate and former director of Lansing’s Human Relations and Community Services Department, passed away on Jan. 29 at the age of 73.

Known as “Triple J,” Jackson Johnson was passionate in her advocacy for the vulnerable population in the community and focused on housing and food insecurity in the region. She made it a habit to drive around Lansing to assist those facing a night of sleeping on the streets.

“Joan Jackson Johnson served those most in need for many years, helped so many people, and left a terrific legacy of service in Lansing,” the City of Lansing posted on Facebook. “On behalf of Mayor Andy Schor and the City of Lansing, we all offer our condolences and prayers to Dr. Jackson Johnson’s family.”

Joan did not seek recognition for her life of dedicated community services. However, recognition has often come her way through the years. Among the many honors she has received are Mother Seaton Service Award, KFC Family of the Year, Advent House Volunteer of the Year, State of Michigan Volunteer Family of the Year, Father MAC (Lansing Diocese) Award for Community Service, Modern Woodman Community Service Award and the NAACP Citizen of the Year Award.

Triple J was also honored by the Lansing Regional Chamber of Commerce (LRCC) in 2016 with the ATHENA Leadership Award.



“I can’t solve all the problems, but what I can do is educate, reach out and look at things that need to change so that all of our brothers and sisters are protected,” said Jackson Johnson upon learning she had received the ATHENA Award.

“We have lost a true community jewel with the passing of Joan Jackson Johnson,” said Tim Daman, president & CEO, LRCC. “Joan was a tireless advocate for the less fortunate in our community. Her servant heart and passionate advocacy were unlimited for the vulnerable population she loved dearly. At the Lansing Regional Chamber, we were proud to recognize her with the ATHENA Leadership Award, a tribute she richly deserved many times over. Her passing leaves a huge void with her family, her many friends and throughout the community she loved and served.” ●



## OPEN NEW DOORS THIS YEAR

Finance your home with CASE Credit Union, and we’ll be with you every step of the way.

Contact us today to learn more about getting a mortgage through CASE Credit Union!

**CASECU.org • 517.393.7710**

Federally Insured by NCUA
Equal Opportunity Lender
NMLS# 402568



# 2022 ATHENA Leadership Award and 2023 ATHENAPowerLink Award Nominations Open

The ATHENA Leadership Award was created in 1982 by Martha Mertz, former president of the Lansing Regional Chamber of Commerce (LRCC). It is presented to individuals who demonstrate the qualities embodied in the ATHENA Leadership Model, have achieved the highest level of professional excellence, contributes time and energy to improve the quality of life for others in the community, and actively assists others, particularly women, in realizing their full leadership potential. Michelle Massey of TechSmith was the 2021 ATHENA Leadership Award honoree.

Do you know an exceptional leader in the #LoveLansing community? Nominate them on the LRCC website by Friday, Sept. 23 at <https://bit.ly/3kxLbWk>.



Michelle Massey of TechSmith was the 2021 ATHENA Leadership Award honoree.



Tobi Lyon of Ngage Management is the 2022 ATHENAPowerLink recipient.

The LRCC is also encouraging applications for the 2023 ATHENAPowerLink (APL) program. APL is a national mentoring program that connects selected women business owners with a skilled advisory panel, which helps the business owner achieve networking, capital, operational and strategic goals. The program will also

enhance the business owner's leadership and management skills for future business endeavors. Tobi Lyon of Ngage Management is the 2022 APL honoree.

The application deadline is Friday, April 15. The application is available on the [LRCC website](#).

*Love Lansing*  
MEET LIKE A LOCAL

The GLCVB's role is to market the Capital Region as a travel destination and our vision is to inspire visitors and residents alike to love Lansing as much as we do. We understand what makes this community great. Work with us to host your next meeting or event and together we can grow the local economy while showcasing our hometown pride. Contact us today!

**Greater Lansing Michigan**  
CONVENTION & VISITORS BUREAU  
LANSING.org  
(517) 487-0077  
#LOVELANSING

# GM EXPANSION IN GR

**F**or over a century, the Greater Lansing region and General Motors (GM) have enjoyed a partnership that has served as the foundation of regional growth and prosperity. Like a long marriage, the GM/Lansing relationship has enjoyed many highs and been forced to overcome numerous challenges.

As the automotive industry faces a significant transition to a future of primarily electric vehicles (EV), leaders in Greater Lansing and the state of Michigan sought to gain a foothold as a leader in the EV revolution. Those efforts culminated in a major victory on Jan. 25 when GM announced it would invest more than \$7 billion across four manufacturing sites, including a \$2.6 billion EV battery factory adjacent to the GM Lansing Delta Township Assembly plant.

"GM's \$7 billion investment in Michigan – the largest in their history – will create and retain 5,000 good-paying jobs and enable us to build on our legacy as the place that put the world on wheels," said Governor Gretchen Whitmer. "When it comes to investing in Michigan, GM and I have the same philosophy: 'Everybody In.' Michigan's future is bright, and I will continue paying jobs, and empower working families."

"We are taking the next step in our continuous work to establish GM's EV leadership by making investments in our vertically integrated battery production in the U.S., and our North American EV production capacity," said Mary Barra,

GM chair and CEO. "These important investments would not have been possible without the strong support from the Governor, Michigan Legislature, Orion Township, the City of Lansing, Delta Township, as well as our collaboration with the UAW and LG Energy Solution. These investments also create opportunities in Michigan to bring our employees along on our transition to an all-electric future."

Through its joint venture with LG Energy Solution, GM also plans to construct its third U.S. Ultium high-volume battery cell manufacturing facility in Delta Township. The facility will include a cleanroom environment, machinery



Whitmer



# ANDS ITS FOOTPRINT → GREATER LANSING



Schor



Fletcher

and equipment that will allow for the high-volume output necessary to produce cells at this capacity. The project is expected to generate a total capital investment of \$2.6 billion and create 1,700 jobs.

The GM battery plant is the single largest economic development project in the history of the Greater Lansing region three times over.

"This truly is a great day for the Greater Lansing region," said Tim Daman, president and CEO, Lansing Regional Chamber of Commerce. "The construction of this battery plant will not only create new jobs and investment in our region, but it also secures our long-term future relationship with General Motors. It will firmly establish our region's world leadership position in the next-generation electric vehicle revolution."



Daman

"This investment represents a major commitment to Lansing and our incredible workforce," said Lansing Mayor Andy Schor. "By building these electric vehicle batteries here and further investing hundreds of millions into upgrades at our two assembly facilities, GM is telling the world to take a look at our region. This is truly historic, and we have to take advantage of every opportunity that can grow out of this investment."



## STATE AND LOCAL LEADERS STEP UP TO THE PLATE

To clear the way for the GM announcement, state and local governments approved a series of incentives. The Michigan Strategic Fund approved a \$600 million Critical Industry Program grant, an 18-year Renewable Energy Zone, which will require an investment of up to \$2.5 billion and a \$66.1 million Strategic Site Readiness grant awarded to the Lansing Economic Area Partnership (LEAP) for public infrastructure and utility upgrades.



Trezise

"LEAP has been proud to lead regional efforts around this pivotal historic moment for Michigan and the Lansing region. We collectively thank Ultium and its investing partners for choosing the Lansing region and Michigan over other location options, and acknowledge the crucial personal leadership of Governor Gretchen Whitmer and MEDC CEO Quentin Messer, our state legislature and

the outstanding leadership of Lansing Mayor Schor, Delta Township Supervisor Ken Fletcher and BWL CEO Dick Peffley," said Bob Trezise, president and CEO of LEAP. "This project represents a secure future for our region and state in making electric-powered vehicles, batteries and systems, along with potential semiconductor/chip-making and other high technology-related companies and suppliers that will



# GM EXPANDS ITS FOOTPRINT IN GREATER LANSING

follow the core EV and battery investments to build the future of mobility."

The Michigan Economic Development Corporation (MEDC) also authorized a State Education Tax abatement with the locally approved Orion Township abatement in support of the GM expansion.

"This project will create new opportunities for businesses of all sizes across the state to ensure that Michigan retains its strong supplier network and provide a platform for further investment throughout Michigan. GM's decision underscores the strength of the workforce within our state's automotive sector and the bipartisan Team Michigan commitment to winning the future of mobility and EV manufacturing here in Michigan," said Quentin Messer Jr., CEO of MEDC CEO and president and chair of the Michigan Strategic Fund. We appreciate GM's continued vote of confidence in Michigan and their partnership on this historic economic win for our friends and neighbors and are encouraged by the economic opportunity impact it will have across our state for decades to come."

Locally, Lansing has unanimously approved a Renewable Energy Renaissance Zone and PA 198 agreement. Lansing and Delta Township also unanimously passed an extended 425 revenue sharing agreement for the plant for 25 years. The Lansing Board of Water and Light's Board of Commissioners also unanimously passed a special electric rate for Ultium. Additionally, in order to construct the new assembly plant, Delta Township and the Lansing Board of Water and Light will extensively and rapidly expand infrastructure capacity in support of the site.

"I think this is as strong a testament as you can have to the power of regional collaboration," said Trezise. "When we unify together there is

nothing we can't compete with from around the world."

LEAP spearheaded an intense series of meetings involving Mayor Schor, Delta Township Supervisor Ken Fletcher and Lansing Board of Water and Light General Manager Richard Peffley. The group met every four days during November and December and negotiated a GM package.

"The collaboration was vital. It really took a team effort to pull this off," said Delta Township Supervisor Ken Fletcher. "We got together, figured out what needed to be done and made it happen. It was a real pleasure to work with Mayor Schor, LEAP, MEDC and the other stakeholders."

Trezise said he was concerned about whether ordinarily fractious state government would be able to come together and agree upon a package of incentives needed to complete the deal, something that eventually did happen.

"I honestly didn't know if state government had it in it anymore to come together, and yet they did," said Trezise. "Look what they can accomplish when they come together, a democratic governor and republican controlled legislature. MEDC and its CEO Quentin Messer played a very profound role. The Governor was very hands-on and it all came together."

State lawmakers were also actively involved in collaborative efforts to land the GM efforts. Members of the Lansing region's Capitol Caucus were instrumental in the adoption of a bipartisan package of bills creating incentives to land significant jobs and investment projects, including those in EV/battery and semiconductor industries.

"It was an honor to work on this project and to vote yes on it," said Rep. Angela Witwer (D-Lansing), whose district includes Delta Township where the new plant will be located.

**THE GM BATTERY PLANT IS THE SINGLE LARGEST ECONOMIC DEVELOPMENT PROJECT IN THE HISTORY OF THE GREATER LANSING REGION THREE TIMES OVER.**



Messer



Horn



Hertel



Hollister



Reuss



Barra

“This project supports our communities, supporting jobs and our kid’s future and the future of our state.”

“This is the spark, the turnaround for Michigan,” said Sen. Ken Horn, chair of the Senate Economic and Small Business Development Committee. “We are at a precipice here in Michigan. The combustion engine will soon go the way of the coal plant. What do we do then in terms of manufacturing? Who will we be? This investment by GM means that the world is looking at Michigan as a manufacturer for automobiles.”



GM also announced it is investing more than \$510 million in its two Lansing-area vehicle assembly plants, Lansing Grand River (LGR) and Lansing Delta Township (LDT) to upgrade their production capabilities for near term products. LGR currently produces the Chevrolet Camaro and Cadillac CT4 and CT5. LDT produces the Chevrolet Traverse, Buick Enclave, and GMC Acadia Limited.

The more than \$3 billion in new GM investments will also lead to extensive spin-off investments in additional manufacturing and supporting existing businesses in the region. State Senator Curtis Hertel says that not only will the GM investments bring new jobs, but it also means the region and state get to keep current GM jobs, noting that having the battery plant will eventually lead to electric vehicles being built locally instead of going to other states. Senator Hertel says all those jobs lead to more business for local restaurants and retail stores. That also means more families with kids in schools and increased housing values.

“There is an initial investment by GM, which is important,” said Sen. Hertel. “When you start looking beyond that at all the ancillary investments in our local community, it is a huge win for Michigan because it is going to build the jobs of tomorrow and protect the jobs we already have.”

“The secondary market will be nearly as big as the factory



Witwer



Fletcher

themselves. Manufacturers that make the parts for the factories will be located here,” said Rep. Witwer. “We’ll also see a strengthening of our restaurants and retail stores. With 2,000 new jobs, businesses in the immediate areas surrounding the plant will benefit and that will extend into places like Benton Township, Potterville and Dimondale.”



The collaboration model between all the stakeholders involved in GM’s big move first emerged 25 years ago when the region nearly lost GM. The company informed Lansing Mayor David Hollister that it had no plans for production once its current model line-up was phased out. Hollister, the Lansing Regional Chamber of Commerce and numerous other state and local entities joined together to form the Keep GM Taskforce, which successfully secured a future with the auto giant. Not only did GM keep and invest in upgrades at its existing facility in downtown Lansing, it also built the new Lansing Delta Township plant. Hollister says the plan and the Keep GM effort anticipated another plant being added to the mix in future years.



# GM EXPANDS ITS FOOTPRINT IN GREATER LANSING



“We assembled 800 acres for the Delta Township plant and there was additional land attached that we added at the same time,” said Hollister. “We had the land, we zoned the entire 1,500 acres, and we built the infrastructure. Essentially all you had to do was change the dates, update the deal points and you’re done.”

Hollister also credits a working, viable coalition of local leaders, including the Chamber, Delta Township Supervisor Joe Drolett and labor leaders. He says going forward the region will have to up its game because competition from other communities around the country is getting tougher.

“We have become the focal point for battery technology and electric cars,” said Hollister. “This is transformational for the region. Our future is unlimited if we keep our regional focus.”

“This incredible investment, and the jobs it will create, is truly historic for our city. Lansing’s automotive history started in 1896 when Ransom Olds built his first “horseless carriage,” said Mayor Schor. “One hundred years later, Mayor David Hollister led the successful effort to “Keep GM.” Today, I am proud to continue this proud tradition and welcome the newest investment by General Motors in the future of automobiles right here in Lansing. Thank you to all our partners and GM for this massive investment in our future.”

“Without the collaboration we had in the late 90s and early 2000s with the Keep GM Blue Ribbon Committee, we are probably not here in 2022 celebrating this significant investment from GM,” said Daman.



## STAKING OUT A LEADERSHIP POSITION

The GM investments move Michigan and the region to the head of the pack in the EV revolution. These developments also secure Michigan's/GM long-term future together.

“Michigan will be the recognized hub and leader of innovation in the U.S. for EV R&D and manufacturing,” said Mark Reuss, president of GM.

“It is my sincere goal to add one million people to our population in Michigan,” said Sen Horn. “We lost a million people between 2005 and 2015. We need to get them back. When people migrate here from around the country, they will bring their talent. We also need to keep the population we have here at the same time. The GM announcement was a great kickoff for a bright future for Michigan.”

“I’ve been told that auto companies will not transport batteries a long distance,” said Fletcher. “Having a battery plant close by plus the additional \$500 million GM is investing in the two existing assembly plants shows their intent to keep utilizing the facilities in this region for the long-term.”

“This shows that the Lansing region is a strong player in the future of the automotive industry,” said Mayor Schor. “The skilled workforce that will grow out of a major battery manufacturing facility can certainly help entice other businesses and investments to come here and build their products knowing that our region has the talent and drive they need.”

“The GM investments demonstrate a much longer-term commitment over the foreseeable future,” said Daman. “They certainly see something here with the facilities they have, workforce, local economy and infrastructure that is in place here. This bodes well in anchoring our manufacturing sector for the next two to three decades.”

“The moral of the story is when and if we can all come together and put aside politics, we can still do enormous good for people,” said Trezise. “We can move the needle and we have demonstrated to the whole world that the state of Michigan and the Lansing region are very significant players in the global arena for the future technologies of an economy.” ⚡

# Martin Property Management



LEASE MANAGEMENT



VENDOR OVERSIGHT



MAINTENANCE & GROUNDS



TENANT RELATIONS



CAPITAL IMPROVEMENT PLANNING



ROBUST FINANCIAL REPORTING

## Landlord and Owners - Martin Does It All!

Contact Us / 517 351-2200

[martincommercial.com](http://martincommercial.com)



“They treated me, not just my cancer.”

– Beth W.



More people trust Sparrow than any other healthcare system in Mid-Michigan for our highly skilled doctors. Sparrow is made up of highly skilled experts. From our state-of-the-art cancer and heart centers to our many primary and urgent care locations throughout the area, no one else offers the skill and dedication that we do.

To make an appointment, visit [Sparrow.org](http://Sparrow.org)



# Diversity Star Award to Recognize Regional DEI Champions

## LANSING REGIONAL CHAMBER AND LEAP ANNOUNCE MAJOR COMMUNITY AWARD TO BE PRESENTED ANNUALLY AT LRCC ANNUAL DINNER

The Lansing Regional Chamber of Commerce (LRCC) and the Lansing Economic Area Partnership (LEAP) have joined forces to create a new award honoring organizations that champion diversity, equity and inclusion (DEI) in the workplace and the Lansing regional community. The Diversity Star Award honors companies and organizations within the Lansing region that demonstrate a solid commitment to advancing equity and creating inclusive environments, champion efforts for diversity and equitable practices in the workplace and beyond, support underserved and underrepresented employees and communities and contribute to a more just and equitable region.



Award applications for the Diversity Star Award will be accepted electronically on the Lansing Regional Chamber of Commerce website from Tuesday, Feb. 1 through Thursday, March 31. Up to three supplemental documents can be submitted with the award application. All businesses in the tri-county region (Ingham, Clinton and Eaton counties) are eligible for this award. Nomination review criteria and additional information for applicants is available on the Lansing Chamber website: [www.lansingchamber.org/signature-events](http://www.lansingchamber.org/signature-events).

“Organizations of all sizes in our region have recognized the critical importance of living out a commitment to DEI from both a business and moral standpoint,” said Tim Daman, president & CEO, LRCC. “The Greater Lansing region is an established leader in advancing diversity and inclusion, which is creating stronger organizations and a more vibrant community. The Diversity Star Award will be an annual opportunity to celebrate the best of the best for their efforts in diversity, equity and inclusion.”

The LRCC and LEAP will present two annual Diversity Star Awards at the LRCC Annual Dinner: one for small businesses (100 employees or less) and one for large businesses (101 employees or greater). Award applicants must demonstrate how DEI has been successfully developed in the company culture and business operations and will be evaluated on their external efforts to collaborate with area initiatives to improve and recognize diversity in the Lansing region.

“Top talent knows no demographic boundaries. We know that the most prosperous communities are those that welcome and embrace the diversity of people, thoughts and beliefs—this is the secret sauce in creating a great sense of place with an educated/skilled workforce,” said Tony Willis, chief equity development officer, LEAP. “It takes intentionality and continuous effort to create a welcoming and inclusive environment; this award acknowledges businesses in our community that are putting in the effort to do just that.”

**OPEN**

New ideas make us strong. Listening and learning inspire and broaden our creativity.

**LET'S TELL YOUR STORY.**

Storytelling Creative Services MessageMakers.com

# Lansing Regional Chamber of Commerce Announces Participants for First DEI Executive Roundtable Program

**T**he Lansing Regional Chamber of Commerce (LRCC) has announced the participants in its first Diversity, Equity and Inclusion (DEI) Executive Roundtable.

The program will provide CEOs, senior business leaders and small business owners a confidential space to share advice and learn best practices, equity tools and approaches to strengthening DEI within their organizations. This program has been designed to equip business leaders with the skills required to successfully navigate areas of uncertainty and have transformational success through a DEI lens.

“Executive roles continue to evolve in an increasingly volatile environment, where business models continually change across industries,” said Tim Daman, president & CEO, LRCC. “This program has been designed to equip business leaders with the skill sets required to successfully navigate these areas of uncertainty and position executives to have transformational success through a DEI lens.”

The DEI Executive Roundtable is a 12-month program designed to prepare leaders to implement social change within their organizations, enhance their role as inclusive leaders, and provide substantial business growth and success tools. Some of the DEI Executive Roundtable leadership training series of topics include core DEI and cultural concepts, addressing inequalities and shaping business practices, building an effective business equity framework, implementing a people-first DEI strategy and framework, and recruitment, retention and rethinking DEI in the workforce.

Dr. Tonya Bailey, founder of TCB Consulting, Inc., and chief diversity officer at Lansing Community College, will serve as the facilitator of the DEI Executive Roundtable.

LRCC members were invited to submit applications and letters indicating their interest in the program. The first DEI Executive Roundtable will take place on March 31. ●

## SELECTED PARTICIPANTS INCLUDE:

**Mallory DePrekel,**  
Communities In Schools of Michigan

**Cindy Kangas,** Capital Area Manufacturing Council

**Brian Philson,**  
Highfields, Inc.

**Susan Gisholt,** Delta Dental of Michigan

**Feliz Rodriguez,** Community Mental Health - CEI

**Julie Pingston,** Greater Lansing Convention & Visitors Bureau

**Wendy Hamilton,**  
TechSmith

**Laurie Van Egeren,**  
Michigan State University

**Kelli Ellsworth Etchison,**  
LAFCU

**Smiljana Williams,**  
Lansing Board of Water & Light

**Silvia Dimma,** MSU Federal Credit Union

**Lolo Robison,** Capital Area Transportation Authority

**Teresa Znidarsic,**  
Sparrow Health System

**Tim Daman,**  
Lansing Regional Chamber of Commerce

We make it our business to help you with yours.



At Blue Cross, we understand finding the right health care coverage for your employees can be no simple task. Which is why we make it easier on them — and you. We do it by giving them the personal attention your employees deserve and the help they need to make smart choices when it comes to enrollment and finding the right health care. Our robust data helps provide actionable insights to maximize benefit value for your employees while minimizing costs for you. It all adds up to smarter, better health care. See what Blue Cross can do for your business.

Learn more at [bcbsm.com/employers](https://bcbsm.com/employers)

# Amy Scoby of Christman Company to Lead 2022 LRCC Policy Committee

**A**my Scoby of The Christman Company has been elected to serve as the chair of the 2022 Lansing Regional Chamber of Commerce (LRCC) Policy Committee. Scoby succeeds Matt Resch of Resch Strategies who has served as chair since 2015. Resch is the new chair-elect of the LRCC Board of Directors. Scoby is also serving on the LRCC Board of Directors as division director for government relations.

In her role at Christman, Scoby is the senior vice president providing corporate leadership for Christman’s marketing, business development and government relations activities. FOCUS Magazine talked to Scoby about the upcoming year for the LRCC Policy Committee.

**FOCUS: How does the policy committee serve the LRCC and its members?**

**Scoby:** The policy committee is a dedicated group of Lansing Regional Chamber members who develop recommendations to the board of directors regarding legislative challenges and opportunities in the region. We are focused on guiding and advancing the LRCC’s policy priorities and ensuring that the Lansing region is a place where people and businesses can thrive.

**FOCUS: How did the committee establish its priorities for 2022?**

**Scoby:** As a committee, we always monitor the evolving business environment here in the Lansing region. To establish this year’s priorities, we looked at how well we did at moving things forward in 2021 and considered the LRCC membership survey results regarding the needs being identified for the coming year. The Lansing Regional Chamber public affairs department also is accommodating in providing current and emerging policy analysis. This information was helpful in establishing the recommended priorities for 2022.

**FOCUS: What are the policy priorities the committee will focus on this year?**

**Scoby:** For 2022, we established three areas for proactive focus and three reactive areas. In terms of the proactive focus, the first was creating and maintaining a strong, inclusive economic development, and an environment for high-quality job creation and investment, including quality of life, safety, and the like. Second is around talent and education. We want to enhance the Lansing region’s talent pipeline and education, including K-12, higher education and the professional trades. The third area focuses on infrastructure investment. We want to be a magnet and work regionally to maximize infrastructure investment, including roads, bridges, transit and telecom.

On the reactive side, we will focus on ensuring we have an environment where businesses want to open, relocate, and expand. We also want to keep an eye on government regulation, affordable housing and health care accessibility and affordability.

**FOCUS: Are there two to three specific initiatives that you see as being a particular emphasis in 2022?**

**Scoby:** Absolutely, the first is downtown Lansing. It’s time to breathe new life into our downtown and advocate for policies and efforts that reduce vacancies, support our small businesses and new business incubator opportunities. We need to get our fair share of funds available through the state budget process and American Rescue Fund dollars and ensure that those dollars are going to projects and initiatives with the highest ROI for the region.

We also want to focus on notable findings that were in the State of the Lansing Region Benchmarking Report. The report lists areas of strengths and opportunities. We want to leverage that information and focus on moving critical initiatives forward. ●

## 2022 LRCC POLICY COMMITTEE MEMBERS

- Amy Scoby**, chair, The Christman Company
- Matt Resch**, Resch Strategies
- Bill Kimble**, C2AE
- Joe Ford**, Netvantage Marketing
- Scott Ammon**, Ammon Meyer Pence Group, Merrill Lynch
- John Shaski**, Sparrow Health System
- Rebecca Bahar-Cook**, Capital Fundraising Associates
- Ben Bakken**, Tri-Star Trust Bank
- Ben Miller**, Comcast
- Jim Hunsanger**, MSUFUCU
- Becky O’Connell**, Lake Trust Credit Union
- John Truscott**, Truscott Rossman
- Doug Mains**, Honigman LLP
- Charles Hauser**, Granger Waste Service
- Ernest Tisdale**, EDUstaff
- Kevin McKinney**, McKinney and Associates
- Monique Field-Foster**, Warner Norcross + Judd LLP
- Jamie White**, White Law
- Jeff Smith**, MSU Foundation

*If you are interested in learning more about the work of the LRCC Policy Committee or serving as a member, contact Steve Japinga at [sjapinga@lansingchamber.org](mailto:sjapinga@lansingchamber.org)*



# LAND ANYWHERE

#FlyLansing for business  
or leisure travel



American Airlines 

 DELTA

 APPLE VACATIONS

[flylansing.com](https://flylansing.com)



ACCOUNTING AND ADVISORY EXPERTS

**One smart business  
decision that leads  
to countless more.**

## **Every business starts with a vision and boundless potential.**

But, between keeping up with regulations, staying ahead of the competition, and finding and retaining top talent, balancing your day-to-day challenges and long-term goals has never been more difficult. That's where Maner Costerisan makes a difference. Our advisory solutions deliver strategic support that makes your business stronger today, while helping get you where you want to be.

**Talk to an expert today at 517-323-7500**



[manercpa.com](https://manercpa.com)

© 2021 Maner Costerisan. All rights reserved.

 **Maner  
Costerisan**



## Redevelopment of Malcolm X’s Former Elementary School to Create New Commercial, Residential Space

Ferguson Development has been working diligently with residents, stakeholders, and city leadership on a proposed new construction plan to redevelop the vacant property at the intersection of Pleasant Grove and West Holmes Road in Southwest Lansing. This project serves as an anchor to stimulate both community and economic redevelopment in this area and beyond. It is their intention to uphold the legacy and vision of social and economic equality inspired by Malcolm X, who attended the former Pleasant Grove Elementary School as a child.

The objective is to revitalize a crucial and historically underserved neighborhood within Lansing.

Collaboration from residents, business owners, and other grassroots stakeholders have helped identify socio-economic and health services desired most by the community, creating a central hub for local programming to reach those who need it most.

“This is where I lived when I first got married,” said Joel Ferguson, principal at Ferguson Development, LLC. “I really believe we can make a statement in this community and get people to realize that this project is more than just a redevelopment of an abandoned school, it is about creating an environment that will attract new residents, new business, and new investment in Southwest Lansing.”

The redevelopment plan comprises the construction of two buildings. Building 1 will be a two-story commercial building with an estimated 27,445 rentable square feet of finished office/financial/institutional/medical space. Building 2 will be a two-story multi-family building with an estimated 19,380 rentable square feet of 30 residential apartments. The start of construction, beginning with demolition, is anticipated to begin by summer 2022 with an estimated completion of summer 2024.

“Development throughout our city is crucial, and my administration has prioritized corridor and neighborhood

development in Southwest Lansing, said Lansing Mayor Andy Schor. “This new development at the Pleasant Grove school will be the newest part of the incredible investments and growth in the Pleasant Grove and Holmes neighborhood of focus. My economic development team and I worked hard on this project with the developers, and this investment will reduce blight in Southwest Lansing, while also providing housing and jobs for existing and new residents to Lansing.” ●

# NEEDHAM SOLUTIONS

**Full-Service Marketing, Design, Promotional, & Technology Solutions - Because You 'Need 'em'!**

616-737-1173 | [Info@NeedhamSolutions.com](mailto:Info@NeedhamSolutions.com)  
[www.NeedhamSolutions.com](http://www.NeedhamSolutions.com)

Veteran-Spouse & Women-Owned/Operated

<b>MARKETING</b>	BRANDING STRATEGY	EMAIL MARKETING & AUTOMATION
	SEO	SOCIAL MEDIA MANAGEMENT
		COPYWRITING/CONTENT DEV
<b>DESIGN</b>	GRAPHIC DESIGN	LOGO DESIGN
	WEBSITE / ECOMMERCE DESIGN	
	PHOTO/VIDEO EDITING	BUSINESS STATIONERY
	SALES/MARKETING COLLATERAL	UX/UI DESIGN
<b>PROMOTIONS</b>	PROMOTIONAL PRODUCTS	SIGNAGE
	SWAG/GIVEAWAYS	PRINTING SERVICES
	TRADESHOW DISPLAYS	AWARDS DIRECT MAIL
<b>TECHNOLOGY</b>	MARSOL ALL-IN-ONE MARKETING PLATFORM	
	WEB HOSTING	EMAIL ACCOUNTS
	DOMAIN NAMES	CONTENT CREATION TOOLS
		DATABASE MANAGEMENT

Headquartered in Mason, MI. Serving Clients Nationwide.

# Communities In Schools Affiliates Announces Transformative Investment to Help Students Overcome Obstacles to Learning

## \$133.5 MILLION DONATION WILL DEEPEN ORGANIZATION'S IMPACT IN SCHOOLS ACROSS THE COUNTRY AND MICHIGAN

**C**ommunities In Schools of Michigan and Communities In Schools of Northwest Michigan, two local affiliates of the national organization, are recipients of a large donation from MacKenzie Scott. CIS works to ensure every student, regardless of race, zip code, or history of marginalization, has what they need to succeed in school and beyond.

This transformative \$133.5 million donation from philanthropist MacKenzie Scott to the Communities In Schools Network and National Office will be distributed across 40 affiliates of the 110 organizations in the CIS Network.



work ahead, and the public and private partnership that must remain true.

"We currently serve over 30,000 thousand students in Michigan, and we have added more school district partners to our reach for 2023. Between the two affiliates, these funds will assist CIS with our plans for sustainability as we expand to serve over 45,000 students next year in Michigan," said Mallory DePrekel, executive director of Communities In Schools of Michigan.

State Representative Sarah Anthony said, "I am thrilled to lend my congratulations to Communities In Schools Michigan on receiving this historic private investment in their work. When our students seem to be facing their heaviest burdens yet, we need strong partners like Communities in Schools who are willing to do the work on the ground in our classrooms to help kids re-engage and keep them on the path to success. This organization will play a key role in our collective response to the learning loss and mental health implications of the COVID-19 pandemic. I am proud to see this level of community buy-in and I am excited to see the ripple effect for students across Michigan."



In a time when the global pandemic has created unparalleled challenges for students and families, including experiences of social isolation, economic crisis, stress, and trauma, this investment will help CIS of Michigan and CIS of Northwest Michigan carry out their cause to build sustainable systems of support for the students and families that would otherwise be left behind. An investment in CIS to use its evidenced-based model to help students overcome obstacles to learning are tremendous financial backing for impact, infrastructure, and the people working inside schools. However, it does not change the reality of the continued

CIS believes that transformative relationships are key to unlocking a student's potential. Their school-based staff works inside schools in partnership with teachers and parents to help address the non-academic needs of students. CIS coordinates with schools and local service providers to meet the needs of students and families and provide critical resources, like food, housing, healthcare, counseling, access to remote technology, and more so that students (and educators) can focus on academics. By identifying the points of challenge for students in their personal lives, CIS staff helps to empower students to move beyond the barriers they face in the school building and community. ●

# Capital Area United Way Receives \$10,000 Grant from United Way Worldwide’s COVID-19 Community Response and Recovery Fund

## CAPITAL AREA UNITED WAY ANNOUNCED A \$10,000 GRANT AWARD FROM UNITED WAY WORLDWIDE’S COVID-19 COMMUNITY RESPONSE AND RECOVERY FUND

This grant was awarded to 175 United Ways across the United States and is intended to increase internal capacity and crisis response preparedness, including critical areas such as business continuity planning, IT infrastructure, data security and digital communication platforms.



the COVID-19 pandemic, such as the additional Child Tax Credit, the Child and Dependent Care Credit, and the Earned Income Tax Credit. UWW Grants such as this one that focuses on the tools needed to create long-term digital infrastructure prepares CAUW for serving our community and allows us to be more responsive when providing community residents access to tax preparation services.”

To date, Capital Area United Way (CAUW) has provided \$369,124 in support to the community in response to the impact of COVID-19 and will use the grant funds to provide greater access for volunteers to stay engaged, trained, and volunteering no matter where they are in the Lansing area.

“Capital Area United Way is grateful to have the additional support to increase its capacity to provide Volunteer Income Tax Assistance services,” said Teresa Kmetz, president and CEO, Capital Area United Way. “This will help provide our community’s ALICE families access to the many expanded tax credits related to

United Way Worldwide established the COVID-19 Community Response and Recovery Fund in 2020 to meet the unprecedented human services needs that appeared simultaneously in communities worldwide because of the pandemic and the resulting economic fallout. To date, \$57.3 million has been raised and distributed to more than 650 Local United Ways to serve immediate needs in their communities, impacting more than 20 million lives. To learn more about Capital Area United Way or to give, advocate or volunteer, please visit: [www.micauw.org](http://www.micauw.org).



Relax. Enjoy your event, **live or virtual**. We’ve got this.

Grand Rapids ♦ Lansing ♦ Detroit  
Promo Code: LFCS0806

[www.chasecreative.com](http://www.chasecreative.com)



**NEW HIRES**



Greenburg



Magil



Chan



Ingbretson

**Cinnaire** ushered in the new year by announcing five appointments to its lending and underwriting teams. These industry leaders will support the organization's growth as a community development lender and equity investor funding affordable housing developments. **Sarah Greenberg** joined Cinnaire as senior vice president, underwriting (Debt), in the organization's Madison, Wisconsin office. **Sabrina Iga** has joined as senior vice president, finance, in the organization's Wilmington, Delaware office. **Elaine Magil** recently joined Cinnaire's Wilmington team as senior vice president of underwriting (Equity). **Larry Chan** has joined Cinnaire's Wilmington team as an equity underwriter, supporting Cinnaire's Low Income Housing Tax Credit investing cross its nine-state footprint. **Erik Ingbretson** has been appointed as portfolio manager, community development, in Cinnaire's Chicago, Illinois office.

**Loomis, Ewert, Parsley, Davis & Gotting P.C.** is pleased to announce that **Michael R. Kluck** has joined the firm as an Of Counsel member with over 45 years' experience representing both public and private employers on a wide variety of labor



Kluck



Klingenberg

and employment law matters before state and federal courts. Mike has argued cases before the Michigan Court of Appeals and the Michigan Supreme Court on various public sector labor law issues.

**Union Bank** has announced the addition of **Sarah Klingenberg**, vice president, risk officer. In her new role, Klingenberg will be responsible for the implementation and administration of all aspects of the Bank Secrecy Act Compliance Program, Enterprise Risk Management Program and overall bank security. Klingenberg joins the organization with over 23 years of diverse experience in the banking industry in West Michigan. She has a true understanding of the banking needs for the communities Union Bank serves.



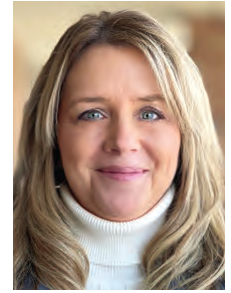
Miller

As a graduate of **Mason Public Schools (MPS)**, **Jessica Miller** has recently returned to the district in the role of director of community education. Since she joined MPS, Miller has hit the ground running to build out additional community education offerings throughout the community. She has stepped into this role after the retirement of **Mary Kay Gavitt**. Upon graduating from Mason High School in 2000, Miller attended Adrian College, where she received her bachelor's degree in English and elementary education.

Additionally, she studied abroad at Oxford University.



Fuller



Keefer

**Ngage Management** is pleased to welcome **Laura Fuller, CMP** and **Lisa Keefer** as new team members. They both serve as association directors. Fuller brings more than 25 years of association experience to her position. Her extensive background includes expertise in board governance, accredited education, and membership recruitment and retention. Keefer's background consists of expertise in finance, and board, committee, and event management. She brings two decades of professional experience to the team and the client organizations she serves.



Novetske

**Union Bank** has announced the addition of **Jon Novetske**, mortgage banker. In his new role, Novetske will work with current and prospective customers in the Greater Lansing Area to gain a clear understanding of their lending needs in order to find the right personalized solutions, every time. To best serve the community, he will be working at the Unions Banks' Dimondale location.

Cooperstown, New York native and former Oakland Athletics bullpen catcher **Phil Pohl** will become the 17th manager in **Lansing Lugnuts** team history, helming the Lugnuts' 2022 staff. The 31-year-old manager will be joined by returning pitching

coach **Don Schulze**, returning hitting coach **Javier Godard** and a trio of newcomers in assistant hitting coach **Craig Conklin**, head athletic trainer **Jacob Routhier** and sport performance coach **Kevin Guild**. The Lugnuts will open 2022 unofficially on Wednesday, April 6, playing the Michigan State Spartans in the Crosstown Showdown, before opening the High-A Central season at Jackson® Field™ against the Lake County Captains on Friday, April 8.

**EXIT Great Lakes Realty** is pleased to announce that **Jasper Stertzbach** and **Bobbie Ledesma** have joined its growing team of dedicated real estate sales professionals. EXIT Great Lakes Realty, located at 115 W. Lawrence Ave., in Charlotte, Michigan, is a proud member of EXIT Realty Upper Midwest's rapidly expanding network of independently owned and operated brokerages across the region.

**Kyle A. Clark** joins **Triterra** as the director of industrial hygiene, working out of the Grand Rapids office. Clark holds a bachelor's degree in biology with a concentration in environmental health and safety from Central Michigan University. **Kathleen Christnagel** joins as an



Clark



Christnagel



Bowen

environmental scientist, working as a part of the due diligence team. Christnagel holds a bachelor's degree in biology from Alma College.

**Alexis Bowen** joins as an environmental scientist, working as a part of the due diligence team. Bowen holds a bachelor's degree in geoscience from Tennessee Tech University.

## AWARDS

**Origami Rehabilitation** would like to congratulate this year's Annual Peer Nominated Award recipients. The creativity, leadership, innovation, and care these individuals bring to their roles are

unmatched. The awards include Business Operations – **Amanda Carr**, Client Care – **DuWayna Downey**, Client Support – **Deborah DeLong**, Clinical Excellence – **Anna Keough**, and Employee of the Year – **Tammy Hannah**.

## DISTINCTIONS

**Dickinson Wright PLLC** is pleased to announce that it has received a score of 100 on the Human Rights Campaign Foundation's 2022 Corporate Equality Index, the nation's foremost benchmarking survey and report measuring corporate policies and practices related to LGBTQ+ workplace equality. Dickinson Wright's efforts in satisfying all of the CEI's criteria also earn the Firm the designation as one of the *Best Places to Work for LGBTQ+ Equality*.

**Sparrow Carson Hospital** is proud to recognize **Karmen Bussell, RN**, and **Patrick Kane, RN**, as its Caregivers of the Quarter. Bussell and Kane were nominated for their quick efforts in life-saving patient care by helping a patient having a stroke receive urgent care in the Sparrow Carson Emergency Department. The team provided the patient with excellent care without any delays. The incident

# 3 RULES FOR SUCCESSFUL COMMERCIAL REAL ESTATE INVESTMENTS

We're here to help you with all three. And beyond.

**We're NAI Mid-Michigan. Your best choice for commercial real estate.**

naimidmichigan.com • 517.487.9222



happened when a woman ran into the hospital yelling that her husband was having a stroke at a nearby home. Bussell and Kane ran to the house with a wheelchair and found the patient on the floor, lifted him into the wheelchair, and brought him to the emergency department.

## PROMOTIONS

**The Christman Company** has announced the promotion of leaders at the construction management and real estate development firm's corporate headquarters in Lansing, Michigan. The promotions and new titles include **Sean Jagels**, vice president, project planning; **John O'Toole**, senior vice president, healthcare services; **Anthony Pecchio**, senior vice president; **Chad Ross**, vice president, finance; **Amy (Baumer) Scoby**, senior vice president, marketing and business development; and **Don Staley**, senior vice president and corporate safety director. Jagels, who joined Christman in 2014, is Leadership in Energy and Environmental Design Accredited Professional Building Design and Construction (LEED AP BD+C) certified. O'Toole, who joined Christman in 2002, is a Leadership in Energy and Environmental Design Accredited Professional (LEED AP) and earned a Bachelor of Science in construction management, industrial technology from Eastern Michigan University. Pecchio, who joined the firm in 1997, serves Christman and the Christman Capital Development Company. Ross, who joined Christman in 2014, is a licensed CPA in Michigan and Certified Construction Industry Financial Professional (CCIFP). Scoby, who joined Christman in 2012, develops relationships and strategic partnerships to ensure client satisfaction, cultivate markets and enhance the company's visibility in the marketplace. Staley, who joined Christman in 1996, confirms the company's award-

winning safety programs continue to keep the bar high in the industry.



Carrillo

**Chaz Carrillo** joined the **David Chapman Agency** at the end of 2019, and in just two short years has become one of the fastest agents to reach profit-sharing status in company history. His rapid success can be attributed to his unwavering professionalism, expertise and commitment to his clients. With the frequent changes in Michigan auto reform (PIP) law over the past couple years, Chaz always ensures he's up-to-date so he can counsel his clients accordingly.



Lilly

**Michael Lilly** has been selected as executive director of information technology services (ITS) at **Ingham Intermediate School District (ISD)**. In this role, he will oversee all information technology components not only for Ingham ISD, but the local districts the ITS department serves as well. Lilly will replace Daryl Tilley, who will be retiring at the end of February after 14 years of service. Lilly has been with Ingham ISD for over 20 years, most recently serving as director of information technology services.

**MSU Federal Credit Union (MSUFCU)** has been named on GoBankingRates' 100 Best Banks and Credit Unions of 2022 List. GoBankingRates analyzed a variety of financial institutions based on nine factors including number of branch locations, fees, APYs, products and services offered, and others, to provide consumers

with 100 of the best banks and credit unions to choose from. GoBankingRates is a publication that focuses on personal finance, and is "inspiring and empowering [their] audience to live richer..." through their vast amount of content.

## BOARD OF DIRECTORS & EXECUTIVE COMMITTEE UPDATES



Perry



Kellogg



Gallagher

The shareholders of **Fraser Trebilcock**, one of Michigan's long-established full-service law firms, have re-elected **Michael H. Perry** as president of the firm. This is Perry's fifth consecutive year as president. Shareholder **Mark E. Kellogg** was re-elected to the board of directors, where he will serve as vice president & treasurer. Shareholder **Brian T. Gallagher** was elected to the board of directors, where he will serve as secretary.

**Eaton RESA** invites members of School Boards of Education in Eaton County to come together three times per year for the Eaton County Area School Board Association. On Jan. 25, **Athena Antonis**, assistant director of government relations from the Michigan Association of Superintendents and Administrators (MASA) provided a legislative update and participated in a discussion with board members. Antonis was also joined by **Matthew Schueller** who

has recently stepped into the role of director of government relations for MASA.



Sudderth

The **McLaren Greater Lansing Foundation** welcomed **Ruthanne Sudderth** as the newest member to the foundation board of trustees and established

the 2022 board leadership for what promises to be a busy year of bringing the highest quality of health care to the region. Sudderth is the senior vice president of public affairs and communication for the Michigan Health & Hospital Association, where she has worked for more than 13 years leading communications, coverage expansion, vaccination work and health care workforce development efforts.



Murshak



Lawrence

**Loomis, Ewert, Parsley, Davis & Gotting, P.C.** is pleased to announce that **Mikhail Murshak** and **Gabrielle Lawrence** have been elected as shareholders of the Lansing-based firm. Mikhail specializes in general intellectual property counseling including patent and trademark strategy and acquisition. Mikhail is a registered patent attorney with the USPTO, a member of the State Bar of Michigan, and the Ingham County Bar Association. Gabrielle specializes in probate, estate planning, and trust and probate administration, family law, and has helped clients navigate

the ever-changing areas of federal estate taxes and Medicaid eligibility. Gabrielle is a member of the State Bar of Michigan, State Bar of Georgia, American Bar Association, and Ingham County Bar Association.

January was School Board Recognition Month. During January, **Mason Public Schools** recognized those individuals who approach their volunteer work like it is a full-time job and with extraordinary dedication to public schools. They are citizens whose decisions affect our children and build our community. Those serving Mason Public Schools and their years of service are: **Kurt Creamer** – 9 years; **Liz Evans** – 5 years; **Christopher Mumby** – 5 years; **Michael Kelly** – 3 years; **Patrick O'Connor** – 3 years; **Steve Duane** – 2 years and **Matt Hall** – 1 year.

Noted business, higher education, and medical leaders have been appointed to the Boards of Directors of various boards that govern **Sparrow Health System** and its subsidiaries. **Kelly Preston**, president of Capital Steel and Wire, has joined the board that governs the entire health system. Joining the Sparrow Hospital Board are: **Jeanette Wrona Klemczak, MSN, BSN, RN, FAAN**, healthcare workforce consultant, Lansing Community College; **LaKeeya Tucker, D.O.**, Sparrow Hospital Medical Chief of Staff and physician, Alliance OB/GYN. **Wael Salman, M.D.**, an internal medicine physician with Owosso Medical Associates, has joined the board of Sparrow Care Network.

A trio of leaders have become members of the **Sparrow Women's Board of Managers**. The new members are **Vicki Belloli**, volunteer and past president of the Sparrow Hospital Guild; **Cheryl Benjamin**, certified travel ambassador, retired state of Michigan Human Resources; **Daphne Hobson, CPA**, retired

audit manager, State of Michigan – Internal Audit Services Division.

A host of community leaders have also joined the board of the **Sparrow Foundation**. New members are **Deborah Allen**, president-elect, Sparrow Women's Board of Managers; **Monique Field-Foster**, attorney, Warner Norcross & Judd, LLP; **Melissa Herbert**, former VP, Support Services, Neogen Corp; **Wayne Lynn**, director, Electric Transmission & Distribution, Lansing Board of Water and Light; and **Michael McLeod, M.D.**, surgeon, MSU Surgery, and Sparrow Hospital Medical Chief of Staff-Elect.

**Eaton RESA** joined 537 local and 56 intermediate school districts across Michigan to celebrate January as School Board Recognition Month. The men and women serving on the Eaton RESA Board of Education are: **Max Baxter**, president from Charlotte; **Debbie Roberts**, vice president from Eaton Rapids; **Jack Temsey**, secretary from Potterville; **Mark Rushford**, treasurer from Maple Valley and **Denise DuFort**, trustee from Grand Ledge.

## PEOPLE NEWS



Keough

**Origami Rehabilitation** would like to congratulate occupational therapist Anna Keough on her recent certifications; Dementia Care Certified

Specialist and Interactive Metronome Certified. Anna currently serves on the advisory board for the Brain Injury Association of Michigan's Lansing chapter and was recently recognized with an award for clinical excellence by her Origami peers. Anna's commitment to positive client outcomes shines through in all she does.





**MICHIGAN  
PREMIER EVENTS**

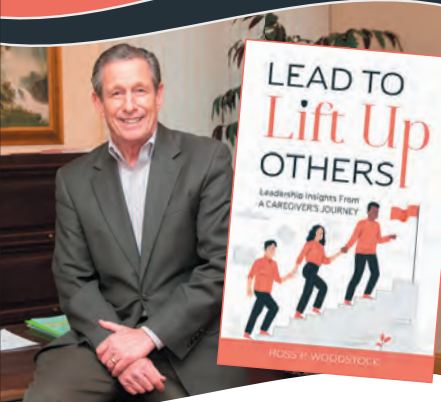
Association, Corporate & Government  
Events Management Company

CONTACT US TODAY!

[www.MichiganPremierEvents.com](http://www.MichiganPremierEvents.com)




A Leadership  
Book with a  
**TWIST**



**Author: Ross Woodstock**  
Executive Coach and  
Leadership Consultant

Available on Amazon



## COMPANY NEWS



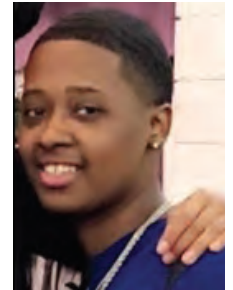
Throughout the year, **PFCU** employees volunteer to participate in jeans days to raise funds for charities. The monies collected are donated each quarter to a charity chosen by PFCU staff. The most recent recipient is the *Jacob's Ladder Foundation of Portland*. PFCU employees have proudly donated \$7,228 to *Jacob's Ladder*, which exists to provide practical help to families in the community who are impacted by miscarriage, stillbirth or infant loss. Pat & Carolyn Heckman founded *Jacob's Ladder Foundation* in their son Jacob's memory. Their hope is that Jacob's passing will provide an opportunity to serve the community of Portland by helping families heal from the death of their children by establishing and maintaining a communal place of burial. *Jacob's Ladder Foundation* provides a burial place, at no cost, in Portland City Cemetery for families who suffer miscarriage, stillbirth and infant loss.

**Martin Commercial Properties**, a leading privately-owned real estate services and development company, facilitated the sale of a freestanding, single-story building at 2260 Jolly Oak Road in Okemos, Michigan. Located in a desirable mixed-used corridor, the property will be the new home for BBK Fine Jewelry, transforming the former PNC Bank branch location into a purveyor of diamonds and custom-designed jewelry. The property was sold by PNC Bank to BBK Fine Jewelry who requested rezoning from professional office to retail. The request is pending with Meridian Township. Funding for the building sale was provided by Capital

National Bank. Constructed in 1991, the 3,932-square-foot building features offices, and a three-lane drive through. The building is situated on 5.41 acres.



Attari



Lawrence

**Lansing Community College (LCC)** held its Coalition for College and Career Readiness (C3R) Summit on Jan. 27. The C3R Summit focused on the Michigan Reconnect Program, which provides tuition assistance for Michigan residents over the age of 25 to return to school. Speakers included the Michigan Department of Labor and Economic Opportunity's **Ava Attari** and LCC student **Mariah Lawrence**, who is attending LCC through the Michigan Reconnect Program. Panelists at the Summit included LCC's Academic Success Coach **Erin Matesich** and Interim Associate Dean of Student Affairs **Mike McGinnis**. Also joining the panel were CEO of Capital Area Michigan Works! **Carrie Rosingana** and Michigan Reconnect Navigator at the Michigan Department of Labor and Economic Opportunity **Allen Chung**.

The **Greater Lansing Convention and Visitors Bureau** is proud to announce its 2022 board officers: **Cindy Bowen, CHA, CTA**, chair - Crowne Plaza Lansing West; **Marcus Kirkpatrick**, vice-chair - Delta Charter Township Parks & Recreation; **Kellie Dean**, secretary/treasurer - Dean Transportation/Dean Trailways; **Eric Sudol, CTA**, past-chair - East Lansing Marriott at University Place; **Kenric Hall, CTA** - Radisson Hotel Lansing at the Capitol; **Dorothy E. Maxwell, MPA, CTA** - Max Weingar Group; **Tyler Parsons** - Lansing Lugnuts;

**Tracie Kent, CTA** - Residence Inn by Marriott & TownePlace Suites - East Lansing; **Rebecca Selesky** - Residential and Hospitality Services, MSU and **Derrell Slaughter** - Ingham County Commissioner.

**Martin Commercial Properties** facilitated the sale of a mid-century style office and warehouse building at 1400 Keystone Ave., in Lansing to an investment group led by a local investor. The property was sold by The Polack Corporation—Michigan's oldest office equipment dealer founded in 1931 and recently acquired by Applied Imaging of Grand Rapids. The buyer of the 15,000-square-foot building plans to promote the space to industrial users in a tight real estate market.



**McLaren Greater Lansing** has recently acquired new minimally invasive equipment that will make spine surgeries more accurate and safer for people requiring surgery on their back or neck. The new navigation system not only makes surgery more precise for the patients, but it also makes surgery safer for the staff and exposes them to less radiation. Along with the BrainLab navigation system, McLaren also purchased an OHX microscope that is used specifically for surgical spine cases. The microscope is equipped with a camera that projects what the surgeon is seeing onto high-definition screens throughout the operating room. This allows the entire surgical team to be in sync with the surgeon for every second of the surgery.

Twenty-four entrepreneurs from across Clinton, Eaton, Ingham

and Shiawassee counties will continue building or growing their businesses as part of the fifth program of One and All, an inclusive entrepreneurship initiative created in 2020 by the **Lansing Economic Area Partnership** and generously funded by the **Michigan Economic Development Corporation** and **Consumers Energy Foundation**. The One and All initiative's success across its first four programs has culminated in the creation of 51 jobs and an average annual participant household income increase of more than \$3,000. Of the initiative's 75 graduates thus far, 83% have legally formed their business, and several have opened brick and mortar storefronts.



Barlow

**MSU Federal Credit Union (MSUFCU)** announced a name, image, and likeness (NIL) contract with **Nala Barlow**, MSU track and field student-athlete. The

Credit Union also partners with the 11 eligible MSU women's basketball players and is excited to expand its NIL brand ambassador partnership beyond women's basketball to include Nala. The Credit Union sees its partnership with the student-athletes as an opportunity to expand its support of women athletes and to recognize the value they bring to the university and the community.

**Martin Commercial Properties** demonstrated their depth of services by facilitating multiple transactions related to a five-suite office building at 2163 University Park Drive in Okemos. The leading privately-own real estate services and development company headquartered in East Lansing represented both the buyer and seller of the facility. Martin also reached an agreement to continue as the leasing agent and property manager. The 17,848-square-foot

building has four existing long-term tenants that include Securian Financial, Shinberg Insurance, the U.S. Social Security Administration and Verizon. All occupants share a large common area inside, as well as 83 freshly painted parking spaces.



Caregivers in one of **Sparrow Hospital's** COVID units were surprised when nursing leaders handed out 40+ homemade, personalized cards – complete with Starbucks gift cards – that were created by supporters in Washington. The outpouring was the brainchild of Nicole Anzia of Washington, who was touched by a CNN report in December featuring a visit to a Sparrow COVID unit and heartfelt interviews with their caregivers. Anzia reached out to a network of friends about doing something for the Sparrow team – they responded immediately with offers to send notes of thanks and encouragement.

**Highfields** is accepting applications for Aldinger Scholarships until Friday, March 18. Scholarships are awarded for up to \$1,500 to individuals who have received services or have a family member who has received services through Highfields. Qualified individuals include, but are not limited to, Reaching Higher students, Breakthrough course participants, family counseling clients, residential clients, and Ingham Academy students. Highfields will award several scholarships depending on the availability of funds. To apply for a scholarship, please submit an application to Deanna Tiffany at [dtiffany@highfields.org](mailto:dtiffany@highfields.org). The

application can be found at [www.highfields.org/resources](http://www.highfields.org/resources).

### Martin Commercial Properties

is pleased to announce that the Community Mental Health Authority of Clinton, Eaton, and Ingham Counties (CMHA-CEI) is expanding its services by leasing 20,000 square feet in the Corporate Centre office building, located at 5913 Executive Drive in Lansing. CMHA-CEI is currently located on Jolly Road and the space at Corporate Centre will be used in addition to the main headquarters building. Corporate Centre is the former corporate headquarters of Jackson Financial and is currently home to the regional operation of Enterprise Car Rental and FTC&H Engineers. Jackson Financial also maintains a presence in the building. Jackson Financial was represented by **Eric F. Rosekrans, CPM, CCIM**, senior vice president, office advisor.

**Colliers Lansing** has helped secure space in the Delta Crossings development for a Consumers Credit Union at the northwest corner of Marketplace Boulevard and West Saginaw Highway in Delta Township. Consumers Credit Union will join Delta Crossings along with BJ's Wholesale, @Home, Olive Garden and Texas Roadhouse, which are also planned for the mixed-use development at the former site of Kmart. Other retailers have already opened at the site.

**LAFCU** is accepting entries for its unique 2022 Write to Educate Essay Contest, which will award \$10,000 in college scholarships and \$2,000 in donations to charities in the names of the winners. Four high school seniors will each receive a \$2,500 scholarship to an accredited Michigan college or university. Each will also select a charity to receive a LAFCU donation of \$500. The entry

deadline is March 31. Winners will be selected based on their one-page essay that examines their experiences during the coronavirus pandemic. Other factors, such as academic grades and financial need, are not considered. Information is at [www.lafcu.com/writetoeducate](http://www.lafcu.com/writetoeducate) where entries can also be uploaded.

**MSUFCU** is proud to announce its foundation, the Desk Drawer Fund, donated \$453,143 to 104 organizations in 2021, and employees donated \$261,422 in 2021, \$61,000 more than the goal. Desk Drawer Fund recipients included nonprofits, organizations, and individuals within the foundation's five philanthropic pillars of arts & culture, stable housing, empowering youth, financial education and entrepreneurialism. In 2020, the Desk Drawer Fund distributed \$446,251 to 70 organizations and individuals. ●

# Grand Opening Specials

## \$500 Off

Mortgage Closing Costs<sup>1</sup>

## \$250 Cash

Checking with Direct Deposit<sup>2</sup>

## 0.50%

Rate Discount

RV, Boat, and Snowmobile Loans<sup>3</sup>

**Hurry! Offers end March 31, 2022.**

[msufcu.org/gospecials](http://msufcu.org/gospecials)



For more information on all offers, visit [msufcu.org/gospecials](http://msufcu.org/gospecials). <sup>1</sup>The \$500 off closing costs offer valid for new mortgages of \$150,000 or more. Offer cannot be used toward down payment or with any other discounts, and is not available on home equity loans or lines. All usual and customary fees will be charged to the buyer. Loans are subject to credit approval. Applications must be received by 3/31/22 and mortgage must close by 5/31/22. Eligible properties include primary and secondary residences, single-family homes, condominiums and modular homes. This offer may not be transferred, sold, or replicated in any way, and it may not be combined with any other mortgage offers. <sup>2</sup>Offer valid for new MSUFCU checking accounts with qualifying direct deposit. Current members without an existing checking account are eligible when opening a checking account with qualifying direct deposit. Must add qualifying direct deposit of at least \$200 weekly, \$1,000 biweekly, or \$2,167 monthly to MSUFCU checking account between 1/1/22 and 3/31/22. First qualifying direct deposit must be made by 4/30/22. Second qualifying direct deposit must be made by 5/31/22. MSUFCU Visa Debit Card must be activated by 3/31/22 and 10 debit card purchases must post within 30 days of activation. Must have at least a \$1,000 balance in MSUFCU Savings account on 3/31/22. \$250 will be deposited into member's new checking account within 5 weeks of meeting all qualifications. A qualifying direct deposit is a recurring electronic deposit of your net paycheck, pension, or government benefits such as Social Security from your employer or the government. Examples of non-qualifying transfers and deposits include P2P services like Venmo, PayPal, Square, or any transaction that is a refund or transfer from another financial services such as an investment transfer, college tuition refunds, and federal/state/municipal refunds. Not valid with any other deposit or checking offers. <sup>3</sup>RV/Boat/Snowmobile special loan discount valid 1/1/22 through 3/31/22. Actual rate will vary based on creditworthiness, term, amount financed, and age of vehicle. Financing for qualified MSUFCU members, consumer accounts only. Discount cannot be combined with any other RV/Boat/Snowmobile offer or applied to existing MSUFCU RV/Boat/Snowmobile loans. Loan must be disbursed by 3/31/22 to receive discount. Federally insured by NCUA.

**msufcu**  
MSU FEDERAL CREDIT UNION



LANSING REGIONAL CHAMBER

The Stadium District  
500 East Michigan Ave., Suite 200 | Lansing, MI 48912  
517.487.6340 | lansingchamber.org

PRSRT STD  
U.S. POSTAGE  
**PAID**  
LANSING, MI  
PERMIT NO. 689

**Change Service Requested**



## Let's protect your business from check fraud.

Mercantile Bank wants to help protect you and your business. That's why we offer services that can detect fraudulent activity and help protect your business from the unexpected. To learn more about our full range of fraud protection services call our team or visit us online and let's get you protected.



Mercantile Bank®



**mercantile.com**  
**800.453.8700**