

Lansing Board of Water
and Light

FOCUS

THE MONTHLY BUSINESS NEWS MAGAZINE OF THE
LANSING REGIONAL CHAMBER OF COMMERCE

NOVEMBER 2021

McLaren Greater Lansing



Allen Neighborhood Center



High Caliber Karting &
Entertainment



Bekum America



The 16th Annual Celebration of Regional Growth Awards

IN THIS ISSUE

LEADERSHIP LANSING ANNOUNCES 2021-22 COHORT

BUILD HER UP: SUPPORTING LANSING'S
WOMEN IN RECOVERY

ATHENA WIN: EVENING OF EMPOWERMENT

2021 Board of Directors

Officers

Board Chair

Wendy Hamilton / TechSmith

Past Chair

Patrick Dean / Dean Transportation

Chair Elect

Mike Zamara / Niowave

Legal Counsel

Patricia Scott / Foster, Swift, Collins & Smith, P.C.

Treasurer

Luke Terry / Rehmann

President

Tim Daman / Lansing Regional Chamber of Commerce

Division Directors

Marketing and Communications

Lisa O'Connor / Publicom

Government Relations

Matt Resch / Resch Strategies

Member Services

Michelle Massey / TechSmith

Regional Initiatives

Kirk Ray / McLaren Greater Lansing

At Large

Tina Brumley / Auto-Owners Insurance

April Clobes / MSU Federal Credit Union

Jim Farrell / Dart Container

Roger Graff / Farm Bureau Insurance Co.

Glenn Granger / Granger Construction

Keith Granger / Granger Waste Services

David Lewis / AT&T Michigan

Darci Marcum / General Motors

Van Martin / Martin Commercial Properties

Jeff Metts / Dowding Industries

Ken Misiewicz / Pleune Service Company

Steve Quinlan / NEOGEN

Joe Ruth / Sparrow

Lisa Ellen Smith / InVerve Marketing

Todd Surline / Hiring Solutions

Dr. Kathleen Wilbur / Michigan State University

Kevin Zielke / AF Group

David Zyble / Jackson National Life Insurance

Board Partnerships

LEAP, Inc.

Bob Trezise / LEAP, Inc.

Lansing 5:01

Steve Hershfield / CBRE

ATHENA WIN

Jenn Sturdy / PNC Bank

Black Business Alliance of Greater Lansing

Dr. Alane Laws-Barker / Sparrow

Greater Lansing Hispanic Chamber of Commerce

Chaz Carillo / David Chapman Insurance Agency

FOCUS

Editor

Ashley Sandborn

Feature Writer

Ross Woodstock

Design

Tandem Studios

Cover Design

Tandem Studios



JOIN THE LEADERSHIP CIRCLE

Leadership Circle investors are proven business and community leaders. We value their commitment and applaud their efforts to strengthen our region with their leadership and appreciate the important role they play in advancing our organization.

Stay Connected. **Stay Social.**

facebook.com/LansingChamber

twitter.com/LansingChamber

[Lansing Regional Chamber of Commerce](https://www.youtube.com/LansingRegionalChamber)

[@LansingRegionalChamber](https://www.instagram.com/LansingRegionalChamber)

[Lansing Regional Chamber of Commerce](https://www.linkedin.com/company/LansingRegionalChamber)



LANSING REGIONAL CHAMBER
CONTENTS



— *on the cover*

**THE 16TH ANNUAL CELEBRATION
OF REGIONAL GROWTH AWARDS
INVESTMENTS TRANSFORMING
THE REGION**

MEMBER NEWS

- 08** Longtime Educator Cindy Anderson to Retire as Eaton RESA Superintendent
- 09** Martin Waymire Founders Retiring, New Owners Announced
- 10** Regional Firms Make Prestigious Inc. 5000 Magazine List
- 10** Pontiac Entrepreneur Brings Pro Basketball Team to Lansing
- 11** MessageMakers: Leading From the Screen
- 12** Burcham Hills Opens a New Door to Senior Living in Mid-Michigan

#LOVELANSING

- 16** Mid-Michigan Recovery Services Raises \$250,000 for Lansing's Women in Recovery

DIVERSITY AND INCLUSION

- 17** LRCC Launches Diversity, Equity and Inclusion Series

CHAMBER NEWS

- 18** LRCC Recognizes Four New School Superintendents at Executive Welcome Program
- 19** Hundreds Attend LRCC Grub Crawl to Celebrate and Support Downtown Lansing Restaurant Community

ECONOMIC CLUB

- 26** NEOGEN: Protecting the Global Supply Chain

FOCUS ON TALENT

- 27** ATHENA WIN: An Evening of Empowerment
- 28** LRCC Announces Its Newest Leadership Lansing Class
- 29** Resch Strategies Awards Leadership Lansing Scholarship to Big Brothers Big Sisters – Michigan Capital Region

ADVOCACY

- 30** State Budget Includes Investments in Talent, Workforce, Infrastructure and Childcare
- 31** Michigan Sees Strong Q2 Growth

monthly features

- 04** Message from the Chamber
- 05** Calendar of Events
- 06** Thank You Renewing Members
- 07** Welcome New Members
- 07** Member Milestones
- 14** Chamber in Action
- 32** Members on the Move

Celebration of Regional Growth

When the Lansing Regional Chamber of Commerce (LRCC) premiered the Celebration of Regional Growth (CORG) Awards 16 years ago, the state of our region was a vastly different than it is today. Michigan's economy was headed towards an economic slowdown. Many wondered if we would be able to sustain a CORG program. We are immensely proud of the fact that 16 years later, CORG has not only become one of our most important annual events, but we have also been able to recognize and celebrate businesses that have combined to invest more than \$4 billion and create and retain thousands of jobs in the Lansing region.

The five organizations being recognized this year capture the growth in our manufacturing sector to securing our energy future, redefining health care to repurposing retail store fronts, supporting entrepreneurs and addressing affordable housing options. They are symbolic of the transformational nature of the Greater Lansing economy. They are the Allen Neighborhood Center, Bekum America, High Caliber Karting & Entertainment, Lansing Board of Water and Light and McLaren Greater Lansing.

Allen Neighborhood Center is being recognized for its innovative Allen Place Project, a \$11 million transformation of an east side neighborhood in Lansing. Congratulations to Joan Nelson and her team for a project that will combine commercial space, an Accelerator Kitchen and Incubator to support entrepreneurs seeking to move into business for themselves, and affordable housing.

Bekum America has long been a national leader in the blow molding industry. Bekum's 45,000-square-foot expansion of its Williamston production facility and corporate headquarters also enhances future economic growth and workforce expansion. High Caliber Karting & Entertainment has helped rewrite the playbook on repurposing vacant commercial space in suburban shopping centers. When High Caliber Karting & Entertainment opened its indoor entertainment center in the Meridian Mall two years ago, it quickly became an attraction for family entertainment and corporate team-building retreats. Their recent \$2 million expansion has enhanced their status as one of the main anchors at the mall.

The Lansing Board of Water and Light's (BWL) \$500 million natural gas-fired plant in Delta Energy Park has positioned BWL as a leader in clean energy. It makes our municipality-owned utility the largest utility in the state to generate coal-free power by 2025. BWL is also to be commended for listening to its customers and incorporating their visions into the Delta Energy Park project.

When McLaren Greater Lansing opens its new 240-bed hospital on Lansing's south side in March 2022, it will usher in a new era in health care. The \$600 million state-of-the-art facility will not only enhance patient care, it will also usher in a new era of partnership with Michigan State University and the Karmanos Cancer Center. McLaren is to be commended for the inclusive nature of its planning process, integrating staff and community members at all levels of the process.

Sixteen years later, we not only continue the CORG Awards, but it is also clear that we will continue to have much to celebrate not only in 2021 but for years to come. ●



TIM DAMAN
PRESIDENT AND CEO
LANSING REGIONAL
CHAMBER OF COMMERCE



We are immensely proud of the fact that 16 years later, CORG has not only become one of our most important annual events, but we have also been able to recognize and celebrate businesses that have combined to invest more than \$4 billion and create and retain thousands of jobs in the Lansing region.

November 2021

11/2

NOVEMBER MEMBER MIXER
Tuesday, Nov. 2 from 4:30 to 6:30 p.m.
WIELAND
4162 English Oak Drive, Lansing

Join us on Nov. 2 for a Member Mixer hosted by our good friends at WIELAND, a construction company with national headquarters in Lansing and five offices nationwide. Enjoy first-rate networking in their beautiful LEED-certified building. Food and beverages will be provided along with desserts from Sweet Encounter Bakery, winner of the downtown Lansing Built to Last competition.

Cost: Free

11/4

**BUSINESS EDUCATION SERIES –
 MARKETING FOR SMALL TO
 MEDIUM BUSINESSES**
Thursday, Nov. 4 from 8 to 9:30 a.m.
LRCC Capital Insurance Board Room
500 E. Michigan Ave., Suite 200, Lansing

In this program, local PR, marketing and advertising maven Tiffany Dowling guides business professionals on the 2021 marketing trends and strategies needed to create brand awareness and increase sales.

Cost: Free

11/9

**LANSING ECONOMIC CLUB -
 CELEBRATION OF REGIONAL
 GROWTH AWARDS**
Tuesday, Nov. 9 from 11:30 a.m. to 1:30 p.m.
Kellogg Hotel & Conference Center
219 S. Harrison Road, Lansing

Sponsored by PNC and Loomis Law Firm, the Celebration of Regional Growth Awards recognizes businesses for their new economic investment and job creation in the Greater Lansing region. This year, the LRCC will recognize Bekum North America, Lansing Board of Water and Light, McLaren Greater Lansing, High Caliber Karting & Entertainment and Allen Neighborhood Center.

Cost: Complimentary for Lansing Economic Club members; \$75 for non-Lansing Economic Club members.

11/17

**Diversity, Equity & Inclusion:
 Reasonable Accommodation**
Wednesday, Nov. 17 from 10 to 11:30 a.m.
LRCC Capital Insurance Board Room
500 E. Michigan Ave., Suite 200, Lansing

During this program, participants are put into groups and given one of four roles: HR, training, production, and facilities, with each role having a written profile. The groups evaluate the potential issues for persons with six

specific disabilities and potential accommodations. Each group develops a plan for each disability.

Cost: \$75

December 2021

12/2

**2021 ATHENA LEADERSHIP AWARD
 LUNCHEON**
Tuesday, Dec. 2 from 11:30 a.m. to 1:30 p.m.
Kellogg Hotel & Conference Center
219 S. Harrison Road, East Lansing

Michelle Massey, vice president of community outreach and customer support at TechSmith, will be recognized Dec. 2 as the recipient of the 2021 ATHENA Leadership Award. The ATHENA Leadership Award is presented annually in over 500 communities internationally. It recognizes individuals for professional excellence, providing valuable service to the community and actively assisting women in attaining professional excellence and leadership skills.

Cost: \$55 for LRCC members; \$75 for non-LRCC members; \$425 for table of 8

Virtual Business Roundtables

Virtual roundtables allow community and government leaders an opportunity to share what is going on in the community and determine ways to advise the tri-county region.

Delta Township - Eaton County
 Wednesday, Nov. 3 from 9 to 10 a.m.

Lansing – Delhi Township
 Wednesday, Nov. 10 from 9 to 10 a.m.

East Lansing - Meridian Township
 Wednesday, Nov. 17 from 9 to 10 a.m.

The Lansing Regional Chamber of Commerce (LRCC) hosts numerous events monthly, from Member Mixers to Lansing Economic Club programs. The events and programming provide valuable content and information and give members unique opportunities to connect and network.

The LRCC encourages members to check their email, follow LRCC social media channels, and visit the [LRCC website](#) for the most updated information on upcoming educational offerings and networking opportunities.

Registration is available on the LRCC website.

Thank You Renewing Members

Bazonzoes

Brian Songer Agency - Farm Bureau Insurance

Campbell Inc. Press Repair

Carbidex

Comcast

Dusty's Cellar

Edge Partnerships

Effectv

F.D. Hayes Electric

Fairfield Inn by Marriott East Lansing/Okemos

Farm News Media

First Midwest Advisors

Flagstar Bank

GPS Group LLC

Greg Coyne

Harbert Home Systems

Hiring Solutions

Human Capital Consulting Group, Inc.

Integrated Strategies Incorporated

Jartnick Consulting

Lansing Community College

Lansing Glass Co.

Law Office of Reid Felsing, The

McDonald's - Creyts

McDonald's - Grand River Airport

McDonald's - Haslett

McDonald's - Larch

McDonald's - W. Saginaw Hwy.

McDonald's - Grand Ledge

Mercantile Bank of Michigan

Miotech Orthopedic Group

NCG Eastwood Cinema

Outdoor Expressions
Landscaping LLC

Penn Station

Re/Max Real Estate Professionals, Inc.

RetroDuck.com, Inc.

SecurAlarm Systems Inc

Serra Auto Campus

Stillwater Grill

Susan Maples, DDS

Swan Electric Company, Inc.

The Ticket Machine

Tim Barry Agency - Farm Bureau Insurance

Veteran Sewer and Drain Cleaning

ZenBusiness



It's time for a **NEWyou.**



"I'm down over 138 pounds and I couldn't be happier."

~ Nancy W. ~

At 362 pounds, Nancy had type 2 diabetes and had difficulty walking. Although initially resistant to the idea of bariatric surgery, she had to make a change. Nancy and the MBI team worked together to create a customized plan. Now, Nancy goes to the gym every day and is off all of her medications.

"Bariatric surgery is a journey and you have to make the decision to be all in."

Sign up for a free virtual seminar today!

St. Joseph Mercy Livingston | Michigan Bariatric Institute
stjoeshealth.org/mbi-seminar • 517-545-6011

BeRemarkable.

A Member of Trinity Health

New Members

Acorn Health of Michigan

231-668-4909

www.acornhealth.com2549 Jolly Road, Suite 380
Okemos, MI 48864

Aqua Body Lab

517-230-8437

www.aquabodylab.com1020 E. Saginaw Hwy.
Lansing, MI 48906

Beck's Pest Control

810-744-6520

2302 Pine Grove
Burton, MI 48519

Cavanaugh Dental

517-394-4040

www.cavanaugh-dental.com900 E. Cavanaugh Road
Lansing, MI 48910

Derksen Dentistry

517-371-5342

www.derksendentistry.com2410 Lake Lansing Road, Suite 2
Lansing, MI 48912

Elderly Instruments

888-473-5810

www.elderly.com1100 N. Washington Ave.
Lansing, MI 48906

HIL LLC DBA Tommys Express Lansing

616-813-4980

www.tommys-express.com19184 Rosemary Road
Spring Lake, MI 49456

Howard Hannah Real Estate Executives

517-657-9100

www.howardhanna.com/Team/Detail/lansing2040 N. Aurelius Road, Suite 1B
Holt, MI 48842

Mid Michigan Title

517-657-9555

www.facebook.com/midmichigantitle2040 N. Aurelius Road, Suite 1B
Holt, MI 48842

Jack Miceli – Edward Jones

517-694-4954

www.edwardjones.com/us-en/financial-advisor/jack-miceli4625 Willoughby Road, Suite 5
Holt, MI 48842

Liberty Tax Service

517-324-7040

401 N. Clippert St.
Lansing, MI 48912

ResourceMFG

517-323-4710

www.resourcemfg.com3125 Sovereign Drive, Suite 9D
Lansing, MI 48911

The Simon Agency – Farm Bureau

517-388-3871

www.FarmBureauInsurance.com500 E Michigan Ave., Suite 200
Lansing, MI 48912

T-Mobile

517-303-8433

www.T-Mobile.com9010 Warner Road
Haslett, MI 48840

Volunteers of America (Michigan)

517-484-4414

www.voami.org414 N. Larch St.
Lansing, MI 48912

Chamber Milestones

We'd like to offer a special salute to these great organizations who reached milestone anniversaries as Lansing Regional Chamber of Commerce (LRCC) members this month. Thank you for your continued support throughout the years!

Foster Swift Collins & Smith, P.C.

45 Years

Crowne Plaza Lansing West

40 Years

English Inn

30 Years

Doty Agency, Inc.

15 Years

Lezotte Miller Public Relations, Inc.

10 Years

Burger King

5 Years

Eaton Community Bank

5 Years

LRCC members have unparalleled access to company and staff profiles on the LRCC website. To access and update this information at any point, visit lansingchamber.org and enter your username and password. If you have not yet logged onto the site, please follow the simple password reset instructions.

Call (517) 487-6340 with any questions.

Longtime Educator Cindy Anderson to Retire as Eaton RESA Superintendent

Cindy Anderson, superintendent at Eaton Regional Education Service Agency (RESA) will retire this year after 41 years in public education. Ms. Anderson's last day with the district will be Dec. 31. Max Baxter, Eaton RESA board president shares, "Cindy Anderson has been an incredible leader for Eaton RESA, and we are grateful for her service over the past six years. Her collaborative efforts have built stronger relationships with staff, local districts, and the communities we serve. She has always been completely committed to successful outcomes for students, which makes her an exceptional leader. She will be missed, and we wish her the best in retirement."



Anderson

Eaton RESA has selected Dr. Sean Williams, its current deputy superintendent, to succeed Ms. Anderson in the role of superintendent. This is by design. In many organizations, succession planning is a purposeful way to prepare leaders from within that offers consistency with stakeholders and continuity of an organization's direction. Dr. Williams was promoted to deputy superintendent in February 2020 to oversee all instructional areas and has been working with key stakeholders to move Eaton RESA's mission and strategic plan forward.



Williams

Dr. William DeFrance, Eaton Rapids Public Schools superintendent, shared, "Cindy Anderson has significantly shifted the culture of collaboration and importance of strong partnerships with local districts. In her time at Eaton RESA, she has illustrated the balance between leading and serving and has restored our faith in Eaton RESA. Adding Dr. Williams as the new superintendent after Ms. Anderson's retirement will continue our county's progress to understand our service needs. We look forward to continuing our relationship with Eaton RESA in the future."

Dr. Williams joined Eaton RESA in July 2017 as the assistant superintendent of instructional services. This broadened his educational background from primarily general education to include early childhood as well as prevention services. Before joining Eaton RESA, he was the director of student instructional services at Ingham Intermediate School District (ISD). He started his career in education as a secondary social studies teacher at Holt Public Schools and became a middle school principal at Stockbridge before moving to the Office of K-12 Outreach at Michigan State University and then to Ingham ISD.

Dr. Williams has dual doctoral degrees from Michigan State University (MSU) in educational administration and educational policy and his master's degree in K-12 administration from Western Michigan University. He holds certifications in Leading for Justice and Equity (Eastern Michigan University), Diversity, Equity, and Inclusion in the Workplace (University of South Florida) and Urban Education (MSU). Dr. Williams will officially assume the role of superintendent on Jan. 1, 2022. ●



Ownership. Pride. Responsibility.

Your job.
**Done
right.**

Seamless, secure
project facilitation.

From pre-press/graphic design
and printing, to bindery and
mailing — your project is
in-house and *under control*.



TEL 517.372.0268

FAX 517.372.4922

912 W. Saint Joseph
Lansing, MI 48915

BRDPrinting.com



Martin Waymire Founders Retiring, New Owners Announced

Martin Waymire, a full-service public relations and digital marketing firm with a focus on public policy, have announced that PR veterans Josh Hovey, APR, Angela Minicuci, APR, and Andie Poole, APR, will assume ownership of the firm starting Jan. 1, 2022.



Martin Waymire's new ownership team, l-r: Angela Minicuci, Josh Hovey and Andrea Poole.

Martin Waymire co-founder and partner Roger Martin, APR, will be retiring from the firm at the end of the year after a nearly 40-year career as an award-winning journalist, public relations practitioner, and business owner. Firm partner David Waymire will continue full time at the firm for another year, with plans to retire at the end of 2022.

including MDHHS and the Michigan Health & Hospital Association.

Poole has more than 15 years of communications management experience in the technology sector, higher education, and government relations, and has managed

award-winning social and digital media campaigns for Martin Waymire clients, from large corporations to statewide associations. Her work was instrumental in growing Bridge Michigan's digital presence, which has been crucial in its

fundraising efforts and ability to reach readers across the state through social media. Poole was also Martin Waymire's lead consultant on the I Vaccinate campaign to boost childhood immunization rates in Michigan.

"Josh, Angela and Andie, along with Vice President Andrea Kerbuski, have been leading company and client operations since the start of this year and have earned the respect and trust of our growing team and our growing book of clients," Martin said. "We have full confidence that this talented, skilled and experienced team will continue Martin Waymire's reputation of excellent work at the highest levels of our profession."



Hovey has earned a reputation as an exceptional public relations counselor in nearly two decades managing brand reputation, digital media, community relations, crisis communications, ballot campaigns, and other strategic communications services for dozens of clients ranging from Fortune 500 companies to local nonprofits. He served as spokesperson and communications director on the winning 2018 campaign to pass Proposal 1 on the statewide ballot legalizing and regulating marijuana for adults 21 and older in Michigan.

Minicuci led communications for the largest state government agency in Michigan — the Department of Health and Human Services (MDHHS) — for nearly a decade. She helped launch Michigan's I Vaccinate campaign, which in 2020 won a Silver Anvil from the Public Relations Society of America — the top PR award in the nation. She manages earned media and coalition development related to COVID-19 for several clients,

"We are proud and thrilled to take the helm of Martin Waymire after nearly 20 years of stellar leadership from Roger and Dave," Poole said. "We know we have big shoes to fill — quite literally — but we have full confidence in our experienced team to continue the level of service, expertise and passion that Roger and Dave have exemplified throughout their careers."

Founded in 2004 in Lansing, Mich., Martin Waymire principals and staff have a long track record of effectively managing public relations, advocacy, and issue campaigns for small to large corporations, coalitions and associations in industries and policy areas including health care, public health, utilities and energy, high tech, insurance, casino gaming, K-12 and higher education, public transportation, telecommunications, local, county and state governments, the beverage industry and more. With a passion for making Michigan a better place, Martin Waymire team members have won five Silver Anvils – the "Pulitzer Prize" of the public relations world. ●

Regional Firms Make Prestigious Inc. 5000 Magazine List

Seven businesses in the Greater Lansing region were recently named to the prestigious Inc. Magazine list of the fastest-growing companies in America. The list represents a unique look at the most successful companies within the American economy's most dynamic segment – independent small businesses. Intuit, Zappos, Under Armour, Microsoft, Patagonia, and many other well-known names gained their first national exposure as honorees on the Inc. 5000.

Congratulations to the following outstanding business who were included in the Inc. listing:

- Change Media Group, Lansing
- GiantMouse, East Lansing
- Josh's Frogs, Owosso
- Top Flite Financial, Williamston
- Transfast Trucking, Grand Ledge
- Triterra, Lansing
- Covenant Eyes, Owosso

For a complete listing of the Inc. 5000, visit: www.inc.com/inc5000/2021 ●



Pontiac Entrepreneur Brings Pro Basketball Team to Lansing

By: Elizabeth Yassick, Kolt Communications, Inc.

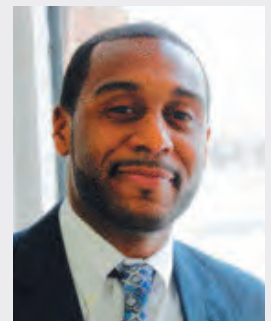
Chris Jackson always wanted to own a professional basketball team. He sought to start his path to ownership through sponsoring. As part owner of Sticky (Cannabis Operations), he wanted to break the barriers between the cannabis and sports industries by sponsoring the Basketball League, an American professional basketball league with 48 teams across the U.S. Through conversations about sponsorship, he ended up being offered the opportunity by the Basketball League to own a Lansing team. Jackson jumped at the chance to fulfill his dream with the Lansing Pharaohs.

"There is a culture around basketball [in Lansing] dating back to Magic Johnson," said Jackson. "I want to give families the opportunity to access quality basketball without having to drive two hours away."

Jackson envisions the Pharaohs to be a cornerstone of the Lansing community, both on and off the court. The team will play at Don Johnson Fieldhouse, in partnership with the Lansing School District. With this partnership, Jackson plans to build the team and spend time in the schools. Each game, the team will give away 50-100 tickets to students and student-athletes to experience partnership and meet players.

"Connecting young people to pro basketball players can make a positive impact on their lives and development," said Jackson.

The team will also participate in community-lead projects with corporate partners. Jackson says their partnerships and community work will focus on community need. Players and staff plan to spend at least a quarter of their normal work hours volunteering, and giving back to the Greater Lansing community.



Jackson

"We want to be an added asset to an already thriving Lansing community," said Jackson.

Jackson's primary goal for the first season is to ensure the team's success and longevity. This means making the playoffs and keeping seats filled at the Don Johnson Fieldhouse. He wants to ensure there is something for everyone who attends the games by providing quality and affordable entertainment.

The season will begin in March 2022 and tickets will go on sale this winter. To learn more about Chris Jackson and the Lansing Pharaohs, visit www.lansingpharaohs.com. ●

MessageMakers: Leading From the Screen

While the ever-changing pandemic continues to impact our lives daily, it is also abundantly clear that many businesses are eager to resume business practices and personal routines as close to normal and as safely as possible. However, to understand how certain businesses have not only survived but thrived in the Covid-19 pandemic, we sat down with Tina Miller, chief operation officer at MessageMakers, to get her insight on the advantages and challenges of working and leading virtually.



Miller

According to Tina Miller, “When the pandemic hit, clients canceled or postponed 90% of their in-person projects. We had to quickly transition out of triage mode and figure out how to keep our staff, clients, and community safe while still staying connected”

We asked Tina how the MessageMakers team changed the way they do things and make it work in the middle of a pandemic and what her personal experience was like transitioning into the world of “virtual leadership.”

FOCUS: How do you think virtual meetings helped to build and establish team rapport?

TINA: Virtual meetings gave us a glimpse into each other’s lives like we hadn’t before. We were suddenly into each other’s homes “virtually” with the kids and pets running, all while we faced the uncertainties of this pandemic. Previously, most of our office interactions were brief and sometimes limited to “our own area” of production or project deliverables. This forced us to rethink and join efforts if we wanted to make this work. Team Zoom games helped keep us connected and allowed for some stress relief and laughter. We feel fortunate that we could take this as an opportunity to bond more as a team. We sent electronic gift cards and other local goodies to the doorsteps of our employees, and we captured our Zoom moments with screenshots of team and clients’ meetings as a weekly recap.

FOCUS: How has MessageMakers expanded its service offerings since the onset of the pandemic?

TINA: We’re extremely proud that we have retained most of our core team throughout the pandemic, and we quickly realized that we were able to work with anybody and anywhere easier than ever before. We expanded our team with new project managers, graphic designers, and event producers, working with team members



worldwide, and bringing creative influence to our team from Brazil to Chicago and working with multiple international clients and virtual events.

FOCUS: Is it difficult leading a team virtually? What are some challenges?

TINA: While we can still monitor employee performance based on project completion status and daily check-ins, the real challenges come when 5 p.m. rolls around and we keep working because we are in the comfort of our home, and we can. There’s not that commute time to disconnect and transition back to our personal lives. Often in the remote work landscape, lines get blurred between work life, and home life and we must try to find ways to avoid burnout and an overload of screen time. It was essential for us to encourage shutting the screen down and ensuring we recognized and avoided burnout within our team. ●

Words From Our Business Partners at The Fraser Trebilcock Law Firm



“First National Bank of Michigan has been wonderful to work with. They are extremely well organized and quickly respond to any questions.”

- Edward J. Castellani
Attorney, Fraser Trebilcock

fnbmichigan.com



101 S. Washington Square, Lansing 48933 | 517.319.8000



Burcham Hills Opens a New Door to Senior Living in Mid-Michigan

A growing number of employees are caring for aging parents, parents-in-law and relatives while working full time. According to AARP Public Policy Institute, about six in 10 family caregivers are employed.

If your employees or coworkers are stressed due to the challenges of balancing careers along with caring for their children and aging parents, it may be helpful to know about a recent addition to our region.

StoneBriar at Burcham Hills, a new four-story addition comprised of 44 upscale apartments, is the first life plan community in mid-Michigan to offer entrance-fee independent living.

Joining the StoneBriar community means a family doesn't wait for a health event to occur. Residents living independently at StoneBriar know that if and when they need assisted living, memory care, rehab or nursing care, they are already home and on a campus that provides any level of care they may need or desire.

The concept is so successful, 84% of the apartments have been sold. Excited residents began moving in this month.

Burcham Hills Board of Trustees President Jim Savage stated, "We are pleased to see the realization of our goal to provide a state-of-the-art community that offers the assurance that a plan is in place if the need for future care should arise."

Kari Rennie, Burcham Hills executive director, believes StoneBriar checks every box for independent senior living. She notes it's a desirable community offering the following:

- private, upscale apartments
- amenities suited for active seniors
- enhanced social opportunities
- freedom from the responsibilities of home ownership
- financial and emotional security, as well as peace of mind knowing there is a plan in place for future health care if needed.

"StoneBriar is truly a fresh take on senior living," Rennie said. "Burcham Hills has been mid-Michigan's trusted provider for senior living services for over 47 years, and we believe StoneBriar will be a community asset that supports residents and helps families for decades to come."



The apartments are connected to Burcham Hills' main campus at 2700 Burcham Drive in East Lansing. All have a patio or balcony, high-end finishes, a full-size kitchen, a washer and dryer and are pet friendly. StoneBriar has a separate covered entrance and underground heated parking.

New for StoneBriar residents are a dining venue, a grab & go pantry and wellness and activity areas — all with expansive views of a new patio area that features a linear fireplace, gazebo and built-in bar. The activity area offers fitness and strength equipment.

There are also a new salon and spa, an upper deck, a seminar room, a multi-purpose space and executive and marketing offices.

StoneBriar residents have access to all amenities on the Burcham Hills campus, including walking paths, a putting green, a children's playground, patios, a library, another wellness center and salon/spa, a clinical laboratory, additional dining rooms and large and small meeting areas.

The \$31 million expansion project was managed by LCS Development, An LCS Company, which partnered with The Christman Company and MAYOTTEgroup Architects, both of Lansing, and MSU Federal Credit Union, East Lansing, for the development, design, construction and financing. ●

Today is the
reward for what
you do every
day.



Every day, you're committed to helping our community move forward. And we couldn't be happier to see you recognized for it. Congratulations, to all of the Celebration of Regional Growth recipients past and present..

pnc.com





It was a perfect fall evening to enjoy the October Member Mixer hosted by our friends at **Carbidex**, the leadership team for The Botanical Company, Franklin Fields and Go Greener. 100+ business and community leaders attended the event and participated in guided tours of the high-tech cultivation center, Franklin Fields. Guests also enjoyed fine food and drinks from Morton's Fine Catering and the live artistic expressions of glassblower Ben Birney. For the past 20 years, Ben has been exploring the world of borosilicate art, color, and design, and you can check out more of his work on his Facebook page, Global Glassworks.



To cut the red ribbon was a culmination of blood, sweat and tears for Amaru and all of the volunteers who have worked so diligently to support the **Funny is Funny Comedy Club**. Located adjacent to the Lansing Mall at 921 Mall Drive West, Lansing, Funny is Funny aims to bring national touring stand-up comedians to spread the laughter to the Lansing area and beyond. Funny is Funny is committed to bringing you top headliners to get your belly laugh going. Every Wednesday through Sunday, they will bring to the Greater Lansing area a fresh national touring stand-up comedian. Every Tuesday night is open-mic stand-up comedy night. Funny Is Funny Comedy Club is located in Greenwood District Studios, Michigan's first Black-owned film and television production entertainment complex.



Completion of **StoneBriar at Burcham Hills** was celebrated by more than 175 attendees at a ribbon-cutting ceremony and reception Wednesday, Sept. 29. This new four-story building offers 44 upscale apartments for residents living independently. StoneBriar at Burcham Hills is the first life plan community in mid-Michigan to provide an entrance fee independent living product. All StoneBriar apartments have a patio or balcony, high-end finishes, a full-size kitchen, and a washer and dryer and are pet friendly. There is a separate covered entrance to the building as well as heated underground parking. Helping open StoneBriar at Burcham Hills are, from left, Richard Funk, Life Care Services; Jessie Gregg, East Lansing Mayor; Jim Savage, Burcham Hills Board of Trustees; Cheryl Strickland, Life Care Services; and Jim Kaczmarczyk, Burcham Hills.



Child and Family Charities, a nonprofit in Lansing, announced that Child and Family Services of Michigan, best known for their program Operation Good Cheer, will be merging with their organization. The Lansing Regional Chamber of Commerce was pleased to be part of their Sept. 23 ribbon tying ceremony and merger celebration. Child and Family Charities is a local nonprofit organization with over 110 years of service in mid-Michigan, offering child welfare, behavioral health, juvenile justice, residential, prevention, intervention, and advocacy programs for children, youth, and families. For more information, go to the agency website at www.childandfamily.org.

MAGNIFY.
MOTIVATE.
MOBILIZE.



The **M3 Method** delivers a “wow” strategy to our clients using the **Power of Three**.

Find out what M3 Group can do for you today. Call 517.203.3333.

M3Group.biz

A photograph of a man in a coffee shop, wearing a striped apron and smiling, with his arms crossed. He is standing in front of a coffee machine. The background shows shelves with coffee-related items.

Powerful Business Intelligence.
Free to Your Small Business.

Let us help you strengthen and grow your business.

- See how you SizeUp by comparing your business to the competition.
- Take your business to the next level with new insights on customers, competitors and suppliers.
- Optimize your advertising results by targeting marketing and promotions.

Get Started at:

ConsumersEnergy.com/smallbiztool

Consumers Energy Count on Us®

SizeUp is brought to you by Consumers Energy.



Mid-Michigan Recovery Services Raises \$250,000 for Lansing's Women in Recovery

By: Celine Kerik, Kolt Communications, Inc.

Mid-Michigan Recovery Services proudly celebrates raising \$250,000 for their campaign, Build-Her Up. The initiative is dedicated to rebuilding homes for women in need of shelter while going through recovery.

In 2020 alone, there has been a 22 percent increase in fatal overdoses in mid-Michigan. With women being more prone to developing addictions than men, Mid-Michigan Recovery Services believes it is necessary to provide safe housing for the women of Lansing.

"There's a shortage of beds everywhere right now," said Amanda Hayhoe-Kruger, Mid-Michigan Recovery Services board member and CEO of Hayhoe Asphalt Paving. "With the pandemic, everyone was stuck at home and addictions got worse, they started, they increased. These are women who literally would not have a place to live, be safe, and actively work on their recovery, because it's hard to work on your recovery if you're trying to figure out 'where am I gonna live' and 'where am I going to get my food.'

Mid-Michigan Recovery Services had many goals when creating the campaign. They wanted to raise funds to repair two Lansing homes needing interior and exterior reconstruction, including roof, floor, fence repairs, paint jobs, adding security systems, and more. This will ultimately give women a sense of stability during a highly vulnerable time in their life. Their most important goal was to continue to get the word out about Mid-Michigan Recovery Services.

"I think the cool thing about BuildHer Up is that it exemplifies hope. Hope for our community in general, hope for the women in the program who are working in active recovery to try and better their lives." Kruger says. "Without this fundraiser, we would not have these houses available for these women in the program. This will save and transform lives for people."

Many would doubt the ability to raise a quarter of a million dollars amid a global pandemic because of the increase in people struggling to keep businesses surviving and families afloat. However, this did not stop the committee from working to make the campaign successful. In a couple of months, they raised more than they ever thought possible, amazing and humbling the entire committee with the help of many in the Lansing community.

"A lot of our donors are small businesses. They are the people who struggled through COVID. They are struggling right now, and yet they still found a way to donate their time, donate their services, donate their money, and for me, it is just so heartwarming to know that so many people still care about their neighbor." Kruger says. "The world may seem crazy right now, but at its core, people are still good."

To donate and learn more about BuildHer Up, please visit www.midmichiganrecovery.org. ●

Lansing Regional Chamber Launches Diversity, Equity and Inclusion Series

The Lansing Regional Chamber of Commerce (LRCC) has committed to diversity, equity and inclusion (DEI). We take this commitment seriously and aim to provide ongoing learning opportunities that will empower the business community to contribute to a more diverse, equitable region that fosters an environment of inclusion.



Shelton

Earlier this year, we asked LRCC members to complete a survey to understand better their needs and concerns related to DEI. As a result of that survey, the LRCC developed a series of programs and professional development opportunities to meet and fulfill those needs. We aim to provide programs that will educate, inform, identify challenges and opportunities, create awareness and celebrate the diverse voices of our region.

The first program in our series was presented on Sept. 29 by Darryl Shelton, COO, Christian Schools International Davenport University IPEX. The topic was *Inclusive Leadership: Actions, Words, and Their Impact on an Inclusive Environment*. The 90-minute session equipped participants with tools to become aware of and sensitive to the emotional reactions and



Andrews

expressions in themselves and others with issues around race, political divisions, and religious differences. Participants explored actions, words, and their impact on an inclusive workplace.

The second workshop in our series was presented on Oct. 27 by Dorinda Carter Andrews, professor and chairperson for the Department of Teacher Education, Michigan State University. In her presentation *Understanding and Addressing Implicit Bias and Microaggressions in the Workplace*, Professor Andrews led participants through a discussion on how our assumptions and beliefs shape our interpersonal interactions in the workplace about individuals and groups in society. The stereotypes and biases that we bring to the workplace often operate in unconscious ways and can cause unintended harm to colleagues. Certain mindsets and behaviors can also negatively impact workplace relationships, organizational processes, and even worker productivity.

For information on upcoming DEI events, contact Ashlee Willis at michiganpremierevents@lansingchamber.org or visit the LRCC website at www.lansingchamber.org.

CREATING HEALTHIER COMMUNITIES

TRIO TERRA
BROWN FIELDS | ENVIRONMENTAL CONSULTING | NATURAL RESOURCES

triterra.us 1305 S. Washington Ave., Ste. 102, Lansing, MI 48910 517.702.0470

Lansing Regional Chamber Recognizes Four New School Superintendents at Executive Welcome Program

The Lansing Regional Chamber of Commerce (LRCC) recognized four new school superintendents in the Greater Lansing region at an the Executive Welcome program on Tuesday, Oct. 26 at the Wilson Talent Center in Mason. The education leaders recognized at the Executive Welcome program included:

- Marcus Davenport, superintendent, Grand Ledge Schools
- Ben Shuldiner, superintendent, Lansing Public Schools
- Shanna Spickard, superintendent, Dewitt Schools
- Sean Williams, superintendent, Eaton RESA

“Our region has been fortunate to have had many outstanding leaders to lead our K-12 schools and also serve as leaders in the community,” said Tim Daman, president and CEO, LRCC. “This particular group of educators came into their positions at a critical juncture as we continue to recover from the Covid-19 pandemic and reconnect students, teachers, staff, and parents to the classroom environment.”

Background on the leaders recognized at the LRCC Executive Welcome:

Dr. Marcus Davenport began as superintendent of Grand Ledge Public Schools on July 1. He started by sharing this commitment, “It is my job to do the very best I can for all students in Grand Ledge Public Schools. That is my job, and that is my pledge to you.” Dr. Davenport guides Grand Ledge Public Schools with a child-centered, student-first approach to decision-making focused on all students. He brings a wealth of experience and knowledge from his tenure



Davenport



Shuldiner



Spickard



Williams

as superintendent of Beecher Community Schools and his many years as a principal and teacher in Michigan and Georgia.

Ben Shuldiner is the superintendent of the Lansing School District. Previously, he was a Dean's Fellow and the Distinguished Lecturer of Education Leadership at Hunter College, City University of New York. He directed all school and district leadership programs for the institution. From 2015 to 2018, Ben served on the New York City Board of Education, the largest school system in America, serving over 1.1 million students. Ben was awarded the prestigious Jefferson Award for Public Service for an Individual 35 Years of Age and Under for his work in education. Ben received his undergraduate degree from Harvard College, where he graduated Magna Cum Laude and his MEd from Baruch College.

Shanna Spickard, Ed.D. has served in education since 1997 and has been a teacher (eight years), a middle school principal (15 years), an adjunct professor (six years), and now is serving her first year as superintendent with DeWitt Public Schools. Spickard was an active member of the state and national principal associations: MEMSPA (past president) and NAESP (state rep, nationally certified mentor, and coach). In addition, Shanna speaks around the state and country on education leadership topics. Her education includes a doctorate and specialist in education leadership (Eastern Michigan University), a master's degree in communication (Michigan State University), and two bachelor's degrees in education and communication (Ohio University).

Dr. Sean Williams is the new Eaton Regional Education Service Agency (RESA) superintendent. Dr. Williams formerly served as the deputy superintendent. In that role, he provided cross-functional leadership and coordination to plan, organize, implement, and evaluate the delivery of all early childhood, special education, general education, prevention, and CTE programs, services, and support provided by Eaton RESA to local constituents and the community. Dr. Williams is also on the planning team for the Capitol Area DEI Educators Network and leads Eaton RESA's DEI efforts. Before joining the Eaton RESA, Sean was the director of student instructional services at Ingham ISD and an adjunct professor for the Educational Administration Department at Michigan State University's College of Education.

The Executive Welcome program was generously sponsored by Delta Dental. ●



PARTICIPATING RESTAURANTS INCLUDED:

- Soul Nutrition*
- Juice Nation*
- The New Daily Bagel*
- Social Sloth Café & Bakery*
- AnQi Sushi*
- Midtown Brewing Company*
- Goodfellas Bagel Deli*
- Sweet Encounter Bakery*

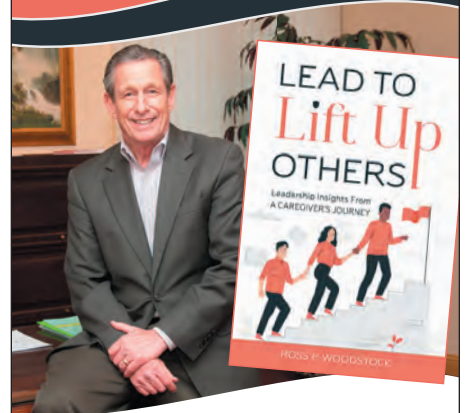


Hundreds Attend LRCC Grub Crawl to Celebrate and Support Downtown Lansing Restaurant Community

Hundreds of supporters joined with friends and colleagues and celebrated a night out during the Lansing Regional Chamber's Grub Crawl on Oct. 7. Presented by the Lansing Board of Water & Light, the Grub Crawl took over downtown Lansing for an evening of food, fun and networking. Downtown Lansing restaurants served up complimentary food and drink specials.

The free event also featured a painter from The Artist's Umbrella and two local musicians. Attendees enjoyed performances by Adam Droscha (2 Faced Wilson), Jon Watt (Creature of One), and Ivy Herron (live painting). ●

A Leadership Book with a TWIST



Author: Ross Woodstock

Executive Coach and Leadership Consultant

Available on Amazon





The 16th Annual Celebration of Regional Growth Awards

INVESTMENTS TRANSFORMING THE REGION

Five organizations will be honored for their commitment to the Lansing region at the 16th annual Celebration of Regional Growth (CORG) Awards, which takes place on Tuesday, Nov. 9 at the Kellogg Hotel & Conference Center. All five organizations are recognized for investments that are making a transformational impact on the community.

THIS YEAR'S CORG HONOREES INCLUDE:

Allen Neighborhood Center for the development of an \$11 million, mixed-use development that will transform the 1600 block of East Kalamazoo Street on Lansing's east side;

Bekum America for the 45,000-square-foot expansion of its Williamston production facility and U.S. headquarters.

High Caliber Karting & Entertainment, for its \$2 million expansion of its groundbreaking entertainment center in the Meridian Mall;

Lansing Board of Water and Light for construction of the natural gas-fired Delta Energy Park and taking a big step towards coal-free power;

McLaren Greater Lansing for construction of a \$600 million comprehensive health care campus.

"The investments by these five organizations represent the amazing transformation that is taking place throughout the Greater Lansing region," said Tim Daman, president and CEO, Lansing Regional Chamber of

Commerce. "The combined investments are transforming an urban neighborhood and a suburban shopping center and demonstrating national leadership in health care, clean energy, international trade, and advanced manufacturing."



Allen Neighborhood Center Presents Allen Place: At the Intersection of Food, Health, Housing and Energy Innovation

The Allen Neighborhood Center (ANC) is a dynamic hub where Lansing's east side neighbors access programs focused on health, food security/access, youth development, entrepreneurship, job skill training, corridor revitalization and neighborhood capacity-building.

ANC's most ambitious project to date is the \$11

Brian Whitfield's
Farm-to-Neighborhood-Mural
(funded by MSHDA) emerging on the
east wall of Allen Place.



and Light. Shoppers, patients, residents and neighbors will also have easy access to a CATA bus shelter on the southeast corner of Allen Place.

Allen Place was made possible by the collective goodwill and generosity of so many, including MI Community Capital, MEDC, COL, LEAP, EGLE, Consumers Foundation, Wieland Corp., and at least 25 other supporters. For more information, visit www.allenplace.org/about.

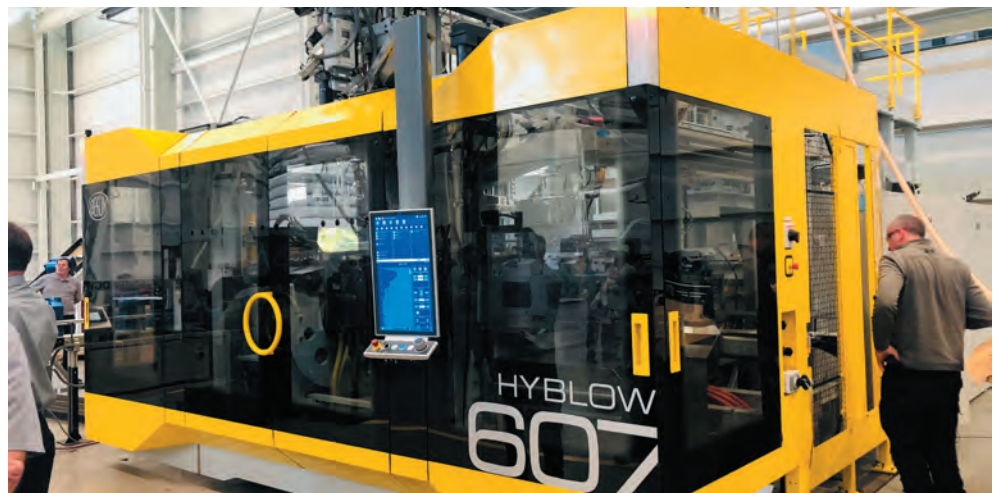
million Allen Place, a mixed-use development converting the complex at the 1600 block of East Kalamazoo Street in Lansing, Michigan, into Allen Place, a vast community space providing 21 units of mixed-income housing along with commercial space, integrative services and programming.

“Once we purchased the complex in which we had rented space for twenty years, we knew that we would need a co-development partner—an entity that knew the world of development and construction,” said Joan Nelson, executive director of ANC. “We immediately approached long-time supporter and friend, Mark McDaniel of Cinnaire Corporation who connected us to Cinnaire Solutions, their development arm. We went to work with them — planning the development, building the capital stack, and (coinciding with the arrival of the coronavirus) constructing Allen Place.”

On the ground floor, 21,000 square feet of commercial space have a decidedly food and health focus.

For example, the newly opened Accelerator Kitchen provides the “next step” for graduates of ANC’s six-year-old Incubator Kitchen as they move toward sole proprietorship. The Incubator and Accelerator Kitchens provide a pipeline of small-scale food processing infrastructure on the block. They connect participants to a “community of food practitioners” and other food-related activities such as the Allen Farmers Market, mid-Michigan Food Hub, and Eastside Lansing Food Cooperative (ELFCO),” said Nelson. ELFCO, a 45-year-old natural food grocery, is re-opening in Allen Place, a location that provides many community agri-food partners.

Right next door to ELFCO, an Ingham Health Centers clinic will be opening on the ground floor. Allen Place Apartments, fitted with the latest energy efficient features, will occupy the top two floors. The entire site, outfitted with solar collecting apparatus, is part of a micro-grid developed with the Lansing Board of Water



Bekum America Celebrates Expansion of State-of-the-Art Manufacturing Facility

Bekum, the leading provider of monolayer and multi-layer extrusion blow molding technology in North America, celebrated the expansion of its state-of-the-art manufacturing facility with a ribbon-cutting ceremony, tours, and machine demonstrations. The new expansion adds 38,000 square feet of manufacturing and 7,400 square feet of office space to Bekum’s existing 115,000-square-foot facility.

“Bekum America was thrilled to welcome our customers, local dignitaries and business leaders to our newly expanded facility,” said Steven D. London, president and chief operating officer of Bekum America. “We are truly grateful for the hard work of our dedicated employees, the loyalty of our customers and the visionary leadership and commitment from our ownership.”



The addition was designed by C2AE and built by Wieland. The expansion will allow Bekum to increase machine output, shorten lead times and expand its workforce. Bekum's manufacturing team proudly shipped the first machine from the new assembly hall in May.

Bekum's outgoing chairman, Martin Stark, was also recognized for devoting over 50 years of his professional career to the development and growth of the plastics industry. Starks has been an exemplary and honorable leader, with numerous industry recognitions, including induction into the Plastics Hall of Fame.

"Martin's persistence and vision turned Bekum into North America's top blow molding manufacturer and personifies great leadership in every sense of the word," said London.

"It has been an honor to work for Bekum America," said Stark. "I have enjoyed every moment promoting the growth of extrusion blow molding."

The official opening of the new facility coincided with Manufacturing Day celebrations. Bekum welcomed over 150 local high school students for in-person tours and machine demonstrations. The students participated in hands-on activities with PlastiVan, and learned more about careers in the plastics industry and Bekum's award-winning apprenticeship program.

Bekum also opened its doors to the community during its Community Open House, allowing everyone to tour the facility, experience machine demonstrations, and enjoy food and fun giveaways.

"We are excited to open our doors to our customers, students and the entire community," said London. "We cannot wait to see what the future of this expansion holds for Bekum."

High Caliber Karting & Entertainment Michigan's Number One Indoor Action Park

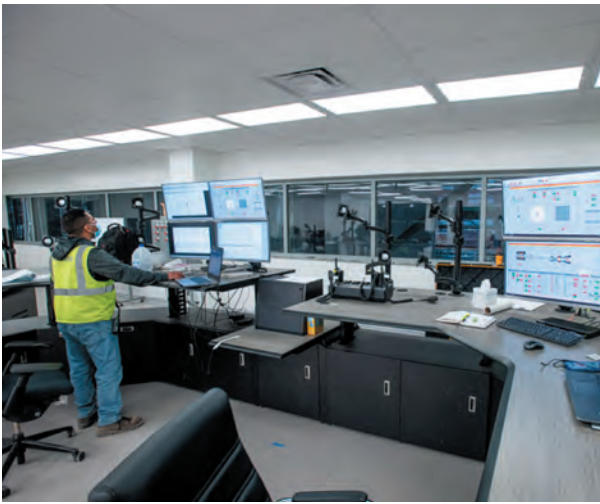
When High Caliber Karting & Entertainment opened its indoor go-karting, axe-throwing, gamified entertainment center, and bistro in the Meridian Mall, it changed the concept of what going to a mall is all about. Over the past two years, High Caliber Karting & Entertainment

has challenged its visitors to "Punch Boredom in the Face." High Caliber Karting & Entertainment has taken its game to another level, recently opening a \$2 million, 25,000-square-foot expansion, including a new bar, 16 additional lanes of gamified axe throwing, 15 lanes of throw bowling and two VIP rooms.

"We wanted a place where people could feel more comfortable to hang out and spend time with friends," said Jordan Munsters, founder and president of High Caliber Karting & Entertainment. "To do that we needed more activities to encourage people to be here all day. We want to be less about scheduled activities and more about spending time together with your friends."

The main staple of High Caliber Karting & Entertainment has been the European electric race karts imported from Italy. Drivers can reach speeds of up to 50 mph without choking on exhaust fumes, thanks to their electric engines. Another popular entertainment highlight at High Caliber Karting & Entertainment is axe-throwing. The recent addition includes a 2,800-square-foot assault arena where

The investments by these five organizations represent the amazing transformation that is taking place throughout the Greater Lansing region. The combined investments are transforming an urban neighborhood and a suburban shopping center and demonstrating national leadership in health care, clean energy, international trade, and advanced manufacturing.



guests can battle with Nerf Rival Blasters or a scored Archery Tag match.

“We also have 16 lanes of gamified axe-throwing,” said Munsters. “You walk into the area, and there are trees hanging from the ceiling. You can play several different games including Tic-Tac-Toe, Connect Four, and Zombie hunting.”

High Caliber Karting & Entertainment has five VIP rooms that have become popular sites for businesses that want a rent a space for team building activities. The spaces are popular for executive leadership retreats and help people restore connections that have been lost because of Covid.

“The VIP rooms allow people to have a home base which provides a common bonding area where people can return after enjoying different activities. People can return to after enjoying different activities,” said Munsters. “People can share a meal and reconnect.”

Munsters says the most impressive part of the expansion is the bar/bistro area, a space developed using 62 local artists and features painting, murals, and graffiti. Double Clutch sports bar features 32 beers on tap, five 13-foot by eight-foot screens and the High Caliber Bar and Bistro offers many different food options with their specialty being pizzas.

Lansing Board of Water & Light Delta Energy Plant

When the Lansing Board of Water & Light (BWL) fires up its soon-to-be completed natural gas-fired Delta Energy Park, it will take a large step in its drive toward coal-free power. Located at the Erickson Power Station in Delta Township, the new plant will replace both BWL’s coal-fired plants, Eckert, which was retired in 2020, and Erickson



Peffley

power stations which are scheduled to go offline in 2023. Retiring both plants will make the BWL the largest utility in Michigan to generate coal-free power by 2023, reducing its carbon emissions by 80 percent. The project was the largest in BWL history, which presented some challenges, particularly in securing the workforce needed.

“There is a shortage of skilled labor nationally, and when you are going to do a \$500 million project, you need a lot of labor,” said Dick Peffley, general manager, BWL. “We had about 350 people on site every day. Thankfully, the Board has a long working history with local trades, so we were able to get the workforce we needed.”

Delta Energy Park, the new natural gas-fired combined-cycle generating facility, has combustion turbines capable of 57MWs each and one steam turbine generator capable of 90MWs. Natural gas can come online more quickly than coal and is more consistent than renewable energy sources (wind, solar), ensuring reliable sources of energy for BWL customers.

“A coal plant takes eight hours to fire up, so it is not a reliable source of energy when it comes to backing up renewables,” said Peffley. “A gas plant is a reliable backup for renewables, and has far less emissions than a traditional coal plant.”

The conversion to clean energy and this investment have been lauded as the benefit of having a municipally-owned utility and customer-controlled utility in Lansing. BWL engaged the public early in the planning process and incorporated much of the feedback received into the Delta Energy Park plan.

“We heard clear they wanted to see the Board wind down the coal facilities,” said Peffley. “They wanted us to increase renewables, but they understood the storage technology for renewables isn’t there yet, but when it is we will be investing in that.”

In addition to the new natural gas plant, the BWL



is investing in cleaner energy options, including investments in renewable energy sources. These sources include the Delta Solar Park – Michigan’s largest sun-tracking solar array in Delta Twp., expanded wind energy located in Michigan’s thumb-area and growing the BWL’s energy efficiency programs.

McLaren Greater Lansing Ushering in a New Era in Health Care

Health care is changing and the Lansing region is at the forefront of that change. McLaren Greater Lansing (MGL) is a few months away from officially entering a new era in health care. Workers are putting the finishing touches on McLaren’s \$600 million comprehensive health care campus, developed at the Michigan State University (MSU) Foundation’s University Corporate Research Park, located between Collins Road and U.S. 127. MGL plans to begin seeing patients at the 240 bed, 500,000-square-foot facility in March 2022.

The McLaren campus will house a state-of-the-art hospital, cancer center, ambulatory, and other facilities to support health care delivery. MGL President & CEO, Kirk Ray says the new hospital will improve access to emergency care.

“We’re going to be adding about 30-40 percent capacity,” said Ray. “We have what’s called a vertical express unit that will handle less acute services. Patients will have less wait time, and patients that truly need an ER bed will get one much quicker.”



Ray

The hospital will also feature family-centered private rooms and a new birthing center with private birthing suites dedicated from the time the mother shows up until the time she leaves.

The campus will be home to 1,000 physicians, researchers, educators, and other academic and medical team members. McLaren and Michigan State University are also expanding partnerships on research, education, and clinical services.

In addition to the hospital, the Karmanos Cancer Institute and McLaren’s health and wellness pavilion will offer a wide array of outpatient care services, including innovative, convenient care for patients fighting cancer.

“Karmanos is one of the top tier programs in the country for clinical trials and one of the largest in the state of Michigan for clinical research and clinical trials,” said Ray.

The campus will also house the new McLaren Orthopedic Hospital, replacing the current orthopedic hospital on South Pennsylvania Avenue.

During the planning and construction process, McLaren Greater Lansing has intentionally reached out to a broad cross-section of stakeholders, including the McLaren staff and the general community, for input into what the new hospital should look like when it opens next spring.

“We went through 250 iterations of rearranging the rooms until we all felt like we had the best model for the safety of our patients and staff,” said Ray. “We also integrated the community early, which helped us redesign the entire site to consider things like bus transportation, respite areas on campus, and aesthetics in the hospital.” ●

Martin Health & Beauty Move-In Ready Space For Lease



 **FOR LEASE**
SW Corner of
Cedar St. &
Willoughby Rd.
10,000 SF
Fitness Studio



FOR LEASE
Grand River Ave.
Near US-127
1,630 SF former dance studio



FOR LEASE
SW Corner of
St. Joe Hwy. & Creyts Rd.
2,081 SF tanning
salon w/13 tanning beds

Contact Us / 517 351-2200

martincommercial.com

DEAN

TRAILWAYS

Dean Trailways is the premier transportation choice to comfortably and safely get you where you need to go. Arrive in style and leave the driving to us.

Visit deantrailways.com
Call 800-282-3326



DRIVING GREATER LANSING

NEOGEN: Protecting the Global Supply Chain

NEOGEN CEO John Adent says his company is the best-kept secret in Lansing. Six hundred of NEOGEN's 1,900 global employees are based in Lansing. Adent spoke to the Lansing Economic Club on Oct. 11. Though they are headquartered in Lansing, NEOGEN has offices in 14 countries and sells products in 150 countries.

"We've made serving the global community a priority for 39 years," said Adent.

NEOGEN is the world's largest genomics company, conducting 600,000 genomics tests every month. The company is also a global leader in animal and food safety solutions. Adent told the crowd that most of the company's products come from consultation with the company's customers.

"They have a problem. We fix it," said Adent.

NEOGEN has enjoyed 22 consecutive years of growth—even during Covid - the company grew \$50 million in sales last year. Adent says that number was more than the company's total sales just 15 years ago. He credits Neogen's 1,900 employees with their success.

"They are the ones who find new ways to innovate," said Adent. "They connect with our customers."

Listed on the NASDAQ exchange since 1989, Adent joked with the crowd about how much money they could have made if they had invested in the company when it first went public.

"If you invested \$100 in Neogen in 1989, it would be worth \$100,000 today," said Adent with a smile. "You should have done it!"

Adent says a big part of NEOGEN's success is staying true to its humble roots. NEOGEN's Lansing employees are spread over nine buildings, many of which are former school buildings closed by the Lansing School District.

"We like to joke that NEOGEN owns more schools than the Lansing School District," said Adent. "You really don't make much money from a fancy office."



Adent cited four areas where the company expects to be the foundation of its future growth; expanding its market share, internally developed products, strategic acquisitions, and expanding international markets. ●

Saving the Family Cottage



Our Cottage Law team can help you think through the issues and take the actions necessary to create a cottage plan to keep your beloved home in the family for future generations.

FraserTrebilcock
LAWYERS

124 W. Allegan St., Suite 1000, Lansing, MI 48933
When it matters in Michigan - www.fraserlawfirm.com



ATHENA WIN: An Evening of Empowerment

A sold-out crowd of 200 filled the room at Crowne Plaza Lansing West on Thursday, Sept. 30 for ATHENA WIN's annual Evening of Empowerment. The evening, which is the biggest event of the year for ATHENA WIN, was an inspiring showcase the journey of successful women.

"The event allows us to highlight the strengths of successful women, their challenges, the obstacles they have overcome," said Brenda Geohegan, event co-chair.

The Evening of Empowerment also serves as an opportunity to recognize the ATHENA Leadership Award recipient. This year's ATHENA honoree Elaine Hardy inspired the crowd with her remarks, as did keynote speaker, Amanda Sauer of Pittsburgh, who was the first female football referee in the Big Ten Conference.

The event was supported by several key sponsors, including the keynote sponsors, PNC and AF Group, beverage



Geohegan



Hengesbach

sponsors United Electric and Sparrow Health and gift sponsors MSU Federal Credit Union, Ngage Management and AT&T. WLNS-TV News 6 and the Lansing Regional Chamber of Commerce provided support with promotion, accounting and registration.

Over the past five years, the Evening of Empowerment has grown into a premier program in the region.

Organizers promise it will continue to grow.

"Next year it is going to be rocking," said Susan Hengesbach, event co-chair. "It gets bigger and better every year."

ATHENA WIN works to empower local women in the community. The organization sponsors several events, including Girls Night Out. Executive Connections is a 12-month program that offers monthly coaching and mentoring to participants from community leaders who donate their time. ATHENA WIN also sponsors outing tours of leading organizations in the community. ●

Lansing Regional Chamber Announces Its Newest Leadership Lansing Class

The Lansing Regional Chamber of Commerce (LRCC) has announced that 32 outstanding leaders have been named to its seventh Leadership Lansing program. Class participants will spend the next eight months honing their leadership skills, becoming familiar with key institutions and issues in the region, and connecting with community leaders.



Leadership Lansing is a talent initiative that runs annually from October through May and is designed to develop a new generation of community leaders in the Lansing region. Upon completing the program, participants will have a greater understanding of how essential community institutions contribute to the region's overall quality of life. Participants will also receive extensive training to enhance their leadership skills, which will benefit their performance inside their organizations and the community.

"Our members have told us for years that attracting and retaining talent is their number one priority," said Tim Daman, president & CEO, LRCC. "Leadership Lansing is an initiative designed to support efforts to promote the development and sustained success of leaders in our region. Participants who come through Leadership Lansing are the best of the best."

Through the first six years of Leadership Lansing, 227 leaders have completed the program. Past participants have formed an alumni group, Leadership Lansing Collective, which is working to support nonprofit organizations and serve in support of programs that promote the Greater Lansing region. ●

Chamber Events
Your Connection to Professional Development and Networking Success

From professional development to networking, the Lansing Regional Chamber of Commerce hosts events to fit every need. A full list of events is located on the Chamber Calendar on the LRCC website.



Participants in this year's Leadership Lansing program include:

- | | |
|---|---|
| Amy Adamy
Lansing Board of Water and Light | Dwayne Jones
MSU Department of Police and Public Safety |
| Mitchell Bal
PNC Bank | John Kraft
McLaren Greater Lansing |
| Sherrie Blankenship
Maner Costerisan | Dan Kreft
Dart Bank |
| Alex Brace
Small Talk Children's Advocacy Center | Leigh Kuhn
Farm Bureau Insurance of Michigan. |
| Chelsey Carpenter
Independent Bank | Paul Quayle
Great Lakes Crystal Technologies |
| Amanda Chapman
General Motors - Lansing Grand River Assembly | William Richards
A.J. Boggs & Company |
| Lucy Ciaramitaro
Michigan Health & Hospital Association | Chelsea Roberts
Small Talk Children's Advocacy Center |
| Sharon Civils
Lansing Branch NAACP | Ashley Sandborn
Lansing Regional Chamber of Commerce |
| Chad Clark
The Christman Company | Mike Schram
WILX-TV News 10 |
| Amy Coe
MSU Federal Credit Union | Lori Simon
Sparrow Health System |
| Jacquelyn Corey
AF Group | Amber Shires
Lansing Community College Foundation |
| Shaun Darling
MSU Federal Credit Union | Serenity Skillman
Granger Waste Services |
| Jan Deyton
Dewpoint | Kathleen Szuminski
Eaton RESA |
| Megyn Forest
Big Brothers Big Sisters - Michigan Capital Region | Justin Tuck
LAFUCU |
| Nicole Hankwitz
McLaren Greater Lansing | Smiljana Williams
Lansing Board of Water and Light |
| Marcus Hardy
Lansing Housing Commission | |
| Samuel Hosey
AF Group | |



From financial security to a helping hand, the **EXPERIENCE MATTERS.**

Find a local agent who can protect what matters to you.



MICHIGAN PREMIER EVENTS

Association, Corporate & Government Events Management Company

CONTACT US TODAY!

www.MichiganPremierEvents.com

**Resch Strategies
2021 Leadership Lansing
Scholarship Recipient**

Megyn Forest

Executive Director, Big Brothers Big Sisters – Michigan Capital Region

Resch Strategies Awards Leadership Lansing Scholarship to Big Brothers Big Sisters – Michigan Capital Region

Leadership from Big Brothers Big Sisters (BBBS) – Michigan Capital Region will have the opportunity to attend Leadership Lansing, the Lansing Regional Chamber of Commerce’s leadership initiative, at no cost this year thanks to a contribution from Resch Strategies.

Matt Resch, founder of the Lansing-based public relations and public affairs firm, said the scholarship is being offered for the seventh consecutive year.

“Leadership Lansing provides community leaders with training and support to strengthen their organizations and the Lansing region,” said Matt Resch, president of Resch Strategies. “We’re proud to award our scholarship to help local nonprofits like Big Brothers Big Sisters make a difference in our community.”

The Resch Strategies Leadership Lansing Scholarship was first established in 2015 to encourage area non-profit leaders to participate in the program by covering the full cost of tuition. Participants in the program engage in seven workshops over eight months where they are exposed to key local institutions, industry sectors and business leaders.

For more than 65 years locally, BBBS – Michigan Capital Region has focused on helping children realize their potential to succeed and thrive in life. BBBS facilitates and supports meaningful, monitored matches between adult volunteers and youth, which have a direct and lasting effect on the lives of young people.

“I’m looking forward to participating in Leadership Lansing, thanks to support from Resch Strategies,” said Megyn Forest, executive director of BBBS – Michigan Capital Region.

“I’m excited to bring leadership skills back to our organization that will benefit the youth and communities we serve.”

Past recipients of the scholarship are the Arts Council of Greater Lansing, Child and Family Charities, Hospice of Lansing, Transformation GEMS Women Entrepreneur Startup Accelerator, Lansing Art Gallery and Education Center, Davies Project for Mid-Michigan Children, and First Tee of Mid-Michigan.

For more information about Resch Strategies or the Leadership Lansing Scholarship, please visit www.ReschStrategies.com or call (517) 371-7843. ●

State Budget Includes Investments in Talent, Workforce, Infrastructure and Childcare

Gov. Whitmer signed the Fiscal Year (FY) 2022 state budget, which began on Oct.1. The total state budget, which includes the K-12 school aid budget, is \$70B. There were several key areas of investment that were important to Lansing Regional Chamber members.

To view the state budget bills (Senate Bill 82 & House Bill 4400), head to www.legislature.mi.gov.

Below is a snapshot of key areas of investment important to Lansing Regional Chamber members:

Talent & Workforce Development Initiatives (Policy Priority: Talent & Workforce Development)

Futures for Frontliners (\$25 million) Assists frontline workers to attend community colleges tuition-free.

Going PRO (\$35 million) awards employers' financial assistance in training, developing, and retaining current and newly hired employees.

MI Reconnect (\$55 million) provides a last-dollar scholarship to individuals over the age of 25 with a high school diploma seeking an associate degree or Pell-eligible skill certificate.

Statewide Pre-Apprenticeship Program (\$8 million) connects individuals that are unemployed or underemployed with training and resources to advance



careers in the building and construction trades.

All of these talent and workforce development initiatives will play a significant role in reaching the Michigan's Sixty by Thirty goal.

Childcare (Policy Priority: Talent & Workforce Development)

The state budget expands low or no-cost childcare to 105,000 more kids. By expanding childcare, parents can have peace of mind and offer kids a safe place to learn, grow, and play. It helps small businesses continue staffing

up, addressing the worker shortage by addressing a key underlying cause—lack of childcare. It also delivers a one-time \$1,000 bonus to childcare workers, who work hard every day to care for our kids and provides resources to refurbish and repair childcare facilities.

Infrastructure (Policy Priority: Regional Infrastructure)

The state budget invests nearly \$200 million to repair or replace around 100 bridges in serious or critical condition and create 2,500 jobs. The \$200 million investment is on top of the work underway through Rebuilding Michigan, which is investing \$3.5 billion to fix state roads and highways.

State Raining Day Budget (Policy Priority: Local Government Financial Health)

The state budget puts \$500 million into Michigan's rainy-day fund. This brings the state's rainy-day fund to nearly \$1.4 billion. ●

We make it our business to help you with yours.



At Blue Cross, we understand finding the right health care coverage for your employees can be no simple task. Which is why we make it easier on them — and you. We do it by giving them the personal attention your employees deserve and the help they need to make smart choices when it comes to enrollment and finding the right health care. Our robust data helps provide actionable insights to maximize benefit value for your employees while minimizing costs for you. It all adds up to smarter, better health care. See what Blue Cross can do for your business.

Learn more at bcbsm.com/employers

Make Memories That Last a Lifetime



January 28, 2022 – April 7, 2022
Exclusive Nonstop Vacation Flights
 from Lansing via Swift Air

CANCUN

Departure Day WE, FR, SA	Departure Dates 01/28/22 – 04/02/22
-----------------------------	--

PUNTA CANA

Departure Day TH, SU	Departure Dates 01/30/22 – 04/07/22
-------------------------	--

To book your trip,
 visit flylansing.com



APPLE LEISURE GROUP®

Michigan Sees Strong Q2 Growth

The U.S. Bureau of Economic Analysis (BEA) released its state-by-state 2021 Q2 Gross Domestic Product (GDP) numbers showing Michigan at 8.3% growth - the third highest in the nation and the best in the Midwest.

“This is great news for our state as we continue our strong economic recovery,” said Tim Daman, president & CEO Lansing Regional Chamber of Commerce. “This data supports the resiliency of our business community, workforce and strong economic climate.”

In addition to the GDP numbers from the BEA, Michigan’s unemployment rate is below the national average and has been on a downward trajectory for the last 17-month period since May 2020. In the first quarter of 2021, personal income was up 19.1%, the fourth-highest nationwide. Both Moody’s and S&P improved the state’s credit rating outlook. And the state turned a projected \$3 billion deficit into a \$3.5 billion surplus. Michigan remains a top ten state to do business and still boasts the strongest automotive manufacturing nationwide.

Michigan Enhancement Grants

In the Michigan state budget, there was a new section for enhancement grants. The Michigan Enhancement Grants are for local projects that lawmakers submitted during the appropriations process. The Michigan Enhancement Grants are for those communities that have struggled during the global pandemic, and the grants are for upgrades to infrastructure, programs, and quality of life improvements.

There were 175 local projects (\$146.9 million) that received the Michigan Enhancement Grants.

Below are the grants awarded in our region:

- Lansing Arts Center: \$2 million
- McLaren (Lansing): \$1 million
- Child and Family Charities: \$1 million
- Delta Twp. Regional Fire: \$1.4 million
- Lansing Capitol Security: \$1 million
- Mikey 23: \$100,000
- Poor People’s Campaign: \$375,000
- Ingham - Advance Peace Street Outreach: \$357,000
- Meridian Twp. Fire: \$225,000
- Small Business Development Centers: \$200,000
- Tri-County Special Ops.: \$150,000
- Allen Neighborhood: \$85,000
- Lansing Police Department: \$75,000
- Women’s Center of Lansing: \$25,000
- Firecracker Foundation \$25,000 ●

NEW HIRES



Sabrosky

A graduate of Michigan State University's College of Communication Arts and Sciences, Sabrosky received her degree in advertising and public relations.

Emily Sabrosky recently joined **Edge** as a public relations and events specialist. In this role, Sabrosky will assist in managing client events, public relations, social media,



Kowalewski

will help support and build the Banks' brand in the various markets Union Bank serves. Kowalewski joins the organization with over 30 years of diverse business development and finance experience in the Greater Grand Rapids area.

Union Bank has announced the addition of **Robert Kowalewski**, vice president, director of business development. Kowalewski will focus on strategic initiatives that



Smith

investment strategy for Detroit, establishing and maintaining relationships with local partners and funders to advance Cinnaire's Priority City initiatives.

Sherita Smith has been appointed vice president of community development at **Cinnaire**. Sherita will be taking the helm implementing Cinnaire's targeted



Wein

critical issues facing Michigan's health care workforce. To request custom data and research, please contact Michelle Wein for a personalized consultation at michelle.wein@mhc.org or (517)329-5879.

Michelle Wein is the new director of research at **Michigan Health Council**. She oversees MHC Insight, where she collaborates with partners to identify, analyze, and report on

Drew Murray is the new senior director for strategy & public affairs at



Murray

Network's senior director for community engagement, where he helped physician organizations, hospitals/health systems, health plans, and state government partners share real-time patient health information for treatment, payment, and health operations.

Michigan Health Council. In this role, he leads efforts to increase the organization's visibility, reach, and revenue. Drew previously served as the Michigan Health Information



Becker-Utess

Intermediate School District, where she had served as an academic consultant since 2014.

Mason Public Schools has recently named **Tara Becker-Utess** as the new assistant principal at Mason High School. Ms. Becker-Utess came to Mason from Ingham

EXIT Great Lakes Realty is pleased to announce that **Shannon Binkley** has

Owning or investing in property can be complex. No matter what step you're in – buying, selling, leasing, or managing your property, we're in your corner. Let us help you turn that investment into a success.

We're NAI Mid-Michigan. Your best choice for commercial real estate.

NAI Mid-Michigan
naimidmichigan.com • 517.487.9222

joined its growing team of dedicated real estate sales professionals. EXIT Great Lakes Realty is located at 115 W. Lawrence Ave., in Charlotte, Michigan, and is a proud member of EXIT Realty Upper Midwest's rapidly expanding network of independently owned and operated brokerages across the region.



Torres

Union Bank announces the addition of **Janet Torres**, vice president of retail banking and deposit operations. Torres joins the bank as an experienced professional

with a successful career in banking, recruiting and talent management, project management, and change leadership in the Greater Grand Rapids area with over 19 years of diverse experience in the finance industry.



Miceli

Jack M. Miceli has been named to take over the local **Edward Jones** office located at 4625 E. Willoughby Road, Suite 5 in Holt. He has 16 years of experience in the financial services

industry. Edward Jones, a Fortune 500 company headquartered in St. Louis, provides financial services in the U.S. and in Canada, through its affiliate.



Keast

Union Bank is pleased to announce the addition of **Michael Keast**, vice president, commercial relationship manager. Keast will expand the banks'

commercial market share within west and central Michigan, focus on commercial and industrial companies,

commercial real estate, and provide business owners a consultative approach and the tools needed for business growth.

AWARDS



In Jackson, **Andy's Place** has received the Charles L. Edson Tax Credit Excellence Award in the Special Needs Category. The Edson Awards recognize outstanding developments and organizations that have demonstrated incredibly impactful use of the Low-Income Housing Tax Credit (LIHTC). Recipients are recognized at a ceremony in Washington, D.C., which brings together members of Congress, business, and nonprofit leaders to celebrate LIHTC developments that strengthen communities, improve health, and boost the economy in urban, suburban, and rural areas neighborhoods across the country.

Building off a respected history of excellence in economic development practice, the **Lansing Economic Area Partnership (LEAP)** received two top international Excellence in Economic Development Awards from the International Economic Development Council (IEDC) today. LEAP received a Gold Rank for the BLOCK600 project in the Real Estate Redevelopment and Reuse category and a Gold Rank for its One and All-Inclusive Entrepreneurship Initiative Economic Equity and Inclusion category.

The **Gillespie Group** has been recognized by the International Economic Development Council (IEDC) at this year's IEDC 2021 annual conference in Nashville, Tennessee. Gillespie's BLOCK600 project in downtown Lansing won a gold award in the Public-Private Partnerships category. The BLOCK600 project transformed a previously vacant,



Gillespie Group President Pat Gillespie and MEDC Managing Director of Community Assistance Programs Sarah Rainero accept the gold award for Public-Private Partnerships at the 2021 IEDC annual conference.

contaminated, and desolate block into a vibrant, thriving block in downtown Lansing's Stadium District. Supported with a \$1.5 million MCRP performance-based grant from the Michigan Strategic Fund, the completed project includes a hotel, grocery store, and housing, now providing residents, workers, and businesses with the amenities they expect to see in a great city.

DISTINCTIONS



Alaiedon Elementary, one of **Mason Public Schools'** exemplary elementary schools, was named a 2021 National Blue-Ribbon School. The award from the U.S. Department of Education is based on a school's success in maintaining high academic performance or progress in closing achievement gaps among student subgroups. This prestigious award has been given to Alaiedon Elementary for consistently maintaining high M-STEP (Michigan Student Test of Educational Progress) scores for all grades and being a top-performing school in Michigan.

Congratulations to **Tracy Hazel** with **Advanced Training and Consulting**

for being recognized in August as the Small Business of the Month by State Representative Angela Witwer.



Patient satisfaction ratings have risen by nearly 20 percent within a year at the **Sparrow Eaton Hospital** Emergency Department, thanks to a series of changes to improve the patient experience. The Emergency Department is the gateway to the hospital for many patients and Sparrow Eaton realizes a patient's interaction there creates a ripple effect throughout their stay. From pediatric to geriatric care, dignity, compassion, communication, and listening are at the forefront of caring for our community. That's evident based on Sparrow Eaton's emergency department increased patient satisfaction scores via surveys from Professional Research Consultants Inc., a national healthcare quality firm.

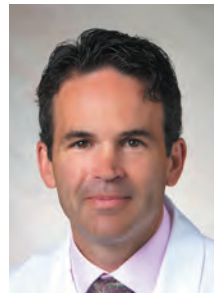


Lansing Community College (LCC) men's basketball coach Mike Ingram has been inducted into the Basketball Coaches Association of Michigan (BCAM) Hall of Fame. The ceremony was held Saturday, Oct. 2 in Pontiac, Michigan. Coach Ingram has over 600 wins, 18 conference championships and four top-ten finishes at nationals in 30 years of coaching the Stars. Once a player at LCC, Ingram has fully cemented his legacy at LCC. He has led LCC to 18 Western Conference Championships, and his teams have finished in the Top 8 four times at the NJCAA National Championship.

Physicians Health Plan (PHP), a subsidiary of Sparrow Health System, announced that it has earned a Medicare Advantage quality rating of 4.5 stars (out of 5) from the U.S. Centers for Medicare & Medicaid Services (CMS). The rating means that members enrolled in PHP's Medicare Advantage plans — PHP Advantage, Sparrow Advantage, Covenant Advantage, and U-M Health + St. Joe's Advantage — have access to high quality Medicare Advantage plans offered by a locally owned and community-based health plan.



Herald



Entler



Hodge



Omar



Ross



Wolfe



Schluckebier

Christopher Herald, M.D., born at Carson City Hospital, the son and grandson of Carson nurses, and who now leads the emergency department at

Sparrow Carson Hospital, is Sparrow's Physician of the Year. **Paul Entler, D.O.**, Sparrow Health System vice president of quality and performance improvement, received the Sparrow Physician Leadership Award. Inductees into Sparrow's Physician Hall of Fame can be nominated by colleagues or members of the community. This year's inductees include: **Timothy Hodge, D.O.**, an emergency medicine clinician, educator, and leader. **Said Omar, M.D.**, the distinguished medical director of the Sparrow Hospital Regional Neonatal Intensive Care Unit. **Albert Ross, M.D.**, a founding partner of the Michigan Gastroenterology Institute and active in numerous Sparrow governance committees. **Rebecca Wolfe, M.D.**, an outstanding family medicine physician at Sparrow Medical Group North. The late **Paul Schluckebier, M.D.**, an OB/GYN whose passion for his patients and their families impacted countless lives.

PROMOTIONS

Alerus Financial Corporation (Nasdaq: ALRS) announced that its Board of Directors appointed **Katie A. Lorenson**, the Company's current executive vice president and chief financial officer, as the Company's next president and chief executive officer, effective Jan. 1, 2022. Ms. Lorenson will also join the Company's Board of Directors upon assuming her new role. Randy L. Newman will transition to the role of executive chairman of the board to ensure a seamless leadership transfer.



Walthorn

Plante Moran has appointed **Greg Walthorn** as managing director of its East Lansing office. Walthorn will be responsible for leading the East Lansing office and further developing its staff and client base. He will continue to serve as a partner in wealth management, helping to



Comprehensive Cancer Care

Tailored to You

- » World-renowned cancer specialists
- » Advanced precision technology
- » Life-saving clinical trials
- » A team of nurse navigators

Sparrow.org/Cancer

 **Sparrow**
Herbert-Herman
Cancer Center



Revamp Your Office Space

Whether you need new equipment or it's time for a major upgrade, there's an MSUFCU business loan to meet your needs.

Our low rates, no application fees, no prepayment penalties, and several loan options give you the flexibility to find the business loan that works best for you.

MSUFCU. Good for Business®

Contact us today.
msufcu.org/business | 517-333-2424, ext. 4848

Visit msufcu.org/business for full terms and conditions.

 **MICHIGAN
STATE
UNIVERSITY**
FEDERAL CREDIT UNION
Building Dreams *Together*

maximize the after-tax net worth for individuals and their families.



Korff

Peckham has named **Tom Korff** as its new vice president of business services. Korff joins Peckham's executive leadership team in steering the success of its

Contact Center Solutions division. Korff will provide operational leadership for contact center and IT helpdesk services that support government and commercial outsourced functions for more than 1,000+ employees.



Howell

LAFCU has promoted **Robyn Howell** to chief human resources officer. Howell is responsible for LAFCU's human resource strategy in support of the credit union's business plan and

strategic direction. This includes the areas of talent, change, organizational and performance management; training and development; compensation; and succession planning. She also assists with union relations.

BOARD OF DIRECTORS & EXECUTIVE COMMITTEE UPDATES



Watson

Michigan Home Care & Hospice Association has announced that **Sam Watson**, senior vice president, Michigan Health & Hospital Association, Okemos has

been elected to the board of directors for a two-year term.

At the **Mason Public Schools Board** on Education meeting on Monday, Sept 20, the board voted to appoint a new member to fill the board vacancy. **Matthew Hall** was sworn in at the meeting and will serve as a member of the Board until 2022 when his term will expire, and an election will take place. Mr. Hall was one of 13 applicants to fill the vacant seat on Mason's Board of Education.

The City of Lansing has appointed **Maureen McNulty Saxton** and **Danielle Lenz** as board commissioners for the **Lansing Entertainment and Public Facilities Authority (LEPFA)**. The 11-member commission is responsible for establishing policies and guiding the organization that manages the Lansing Center, Jackson Field and Groesbeck Golf Course, as well as the produces and manages a variety of community events.



Curtis

The **Ingham Health Plan Corporation** has named **Tom Curtis** to its board of directors. Curtis is quality improvement and program development manager,

Michigan Department of Health and Human Services, Medicaid Administration. IHP is a nonprofit that provides access to basic medical and dental care for low-income uninsured Ingham County residents.



Onaga

Peckham has named a new director to its board, **Esther Onaga**, community advisory member and Faculty Emeritus of Human Development

and Family Studies at Michigan State University. Esther Onaga received her Ph.D. from Michigan State University

in community psychology. She served as the director of evaluation at St. Lawrence Hospital in Lansing followed by a faculty position at Michigan State University. She was a project manager for a NIMH-funded dissemination study of one of the first evidence-based programs serving people with serious and persistent mental illness.

PEOPLE NEWS

A native of Venice, Italy, **Giorgio Burigana** spent over 40 years in the hotel business in Europe, the USA, Canada, Asia, and Australia. Burigana also spent 15 years with companies such as ITT Sheraton and Hyatt International. He wanted a change of scenery and recently became a realtor at **Exit Realty Home Partners**, located at 1000 S. Washington Ave., Suite 104 in Lansing.

COMPANY NEWS

The **Peckham Community Partnership Foundation** kicked off its annual celebration of National Disability Employment Month, through its bi-annual Speaker Series featuring best-selling author and mental health facilitator, Mike Veny on Wednesday, October 13. Veny is a Certified Corporate Wellness Specialist with presentations that move past simply educating an audience to providing them with actionable steps they can take to change their lives and work environments. His bestselling book *Transforming Stigma: How to Become a Mental Wellness Superhero* and *The Transforming Stigma Workbook* have become valuable mental health resources for people of all ages.

Martin Commercial Properties, a leading privately-owned real estate services and development company, has filled a 270,000-square-foot industrial building in Lansing. Martin facilitated two lease transactions with the State of Michigan and Kuehne + Nagel, Inc., each taking half. The property is located near GM's Lansing Delta Township and

Grand River Assembly Plants just two-and-a-half miles from I-496. The center is a cross-dock, fully sprinkled facility that is ideal for users in assembly, light manufacturing, and distribution. It includes 4,600 square feet of office space, 60 docks, and two grade-level doors.



LAFCU offered free document shredding to the public at the credit union's Shred Day, held on Saturday, Oct. 9 from 10 a.m. to noon, to reduce identify theft. A mobile shredding truck was set-up at LAFCU's West Lansing Branch, 106 N. Marketplace Blvd., for on-site secure destruction of personal documents. The paper was recycled. Each person able to drop off up to four Bankers Boxes of materials to be shred. Masks were required and social distancing measures was in place.



Cinnaire has announced the closing of a \$175.7 million Low Income Housing Tax Credit Fund that will finance the development or preservation of more than 1,648 affordable homes and 2,441 bedrooms in 5 states. Nine investors are participating in the fund, which is Cinnaire's largest multi-investor equity fund since 2016. Cinnaire Fund for Housing Limited Partnership 36 (Cinnaire F36) will support 20 properties in Illinois, Indiana,

Michigan, Minnesota, and Wisconsin. Twenty percent of the projects support residents with special needs.

Kelley Cawthorne, Michigan's leading bi-partisan government relations firm, announced it has again selected the City of Detroit as the location for its Southeast Michigan office. The firm has opened its new TechTown office. The new Kelley Cawthorne Southeast Michigan office is located at 440 Burroughs St., Suite 337, in Detroit.

On Friday, Oct. 1, **Capital Area Manufacturing Council (CAMC)** members visited schools throughout Ingham, Eaton, Clinton, Shiawassee, Livingston and Ionia counties to celebrate National Manufacturing Day. These K-12 presentations were part of a nationwide effort to change public perception about today's advanced manufacturing industry and draw attention to career opportunities available in this sector, highlighting modern technology and work environments. Each year, Manufacturing Day teaches students, parents and the public about modern manufacturing.

The Capital Area Humane Society is well on its way to improving how it protects and heals the homeless and abused animals in its care. The region's most progressive animal protection organization has launched the public and final phase of its Creating Hope, Completing Families Capital Campaign, a \$500,000 fundraising effort to meet its \$2.5 million overall goal by Nov. 19.

Michigan Medicine and Saint Joseph Mercy Health System, a member of Trinity Health, have announced a partnership with Lansing-based **Physicians Health Plan (PHP)** to bring a new choice in Medicare Advantage plans to Livingston and Washtenaw counties. The plans will be marketed under the name U-M Health + St. Joe's Advantage and are administered by PHP. U-M Health + St. Joe's Advantage will be available to Medicare-eligible residents of those counties during the Medicare Annual

Enrollment Period (AEP) beginning Oct. 15 for the 2022 calendar year.



OUTFRONT – Lansing has been confirmed as the vendor to advertise on all of the CATA Buses around Lansing & East Lansing. This is the first time in history that CATA is allowing advertising on these buses. OUTFRONT – Lansing plans to start rolling out these buses at the beginning of the new year.



Lansing Community College (LCC) joined the National Fallen Firefighters Foundation tribute to firefighters who died in the line of duty. LCC lit the Granger Clock Tower on the Downtown Campus, and the dome at West Campus red, in honor of some of America's bravest heroes. As darkness fell over the sky between Sept. 26 – Oct. 3, LCC landmarks glowed red for the fourth year in a row, with respect to fallen firefighters, first responders, and their families.

As part of its community outreach and giving efforts, **CASE Credit Union** recently presented Helping Hands Food Pantry with a check for \$4,362. The funds were raised by credit union employees throughout the second quarter of 2021. Helping Hands Food Pantry is a faith-based 501(c)(3) nonprofit operated almost entirely by volunteers. It provides a seven-day supply of groceries and personal care items free of charge to people in need from the community, regardless of their religious beliefs.

The **Salvation Army** in Lansing is kicking off the holiday season early this year! Red Kettles will start going out at stores and businesses in the tri-county area on Nov. 19 through Dec. 24. This year, each kettle will feature multiple ways to give: cash, checks, via QR code, or with Kettle Pay, which allows users to use Venmo, PayPal, Apple Pay, or Google Pay to make a secure donation. As many continue to struggle, particularly with pandemic poverty, the need for assistance continues to be on the rise. The Salvation Army Lansing Capital Area expects to serve a record number of children, adults, and families this holiday season and well into the new year. There are a variety of ways you can get involved and make a difference in our community.

Bekum America Corporation, North America's leading manufacturer of blow molding machinery, welcomed local high school students in-person to celebrate Manufacturing Day beginning on Friday, Oct. 1 at Bekum America, located at 1140 West Grand River Avenue in Williamston. Local high school students joined the Bekum leadership team for in person presentations and tours of the newly expanded state-of-the-art manufacturing facility.

McLaren Greater Lansing Hospital and the McLaren Greater Lansing Foundation recently celebrated a smoother road to health care with the dedication of Chi Drive at its new state-of-the-art health care campus in honor of Dr. Ki Whan Oh Chi and Dr. Seong Chi. The dedication recognized the many contributions of the doctors to McLaren Greater Lansing and the community during and after their tenure with the hospital community.

The **Michigan Osteopathic Association (MOA)**, the American College of Osteopathic Family Physicians and the American Osteopathic College of Radiology earned recognition. The AOA recently selected the MOA, the American College of Osteopathic Family Physicians, and the American

Osteopathic College of Radiology as the inaugural recipients of the Outstanding Affiliate Award. The Outstanding Affiliate Awards recognize state and specialty college affiliates that demonstrate innovation, creativity, resourcefulness and flexibility; highlight outstanding affiliate performance; recognize affiliate contributions that advance the osteopathic profession; and celebrate and share noteworthy programs and initiatives with all affiliates to encourage best practices.



The **MSU College of Music** officially realized a dream come true by cutting the ribbon on the Billman Music Pavilion—a state-of-the-art facility, purpose-built for music study, practice, and performance. On Friday, Oct. 1, the college celebrated the expansion and improvement of college facilities and included a music-filled open house. Crews completed much of the pavilion construction in the spring of 2020, but the pandemic caused delays in the celebration. The pavilion first opened to students and faculty in the fall of 2020 under Covid-19 safety protocols.

Volunteers of America Michigan, a social services organization and one of the state's largest service providers to veterans in Michigan, celebrated a grand re-opening of its thrift store located at 5411 S. Cedar Street, Lansing. Organizers commemorated the special occasion with a ceremony and ribbon cutting on Thursday, Oct. 14.

Holt Public Schools has received a grant to ensure students receive healthy options for breakfast and lunch. The 10 Cents a Meal for Michigan's Kids & Farms is a state program, which provides matching dollars to schools to purchase and serve Michigan-grown fruits, vegetables and legumes. The

program's goal is to improve nutrition for Michigan children in schools and childcare settings while also investing in Michigan agriculture. Holt Public Schools has received a grant of \$6,200 to support this program.

Chick-fil-A Lansing celebrated five amazing years of service to the Greater Lansing community on Wednesday, Oct. 13. A special ribbon-cutting ceremony was held with cookies and a handshake from everyone's favorite cow.

Siena Investments has joined Buckingham Strategic Wealth to further strengthen their focus on client service and shared philosophy of building and preserving wealth through sound financial planning, integrated tax services, and evidence-based portfolio management strategies. Founded in 2000 by Roger Millbrook and Stephen Hicks, Siena Investments is a fee-only fiduciary firm offering wealth management services to executives and other professionals, business owners, and retirees and their families in the greater Lansing area and beyond. The firm has been associated with Buckingham since 2000 through its partnership with Buckingham Strategic Partners, LLC, Buckingham's affiliated comprehensive wealth platform.

MSU Federal Credit Union is partnering with the Spartan Media Network and **WLNS 6 News** to provide a new weekly magazine-style television program for Spartan fans throughout Michigan. The "MSU Federal Credit Union Coaches Show" contains exclusive content and features officially affiliated with Michigan State University. The new program is 30 minutes of weekly original programming airing over 16 weeks, from Oct. 22, 2021 through Feb. 12, 2022, with hiatus weeks at Thanksgiving and Christmas. The show is a fast-paced, content-driven format featuring inside access to Michigan State University coaches, student-athletes, and narratives hosted by the WLNS 6 News Sports team. ●

CONSTRUCTION INSPIRED BY A COMMITMENT

We're building the next generation of medicine in Lansing. Our all new health care campus will advance patient care, safety, comfort and convenience. Visit mclaren.org/lansing for a preview.

OPENING MARCH 2022



DOING WHAT'S BEST™



LOOMIS

LOOMIS, EWERT, PARSLEY, DAVIS & GOTTING P.C.

A T T O R N E Y S A T L A W

FOR OVER 65 YEARS



**Providing Legal Strategies and Solutions for
the Success of Businesses and Individuals**

Grand Rapids Office:

180 Monroe Ave. NW

Suite 400

Grand Rapids, MI 49503

(616) 301-1200

Downtown Office:

124 W. Allegan St.

Suite 700

Lansing, MI 48933

(517) 482-2400



LANSING REGIONAL CHAMBER

The Stadium District
500 East Michigan Avenue, Suite 200 | Lansing, MI 48912
Ph. 517.487.6340 | lansingchamber.org

PRSR STD
U.S. POSTAGE
PAID
LANSING, MI
PERMIT NO. 689

Change Service Requested



Let's get down to business.

This one's for the builders, the makers, the creators. When it's time to turn your dream into a reality - come talk to us. Our team is ready to help you get down to business.



517.853.2700
mercbank.com

