

Legislative Life Science Caucus Tours

September 2017 – NCBioImpact Training
Program – BTEC, BioNetwork, BRITE



PURPOSES OF NC BIOIMPACT



- ▶ **Workforce Development**
 - ▶ **Ease Labor Shortage**
 - ▶ **Entry Level Workers with Commercial Scale Experience**
 - ▶ **New and Incumbent Workers**
- ▶ **Business Recruitment**
 - ▶ **Support Expansions**
 - ▶ **Recruit New Companies**

The labor shortage is clear. Community college and university graduates with hands on experience on commercial scale equipment are needed. Incumbent workers can learn new skills needed to fill higher level jobs.

NC STATE

bteec



**Golden LEAF Biomanufacturing
Training & Education Center**
Presented by: Gary Gilleskie, Acting Director

Impact of Academic Programs on NC

Master's students
who work in state
after graduation:
91%

Undergraduate
minors who work
in state after
graduation: **86%**



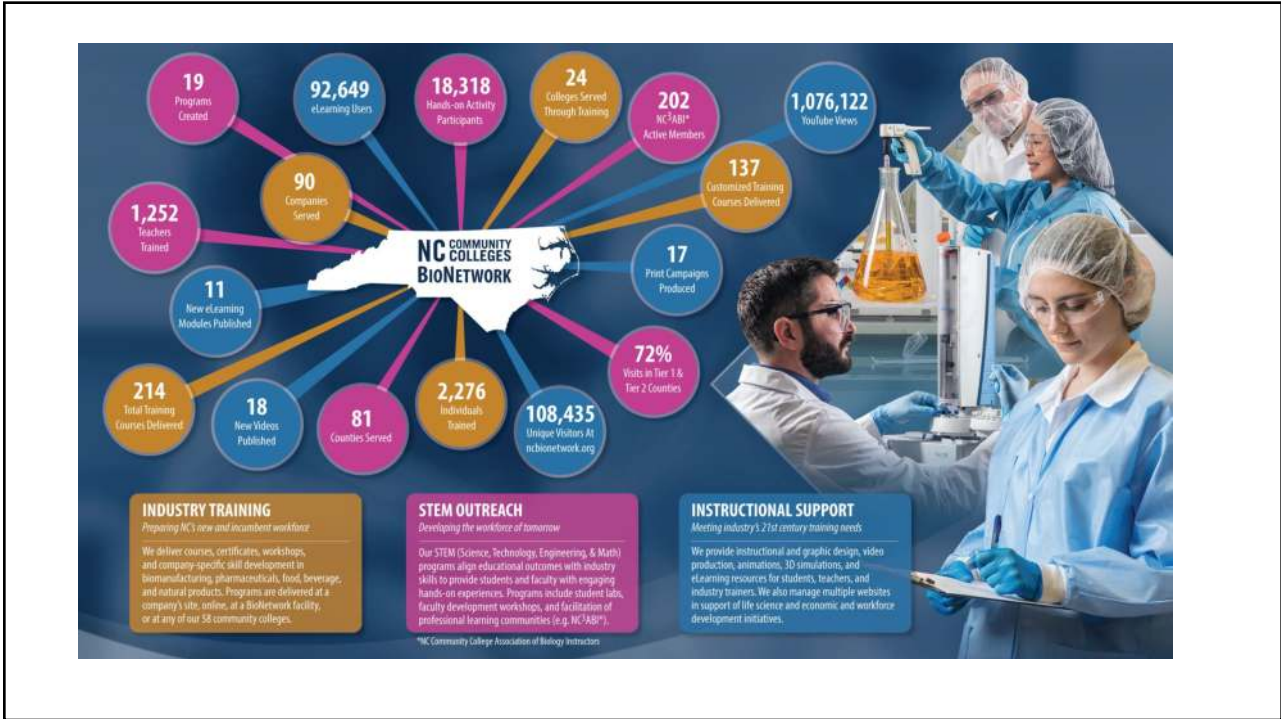
"...the number of people I recognize here [Biogen] from BTEC is just overwhelming! It is a great feeling running into someone you have seen before in class, even if I never spoke or interacted with them before. It has really helped me meet a lot of different people here and I love it!"
— 2017 masters graduate

5

*Training for today's industries
and tomorrow's innovations*

BioNetwork
NC Community Colleges
Creating Success in Life Science

ncbionetwork.org






WELCOME TO BRITE

N.C. LEGISLATIVE JOINT LIFE SCIENCE CAUCUS





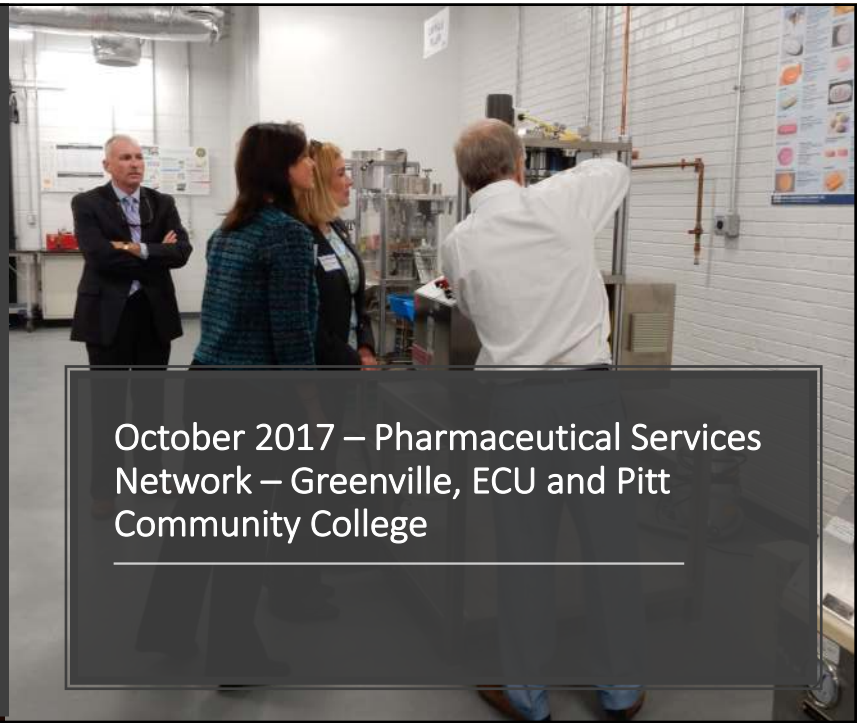
BRITE Enrollment 2012 – 2017

	2012	2013	2014	2015	2016	2017
BS	146	168	163	169	149	125
MS	28	17	14	17	18	18

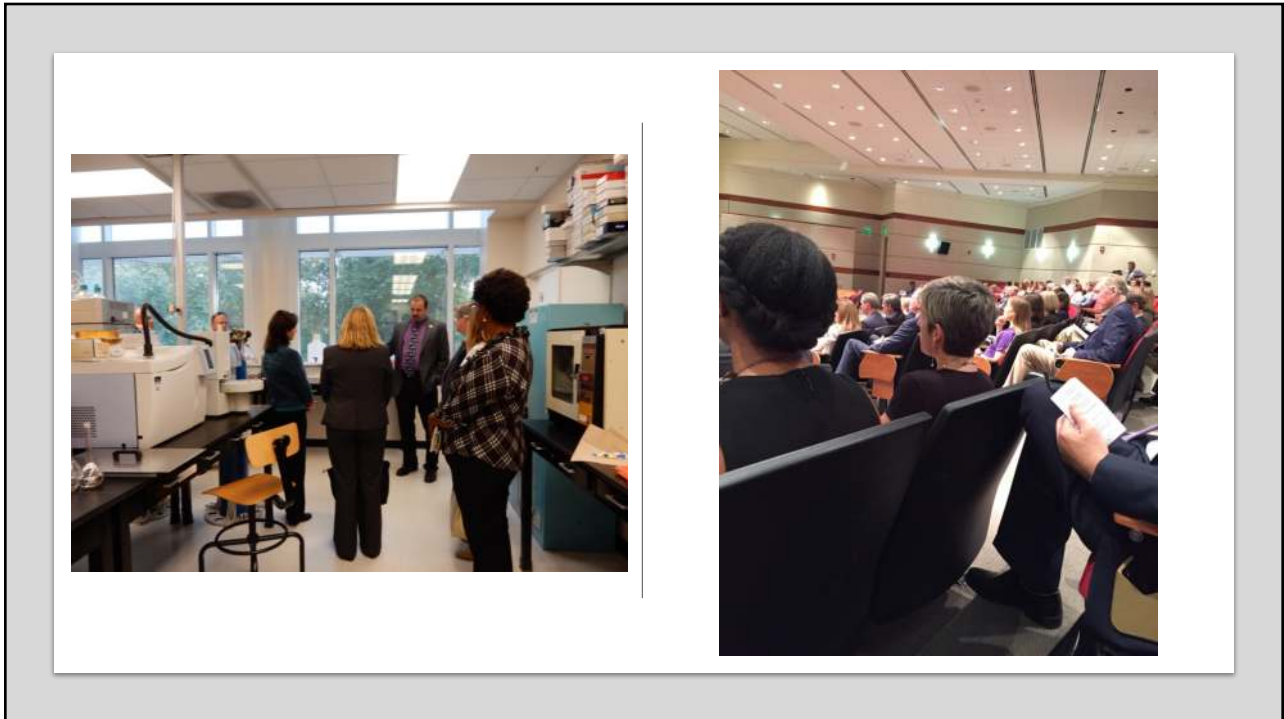
BRITE Graduation per year 2013 – 2016 BS & MS

	2013	2014	2015	2016
BS	17	23	31	28
MS	6	8	4	7





October 2017 – Pharmaceutical Services Network – Greenville, ECU and Pitt Community College



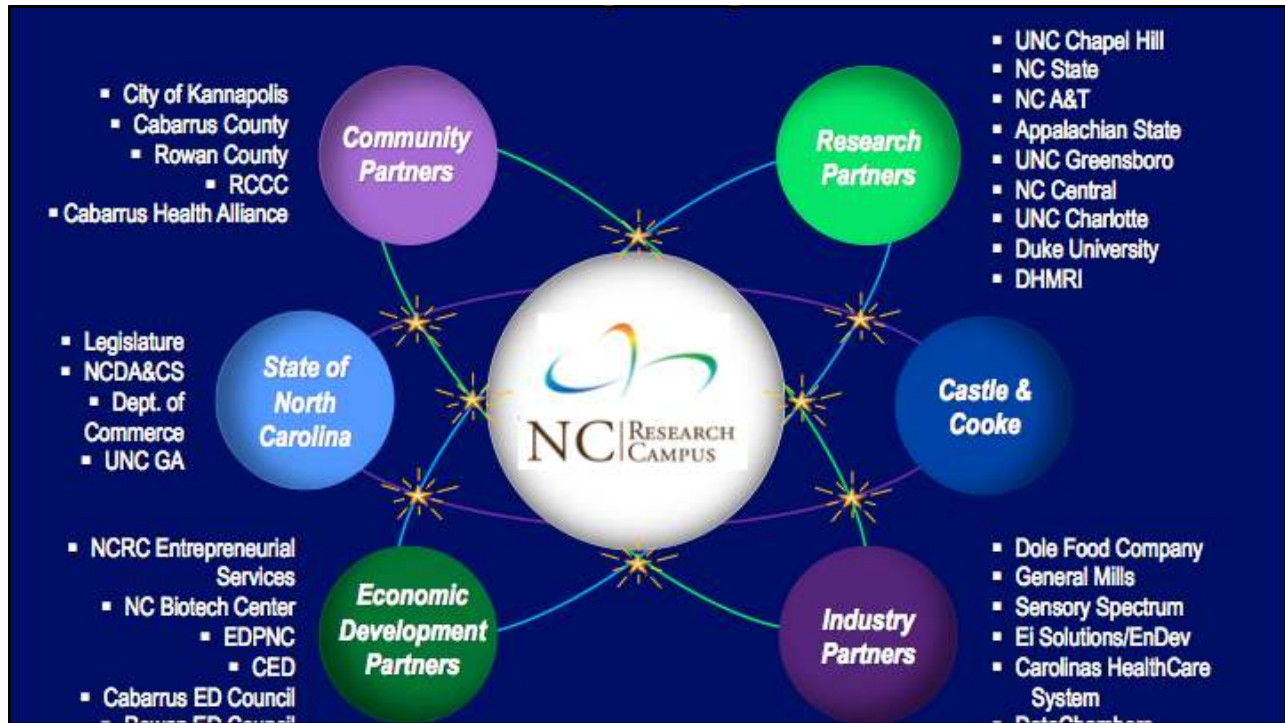


February 20, 2018 – Cook Medical and Wake Forest Innovation Quarter





March 20 – NC Research Campus - Kannapolis



NC STATE UNIVERSITY

NORTH CAROLINA FOOD PROCESSING INNOVATION CENTER AND PILOT PLANT INITIATIVE

*The potential to transform lives and communities through
development and application of food technology*



NC STATE UNIVERSITY
College of Agriculture
and Life Sciences

NC STATE UNIVERSITY
**Plants for
Human Health**
INSTITUTE






NUTRITION IS IMPORTANT

HEART DISEASE kills **614,248** Americans per year.

CANCER kills **591,699** Americans per year.

STROKE kills **133,103** Americans per year.

DIABETES kills **76,488** Americans per year.

KIDNEY DISEASE kills **48,146** Americans per year.

1,463,684
PREVENTABLE
DEATHS

We spend 86% of all healthcare dollars treating chronic conditions, many of which are preventable by better nutrition.

–Centers for Disease Control and Prevention







For more information about the tours:

<http://www.ncbioscience.net/LifeScienceCaucus>

