

North Carolina Central University

Human Nutrition Program

Xiaohe Yang, MD, PhD
Associate Professor

on behalf of

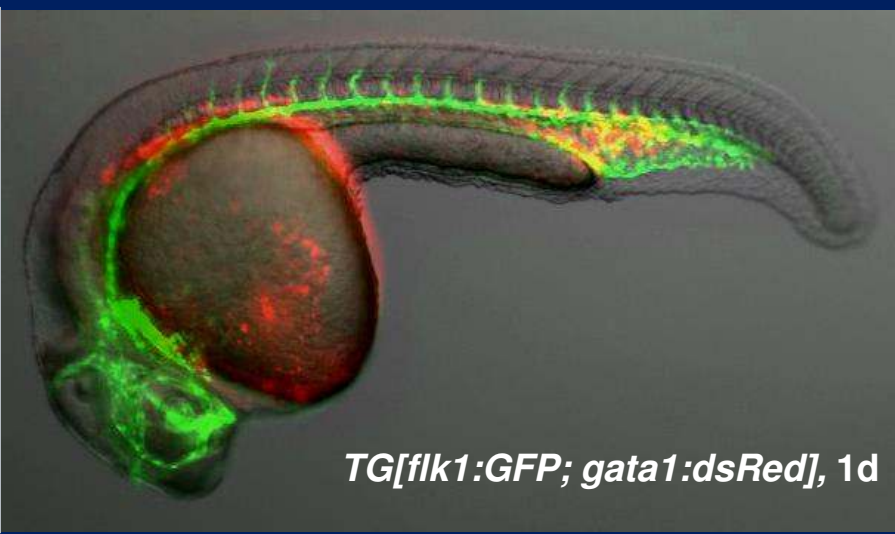
Dr. Deepak Kumar, PhD
Professor and Director
Biomedical/Biotechnology Research Institute (BBRI)



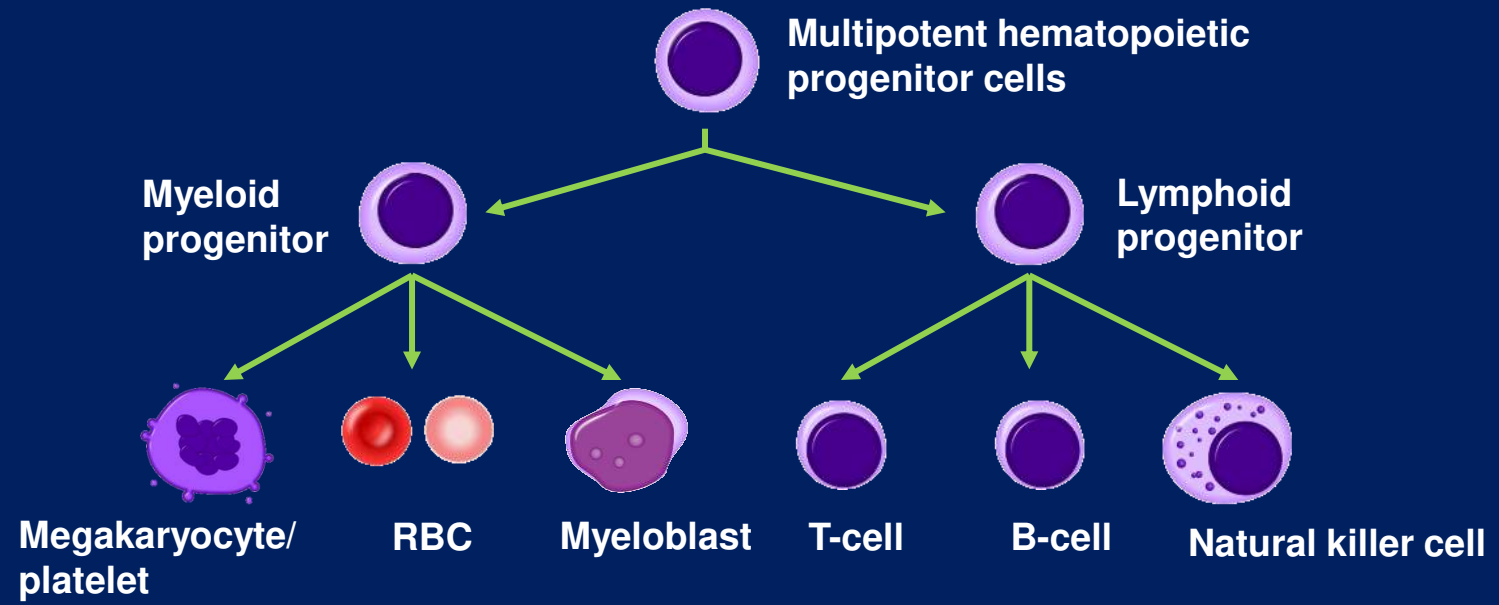
Three Laboratories

- Dr. TinChung Leung' Lab
 - Zebra fish models for blood development and cancer
- Dr. Xiaohe Yang's Lab
 - Breast cancer prevention and therapeutics
- Dr. Deepak Kumar's Lab
 - Tumor markers and health disparity
- Addressing human nutrition and disease-related scientific challenges with preclinical models.

Leung group: zebrafish model for natural product study - ginger root improved blood formation

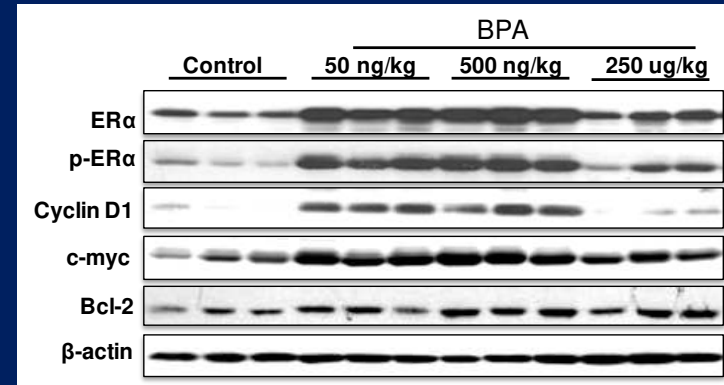
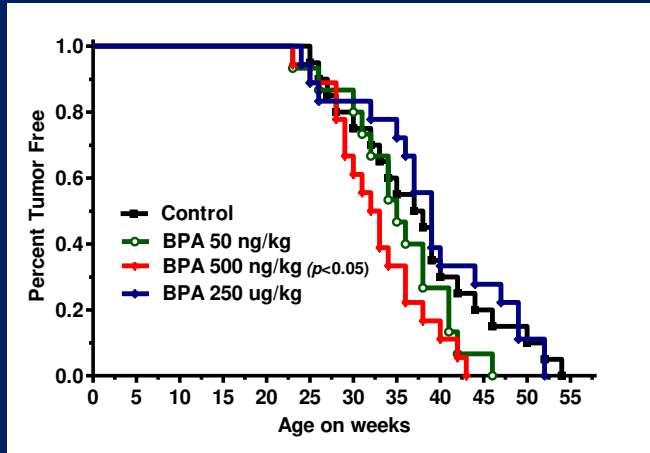


Mechanistic study of ginger effect on hematopoiesis



Yang Group

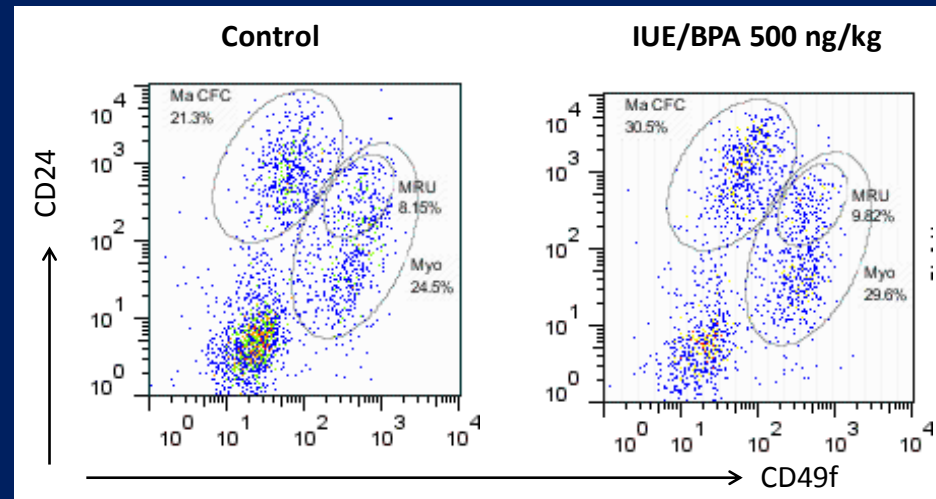
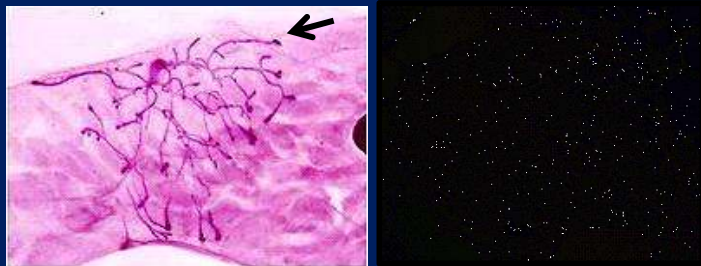
Hormonal and Dietary Modulation of Breast Cancer Risk and Prevention



Control



500 ng/kg
BPA



Kumar Group

Tumor Markers and Health Disparity

WUNC 91.5
NORTH CAROLINA PUBLIC RADIO®

91.5 Chapel Hill 88.9 Manteo
90.9 Rocky Mount 91.1 Welcome
91.9 Fayetteville 90.5 Buxton

Give♥Now

Bringing The World Home To You

LOADING...

NCCU Awarded \$16.3 Million Grant To Research Health Disparities

By LEONEDA INGE • OCT 10, 2017



Tweet



Share



Google+



Email

*Researchers working in the Julius L. Chambers
Biomedical/Biotechnology Research Institute at NCCU.*

CREDIT NORTH CAROLINA CENTRAL UNIVERSITY

minority communities.

The \$16.3 million grant is the largest grant awarded to the school's [Biomedical Biotechnology Research \(BBRI\) Institute](#).

Director Deepak Kumar says the five-year grant will initially focus on three areas: **breast cancer disparities; African-American men, stress and kidney disease; and**

The [National Institutes of Health](#) have awarded North Carolina Central University a multi-million dollar grant to further study health disparities in

Our Contribution to Local Community

- Apply for external findings
- Employment opportunities
- Training future minority scientists
- Collaborations among universities, campuses and external institutions

Thank You!