



The North Central Chapter

Society of Wetland Scientists

NORTH CENTRAL CHAPTER NEWSLETTER

Winter 2015/2016

A NOTE FROM OUR PRESIDENT

I hope everyone enjoyed a very, very, happy Holiday Season. The New Year is now upon us and I see a lot of exciting things coming down the 2016 road for the North Central Chapter. First along the way is the fund raising auction that will be happening this month (January) and that is detailed within this newsletter. The Chapter has a strong history of providing support to our student members through grants to help with research, travel funds to attend SWS meetings, support of diversity and mentoring efforts, and providing a forum for students and others to present results of their research at our annual meetings. However, all of these efforts cost \$\$\$\$. In fact, this year we will be awarding only a single student research grant (normally we award two) due to budget constraints.

One way to help ease these budgetary restrictions and allow us to continue to provide student support is to increase funds coming into the Chapter. Along these lines, I am happy to report that we have been successful in getting the SWS Board of Directors to approve an increase of funds coming to Chapters from \$5 per member to \$10 per member. This will help build stronger Chapters across SWS and translates into about an \$1,800 increase in funds for the NCC. However, in order to fully fund our student support efforts, additional funds are still needed. Thus, the origins of the fund raising auction described in this newsletter. We have already received great support from our members in the form of the many donated items in the auction. Now others can help do their part by bidding on, and hopefully winning, the item(s) of their choice.

The items in the auction are detailed in this newsletter. Additional details can be found in the listing for each item on eBay. The Auction runs January 13th to the 23rd. So please help the Chapter and bid on an item or two, or three, or more. As an alternative, if you would prefer to make a direct donation to the Chapter without bidding in the auction, you can do so on the Chapter's webpage at www.sws.org/North-Central-Chapter. Just click on the donate button and follow the instruction provided. If your donation is \$20 or more and your donation is made during the month of January, you will receive a print from Chapter Member and photographer, Joy Marburger (see later in the newsletter for instruction on how to obtain the print of your choice from Joy).

Before signing out, I want to make sure that everyone begins thinking about attending our 2016 Annual Meeting. This year's meeting is being organized by NCC President Elect, Julie Nieset and will be held in Ohio. Our Annual Chapter Meetings are always a good way to network and learn more about wetlands

within the North Central U.S., so please plan on attending. Your support and participation in Chapter events is what makes a healthy, growing Chapter that benefits not only our members but also the entire Society of Wetland Scientists community.

Wishing You a Wonderful, Prosperous, and Happy New Year!

Dave Mushet, NCC President

NCC-SWS FUND RAISING AUCTION ON EBAY

We would first like to thank everyone who donated items for our fund raising auction. As you will see, we have many quality items for your consideration. All funds from this auction will go towards the North Central Chapter's commitment to supporting graduate and undergraduate students studying wetlands science. Specific activities that will benefit from your participation in the auction include the awarding of student research grants, support of student travel to SWS meetings, and Chapter support of the SWS undergraduate mentoring program. Thus, you can do a lot of good, while simultaneously winning some really cool auction items.

How to bid:

Items will be listed on eBay on Wednesday January 13. The auctions will run for 10 days, ending on Sunday January 23. To find the items on eBay, search for NCC-SWS. Once you find one, just click on "other items for sale by this seller" to see the rest. Bid following normal procedures outlined on eBay and pay for any items that you win after the auction close using PayPal. Your item(s) will be shipped to you after payment is received. Note, all individuals donating items to the auction are also donating the cost of shipping that item to you. So what you bid is the actual amount that you will pay. Thanks you again to the generosity of the donors.

THANK YOU FOR SUPPORTING YOUR CHAPTER!

AND HERE ARE THE ITEMS THAT CAN BE YOURS:

Auction Item #1 NCC-SWS Auction Wetland Mitigation Book by Gary J. Pierce

Donated by the Wetland Training Institute, Inc.

Starting Bid: \$50 (Published Price is \$100)

Wetland Mitigation: Planning Hydrology, Vegetation, and Soils for Constructed Wetlands by Gary J. Pierce with contributing editors Mallory N. Gilbert and Robert J. Pierce

For those who work in wetlands, it is the A to Z of construction and restoration. It focuses on the importance of water to wetland construction. As Dr. Paul Keddy writes in the Foreword to *Wetland Mitigation*:

Half of the challenge, as *Wetland Mitigation* tells us, is simply getting the water right. Too much flooding, or too little flooding, can have disastrous effects on the survival of populations and emergence of communities. Now note the first two words in the sub-title. *Planning hydrology*. Get the hydrology right, this book says, and you are well on your way. It is a strong foundation. Get the water wrong, and you are heading for failure, or even disaster. This book has four entire chapters on water, all dealing one way or another with the hydrograph. A hydrograph is an essential tool for getting the water right.

Other chapters detail the importance of setting goals for construction planning, preparing hydrographs and managing substrate and subgrade. Purchase of the book enables access to a secure link with pre-formulated Excel Spreadsheets and other information. The book provides models for wetland construction, discusses plants to include, where to get them, and how to plant them. Filled with full color photos and illustrations, graphs and tables, the book will quickly become your most important resource for wetland construction and restoration.

Purchase of the book entitles the buyer to access a secure website that contains an Excel program to prepare annual hydrographs based on monthly data sets. An instruction guide accompanies the program. The software allows a wetland designer to generate hydrographs that can be used for site evaluation and in preparing site grading plans. The Excel program can be readily modified to accommodate more sophisticated calculations and assumptions.



In summary, we need more restoration to repair the damage we have caused. But there is another more practical purpose for reading this book— to save money. That is, to make wetland restoration simple and effective and predictable. ... Overall, this book is a fresh and bold statement that there are some simple steps we can take to increase our success in wetland restoration. This will generate not only profit, it will begin a cascade of benefits for all the other species that will eventually live there. So this is also a book, indirectly, about sedge-wrens, and Blanding's turtles, and spotted salamanders, and amphiumas, and alligators. I'm confident that if they could speak, they too would encourage you to read and contemplate the important and constructive lessons in *Wetland Mitigation*.

*Dr. Paul Keddy - Fellow of the Society of Wetland Scientists
from the Foreword to Wetland Mitigation*

If you are not the successful bidder in this auction and would like a copy of *Wetland Mitigation: Planning Hydrology, Vegetation, and Soils for Constructed Wetlands*, go to the Wetland Training Institute store at: <http://wetlandtraining.tictail.com/>

Auction Item #2 NCC-SWS Auction \$25 Papa John's Gift Card

Donated by NCC Member Julie Nieset

Starting Bid: \$35

This is one of four \$25 gift cards that Julie has donated to the North Central Chapter—SWS. Bidding on these gift cards provides a unique way for you to increase the effect of a donation to the Chapter. Note that the starting bid is \$10 greater than the face value of each gift card. What this means is that if you bid on and win a card for \$35, you will be receiving a \$25 gift card in return. Thus, the Chapter will receive \$35 to go towards student support activities and the net cost to you is \$10 (\$35 minus the \$25 value of the gift card you will receive). This is your chance to make your donation to the Chapter go much farther, i.e., \$25 farther than the actual amount of your donation. So please consider bidding on one, or several of the gift cards.



\$25 Papa John's Gift Card

Auction Item #3 NCC-SWS Auction \$25 Bass Pro Shops Gift Card

Donated by NCC Member Julie Nieset

Starting Bid: \$35

This is one of four \$25 gift cards that Julie has donated to the North Central Chapter—SWS. Bidding on these gift cards provides a unique way for you to increase the effect of a donation to the Chapter. Note that the starting bid is \$10 greater than the face value of each gift card. What this means is that if you bid on and win a card for \$35, you will be receiving a \$25 gift card in return. Thus, the Chapter will receive \$35 to go towards student support activities and the net cost to you is \$10 (\$35 minus the \$25 value of the gift card you will receive). This is your chance to make your donation to the Chapter go much farther, i.e., \$25 farther than the actual amount of your donation. So please consider bidding on one, or several of the gift cards.



\$25 Bass Pro Shops® Gift Card

Auction Item #4 NCC-SWS Auction \$25 Starbucks Gift Card

Donated by NCC Member Julie Nieset

Starting Bid: \$35

This is one of four \$25 gift cards that Julie has donated to the North Central Chapter—SWS. Bidding on these gift cards provides a unique way for you to increase the effect of a donation to the Chapter. Note that the starting bid is \$10 greater than the face value of each gift card. What this means is that if you bid on and win a card for \$35, you will be receiving a \$25 gift card in return. Thus, the Chapter will receive \$35 to go towards student support activities and the net cost to you is \$10 (\$35 minus the \$25 value of the gift card you will receive). This is your chance to make your donation to the Chapter go much farther, i.e., \$25 farther than the actual amount of your donation. So please consider bidding on one, or several of the gift cards.



\$25 Starbucks Card

Auction Item #5 NCC-SWS Auction \$25 iTunes Gift Card

Donated by NCC Member Julie Nieset

Starting Bid: \$35

This is one of four \$25 gift cards that Julie has donated to the North Central Chapter—SWS. Bidding on these gift cards provides a unique way for you to increase the effect of a donation to the Chapter. Note that the starting bid is \$10 greater than the face value of each gift card. What this means is that if you bid on and win a card for \$35, you will be receiving a \$25 gift card in return. Thus, the Chapter will receive \$35 to go towards student support activities and the net cost to you is \$10 (\$35 minus the \$25 value of the gift card you will receive). This is your chance to make your donation to the Chapter go much farther, i.e., \$25 farther than the actual amount of your donation. So please consider bidding on one, or several of the gift cards.



\$25 iTunes® Gift Card

Auction Item #6 NCC-SWS Auction "The Frog Pond" Handmade Quilted Wall Hanging

Donated by NCC Member Dave Mushet
(and wife, Kathy)

Starting Bid: \$50

This quilted wall hanging was created by Chapter President Dave Mushet, with not an insignificant amount of help from his talented quilting wife, Kathy. The wall hanging measures 45 inches high by 40 inches wide and was designed to represent a frog pond in a green field. The quilting method used in the center creates a kaleidoscope of colors from the material used in the surrounding border. The quilting tying it all together creates a pattern of dragonflies over the pond.



Auction Item #7 NCC-SWS Auction Prismacolor Print of Original Artwork by Joy Marburger

Donated by NCC Member Joy Marburger

Starting Bid: \$30

This item is an 8 X 10 inch prismacolor print of “Three Apples,” an original piece of artwork by North Central Chapter—SWS member and Member of the Board, Joy Marburger. Just add a frame and this original piece of artwork will look wonderful on your wall.



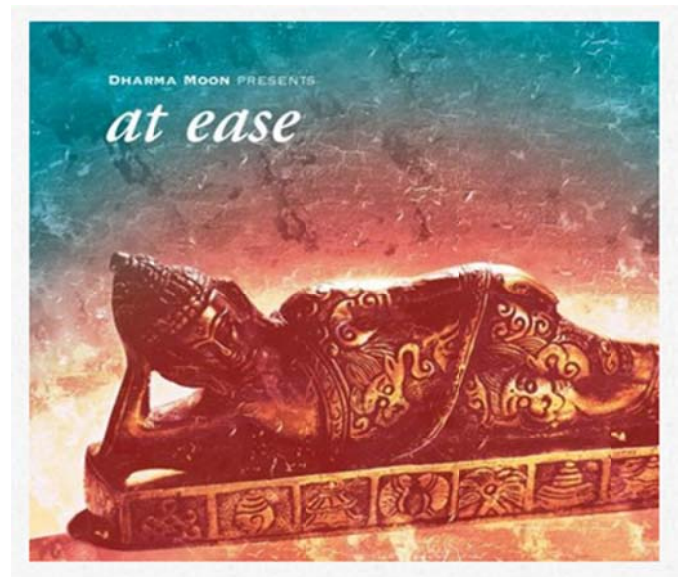
Auction Item #8 NCC-SWS Auction “At Ease” CD by Dharma Moon

Donated by NCC Member Julie Nieset

Starting Bid: \$5

CD – “At Ease” by Dharma Moon, New, in original packaging, 2006

Win this CD and you can settle back for a serene listening experience that transports the imagination to a peaceful place and seduces the body to surrender to a world of blissful tranquility. “At Ease” features ten world-acclaimed musicians with nine gentle tracks that cross the boundaries between world music, fusion, contemplative, and pop and will soothe you with guitar, synthesizer, vocals, percussion, flute, violin, and more. And you will be helping the North Central Chapter of the Society of Wetland Scientists to boot.



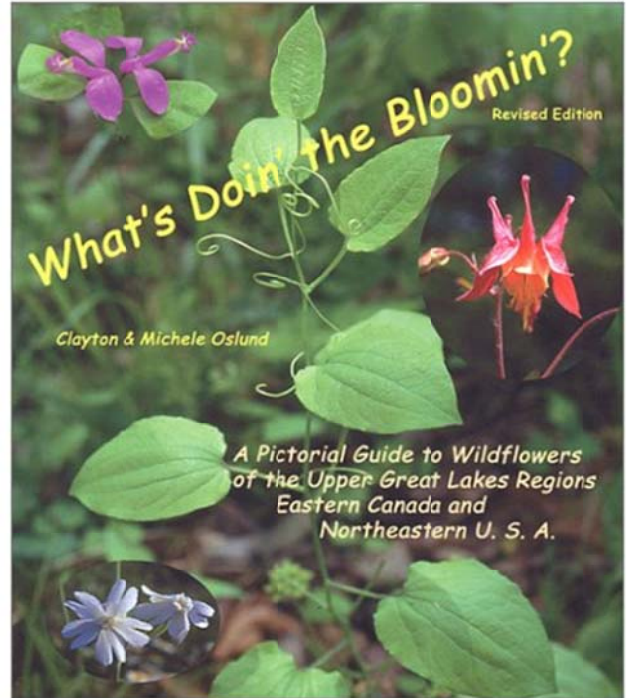
Auction Item #9 NCC-SWS Auction What's Doin' the Bloomin' by Clayton and Michele Oslund

Donated by NCC Member Julie Nieset

Starting Bid: \$10

What's Doin' the Bloomin'. Revised Edition. 2002. Clayton and Michele Oslund, Corporate Graphics, Mankato, MN.
Condition: Gently used.

Win this item and you will receive a pictorial field guide to wildflowers, organized by season of bloom, for the Upper Great Lakes Regions, Eastern Canada and Northeastern USA. What's Doin' the Bloomin' is a comprehensive guide with over 340 species of native and naturalized plants, it is illustrated with more than 620 full color photos showing flowers, stems and leaves, fruits and habitat to better aid in identification. Sections on grasses and sedges, vines, flowering woody plants and ferns are included. Each species is described and identified by common and scientific names. Short guides to the naming of plants and how to use the book get the reader off to a fast start to use it efficiently. A section describing plant families along with indexes of common and scientific names and a bibliography round out the book. The Smyth-sewn binding and laminated cover give it durability.

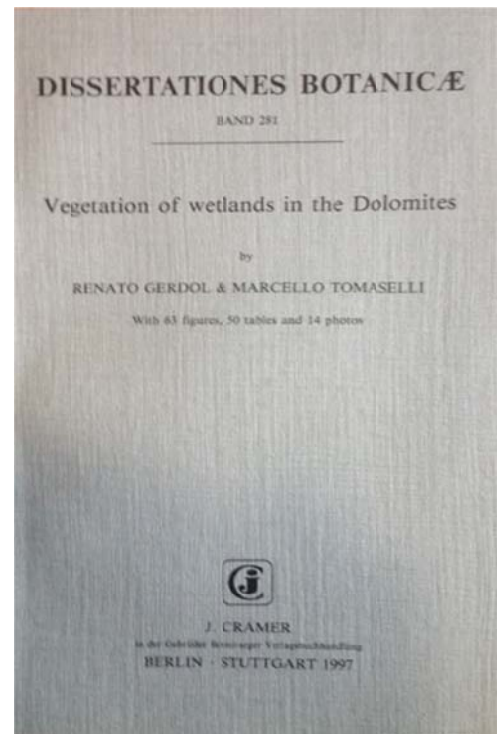


Auction Item #10 NCC-SWS Auction Vegetation of Wetlands in the Dolomites by R. Gerdol and M. Tomaselli

Donated by Anonymous

Starting Bid: \$10

The last auction item is a 1997 publication of *Dissertationes Botanicae* on "Vegetation of Wetlands in the Dolomites" by Renato Gerdol & Marcello Tomaselli. This 197 page monograph presents the results of a detailed study of over 100 wetlands in the Dolomites of northern Italy, with four main objectives: 1) to produce a detailed classification of wetland vegetation in that region, 2) to examine the causal relationships between vegetation and environment, 3) to define vegetation patterns in relation to site characteristics and dynamics, and 4) to outline the performance of the commonest species along ecoclines. This is your chance to own this hard to obtain monograph which includes 63 figures, 50 tables, and 14 photos.



And an Alternative Way to Donate to the North Central Chapter

If you would like to donate to the NCC but either are unsuccessful in your bidding or just did not see the item that you could not live without, Joy Marburger is providing an alternative for you. In addition to donating the “Three Apples” artwork (Item #7), Joy will also provide a print of some of her original photos to anyone who makes a donation of \$20 or more to the Chapter during the month of January. The three photos, see below, are “Canadian Wet Prairie – Quebec,” “Luna Moth” and “Sandhill Cranes in Cowles Bog.” Joy will provide a 5 X 7 inch print of the photo of your choice to anyone donating \$20, an 8 X 10 inch print to anyone donating \$30, and 8 X 10 inch prints of all three photos to anyone donating \$60 or more during the month of January. So you can make a donation to the Chapter and receive a print of an original photo from Joy as a thank you for your support. If you would like to take Joy up on this very special offer, make a donation now by clicking the donate button at <http://www.sws.org/North-Central-Chapter>. After making your donation, send Joy an email at jmarburg@frontier.com informing her of the amount of your donation and the print(s) that you would like. Joy will send you your print(s) as a special thank you for your support of the North Central Chapter and its student support efforts. Thank you Joy for making your artwork available to the members of the North Central Chapter in this unique way.



ANNUAL CHAPTER MEETING

SAVE-THE-DATES: September 8-10th, 2016. Partnering with the Ohio Wetland Association we will be holding our annual chapter meeting in NE Ohio this year. Despite many human-induced changes to wetlands in our region, Northern Ohio sports a number of high quality wetlands, including fens, bogs and freshwater estuaries along Lake Erie. Come learn about these wetlands, discover how glaciation helped to shape them, what state and national assessments are telling us about the past and current conditions of our regional wetlands, and more! Further information will be revealed in subsequent newsletters and emails.

WORLD WETLAND DAY

Don't forget World Wetlands Day is coming up on February 2, 2016. RAMSAR has a webpage with ideas for community activities celebrating wetlands, and there is a photo contest for youth. Fliers are available from the website promoting wetland conservation. <http://www.worldwetlandsday.org/>

NOTES FROM AROUND THE NORTH CENTRAL REGION

ILLINOIS (State Contacts, Jessie Ackerman, jracker@illinois.edu)

This fall, restoration has begun at the 283-acre addition to the Ramsar-designated Dixon Waterfowl Refuge at Hennepin & Hopper Lakes in North-central Illinois. The addition was purchased in December 2014. The goal is to create a high-quality prairie, savanna, and woodland system that will buffer Dore Seep, an Illinois Nature Preserve, as well as provide habitat for threatened and endangered birds. Dore Seep is the largest wetland of its kind in the central Illinois River Valley. The Dixon Waterfowl Refuge is also unique in that it is the only Ramsar wetland in the US that is entirely a restoration.

<https://wetlands-initiative.org/news-events/237-dixon-waterfowl-refuge-new-tract.html>

Thanks to Julie Nieset, for the news above, and for this helpful information for wetland botanists in IL: The Illinois Plants website and database <http://www.inhs.illinois.edu/data/plantdb> is a new online resource for botanists. The website includes detailed information about plant taxonomy, plant traits, flowering dates and distributions of native, invasive, and ornamental plants. There are currently more than 10,000 plant localities from plant records from various state institutions and herbariums. For more information see the October 2015 Illinois Natural History Report No. 413(10) at

http://www.inhs.illinois.edu/files/3714/4372/5742/INHSReports_October2015_IllinoisPlants.pdf

MICHIGAN: (State Contact, Kurt Kowalski, kkowalski@usgs.gov)

Invasive cattails are being harvested experimentally to improve habitat and explore use of the cut biomass as biofuel or fertilizer in upland areas.

(<http://www.ns.umich.edu/new/multimedia/videos/23064-harvesting-invasive-cattails-to-restore-marsh-biodiversity>) Also, checkout the latest landscape-scale research projects funded by the Upper

Midwest and Great Lakes Landscape Conservation Cooperative (<http://greatlakeslcc.org/research-projects/>) or a report on the loss of wetlands in Michigan since 1800

(<http://michiganradio.org/post/mapping-michigan-wetland-loss>).

NORTH DAKOTA: (State Contact, Dave Mushet, dmushet@usgs.gov)



OHIO: (State Contact, Hugh Crowell, hcrowell@hullinc.com)

The Ohio Wetland Association (OWA) hosted a Wetland Summit at Dawes Arboretum in Newark Ohio on October 17, 2015. Speakers included experts from The Nature Conservancy, Wright State University, Ohio Environmental Council, Midwest Biodiversity Institute, Ohio Greenways, and the OWA. Topics covered various aspects of wetland policy and protection. After the presentations, participants visited the Arboretum's Dutch Fork Wetlands, a restored 70-acre wetland/grassland mitigation site.

Additionally OWA recognized four organizations who have made exceptional contributions in the advocacy, protection, restoration, and education of Ohio Wetlands. The 2015 Ohio Wetland Leaders Awards recipients included: The Ohio Environmental Council (Leader in Wetland Advocacy), The Winous Point Marsh Conservancy (Leader in Wetland Protection), The North Coast Regional Council of Park Districts (Leader in Wetland Restoration), and Edge of the Farm Conservation Area (Leader in Wetland Education). More information can be found <http://www.ohwetlands.org/ohio-wetland-leader-awards.html>

Save The Dates - The 2016 Ohio Vernal Pool Partnership will be offering the following workshops in 2016: March 26 at Dawes Arboretum, Newark, Ohio and April 9 at The Wilderness Center, Wilmot Ohio. More information will be forthcoming on the OWA website.

The Rieck Center for Habitat Studies, University of Findlay, along with the Hancock Soil and Water Conservation District and Blanchard River Watershed Partnership recently restored and enhanced a seven-acre floodplain wetland complex south of Findlay, Ohio. <http://thecourier.com/local-news/2015/11/23/riek-center-wetlands-project-completed/>

WISCONSIN: (State Contact, Laura A.B. Giese, lgiese@trcsolutions.com)

1) Wisconsin Wetland Association's 21st Annual Wetland Science Conference will be held February 23-25, 2016 in Green Bay, WI. This year's theme is Wetland Solutions. Key speakers include: H.J. "Bud" Harris, Leigh Fredrickson, and Robin Wall Kimmerer. For more information check the following link <http://conference.wisconsinwetlands.org/>

2) Another Ramsar site for Wisconsin: Chiwaukee Prairie has been recognized as a 'Wetland of International Importance' September 2015. The Chiwaukee Prairie covers 3,700 acres along Lake Michigan, stretching from Kenosha to northeastern Illinois, with 477 acres in Wisconsin. Wetlands in Door and Ashland counties, along the Mississippi River, and in Horicon Marsh already have a Ramsar designation. Check the following links for more information:

<https://www.uwp.edu/explore/news/chiwaukisonline.cfm>

<http://www.wpr.org/listen/820556>

3) Wisconsin's Wetland protection laws are under attack – Again? According to the Wisconsin Wetland Association, wetland protection laws are under attack:

<http://archive.constantcontact.com/fs117/1011068925784/archive/1123061116001.html>

The following November 29, 2015 article also paints a dire picture:

http://host.madison.com/news/local/environment/replacement-of-filled-wetlands-awaits-restoration-of-new-banks/article_a09ea66d-c433-5f99-b6eb-007fe4b7980e.html

The proposed bill, which makes various changes to the regulation of navigable waters, artificial water bodies, wetlands, and nonpoint source pollution, can be found at the following link:

<http://docs.legis.wisconsin.gov/2015/related/proposals/ab600>

MINNESOTA: (State Contact, Elizabeth Markhart, bmarkhart@comcast.net)

NEBRASKA: (State Contact, Ted LaGrange, ted.lagrange@nebraska.gov)

SOUTH DAKOTA: (State Contact, Carol Johnston, Carol.Johnston@sdstate.edu)

INDIANA: (State Contact, Liz Pelloso, pelloso.elizabeth@epa.gov)

IOWA: (State Contact, Melinda Coogan, coogan@bvui.edu)

If you have an item for a future issue of the NCC newsletter or correction, please send an email with *newsletter* in the subject line to the Newsletter Editor: Jennifer Boyer (jen.boyer@dupageco.org)

NCC-SWS OFFICERS

David Mushet, President

Julie Nieset, President-Elect

Arnold van der Valk, Immediate Past President

Jessica Ackerman, Secretary/Treasurer

Liz Pelloso, At-Large Board Member

Joy Marburger, At-Large Board Member

NCC-SWS COMMITTEE CHAIRS

Julie Nieset, Program Committee

Arnold van der Valk, Nominations Committee

Jessica Ackerman, Membership Committee

Karen Mangan, Grants and Awards Committee

WEBSITE <http://www.sws.org/North-Central-Chapter>