



Your Seminole. **YOUR CHAMBER.**



WHY I'M A MEMBER

“Our membership has been the single most important investment we have made for our business.”

Michael & Sheila Kramer,
Lake Mary Life Publishing Inc.



ADVOCATE Membership Track

The Advocate Membership Track provides its members the opportunity to participate in many Chamber initiatives without further investment. It is specifically designed to showcase the businesses and organizations vital to the success of Seminole County and the Central Florida region.

The future growth of the community is a partnership between the Seminole County Chamber and you. Included in these membership levels are all CORE membership benefits, as well as significantly enhanced features to maximize your engagement and exposure opportunities.

	Trustee	Chairman	President	Executive
CORE Membership Package (See right for details)	Included	Included	Included	Included
Admission to State of the County	Four	Four	Two	One
Admission to Seminole Business Awards	Four	Four	Two	One
Admission to Seminole Business Awards VIP	Four	Two	One	
Admission to Three (3) Professional Women's Luncheons	Four	Four	Two	One
Admission to Mayors Update	Four	Four	Two	One
Admission to Legislative Update	Four	Four	Two	One
Admission to Annual Meeting	Four	Four	Two	One
Reserved table at Good Morning Seminole	Two	One		
Locations/brands eligible for benefits	Fifteen	Ten	Five	Three
Banner advertisement on website	Four weeks	Two weeks	One week	One week
Banner advertisement on newsletter	Four weeks	Two weeks	One week	
Ribbon Cutting	One	One	One	One
Enhanced Listing	Included	Included		
Press Release (per week)	Two	Two	Two	One
Sponsorship credits	\$6,500	\$2,500	\$1,500	
Company inclusion on all newsletters	Logo	Text		
Company inclusion on all general chamber collateral	Logo	Text		
Company inclusion at all chamber events	Logo	Text		
Printed mailing labels	Six	Four	Two	
Digital mailing labels	Six	Four	Two	
Seat on Board of Directors for C-level Executive	One			
Value	\$31,589	\$22,423	\$14,927	\$11,179
Lump Sum Investment	\$11,900	\$5,900	\$3,000	\$1,200

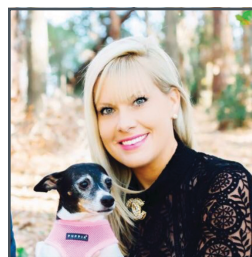
MOST POPULAR



WHY I'M A MEMBER

"The Seminole Regional Chamber is one of the most active and engaged chambers I've ever been associated with."

Richard Kerr
Insurance Office of America



WHY I'M A MEMBER

"As a Seminole County resident, the Chamber has allowed me to develop new and lasting relationships within our beautiful community."

Kelly Rogers
Findsome & Winmore

Effective January 2023 | All benefits subject to change | \$50 fee is charged to process new members
Non-profit companies with less than 25 employees are eligible for a 50% discount on the Entrepreneur level and must submit their C3 documentation with application

ENGAGE Membership Track

The Engage Membership Track provides smaller companies ample exposure opportunities, access to information that impacts their businesses, and abundant opportunities to develop professional relationships throughout Seminole County. Depending on the level of your choice, you can participate in the Expo, events, digital media opportunities, and more; without any additional financial investment.

For many Chamber members supporting our mission – providing programs, services and leadership to enhance economic vitality and quality of life in our community – is reason enough to join. For those who desire a more direct return on your investment, the Engage Membership Track is the place to start.

	Partner	Entrepreneur
CORE Membership Package (See right for details)	Included	Included
Admission to Seminole Business Awards	Two	
Standard booth at the Seminole Business Expo	Included	
Banner advertisement on website	One week	
Press Release (per week)	One	One
Value	\$10,130	\$9,690
Lump sum investment	\$840	\$420

CORE Membership Package:

Included in this package is:

- Admission to:
 - ChamberU
 - Good Morning Seminole
 - Business After Hours
 - Altamonte Small Business Networking
 - Business Alliance Business Networking (\$15 for Lunch)
 - Lake Mary Council Coffee Club
 - Longwood Lunch & Learn (\$15 for Lunch)
 - River Council Business Networking
 - South Seminole Business Networking
 - Virtually Seminole Council
- Reduced admission to Signature events
- Member plaque, decal & "Proud Member" online badge
- Collateral display inclusion at Good Morning Seminole
- Affinity and member savings:
 - Healthcare, credit card processing and office supply savings
- Website listing for your:
 - Business
 - Special offers
 - Events
 - Announcements
- Newsletter placements for your:
 - Special offers
 - Events
 - Announcements
- Leadership opportunities on committees and councils
- Certificate of origin

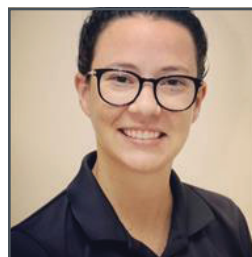
Join Now at SeminoleBusiness.org



WHY I'M A MEMBER

"Long-term relationships are critical to an insurance agency and the Chamber is a key to fostering those relationships."

Mike Brockman
Brockman Insurance



WHY I'M A MEMBER

"The Seminole County Chamber has been a huge blessing with growth, professionally and personally."

Kate Olsen
Your CBD Store Longwood and Lake Mary

Effective January 2023 | All benefits subject to change | \$50 fee is charged to process new members

Non-profit companies with less than 25 employees are eligible for a 50% discount on the Entrepreneur level and must submit their C3 documentation with application

Additional location listings are not available on the Engage Membership Track

More Visibility:

- **Shared Collateral Table:** Bring flyers, coupons and business cards for the shared collateral table with other members to bring awareness and new customers to you.
- **Seminole Business Expo Booth:** Members have a unique opportunity to reach more new customers through their membership with a booth at the Seminole Business Expo.
- **Enhanced Listing:** Upgrade your page to include: Logo | Photos | Priority Placement in the Online Business Directory | 1600 Character Business Description | Additional 200 Character Description right in the Search Results.
- **Email Banner Ads:** This advertising opportunity provides your company exposure to our 9,000+ email database twice a week through digital banner ads linking directly to your site.

Mission:

To serve the interest of our members and the business community by providing programs, services and leadership to enhance economic vitality and quality of life in our community.

Vision:

Be and be recognized as the most dynamic Chamber in the country.

2022 Highlights



SOCIAL MEDIA

71,000 reached on Facebook and Instagram



NETWORKING IN ACTION

151 small networking events



MARKET

14,700 reads of member news



GROWING STRONGER TOGETHER

191 businesses joined



FOUND HERE

46,000 community events searched



AWARD WINNING

Named Best Public Relations Campaign by FACP



ENGAGEMENT

12,000 event attendees



CHAMBER WEBSITE

54,000 unique SeminoleBusiness.org visitors

INVEST IN THE CHAMBER TODAY!

Call 407.708.4600 to discuss your best investment level.



WHY I'M A MEMBER

"Our Chamber membership has provided us with great business opportunities and lifelong relationships."

Brad & Lauren Miller
J. Wayne Miller Company



WHY I'M A MEMBER

"Being a part of the Seminole Chamber gives us the ability to work closely with businesses to keep our schools A+"

Tina Calderone, Ed.D.
Former SCPS Board Member