

BOARD OF DIRECTORS

Luke Martin

SEK, CPAs & Advisors - Chair

Michael J. Connor

Walker, Connor & Spang, LLC -
Incoming Chair & Treasurer

Pat Abbott

Strickler Insurance Agency - Secretary

Jenna Kaczmarek

Patriot Federal Credit Union - DCI Chair

Robin Russell

Manpower - Foundation President

Eric Foreman

Patriot Federal Credit Union - CADC President

Carlos Perez

CPA Wireless Boost Mobile

Brad Evans

Bartlett Tree Expert Company

Bill Boltz

ULTA Beauty

Jake Naugle

Patriot Federal Credit Union

Van Gray

GearHouse Brewing Co.

Brian Wise

BW Properties LLC.

Carla Christian

Chambersburg Memorial YMCA

Adam Donius

Chick-fil-A

Theresa DiLoreto

Ghost Writer

David Grant

Keystone Health

Jocelyne Melton

Baxter Group, Inc.

Mark Story

Keller Williams Keystone Realty

Bill Kick

Herbert, Rowland & Grubic Inc.

Anthony Bagley

M&T Bank

Dr. Wesley Fugate

Wilson College

Warren Braxton

Aerotek, Inc.

NEW MEMBERS

The Greater Chambersburg Chamber of Commerce extends a warm welcome to its new members and would also like to congratulate the following members for their anniversaries. Together, we can help everyone prosper and enhance the quality of life in the region.

Real Estate

Carly Patla Team - Iron Valley Real Estate of Chambersburg

Carly Patla
653 Wayne Avenue
Chambersburg, PA 17201
(717) 491-2190
www.ivrechambersburg.com/agent-bio/cpatla
carlypatlarealtor@yahoo.com

Shopping & Specialty Retail

The Center of Balance, LLC

Leslie Kemper Punt
29 North Jefferson Street
Greencastle, PA 17225
(717) 643-1404
www.thecenterofbalancelc.com

Office Supplies, Equipment & Furniture

DICE Office Equipment

Kevin Swope
20 Commerce Avenue
Greencastle, PA 17225
(717) 597-0300
www.DiceOE.com
kevin@DiceOE.com

Insurance

The Gonzalez Agency - Farmers Insurance

Marcos Gonzalez
42 South Main Street
Chambersburg, PA 17201
(717) 446-0245
www.agents.farmers.com/pa/chambersburg/marcos-gonzalez
mgonzalez6@farmersagent.com

Insurance

Goosehead Insurance

Korey Paff
375 Floral Avenue, Suite 105
Chambersburg, PA 17201
(717) 477-5107
www.agents.gooseheadinsurance.com/pa/chambersburg
korey.paff@goosehead.com

Landscaping

TH & CS Inc. DBA U.S. Lawns of Frederick

Jason Burke
19714 Beaver Creek Road
Hagerstown, MD 21740
(301) 416-8180
www.uslawns.com/locations/md/frederick
Jason.Burke@uslawns.net

MARCH MEMBER MILESTONES

35 Years

- Modnur Pharmacy Inc.

30 Years

- Edward Jones - Financial Advisor: John Reinert

20 Years

- Peter G. Wallick, M.D.

15 Years

- Franklin County Historical Society - Kittochtinny

5 Years

- Antietam Realty
- CJ's BBQ Smokehouse

1 Year

- Adventure in Fun LLC

- Fulton Mortgage Company
- Meyers Bus Lines, Inc.
- The Pineapple Group
- Triple R Roofing & Siding

PRESIDENT'S MESSAGE



While we have all been digging out of the snow this winter, your Chamber has been digging into an exciting new year of events and activities for our community and membership. Spring is just around the corner, and we are kicking it off with fresh ideas, new events and even some new faces.

We welcomed Wesley Fugate, President of Wilson College, and Warren Braxton, Director of Operations at Aerotek Staffing Corp. to the board of directors recently. We are excited to have them both on our team and look forward to their insights on all the happenings at Wilson College, as well as deeper understandings of our workforce and human resources within the community.

We have replaced our traditional Awards Breakfast for 2021 with a major celebration of our health care workers. Health Care Heroes Appreciation Week launches March 23 with a virtual awards ceremony followed by many events through March 30 including giveaways, discounts, meals and more. This is just one of many projects your Chamber is doing to make 2021 one of our best years ever.

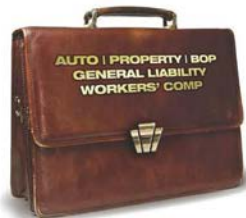
2021 also represents our first full year under the new membership investment program. The feedback from our business community has been overwhelmingly positive. This program offers maximum flexibility and customization of your annual Chamber engagement while significantly streamlining each member's yearly planning and marketing process. If you have not yet had an opportunity to meet with our membership director, Jordan Nace, please reach out to him soon.

This past year has strained the abilities of our community members to connect with one another in meaningful and supportive ways. As we move through 2021 the Chamber is planning some exciting new initiatives to help grow our network of business connections and significantly broaden the reach of our membership. We know we are stronger together and the Chamber is taking bold, forward-looking steps to strengthen our community for success in the future.

Stay tuned. The best is yet to come!

Stephen Christian
President & Executive Director
Greater Chambersburg Chamber of Commerce
Chambersburg Area Development Corp.

Affordable business insurance featuring enhanced coverages — plus the opportunity to earn a dividend.



Learn how, as a member of the Greater Chambersburg Chamber, you could earn an all-lines* dividend by placing your insurance with Penn National Insurance.

*except bonds and umbrella

Call this member agency today!



www.pennnationalinsurance.com



800-503-8908 • www.stricklerins.com

CHAMBER TEAM

Stephen Christian

President of Greater Chambersburg Chamber of Commerce
Executive Director of Chambersburg Area Development Corp.
schristian@chambersburg.org

Jordan Nace

Membership Director
jnace@chambersburg.org

Maryliz Toohig

Finance & Human Resources Director
mtoohig@chambersburg.org

Angela Schaeffer

Director of Operations & Assistant to the President
aschaeffer@chambersburg.org

Lark Kennedy

Communications & Marketing Manager
Civil War Seminars Coordinator
lkennedy@chambersburg.org

Laiton Heckman

Admin & Communications Assistant
11/30 Network Liaison
lheckman@chambersburg.org

Sue Black

Customer Service Representative & Heritage Center Coordinator
receptionist@chambersburg.org

Lisa Helm

Accounting Assistant
lhelm@chambersburg.org

Virginia Harriger

Executive Director of Greater Chambersburg Chamber Foundation
gharriger@chambersburg.org

Sam Thrush

President of Downtown Chambersburg Inc.
sthrush@chambersburg.org

Our Mission:

We exist to help our members prosper and to enhance the quality of life in the Chambersburg area.





Health Care HEROES APPRECIATION WEEK

SCHEDULE

For the most updated information,

The global pandemic has challenged our health care workers like never before. Presented by F&M Trust, we are seeking support from the Franklin County community from March 23 thru 30 in recognizing their relentless service.

MARCH 23-30

COFFEE GIVEAWAY

PARTICIPATING COFFEE SHOPS IN FRANKLIN COUNTY

Each morning during Appreciation Week, health care workers can kick-start their morning by claiming their free coffee or tea at designated coffee shops in Chambersburg, Greencastle or Waynesboro thanks to our sponsor, **Gabler Trucking Inc.** Health care workers must show their ID, badge or business card to claim their free coffee/tea. Hours vary based on coffee shop.

Sweet Rollers, 115 E. Queen St., Chambersburg - Offer valid 7 to 9 a.m. from Tuesday thru Saturday

The bean & biscuit, 18 E. Baltimore St., Greencastle - offer valid 7 to 9 a.m., Tuesday thru Saturday

For more details and additional locations, visit Chambersburg.org/Heroes.

MARCH 23-30

SHOW & SAVE HUB FOR HEALTH CARE

PARTICIPATING BUSINESSES

Local businesses have the opportunity to create special discounts for health care workers during Appreciation Week thanks to sponsor **Penn National Insurance**. Health care workers must show their ID, badge or business card to claim their discount. See the complete list of participating businesses at Chambersburg.org/Heroes.

- Black & Blush Boutique, 15% off your purchase
- **Bruster's Real Ice Cream & Nathan's Famous Hot Dogs**, 10% off your purchase
- Caretti's Pizza & Ristorante (Rt. 11), 10% off orders for dine in or carry out. Not applicable with delivery
- Cafe del Sol, 10% off your purchase
- **Chambersburg Heritage Center & Gift Shop**, 10% off your purchase
- **Kenny's Grill & Ice Cream**, 10% off your purchase
- **LA Cameras**, 25% off photo processing, photo gifts and wall decor
- **Meadow's Original Frozen Custard of Chambersburg**, Free Small cone or cup of frozen custard, frozen yogurt or italian ice
- **Mikie's Ice Cream**, \$1 off every \$5 spent
- **Plasterer's Florist and Greenhouses**, 10% off product, delivery not included. Mention discount when ordering
- **Snavely's Garden Corner, Inc.**, 10% off one regular priced item (no other discounts apply)
- **Subway**, 20% off your purchase (Wayne Ave & Norland Ave. locations)
- **Sweet Rollers**, 10% discount or free coffee with any purchase
- **Tommy's Express Car Wash**, \$5 off The Works wash, \$5 off your first month of Tommy Club unlimited washing starting at \$19.99. If already a Tommy Club member you'll receive a detailing kit (\$3 value)

MARCH 23-30

THANK YOU HEALTH CARE HEROES SIGN DISPLAY

SIGNAGE THROUGHOUT FRANKLIN COUNTY

Show your appreciation for our local health care heroes and purchase individual "Thank You Health Care Heroes" yard signs for you, your family and your friends. Cost is \$15 per sign and must be ordered by March 10. Help us decorate the county! Purchase signs at Chambersburg.org/Events or call 717-264-7101.

HEALTH CARE HEROES APPRECIATION WEEK SPONSORS

Presenting Sponsor



Tribute Video Sponsor



Media Sponsors



Straight from the Heart Raffle Sponsor



New Enterprise Stone & Lime Co., Inc.

Kick-start the Morning Coffee Sponsor



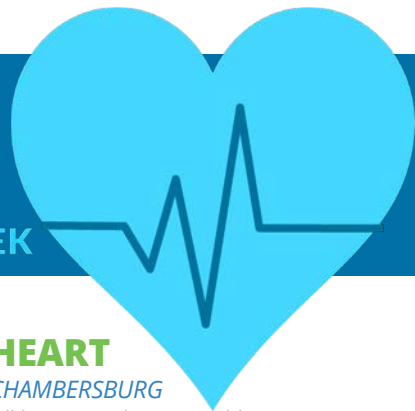
Blood Drive Sponsor



OF EVENTS

visit Chambersburg.org/Heroes.

Health Care HEROES APPRECIATION WEEK



TUESDAY, MARCH 23

VIRTUAL HEALTH CARE AWARDS CEREMONY

8 TO 9 A.M. - ZOOM

Join us in honoring our health care workers who have shown relentless dedication and service to our community during the global pandemic.

Program Highlights:

- Interactive Meet & Greet with all participants (videos on, please!)
- Honoring health care award recipients in seven categories including leadership, client impact and Health Care Worker of the Year
- Special Franklin County, Pa Covid-19 Update
- Premiere of Franklin County Health Care Tribute Video

Cost to attend is \$25/members, \$30/non-members. Each virtual registration receives "Thank You Health Care Heroes" yard sign. Special thanks to Awards Ceremony Sponsor **M&T Bank**.

TUESDAY, MARCH 23

HEALTH CARE TRIBUTE VIDEO

RELEASED AT VIRTUAL AWARDS CEREMONY AND SOCIAL PLATFORMS

It's our time to recognize the service of our health care workers across Franklin County. The video will feature our local workers and premiere at the Virtual Health Care Awards Ceremony. Following the ceremony, it will be widely distributed on social media and the Chamber's communication channels. *Special thanks to Video Sponsor Cross & Crown.*

MARCH 24, 25, 26

FOOD FROM THE HEART

WAYNESBORO, GREENCASTLE, CHAMBERSBURG

Three food distribution centers will be set up during Health Care Heroes Appreciation Week on March 24, 25 and 26. These will be outdoor locations and include food from Chick-fil-A, raffle items and more to show our appreciation. Health care workers must show their ID. *Find updated details and times at Chambersburg.org/Heroes.*

MARCH 24, 25, 26

STRAIGHT FROM THE HEART RAFFLE

WAYNESBORO, GREENCASTLE, CHAMBERSBURG

During the Food from the Heart events, health care workers may enter to win gift cards and prizes by entering their name in the Straight from the Heart Raffle! Prizes will be given away to show our community's appreciation to those in the health care field. Health care workers must show their ID to participate. Special thanks to sponsor **New Enterprise Stone & Lime Co., Inc.** *More information at Chambersburg.org/Heroes.*

TUESDAY, MARCH 30

BLOOD DRIVE

10 A.M. TO 4 P.M. AT 15 S. MAIN ST., CHAMBERSBURG

Donating blood is the most precious gift anyone can give to another person - the gift of life. Consider participating in the Red Cross Blood Drive on March 30 from 10 a.m. to 4 p.m. at 15 South Main Street in Chambersburg presented by **Menno Haven**. Participants must register in advance due to Covid-19 restrictions. *Register at Chambersburg.org/Events.*

THANK YOU FOR YOUR SUPPORT!

Virtual Health Care Awards Sponsor



Show & Save Hub Sponsor



Food from the Heart Sponsors



Virtual Health Care Heroes Awards Ceremony Table Sponsors: ACNB Bank; Herbert, Rowland & Grubic, Inc.; Rotz & Stonesifer, P.C.; SEK, CPAs & Advisors

Patron Sponsors: Chambersburg Neighbors with Best Version Media; Chambersburg Noontime Lions Club; Decorating Den Interiors; Dogwatch by Perry Fence; Grane Hospice Care; Penn National Insurance, R. Perry Fence Co. LLC; truNorth Financial Services*
*denotes two Patron Sponsors

SPRING



FOOD TRUCK FESTIVAL

Our Sponsors:

GRAND: Menno Haven

GOLD: PA National Guard Recruiting & Shafer Equipment Company

SILVER: Mann Plumbing & Heating and Corning Credit Union

BRONZE:

IN-KIND: VerStandig (Radio) & Directional Traffic (Signage)



APRIL 18TH - 11AM TO 3 PM - WWW.DOWNTOWNCBURG.COM/FOODTRUCKFEST

Chambersburg Duck Derby Sponsorship Opportunities



Super Duck Sponsor - \$2,000

*One available

- Company logo on all event promotional materials (includes website)
- Company logo on banner at start line
- Opportunity for a representative to drop ducks at the start
- Opportunity for a representative to assist in announcing winners
- Company logo on 2 yard signs at event
- Company logo on tickets
- 30 Duck Derby race tickets

Tentatively
SOLD!

Duck Tent Sponsor - \$1,500

*Two available

- Company logo on all event promotional materials (includes website)
- Company logo on Tent Banner at event
- Company provided banner at start line
- Opportunity for a representative to drop ducks at the start
- Company logo on 3 yard signs at event
- 25 Duck Derby race tickets

Golden Egg Sponsor - \$1,000

- Company name on event promotional materials (as space allows)
- Company provided banner at finish line
- Company logo on Golden Egg banner at event
- Company logo on 2 Golden Egg yard signs
- 20 Duck Derby race tickets

Quackers Sponsor - \$500

- Company name listed on event webpage and Facebook event page
- Company logo on 2 yard signs at event
- 10 Duck Derby race tickets

Feathered Friend - \$250

- Company name listed on event webpage and Facebook event page
- Company logo on signs at event
- 5 Duck Derby race tickets

Duckling Darling - \$100

- Company name listed on event webpage and Facebook event page
- Company name listed on sign at event

THANK YOU for your support of this important fundraiser for Downtown Chambersburg Inc.

Event is on May 29th, 2021

 _____ Yes, I want to sponsor at the \$_____ level.

 Company Name - as listed for sponsor recognition

 Contact Name

 Address

 City

 State

 Zip

 Email

 Phone

*Commitment and logo must be received no later than **early May 2021** to be included in printed materials.

Please mail payment to: Downtown Chambersburg Inc., Attn: Sam Thrush, 100 Lincoln Way E., Ste. A, Chambersburg, PA 17201. **Questions?** Contact Sam at 717-264-7101 ext. 204 or sthrush@chambersburg.org.

The Duck Derby is
coordinated by and benefits:



**DOWNTOWN
CHAMBERSBURG INC.**

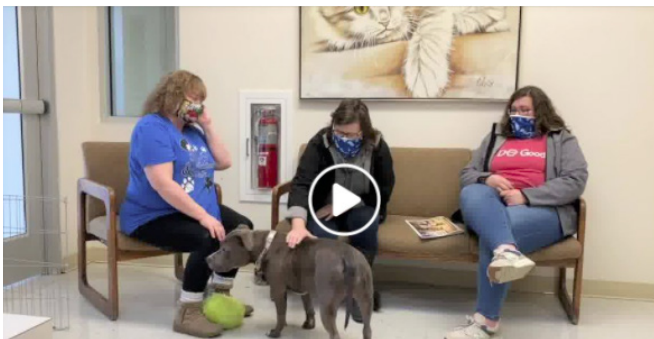
TRENDING NEWS



The Chamber Ambassadors recently delivered a 25-year membership plaque to **Salzmänn Hughes, P.C.** at 79 St. Paul Drive in Chambersburg. Salzmänn Hughes is a regional law firm with clients ranging from large corporations to individuals with basic legal needs. For more information, visit SalzmännHughes.com. Thank you to Robin Russell of **Manpower**, Pat Abbott of **Strickler Agency, Inc.**, Matt Baer of **First Due Lawncare and Landscapes LLC** and Jackie Fisher of **Art Sign Company of Chambersburg** for delivering the plaque on behalf of the Chamber.



More than 50 people attended the virtual "Shadows of History: Overlooked and Forgotten Civil War Battles" via Zoom in early February hosted by **Chambersburg Civil War Seminars & Tours**. Well-known historians from across the U.S. presented talks on Perryville, Second Winchester, Shepherdstown, Atlanta and others. To view more upcoming lectures, visit CivilWarSeminars.org.



We recently launched our first Pet Spotlight with **Cumberland Valley Animal Shelter!** Our Chamber Ambassadors, Jessica Brindle and Lynn St. Clair with **Occupational Services, Inc.**, interviewed Nova in early February. Nova is a sweet companion who loves treats and is looking for her forever home. Find more info about adopting at Cvas-Pets.org, call 717-263-5791 or check the Chamber's Facebook page for the Pet Spotlight of the Month. To learn more about the Chamber Ambassador program, contact Jordan Nace at jnace@chambersburg.org.



Congratulations to **Snavely's Garden Corner**, who reached their 50-year anniversary of Chamber membership! Snavely's Garden Corner is a diversified garden center offering a terrific selection of plant material including dwarf and unusual evergreens, shade and flowering shrubs and trees, broadleaf evergreens and fruit bearing plants. Learn more about them at Snavelys.net. Special thanks to the following Ambassadors: Matt Baer, **First Due Lawncare and Landscapes LLC**; Tom Blachek, **The Benefits Group**; Pat Abbott, **Strickler Agency, Inc.**; Jackie Fisher, **Art Sign Company of Chambersburg** and Neil Suders, **Noland of Chambersburg**.

MEMBER SPOTLIGHTS

HOCKENBERRY MANAGEMENT CONSULTING

Shippensburg, PA | 717-532-6563 | HockenberryConsultants.com

The team at **Hockenberry Management Consulting (HMC)** partners with clients to grow their business by improving organizational and individual performance. This requires a focused commitment to effective planning and execution in areas like business strategy, management systems, operational processes, marketing and sales, leadership and company culture, internal and external communications and customer experience.

HMC works together with clients in key areas of their business to create custom solutions that bridge the gap between where they are and where they want to be.

Jeff Hockenberry is in his twentieth year as a consultant and coach, helping businesses, nonprofits and individuals achieve success. Heather Hockenberry joined the company a few years ago and leads initiatives in the critical areas of marketing, communications and customer experience.

Clients say that this father-daughter duo listens carefully, analyzes thoroughly, creates solutions wisely and helps to get the job done. Jeff and Heather would simply say they are doing what they love to do and can't imagine doing anything else.

Understanding that each situation is unique, Jeff and Heather are always happy to discuss specific challenges and opportunities with business and nonprofit leaders. So, give



them a call. Whether they help you directly or point you in the right direction, you're sure to have a new friend when the conversation is over.

DICE OFFICE EQUIPMENT

20 Commerce Ave., Greencastle, PA | 717-597-0990 | DiceOE.com

Dice Office Equipment aims to make finding, repairing and operating office equipment as easy as it should be. We provide quality products at fair prices and we service a variety of equipment even if it was bought from another provider. Offering XEROX, RICOH, SAVIN, HP, OKI and more, we tailor our solutions to meet your needs.

Located right here in Franklin County, we work hard to get you the service you need in as little time as possible. We know that you want your organization to succeed and you need the right tools to get the job done. With our quality copier/printer selection and certified local support, we stand ready to help you succeed.

We offer copiers, printers, multi-function machines, fax machines, typewriters, scanners, paper folders, paper shredders, toner, supplies, maintenance kits, parts, waste



toner bottles, wide format paper rolls and more from a variety of popular brands including XEROX, RICOH, HP, SAVIN and OKI.

Our service team based in Greencastle, PA also stands ready to help you stay up and running. Whether you prefer to work with us on a one-time or on-going basis, we are here to serve you.

In April, **Over the Rainbow Children's Advocacy Center** will plant pinwheels for Child Abuse Prevention Month. Each pinwheel is for a courageous child who received services at the Center. They stand for the carefree childhood we want for all children, and are a call to neighbors, community members and leaders to play a role in protecting and nurturing our youngest citizens. You can help by purchasing your own Pinwheel Garden (10 pinwheels and a yard sign) for your home or business by March 19 for just \$10; call 717-504-8491 or email Stacy at sguyer@overtherainbowcac.org for more information.

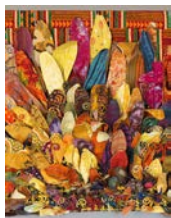
Wilson College is hosting an exhibition of artwork by students of Hagerstown Community College's Department of Visual Arts. The exhibition, presented by Wilson's Division of Art & Letters, will continue through March 10 in the Bogigian Gallery, located on the second floor of Lortz Hall. HCC and Wilson are partnering to provide opportunities to students seeking growth in their disciplines and an exhibition venue outside Hagerstown. The Bogigian Gallery is open from 9 a.m. to 5 p.m. Monday through Friday. Admission is free. For additional information or an appointment, contact Professor of Fine Arts Philip Lindsey at 717-264-2783 or philip.lindsey@wilson.edu.



F&M Trust recently officially opened its new capital region headquarters in Harrisburg. The new building is a symbol of F&M Trust's long-term focus on the future and commitment to the Capital Region. Located at 4050 Crums Mill Road in Lower Paxton

Township, the office will support business development efforts and growth in the Capital Region. Serving as a cross-functional hub, the building will house regional leadership as well as employees from the bank's commercial, investment and trust services divisions and operational support areas. Roughly 12 F&M Trust employees will occupy the 6,687 square-foot office.

Do you want to improve your ability to sell effectively? To grow your business, you need to sell, and the most effective way to sell is with a proven process. **Hockenberry Management Consulting** will be hosting a results-oriented course focused on the Consultative Sales Process. By combining an understanding of sales from the buyer's perspective, proven techniques for effective selling and a process for personal achievement, you will uncover a system that will lead to more sales. Bottom line, if you want to grow your business, this course is for you (and your team). Call us at 717-532-6563.



The Foundry Art Market at 100 South Main Street in downtown Chambersburg will host an exhibition of artwork by Wilson College studio art students. The exhibition will continue through March 14. The event is free and open to the public. The partnership provides opportunities for exhibition exchanges and possible studio/workshop opportunities. Foundry artists will have the opportunity to exhibit their artwork at Wilson College in the fall of 2021.

Wilson College has named Angela Zimmann, Ph.D., CFRE

of Gettysburg, Pa., as the new vice president for institutional advancement. With more than 20 years of experience in fundraising, leadership and teaching in higher education, Zimmann will join the college March 15. She replaces Camilla Rawleigh, who retired from the institution in November 2020. Reporting to the president of the college, the vice president for institutional advancement is responsible for enhancing Wilson's resources and relationships to respond to changing student and institutional needs and to create a vision for a sustainable future. Visit Wilson.edu for more information.

Volunteers are wanted at **Franklin County Historical Society!** They have something for everyone: docents, librarians, data entry, transcribers and more. Visit FranklinHistorical.org for more information.

Businesses rise and fall on their leadership, and in these times, leading is more challenging than ever. To grow your business, you need leaders at every level of the organization to manage effectively, so **Hockenberry Management Consulting** will be hosting a course focused on Effective Management. By combining an understanding of proven management techniques and good leadership, with a process for personal and organizational achievement, you will improve as a manager. If you want to manage more effectively, this course is for you. Call us at 717-532-6563.

The **Capitol Theatre Center**, in partnership with the **Chambersburg Community Theatre**, announced the 2021 Franklin County Young Playwrights Festival Virtual Performance, coming in late spring! Stay tuned for more information at CapitolTheatre.org.

The **Penn State Mont Alto LaunchBox** is accepting applications for their 2021 Lion Tank competition through March 5. Entrepreneurs - pitch your business idea for a chance to win start-up funds! Visit MontAlto.PSU.edu/LaunchBox/Apply for details.

SEK, CPAs & Advisors is accepting applications for "ExploreSEK," a summer leadership program designed for exceptional college students who are considering a career in public accounting. ExploreSEK provides students the chance to learn more about both the accounting profession and SEK specifically. The program is held in June of each year for two full days in our Chambersburg office, located at 804 Wayne Avenue. The application process ends in April. Visit SEK.com/Careers for more information.

Herbruck's Poultry Ranch has released its 2020 Sustainability Report, which outlines its values as a family-owned business and how Herbruck's sustainably serves hundreds of thousands of people across the U.S. with ethically sourced, highly nutritious eggs. Herbruck's has a longstanding history of demonstrating its commitment to sustainability through four key values: People, Planet, Product and Prosperity. These values are a roadmap that guide all business decisions, and this will continue at Herbruck's sustainable cage-free egg-laying facility in Mercersburg. Herbruck's began site preparations on the facility, called Blue Springs Egg Farm, in January. The project represents more than

IMPORTANT. ENGAGING.

HAVE NEWS TO SHARE?
EMAIL LAITON AT
LHECKMAN@CHAMBERSBURG.ORG

\$100 million in economic investment in Franklin County and will employ nearly 200 people when it is fully operational. Find out more about Herbruck's at Herbrucks.com.

Pregnancy Ministries Inc. is looking for women in their first and second trimesters to volunteer as models for training scans for our nurse. Time slots are available between 9 a.m. and 2:30 p.m. on the third Thursday of each month. This allows our nurse to continue to maintain her scanning skills and in turn you will receive a picture of your baby. Call 717-267-3738 for more information.



Patriot Federal Credit Union has been approved to expand our field of membership allowing us to serve more residents of our area. In addition to Franklin County, Pa. and Washington County, MD, Patriot membership is

now open to businesses, organizations and individuals who live, work, worship, attend school or regularly conduct business in Frederick County, MD and the Eastern Panhandle of West Virginia – Berkeley, Jefferson, and Morgan Counties.

The **Franklin County Government's** 2021 Nursing Scholarship is accepting applications through March 25! The scholarship is open to all high school seniors living and attending high school for at least one consecutive year in Franklin County, and who have been accepted into an accredited four-year nursing program. Visit FranklinCountyPA.gov for an application.

2021 TECHNOLOGY INNOVATION CHALLENGE GRANT

The Greater Chambersburg Chamber Foundation is accepting applications for the 2021 Technology Innovation Challenge Grant program through Monday, April 5. Technology grant dollars are available for teachers in Franklin County public schools to encourage the innovative use of technology in grades K-12.

The Chamber Foundation offers the program using contributions by businesses through Educational Improvement Tax Credits (EITC) by the Pennsylvania Department of Community and Economic Development (DCED). As an approved Educational Improvement Organization (EIO), the Chamber Foundation partners with area businesses to provide these grant dollars. In 2021 the Foundation grant program is supported through generous EITC funds from **Orrstown Bank, Truist (formerly BB&T)** and **Waste Management**.

Applicants will be evaluated based on three key criteria: innovation, value added to curriculum and advanced academics. The application packet can be found on the Chamber Foundation website at Chambersburg.org/Foundation. The Chamber Foundation has awarded more than \$400,000 in Innovative Technology Grants to local teachers since 1999. For more information, contact Ginny Harriger at gharriger@chambersburg.org or 717-264-7101 ext. 205.

More Smiles for Mom.

The reasons for mom's smile: A staff that treats her like family. Delicious meals and attention to nutritional needs. Engaging ways to stay strong. The support she needs.



PRESBYTERIAN
SENIOR LIVING
Green Ridge Village

A Continuing Care Retirement Community | Newville, PA



Start the conversation today!
717.966.6904

www.psl.org/moreinnewville

P E R S O N A L C A R E





Sip & Stroll

DOWNTOWN CHAMBERSBURG

Presented by:



THE STACY MELLOTT GROUP

RE/MAX 1ST ADVANTAGE

*7 to 8 indoor locations
At least 7 to 8 beverage
vendors*

*Visit our website
And Facebook*

REGISTER HERE



SATURDAY, MARCH 27TH

1PM - 5PM

\$30

\$10 DD

WWW.DOWNTOWNCBURG.COM/SIP-AND-STROLL

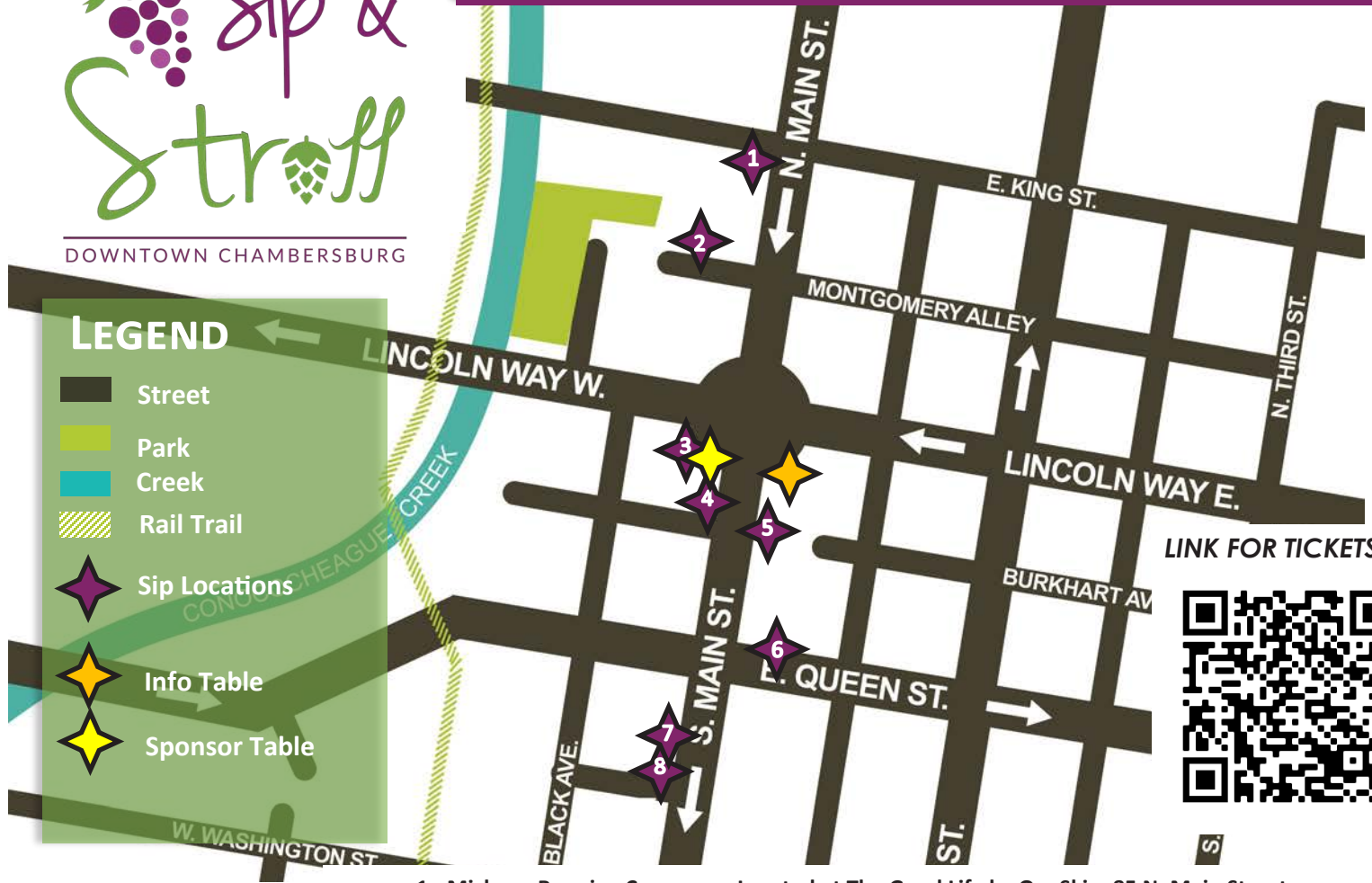
DOWNTOWN CHAMBERSBURG MARCH 27TH - 1PM TO 5PM



DOWNTOWN CHAMBERSBURG

LEGEND

- Street
- Park
- Creek
- Rail Trail
- Sip Locations
- Info Table
- Sponsor Table



LINK FOR TICKETS:



S

**WEAR YOUR MASK WHEN YOU
ARE WITHIN 6' OF OTHERS!**

**CONSUME POUR INSIDE THE
INDOOR LOCATION.**

**DRINK
RESPONSIBLY!**

PRESENTED BY:



- 1 - Michaux Brewing Company - Located at The Good Life by OneSkin, 85 N. Main Street
 - 2 - Roy Pitz Brewing Company - Located at Nerdvana Outpost, 47 D. North Main Street
 - 3 - GearHouse Brewing Company - Located at the Franklin Co. Visitors Center, 19 S. Main Street
*****Location is also the event's comfort station*****
 - 4 - Rough Edges Brewing Company - Located at Beam Graphix, 29 S. Main Street
 - 5 - Juniata Brewing Company - Located at Gonzalez Agency, 42 S. Main Street
 - 6 - Fourscore Beer Co. - Located at Sweet Rollers, 115 E. Queen Street
 - 7 - Thirsty Farmer Brew Works - Located at Merle Norman, 127 S. Main Street
 - 8 - 633 Brewing - Located at YP Jewelers - 133 S. Main Street
- TWO TICKET WAVES DUE TO COVID. 1PM to 4PM & 2PM to 5PM.

THANK YOU TO OUR IN-KIND SPONSORS- BEAM GRAPHIX (MASKS), SWEET ROLLERS (PRETZEL BITES) & VERONI CAFÉ (CHIPS & SALSA)
THANK YOU FOR COMING OUT TO OUR SIP & STROLL



GREATER CHAMBERSBURG VIRGINIA HARRIGER CHAMBER FOUNDATION EXEC. DIRECTOR

717-264-7101 ext. 205 | gharriger@chambersburg.org | Chambersburg.org/ChamberFoundation | FranklinCountyWorks.com



SCOOP-A-PALOOZA 2021

Scoop-A-Palooza, presented by **ACNB Bank**, has traditionally been held at **Chambersburg Area Senior High School** on the second Saturday in July with more than 1,700 people attending in 2019.

Due to the Covid-19 pandemic, Scoop 2020 was adjusted to an ice cream trail providing safe, family fun. The modified event supported local businesses with 21 regional ice cream vendor stops. Special thanks to the businesses and community members that supported us in 2020.

We are not sure what form Scoop 2021 will take as the pandemic continues to linger. But one thing is for certain: we will have Scoop-a-Palooza! For more information on 2021 sponsorships, contact Ginny Harriger at gharriger@chambersburg.org. All proceeds benefit educational programs throughout Franklin County funded by the Greater Chambersburg Chamber Foundation.

Scoop Grand Sponsor:



LFC YOUTH ENCOURAGE THE HEART

The Leadership Franklin County (LFC) Youth session "Encourage the Heart" was the perfect topic for our youth to learn about in February. Leadership Franklin County (LFC) youth identified strategies to encourage and support others, talked about creating unique ways to encourage and support individual differences, abilities and strengths. Following this lesson, the students examined the impact of recognition on others' esteem and performance. The virtual session ended with complicated ethical and moral group decision exercises that challenged students to think broadly about how their decisions impact others. Students have two more monthly sessions before graduation.

LFC Youth Sponsor:



LFC COMMUNITY - EDUCATION & HISTORY IN FRANKLIN COUNTY

The February morning Leadership Franklin County (LFC) Community session discussed the challenges facing the education sector of Franklin County. This included public-school funding streams, how education impacts workforce development and the issues facing education providers. Faculty for the session included:

- Danae Amstutz – Guidance Counselor, **Shalom Christian Academy**
- Joshua Dortenzo – Teacher, **Chambersburg Area Senior High School**
- Jim Duffey – Administrative Director, **Franklin County Career & Technology Center**
- Jennifer Everetts - School Counselor, **Greencastle-Antrim High School**
- Dr. Lura Hanks - Superintendent, **Greencastle-Antrim School District**
- Dr. Tod Kline – Superintendent, **Waynesboro Area School District**
- Terry Miller – Assistant Administrative Director, **Franklin County Career & Technology Center**
- Nikolas Mucci – Teacher, **Chambersburg Area Senior High School**
- Jody Onomastico - Counselor, **Hamilton Heights Elementary, Chambersburg Area School District**
- Becca Petersheim – Teacher, **Chambersburg Area Senior High School**

The afternoon session was moderated by Janet Pollard from **Franklin County Visitors Bureau** who led discussions about Franklin County history. Pollard helped the class make the connection between Franklin County history, Franklin County's strengths and the impact our past has on our leaders and economy today. The class researched local historical figures from the Frontier era to 20th century time periods and gave mini presentations.

LFC Community Sponsor:



DOWNTOWN CHAMBERSBURG INC. SAM THRUSH PRESIDENT

717-264-7101 ext. 204 | sthrush@chambersburg.org | DowntownCburg.com



8TH ANNUAL DUCK DERBY

Get your tickets for the 2021 Duck Derby! More than 2,000 little duckies will race down the Falling Spring Creek, over the falls and head to the finish line near the bridge in Chambers Fort Park on Saturday, May 29. The 8th Annual Duck Derby will raise funds for partner organizations as well as revitalizing downtown. Winning ducks will receive up to \$500, and the last duck will receive \$25.

Ducks are \$5 each or \$25 for a Quack Pack of six. Please purchase your ducks in advance. Spectators are welcome to cheer their ducks to the finish line on May 29 at 10:30 a.m. Order your tickets online at [Chambersburg.org/Events](https://chambersburg.org/Events) or contact Sam Thrush at 717-264-7101 ext. 204.

Special thanks to Quackers Sponsor **LCSi Lehman Construction Services** for their patronage as well as our ticket partners Cumberland Valley Breast Care Alliance and **Cumberland Valley School of Music** for supporting this event.

SIP & STROLL RETURNS

We invite you to join us for our first Sip & Stroll of the year on Saturday, March 27 from 1 to 5 p.m. Up to eight breweries from our region, including **GearHouse Brewing Company**, will be at indoor locations along Main Street in downtown Chambersburg. This fundraising event will feature downtown and local vendors offering some of the best beer, wine, liquor and cider in our area. Cost for general admission is \$30 and Designated Driver is \$10. Tickets are available here: DowntownChambersburgPa.com/Sip-and-Stroll. Proceeds help support the revitalization of downtown Chambersburg; thank you for your patronage!



DOWNTOWN MERCHANDISE TO SUPPORT HEALTH CARE

Downtown Chambersburg Inc. has partnered with **Beam Graphix** to sell "I ❤️ Downtown Cburg" items including tote bags, hoodies and insulated mugs. When you purchase any of the items, portions of the proceeds will be used to buy gift cards from downtown businesses. These gift cards will be given to health care workers in March during Health Care Heroes Appreciation Week. Order your merchandise at <https://ilovecburg.itemorder.com/sale> or call 717-660-2727.



Shatzer's Fruit Market

Enjoy seasonal fruits, jams, gifts & more!

OPEN DAILY

2197 Lincoln Way West, Chambersburg
717-263-2195

QuickBooks® Step-by-Step Training Manual Provided



Dates: April 21, 2021
May 19, 2021

Location: 720 Norland Avenue
Chambersburg, PA 17201

Time: 9:00AM – 12:00PM



Scan QR code with mobile device for more info.

4 Easy Ways to Register Now!

Call: 800-555-9510 or 717-267-2100

Fax Completed Registration: 717-267-1464

On-Line: www.schultheisscpa.com – click on the resources link

Mail Below Registration: Schultheiss & Associates
720 Norland Avenue
Chambersburg, PA 17201

Should you prefer, one-on-one training is also available. For more information call and ask for Amber.

Is Your Office Making These 21 Critical Mistakes?

- 3 QuickBooks® errors that hurt cash flow in your office.
- 7 Mistakes to avoid in “costing” and why they hurt you.
- 5 Ways to reduce payroll headaches - the one best fix.
- 3 Reports that will stop wasted expenses and overhead.
- 3 Critical errors in setting up your chart of accounts.

Who Should Attend QuickBooks® Training?

- **Spouses** who help with the books on a part-time basis.
- **Business owners** who want to avoid mistakes and improve cash flow.
- **Partners** looking for long-term answers to accounting problems.
- **Bookkeepers** who need a better understanding of QuickBooks®.
- **First-time** users just new to QuickBooks® software.
- **Seasoned users** who want to take advantage of the advanced features of QuickBooks®.

Course: \$129 per person. \$100 per person if two or more attendees from same company.
(includes continental breakfast)

Name: _____

Company Name: _____

Address: _____

City: _____ State: _____ Zip: _____

Phone: _____

E-Mail: _____

Additional Registrants: 1. _____

2. _____



Payments Accepted: Check ♦ Cash ♦ Mastercard ♦ Visa



Visit our Facebook page – www.facebook.com/schultheisscpa.com



Greater Chambersburg Chamber of Commerce
 100 Lincoln Way East, Suite A
 Chambersburg, PA 17201
 717-264-7101
 Chambersburg.org

PRSRTD STD
 U.S. POSTAGE
PAID
 Permit #7
 Chambersburg, PA

MARCH EVENTS DETAILS / REGISTER

CHAMBERSBURG.ORG/EVENTS

- 1-10** **BUY YOUR YARD SIGN TO SUPPORT HEALTH CARE HEROES**
 PROUDLY DISPLAY "THANK YOU HEALTH CARE HEROES" SIGNAGE, \$15/EACH, CALL 717-264-7101
- 15** **HISTORYTALKS: MARCUS RENO IN THE VALLEY OF THE LITTLE BIG HORN: AN OPPOSING VIEW BY FREDERIC C. WAGNER III**
 7 P.M. VIA ZOOM, \$5/PERSON, REGISTER CIVILWARSEMINARS.ORG
- 18** **11/30 NETWORK BELATED BIRTHDAY PARTY**
 5:30 P.M. AT ROY PITZ BEER STUBE, 140 N. 3RD ST., CHAMBERSBURG
- 23** **VIRTUAL HEALTH CARE AWARDS CEREMONY**
 8 - 9 A.M. VIA ZOOM, REGISTER \$25/MEMBERS, SPONSORED BY M&T BANK
- 23-30** **HEALTH CARE HEROES APPRECIATION WEEK PRESENTED BY F&M TRUST**
 DAILY ACTIVITIES IN FRANKLIN COUNTY. VISIT CHAMBERSBURG.ORG/HEROES
- 30** **BLOOD DRIVE PRESENTED BY MENNO HAVEN**
 10 A.M. - 4 P.M. AT 15 S. MAIN ST., MUST REGISTER IN ADVANCE DUE TO COVID-19 RESTRICTIONS

Valley Agency COMPANY **INSURANCE**

(717)264-4311

"Corner of Norland & Fifth Avenues"



- Friendly Professional Service
- Competitive Pricing from Multiple Companies
- Stability of serving the community for over 100 years!



Working together to help our members prosper and to enhance the quality of life in the Chambersburg area.



5-star accredited by the U.S. Chamber of Commerce



The Outlook is a publication of the Greater Chambersburg Chamber of Commerce (GCCC). Ideas, opinions and statements expressed in articles by contributors are not necessarily those of the GCCC. Neither the publisher nor any individual associated with any branch of production, nor the advertisers, will be held liable for typographical misprints contained herein. Content submitted by members of the GCCC may contain advertisements and/or links to third party sites. The GCCC does not endorse nor advocate for the advertised product, event, service or company, nor any of the claims made by the content and takes no responsibility for promises made or the quality/reliability of the products/services offered.