

MAY/JUNE 20

THE OUTLOOK



**BRINGING
BUSINESS
BACK**

**UPCOMING
VIRTUAL
EVENTS**

Helping our members prosper and supporting our community.



GREATER CHAMBERSBURG
CHAMBER OF COMMERCE

717-264-7101 | Chambersburg.org

BOARD OF DIRECTORS

Luke Martin

SEK, CPAs & Advisors - Chair

Kim Crider

Optavia - Immediate Past Chair

Michael J. Connor

Walker, Connor & Spang, LLC - Treasurer

Pat Abbott

Strickler Insurance Agency - Secretary

Angela Quigley

SEK, CPAs & Advisors - DCI Chair

Robin Russell

Manpower - Foundation President

Eric Foreman

Patriot Federal Credit Union - CADC Vice President

Carlos Perez

CPA Wireless Boost Mobile

Jeff Truhan

The Shook Home

Brad Evans

Bartlett Tree Expert Company

Angela Lynch

Chambersburg Area School District Foundation

Bill Boltz

ULTA Beauty

Jake Naugle

Patriot Federal Credit Union

Camilla Rawleigh

Wilson College

Van Gray

GearHouse Brewing Co.

Brian Wise

BWise Manufacturing, LLC

Carla Christian

Chambersburg Memorial YMCA

Adam Donius

Chick-fil-A

Theresa DiLoreto

SpiriTrust Lutheran

David Grant

Keystone Health

Jocelyne Melton

Baxter Group, Inc.

NEW MEMBERS

The Greater Chambersburg Chamber of Commerce extends a warm welcome to its new members and would also like to congratulate the following members for their anniversaries. Together, we can help everyone prosper and enhance the quality of life in the region.

Health Care Services

Franklin Hospice, LLC

Karen Giffin

209 Grant Street

Chambersburg, PA 17201

(717) 504-3465

www.FranklinHospice.org

sjsteiner@franklinhospice.org

Auto Transport

Meyers Bus Lines, Inc.

Darwin Meyers

2455 Edenville Road

Chambersburg, PA 17201

(717) 264-0684

darwin@meyersbuslines.com

MAY/JUNE

MEMBER MILESTONES

65 Years

The Butcher Shoppe

60 Years

In & Out Beverage

Jennings Value Center

Rife Motor Company Inc.

Strickler Agency, Inc.

30 Years

Chambersburg Rental Service, Inc.

Cumberland Valley School of Music

David Black Associates, Inc.

Sheetz - Norland Avenue

Sheetz - Monticello Court

Sheetz - Lincoln Way East

25 Years

Down to Earth Lawn Care

20 Years

Alpha Media

Capitol Theatre Center

Women In Need, Inc.

15 Years

Industrial Maintenance & Repair Services, LLC

10 Years

Commuter Services of PA/AECOM

5 Years

Courtyard by Marriott Shippensburg

1 Year

Chambersburg Noland

Franklin County Free Press

Grocery Outlet

ITP Matters

MyEyeDr. - Gateway Avenue

MyEyeDr. - Wayne Avenue

Wolter Advanced Dental Care

CHAIR'S MESSAGE

We've seen many changes to the world these past several months, and the greater Chambersburg area has not been exempt. As our members face unprecedented challenges, the Chamber has been adapting, providing guidance and connecting with our members in new and exciting ways. We would like to say a big thank you to our first responders and frontline workers for their hard work and sacrifice; it is truly appreciated.

Our Chamber team has made various adjustments to accommodate the new business climate. We now have virtual mixers and informal business interviews called "Coping with Covid" posted to Facebook. Other resources include connecting our members with the Power Hour webinar series and delivering essential information with the online resource center at Chambersburg.org/Covid19.

We are looking forward to the next several weeks as we are permitted to enter the restart phase of our economy both here and around the country. Keep an eye out for new resources from the Chamber as we help bring business back. Together, we'll be ready to face the challenges and opportunities of 2020.

In summary, while we have faced many challenges, and many are still to come, please connect with the Chamber and fellow members to find the resources and guidance we all need to return to the successful and healthy community that we have been and continue to be.



Luke Martin, CPA
Member of the Firm, SEK, CPAs & Advisors
Board Chair, Greater Chambersburg Chamber of Commerce

**Affordable business insurance
featuring enhanced coverages — plus
the opportunity to earn a dividend.**



Learn how, as a member of the Greater Chambersburg Chamber, you could earn an all-lines* dividend by placing your insurance with Penn National Insurance.

*except bonds and umbrella

Call this member agency today!



www.pennnationalinsurance.com



800-503-8908 • www.stricklerins.com

CHAMBER TEAM

Stephen Christian

President of Greater Chambersburg Chamber of Commerce
Executive Director of Chambersburg Area Development Corp.
schristian@chambersburg.org

Jordan Nace

Membership Director
jnace@chambersburg.org

Maryliz Toohig

Finance & Human Resources Director
mtoohig@chambersburg.org

Angela Schaeffer

Director of Operations & Assistant to the President
aschaeffer@chambersburg.org

Lark Kennedy

Communications & Marketing Manager
Civil War Seminars Coordinator
lkennedy@chambersburg.org

Stacy Guyer

Accounting Assistant
sguyer@chambersburg.org

Sue Black

Customer Service Representative & Heritage Center Coordinator
receptionist@chambersburg.org

Laiton Suders

Administrative Assistant
11/30 Network Liaison
lsuders@chambersburg.org

Virginia Harriger

Executive Director of Greater Chambersburg Chamber Foundation
gharriger@chambersburg.org

Sam Thrush

President of Downtown Chambersburg Inc.
sthrush@chambersburg.org

Our Mission:

We exist to help our members prosper and to enhance the quality of life in the Chambersburg area.



BRINGING BUSINESS BACK



Chamber Ambassadors (L-R): Robin Russell: Manpower; Jaime Fagan: Allstate Insurance Co.; Brittany Snyder: SERVPRO of Chambersburg; Amanda Haupt: SpringHill Suites by Marriott Chambersburg; Jordan Nace: Chambersburg Chamber; Thomas Blachek: The Benefits Group; Rachel Bowers: F&M Trust; Toni Diffenderfer: 1st Ed Credit Union; Neil Suders: Chambersburg Noland; Deb Kase: Corpus Christi Roman Catholic School; Lisa Hogue: F&M Trust; Pat Abbott: Strickler Agency, Inc.; Lynn St. Clair: Occupational Services, Inc. Not pictured: Jackie Fisher: Art Sign Company of Chambersburg, LLC; Belinda Holbert: Starr Insurance; Jessica Brindle: Occupational Services, Inc.

As the largest business advocacy organization in Franklin County, we advocate for a return to economic activity in accordance with public health and safety and in conjunction with the PA Chamber's "Bringing PA Back" plan. Any business that can have employees work remotely is still encouraged to do so.

The Chambersburg Chamber is launching a "Bringing Business Back" Resource Hub to provide businesses with the tools they need to safely operate in the days ahead. These best practices have been compiled from discussions with business owners and local health officials. Please note that any implemented practices should be in sync with the CDC and local and state Department of Health guidelines.

By visiting Chambersburg.org/BringingBusinessBack, you will find a plethora of resources to aid your business in a safe re-opening following the COVID-19 pandemic. Topics include "Safe Practices" with recommended sanitization practices for offices and restaurants. You'll also find a

"Responsible Re-opening" page that highlights strategies and tactics for businesses to utilize as they re-open and connect with their consumers. Other pages include a "Training Hub" for businesses to stay updated on new techniques and technology as well as a "Loyal to Local" page that identifies ways the community can support our large and small businesses that are operated locally.

Please remember the purpose of this website toolkit is to advocate for the safe re-opening of businesses with the proper health precautions so we demonstrate that it is safe to shop, safe to work and safe to do business in Franklin County.

The guidelines on the website are not exhaustive, nor do they encompass all industries, but represent a robust starting point for how general businesses can operate again safely, while protecting employees and customers. If you have questions or have content suggestions, please email Lark Kennedy at lkennedy@chambersburg.org.

Recognizing our Ambassadors

The Chambersburg Chamber is fortunate to have a robust group of business and community leaders that serve as our Chamber Ambassadors. The purpose of the program is to connect with our Chamber members and help them strengthen their businesses. They accomplish this by volunteering for committees, greeting members at events, attending ribbon cuttings, congratulating members for anniversaries and helping with member retention.

Our Ambassadors are vital to fulfilling the Chamber's mission, and we are grateful for their service! By assisting

our membership director with answering the needs of our members, we are able to increase the value of their Chamber membership and positively impact the local business climate.

We would like to thank our dedicated Ambassadors for the work they do on a daily basis for the Chamber. Please introduce yourself to them at our upcoming virtual mixer on May 5. If you are interested in becoming an Ambassador, reach out to Jordan Nace, membership director, at jnace@chambersburg.org.

25th Annual Golf Tournament



We're excited to host our Annual Golf Tournament in its 25th year! We are closely monitoring the social distancing and health guidelines set forth by the CDC in regards to this event. Currently, the tournament is planned for June 5 at the **Chambersburg Country Club** at 3646 Scotland Road in Chambersburg. Please be aware some event modifications may be made to adhere to the standards set forth by the CDC.

Registration will start bright and early at 7 a.m. with a shotgun start at 8 a.m. Breakfast will be served by **Chick-**

fil-A with snacks and beverages offered by **Grocery Outlet** and **Penn National Insurance**. The cost to participate is \$95 per golfer and includes greens fees, range balls, breakfast, lunch, drinks, networking and prizes. Foursomes are encouraged to sign up as soon as possible by emailing Jordan at jnace@chambersburg.org.

Special thanks to Grand Sponsor **Spherion** for their support! Several sponsorships are available, including Contest (\$1,250)*, Premier (\$1,000)*, Benefactor (\$500), Tent (\$500), Beverage (\$750)*, Raffle Prize and Hole (\$100) sponsors. To sponsor or donate a door prize, contact Jordan Nace at 717-264-7101 ext. 202 or jnace@chambersburg.org. Space is limited, please reserve early! To register, visit Chambersburg.org/Events.

**limited opportunities*

Please note a contingency date of October 1 has been set in the event we need to move the tournament due to social distancing restrictions.



2021 Travel Club Trips Announced



Are you dreaming about your future travel plans when the global pandemic is a distant memory? Now is the time to plan your 2021 vacations with the Chamber Travel Club! We have two exceptional tours scheduled for spring next year including a South African Safari and America's Canyonlands.

Held February 25 to March 10, our Travel Club members will be escorted by Carol DiBiase with **Dream Vacations** and Collette to South Africa. Travelers will visit South Africa's cosmopolitan cities, posh resorts, expansive desert, magnificent wildlife and fertile wine country combined with a harmonious mix of many cultures. And of course, you will search out the "Big Five" during an open-air safari game drive! Other highlights include a working ostrich farm, Featherbed

Nature Reserve, wine tastings, Cape Town and more. The trip is 14 days with 24 meals and is \$4,899 per person double occupancy (includes airfare).

Have you ever marveled at the vast landscape of the Grand Canyon? Or witnessed the breath-taking beauty of Zion National Park? Experience the greatest views in the United States on a trip to America's Canyonlands from September 16 to 23 in 2021 coordinated by Renee Brink with **Uniquet Chambersburg Travel**. You'll embark on the great American adventure, exploring the grand national parks of the West! Tours will include Grand Canyon National Park, Bryce Canyon, Monument Valley, Lake Powell and Zion National Park. Enjoy vista views from the historic Desert Tower, a scenic tour of Monument Valley, the Zion Park Tram Tour, a panoramic Las Vegas City Tour and so much more! The trip is eight days with 12 meals and costs \$3,795 per person double occupancy (airfare included). An information session on America's Canyonlands will be held at the Chamber on Monday, Sept. 14 at 6 p.m.

For more details about the Travel Club trips or to register for a free info session, visit Chambersburg.org/TravelClub.

Virtual Mixer: Mingle Mayhem

Party with the Chamber virtually during our Cinco de Mayo Mingle Mayhem! Hosted via Zoom, this mixer will happen on May 5 from 3 to 4 p.m. We will be joined by Monica from **Veroni Cafe** to learn how to make a great festive Cinco De Mayo dish as well as Billy Zahos from **Copper Kettle** who will be making the perfect margarita!

Participants will have a chance to mingle and play bingo for door prizes - don't forget to BYOB! Bingo cards will be sent separately along with the conference login details. Please register in advance at Chambersburg.org/Events to receive the Zoom credentials. For questions, please contact Jordan Nace at jnace@chambersburg.org.

Economic Development Breakfast Date Set



Our inaugural Economic Development Breakfast, sponsored by **ACNB Bank**, will be on July 16 from 7 to 9 a.m. at the **Franklin County Visitors Bureau** (moved from late May). The event was created to focus exclusively on the construction and renovations of our region as well as focus on the importance of downtown as a destination for Chambersburg. Our keynote

speaker, Dylan Bauer of Royal Square Development Corp., will review national revitalization trends and explore the potential for economic growth.

The breakfast will feature a presentation of property improvement awards as well as the Environmental Sustainability and Downtowner awards. Following the main speaker, attendees will listen to a small-scale developer panel.

Seats are selling quickly with a maximum capacity of 100 people. Tickets include breakfast and cost \$25 for members or \$30 for non-members. Table sponsorships are available for \$300 and patron sponsorships for \$75. Register online at Chambersburg.org/Events or contact Sam Thrush at sthrush@chambersburg.org.

Grand Sponsor



Apply Now for Leadership Community Class



Start your path to become one of Leadership Franklin County's (LFC) esteemed Alumni by applying for the most unique leadership program in Franklin County. Thirty-minute information sessions will be held via Zoom on Tuesday, May 19 at 12:30 p.m. and Thursday, May 21 at 4 p.m. To register, visit Chambersburg.org/Events.

Founded in 1985, LFC Community teaches emerging leaders about the community and grows their network of connections. The program improves the quality and

depth of leadership in Franklin County by bringing together a cross-discipline of students and developing their effectiveness.

By participating in the program, students develop an awareness of the county's problems, opportunities and resources available; it also stimulates a commitment from them to make Franklin County a better place in which to live and work. This is a tuition-based program which selects students through an application and interview process, scholarship opportunities are available. For more details, contact Ginny Harriger at gharriger@chambersburg.org. Apply online by June 30 at Chambersburg.org/Leadership-Franklin-County

LFC Community is a program sponsored by **F&M Trust** and hosted under the Greater Chambersburg Chamber Foundation, a 501(c)(3) corporation exclusively for charitable, educational and cultural purposes. The Foundation provides a mechanism to establish, administer and finance programs to meet the community's crucial and changing needs in line with the goals of the Chamber of Commerce. Learn more at Chambersburg.org/ChamberFoundation.

Franklin County Education Summit

The Chambersburg Chamber and Chamber Foundation will host an Education Summit breakfast featuring area educators as the main speakers. Attendees will participate in a dialogue with our panel of speakers on important issues affecting the education and workforce development in south central Pennsylvania.

This new event will be held on August 13 from 7 to 9 a.m. at **Wilson College**. Cost is \$25 for members

and \$30 for non-members. We are now accepting sponsorships at all levels including the Grand sponsorship for \$1,000, Premier for \$750, Table for \$300 or Patron for \$75. Please reference the insert in this newsletter for sponsor details. If you would like to secure your sponsorship, contact Ginny at gharriger@chambersburg.org. Registration will open soon for the breakfast at Chambersburg.org/Events.

TRENDING NEWS



The Chambersburg Takeout Blitz Facebook group, started in late March, has reached more than 4,200 members! This group was created to support our local restaurants that have had to adjust their operations due to COVID-19. Residents and restaurants are welcome to join the group and post their specials, business hours and photos of delicious food! Pictured is takeout posted to the group from **CJ's BBQ Smokehouse** at 975 Lincoln Way West in Chambersburg.



We have been pleased to launch our newest video series - Coping With Covid. These interviews are conducted by our membership director, Jordan Nace, and are informal chats about how businesses are dealing with the stay-at-home orders in Franklin County.

If you'd like to be a guest on the show, please email jnace@chambersburg.org.

Special thanks to the following guests for participating on the show recently:



- Abel Castro, **State Farm**
- Angela Lynch, **Chambersburg Area School District Foundation**
- Jackie Fisher, **Art Sign Company**
- Pat Abbott, **Strickler Agency, Inc.**
- Maryann Fisher, **Decorating Den Interiors**
- Alice Elia, **Chambersburg Borough**
- Mike Kalathas, **The Orchards**
- Brad Evans, **Bartlett Tree Experts**
- John Kilduff, **Patriot Federal Credit Union**

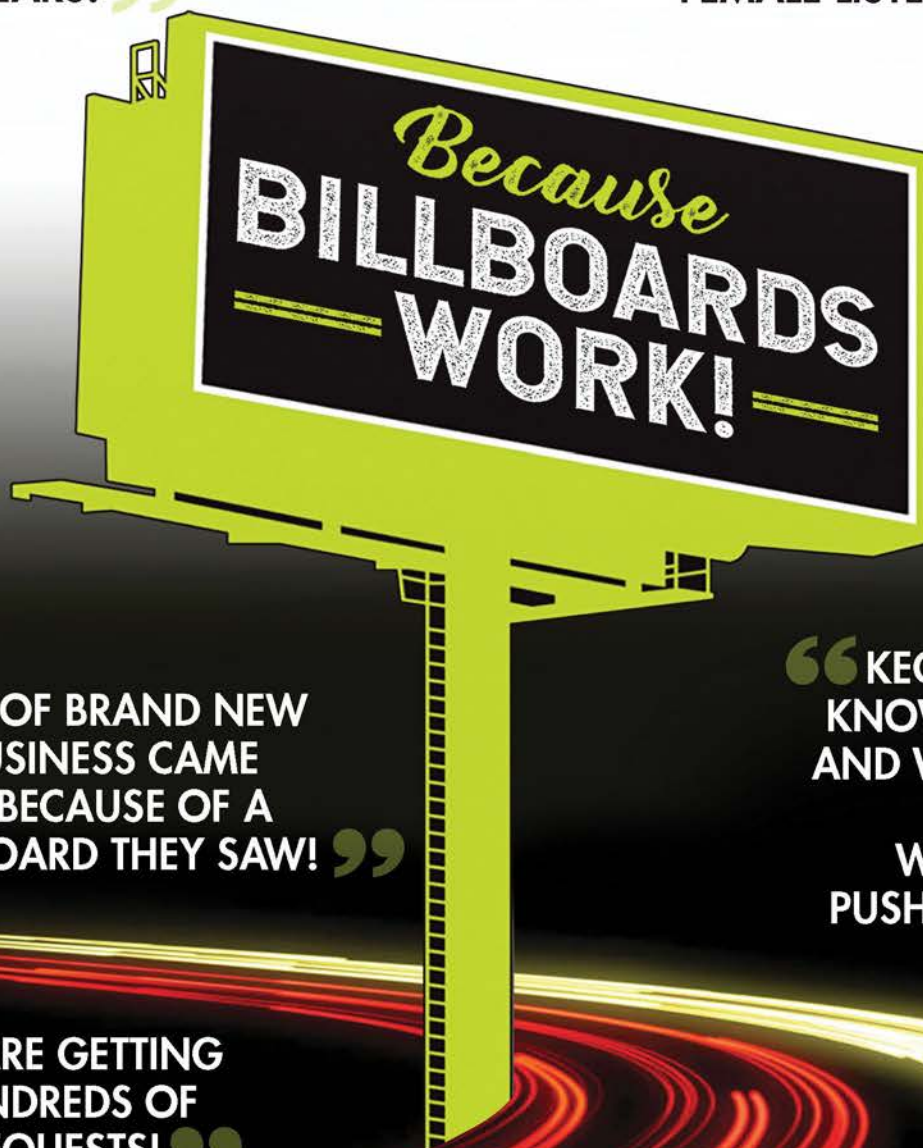


We've created a fun, educational session called "Power Hour" hosted on Zoom for our members. These programs are free for our Chamber members to join and are \$50 for the presenter to host one. So far, we've enjoyed topics about marketing strategies from **Ad Taxi Digital Co.**, navigating a crisis with **REEL PD**, transportation with **Commuter Services of PA** and mental health from Kim Crider - **Optavia**. To host the next Power Hour, please contact Jordan at jnace@chambersburg.org.

WHY 200+ CHAMBER MEMBERS HAVE ADVERTISED WITH **KEGERREIS** OUTDOOR ADVERTISING

“ WE HAD THE
BEST RESPONSE
IN YEARS! ”

“ WE ARE NOW #1... AS
WELL AS DOMINATING
FEMALE LISTENERSHIP! ”



“ BILLBOARD
ADVERTISING
TOOK US FROM
63% TO 99%
OF OUR GOAL! ”

“ 50% OF BRAND NEW
BUSINESS CAME
IN BECAUSE OF A
BILLBOARD THEY SAW! ”

“ KEGERREIS GETS TO
KNOW YOUR BUSINESS
AND WHO YOUR TARGET
AUDIENCE IS
WITHOUT BEING
PUSHY OR OVERPRICED ”

“ WE ARE GETTING
HUNDREDS OF
REQUESTS! ”

BILLBOARDS WORK. BIG TIME.

Kegerreis.com

717.263.6700

KEGERREIS

outdoor advertising, llc

2020 FRANKLIN COUNTY EDUCATION SUMMIT

Date: August 13, 2020

Location: Wilson College

Projected Attendance: 150-175

About the event: The Greater Chambersburg Chamber of Commerce and Chamber Foundation will host an Education Summit breakfast featuring area educator speakers. Attendees will participate in a dialogue with our education panel on important issues affecting the education and workforce development in south central Pennsylvania.

Contact: Ginny Harriger, Chamber Foundation Executive Director, 717-264-7101 ext. 205, gharriger@chambersburg.org

Grand Sponsor - \$1,000 – one available - Sponsor will receive the following benefits:

- Preferred seating for a table of 8
- Opportunity for a representative to speak at the breakfast about your business for a few minutes
- Logo featured on the event webpage and on all event promotional materials
- Logo featured in the program
- A full-page ad on the back of the program
- Opportunity to set up a promotional table near the entrance of the event in the registration area
- Mention during the welcome as the Grand Sponsor
- Company name mentioned in all media releases about the event
- Logo featured in Greater Chambersburg Chamber of Commerce print newsletter recap article

Premier Sponsors - \$750 – two available - Sponsor will receive the following benefits:

- Preferred seating for a table of 8
- Opportunity to place marketing materials at each guest table
- Logo featured on event webpage, event promotional materials as space allows (company name listed when logo is not included), and on a PowerPoint slide at the event
- A half page ad in the event program and company name featured in the program
- Mention during the welcome as a Premier Sponsor
- Logo featured in Greater Chambersburg Chamber of Commerce print newsletter recap article

Table Sponsor - \$300 - Sponsor will receive the following benefits:

- Preferred seating for a table of 8
- Company name featured on the event webpage, listed on event promotional materials, featured in program and logo featured on PowerPoint slide at event.
- Mention during the welcome as a table sponsor
- Company name listed in Greater Chambersburg Chamber of Commerce newsletter recap article

Patron Sponsor - \$75 - Sponsor will receive the following benefits:

- Preferred seating for 2
- Company name listed on the event webpage, in the program, on a PowerPoint slide
- Company name listed in Greater Chambersburg Chamber of Commerce newsletter recap article

[Yes, I would like to sponsor the 2020 Franklin County Education Summit](#)

Company Name (as you want it to appear in listings) _____

Contact Name _____ Phone _____

Email _____ Sponsorship Amount _____

I understand that the submission of this form confirms commitment from the company above for this sponsorship.

Signature _____

Return form to Ginny Harriger, Chamber Foundation Executive Director: Mail to Greater Chambersburg Chamber of Commerce, Attn: Ginny Harriger, 100 Lincoln Way East, Suite A, Chambersburg, PA 17201; or email to gharriger@chambersburg.org; or fax to 717-267-0399.

COVID-19 RESO

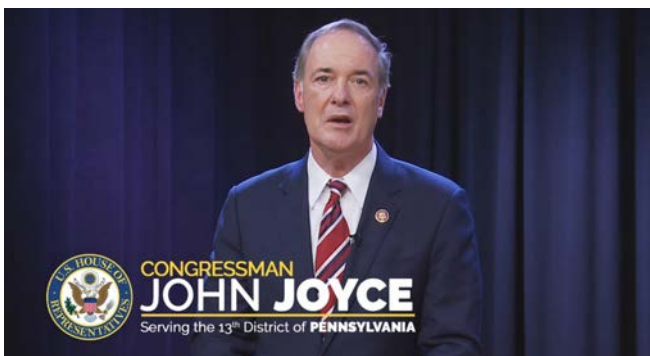
For the most updated information,

COVID-19 TAKE ACTION



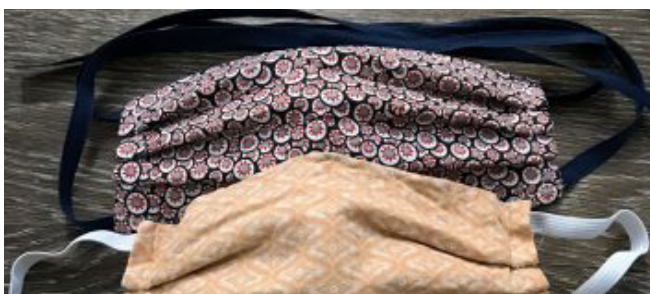
BUY LOCAL

We love our community! Please look for ways to support our small and large businesses that are operating locally - many have had to temporarily close their doors to the public due to Covid-19. Ways to support them include purchasing gift cards, ordering online or leaving a positive review on social media platforms. For more ideas, visit Chambersburg.org.



TELE-TOWN HALL

Please join us for a discussion with **Congressman John Joyce** regarding issues of concern for our local businesses during the shutdown-through-reopening process. The event is May 6 from 8 to 9 a.m. Please send your questions in advance to chamber@chambersburg.org, keeping in mind that Congressman Joyce is a federal representative and can not address all questions related to State regulations and procedures for PA.



SUPPORT HEALTH CARE

WellSpan Health and **Keystone Health** are seeking face masks, sewn from home, to be donated to their employees. Those interested in sewing may visit Chambersburg.org/Covid19 to view sewing patterns and donation instructions for both organizations.



PREPARING TO RE-OPEN

The Chambersburg Chamber has put together a general overview to serve as a guide for businesses to reopen. The steps include building a COVID-19 plan, respecting social distancing, creating a cleaning schedule, marketing your Covid-19 plan and respecting the overall process. To view these steps in full, visit Chambersburg.org/BringingBusinessBack.

COVID-19 Guidance for Small Businesses

Article written by WellSpan Health - Formerly Summit Health

As part of our continued support for you, your employees and your organization during COVID-19, we are sharing scenarios that contain WellSpan Health's recommended assessment and treatment protocols.

Scenario 1

If you or your employee is exhibiting coronavirus symptoms (a fever with a cough or shortness of breath):

- Take an online screening or call for a phone assessment.
- o Use the Coronavirus Online Assessment Tool available at WellSpan.org/Coronavirus.
- o Call your primary care provider. If you don't have a primary care provider, you can call WellSpan's Coronavirus Information Hotline toll-free at (855) 851-3641.
- Following your screening, you may be directed to one of WellSpan's open air testing locations in our communities. A referral is needed by a health care provider in order to get tested at one of WellSpan's open air testing locations.
- Do not visit doctors' offices, urgent care locations or hospital

emergency departments, unless you are experiencing a serious health issue. If you are experiencing a healthcare emergency – such as heart attack, stroke or major traumatic injury – please call 911.

Scenario 2

If you or your employee are sick and do not have a fever, we encourage the use of online (telehealth) urgent care visit through your health plan provider or go to WellSpanOnlineUrgentCare.org. At this time, we want to limit visits to doctors' offices, urgent care locations or hospital emergency departments to accommodate and treat serious health conditions.

Scenario 3

If you or your employee have recently been sick, have seen and been treated by a provider, and are now looking for a return to work note, please contact your treating provider to obtain a note. Be assured, as your trusted partner, we will meet this challenge head-on. And we will do it together as one community, united. Learn more at: WellSpan.org/Coronavirus/Resources-for-Employers.

Mixed Messages from Baxter Group, Inc.

Article written by Jocelyne Melton of Baxter Group, Inc.

News, emails, texts, family, friends, . . . messages about the Coronavirus coming from sources across the board. Some are accurate, some are far from accurate. As business owners we are fighting through the multiple changes to the SBA disaster loan program website, the Governors' orders, constant changes in our project plans. Who is there to help our employees through the fear, chaos, and uncertainty of these times?

After the first phone call from an employee sharing their multitude of concerns, I knew we needed to take immediate action to keep our team together. Like a parent to their children, our employees are looking to us for calmness, for sanity, for direction. Under normal circumstances, they spend as much time, if not more, at work than anywhere else. The BEST thing Baxter Group, Inc. could do right NOW for our employees is to be there for them with a clear line of COMMUNICATION.

Our Management Team started meeting several times a week online via "Google Meet" sharing our concerns, the status of our projects, and the status of the health and well-being of our families. Members of the management team started making calls to our workforce, sharing concerns, expectations, and plans for the future victory of Baxter Group, Inc. over the virus and the potential downturn of the economy. Has it made a difference? We will never know.

What we do know is that we have to be here for each other.

Our plan is to speak to our employees regularly with a message that is accurate, transparent, consistent, and from the heart. The CEO and the Management Team will be accessible to our workforce at all times. We are in this together. Every employee is going through similar yet unique challenges and need our empathy. Some of them will not be getting empathy from anywhere else, so it is our responsibility.

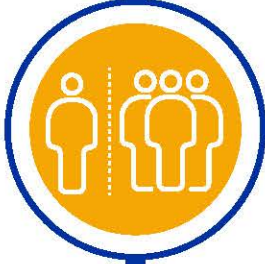
This is a time when our employees will be re-evaluating their work lives and private lives. When we come out on the other side of this coronavirus, our businesses will look different. They will need a clear and concise picture of our goals and direction. If we expect to come out a much better company with a much better future for our teams, they need to be able to visualize that.

Baxter Group, Inc. is committed to the families that have been committed to us over the years. The crucial ingredient to a business's success are its people. The crucial ingredient to remaining connected is COMMUNICATION.*

**Disclaimer: Please remember the Greater Chambersburg Chamber of Commerce and Baxter Group are not health or government officials. Our goal is to share helpful information in a timely manner; please seek additional information from other reputable sources.*

Fight COVID-19

Do your part to ensure the safety of our friends, neighbors, your loved ones and yourself as we respond together to COVID-19.



HELP SLOW THE SPREAD.

Limiting contact with others now ensures we have resources when we need them. Slowing the spread saves hospital beds, staffing and medical supplies for the most critical patients. Wear a hand-made fabric mask or facial covering when you cannot maintain social distancing. Keep 6 feet of space between yourself and others and avoid gatherings to limit exposure. Remember, you may be infected with the virus even if you feel well.



PRACTICE THE 3 C'S.

Good personal hygiene is one of the best ways to stay healthy. It's as simple as following the 3 C's.

COVER nose and mouth with a hand-made fabric mask or facial covering anytime you are in public to protect yourself and others. Cover your cough using your elbow or a tissue. Remember to throw tissues away immediately. **CLEAN** your hands frequently, washing for 20 seconds with soap and warm water. Regularly disinfect frequently touched surfaces and items.

CONTAIN the virus by staying home if you feel sick. Testing facilities **REQUIRE** a doctor's order. Use the WellSpan **online** assessment tool or **call** your doctor to determine whether you need to be tested.



KNOW WHEN TO SEEK CARE.

If you have mild symptoms or believe you've been exposed, stay home. If you feel worse or have a fever with cough or shortness of breath, **call** your primary care provider or take the WellSpan **online** assessment tool at **WellSpan.org/coronavirus**. If you don't have a primary care provider, you can call WellSpan's Coronavirus Information Hotline at **(855) 851-3641** free of charge.

[WellSpan.org/coronavirus](https://www.wellspan.org/coronavirus)





**ECONOMIC
DEVELOPMENT
BREAKFAST**

THURSDAY, JULY 16 FROM 7-9 A.M.

FRANKLIN COUNTY VISITORS BUREAU, 15 SOUTH MAIN ST.

PROGRAM HIGHLIGHTS:

PRESENTATION OF AWARDS INCLUDING

PROPERTY IMPROVEMENT, A KEYNOTE ADDRESS AND A SMALL-SCALE

DEVELOPERS PANEL DISCUSSION.

RSVP:

\$25 FOR MEMBERS, \$30 FOR NON-MEMBERS
REGISTER AT CHAMBERSBURG.ORG/EVENTS OR 717-264-7101

HOSTED BY:



SPONSORSHIPS AVAILABLE; SEE REVERSE FOR DETAILS

MEMBER SPOTLIGHTS

CHAMBERSBURG AREA SCHOOL DISTRICT FOUNDATION

435 Stanley Ave., Chambersburg, PA 17201 | 717-709-4091
angela.lynych@casdonline.org | CasdOnline.org

Established in 1991, the Chambersburg Area School District (CASD) Foundation is a non-profit organization dedicated to advancing educational opportunities by securing and providing independent support that enhances student academic and career development. Since our inception, the Foundation has provided the students and teachers of the district with nearly \$3 million in classroom grants and scholarships for higher education and training.

The CASD Foundation was named the third largest education foundation in the Commonwealth of Pennsylvania in 2018. Total assets exceed \$3 million. Fundraising efforts include annual and planned giving as well as special events. Our largest event, the 26th annual golf outing, has been rescheduled for Monday, September 14th at the Chambersburg Country Club.

"COVID-19 has changed daily life for all of us— and it certainly has impacted education. Our foundation has continued to operate and has provided a three-book packet and support materials by



mail to every child in our district. We are very blessed to have such a generous community supporting public education, which enables us to work to meet our mission. We have an extremely active board of directors as well as a strong donor base. We are also grateful for the work of all of our volunteers. We are always looking for the hand-raisers in our community who wish to join our cause," stated Angela Lynch, MA, CFRE, executive director of the Foundation. To learn more, contact Angela at 717-709-4091 or angela.lynych@casdonline.org.

UNIQUEST CHAMBERSBURG TRAVEL

450 Stouffer Ave., Chambersburg, PA 17201 | 717-263-5330
unigloberenee@yahoo.com | UniquetChambersburgTravel.com

Founded circa 1952 (as Vic Miller Travel) UniQuest Chambersburg Travel (UCT) remains a dedicated full-service travel consultant business serving clients across the USA.

UCT consultants, with a combined 100+ years of industry experience, deliver a broad spectrum of travel services from high-end luxury tours to airport transportation. A commission-based business, the majority of UCT's services provided to clients are free of charge. Owner/consultant Renee Brink's actual travel experience empowers her ability to render reliable information in a manner which enhances her clients' trust and satisfaction. Consultant Laura Bender joined the firm in Nov. '98 and continues to be a point of first contact and an asset to UCT.

Through 9/11, SARS, H1N1 and the 2008 financial crisis, UCT has adjusted to each challenge and looks forward to providing travel services to current and future travelers.



MEMBER SPOTLIGHTS

DECORATING DEN INTERIORS - MARYANN FISHER

mafisher@decoratingden.com | 717-263-4808
MaFisher.DecoratingDen.com

As an award-winning interior decorator, I have been helping my clients beautify their homes and businesses with top quality products for over thirty years. The products, including custom window treatments, furniture, lighting, wall coverings, flooring, bedding, accessories and custom closets, are purchased directly from more than 100 manufacturers in our supplier network.

Our regional and corporate offices provide me, and the other owners throughout the U.S. and Canada, continuous design and product knowledge training. My "shop at home" service has saved our clients countless hours of searching for that perfect item. Projects usually start with a phone interview as I explain the process and a one-hour complimentary consultation is scheduled in the client's home or office. During this appointment, I'll take measurements, photos, and discuss the investment expected. A presentation follows at a later date.

All products are shipped to me and we schedule delivery and installation for the BIG REVEAL! I only charge decorator fees when clients do not need products, but are asking for my professional



opinion, such as paint consulting, room and/or accessory arranging and home staging for resale. As a professionally trained decorator, I specialize in all aspects of interior design and the 'art' of pulling it all together, regardless of the size of the project. When I'm not busy helping clients beautify their surroundings, I wholeheartedly believe in giving back to our community. In 2013 I was awarded The International Athena award from the Chamber for my community involvement.

THE INSTITUTE AT RENFREW

1010 E. Main St. Waynesboro, PA 17268 | 717-762-0373
info@instituteatrenfrew.org | InstituteAtRenfrew.org

The Institute at Renfrew is celebrating 30 years of serving the community with programming that educates and entertains. Three decades ago, to address a growing enthusiasm for elementary school programming, the board of Renfrew Museum and Park created a separate nonprofit organization; Renfrew Institute for Cultural and Environmental Studies began operations in 1990. Last year, to shine a light on the organization's independent operations—linked in a unique partnership through which it is headquartered at Renfrew Park—the organization changed its name and became The Institute at Renfrew.

The Institute records nearly 9,000 student visits annually. School children from pre-school through grade six experience authentic learning through a series of hands-on environmental and Pennsylvania German farm life programs. This year, offerings will expand with new programs for middle schoolers and Pre-K students. Summer Institute brings kids into the park for weekly storytelling, a nature discovery program and other fun happenings.

In addition to programs for children, ongoing community learning offers cultural, scientific and environmental lectures,



bird walks, field trips and workshops. Thousands attend free community events such as Earth Celebration Day, Youth Festival, Shakespeare in the Park and Jazz Fest. These are supported by four annual fundraisers, student fees, partnerships and memberships.

JUNE 5, 2020



GREATER CHAMBERSBURG
CHAMBER OF COMMERCE



SPONSORSHIPS
SEE REVERSE

CONTINGENCY DATE: 10/1/20
RSVP: CHAMBERSBURG.ORG/EVENTS

spherion®

PRESENTS

25TH ANNUAL CHAMBER

GOLF TOURNAMENT

CHAMBERSBURG COUNTRY CLUB

FRIDAY, JUNE 5

\$95 PER GOLFER // 4 PERSON SCRAMBLE

7:45AM REGISTRATION & BREAKFAST // 8:30AM SHOTGUN START



1921

spherion® PRESENTS

SPONSORSHIPS

CHAMBER GOLF TOURNAMENT

\$500

TENT SPONSOR

- Prime course location
- Meet & greet golfers
- Logo featured on event promo materials

\$500

BENEFACTOR SPONSOR

- One team entry
- Featured on event webpage & program
- 1 Tee-box/Green signs

\$1,250

CONTEST SPONSOR*

- One team entry
- Signage at all contest sites
- Logo featured on event webpage
- Logo featured in tournament promos
- Opportunity to address attendees at lunch
- 3 Tee-box/Green signs

\$1,000

PREMIER SPONSOR

- One team entry
- Logo featured on event webpage
- Logo featured in Tournament promos & program
- 3 Tee-box/Green signs

BEVERAGE SPONSOR:



SNACK SPONSOR:



BREAKFAST SPONSOR:



OTHER SPONSORSHIPS

- RAFFLE PRIZE
- HOLE IN ONE

CONTESTS

- LONGEST DRIVE
- CLOSEST TO THE PIN
- HOLE-IN-ONE

SPONSORSHIPS

*LIMITED, CALL 717-264-7101 x202

CONTEST SPONSOR* - \$1,250
TENT SPONSOR - \$500

PREMIER SPONSOR - \$1,000
BENEFACTOR SPONSOR - \$500

HOLE SPONSOR - \$100 OR 3 FOR \$250

REGISTRATION FORM

Business Name: _____

Credit Card _____

Address: _____

Exp: _____ CCV _____ Signature: _____

Phone: _____ Email: _____

place me in a foursome register my foursome (list below)

Sponsorship Level: _____

Name & Business: _____

Contact: _____

Name & Business: _____

Payment Amount: _____

Name & Business _____

Name & Business _____

Return to Chambersburg Chamber at 100 Lincoln Way E., Chambersburg, Pa 17201 or jnace@chambersburg.org

Herbert, Rowland & Grubic, Inc. (HRG) is pleased to announce Matt Moore is rejoining the firm as a senior professional. He will lead the firm's electrical and control design services to clients throughout the Mid-Atlantic region. Moore will primarily support water and wastewater utilities; but he will also provide depth and experience in supporting HRG's civil, municipal and transportation services. He has 19 years of experience in the industry, including seven years as an electrical engineer at HRG in the early 2000s.



Wilson College will add a National Collegiate Equestrian Association (NCEA) Equestrian team in fall 2020, increasing the quality of competition opportunities for the College's equestrian students. NCEA

uses a collegiate format that allows competition between schools in all three NCAA divisions: I, II and III. In NCEA competitions, riders compete against one another on the same, randomly drawn horse. Wilson is developing its 2020-21 NCEA schedule, which will be announced at a future date.



As essential healthcare providers, **Pivot Physical Therapy** announced recently that in addition to remaining open during the COVID-19 pandemic, the company has begun providing services via telehealth as well as In-Home Physical Therapy. Clinicians are trained to assist patients through

every step of these alternative ways of providing care. Pivot assures patients will continue to receive the highest quality care during these challenging times. For more information about physical therapy services, call 844-748-6878 or visit PivotPhysicalTherapy.com.

Released by **The Foundation for Enhancing Communities** in partnership with the United Way of the Capital Region, the COVID-19 Community Response Fund will provide emergency funds for basic needs to long-standing nonprofit organizations in Franklin and other counties. 100% of donations will go toward supporting our trusted non-profit community partners on the frontlines. You can make a tax deductible gift by texting to 56512 with "TFEC", the amount you'd like to donate, and your name. An example would be "TFEC 50 Jennifer Doyle" texted to: 56512. You will receive a text response with a link to donate on TFEC's website, directly into the Fund.

ACNB Bank has implemented numerous initiatives to support customers in its communities served since the outbreak of the Coronavirus Disease 2019 (COVID-19) pandemic, such as: all community banking offices are limited to drive-up services for in-person banking transactions; additional staff have been allocated to assist customers over the telephone and to handle new

customer enrollments in online banking, mobile banking, and bill pay; for eligible business customers, the Bank is participating in any available government loan programs; and more. Additional details about ACNB Bank's COVID-19 assistance programs, including relevant disclosures and information on how to apply, are available at ACNB.com.

First Start Partnerships for Children and Families

celebrated Week of the Young Child™ by launching First Start @ Home. First Start @ Home supports families as their child's first and forever teacher during this Stay @ Home social distancing time. First Start @ Home uses the ReadyRosie technology-based curriculum, with daily videos and activities for children and their families. Teachers also connect with each child and family to develop the skills each child needs for kindergarten. All families, regardless of current enrollment, can check out the many resources on our website at FirstStartPartnerships.org.

F&M Trust is pleased to announce the following recent hires and promotions.



Don Chlebowski has been hired as F&M Trust's business development officer; Chlebowski is responsible for identifying and developing new banking relationships.



Betsy Yumlu has been hired as treasury relationship manager; Yumlu is responsible for contributing to the efforts to grow treasury management services, commercial loans and noninterest income, among other duties.



F&M Trust has hired Ben Musser as assistant technology services manager; he is responsible for managing all aspects of the bank's Technology Services Department. All three are based in F&M Trust's corporate headquarters.

In response to the COVID-19 pandemic, **United Way of Franklin County** activated the Community Crisis Response & Recovery Fund. This fund will help families and people across our community who, because of the pandemic, need access to critical resources and services like food, rent assistance and more. Donations can be made online at UWFCPa.org. In addition to the crisis fund, United Way of Franklin County is helping local organizations share their volunteer needs with the community. Those who are healthy and willing to volunteer their time to help distribute food, prepare supplies and more, should visit UWFCPa.org/Volunteer.

The Foundry Artist Co-op is developing an online store to

make the members' beautiful artwork available for purchase during the pandemic's closure of physical retail locations! Stay tuned for its release on FoundryArtsCoop.com.

The **Salvation Army of Chambersburg's** Soup Kitchen is assembling food boxes for those in need. Their food pantries are empty and they need the community's help to fill the boxes. You can donate from your home by purchasing items from their Amazon and Walmart wish lists - the items will be shipped directly to them. View this and other ways to get involved at Chambersburg.org/SupportCommunity.

Chambersburg Community Theatre has begun streaming "Virtual Radio Plays" live on Facebook, featuring titles such as "Little Women," "My Favorite Husband" and more. Visit Facebook.com/ChbgComTheatre to tune in or watch replays of the performances.

The **11/30 Network** and **United Way of Franklin County** collaborated to produce a video thanking Franklin County's "Healthcare Heroes" for serving on the frontlines of the COVID-19 pandemic. View the video at Facebook.com/UWFCPA.

Keystone Health and **WellSpan Health** are seeking face masks, sewn from home, to be donated to their employees. To view the sewing pattern and instructions for both organizations, go to Chambersburg.org/SupportCommunity.

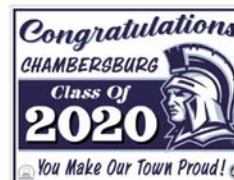
Patriot Federal Credit Union recently supported the COVID-19 Relief funds of the Franklin County United Way, PA and the Washington County United Way, MD, donating a total of \$6,500 to help support local communities impacted by the coronavirus. The funds to the United Way of Franklin County went toward the Community Crisis Response & Recovery Fund, which helps aid families and individuals with unmet needs such as food, shelter, rent, utility, medical assistance. Established in 1965, Patriot Federal Credit Union has 10 branch locations and has assets in excess of \$730 million and serves more than 72,000 members locally and worldwide.

Chambersburg Area School District (CASD) recently released updates regarding end-of-year events for local students. A live graduation ceremony is currently planned for CASHS and CMS on May 28 and 29, respectively, with back-up dates on June 25-26 and July 30-31. A combined prom will be held for both schools at CASHS on June 20, with a back-up date of July 25. These activities are dependent upon social distancing restrictions being lifted. Visit CASDOnline.org for more details.

To help lower the impact of social isolation of area seniors, **United Way of Franklin County** is inviting community members to send encouraging and friendly notes, poems, drawings, and stories to senior citizens in independent and assisted living facilities who might be happy to read something from a friendly pen. Those wishing to send an uplifting message can mail to the Agency on Aging office,

whose staff will ensure delivery to places in the community where letters will be received and appreciated. Pen Pals may address letters to "Dear Friend" and mail to: Franklin Senior, Franklin County Area Agency on Aging, 600 Norland Ave., Suite #11, Chambersburg, PA 17201. United Way's website is home to the Franklin County COVID-19 Resources Hub. Find community resources by visiting UWFCPA.org.

SpringHill Suites by Marriott at 451 Gateway Avenue in Chambersburg is offering a safe, quiet place for community members to work from 8 a.m. to 5 p.m. at only \$50 per day (plus tax). All rooms are cleaned daily with additional sanitizing done to ensure the health and safety for all. If you need a safe space to work, call Amanda at 717-263-1300 or visit Marriott.com/HGRSC.



The **Chambersburg Area School District Foundation (CASDF)** is seeking the community's support to provide every senior in the district with a yard sign (pictured). The purpose of the sign is to let the seniors know they are in our

thoughts and their community is proud of them. There are 700 seniors in the district, so CASDF is asking for the community's help to provide a sign to every senior. If you are interested in a sign for your yard or donating one to a senior please use the following link to purchase <https://secure.qgiv.com/for/casdf/event/814777/>. Thank you!

In response to the current health crisis, **F&M Trust** recently announced a donation of \$100,000 to support COVID-19 relief efforts in Central Pennsylvania. The contribution will provide those on the front lines of the coronavirus crisis, including first responders and nonprofit organizations, with the resources they need to act quickly and protect the most vulnerable. Relief funds will be distributed to the United Way of Franklin County, first responders, including fire companies and EMS units that support F&M Trust's 22 Community Offices across Central Pennsylvania. Of the bank's donation, \$10,000 was contributed by the employees of F&M Trust. To find the most up-to-date information about F&M Trust's response to the coronavirus pandemic, please visit FmTrust.Bank/Covid-19.

Wilson College has named Tina L. Hill as its new director of intercollegiate athletics. Hill, who brings more than 29 years of experience in NCAA Division III intercollegiate athletics administration, will replace longtime faculty member and Wilson athletics director Lori Frey, who last year announced her desire to return to teaching full time. Hill, who has served as the executive director of intercollegiate athletics at Virginia Wesleyan University in Virginia Beach for the past two years, will officially join Wilson on July 1. She served as director of athletics at Randolph College in Lynchburg, Va., from 2008 to 2018 and in the same position at Cornell College in Mount Vernon, Iowa, from 2002 to 2007. Frey, who has spent virtually her entire career at Wilson—including serving as director of athletics since 1988—will continue at the College as professor of physical education.

GREATER CHAMBERSBURG VIRGINIA HARRIGER CHAMBER FOUNDATION EXEC. DIRECTOR

717-264-7101 ext. 205 | gharriger@chambersburg.org | Chambersburg.org/ChamberFoundation | FranklinCountyWorks.com



YOUTH VIRTUAL GRADUATION

Leadership Franklin County (LFC) Youth completed their leadership journey in April with a virtual graduation on April 22. Friends, family and school partners celebrated the 27 students from eight different Franklin County high schools as they presented overviews of their 'bekind' school projects and reflected on their leadership lessons from the program. Overall, students noted they improved communication skills, team building and learned to be better listeners in group settings. They also noted that field trips and volunteer events made them more aware of their community and ways to help. School projects ranged from food drives, kindness projects for peers, elementary or pre-school students, homemade cards for elderly and military, creating bulletin boards as well as celebrating health care workers and teachers.

LFC Youth Sponsor:



2020 LFC Youth Graduates:

Colin Arnold, Grace Baker, Molly Buchanan, Luke Coffman, Max Crawford, Gavin Davidson, Garrett Goshorn, Emma Grove, Christina Grove, Madison Hess, Jenna Hoffmann, Emily Hoover, Katie Kaufman, Garrett Keener, Nathan Kirkwood, Audrey Kough, Angeles Magana-Espinoza, Maddie Patterson, Jared Peck, Micah Plummer, Hannah Russell, Bryson Shaull, Allison Sawicki, Adam Snyder, Alexa Snyder, Dylan Swailes and Bella Weaver.

The steering committee conducted in-school interviews in February and March to select the LFC Youth Class of 2021. In April they selected 25 incoming sophomores who will start their experience with an orientation and retreat session this summer.

EITC CONTRIBUTIONS

The Foundation received two Educational Improvement Tax Credit (EITC) Program donations from **Orrstown Bank** and Truist (formerly **BB&T Bank**) for \$10,000 and \$1,500, respectively. As

an Educational Improvement Organization, the Foundation will use these funds to award grants to local educators through the Technology Innovation Grant Challenge. The Foundation Board will choose those projects that are innovative, add value to curriculum and are advanced academically in nature.

LEADERSHIP COMMUNITY SESSION

Leadership Franklin County (LFC) Community experienced the first virtual LFC session in April with an overview of health care and arts in Franklin County. Heather McEndree, **Cumberland Valley School of Music** and Mary Werdebaugh, **Organic Remedies**, were guest speakers. In addition, the class discussed leadership challenges during this COVID-19 quarantine and creative ways they have adapted to different work patterns. The class continues to work on presentations for their virtual graduation on May 14. The Alumni Committee will name the 2019 LFC Alumni of the Year award during graduation. A reception in their honor will occur this summer or fall to celebrate the class in person.

2020 LFC Community Graduates:

Will Barnum – **Tapestry Technologies**, Kristin Beegle – **Fiserv**, Gio Carannante – **F&M Trust**, Tracy Casey – **Menno Haven**, Glenda Cosby – **Shippensburg University**, Liz Denlea – **Fiserv**, Lisa Eyer – **Fiserv**, Greg Figueroa – **Patriot Federal Credit Union**, Andi Finch – **The Foundry Co-op**, Fallon Finnegan – **F&M Trust**, Lisa Hogue – **F&M Trust**, Heather Kline – **Cumberland Valley School of Music**, Joey Leonard – **Keystone Health**, Brittini Pereschuk – **Orrstown Bank**, Erica Ragno – **Chambersburg Memorial YMCA**, Taylor Rote – **SEK, CPAs & Advisors**, Donna Scherer – **Penn State Extension** and Lynn St. Clair – **Occupational Services, Inc.**

LFC Community Sponsor:



DOWNTOWN CHAMBERSBURG INC. SAM THRUSH PRESIDENT

717-264-7101 ext. 204 | sthrush@chambersburg.org | DowntownCburg.com



DOWNTOWN COVID-19 RESOURCES

As businesses shutter their doors during the global pandemic, Downtown Chambersburg Inc. (DCI) is opening avenues to resources so retailers and restaurants can stay afloat. With many area residents spending more time indoors, the internet has become a vital source of information about restrictions and closures required by federal, state and local government agencies. DCI is using social media to inform the community about available opportunities to keep them engaged and connected with local merchants' products and services.

By visiting DowntownChambersburgPa.com/covid19-business-resources-for-down, you'll find ways to continue supporting downtown businesses, a list of those accepting online orders and resources for our local retailers. In addition, the Downtown Chambersburg Business and Stakeholders Group on Facebook provides tips and collaboration with small businesses to survive the impact of Covid-19.

E-GIFT CARD PROGRAM HELPS DOWNTOWN MERCHANTS

An e-gift card program supporting downtown businesses has been established to allow people to patronize those businesses that have shut down due to the coronavirus.

Downtown Chambersburg Inc. (DCI) and **Downtown Business Council of Chambersburg (DBC)** teamed up to sell the gift cards with a special promotion. Thanks to funding from DBC, online shoppers who buy a gift card worth \$50 or more from a business listed will receive a bonus \$25 gift card to that business. There is a limit of one \$25 bonus per shopper, per business and patrons can purchase cards from retailers offering wares such as women's clothing, jewelry, art and gifts.

The online gift cards are meant to be printed and taken into the stores once it is safe for businesses to reopen. Those who wish to use their cards before then may call the business directly and ask about making other arrangements. As of the end of April, the effort has generated \$6,900 with hopes of reaching \$15,000. The program will be open through the end of May. For questions, please contact Sam (details above).

DCI CHATS

Downtown Chambersburg Inc. has conducted interviews via Zoom (aired on Facebook) in an effort to highlight our downtown businesses, and showcase how they have changed their operations due to Covid-19. Interviewees have included **GearHouse Brewing Co., Roy-Pitz Brewing Co., The Foundry Arts Coop,** The Garage Studios, Remix Design, Sweet Rollers and many more! Check them out today at [Facebook.com/DowntownCburg](https://www.facebook.com/DowntownCburg).

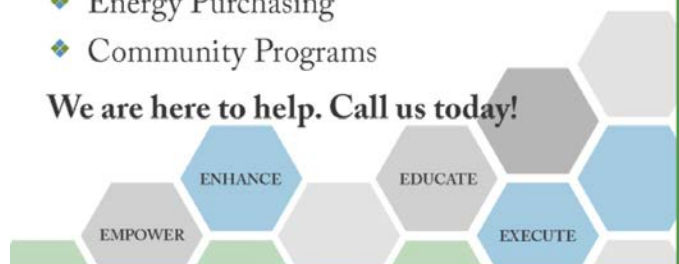


ChamberChoice delivers unique and cost effective products and services. We begin by listening to each member situation, understanding budget, and defining objectives.

We serve Chamber members in key areas:

- ◆ Health Insurance and Employee Benefits
- ◆ ACA/ERISA Compliance
- ◆ Business Insurance
- ◆ Energy Purchasing
- ◆ Community Programs

We are here to help. Call us today!



1.800.377.3539

www.chamberchoice.com
chamberchoice@jrgadvisors.net

solutions. service. strategy.

QuickBooks® Step-by-Step Training Manual Provided



Dates: June 17, 2020
July 22, 2020

Location: 720 Norland Avenue
Chambersburg, PA 17201

Time: 9:00AM – 12:00PM



Scan QR code with
mobile device for more info.

4 Easy Ways to Register Now!

Call: 800-555-9510 or 717-267-2100

Fax Completed Registration: 717-267-1464

On-Line: www.schultheisscpa.com – click on the resources link

Mail Below Registration: Schultheiss & Associates
720 Norland Avenue
Chambersburg, PA 17201

Is Your Office Making These 21 Critical Mistakes?

- 3 QuickBooks® errors that hurt cash flow in your office.
- 7 Mistakes to avoid in “costing” and why they hurt you.
- 5 Ways to reduce payroll headaches - the one best fix.
- 3 Reports that will stop wasted expenses and overhead.
- 3 Critical errors in setting up your chart of accounts.

Who Should Attend QuickBooks® Training?

- **Spouses** who help with the books on a part-time basis.
- **Business owners** who want to avoid mistakes and improve cash flow.
- **Partners** looking for long-term answers to accounting problems.
- **Bookkeepers** who need a better understanding of QuickBooks®.
- **First-time** users just new to QuickBooks® software.
- **Seasoned users** who want to take advantage of the advanced features of QuickBooks®.

Course: \$129 per person. \$100 per person if two or more attendees from same company.
(includes continental breakfast)

Name: _____

Company Name: _____

Address: _____

City: _____ State: _____ Zip: _____

Phone: _____

E-Mail: _____

Additional Registrants: 1. _____

2. _____

Payments Accepted: Check ♦ Cash ♦ Mastercard ♦ Visa



Visit our Facebook page – www.facebook.com/schultheisscpa.com



Greater Chambersburg Chamber of Commerce
 100 Lincoln Way East, Suite A
 Chambersburg, PA 17201
 717-264-7101
 Chambersburg.org

PRSRTD STD
 U.S. POSTAGE
PAID
 Permit #7
 Chambersburg, PA

EVENTS DETAILS / REGISTER

CHAMBERSBURG.ORG/EVENTS

MAY

- 05 CINCO DE MAYO MINGLE MAYHEM (VIRTUAL MIXER)**
3-4 P.M. VIA ZOOM
- 06 TELE-TOWN HALL WITH CONGRESSMAN JOYCE**
8 -9 A.M. VIA CONFERENCE CALL
- 14 LFC COMMUNITY VIRTUAL GRADUATION**
5 - 6:30 P.M. VIA ZOOM
- 19 LFC COMMUNITY INFO SESSION FOR PROSPECTIVE STUDENTS**
12:30 - 1 P.M. VIA ZOOM
- 21 LFC COMMUNITY INFO SESSION FOR PROSPECTIVE STUDENTS**
4 - 4:30 P.M. VIA ZOOM

JUNE

- 05 25TH ANNUAL CHAMBER GOLF TOURNAMENT** WITH GRAND SPONSOR SPHERION
7 A.M., CHAMBERSBURG COUNTRY CLUB, 3646 SCOTLAND ROAD, CONTINGENCY DATE OCT. 1
- 11 LUNCH & LEARN: CORPORATE SOCIAL RESPONSIBILITY**
11:30 A.M. - 1 P.M. AT THE CHAMBERSBURG CHAMBER. MAY BE HELD VIA ZOOM IF NEEDED

Valley Agency COMPANY **INSURANCE** (717)264-4311

"Corner of Norland & Fifth Avenues"



- Friendly Professional Service
- Competitive Pricing from Multiple Companies
- Stability of serving the community for over 100 years!



Working together to help our members prosper and to enhance the quality of life in the Chambersburg area.



5-star accredited by the U.S. Chamber of Commerce



The Outlook is a publication of the Greater Chambersburg Chamber of Commerce (GCCC). Ideas, opinions and statements expressed in articles by contributors are not necessarily those of the GCCC. Neither the publisher nor any individual associated with any branch of production, nor the advertisers, will be held liable for typographical misprints contained herein. Content submitted by members of the GCCC may contain advertisements and/ or links to third party sites. The GCCC does not endorse nor advocate for the advertised product, event, service or company, nor any of the claims made by the content and takes no responsibility for promises made or the quality/reliability of the products/services offered.