



Debbie Haldeman

**Regional Manager
Northern CA/ Reno**

**Aggregate Development,
Government Affairs &
Community Relations**



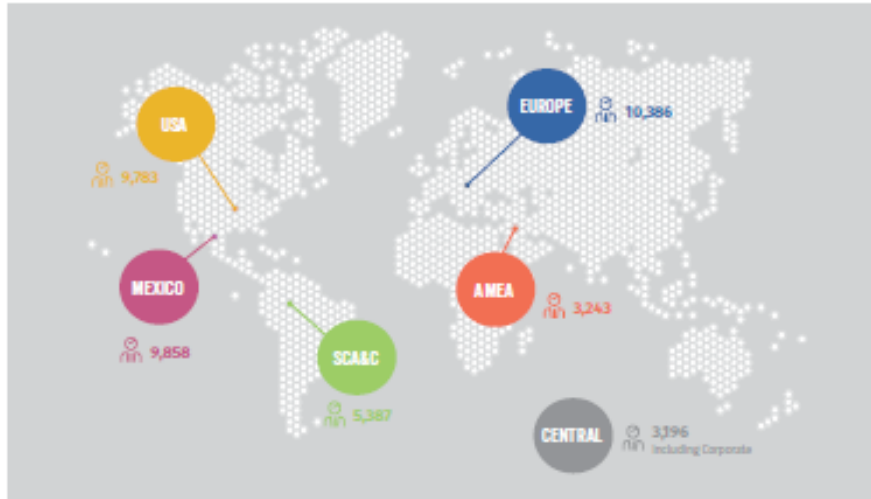
Cemexusa.com



Cement

Aggregates

Ready Mix Concrete



Number of employees

SCA&C - South, Central America and the Caribbean

AMEA - Asia, Middle East and Africa



CX
LISTED
NYSE



+41,000
 EMPLOYEES AROUND THE WORLD

93 million tons
 ANNUAL CEMENT PRODUCTION CAPACITY

54
 CEMENT PLANTS +13 WITH MINORITY PARTICIPATION

1,555
 READY-MIX CONCRETE PLANTS



52 million m³
 ANNUAL PRODUCTION OF READY-MIX CONCRETE



151 million tons
 AGGREGATES ANNUAL PRODUCTION

305
 AGGREGATES QUARRIES

247
 LAND DISTRIBUTION CENTERS

63
 MARINE TERMINALS

Ensure Safety



Focus on Customers



Pursue Excellence



Work as One CEMEX



Act with Integrity



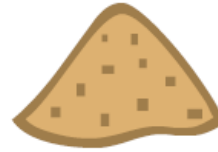
**Our Culture/
Our Values**

Concrete ingredients:

Water



Sand



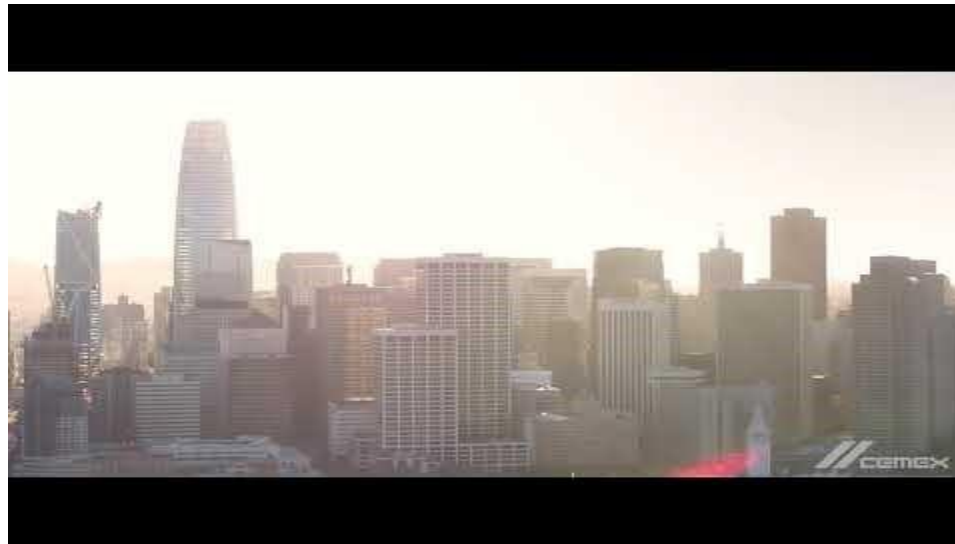
Crushed Rock



Cement



Construction Aggregates





Local rock quarries have been a major source of construction aggregate for the community and region.



ONE OF OUR PLANTS LOCATED AT ELLIOT (FORMERLY CALIFORNIA ROCK COMPANY) WHICH PRODUCED THE SAND, ROCK AND GRAVEL FOR MANY OF SAN FRANCISCO'S AND OAKLAND'S SKYSCRAPERS.



ENORMOUS STOCK PILES OF SAND, ROCK AND GRAVEL AT ONE OF OUR ELLIOT PLANTS (CALIFORNIA BUILDING MATERIAL COMPANY). THESE EXTENSIVE STOCK PILES ENABLE THIS PLANT TO SHIP 1,200 CARS PER MONTH.



THIS LARGE STEAM SHOVEL WHICH TRAVELS ON CAYNEPILLARS AND DIPS 600 TONS OF SAND, ROCK AND GRAVEL PER HOUR, IS LOCATED AT ONE OF OUR ELLIOT PLANTS (FORMERLY CALIFORNIA BUILDING MATERIAL COMPANY). THE IMMENSE DIPPER ON WAGNET PICKS UP THREE CUBIC YARDS (TRUCK LOAD) OF CONCRETE AGGREGATES AT EACH DIP. IT IS LOADED INTO ONE OF OUR SIXTY TON BROADGAGE CARS WHICH ARE AUTOMATICALLY DUMPED BY AIR. THIS CAR IS PULLED BY ONE OF OUR ONE GASOLINE LOCOMOTIVES. THE STEAM SHOVEL IS OPERATED BY ELECTRICITY, ONE OF CALIFORNIA'S CHEAP FUELS, ON ACCOUNT OF OUR NUMEROUS AND EXTENSIVE POWER PLANTS WHICH GENERATE THE ELECTRICITY IN OUR HIGH MOUNTAINS.



IMMENSE CONCRETE BINS AT ONE OF OUR ELLIOT PLANTS (FORMERLY KROHN-JAMISON COMPANY). NOTE SUBSTANTIAL STEEL CONSTRUCTION CONNECTED WITH CONCRETE TANKS.



SAN FRANCISCO'S CITY HALL, WHICH DOMES EXTENDS IN THE AIR FORTY-SEVEN FEET HIGHER THAN THE CAPITOL AT WASHINGTON, D.C. LOCATED IN SAN FRANCISCO'S CIVIC CENTER. NOTE YEAR ROUND FLOWER GARDEN ADJOINING CITY HALL. THOUSANDS OF TONS OF OUR SAND, ROCK AND GRAVEL USED IN THE CONCRETE OF THIS BUILDING.



FLEISHACKER POOL, LARGEST OUTDOOR SWIMMING POOL IN THE WORLD, LOCATED NEAR PACIFIC OCEAN, SAN FRANCISCO AND BUILT ENTIRELY OF CONCRETE. SAND, ROCK AND GRAVEL FURNISHED BY OUR PLANT.



**Roads, homes,
businesses, and
public
infrastructure.**



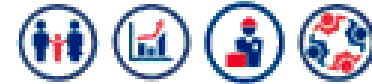


Calaveras Dam



Oaks Logistics Business Park, Livermore

Project Profile



Gillig Bus Manufacturing, Livermore, CA

Rick Martinez

Senior Accounts Manager, Nor Cal RMX



Customer Centricity

Triangular-Big D-Baymarr-Gesick

Safety

Challenging site in the dark and wet conditions with many other trades present

- **3 buildings**
- **750,000 square feet**
- **54,500 cubic yards**
- Panels poured before interior slabs; casting slabs made that were not in budget
- Inside pours with various other trades
- Accelerated mix designs due to roof installed earlier to avoid rain
- Checkerboard pouring schedule of areas not affected by rain and mud
- Concrete paving mixes to withstand truck traffic





**Quarries help grow
the local economy
and create jobs.**

1.8 million
jobs supported

Annual earnings
of over **\$86 billion**



Aggregate &
Construction
industry =
\$230B or 16%
of all California
industry output

Concrete & Asphalt
are the **#1** most
recycled material



California's **4th**
largest industry



1 job in the aggregate
industry creates
another **3.24 jobs** in
support industries



#AggregatesMatter

400 tons in an
average house



Concrete is used
more than any other
manmade material



School uses
approx. **15,000**
tons

1 mile of 6-lane
interstate highway
requires about
113,500 tons of
aggregate



\$1 of
aggregate sales
produces an
additional \$2.38
of sales in other
industries



80% of asphalt
from roads is reused

Distance Matters:
the cost of
transporting
aggregates increases
22 cents/ton per mile



>5-7 tons per
person used
annually

Quick Facts

San Francisco
region is projected
to need more **than**
2 billion tons of
aggregate in the
next 50 years.

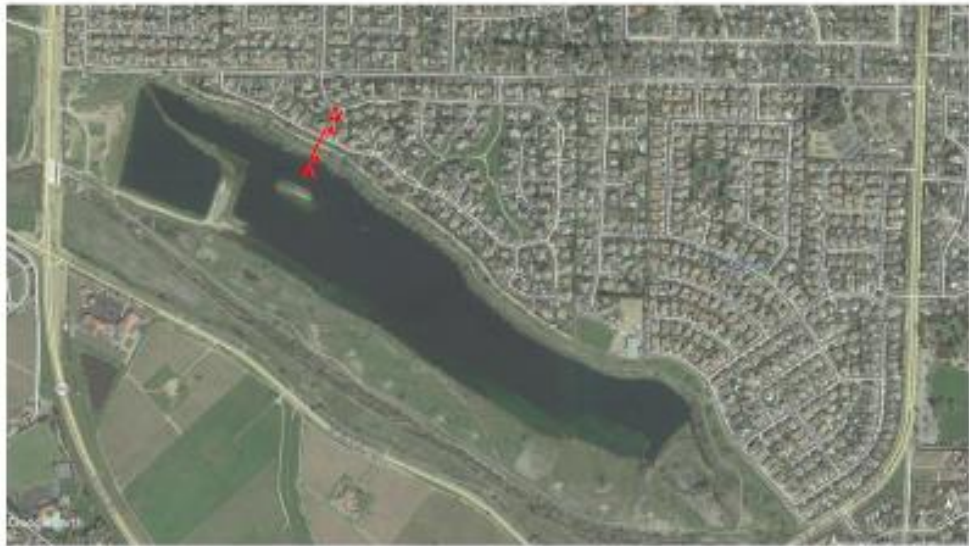




Reclamation



Restore the property to a state that can benefit our neighbors for generations to come.



KEY MAP





Water Supply and Water Management For the Region



Sustainability

ENERGY STAR CERTIFICATION



MIAMI PLANT, U.S.A.



FOUR CEMEX USA CEMENT PLANTS EARN ENERGY STAR® EPA CERTIFICATION

Four of our cement installations earned the U.S. Environmental Protection Agency's (EPA) ENERGY STAR® certification for 2017, ranking in the top 25% for energy conservation when compared to similar facilities:

- › **Brooksville South, Florida** (fifth certification)
- › **Miami, Florida** (seventh consecutive certification)
- › **Clinchfield, Georgia** (11th consecutive certification)
- › **Victorville, California** (sixth consecutive certification).

Throughout the year, all of the recognized plants followed energy-efficiency principles established by the EPA's ENERGY STAR® Guidelines for Energy Management. The plants implemented energy conservation and monitoring technologies, promoted energy-efficiency awareness among employees, and completed energy-reduction projects.

Sustainability



Community Involvement





Thank you

To learn more –

www.cemexusa.com

www.cemexeliotfacility.com

www.cemexnature.com