

# TEXAS INTRASTATE FIRE MUTUAL AID SYSTEM (TIFMAS)



**Carter Johnson  
and J.J. Wittig**  
**ESD Fire Chiefs**  
**State and Deputy State  
Coordinators**

# HISTORY

- Created by state law in 2007
- First deployed 2008
- Operated through the Texas A&M Forest Service (TAMFS)
- Funded and approved by the Texas Division of Emergency Management (TDEM)

# HISTORY

- Guided by a Stakeholder Group
- Operated by local fire department personnel serving as Resource Coordinators
- Staffed by local firefighters



# ALL RISK – ALL HAZARD INTEGRATED STATEWIDE MUTUAL AID RESPONSE



**Hurricanes**

**Wildfires**

**Tornados**

**Floods**

**Fire Dept.  
Support**

**Other**

# ROLES



- **Local Fire Departments are the Initial and Extended Attack Forces**
- **Texas A&M Forest Service reinforces local fire departments**

# ROLES



- **TIFMAS provides a “ready reserve” for local departments through the state during emergencies**
- **Federal & State agencies reinforce TAMFS**

# PARTICIPANTS (SEPTEMBER 2023)

## DEPARTMENTS

63 Volunteer

102 Combination

128 Career

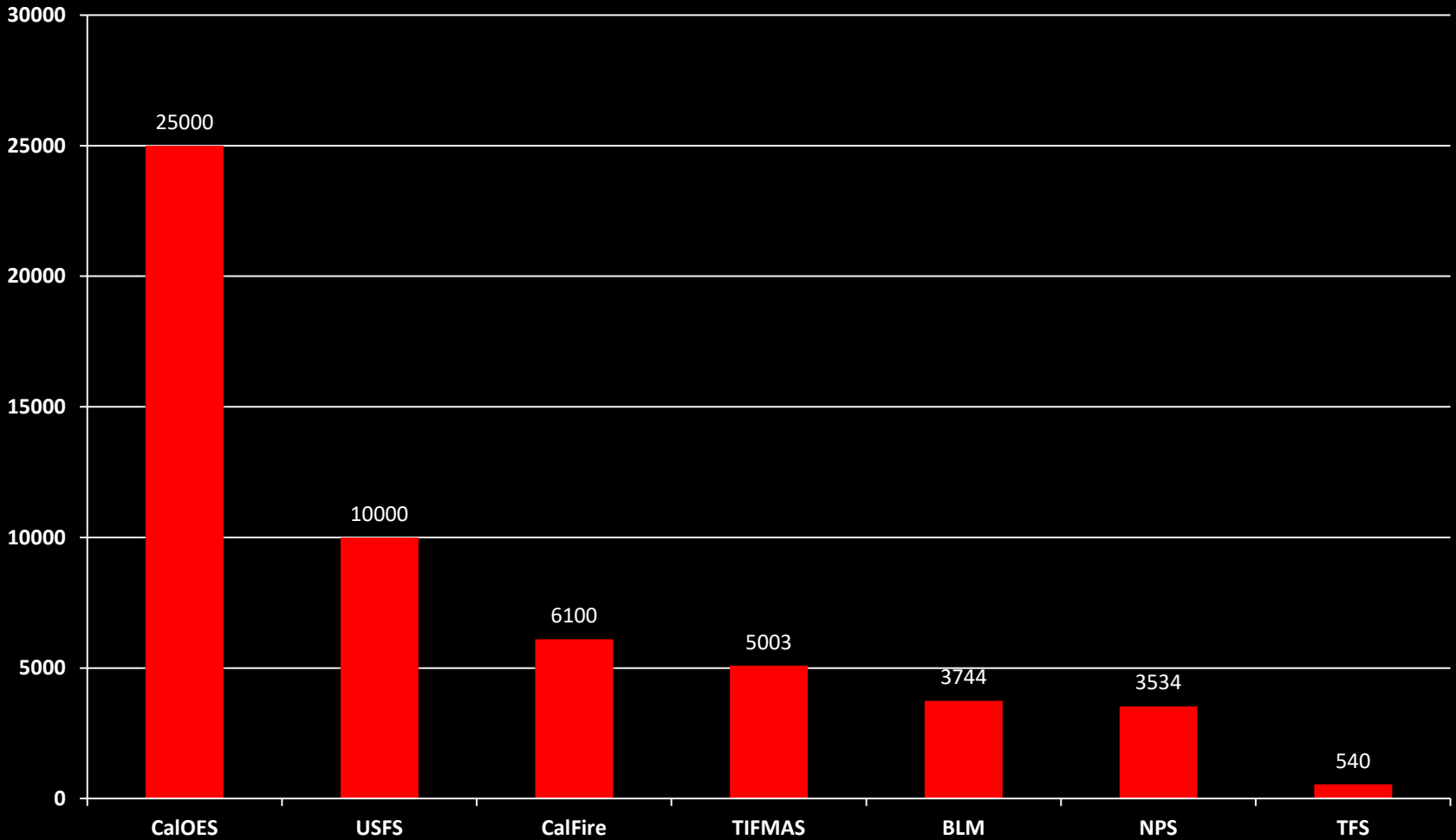
## MEMBERS

9,934 All-Hazard

5,003 Wildland

# WILDLAND FIREFIGHTERS

## Credentialed/Authorized FTE Firefighters





# QUALIFICATIONS



- All Hazards/Structural
- Industrial/Specialized
- Wildland



# ALL HAZARDS

**SFFMA  
Accredited  
FF I/II or  
Advanced**

**TCFP  
Basic FF**



# WILDLAND



**Engine  
Operator**

**Faller**

**ICT4**

**Basic  
Wildland**

**FF1  
ICT5**

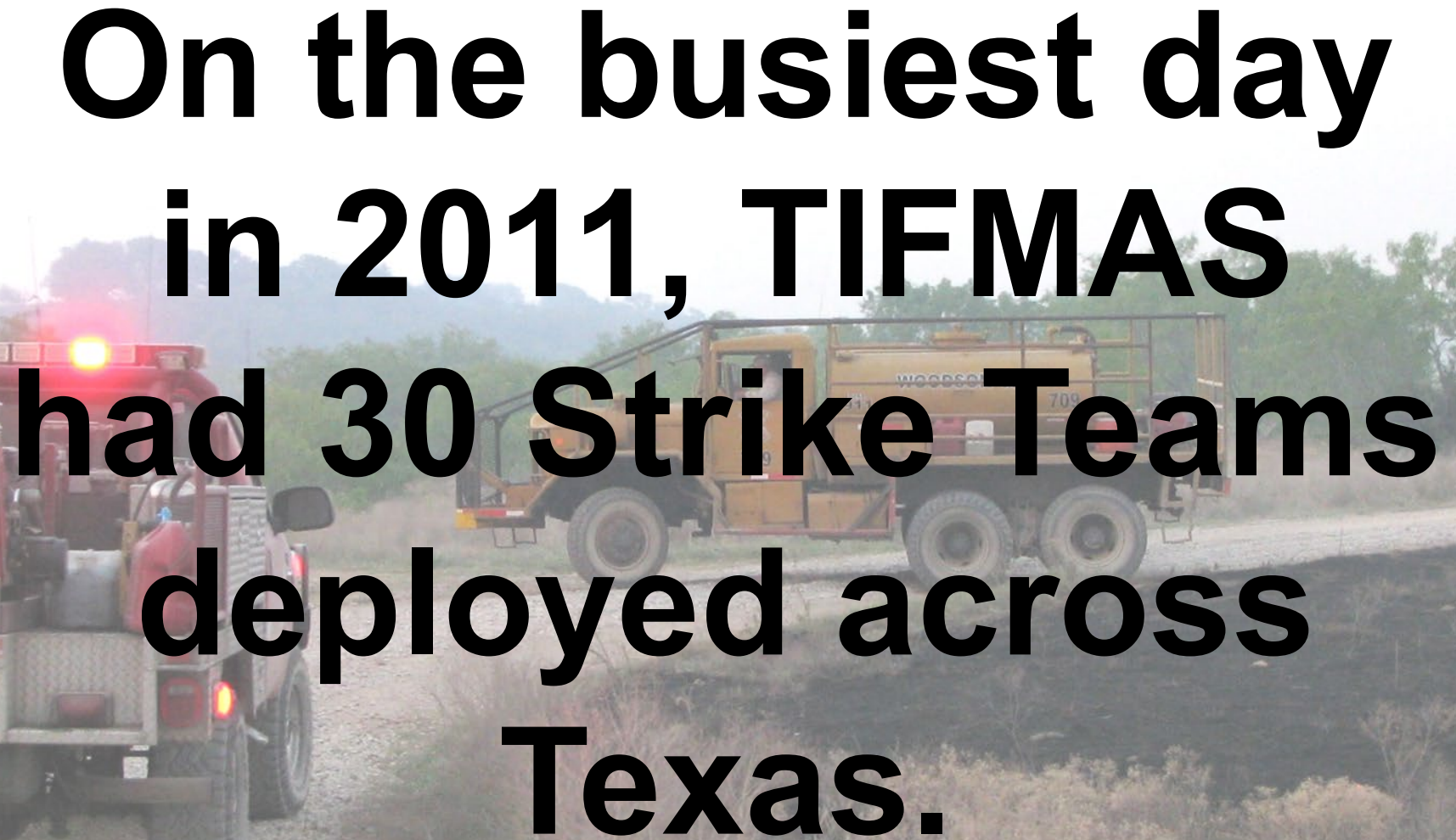
**Engine  
Boss**

**Strike Team  
and  
Task Force  
Leader**

**Division  
Supervisor**


# **CAPABILITIES (WILDLAND)**

**On the busiest day  
in 2011, TIFMAS  
had 30 Strike Teams  
deployed across  
Texas.**

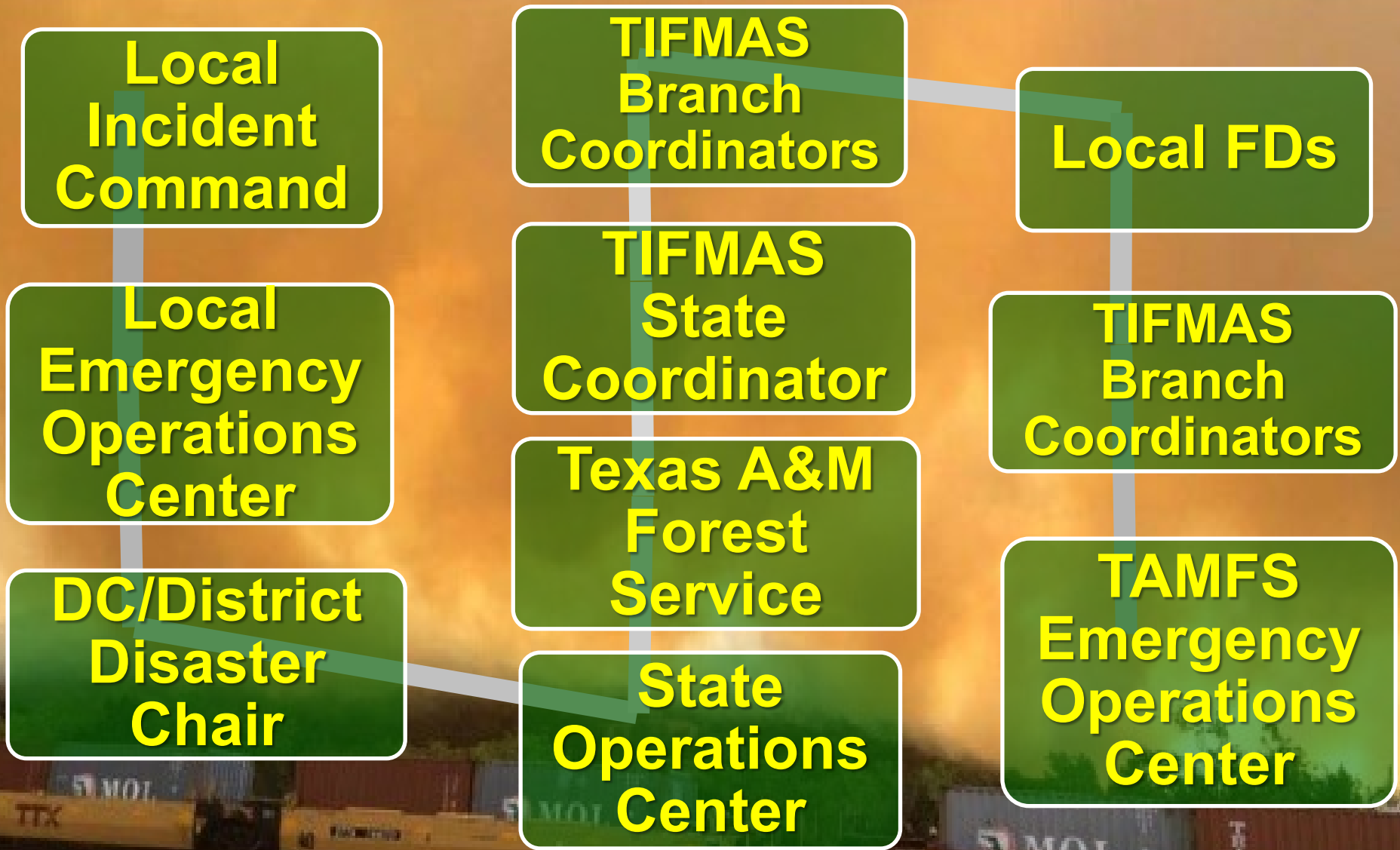
A photograph of a red fire truck and a yellow utility truck on a dirt road in a rural, hilly area. The fire truck is on the left, and the utility truck is on the right. The background shows a dirt road winding through a hilly, wooded area. The text is overlaid on the image.

# **CAPABILITIES (HARVEY)**

**TIFMAS deployed  
985 personnel and  
296 pieces of  
equipment to the  
Texas Gulf coast.**

A dramatic scene of firefighters battling a large fire in a flooded area. The fire is intense, with bright orange and yellow flames rising from a structure. Several firefighters in dark gear and helmets are visible in the foreground, silhouetted against the fire. The ground is covered in water, reflecting the light from the fire. The background shows more of the burning structure and some trees.

# ACTIVATION



# TIFMAS BRANCH RESOURCE COORDINATORS



**STATE COORDINATOR**  
Chief JJ Wittig  
Travis County ESD 3  
Oak Hill FD  
[jwittig@oakhillfd.com](mailto:jwittig@oakhillfd.com)



**DEPUTY STATE COORDINATOR**  
Chief Carter Johnson  
Montgomery County ESD 6  
Porter Fire  
[cjohnson@porterfire.com](mailto:cjohnson@porterfire.com)  
832-986-2426



**REGION 7**  
Battalion Chief Fred Barnett  
San Angelo FD  
[fred.barnett@cosatx.us](mailto:fred.barnett@cosatx.us)  
325-234-3199



**REGION 5 & 6**  
Chief Greg Rodgers  
Schartz Fire Department  
[groddgers@schartz.com](mailto:groddgers@schartz.com)  
979-229-6625



**REGION 8**  
Chief Kyle Taylor  
Hays County ESD 5  
Kyle Fire Department  
[ktaylor@kylfire.com](mailto:ktaylor@kylfire.com)  
512-657-0238



**REGION 4**  
Deputy Chief Ray Vaden  
Montgomery County ESD 6  
Porter Fire  
[rvaden@porterfire.com](mailto:rvaden@porterfire.com)  
713-885-8366



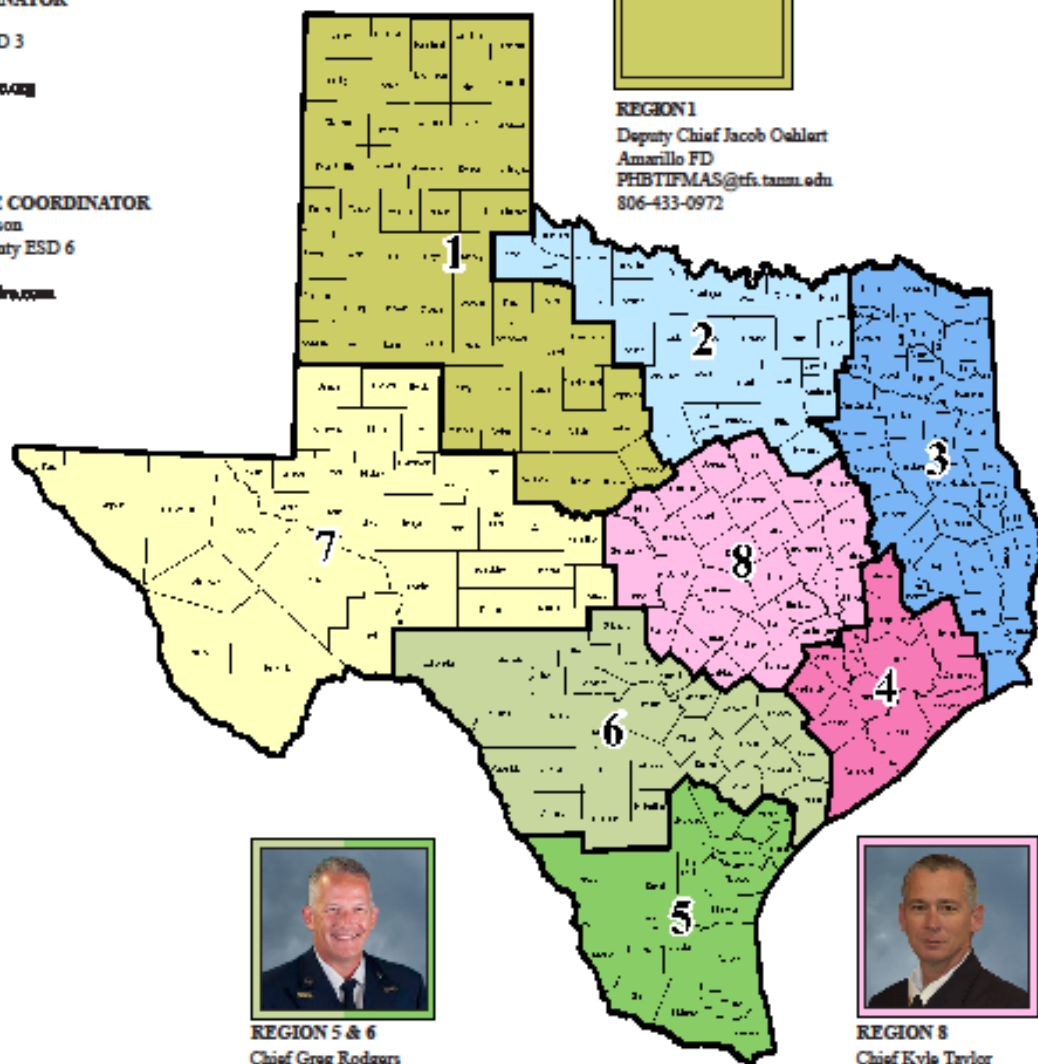
**REGION 1**  
Deputy Chief Jacob Oehlert  
Amarillo FD  
[PHBTIFMAS@trf.tamug.edu](mailto:PHBTIFMAS@trf.tamug.edu)  
806-433-0972



**REGION 2**  
Asst. Chief Scott Enger  
Roanoke Fire/Rescue  
[senger@roanoketexas.com](mailto:senger@roanoketexas.com)  
817-822-8991



**REGION 3**  
Fire Marshal Michael Brown  
Nacogdoches FD  
[brownm@ci.nacogdoches.tx.us](mailto:brownm@ci.nacogdoches.tx.us)  
936-559-2578



# GRANTS

For departments not eligible for 2604



\$800,000  
Apparatus

\$200,000  
Training



# APPARATUS



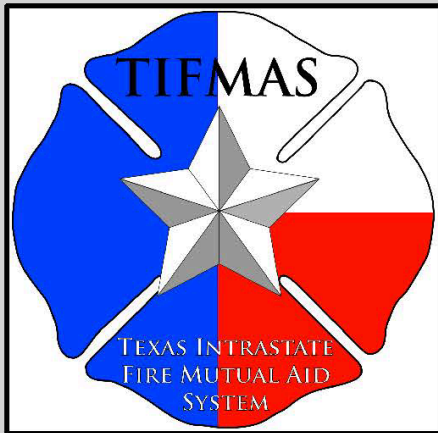
Type III



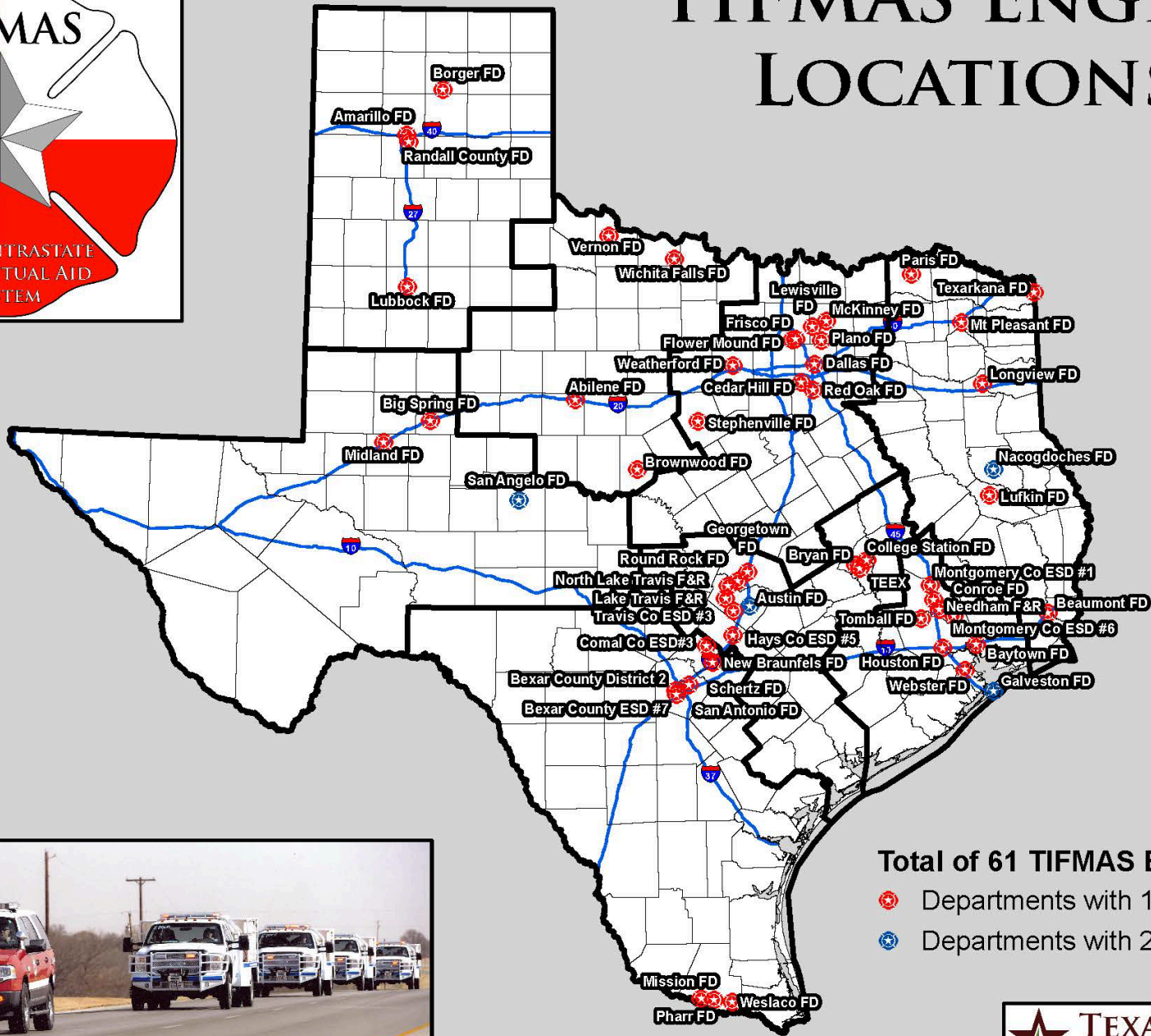
Tactical Tender



Type VI



# TIFMAS ENGINE LOCATIONS



**Total of 61 TIFMAS Engines**

- Departments with 1 Engine
- Departments with 2 Engines



# HOW TO PARTICIPATE

Individual  
Departments

Partnering  
Departments



# HOW TO PARTICIPATE

## Recognized TIFMAS Qualifications

- All Hazards (Structural)
- Basic Wildland (FFTII)
- Engine Operator (ENOP)\*
- Basic Faller (FAL3)\*
- Wildland Firefighter I (FFI/ICT5)
- Engine Boss (ENGB)

# HOW TO PARTICIPATE

## Recognized TIFMAS Qualifications, cont.

- Incident Commander Type 4 (ICT4)
- Strike Team Leader (STEN)
- Task Force Leader (TFLD)
- Division / Group Supervisor (DIVS)
- \*\*Red Card

# WHY PARTICIPATE?

- What kind of real life, hands-on training do your personnel receive for major disasters / incidents?
- IF you could pay for that kind of training, how much do you think it would cost?
- If a disaster or significant incident occurs, what real life experiences do your personnel have to fall back on?

# RECENT CHANGES

## Deployment Requirements Effective January 1, 2024

- Type VI Engines require at least an ENGB(t)
- Strike Team Leader (no trainee) required as STEN
- Water Tenders require at least an ENGB(t)
- Moderate Pack Test required for in state deployments  
Arduous Pack Test required for out of state deployments
- Minimum deployment commitment changed to 7 days  
excluding travel

# DEPLOYMENT

- Deployments are for a minimum of seven (7) work days but 14 days are preferred. This can be extended another seven (7) days based on response needs and with home agency approval.  
\*Travel days not included.
- Wildland deployments require personnel to be self-sufficient for three (3) days (tents, food/MREs, etc.)



# REIMBURSEMENTS

All Deployments are reimbursed  
“Portal-to-Portal”

- Reimbursed for all hours from time deployment begins to time returned to home unit
- Vehicles are reimbursed based on actual hours worked (NO fuel or other maintenance items)

# REIMBURSEMENTS

- Includes up to two hours prior to deployment for preparation
- Includes up to two hours after return for returning equipment to service
- Includes “Backfill” for normal shift when a minimum staffing policy is in place

# REIMBURSEMENTS

Resources returning to their home base with regularly scheduled shift the day of return or the day following their return:

- Additional backfill not to exceed 24 hours will be granted
- Ensures proper rest and safety for firefighters

# REIMBURSEMENTS

- Per Diem follows local agency guidelines
- The TIFMAS Business Manual provides a model guideline if the local agency does not have one
- Now includes a 90-day deadline from demobilization to submit reimbursement

# REIMBURSEMENTS

**APPARATUS**  
(per current FEMA Schedule)

Type VI - \$70.33/hr

Type III - \$70.33/hr

Type I - \$74.57-\$81.40/hr

Tender - \$79.00-119.50/hr

Ladder - \$121.00-\$146.43/hr

Boat - \$12.55-\$16.58/hr

Command/SUV - \$19.62/hr

**MEMBERS**

Career-Actual Cost

Volunteer-\$14/hr

# REIMBURSEMENTS

Deployment

```
graph TD; A[Deployment] --> B[Reimbursement Request]; B --> C[TDEM Review]; C --> D[Governor's Audit]; D --> E[Payment (goal is within 90 days)];
```

Reimbursement Request

TDEM Review

Governor's Audit

Payment (goal is within 90 days)

# **2024 TIFMAS Symposium**

**September 17-20  
Waco**

A fire truck is driving on a road towards a large fire in the distance. The sky is dark and smoky. The text is overlaid on the image.

**TIFMAS**

**Texas Firefighters**

**Helping**

**Texas Firefighters**

**[www.TIFMAS.org](http://www.TIFMAS.org)**



# TIFMAS BRANCH RESOURCE COORDINATORS



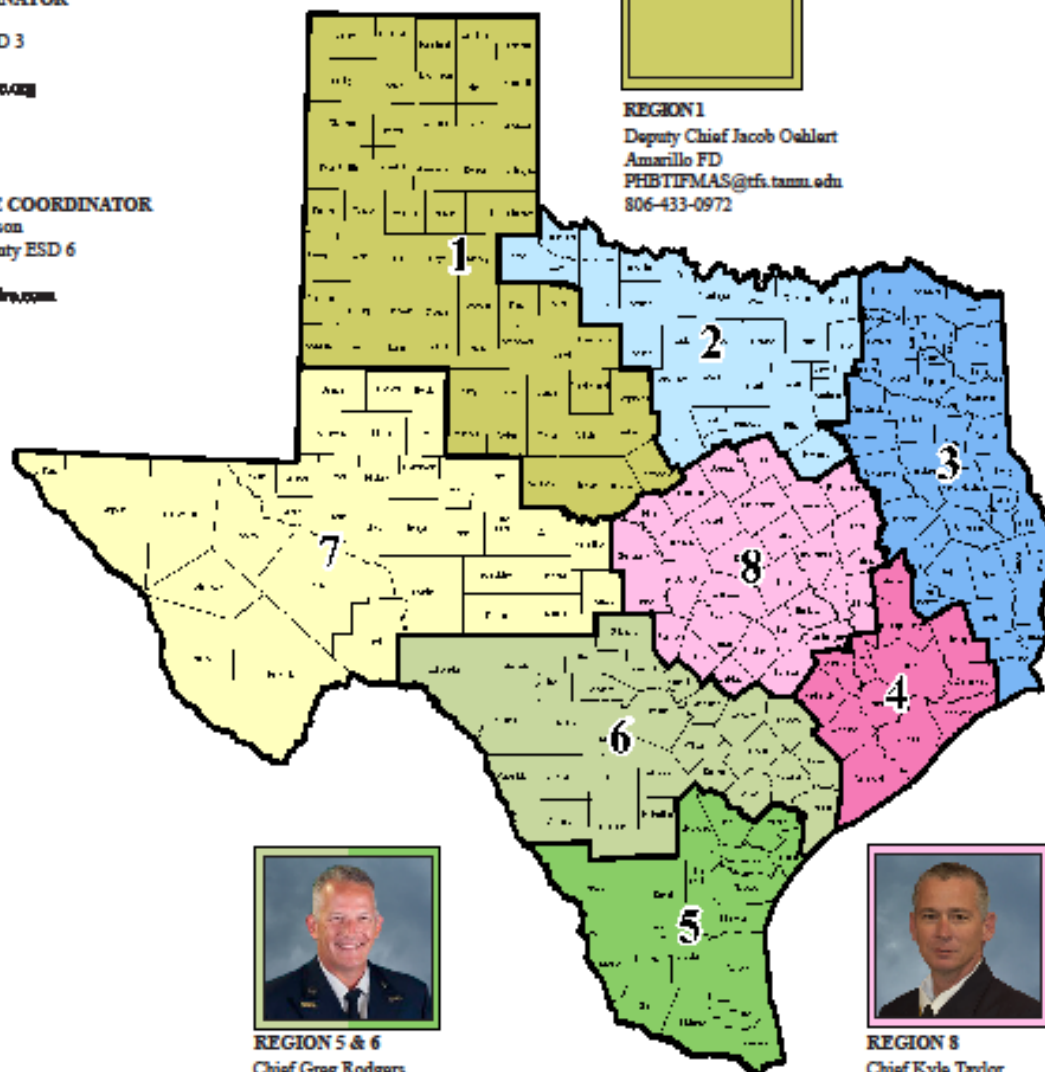
**STATE COORDINATOR**  
Chief JJ Wittig  
Travis County ESD 3  
Oak Hill FD  
[jjwittig@oakhillfire.org](mailto:jjwittig@oakhillfire.org)



**DEPUTY STATE COORDINATOR**  
Chief Carter Johnson  
Montgomery County ESD 6  
Porter Fire  
[cjohnson@portfire.com](mailto:cjohnson@portfire.com)  
832-986-2426



**REGION 7**  
Battalion Chief Fred Barnett  
San Angelo FD  
[fred.barnett@cosatx.us](mailto:fred.barnett@cosatx.us)  
325-234-3199



**REGION 1**  
Deputy Chief Jacob Oehlert  
Amarillo FD  
[PHBTIFMAS@tfs.tamug.edu](mailto:PHBTIFMAS@tfs.tamug.edu)  
806-433-0972



**REGION 2**  
Asst. Chief Scott Enger  
Roanoke Fire/Rescue  
[seagar@roanoke-texas.com](mailto:seagar@roanoke-texas.com)  
817-822-8991



**REGION 3**  
Fire Marshal Michael Brown  
Nacogdoches FD  
[brownmm@ci.nacogdoches.tx.us](mailto:brownmm@ci.nacogdoches.tx.us)  
936-559-2578



**REGION 5 & 6**  
Chief Greg Rodgers  
Schartz Fire Department  
[groddgers@schartz.com](mailto:groddgers@schartz.com)  
979-229-6625



**REGION 8**  
Chief Kyle Taylor  
Hays County ESD 5  
Kyle Fire Department  
[kxtaylor@kylefire.com](mailto:kxtaylor@kylefire.com)  
512-657-0238



**REGION 4**  
Deputy Chief Ray Vadan  
Montgomery County ESD 6  
Porter Fire  
[rvadan@portfire.com](mailto:rvadan@portfire.com)  
713-885-8366

