



## 2020 ANNUAL CONFERENCE

### CASE STUDY: BUILDING A FIRST RESPONDER ORGANIZATION

MICHAEL MEGNA  
FRO ADMINISTRATOR



ROUND MOUNTAIN VOLUNTEER FIRE & FIRST RESPONDER ORGANIZATION

1

1

## BLANCO COUNTY DEMOGRAPHICS

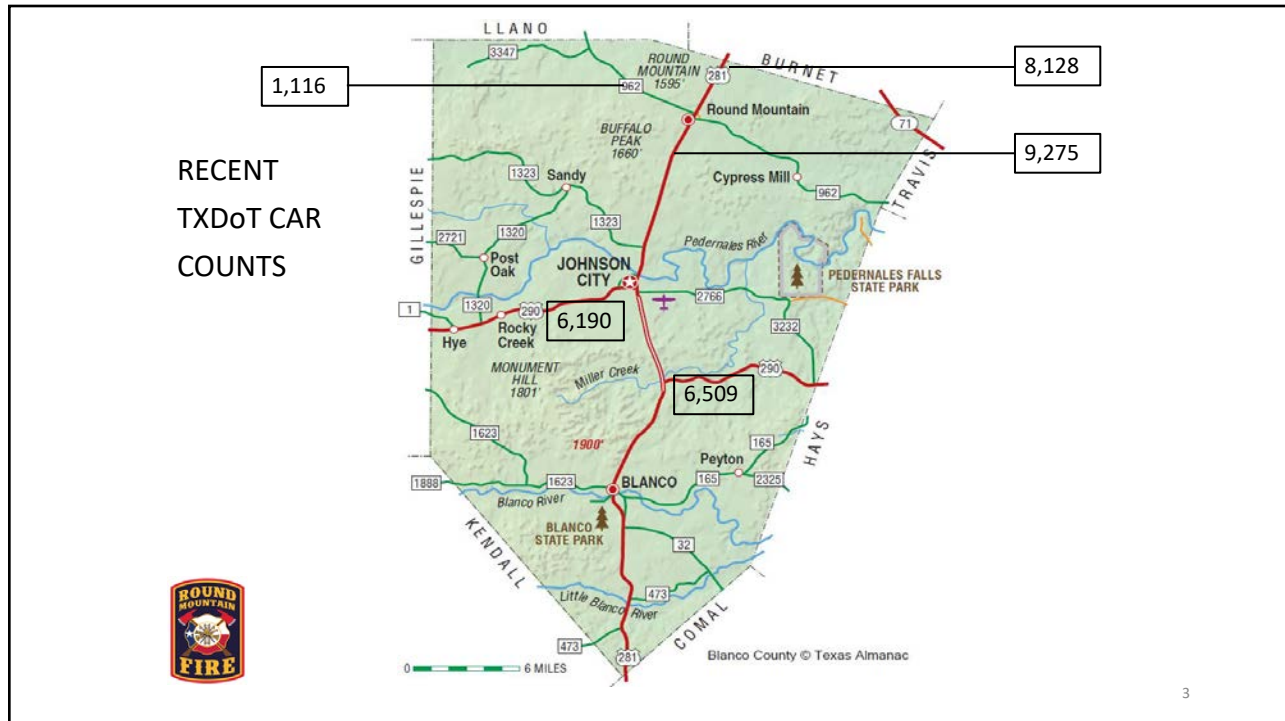
- 710 SQUARE MILES
- 11,702 POPULATION (2018); ↑11.5% vs. 2010
- 2 MAJOR TRAFFIC ARTERIES
  - US HWY 290: AUSTIN – FREDERICKSBURG (WINERIES)
  - US HWY 281: CENTRAL TEXAS – SAN ANTONIO



ROUND MOUNTAIN VOLUNTEER FIRE & FIRST RESPONDER ORGANIZATION

2

2



3

### ROUND MOUNTAIN SERVICE AREA

- SUBDIVISION GROWTH – OLD FAMILY RANCHES
- RETIREE RELOCATION, PRIMARILY FROM URBAN AREAS
- SOME YOUNG ADULTS, CHILDREN
- INCREASED TRAFFIC
- LIGHT INDUSTRIAL BUSINESSES
- RANCHING, HUNTING LEASES & COMMERCIAL
- WILDLAND – URBAN INTERFACE (WUI)

**ROUND MOUNTAIN VOLUNTEER FIRE & FIRST RESPONDER ORGANIZATION**

4

4

## CONSIDERATIONS

- AGING POPULATION / RETIREES (24% >65Y)
- LIKELIHOOD OF TRAUMATIC INJURIES
- INCREASED TRAFFIC FLOW
- EMS RESPONSE TIME
- FIRE CALLED TO MVAs, “ASSIST EMS”
- VOLUNTEER INTEREST
- ADDED BENEFIT TO COMMUNITY



**ROUND MOUNTAIN VOLUNTEER FIRE & FIRST RESPONDER ORGANIZATION**

5

5

## RMVFD DEPARTMENT INFORMATION

- SMALL INCORPORATED AREA
- 2010 CENSUS = 181
- SERVICE AREA ~200 SQUARE MILES
- 18 VOLUNTEERS – 5 EMT, 2 ECA, 5 CERTIFIED WL FF
- 7 “SUPPORTERS”
- 6 APPARATUS – 1 TENDER, 3 BRUSH TRUCKS, 1 ENGINE, 1 COMMAND
- ~ 90 SERVICE CALLS/YEAR; ~ 15 MIN AVG RESPONSE TIME
  - WILDLAND FIRES
  - MOTOR VEHICLE ACCIDENTS
  - MEDICAL / TRAUMA / ASSIST EMS



**ROUND MOUNTAIN VOLUNTEER FIRE & FIRST RESPONDER ORGANIZATION**

6

6

### “HOW DID Y’ALL GET INTO THIS ?”

- 2010 - NEAREST INPATIENT MEDICAL FACILITIES > 20 MILES
- 2013 – CLINIC, 2015 – HOSPITAL ~ 5 MILES
- “WHAT CAN WE DO TO IMPROVE MEDICAL CARE & RESPONSE TIMES FOR THE COMMUNITY?”
- FRO CONCEPT PRESENTED IN MID-2011, APPLICATION MADE 12/2013
- CERTIFIED & REGISTRATION AWARDED IN JANUARY OF 2014



**ROUND MOUNTAIN VOLUNTEER FIRE & FIRST RESPONDER ORGANIZATION**

7

7

### WHAT IS INVOLVED ?

- INITIAL REGISTRATION APPLICATION  
ORGANIZATION, MEDICAL DIRECTOR, TAX ID, CORPORATE STATUS, LEVEL OF SERVICE, FEE (\$0 IF ALL VOLUNTEER)
- PERSONNEL / CREDENTIALS INFORMATION
- ADMINISTRATOR INFORMATION
- MEDICAL DIRECTOR INFORMATION
- TRANSPORTING PROVIDER SERVICE AGREEMENT
- AFFILIATION WITH EMS PROVIDER & MEDICAL DIRECTOR



**ROUND MOUNTAIN VOLUNTEER FIRE & FIRST RESPONDER ORGANIZATION**

8

8

## FRO - EMS PROVIDER AGREEMENT (TX DSHS REQUIREMENTS)

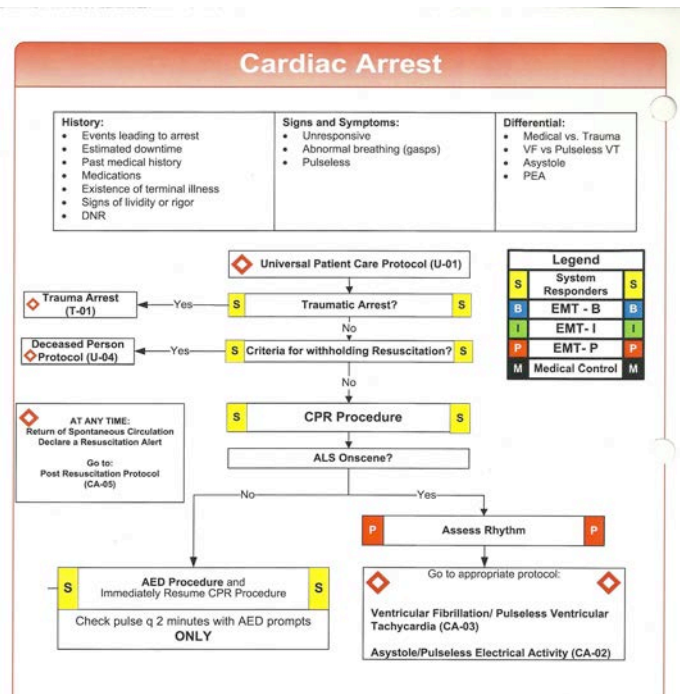
- EXECUTED WITH TRANSPORTING EMS AGENCY
- CONCURRENCE OF MEDICAL DIRECTOR
- DESCRIBES ORGANIZATION
- COMMITS TO TRAINING & CREDENTIALING
- ADHERENCE TO MEDICAL DIRECTOR PROTOCOLS
  - DELEGATED AUTHORITY MODEL



**ROUND MOUNTAIN VOLUNTEER FIRE & FIRST RESPONDER ORGANIZATION**

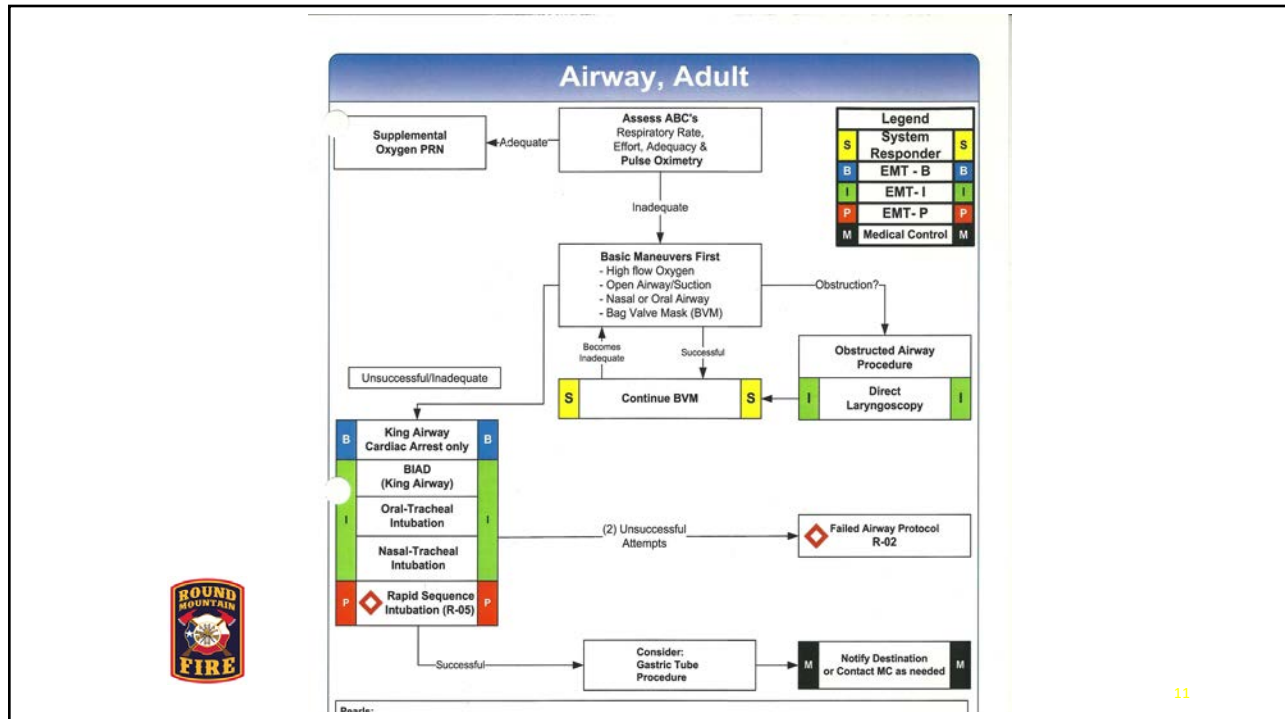
9

9



10

10



11

**EMS PROVIDER AGREEMENT  
(TX DSHS REQUIREMENTS)**

- DESCRIBES SERVICE HOURS, DISPATCHING PROCEDURES, REPORTING
- DEFINES LIMITS, E.G., ASSESSMENT AND LEVEL OF CARE, CHAIN OF COMMAND, DEFERENCE TO HIGHEST LEVEL PROVIDER ON SCENE
- HIPAA REQUIREMENTS – ESPECIALLY IMPORTANT IN RURAL SETTING

-- ALL OUTLINED BY DSHS – FOLLOW THEIR GUIDE --

**ROUND MOUNTAIN VOLUNTEER FIRE & FIRST RESPONDER ORGANIZATION**

**ROUND MOUNTAIN FIRE**

12

12

## SUCCESS FACTORS

### FRO STAFF MUST:

- DEVELOP AND MAINTAIN POSITIVE RELATIONSHIPS WITH EMS LEADERSHIP AND LINE PERSONNEL - CRITICAL FACTOR
- FOLLOW PROTOCOLS
- KNOW THEIR LIMITATIONS
- LEARN AT EVERY OPPORTUNITY
- DEMONSTRATE SKILLS



**ROUND MOUNTAIN VOLUNTEER FIRE & FIRST RESPONDER ORGANIZATION**

13

13

## FINANCIAL

- INITIAL INVESTMENT – ~ \$1,000 (4 MED BAGS); 2 AEDs @ ~ \$1,750
- BASIC FIRST AID SUPPLIES, OXYGEN, BP, O<sub>2</sub> SAT MONITOR
- CAN BE EXPANDED AS NEED INCREASES OR CREDENTIALS ADVANCE
- CONTINUING EDUCATION; MANY CLASSES AT NO OR LOW COST SPONSORED BY LOCAL OR REGIONAL EMS AGENCIES
- EXPENDABLES REPLACED BY TRANSPORTING EMS IN THE FIELD (NO REVOLVING COST)
- FRO EXPENSE SHOULD BE TRACKED SEPARATELY FROM FIRE



**ROUND MOUNTAIN VOLUNTEER FIRE & FIRST RESPONDER ORGANIZATION**

14

14

**DOWNSIDE**

- INCREASED CALL VOLUME → VOLUNTEER BURNOUT
- CONTINUING EDUCATION REQUIREMENTS
- POSSIBLE JOB RELATED INJURY, EXPOSURE
- NOT EVERYONE CUT OUT FOR MEDICAL (TRAUMA) CALLS
  - STILL A NEED – LIFT ASSISTS, EQUIPMENT RUNNERS, LZs, ETC.



**ROUND MOUNTAIN VOLUNTEER FIRE & FIRST RESPONDER ORGANIZATION**

15

15

**Blanco County EMS Dispatching Protocol**

Fire District	Fire & Fire	EMS Only	EMS & Fire
Priority 2 Medical	EMS Only	EMS Only	EMS Only
Traffic Accident	EMS Only	EMS Only	EMS Only
Rescue	EMS & Fire	EMS & Fire	EMS & Fire

**Normal Operations (Primary Unit Available)**  
 Dispatch first-due EMS unit based on call district (Blanco or Johnson City). Simultaneously dispatch Fire Department with EMS for Priority 1 Medical Aid in Blanco or Round Mountain ONLY.

**Calls In Blanco EMS District – Blanco EMS Primary Unit Unavailable**

- If Blanco Secondary Unit available (logged on), dispatch Blanco EMS Secondary Unit. No further action needed.
- If no Blanco Units available and Johnson City Primary unit available, dispatch JC EMS and Blanco Fire.
- If Blanco and Johnson City are both unavailable, page EMS-ALL and request any available EMS Personnel for 3<sup>rd</sup> out.
- Please also notify EMS Supervisor (888-456-9740) unless they are already aware of pending call.

If none of the above resources are available (EMS Level 0), notify EMS Supervisor on-call (888-456-9740) and refer the call for service to the closest mutual aid partner:

- Primary Mutual Aid: Buherde Spring Branch EMS (Comal County Dispatch)
- RR 165 North of RR 2325: San Marcos/Hays County EMS (Hays County Dispatch)
- RR 2325: Wimberley EMS (Hays County Dispatch)

**Calls In Johnson City EMS District – JC EMS Primary Unit Unavailable**

- If JC Secondary Unit available (logged on), dispatch JC EMS Secondary Unit. No further action needed.
- If no JC Units available and Blanco Primary unit available, dispatch Blanco EMS.
- If Johnson City and Blanco are both unavailable, page EMS-ALL and request any available EMS Personnel for 3<sup>rd</sup> Out.
- Please also notify EMS Supervisor (888-456-9740) unless they are already aware of pending call.

If none of the above resources are available (EMS Level 0), notify EMS Supervisor on-call (888-456-9740) and refer the call for service to the closest mutual aid partner:

- Primary Mutual Aid: Marble Falls Area EMS (Marble Falls PD Dispatch)
- Far East: San Marcos/Hays County EMS (Hays County Dispatch)
- Far West: Fredericksburg EMS (Gillespie County Dispatch)

**EMS Level 0 Procedures**

- Notify EMS Supervisor on-call (888-456-9740) and notify Marble Falls Area EMS (Marble Falls PD Dispatch).

*Revised 12/07/2017*

**MOST RECENT 12 MONTH DISPATCHES (NIC MOTOR VEHICLE ACCIDENTS)**

CARDIAC / CHEST PAIN	5
RESPIRATORY PROBLEM	3
FALL W/INJURY	3
DIABETIC SHOCK	1
SEIZURE	1
STROKE	2
TRAUMATIC INJURY	1



**ROUND MOUNTAIN VOLUNTEER FIRE & FIRST RESPONDER ORGANIZATION**

16

16



Motor Vehicle Accidents, RMVFD FRO District

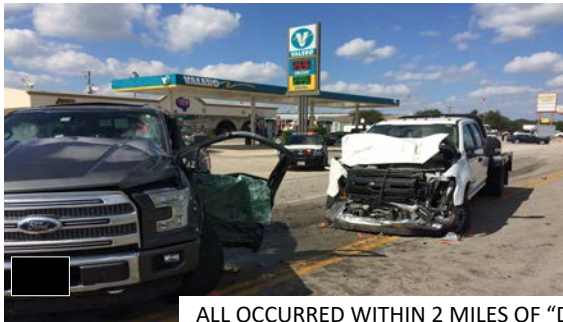
(State Hwys)	Total	w/o Injury	w/Injury	Fatalities
2015	8	2	6	0
2016	14	11	3	0
2017	5	2	3	2 (40%)
2018	16	10	6	2 (12%)
(All Rds)				
2019	30	20	10	4 (9/1 -12/1/19)



**ROUND MOUNTAIN VOLUNTEER FIRE & FIRST RESPONDER ORGANIZATION**

17

17



ALL OCCURRED WITHIN 2 MILES OF "DOWNTOWN" ROUND MOUNTAIN  
(ALL INCLUDED FATALITIES)

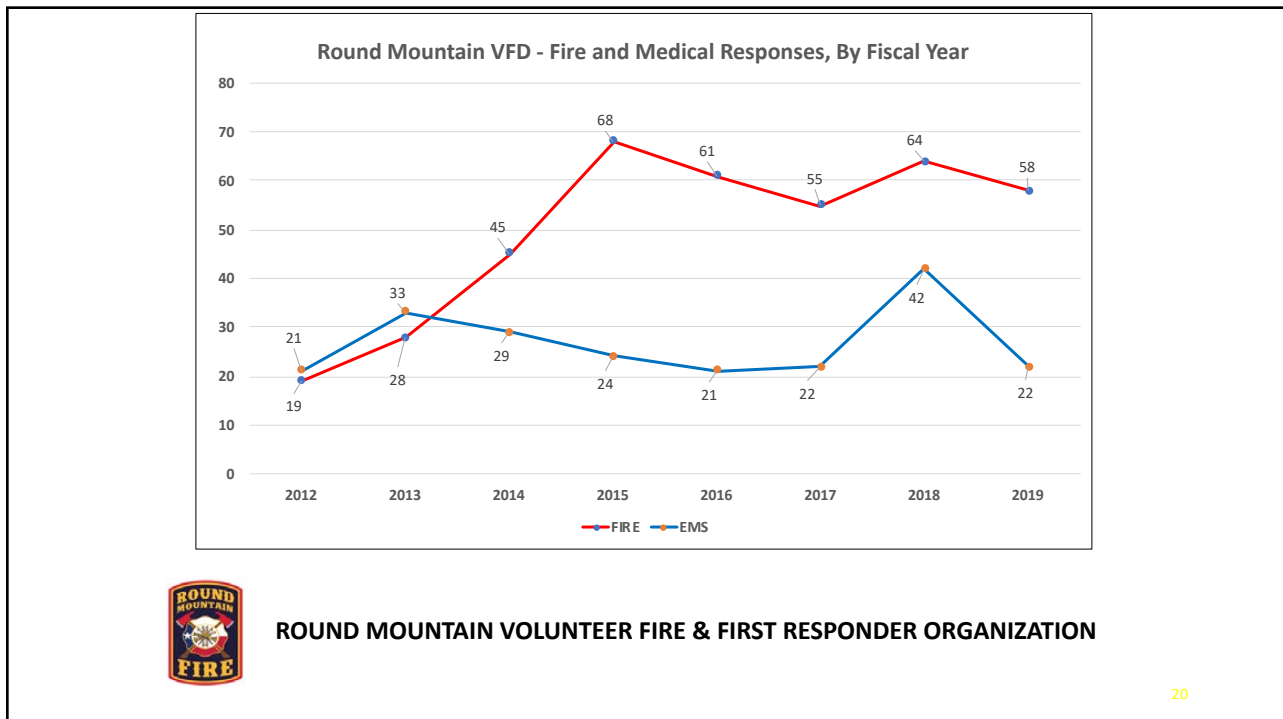


18

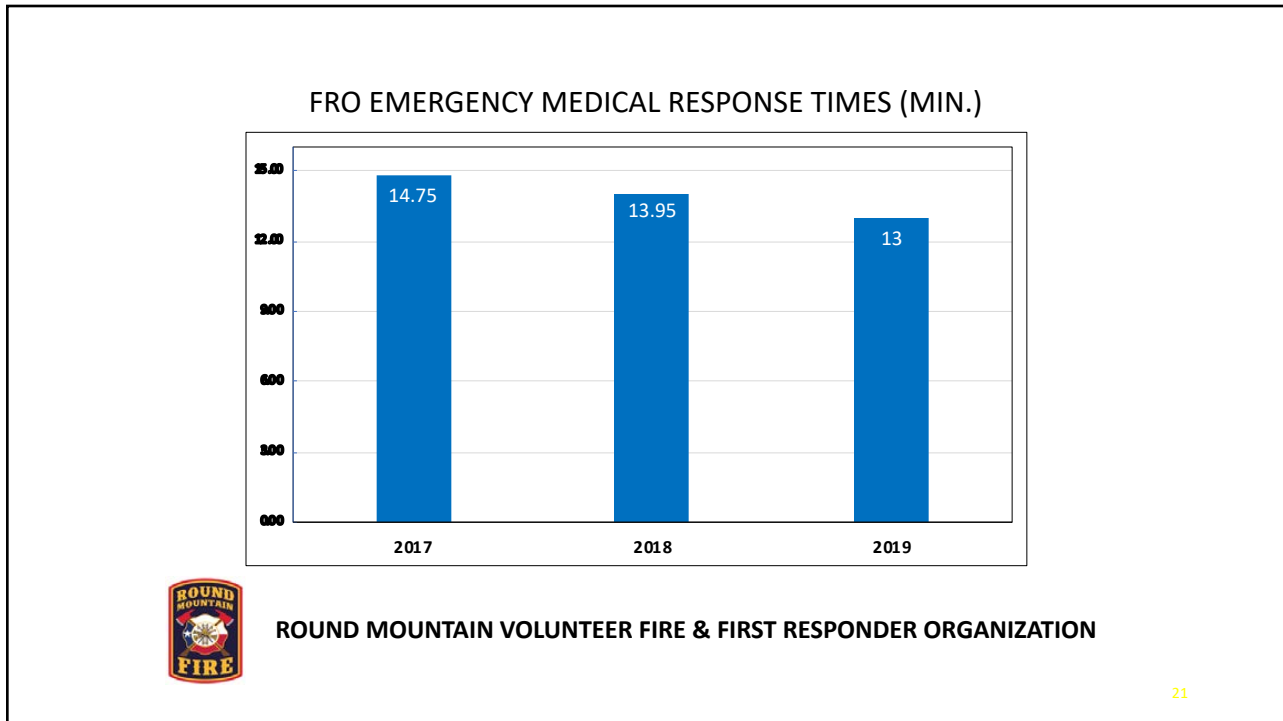
18




19



20



21

- WHY ?**
- ADDITIONAL COMMUNITY SERVICE
  - OUTREACH / PUBLIC EDUCATION
  - MINIMAL INVESTMENT OR INCREMENTAL COST
  - SCALABLE – SERVICES DEPENDENT ON LEVEL OF CAPABILITY
  - GREATER RETURN ON TAXES LEVIED BY ESD
  - VOLUNTEER ENRICHMENT, RECRUITMENT AND RETENTION
- &**
- IMPROVEMENT IN PUBLIC SERVICE – ESSENCE OF THE ESD**
- ROUND MOUNTAIN VOLUNTEER FIRE & FIRST RESPONDER ORGANIZATION**
- 
- 22

22

SUPPORT = SUCCESS

SUPPORT FROM NORTH BLANCO COUNTY ESD #1 HAS BEEN EXCELLENT

SUPPORT FROM NORTH BLANCO COUNTY EMS IS BEYOND EXPECTATION

SUPPORT FROM THE COMMUNITY (\$\$) HAS BEEN OVERWHELMING



**ROUND MOUNTAIN VOLUNTEER FIRE & FIRST RESPONDER ORGANIZATION**

23

23



**ROUND MOUNTAIN VOLUNTEER FIRE & FIRST RESPONDER ORGANIZATION**

24

24

THANK YOU

QUESTIONS ?

[mmegna@co.blanco.tx.us](mailto:mmegna@co.blanco.tx.us)



**ROUND MOUNTAIN VOLUNTEER FIRE & FIRST RESPONDER ORGANIZATION**

25