

*Welcome to*

# PRICE COUNTY

WISCONSIN

Find the Perfect Price County Lake

Explore Price County's Trails



**ENJOY** | **PRICE**  
**COUNTY**

NO PAVEMENT. NO PROBLEM.





# NORTHWOODS REALTY

WE SELL DREAMS

Welcome to the area, we're glad you're here!  
NORTHWOODSWI.COM ♦ 715-339-HOME



UP NORTH VACATION LODGING  
STAY IN THE NORTHWOODS

**THE LARGEST LOCAL LODGING MARKETPLACE**

[UpNorthLodging.com](http://UpNorthLodging.com)





# Welcome to Price County!

Wishing for woods and water?

Searching for the sound of silence?

Or maybe you love the hum of a snowmobile or ATV.

With nearly 2,000 miles of trails and 18,000 acres of water, we've got trails and more to explore.

Take a break at a great local bar or restaurant, peruse our unique shops, or kick back at your "home away from home."

Get ready to choose your own adventure when you visit Price County!

We saved a place for you!

Cover photo credit: Janice Favret



Photo credit: C. Johnson

Photo credit: M. Clapero



Photo credit: J. Spacek

FEATURED PRICE COUNTY EVENTS..... 4

2025 EVENTS..... 5-6

## EXPLORE

Park Falls, Phillips ..... 7

Prentice, Ogema, Brantwood ..... 8

Fifield, Lugerville, Kennan and Catawba Area ..... 9

ACTIVITIES..... 10-11

ATTRACTIONS..... 12-13

PARKS ..... 14

CAMPING..... 15

FORESTS • NATURAL AREAS • WILDLIFE ..... 16-17

FISHING & HUNTING ..... 18

Find the Perfect Price County Lake ..... 19

TRAILS ..... 20-28

PRICE COUNTY MAP ..... 24-25

SHOPPING..... 29

FOOD & DRINK ..... 30-32

LODGING ..... 33-35

SERVICES..... 36-38

WORSHIP..... 39

CHAMBER MEMBER DIRECTORY..... 40-46

## NEED MORE INFORMATION?

**Park Falls Area Chamber of Commerce**  
715-762-2703 • [www.ParkFalls.com](http://www.ParkFalls.com)

**Phillips Area Chamber of Commerce**  
715-339-4100 • [www.PhillipsWisconsin.net](http://www.PhillipsWisconsin.net)



Photo credit: T. Knox

**PRICE  
COUNTY**

# 2025 EVENTS

<b>JUNE 14</b>	<b>LUMBERMANS DAY</b> CATAWBA
<b>JUNE 21</b>	<b>CZECH-SLOVAK FESTIVAL</b> PHILLIPS
<b>JUNE 27-28</b>	<b>TRUCK TRACTOR PULL</b> KENNAN
<b>JULY 4-5</b>	<b>4TH OF JULY CELEBRATION</b> PHILLIPS
<b>AUGUST 1-3</b>	<b>FLAMBEAU RAMA</b> PARK FALLS
<b>AUGUST 16</b>	<b>PHILLIPS ON TAP</b> PHILLIPS
<b>AUGUST 21-23</b>	<b>PRICE COUNTY FAIR</b> PHILLIPS
<b>AUGUST 30</b>	<b>PROGRESS DAYS</b> PRENTICE
<b>AUGUST 30</b>	<b>TOUR DE FLAMBEAU</b> PARK FALLS
<b>SEPTEMBER 27</b>	<b>CHRISTMAS TREE FESTIVAL</b> OGEMA
<b>OCTOBER 4</b>	<b>FALL HARVEST FESTIVAL</b> PHILLIPS
<b>OCTOBER 25</b>	<b>FRIGHT FEST</b> PARK FALLS

**ENJOY PRICE  
COUNTY**

715.339.4100  
PHILLIPS, WI

[WWW.PHILLIPSWISCONSIN.NET](http://WWW.PHILLIPSWISCONSIN.NET)

715.762.2703

PARK FALLS, WI

[WWW.PARKFALLS.COM](http://WWW.PARKFALLS.COM)



# 2025 EVENTS

## ONGOING EVENTS

**Park Falls Farmers Market:**  
Park Falls

**Wednesday Night Live:** Park Falls

**American Legion Card Draw:**  
Park Falls

**Peaceful Gatherings Dinner:**  
Park Falls

**Old Town Hall and Greenfield  
School Museums Open:** Fifield

**Public Library Children's  
Summer Program:** Park Falls

**Public Library Children's Summer  
Program and other programs for  
all ages:** Phillips

**Music in the Park at  
Elk Lake Park:** Phillips

**Moose Lodge Bingo:** Phillips

**Wisconsin Concrete Park Art  
Workshops & More:** Phillips

**Movie In The Park Sponsored by  
Victory Christian Center June to  
August:** Phillips

**Ranch Tours & Horse Riding:**  
Phillips

**Southern Price County  
Farmers Market:** Catawba



## JANUARY

**Butternut/Schnur Lake Association  
Fisheree:** Butternut

**Lena's Northern Pines Fisheree:**  
Butternut

**WinterFest—Phillips:** Phillips

## FEBRUARY

**Turtle Flambeau Flowage Ice Fishing  
Jamboree:** Butternut

**Letters from Home—USO Style Show:**  
Park Falls

**Winter Wonderland Snowshoe 5k:**  
Park Falls

**Ice Fishing Tournament on Soo Lake:**  
Phillips

**Elk River Pioneers Breakfast Buffet:**  
Phillips

**Snowmobile Picnic at Russo's Hill:**  
Phillips

**Ice Fishing Jamboree:** Spirit

**Wild Game Feed & Sportsmen's Expo:**  
Ogema

## MARCH

**Price Ice Figure Skating Show:**  
Park Falls

**Chequamegon School Musical:**  
Park Falls

**St. Urho/St. Patrick's Day Celebration:**  
Brantwood

**Driftsplitters Club Brat Feed & Raffle:**  
Catawba

**Fireman's Feed and Cornhole  
Tournament:** Fifield

**Winter Golf Classic @ Westwood:** Phillips

## APRIL

**Street Corner Symphony:** Park Falls  
**Bareroot Sale Season Opener:** Winter

**Panty Party:** Phillips

**Northwoods Players Spring Musical:**  
Phillips

**Walleyes for Tomorrow Banquet:** Phillips

**Spirit Legion Pancake Supper:** Spirit

**Community Ecumenical Choir:** Ogema

## MAY

**Mother's Day Sale Lola's Food Truck:**  
Winter

**Memorial Day Weekend Special Event—  
Lola's Food Truck:** Winter

**Woodtick Races:** Oxbo

**Band "Pops" Concert:** Park Falls

**Baroka's Spring Open House:** Fifield

**Spring ATV/UTV Ride:** Butternut

**Spirit Historical Society Barn Dance:**  
Spirit

**Pike Lake Walleye Festival:** Fifield

**POPS Garage Sale:** Prentice

## JUNE

**Father's Day Sale:** Winter

**3rd Annual Amber Lake Open Disc  
Golf Tournament:** Park Falls

**St. Croix Rods Customer Appreciation  
Day:** Park Falls

**Pie Social:** Fifield

**Lumbermans Day:** Catawba

**Czech-Slovak Community Festival:**  
Phillips

**Girls' Night Out:** Phillips

**Masonic Lodge Golf Outing Scholarship:**  
Phillips

**Kennan Fire Dept. Truck & Tractor Pull:**  
Kennan

**Praise in the Park at Elk Lake Park:**  
Phillips

## JULY

**4th of July Celebration:** Park Falls

**Pioneer Days Festival:** Butternut

**Fifield Community Picnic:** Fifield

**Phillips 4th of July Celebration:** Phillips

**Art and More on the Lakeshore:** Phillips

**Price County Rodeo:** Phillips

**Antique Tractor Expo & Car Show:**  
Phillips



Photo credit: C. Palzkill





Photo credit: B. Endreas

## AUGUST

**Turtle Flambeau Flowage Pig & Corn Roast:** Butternut  
**Flambeau Rama 3 days of live music, Northwoods Classic Car Show, Arts & Craft Fair, Evergreen 5K Road Run, Parade:** Park Falls  
**Tour De Flambeau on-road bike race and time trail:** Park Falls  
**Scentsational Summer Sale:** Winter  
**Autumn Splendor Sale:** Winter  
**Butternut Community Fair:** Butternut  
**Price County Historical Society Strawberry Shortcake Fundraiser:** Fifield  
**Phillips Area Charity Classic Musky Tournament:** Phillips  
**Phillips on Tap:** Phillips  
**Price County Fair:** Phillips  
**Prentice Progress Days:** Prentice  
**Pike Lake Fun Day:** Fifield  
**Spirit-Hill-Ogema 4-H Fair:** Spirit  
**Kids Panfishing Day:** Spirit  
**Spirit Historical Society Open House:** Spirit

## SEPTEMBER

**A Country Afternoon:** Brantwood  
**Ogema Christmas Tree Festival:** Ogema  
**Northwoods Hi-Riders Fall Golf Classic:** Phillips  
**Horse Pull & Beef Cookout:** Ogema

## OCTOBER

**Fright Fest trunk or treat, games, scavenger hunt, giant pumpkin drop, free movie:** Park Falls  
**Lenapalooza ATV/UTV Ride:** Butternut  
**Lena's Halloween Bash:** Butternut  
**Flambeau River Chapter Ruffed Grouse Society Banquet:** Fifield  
**Civic Media 98Q Radio Charity Auction:** Park Falls  
**POPS Garage Sale:** Prentice  
**Phillips Fall Harvest Fest:** Phillips  
**Family Fall Festival Sponsored by Victory Christian Center:** Phillips  
**Harvest Festival Dinner:** Brantwood  
**Fall Hayride & Campfire:** Phillips



## NOVEMBER

**Turkey Trot 5K Fun Walk/Run:** Park Falls  
**Shop Local Holiday Kick Off! Small Business Saturday:** Park Falls  
**Deck the Halls Parade, Tree Lighting, & More!:** Park Falls  
**Veteran's Day Celebration:** Park Falls  
**Veteran's Steak Dinner:** Park Falls  
**Baroka's Winter Open House:** Fifield  
**Northwoods Players Fall Play:** Phillips  
**Prentice School Musical:** Prentice  
**Cabin Creations Holiday Open House:** Phillips  
**Homespun Christmas Open House:** Phillips  
**The 5 Senses Kitchen Extravaganza:** Phillips  
**Holiday Crafts & Treasures Sale:** Phillips  
**Shop Small Business Days:** Phillips  
**Community Ecumenical Choir:** Ogema

## DECEMBER

**Chequamegon High School Madrigal Dinner:** Park Falls  
**Northwoods Players Madrigal Dinner:** Phillips  
**Phillips Christmas Parade:** Phillips  
**Live Nativity Palmquist Farm:** Brantwood  
**Shop Small Business Days:** Phillips  
**Spirit Legion Community Christmas Program:** Spirit

# The 40th Annual Phillips Czech-Slovak Festival



## June 20-21, 2025

**June 20th Lidice Memorial service at 7pm**

**June 21st Festival 10am-8pm**

**Miss Czech Slovak WI State Pageant 25th Anniversary**

**Live Music, Dancing, Ethnic Food, Beer Garden with Czech beer & regional wine**

[www.czech-slovak-festival.com](http://www.czech-slovak-festival.com)







# EXPLORE



Photo credit: S. Herman

## Park Falls

### THE GROUSE CAPITAL OF THE WORLD

Park Falls has a small town feel with BIG time fun. “Old Abe”, the Veterans Memorial Eagle on Division Street, welcomes you to the business district where shops and restaurants abound.

Park Falls is also the Tuscobia Trail Head and connects with hundreds of miles of excellent ATV and snowmobile riding.

Paddle the Flambeau River as it winds through the area, camp at Smith Lake County Park, or take a short drive to Smith Rapids Covered Bridge and the Round Lake Logging Dam.

Park Falls also hosts Flambeau Rama—the largest festival in Price County—in early August, offering several days of great music, rides, races, and much more!

The Park Falls area offers welcoming resorts, great golfing, and beautiful lakes—everything you need to make your vacation unforgettable!

## Phillips

### THE PRICE COUNTY SEAT

Phillips offers a wide range of activities for visitors. Located on the Phillips Chain of Lakes, the area also offers more than 20 local lakes providing excellent fishing and unlimited recreation.

Visit the Lidice Monument, a tribute to the strong Czech/Slovak heritage of the area, or take time to walk through Wisconsin’s Concrete Park. Kids will love Elk Lake Park with playgrounds and a Splash Pad!

Beautiful Solberg Lake County Park is nearby, and numerous resorts and restaurants are ready to welcome you throughout the area. Well maintained snowmobile, ATV, and snowshoe trails are ready for your outdoor adventures.

Phillips also offers great sport shops, specialty boutiques, and more. Our friendly business owners offer their assistance as you search for that gift or keepsake of your perfect vacation.

### NEED MORE INFORMATION?

**Park Falls Area Chamber of Commerce**  
715-762-2703 • [www.ParkFalls.com](http://www.ParkFalls.com)

**Phillips Area Chamber of Commerce**  
715-339-4100 • [www.PhillipsWisconsin.net](http://www.PhillipsWisconsin.net)







# EXPLORE

## Prentice

### THERE'S LOTS TO SEE AND DO IN THE VILLAGE OF PRENTICE!

You won't want to miss a visit to the VFW's Memorial T-33 Fighter Plane on Railroad Avenue or the Prentice History Walk. Prentice is also home to the Prentice Co-op Creamery (listed on the National Register of Historical Places).

Looking for outdoor fun? Play a round of golf at Prentice Pines! Or take trip down the winding, scenic Jump River is a favorite with canoe and kayak paddlers.



Photo credit: J. Favret



Photo credit: J. Favret

## Ogema

### THE CHARMING VILLAGE OF OGEMA IS A MUST VISIT!

As you wind your way through the village, you'll see why Ogema and its surrounding area are home to both a landmark and a unique festival.

Price County is proud to be the home of the Timm's Hill Trail, just a short drive from Ogema. Bike, hike, ski or snowshoe the ten mile, non-motorized Timm's Hill Trail connecting the Ice Age National Scenic Trail to Timm's Hill. At an elevation of 1951.5 feet above sea level, Timm's Hill is the highest natural point in Wisconsin. Once at the top, climb the 60 foot observation tower for a spectacular 30 mile view of the Northwoods – or look down to Bass Lake 160 feet below.

Ogema is also well-known for its annual Christmas Tree Festival in late September. This festival, which has taken place since 1960, includes a Christmas Tree contest, tree toss contest, parade, chicken barbecue, tours of Pioneer House Museum and the Annual Fireman's Dance.

## Brantwood

### VISIT HISTORY IN BRANTWOOD IN EASTERN PRICE COUNTY.

Relive the Finnish heritage of the Brantwood area at the Knox Creek Heritage Center, a recreation of life during the years of this Finnish settlement. Nearby Knox House, a log home built in 1898, and the Finnish Immigrant Monument offer more glimpses into Brantwood's early communities. Take time to enjoy a drive through the area's beauty with its rolling hills, huge pines and abundant wildlife.

The Brantwood area is another popular destination for snowmobilers and ATV riders. Trails are well maintained and offer riders a great experience – and watch out for deer, bald eagles and other forest creatures!



## *Fifield*

LOCATED BETWEEN PHILLIPS AND PARK FALLS, YOU'LL WANT TO VISIT THIS PICTURESQUE COMMUNITY!

Fifield was founded in 1876, where the Wisconsin Central Railroad crossed the south fork of the Flambeau River in the big northern forest. Logging boomed and the population grew. A town hall was built in 1882, but burned in the fire of 1893, along with Fifield's whole business district of 60 buildings.

In 1966 a new town hall was built and the old hall was considered for demolition, but instead it was restored and now serves as the Price County Historical Society Museum, operated by the historical society of Price County, Wisconsin.

Round Lake Logging Dam was constructed during the lumber boom of the 1800s. The dam would open during the spring and logs were transported down the river. In 1992, the dam underwent renovation with assistance from multiple sources, including the Chequamegon-Nicolet National Forest and the historical society of Price County, Wisconsin.

Be sure to visit the Memorial Grove Hemlocks located in the old growth Hemlock and Natural Area.

## *Lugerville*

JUST A FEW MILES WEST OF PHILLIPS, A DRIVE TO LUGERVILLE OFFERS SOME SPECTACULAR SCENERY.

Lugerville was once a bustling logging village. Nowadays it is a quiet, picturesque village in an area well-known for winding roads that offer a unique experience for bicyclists, motorcycle enthusiasts and hikers.

The area is a popular destination for snowmobile and ATV riding, with its rolling hills and opportunities for canoeing, kayaking and fishing on the nearby Flambeau River.

## *Kennan and Catawba Area*

The scenic Kennan and Catawba area in the southwestern corner of Price County features the Jump River, winding through Big Falls County Park and the surrounding countryside. The park features a campground, hiking trails along the rapids, and great fishing. Visit the Jump River Historical Museum which tells the story of Price County from its origin in 1870. Celebrate Lumberman's Day in Catawba the second weekend in June and check out the big truck and tractor pull and 4th of July celebration the last weekend in June.

The area is also another popular destination for snowmobile and ATV riders, with friendly businesses and restaurants located throughout the area.





# ACTIVITIES

## ENJOY PRICE COUNTY

**NO PAVEMENT. NO PROBLEM.**

### ATV, UTV & OFF-ROAD MOTORCYCLE RIDING

Price County has over 200 miles of motorized trail and connector routes. Most trails have access to food, lodging and services. (See map on pages 20-21)

- The Flambeau Trail System consists of 70 miles of developed trails winding through the Chequamegon-Nicolet National Forest. Rich with natural and human history, the trails are open to ATV, UTV (up to 65" in width) & ORM use May 1–March 14.
- The Flambeau River State Forest Trail is a 38 mile trail using existing forest roads, snowmobile trails and town roads. This trail connects with the Tuscobia State Trail and the Dead Horse Run Trail to create nearly 160 miles of continuous trail. Open to ATV & UTV use May 15–November 15.
- The Georgetown Trail is 15.8 miles long including trail riding and road routes. The trail surface is gravel and meanders through a variety of forest types. Open to ATV, UTV & ORM use May 15 – March 14.
- The Tuscobia State Trail is an abandoned railroad grade that allows ATV & UTV use on a 64 mile section. The City of Park Falls, the eastern trailhead, allows riding on designated streets for access to dining, lodging, and services. Open to ATV & UTV use on the Price County section April 16 – November 14.
- The Solberg Trail is located northeast of Phillips on the Price County Forest and the Chequamegon-Nicolet National Forest. The trail is a total of 9.5 miles long including trail riding and road routes and connects to the Flambeau Trail System at Sailor Lake Campground. The trail has a graveled surface, crosses numerous wooden boardwalks and meanders through a variety of different forest types. Open to ATV, UTV (up to 65" in width) & ORM use May 1–March 14.
- The Pine Line Rail Trail is a 26 mile rail-trail with beautiful stands of pine and numerous cedar swamps. Open to ATV & UTV (Price County portion only) use mid-December–March 31 when trails are open to snowmobiles and temperatures are 28° or colder.

### SNOWMOBILING

With 500 miles of meticulously groomed trails and breathtaking scenery, Price County offers many unique ways to enjoy your snowmobile adventure! The well marked trails are among the best in the nation and offer great lodging and eateries along the way. Nine clubs work diligently to develop, maintain and groom the trails. They invite you to become a member and to join them on their rides and at their fundraisers held throughout the year. Snowmobiling is a fun and exciting recreational pursuit for families and friends of all ages. (See map on page 23)

- Trails through the 800,000 acre Chequamegon-Nicolet National Forest
- Pine Line Rail Trail from Prentice to Medford, including a side trip to Timm’s Hill, Wisconsin’s highest point
- Tuscobia State Trail from Park Falls to Rice Lake
- Numerous connecting trails with quality dining, lodging and services makes Price County the perfect snowmobiling destination!

### CANOEING & KAYAKING

The North and South Forks of the Flambeau River offer peaceful meandering sections for the novice and rapid whitewater areas for the expert paddler. Local outfitters and guides are available to provide equipment and shuttle service for your paddling adventures. Designated campsites and picnic areas are located along the river. For detailed maps visit [www.paddleflambeau.com](http://www.paddleflambeau.com).

### BIKING

Plan to bring a touring or mountain bike along on your trip and experience the hundreds of miles of scenic on road routes and off-road trails available to bikers, including many miles of trail exclusively for non-motorized use. Biking through Price County will take you on a variety of routes through rolling terrain, ranging from upland ridges to lowland marshes. Connect to the Ice Age National Scenic Trail from Timm’s Hill County Park or wind through the Chequamegon-Nicolet National Forest.

### HIKING

Experience the solitude of Price County through the many miles of hiking trails offered. The numerous trails and wildlife areas offer opportunities for a short hike or a chance to enjoy lengthier backpacking trips.

### EQUESTRIAN

Price County offers many opportunities for the horseback riding enthusiast. There are several trails to choose from with a variety of settings and opportunities for either a short ride or lengthier trip with an overnight stop. Most of these trails are multiple use trails while others are strictly non-motorized.





Photo credit: T. Stich

## CROSS-COUNTRY SKIING, FAT BIKING, SNOWSHOEING & SKIJORING

Price County has eight groomed cross-country ski trails offering 73 miles (113 km) of trail for your enjoyment. Trails vary in difficulty with something for every type of skier. Some trails can be used to explore the region upon fat bike, snowshoe or while skijoring. However, only cross-country skiers are allowed on the groomed/tracked portions of the trails. Snowshoeing is also available on hiking trails or wildlife areas in the thousands of acres of national, state and county forests. Along the trails you will find a variety of beautiful scenery and wildlife to enhance your experience. Cross-country ski, snowshoe and fat bike rentals and guide services are available.

The following trails are among the best in the Northwoods: Wintergreen Trail, 7.15 miles; Holy Cross Trail, 6 miles; Solberg Lake/Squaw Creek Trail, 3.4 miles; Phillips School Forest Trail, 3.5 miles; High Point Trail, 9 miles; Timm's Hill Trail, 10 miles; Flambeau Hills Trail, 16.9 miles; Palmquist Farm Trail, 23 miles, and Newman Springs Trail, 7 miles (not groomed); Round Lake Trail, 9.3 miles (not groomed). (See maps on pages 26-27)

## AUTO, MOTORCYCLE & BICYCLE TOURS

In mid-September, Price County's forests come alive with brilliant colors during the onset of fall. Whether you prefer to travel by auto, motorcycle or bicycle, our extensive network of lightly traveled roads offers a truly unforgettable experience. Remember to bring your camera as you will delight in the scenic beauty created by the reds, yellows, oranges and golds of the leaves. A popular autumn on road tour is the Rustic Road #62 Tour. It starts at Pioneer Park in downtown Ogema, follows country roads through rolling hills, and then meets Rustic Road #62, which takes you to Timm's Hill County Park, Wisconsin's highest geographical point. Contact us for additional suggested auto tour routes.

## SWIMMING

PARK FALLS COMMUNITY POOL (outdoor)  
5th Street North, Park Falls • 715-762-2436

CHEQUAMEGON SCHOOL POOL (indoor)  
400 N. 9th Street, Park Falls • 715-762-2474

PHILLIPS COMMUNITY POOL (indoor)  
990 Flambeau Ave./Hwy. W, Phillips • 715-339-2143

NORTHERN LIGHTS INN (indoor)  
1127 4th Avenue, South, Park Falls • 715-762-2406

SWIMMING AREAS & BEACHES (outdoor)  
See parks directory listings on page 14.

## TENNIS

PARK FALLS • 5th Street North, adjacent to Community Pool

PHILLIPS • County Road W, 990 Flambeau Avenue

KENNAN • Division Street, behind Municipal Building

## GOLFING

PARK FALLS COUNTRY CLUB • 715-762-4396  
1250 Saunders Ave., Park Falls, WI 54552

WESTWOOD GOLF COURSE • 715 339-3600  
N8785 Golf Course Road, Phillips, WI 54555

PRENTICE PINES GOLF COURSE • 715-428-2127  
403 Center Street, Prentice, WI 54556

## DAY TRIPS

Copper Peak • From the peak you can see Lake Superior and three states: Wisconsin, Minnesota and Michigan

Minocqua-Woodruff-Arbor Vitae • Tourist attractions

Hayward • Tourist attractions

Apostle Islands National Lakeshore • Scenic views of Lake Superior, the largest body of fresh water in the world

Madeline Island • Take a ferry boat from the mainland to the largest of the Apostle Islands

Copper Falls State Park • Hike and cross-country ski to view scenic canyons, streams and waterfalls

Turtle Flambeau Flowage • Wisconsin's Scenic Wilderness Waters Area

Morgan Falls & St. Peter's Dome • Scenic waterfall and the highest point in the Chequamegon-Nicolet National Forest

Little Falls/Slough Gundy • Rugged whitewater along the South Fork of the Flambeau River surrounded by a peaceful pine forest.

**NO PAVEMENT. NO PROBLEM.**



# ATTRACTIONS

## 1. VIETNAM VETERANS COMMEMORATIVE TRAIL

The trail is located in Price County with 13 markers at various parks & monuments to represent the 13 years of service and sacrifice of the brothers and sisters in arms. The markers denote events of the war that were deemed important by Vietnam Veterans. The trail is a commemorative project to remind the public of the sacrifices made by this group of unheralded veterans. Price County is a Vietnam War Commemorative Partner. Information: Price County Veteran's Service Office 715-339-2545.

## 2. ROUND LAKE LOGGING DAM

The last remaining structure of its kind in Wisconsin. Originally constructed in 1878, this wood dam was the site of spring log drives. The logs were sluiced through the dam on their long journey to sawmills along the Chippewa and Mississippi rivers. A four-year restoration and reconstruction project was completed in 1995 using the historic timbers and original iron hardware. Listed on the National Register of Historic Places. A National Forest parking pass is required. Directions: From Fifield travel east on Highway 70 for 18 miles to Forest Road 144. Turn north and travel 2.5 miles to Forest Road 535. N15296 Logging Dam Rd., Park Falls.

## 3. SMITH RAPIDS COVERED BRIDGE THE COVERED BRIDGE

The only glue-laminated Town Lattice covered bridge in Wisconsin. Constructed in 1991, the bridge uses an attractive diamond-shaped truss pattern called the Town Lattice. The bridge passes over the South Fork of the Flambeau River, a popular destination for canoe and kayak enthusiasts to paddle in the spring and early summer or when rain elevates the water level. There is a picnic area near the bridge. Directions: From Fifield travel 14 miles east on Highway 70 to Forest Road 148 then north 2 miles. N14900 Smith Rapids Rd., Park Falls.

## 4. FIFIELD FIRE TOWER

The Fire Tower was constructed in 1932, a time when wildfires raged across the "cutover" landscape of northern Wisconsin. It served as an observation point, staffed by lookouts, that was part of a broader fire detection and suppression system. It is one of two that is listed on the National Register of Historic Places. Interpretive panels tell the story of the Fifield Tower. The tower is a 250 yard hike from the Wintergreen Trailhead parking lot. The trailhead serves Chequamegon-Nicolet National Forest visitors year-round for both non-motorized

and motorized activities. A National Forest parking pass is required. Directions: Highway 70, 5 miles east of Fifield. W5630 State Hwy 70, Park Falls.

## 5. OLD TOWN HALL MUSEUM AND GREENFIELD SCHOOL

Town meetings and social gatherings were held here from 1894 until 1967. Listed on the National Register of Historic Places, it houses artifacts from 1879 to the 1930s. Exhibits include logging camp artifacts, railroad memorabilia, a Victorian period living room and kitchen, house hold and personal items and changing exhibits. A gift shop offers books about northern Wisconsin history and life. The Greenfield School is located on site and houses exhibits representing one room rural schools. The museum is open the first full weekend in June through Labor Day on Saturdays and Sundays from 11 a.m. to 3 p.m. Information: 715-339-2415 or 715-339-2481. Directions: W7213 Pine Street, Fifield.

## 6. LIDICE MONUMENT

The large settlement of Czech, Slovak and Moravian people living in Phillips wept for the village of Lidice, Czechoslovakia and her brave citizens who suffered and perished at the hands of the Nazis during World War II. The monument was completed and dedicated in 1944. A memorial service is held yearly the third weekend in June in conjunction with a celebration of history and culture during the Phillips Czech-Slovak Festival. Directions: 140 Fifield Street, Phillips.

## 7. WISCONSIN CONCRETE PARK

In 1950, at age 65, Price County native Fred Smith began construction of what we know today as the Wisconsin Concrete Park. Smith, a lumberjack, tavern owner, farmer, and dance hall musician, created over 200 figures depicting his vision of the local culture and the world. The collection of his work is considered one of America's most treasured displays of folk art. Smith built his figures on wooden frames wrapped with mink wire. He covered them with hand-mixed cement and decorated them with a variety of broken glass and found objects. He often accepted donations of glass objects for his creations.



Photo credit: A. Grzymnowicz

Shortly after Fred Smith's death in 1976, the Wisconsin Concrete Park was purchased by the Kohler Foundation and later gifted to Price County. The park is maintained by the Forestry & Parks Department with assistance from the Friends of Fred Smith, Inc., with restorative efforts continuing on a regular basis. Donations are welcome and greatly appreciated. The park is open year-round. Directions: N8236 Hwy 13 South, Phillips.



The Countryside Artists Gallery and Gifts, located in the historic Smith House, is open seasonally. Information: 715-339-6475.

The newly renovated Rock Garden, a lodging and restaurant/tavern facility, is located in the historic Rock Garden Tavern. Information: 715-339-7282.

## 8. PRENTICE HISTORY WALK

Take a stroll through the Village of Prentice and discover the fascinating history of this Northwoods community. You'll find historical markers throughout town commemorating important events in the history of Prentice. Learn about the logging industry, railroad history, important citizens and the area's earliest settlers. An interactive map can be found at [vil.prentice.wi.gov/historywalk/](http://vil.prentice.wi.gov/historywalk/). Directions: 935 Railroad Avenue and other locations in Prentice.

## 9. KNOX CREEK HERITAGE CENTER

Comprises eight buildings containing artifacts and documents representing several ethnic groups in southeastern Price County. Four ethnically-themed events are held each year. Open by appointment and during the June and September events. For more information or to make an appointment, call 715-564-2520 or 715-564-2525. Directions: From Prentice take Highway 8 east to West Knox Road and go south, N4517 West Knox Road, Brantwood.

## 10. SPIRIT MEMORIAL PARK

Located in the Town of Spirit, the park includes a monument which is a replica of the North Fork Spirit Bridge, a double arch bridge built in 1910 over the North Fork of the Spirit River. There are interpretive signs, a pavilion, two picnic shelters, family-sized grills, a playground, toilet, a Native Plant Garden designed by local environmental science educator and native plant advocate Quan Banh, and hiking trails with access to the Spirit River. The park is a geocache location. Directions: From Ogema take Hwy. 86 east to River Road, then north 1 mile. W1316 State Road 86, Brantwood.

## 11. YESTERDAY HOUSE AND LIBERTY SCHOOL

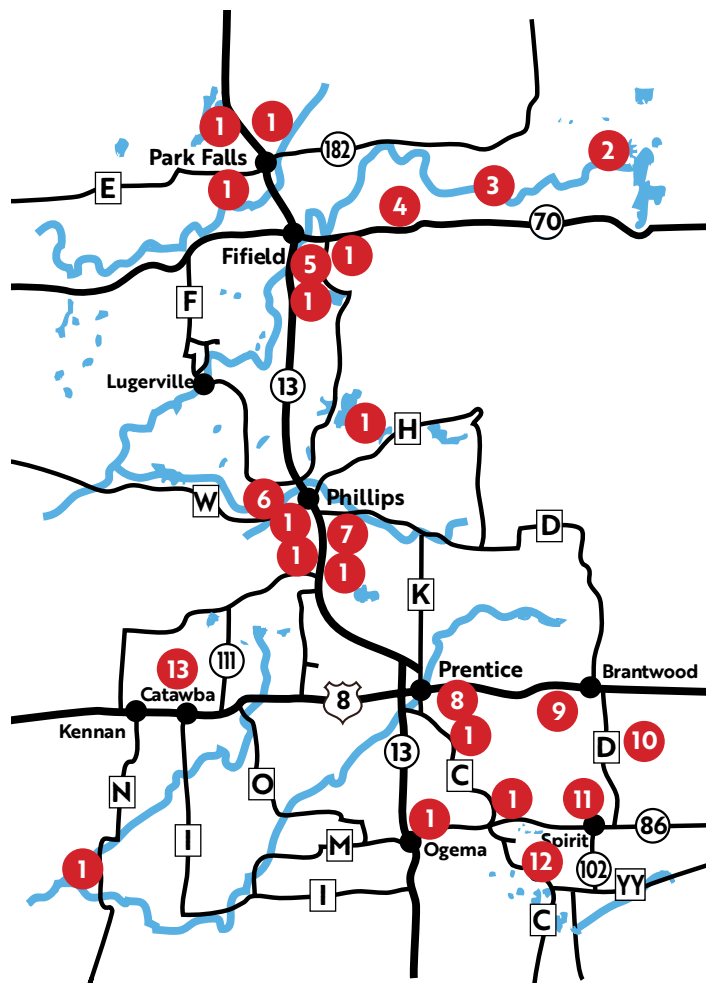
Yesterday House is a log house built by immigrants in 1885 in the Swedish style of dovetail comers and logs hewn convex and concave to fit without mortar. It is on the National and State Registers of Historic Places. Artifacts of life at the turn of the 20th Century and the original Post Office of Spirit, Wisconsin (1895-1939) are on display. A Barn Dance fundraiser is held on Memorial Day Sunday and an Open House on the day of the Spirit-Hill-Ogema 4-H Fair. Open during events or to schedule a tour call 715-564-3266 or 715-564-2570. The Yesterday House is located next to the Spirit Town Hall, W1316 State Hwy. 86 in unincorporated Spirit, Wis. Directions: From Ogema take Hwy. 86 east, 9.8 miles. The house is between Hwy. 102 and Cty. Rd. D.

## 12. TIMM'S HILL COUNTY PARK

Timm's Hill, the highest geographical point in Wisconsin, is nestled in southeastern Price County near Ogema. At 1,951.5 feet above sea level, the Hill and its accompanying park offer many scenic and recreational opportunities. Facilities include an observation tower, hiking, biking, snowshoeing, cross-country skiing and snowmobile trails, picnic shelter, playground, swimming area, pressure water, and vaulted toilets. A monument to early settlers is located near the parking area. The Timm's Hill Trail, a non-motorized connecting trail to the famed Ice Age National Scenic Trail, can be accessed within the park. County recommended bike and auto tours pass through the park. Directions: From Ogema take Hwy. 86 east, then south on County Road C to County Road RR. W3206 Cty. Rd. RR, Ogema.

## 13. JUMP RIVER VALLEY HISTORICAL MUSEUM

The Museum, operated by the Jump River Valley Historical Society, tells the story of Price County from its origin in 1879. The museum is open June through August on the 2nd and 4th Saturday of the month, 10 a.m. to 3 p.m. Tours are available by appointment during summer months. Admission is free. For appointments, call 715-339-6296 or 715-474-6775. Directions: W9224 U.S. Hwy 8, Catawba.





# PARKS

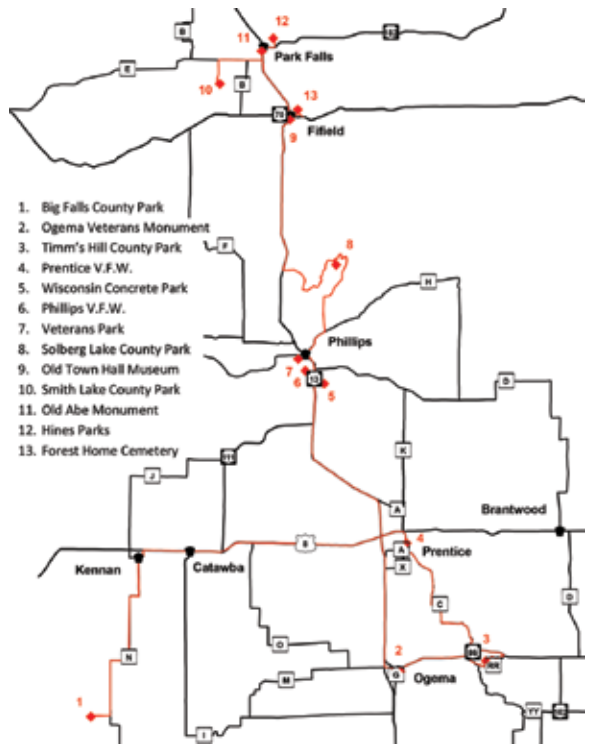


	Swim	Playground	Boat landing	Drinking water	Toilets	Picnic Tables	Fishing	Hiking	Grills	Shelter	Horse-shoes	Baseball	Volleyball	Dog Park
<b>BIG FALLS COUNTY PARK</b> 10 mi. S. of Kennan														
<b>BUCCANEER POND PARK</b> Village of Prentice														
<b>CHAPMAN PARK</b> Phillips														
<b>ELK LAKE (LIONITE) PARK</b> City of Phillips														
<b>FIFIELD VETERANS PARK</b> Hwy. 13 S. Fifield														
<b>HINES PARK</b> Park Falls														
<b>KENNAN MEMORIAL PARK</b> Village of Kennan														
<b>LIONS PARK</b> Village of Prentice														
<b>FORWARD PARK</b> City of Phillips														
<b>MOVRICH MEMORIAL COMMUNITY PARK</b> Town of Fifield														
<b>NEWMAN LAKE REC. AREA</b> 14 mi. E. of Park Falls off Hwy. 182														
<b>OLD ABE MEMORIAL PARK</b> Park Falls														
<b>PREISLER PARK</b> Village of Prentice														
<b>RIVERFRONT PARK</b> Village of Prentice														
<b>RIVERSIDE PARK</b> Park Falls														
<b>SMITH LAKE COUNTY PARK</b> 2 mi. W. of Park Falls off Hwy. E														
<b>SOKOL PARK</b> City of Phillips														
<b>SOLBERG LAKE COUNTY PARK</b> 6 mi. NW. of Phillips														
<b>SOUTHSIDE PARK</b> Park Falls														
<b>TIMM'S HILL COUNTY PARK</b> 6 mi. E. of Ogema														
<b>TOURIST PARK</b> Park Falls														
<b>TUSCOBIA TRAILHEAD COUNTY PARK</b> 1 mi. W. of Park Falls on Hwy. E														
<b>VILLAGE OF CATAWBA PARK</b> Village of Catawba														
<b>WAYSIDE PARK</b> Village of Prentice														
<b>WISCONSIN CONCRETE PARK</b> 1/2 mi. S. of Phillips														

## Vietnam Veterans Commemorative Trail

**COMMEMORATIVE PARTNER**

This trail stretches across the county presenting significant events of each year of this 13-year war. Each marker is presented as a tribute to the service and sacrifice of our brothers and sisters in arms.







# CAMPING

	Body of Water	Ownership	# of Units	Electricity	Drinking Water	ATV/UTV Trail Access	Shower/Toilets	Reservations
<b>BIG FALLS COUNTY PARK &amp; CAMPGROUND</b> · Price County Forestry Dept. W 11337 Big Falls Road · Kennan, WI 54537 · (715) 339-6371 Shore Fishing · Shelter · Volleyball Court · Swing Set · Grills · Hiking Trail · Firewood · Picnic Tables Horseshoe Pits · Pets OK	Jump River	C	6		*		V	
<b>CONNORS LAKE CAMPGROUND</b> · Flambeau River State Forest 2927N Hwy. M · Winter, WI 54896 · (715) 332-5271 Swimming Beach · Fishing · Fire Rings · Grills · Hiking Trails · Pets OK · Dump Station & Showers Nearby · Near ATV/UTV Trails Reservations online at <a href="https://dnr.wi.gov/topic/parks/">https://dnr.wi.gov/topic/parks/</a>	Connors Lake	S	29	4	*		S/P	*
<b>EMILY LAKE CAMPGROUND</b> · Chequamegon-Nicolet National Forest 2426 Forest Road 1178 · Park Falls, WI 54552 · (715) 762-2461 Swimming · Fishing · Grills · Pets OK · Boat landing	Emily Lake	F	11		*		V	
<b>HINES PARK &amp; CAMPGROUND</b> · City of Park Falls 1013 Saunders Avenue · Park Falls, WI 54552 · (715) 762-2436 Fishing · Grills · Boat Landing · Docks · Basketball · Hiking Trails · Shelter w/fireplace Playground · Horseshoe Pits Volleyball Court · Pets OK on Leash · Sewer & Water Hook-ups	Flambeau River	M	9	*	*	*	F	
<b>LAKE OF THE PINES CAMPGROUND</b> · Flambeau River State Forest 4198N Lake of the Pines Rd. · Winter, WI 54896 · (715) 332-5271 Swimming · Fishing · Fire Rings · Picnic Tables · Hiking Trails · Pets OK · Boat Landing Dump Station & Showers Nearby Reservations online at <a href="https://dnr.wi.gov/topic/parks/">https://dnr.wi.gov/topic/parks/</a>	Lake of the Pines	S	30		*	S/P	*	
<b>PHILLIPS CHAIN-O-LAKES CAMPGROUND &amp; PARK</b> · City of Phillips 639 Cty H. · Phillips, WI 54555 · (715) 339-3125 Day Use Area · Docks · Dump Station Nearby · Playground · Grills · Swimming Beach Fishing · Fire Rings · Pets OK	Elk Lake	M	20	*	*	*	*	
<b>PIONEER PARK &amp; CAMPGROUND</b> W4905 Holmes St. · Ogema, WI 54459 · (715) 767-5586 Fishing · Carry-in Boat Access · Picnic Tables · Firepits · Grills · Horseshoe Pits Equestrian Sites · Playground · Shelter	Mill Pond	M	7		*		F	
<b>PRICE COUNTY FAIRGROUNDS</b> N9130 Forest Lane, Located approximately one mile east of Phillips, WI on County Hwy H	Duroy / The Chain of Lakes	P	30	8	*	*	F/S	
<b>Riverside Campground</b> · Village of Prentice 1599 Dr. Mackinnon Dr. · Prentice, WI 54556 · (715) 428-2157, (877) 444-6777 Picnic Tables · Fishing · Kayak Landing · Fire Rings · Grills · First Come First Serve	Jump River	M	10	*			V	
<b>SAILOR LAKE CAMPGROUND</b> · Chequamegon-Nicolet Nat'l. Forest N12821 Forest Road 139 · Park Falls, WI 54552 · (715) 762-2461, (877) 444-6777 Fishing · Grills · Picnic Tables · Boat Landing · Shelter · Pets OK · On ATV/UTV/ORM Trail Reservations online at <a href="http://www.recreation.gov">www.recreation.gov</a>	Sailor Lake	F	25		*	*	V	*
<b>SMITH LAKE COUNTY PARK &amp; CAMPGROUND</b> · Price County Forestry Dept. N14763 Omaha Road · Park Falls, WI 54552 · (715) 339-6371 30 Sites w/Electric · On ATV/UTV Trail · Firewood · Shelter · Boat Landing · Horseshoe Pits Dump Station · Picnic Tables · Fishing · Hiking · Swimming · Grills · Pets OK · Playground	Smith Lake- Flambeau River	C	32	*	*	*	S/F	
<b>SOLBERG LAKE COUNTY PARK &amp; CAMPGROUND</b> · Price County Forestry Dept. N10750 County Park Road · Phillips, WI 54555 · (715) 339-6371 On ATV/UTV Trail · Swimming · Grills · Picnic Tables · Dock · Fishing Pier · Boat Landing Hiking/Biking Trails · Shelter · Firewood Playground · Volleyball Court · Horseshoe Pits Pets OK · Dump Station	Solberg Lake	C	60	*	*	*	S/F	
<b>TWIN LAKES CAMPGROUND</b> · Chequamegon-Nicolet Nat'l. Forest N16100 Forest Road 142 · Park Falls, WI 54552 · (715) 762-2461 · (877) 444-6777 Swimming · Fishing · Grills · Picnic Tables · Pets OK · Boat Landing Reservations online at <a href="http://www.recreation.gov">www.recreation.gov</a>	Twin Lake	F	17		*		V	*
<b>WABASSO LAKE RECREATION AREA</b> · Chequamegon-Nicolet Nat'l. Forest 2584 Forest Road 514 Park Falls, WI 54552 · (715) 762-2461 Walk-In Tent Camping · Picnic Tables · Pets OK · Fishing · Boat Landing, Electric Motors Only	Wabasso Lake	F	5		*		V	

Type of Ownership: F- Federal, S-State, C-County, P-Private, M-Municipal

Toilets: P-Pit, F-Flush S-Shower V-Vault



# FORESTS • NATURAL AREAS • WILDLIFE

## CHEQUAMEGON-NICOLET NATIONAL FOREST

Visitors to the 150,000-acre Chequamegon-Nicolet National

Forest have a wealth of nature to enjoy. They can boat or fish on one of the many lakes, rivers, or streams. They can spend many hours swimming, waterskiing, picnicking, nature watching, camping, ATVing, UTVing, off-road motorcycling, biking, and hiking on trails or back-country roads. In the winter they can cross-country ski, fat bike, snowshoe, ATV/UTV or snowmobile through these same areas lying hushed and quiet under a mantle of crystal white snow.



Black bear, white-tailed deer, raccoon, snowshoe rabbit, squirrel, turkey and ruffed grouse provide hours of top quality sport to the hunter and stimulating subject matter to the photographer. For the angler there are musky, northern pike, walleye, bass, panfish, and trout to pursue!

## PRICE COUNTY FOREST

The forest is comprised of 92,000 acres and offers the outdoor enthusiast a wide array of activities to choose from. There are several walking trails for hunting ruffed grouse, wild turkey, and deer, and the many area lakes provide anglers a variety of species to target including walleye, musky, bass, northern pike, and panfish. In the spring, summer and fall, various trails can be used for ATVing, UTVing, off-road motorcycling, horseback riding, mountain biking, and hiking; and during the winter they allow for fat biking, snowshoeing, cross-country skiing, ATVing, UTVing, and snowmobiling.

There are many areas that offer opportunities for wildlife viewing including Cranberry Creek, Camp 5 Waterfowl Dam, and the Steve Creek area.

## STATE FOREST

There are approximately 28,500 acres of state forest land in Price County. The largest section is the Kimberly Clark Wildlife Area, an 8,700-acre property located 12 miles west of Phillips. The property consists of bracken fern grasslands, upland aspen/fir, northern hardwoods and a tamarack/black spruce bog. This property is primarily managed for grouse, deer, turkey, and bear. Prescribed burning is used to maintain about 4,000 acres of early successional habitat for grouse. Deer, wolves, coyotes, badgers, foxes, sandhill cranes and numerous other species use these open areas regularly. Over 17 miles of firebreaks have been created, and several small flowages are maintained for waterfowl and wild rice production.



## FLAMBEAU RIVER STATE FOREST

The 90,000-acre Flambeau River State Forest covers parts of Price, Sawyer, Rusk, Ashland and Iron counties. Often referred to as the "premier whitewater river in the Midwest," the Flambeau River provides a unique wilderness experience. Camping is permitted at designated sites along the North Fork of the Flambeau River. Within the Flambeau River State Forest there are two rustic campgrounds (Lake of the Pines & Connors Lake), snowmobile, cross-country ski, snowshoe, mountain biking, hiking, and ATV/UTV trails. The Connors Lake Picnic Area has amenities for picnics, swimming and boating. The entire forest is open to public hunting for waterfowl, deer, bear, grouse, turkey and other game species.

Elk were reintroduced to the forest in 2017 where they are finding high quality forage and predator escape cover.

## NATURE ADVENTURES FOR MORE INFORMATION, CONTACT:

- Chequamegon-Nicolet National Forest, 1170 S. 4th Ave., Park Falls, WI 54552, 715-762-2461, [fs.usda.gov/cnnf](http://fs.usda.gov/cnnf)
- Price County Forestry & Parks, 104 S. Eyder Ave., Phillips, WI 54555, 715-339-6371, [co.price.wi.us/181](http://co.price.wi.us/181)  
Forestry-Parks-Department
- State Forest: Wisconsin DNR, 873 S. 4th Ave., Park Falls, WI 54552, 715-762-3204, [dnr.wi.gov/topic/stateforests/](http://dnr.wi.gov/topic/stateforests/)
- Flambeau River State Forest: W1613 County Road W, Winter, WI 54896, 715-332-5271, [dnr.wi.gov/topic/stateforests/FlambeauRiver](http://dnr.wi.gov/topic/stateforests/FlambeauRiver)



## NATURE ADVENTURES

Wildlife is most active at dusk and dawn, and during the spring and fall. For best viewing, wait quietly and scan the clearings adjacent to wooded areas. Binoculars are helpful, especially during spring hatching and birthing times when it is best to keep your distance. Parking and walking trails are available at each site.

### CRANBERRY CREEK WATERFOWL DAM

715-339-6371 Price County Forestry & Parks. 5 miles South of Phillips on Hwy 13, 1 mile West on Aspen Rd., 2 miles on Cranberry Rd. to dike

Plentiful aspen, native furbearers, waterfowl, upland game birds.

### CAMP 5 WATERFOWL DAM

715-339-6371 Price County Forestry & Parks. 10 miles Northwest of Phillips on County Rd. F, cross the South Fork of the Flambeau River bridge, 2 miles North on Popple Hill Rd., 2 miles East on Camp 5 Road to dike.

Stately red pine, native furbearers, waterfowl, upland game birds, very picturesque.

### RILEY LAKE WILDLIFE AREA

715-762-2461 Chequamegon-Nicolet National Forest. 12 miles East of Fifield on Hwy. 70, 6 miles South on USFS Road 137, 2 miles East on USFS Road 136, 6 miles North on USFS Road 505, back to Hwy. 70.

Sharp-tailed grouse, upland game birds, songbirds, bear, deer. Good outdoor skills helpful. Accessible in spring, summer & winter.

### KIMBERLY-CLARK WILDLIFE AREA

715-762-3204 WI Dept. of Natural Resources. 16 miles West of Phillips on County Road W, 2 miles North on Price Lakes Road or 10 miles West of Fifield on Hwy. 70, 3.5 miles South on Price Lakes Road.

Sharp-tailed grouse, sandhill cranes, eagles, ospreys, herons, deer, bear, loons, grassland songbirds, sparrow and roughleg hawks, spring creeks.

### STEVE CREEK FLOWAGE WILDLIFE AREA

715-339-6371 Price County Forestry & Parks. 11 miles South of Kennan on County Road N to park entrance. Steve Creek is 1/2 mile South of park entrance sign.

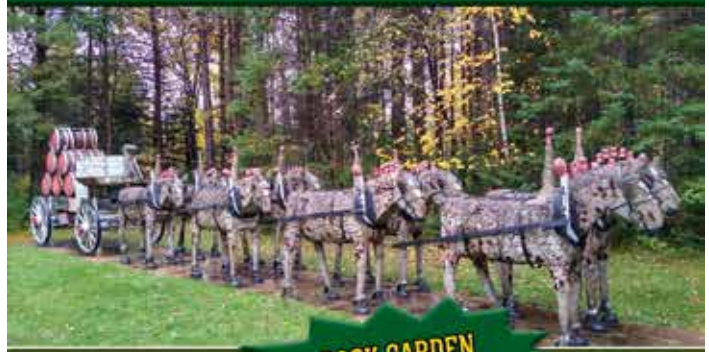
Stately white and red pine, waterfowl, bald eagles, white-tailed deer, very picturesque on South Fork of the Jump River.

### SPRING CREEK WILDLIFE AREA

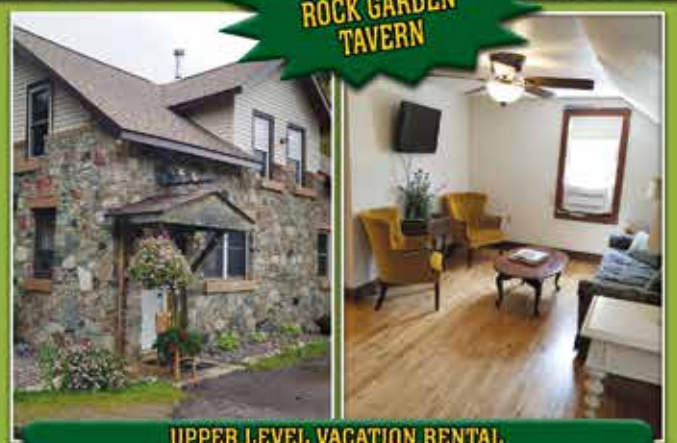
715-762-3204 WI Dept. of Natural Resources. 3 miles South of Phillips on Hwy. 13, 5 miles southwest on Hwy. 111, then East on Pioneer Road to project sign.

Wild rice, ruffed grouse, waterfowl, loons, ospreys, songbirds, deer, bear, native furbearers, spring creeks.

# WISCONSIN CONCRETE PARK



ROCK GARDEN  
TAVERN



UPPER LEVEL VACATION RENTAL



**PARK OPEN 7 DAYS A WEEK  
24-HOURS A DAY**

**The Countryside Artist's Gallery and Gifts  
is open Thursday-Sunday starting Memorial day  
weekend through October**

**(715)-339-7282**

**N8236 Hwy 13 South, Phillips**

Follow us on Facebook and Instagram @Wisconsin Concrete Park

**[www.wisconsinconcretepark.org](http://www.wisconsinconcretepark.org)**





# FISHING & HUNTING

## PRICE COUNTY IS AN ANGLER'S PARADISE

With unlimited opportunities to fish for walleye, northern pike, bass, musky and many varieties of panfish.

The first Saturday in May marks the opener for many popular game fish including walleye, and the Saturday before Memorial Day marks the opener for musky. Smallmouth bass season opens the third Saturday in June. Price County has a naturally occurring population of lake sturgeon, an unusually large game fish. Sturgeon season begins the first Saturday in September and ends September 30.

With the many fishing options in Price County, anglers can try several waters during their stay including lakes, rivers and trout streams.

Ice fishing is a very popular sport in the area, especially for panfish, walleye and northern pike. Fishing on the "frozen pond" typically begins in early December.

Visit one of our local bait shops for recommendations on lakes to fish, guide services and a great selection of rods, reels, bait and other fishing gear.

Visit [dnr.wi.gov](http://dnr.wi.gov) on the web for lake maps, regulations, boat access sites, shore fishing locations, to purchase your license, and for other information. The DNR Call Center Staff is available 7 days a week (7 a.m.-10 p.m.) at 888-936-7463.

## AND THE HUNTING...

Hunting The Chequamegon-Nicolet National Forest, Flambeau River State Forest, Price County Forest and other state and industrial lands provide over one million acres of public land for hunting endeavors.

Price County, especially the Park Falls area, has the most extensively managed Ruffed Grouse habitat in the world, hence the title of "Ruffed Grouse Capital of the World." The habitat also benefits deer, bear and small game. Guides will assist you in your hunt for grouse, trophy deer, bear, and other species.

Visit [dnr.wi.gov](http://dnr.wi.gov) on the web for hunting regulations, season dates, to purchase your license, and for other information. The DNR Call Center Staff is available 7 days a week (7 a.m.-10 p.m.) at 888-936-7463.

Photo credit: R. Berg



Photo credit: R. Waara





# Find the Perfect Price County Lake

LAKE	Acres	Max depth	Public access	Musky	N Pike	Walleye	Bass	Panfish	Trout
Axel	15	24	X					X	
Bass S34 T38 R1E	17	30					X	X	
Bass S15 T40 R2W	84	49	X	X		X	X	X	
Bass S32 T39 R2W	58	41		X		X	X	X	
Bass S11 T34 R2E	20	33	X				X		X
Bass S18 T38 R2W	94	45	X	X			X	X	
Big Dardis	144	23	X	X	X	X	X	X	
Big Pine	300		X	X	X	X	X	X	
Blockhouse	242	12	X	X	X		X	X	
Buckman	35	18					X	X	
Butternut	1006	32	X	X	X	X	X	X	
Cochram	111	16	X				X	X	
Cranberry	512		X		X		X	X	
Crane & Chase	86	22	X	X		X	X	X	
Crowley Flowage	422	23	X	X	X	X	X	X	
Dave	21	38					X	X	
Davis	72	8					X	X	
Deer S34 T40 R3E	27	12		X		X	X	X	
Deer S6 T37 R1E	145	18	X	X	X		X	X	
Dog	36	50		X			X	X	
Duroy	379	18	X	X	X	X	X	X	
Elk	88	25	X	X	X	X	X	X	
Fickle	10	26					X	X	
Fourmile	10							X	
Gardner	24	36		X	X	X	X	X	
Gates	91	6	X		X		X	X	
Granger	15	12	X				X	X	
Grassy	80	7	X	X	X	X	X	X	
Hansen (Oliver)	23	16					X	X	
Hay	103	6	X		X		X	X	
Hoffman	11	5	X					X	
Homestead	19	25						X	
Hultman	181	14		X	X		X	X	
Island	29	10					X	X	
Kabol	67	17		X		X	X	X	
Leonards	11						X	X	
LeTourneau	124	16	X		X		X	X	
Little Dardis	16	12						X	
Lit. Ottetail Flowage	11								X
Long S7 T37 R1E	418	54	X	X	X	X	X	X	
Long S31 T39 R2W	241	49		X		X	X	X	
Lower Price	92	27		X	X		X	X	
McArthur	38	11		X			X	X	
Middle Price	52	5		X	X		X	X	
Miles	32	31					X	X	
Millpond	10	20						X	
Millquaham	35	6		X		X	X	X	
Minnow	10	25	X				X	X	
Mud S17 T40 R1W	20	8		X			X	X	

LAKE	Acres	Max depth	Public access	Musky	N Pike	Walleye	Bass	Panfish	Trout
Mud S5 T38 R3E	30	4	X						
Murphy	24	8					X	X	
Musser Flowage	563	16	X	X	X	X	X	X	
Nettie B	38	12					X	X	
Newman	91	47	X				X	X	
Nichols	22	5	X		X		X	X	
Park Falls Flowage	431	17	X	X	X	X	X	X	
Patterson	70	34	X						X
Pearson	21	48				X	X	X	
Perch	8	15					X	X	
Peters	19	30					X	X	
Pike	806	17	X	X	X	X	X	X	
Pixley Flowage	193	23	X	X	X	X	X	X	
Planet (Perch)	12	32					X	X	
Pond	55	5			X			X	
Prentice Flowage	16	10	X	X	X	X	X	X	
Priens	25							X	
Priest	32	10			X			X	
Quimette	15	14			X		X	X	
Rice (Amik)	197	12	X	X	X	X	X	X	
Riley	182	6	X		X		X	X	
Round T40 R3E S23	726	24	X	X	X	X	X	X	
Round T40 R3W S7	3	16							X
"S"	33	23					X	X	
Sailor	170	7	X		X		X	X	
Sailor Creek Flow	215	8	X	X	X		X	X	
Schnur	158	27		X	X	X	X	X	
Sixteen	119	5						X	
Solberg Flowage	844	16	X	X	X	X	X	X	
Soo Lake (Lac Sault Dore)	561	21	X	X	X	X	X	X	
Spirit	126	9	X	X	X	X	X	X	
Spur	12	19	X		X		X	X	
Stone	79	16	X	X	X		X	X	
Sweeney	42	14		X	X		X	X	
Ten	43	37	X	X			X	X	
Thirty-five	8	10						X	
Thompson	111	25		X		X	X	X	
Three	25	22					X	X	
Timms	19	38	X				X	X	
Tracy	15	16					X	X	
Tucker	118	32	X	X	X	X	X	X	
Turner	149	12	X	X	X	X	X	X	
Twin	19	16	X				X	X	X
Upper Price	43	13		X	X		X	X	
Whitcomb	44	33	X				X	X	
Wilson Lake	351	11	X	X	X	X	X	X	
Wintergreen	53	15	X		X		X	X	
Worcester	100	37	X	X	X	X	X	X	



# TRAILS

## Explore Price County's Trails!

The communities of Park Falls, Phillips, Lugerville, Fifield, Prentice, Brantwood, Ogema, Kennan and Catawba welcome you to our beautiful snowmobile trails, ATV routes and silent sports opportunities. Your northwoods experience begins here!

### 500 MILES OF SNOWMOBILE TRAILS

including the Flambeau Trail System, Tuscobia State Trail, Doc Frye Memorial Trail, Solberg Trail and Flambeau River State Forest Trail. Our area is well-known as the place to go for a wonderful snowmobile experience. Winding, hilly trails with tall pine trees, ice-covered lakes and marshes bring riders back year after year.

### PRICE COUNTY SNOWMOBILE TRAILS ASSOC., INC.

1-800-269-4505 (for trail information) [www.awsc.org/price.html](http://www.awsc.org/price.html)

### PRICE COUNTY CLUBS:

Catawba Kennan Driftsplitters, Eisenstein Bushwackers, Elk River Pioneers, Fifield Sno-Drover, Lugerville Chasers, Northwoods Hi-Riders, Northwoods Riders, Park Falls Sno-Gypsies, Phillips Chaparrals, Prentice Bushbenders

### 200 MILES OF ATV, UTV, AND OFF-ROAD MOTORCYCLE TRAILS

including the Tuscobia State Trail, Georgetown Trail, the Pine Line Trail, and Federal and County forest trails. Travel the 70 mile Flambeau Trail, 38 mile Flambeau River State Forest Trail, 64 mile Tuscobia Trail or 26 mile Pine Line Trail (winter use only).

### PRICE COUNTY ATV CLUBS:

Butternut Trail Midgets, Flambeau Riders ATV/UTV Club, Fifield Dirt Devils, Lakeland ATV/UTV, Northwoods Range Rovers, Southern Price County ATV Club, Spirit Valley Riders

### 18,000 ACRES OF WATER

including the Flambeau River, Pike Lake Chain, Phillips Chain of Lakes and many more bodies of water throughout the County.

### 340,000 ACRES OF PUBLIC LAND

including the Chequamegon-Nicolet National Forest, Flambeau River State Forest, and the Price County Forest.

### 1,000 MILES OF SILENT SPORT TRAILS

for biking, hiking, equestrian, canoe, kayak, cross-country ski, snowshoe, Skijor and fat bike enthusiasts.

### PRICE AREA TRAIL HUB (PATH) SILENT SPORTS.

[www.priceareatrailhub.org](http://www.priceareatrailhub.org)

## PRICE COUNTY ATV ASSOC., INC.

### • GENERAL ATV INFORMATION •

Follow Posted Age & Speed Limits

PLEASE STAY ON AUTHORIZED ATV TRAILS/ROUTES.

Check with local Townships for resident access to trails.

### LICENSING

ATV riders must meet current state requirements for ATV licensing, including Youth Operator Restrictions. Consult "Wisconsin All-Terrain Vehicle Laws" available at Wisconsin DNR offices or [www.dnr.state.wi.us](http://www.dnr.state.wi.us)

### TRAIL PASS

Trail passes are required for an ATV not registered in Wisconsin. For more information and locations where passes can be purchased, call 877-762-2703 or visit [www.dnr.state.wi.us](http://www.dnr.state.wi.us)

### • PRICE COUNTY TRAIL GUIDE •

If unsure of which Township you are in, look at a resident Fire Sign. Trailpasses are placed on every Fire Sign.

### TOWNSHIPS

CATAWBA | ELK | EMERY | EISENSTEIN | FIELD  
FLAMBEAU | GEORGETOWN HARMONY | HILL LAKE | KENNAN | OGEMA | PRENTICE | SPIRIT  
WORCESTER

Open Year-Round - All Town Roads  
(Unless Posted)

### HACKETT

Open Year-Round - Designated Roads  
(Unless Posted)

### KINCE

Open Year-Round - Designated Roads  
Closed when Roads are Posted  
(Ex. Spring Break-up)

### CITIES

PARK FALLS & PHILLIPS  
Open Year-Round, All Roads EXCEPT HWY 13  
(Unless Posted)

### VILLAGES

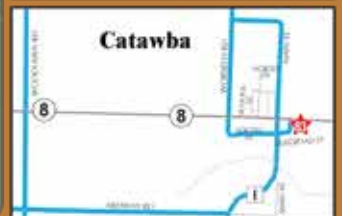
PRENTICE, CATAWBA, KENNAN  
Open Year-Round - Designated Roads  
(Unless Posted)

### ADVERTISER INDEX

No Gas | With Gas

- |   |   |
|---|---|
| 1. Signature Sign & Graphics                | 48. The Badger's Den Sports Bar & Grill         |
| 2. Butternut Cafe                           | 50. Corner Connection                           |
| 3. Butternut Area Business Alliance         | 51. Sunset Haven Resort / Polish Palace Bar     |
| 4. Bobber's on the Lake                     | 52. Birch Island Resort Bar & Grill             |
| 5. Butternut Feed Store                     | 53. Phillips Cafe & Catering                    |
| 7. Double D's Pub & Pizzeria, LLC           | 54. Rock Garden Tavern & Restaurant             |
| 16. Oxbow Resort                            | 55. Trailside Bar & Grill                       |
| 17. 9-Mile Tavern                           | 56. Friends of Fred Smith, Inc.                 |
| 18. Northwoods Supper Club                  | 59. Ogema House Hotel                           |
| 20. Merri Cassidy's Saloon                  | 60. Happy Daze Restaurant & Bar                 |
| 21. Muddy Jacks                             | 61. Jolly Inn                                   |
| 22. Phillips Area Chamber of Commerce       | 62. Crane Chase Tavern                          |
| 23. Thunderhead Lodge LLC                   | 63. Phillips Lanes                              |
| 24. Round Up Bar & Grill                    | 64. The Rail Trail Cafe                         |
| 25. Kountry Kafe & Catering                 | 66. Mohr's Bar LLC                              |
| 26. Winoquegan Lake Resort                  | 67. The Prentice Truck & Travel Center          |
| 27. Winoquegan's Flambeau Resort            | 68. Ripsaw Saloon                               |
| 28. Moose Jaw Resort                        | 69. Comfort Cove Resort                         |
| 29. Springstead Lake Lodge                  | 70. Midway Tavern & Cabins                      |
| 30. 9th Hour Resort LLC                     | 71. Steve's Service Center                      |
| 31. Northshore Bar & Grill                  | 72. J & D's Real Estate Resort                  |
| 32. Siskin's Backcountry Resort Bar & Grill | 73. Lt. JAG's                                   |
| 33. Raab's Extra Innings                    | 74. Zonito's Bar LLC                            |
| 34. Harbor View Pub & Eatery                | 75. JC's North of 8                             |
| 35. Laurie's Coach                          | 76. Church's Little Station LLC                 |
| 36. Club 13 Restaurant & Lounge             | 77. Ogema Hills Gas & Oil                       |
| 37. A & W Restaurant                        | 78. Soo Lake Bar & Grill                        |
| 38. Timber Inn Motel                        | 79. Westwood Golf Course / Sandtrap Bar & Grill |
| 39. Ross's Sport Shop                       | 81. Tri-Mark BP                                 |
| 40. Foxak's Tavern                          | 82. Hillside Bar & Grill                        |
| 41. Badger's Sports Center                  | 83. Catawba Farm Supply                         |
| 42. Meister's Bar & Grill                   | 84. Tommy's 3-Mile Roundabout                   |
| 43. Methodist Cooperative                   | 85. Flambeau Forest Inn                         |
| 44. Super 8 - Phillips                      | 87. Phillips Lumber & Hardware                  |
| 45. RotMax Now Horizons Realty, LLC         | 88. Hawk Top - Phillips                         |
| 46. Sunset Bay Supper Club                  | 89. Price County Powersports                    |
| 47. Dieder's South Fork Bar & Grill         | 90. Bonnie's Diner                              |
| 48. Reeve's Resort                          |   |

Thank Our Advertisers for their Support. Promoting their Businesses.



Price County ATV Trail Map has been created by Sigh Studio & Print Shop, LLC, under the direction of the Price County ATV Trails Assoc ©2022.









# TRAILS

## Explore Our Silent Sports Trails

### SOLBERG LAKE TRAIL

**TRAILHEAD LOCATED ON HICKS LANDING ROAD  
APPROXIMATELY 1 MILE NORTH OF SOLBERG LAKE ROAD.**

*Directions from Phillips, WI: East on Co Hwy H for 1.4 miles, turn left onto E Solberg Lake Rd for 5.3 miles, continue onto Hicks Landing Rd (right) for 1.1 Miles, destination is on your right.*

The trail, located on Price County Forest Land, is very scenic and passes through both pine and aspen timber with gently rolling terrain. This trail is groomed for classic skiing and is a very good trail for beginner skiers. There are (2) loops on the east side of Hicks Landing Road and a 1 1/4 mile each way out and back section on west side of the road, across from the trail head for a total of approximately 4.1 miles of trail. Snowshoeing and Fat Biking are allowed to the side of the set cross-country skiing tracks (please do not ride or snowshoe on diagonal skiing tracks). We ask that trail users not hike the groomed trails without snowshoes during the winter season.

Price County is a silent sports enthusiast's paradise! Enjoy the beauty and tranquility of the outdoors as you hike, ski, snowshoe or bike. There are a variety of trails available for all skill levels on public property and National Forest lands. If you prefer your silent sports on the water, Price County's many rivers and lakes offer unparalleled opportunities for canoeing, kayaking, and paddle boarding.

### PHILLIPS SCHOOL FOREST TRAILS

**N9199 N. WORCESTER RD., PHILLIPS, WI 54555.**

*Directions from Phillips, WI: East on Co Hwy H for 2.9 miles, turn right onto Big Elk Rd for .6 miles, turn right onto N Worcester Rd for .3 miles, destination is on your right.*

There are two separate very scenic trail systems located in the Phillips School Forest. The cross-country ski trails consist of approximately 3.5 miles of multiple loops ranging from gently rolling to steep climbs and winds through a diverse forest and an open meadow. The entire ski trail is groomed for skate skiing while loops 1 & 2 have tracks set for classic skiing. In the winter months please do not hike, snowshoe or fat bike on the groomed ski trails. The single track system offers approximately 4 miles of challenging trails for hiking, running, snowshoeing and fat biking with multiple ups/downs and sharp turns. Trail users are asked not to hike the groomed single track trail system during the winter months without snowshoes. The Phillips School Forest trails are open all year.

Price Area Trail Hub, Inc (PATH), a 501c3 non-profit organization, in conjunction with Price County and the School District of Phillips, currently grooms and maintains 3 Silent Sports Trails in Price County. There are no trail fees.



Photo credit: J. Favret



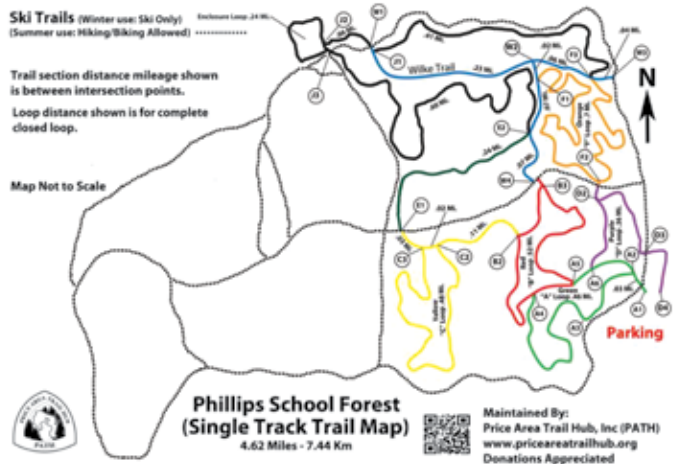
### Solberg Lake Trail

4.16 Miles - 6.69 Km

Maintained by:  
Price Area Trail Hub, Inc. (PATH)  
[www.priceareatrailhub.org](http://www.priceareatrailhub.org)  
Donations Appreciated



**Easy Trail**  
Trail distances shown are between intersections  
Groomed for Classic Skiing. Walkers, Snowshoers and Fat Bikes are welcome on groomed ski trail but please stay off of ski track =====



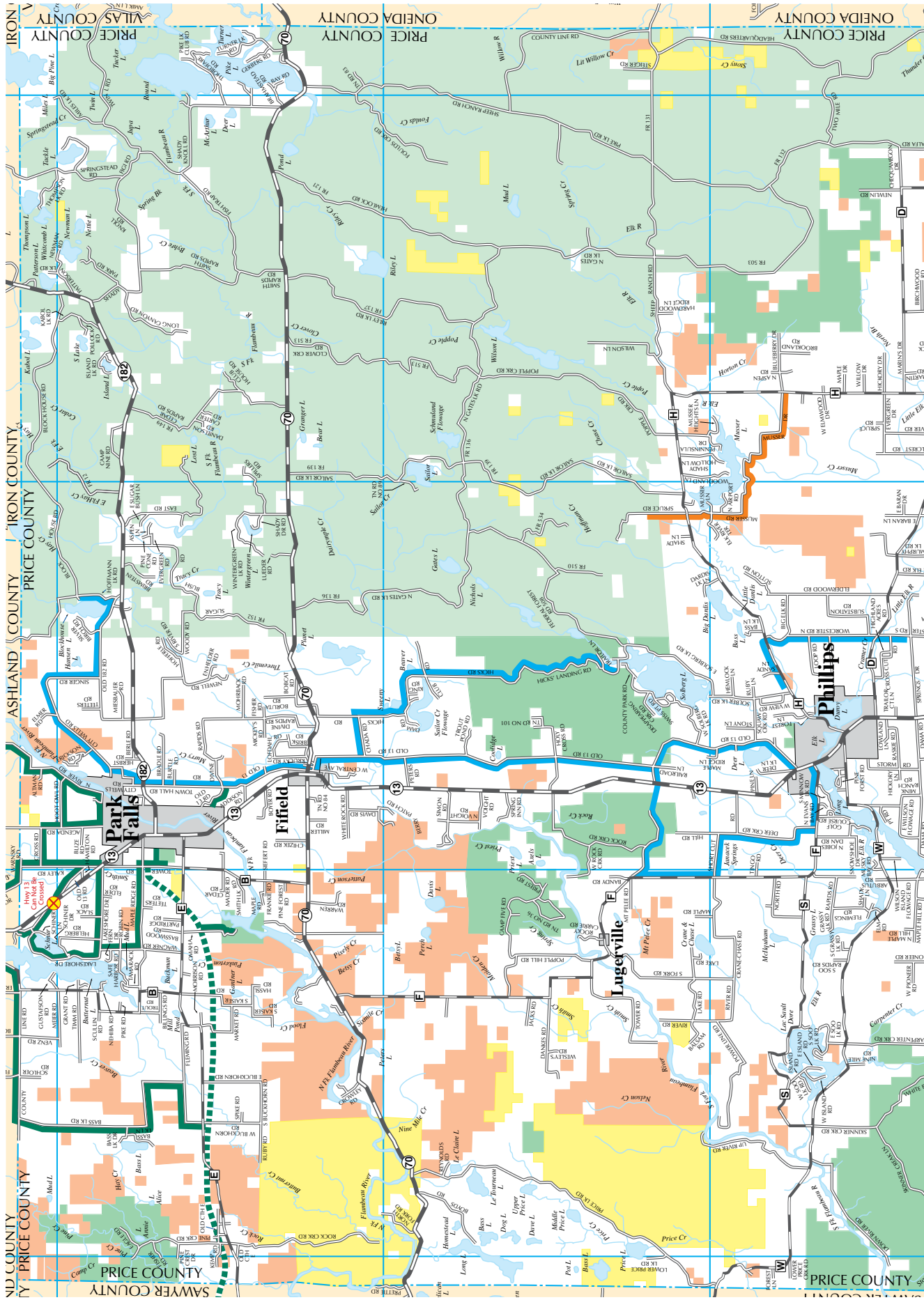
DETAILED TRAIL MAPS ARE AVAILABLE AT MANY AREA BUSINESSES AND AT:

**Park Falls Area Chamber of Commerce**  
4th Ave South, Park Falls, WI 54552 · [www.parkfalls.com](http://www.parkfalls.com)

**Phillips Area Chamber of Commerce**  
305 S. Lake Ave. Phillips, WI · [www.phillipswisconsin.net](http://www.phillipswisconsin.net)



# Explore Price County!





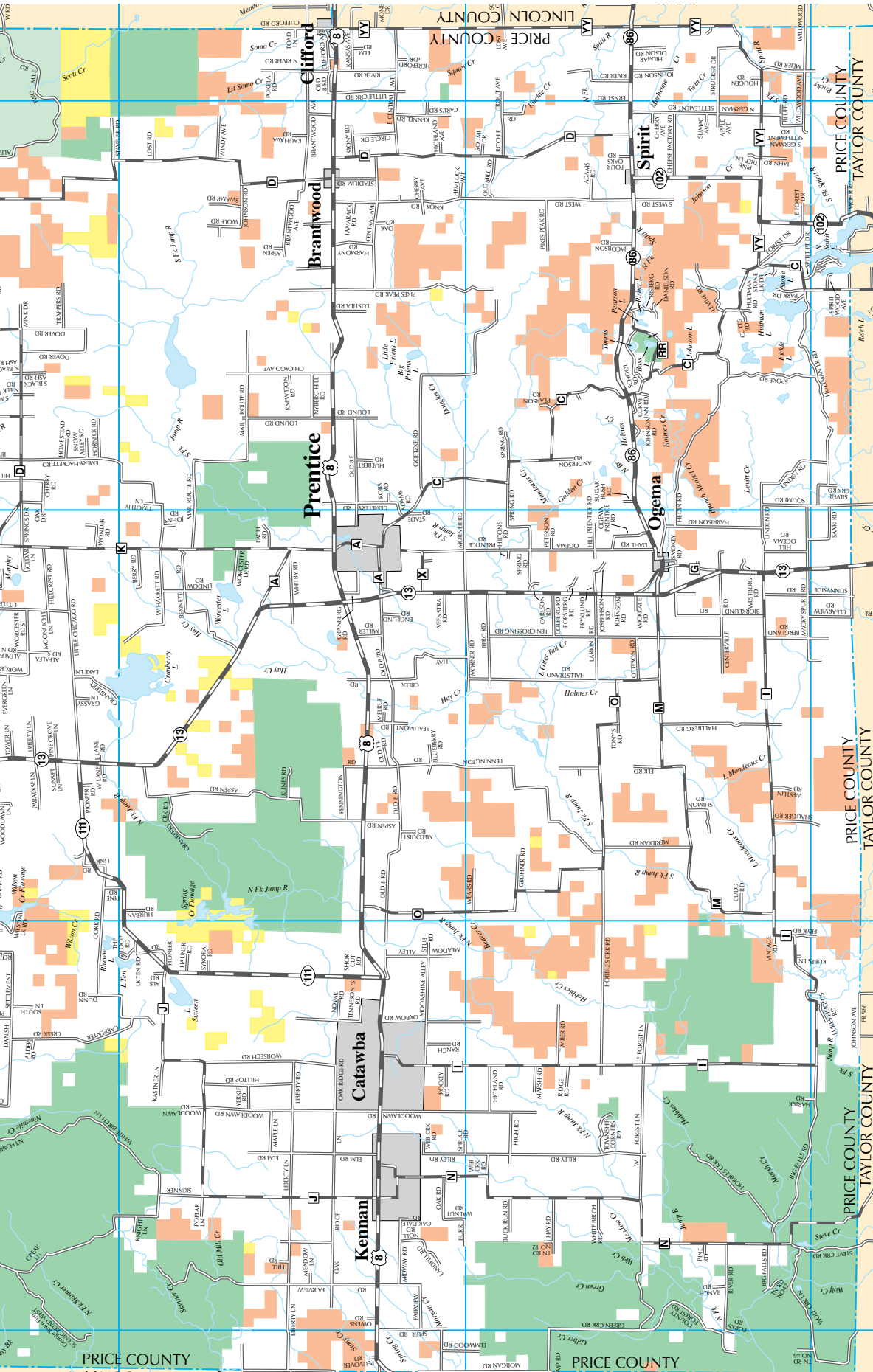


Photo credit: Kristin H.

Photo credit: J. Landwehr

Photo credit: Crazy Loon

**NEED MORE INFORMATION?**  
**Park Falls Area Chamber of Commerce**  
 715-762-2703 • [www.ParkFalls.com](http://www.ParkFalls.com)  
**Phillips Area Chamber of Commerce**  
 715-339-4100 • [www.PhillipsWisconsin.net](http://www.PhillipsWisconsin.net)





# TIMM'S HILL NATIONAL TRAIL

## A. TIMM'S HILL COUNTY PARK -

At an elevation of 1951.5 feet, this is Wisconsin's highest point, and the northern terminus of the Timm's Hill National Trail. The park is open 8am-10pm.

## B. HIGH POINT VILLAGE

Between Little and Big Bass Lakes is the Catch-A-Dream Lodge, the High Point Village and the Hill of Beans Coffee Shop.

## C. GLACIAL ERRATIC

The large boulder on the east side of the trail was transported to this spot on top of the glacier. When the glacier melted, the boulder was stranded here.

## D. GLACIAL LAKES

The trail passes several small glacial lakes that were formed when large blocks of ice were surrounded by glacial gravel and fill. When the ice melted, the lakes formed in the depressions left behind.

## E. HIGHWAY TO HEAVEN

The steep ascent of the trail is known as the Highway to Heaven by local skiers.

## F. ICE CONTACT SLOPE

The steep slope on the western edge of the trail was formed when glacial material piled against a glacial ice wall.

## G. NORLIN ONE ROOM SCHOOL HOUSE

This is the former site of the Norlin One Room School House. It was moved 2 miles west to the Timm's Hill Bed & Breakfast in 1998.

## H. GARDEN OF MEMORIES CEMETERY

The beautiful cemetery is on the east side of the trail.

## I. OLD SCHOOL TRAIL

The trail follows the old school trail that leads to the Norlin School House. The crossing at Helms Creek was created in 1986 to replace a log that had been used in the past by school children. In 2005 Beaumont Bridge was added.

## J. BEAUMONT SUGAR BUSH

This thick stand of sugar maple is tapped annually for maple syrup.

## K. HULTMAN BRIDGE

The trail passes thru a beautiful mature forest that has been in the possession of the Hultman family since the 1880's when homesteaded by Magnus Hultman, a Swedish immigrant.

## L. BLOMBERG BRIDGE

This 33 foot trestle bridge was constructed in 1904. The Blomberg families were instrumental in reassembling the bridge at this site in 1986.

## M. STONE LAKE ESKER

The isthmus between Hultman and Stone Lakes is a glacial esker. It is the largest esker in the area, reaching heights of up to 60 feet. The bald eagle nest on Stone Lake can be seen from the esker.

## N. SPIRIT PARK

Spirit Park has swimming and boating access to Stone Lake. Across the lake, the large white pine has a bald eagle nest near the top.

## O. BLOMBERG SUGAR BUSH

This thick stand of sugar maple is tapped annually for maple syrup. The stand has naturally regenerated after clear cutting in 1920.

## P. WEIX CREEK BRIDGE

The steel structure of this bridge is an old groomer from the Rib Lake Nordic Ski Club. The decking is railroad ties from the Soo Line Railroad.

## Q. CHANDLER HOMESTEAD

A red pine plantation fills the fields laboriously cleared by the Frank Chandler family, early homesteaders.

## R. OLD STEAM-HAULER CUT

Lappe Bridge crosses a trench approximately 25 feet wide and 300 feet long. In the early 1900s, a winter ice road was constructed to haul logs from Camp 9 to the Rib Lake Lumber Mill.

## S. RITCHIE LAKE

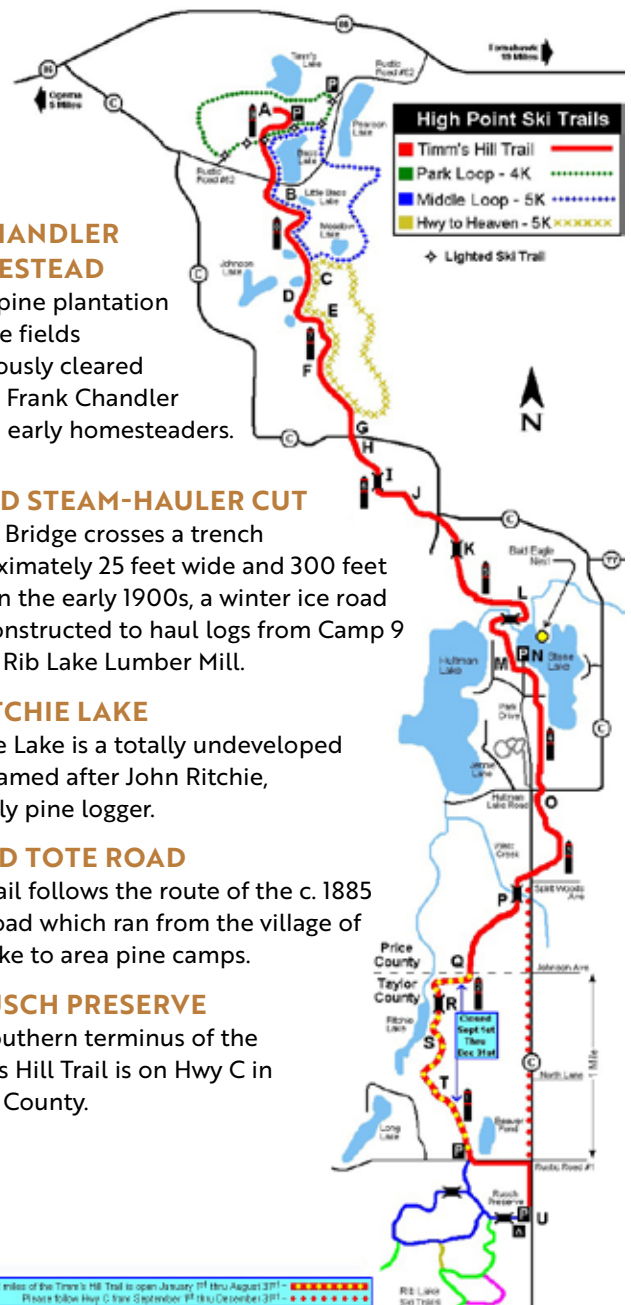
Ritchie Lake is a totally undeveloped lake named after John Ritchie, an early pine logger.

## T. OLD TOTE ROAD

The trail follows the route of the c. 1885 tote road which ran from the village of Rib Lake to area pine camps.

## U. RUSCH PRESERVE

The southern terminus of the Timm's Hill Trail is on Hwy C in Taylor County.



The southern 2 miles of the Timm's Hill Trail is open January 1st thru August 31st -  
Please follow Hwy. C thru September 1st thru December 31st -

# PRICE COUNTY SNOWMOBILE TRAILS ASSOC., INC.



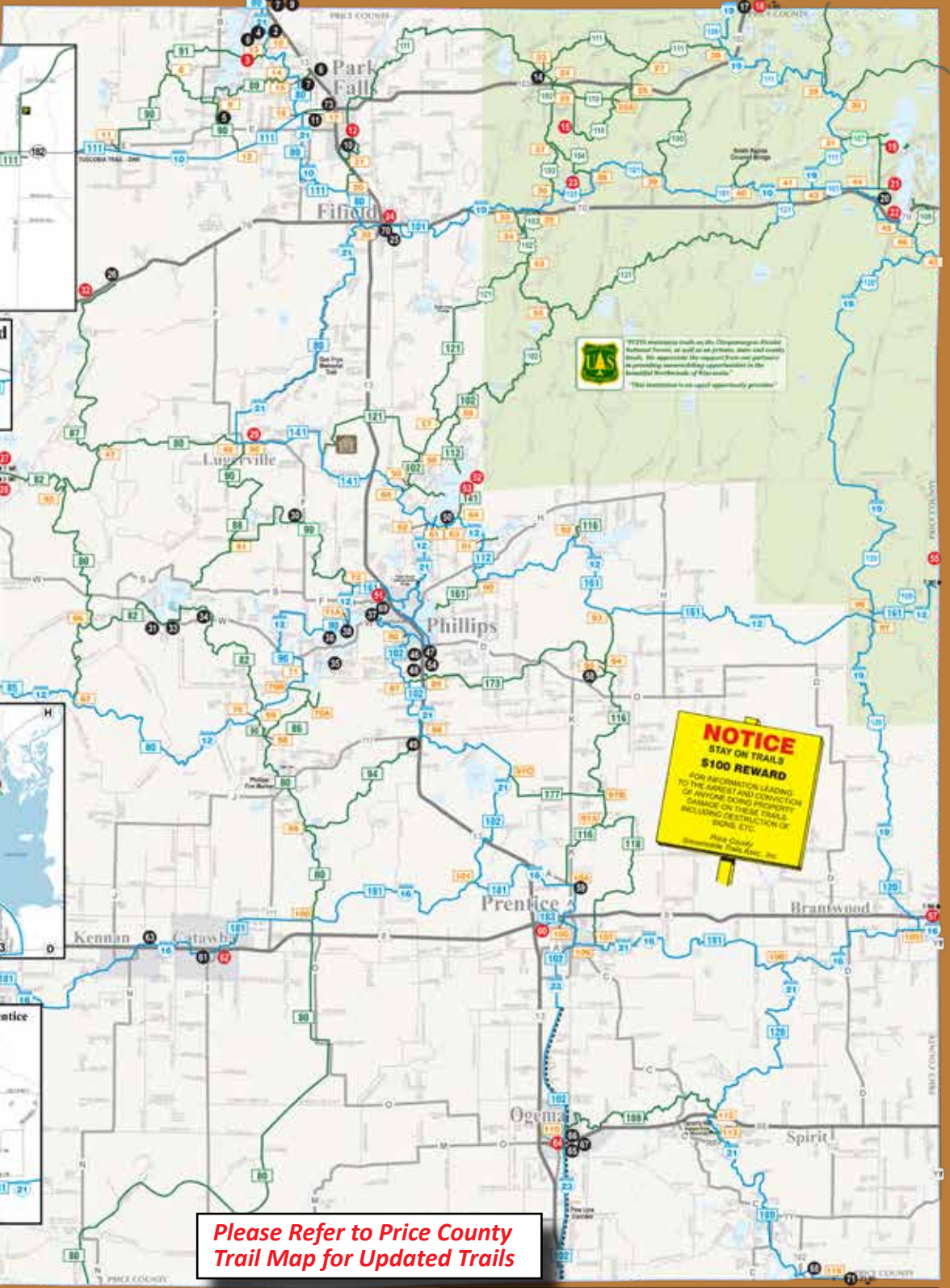
- |                                   |                                  |  |                                 |   |  |
|-----------------------------------|----------------------------------|--|---------------------------------|---|--|
| 1. SCHEMDECK'S SHANTY             | 14. ROUND UP BAR & GRILL         | 27. BIG BEAR LODGE, INC.                   | 40. RED PINES RESORT & SUITES   | 53. SUNSET BAY COPPER CLUB              | 62. CATAWBA FARM SUPPLY                  |
| 2. MIY POCKET'S                   | 15. WOLCIESZAK'S FLAMBEAU RESORT | 28. FLAMBEAU FOREST INN                    | 41. CLUB 13 RESTAURANT & LOUNGE | 54. SANDY HAVEN RESORT                  | 63. HAPPY DACE BAR & RESTAURANT          |
| 3. NORTHERN PINES RESORT          | 16. FORTY EIGHT INN              | 29. BOEDEL'S SOUTH FORK                    | 42. A&W                         | 55. POLISH POLICE BAR                   | 64. OGDEN HILLS GAS & SO                 |
| 4. ROBERT'S ON THE LAKE           | 17. SPRINGDEAN LAKE LODGE        | 30. CRANE CHASE TAVERN                     | 43. TAMBER INN MOTEL            | 56. THE ROCK GARDEN TAVERN              | 65. KAAB'S EXTRA INNINGS                 |
| 5. BIRD'S OUTHOUSE BAR            | 18. THE BRANCHES                 | 31. BOO LAKE BAR & GRILL                   | 44. PRICE COUNTY POWERSPORTS    | 57. REMBER'S SUCKERBERRY RESORT         | 66. THE RAG TRAIL CAFE                   |
| 6. BUTTERNUT LAKE LODGE           | 19. MOOSE JAW WOODS LODGE        | 32. OVAO RESORT                            | 45. PHILIPPS CAFE               | 58. BAR & GRILL                         | 67. LAUREN'S COACH, LLC                  |
| 7. RIDGE HUNTERS BAR & GRILL      | 20. NORTHERNSIDE BAR & GRILL     | 33. CORNER CONNECTION BAR                  | 46. MEDVONG COOPERATIVE CENEX   | 59. TRU MOUNT BP                        | 68. MOH'S BAR, LLC                       |
| 8. BUTTERNUT CAFE                 | 21. WOLF HOUR RESORT, LLC        | 34. MADRUSSER SERVICE CENTER               | 47. SUPER 8                     | 60. PUSAK'S TAVERN                      | 69. HARBOR VIEW PUB & EATERY             |
| 9. DOUBLE O'S PUB & PIZZA, LLC    | 22. RUSTY JACK'S                 | 35. BIRCH ISLAND RESORT BAR & GRILL        | 48. PHILLIPS LAKES              | 61. JC'S NORTH OF 7                     | 70. NORTHWOOD SUPPER CLUB                |
| 10. THE LAKES/NORTHERN LIGHTS INN | 23. WINTERGREEN LAKE RESORT      | 36. HICKORY COVE RESORT                    | 49. TRAILSIDE BAR & GRILL       | 71. CROSSING POINT CAFE                 | 71. JONAS O'S BAR, LLC                   |
| 11. OK CORRAL                     | 24. FIFIELD STATION (EXPRESSWAY) | 37. JAMISON'S BOSSMAN'S SPORTS BAR & GRILL | 50. KIM'S 3 MILE BAR & GRILL    | 61. KODAK ENTERPRISE TOW & RECOVERY LLC | 72. PENNINGTON PINES RESORT & CAMPGROUND |
| 12. KWIK TRIP PARK FALLS          | 25. KOUNTRY KAFE & BAR           | 38. SANDTRAP BAR & GRILL                   | 51. COMFORT COVE RESORT         |   | 73. WOY'S PUB                            |
| 13. PARK FALLS BP                 | 26. 9 MILE TAVERN                |  |                                 |   |  |



The represented clubs request your patronizing of our sponsors. Watch for our sign on their establishments.

Snowmobile operators. Be Safe, never travel alone. The Price County Snowmobile Trails Association and private land owners assume no liability as to trails, machines or individuals. Please respect private and no trespassing signs. Do not operate snowmobiles on highways. Use extreme caution on lakes and streams. Obey all state laws and local ordinances. Speeding on the trail is extremely dangerous to you and to others. Remember to travel the trails in a safe and sane manner. Be prepared to stop. Happy Snowmobiling.

Thank Our Volunteers & Sponsors.



**NOTICE**  
STAY ON TRAILS  
\$100 REWARD

FOR INFORMATION LEADING TO THE ARREST AND CONVICTION OF ANYONE DOING PROPERTY DAMAGE ON THESE TRAILS INCLUDING DESTRUCTION OF BONES, ETC.

Price County Snowmobile Trails Assn., Inc.

**Please Refer to Price County Trail Map for Updated Trails**

- THE PRICE COUNTY SNOWMOBILE TRAILS ASSOC. PROMOTES SAFE SNOWMOBILE AND CROSSCOUNTRY SNOWMOBILE USE BY:
1. NOT EXCEEDING 10 MPH ON WOODS TRAILS
  2. NOT EXCEEDING 15 MPH ON OPEN TRAILS
  3. REMOVING SPEED LIMIT SIGNS, SIGNPOSTS AND TRAIL MARKS
  4. REMOVING SPEED LIMIT TRAIL SIGNPOSTS IN BAD WEATHER
  5. NOT DRIVING AT ALL WHILE INTOXICATED

Price County Snowmobile Trails Assn., Inc.  
P.O. Box 26 | Phillips, WI 54555  
Snowmobile Trail Information: 1-800-269-4505 | www.awsc.org/Price.html

CORRIDOR TRAILS	CLUB, COUNTY, FEDERAL & STATE TRAILS	INTERSECTION
WARMING HOUSE	ADVERTISER LOCATION	ADVERTISER LOCATION WITH GAS AVAILABLE





# SHOPPING



**THE 5 SENSES**

LOCATED UNDER THE PHILLIPS WATER TOWER

146 Balsam St. Phillips, WI  
Open Tues. - Sat. 10am-4pm  
(715) 339-2777  
www.the5senseswi.com

The 5 Senses LLC

**Welcome to The 5 Senses**

Located in a restored 1920's fire station, we specialize in gourmet cookware, kitchen tools & cutlery, specialty foods, a unique wine selection, seasonal decor, jewelry, artwork, books & children's toys, and more!



OPEN DAILY OR ONLINE SHOPPING 24/7

Shop our selection of...

- WALL ART
- SEASONAL DÉCOR
- CHILDREN'S TOYS & BOOKS
- OUTDOOR FURNITURE
- SPECIALTY FOODS & TREATS
- WISCONSIN ITEMS
- SWEATSHIRTS/T-SHIRTS/SOCKS
- AMISH LOG FURNITURE

**UNIQUE GIFTS FOR ALL AGES!**

**Cabin Creations** N8051 State Hwy 13 Phillips, WI  
cabincreationswi.com 715-339-6238

**PRICE COUNTY ANTIQUE ASSOCIATION, LTD.**

**17TH ANNUAL ANTIQUE & TRACTOR EXPO & CAR SHOW**

Saturday: Antique Tractor Pull w/eliminator & DJ  
Sunday: Car Show & DJ

FOOD, BEVERAGES, CHILDREN'S ACTIVITIES, RAFFLES, TRACTOR PARADE ON SATURDAY & MORE!

Display, demo, sell your antiques, crafts, etc. - FREE

FOR MORE INFO: Steve: 715-339-3652 or Maureen: 715-339-2254  
TRACTOR PULL: John: 715-482-9248 or Lynn: 715-474-6707  
CAR SHOW: Tammie: 715-760-0031

www.pricecountyantiqueassociation.org

**July 19-20, 2025 • 9 am**  
Price County Fairgrounds, Phillips, WI  
Admission button - donation

*A Must See Destination of the Northwoods since 1888!*

OUTDOOR GEAR • GUNS • AMMO • ARCHERY • FISHING • BOOTS  
RUSTIC DECOR • LOG FURNITURE by Burnt Elk Log Decor

*Bringing You the Best Customer Service the Northwoods has to Offer!*

262 South Lake Avenue • Phillips, WI 54555 • Phone: 715-339-GUNS (4867)  
Email: badersstore@gmail.com • www.baderssportscenter.com





# FOOD & DRINK

## *Looking for a great place for breakfast, lunch, dinner or just a snack?*

Price County has many choices! Everyone's favorite burgers and pizza, delicious "Specialties of the House" and regional ethnic foods are only part of Price County's wide variety of restaurants, cafes, and taverns that offer many delicious treats. You can choose to dine outside with a stunning lake view. In-own establishments are a welcome break when shopping. Snowmobilers, ATV and UTV riders will also find many friendly taverns on or near the trails...a welcome break from the cold or dust!



### **A&W**

715-339-3104 • Hwy. 13 North, Phillips, WI 54555

Open 7 days a week. 10:30am–10pm 4 Burgers, chicken sandwich, chicken strips, fries, onion rings, cheese curds, coney dogs & nuggets, Kids menu, cones, shakes, floats & sundaes. Handcrafted root beer daily, large parking area, on Hwy. 13, snowmobile accessible.

### **BOBBERS ON THE LAKE**

715-769-3333 • 11633 Lakeview Drive, Butternut, WI 54514

Burgers, hot sandwiches, pizza, baskets, salads, fish fries.

### **DOUBLE D'S PUB & PIZZA**

715-769-3509 • 109 2nd St. Butternut, WI 54514

Burgers, hot sandwiches, fish fries, tacos, pizza, soup, salad bar.

### **MERRI CASSIDY'S SALOON**

715-769-2815 • N14023 W Central Ave, Fifield, WI 54524

### **PHILLIPS CAFÉ & CATERING**

715-339-3232 • 167 N Lake Ave, Phillips, WI 54555

Open at 5am, Mon til 2pm, Tue-Thur til 7pm, Fri til 8pm, Sat til 7pm, Sun til 2pm

Daily specials, Friday fish fry w/full salad bar, homemade soups & pies, sandwiches, burgers, Sat. broasted chicken, breakfast anytime Good home cooking, reasonable prices, catering for all occasions—large & small groups, snowmobile & ATV accessible FB: Phillips Café & Catering







# Phillips Café & Catering

Featuring Picnic Style  
Two Meat Buffet Style  
Dinners

**"Good Home Cooking at Reasonable Prices"**

- Breakfast, Lunch & Dinner  
7 Days A Week
- Friday Fish Fry with  
Full Salad Bar

715-339-3232  
Serving within an 80-mile radius  
167 N. Lake Ave., Phillips, WI

715.769.3333

BOBBI MASTERSON  
PROPRIETOR

11633 LAKEVIEW DRIVE • BUTTERNUT, WISCONSIN 54514

MERRI CASSIDY  
Owner / Mixologist

# MERRI CASSIDY'S SALOON

GROCERIES

P.O. BOX 13  
N14023 W. CENTRAL VE.  
FIFIELD, WI 5454  
715.762.2815

**"Where you come for one & stay till two!"**

# Double D's Pub & Pizza

Butternut, Wisconsin

Specialty Pizzas  
Tacos  
Taco Pizzas  
Loaded Nachos  
Wraps  
Salad Bar  
Homemade Soups  
Malts & Shakes

109 2nd Street (715) 769-3509  
doubleds2020@yahoo.com

Kitchen Hours:  
Monday Closed  
Tues-Sat 11am-9pm  
Sun 11am-6pm • Bar Open 11am

Full Bar  
Buffets  
Daily Specials  
Dine In  
Take Out  
Parties Welcome  
Book the Dining Room  
or the Food Truck

**We Cater to Your Great Taste**

# ALL AMERICAN FOOD™

Highway 13 North Phillips, WI 54555

**"A Great Place to Hang Out"**

**Drive-thru now open!**

715-339-3104

Hours  
7 days per week  
10:30 am - 10:00pm

Like us on Facebook

**DOWNLOAD  
THE TWL  
APP!**



**PCTL  
BIG TICKET  
DRAWING!  
Win Big Money!  
1st Monday  
in June**

## WinterFest Tavern League Tour January 8th–26th, 2025

Please patronize those establishments displaying our Tavern League Member Signs.

American Legion Post 182  
Ape Hangers Salon & Grub  
Big Bear Lodge  
Bobber's on the Lake  
Burgers Bar & Grill  
Butternut Community Park  
Captain Nemo's Pub & Grub LLC  
Chuck's Little Station  
Corner Connection  
Crane Chase Tavern  
Double D's (Butternut)  
Flambeau Forest Inn  
Flyway Resort  
Frank & Michael Baran VFW Post  
Fusak's Tavern  
Goebel's South Fork  
Harbor View  
Idle Hour Resort  
Jack's Corner Bar  
JOBO's  
John's 3 Mile Bar & Grill  
Kountry Kafe & Katering LLC  
Maple Grove Tavern  
Meisters  
Merri Cassidy's  
Midway Tavern & Cabins  
MT Pockets

Musky Jacks  
Northern Lights Tavern  
OK Corral  
Park Falls County Club  
Phillips Cenex  
Phillips Lanes & Arcade  
Prentice Market & Deli  
Prentice Volunteer Fire Department  
Raab's Extra Innings  
Ridge Runners  
Rip Saw Saloon  
Rock Garden Tavern  
Sailors II  
Sassy & Wisco's Iron Coach  
Soo Lake Bar & Grill  
Sunset Lake House  
Sunset Haven Resort  
Tailgators  
The Badger's Den  
The Big Dipper  
The Lanes in Park Falls  
Timbers Roadhouse  
Totem Pole Liquor LLC  
Trail Side Bar & Grill  
Vichy's Pub  
Westwood Golf Course / Sandtrap Bar & Grill  
Woods Edge Restaurant at Moose Jaw Resort

Thank you to our Associate Members

A&W Restaurant, Makovsky Brush Service, Industrial Air Products, Do it Best, Warga Truck & Auto, Phillips Cafe, Ross's Sport Shop, Indian Head Food Distribution, Shilling Electric, Merrill Distributing, Bader's Sports Center, Precour Chiropractic, IMR, Dale Garczynski

For more information, please contact Tavern League of Wisconsin—Price County







# LODGING



## Hidden Cove

Long Lake • Phillips, WI

### FOUR SEASON RESORT

Offering 5 fully furnished cabins, lake house, pontoon, & fishing boat rentals

- Pet friendly
  - Fasta WIFI
  - Streaming TV
  - AC/Furnace
  - Charcoal grills
  - Picnic tables
  - Fire pits
  - Fish house
- Only 1 mile from downtown

Book Online  
@ [www.hiddencoveresort.com](http://www.hiddencoveresort.com)

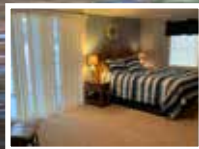
715.820.3881

[www.hiddencoveresort.com](http://www.hiddencoveresort.com)



## Harbor Lake House

Phillips, Wi



### 3 bed, 1 bath, house right on Long Lake of the Phillips Chain of Lakes

- Within 2 miles of the downtown and the golf course.
- Winter has direct access to the snowmobile trail.
- Available for rent year round
- Weekly rentals from Memorial Day to Labor Day.

715-492-1507 or Look for us on vrbo.





# LODGING



		All Year	Food	Bar	Snow/ATV Trails	WIFI	Credit	Pets
<b>AmeriVu Inn-Park Falls</b> 1212 State Hwy 13, Park Falls, WI 54552 715-762-3383 www.amerivuin.com/parkfalls	Free continental breakfast, free wireless high-speed internet, fridge, coffeemaker, cable TV	☑			☑	☑	☑	☑
<b>Butternut Lake Lodge</b> N16517 Lakeshore Drive Butternut, WI 54514 (715) 972-3760 www.butternutlakelodge.net	5 Units   Butternut Lake   Luxury accommodations up to 28 people. Main lodge and 4 suites. Fireplaces, 4k TVs, king beds. Pier, boathouse with sunset deck, firepits, volleyball, horseshoes, canoes, gas grills, patios, laundry. Of adding A/C and kayaks.	☑			☑	☑	☑	
<b>Edgewater Retreat</b> N9155 Elk River Rd., Phillips, WI 54555 262-210-1550 facebook.com/EdgewaterRetreatSootLake	1 Unit   Newly renovated lake home, 6 guests, 3 bedrooms, 2.5 baths, private pier, trailer parking	☑			☑	☑	☑	
<b>Harbor Lake House</b> 125 County Road F Phillips, WI 54555 715-492-1507 www.vrbo.com/3024130	1 Unit   Long Lake, Phillips Chain of Lakes   Enjoy the Northwoods in this lakeside cottage with a picturesque view of Long Lake	☑	☑	☑	☑	☑	☑	☑
<b>Hidden Cove Resort</b> W7396 S. Long Lake Rd. Phillips, WI 54555 715-820-3881 www.hiddencoveresort.com	6 Units   Long Lake, Phillips Chain of Lakes   Family friendly resort offering 5 fully furnished vintage cabins & a luxurious lake house in an idyllic lakeside setting. Aluminum row boat & pedal boat included. Pontoon, fishing boat & motors for rent.	☑			☑	☑	☑	☑
<b>Northwoods Property Management, LLC</b> (UpNorthVacationLodging.com) 187 N Lake Ave 886 4th Ave (Park Falls) Phillips, WI 715-339-4663 www.UpNorthVacationLodging.com	The area's largest lodging marketplace. We have a mix of traditional lodging, moderate homes, and luxury stays.	☑	☑	☑	☑	☑	☑	☑
<b>Red Pines Resort &amp; Suites</b> 850 Elk Lake Drive Phillips, WI 54555 715-339-4333 www.redpines.com	5 Units   Elk Lake Phillips Chain of Lakes   2 and 3 bedroom condos	☑			☑	☑	☑	☑
<b>Reese's Resort</b> W7510 Point Road Phillips, WI 54555 715-339-3158 www.reesesresort.com	4 Units   Wilson Lake Phillis Chain of Lakes   Clean, modern & fully-equipped cabins; swimming, hunting, fishing, boating/landing nearby, park-like setting, playground, hiking trails, rec building w/fireplace, lots of activities for kids. 2.5 miles to Phillips.				☑	☑		☑
<b>Rock Garden Tavern/Vacation Rental</b> N8220 Hwy 13 Phillips, WI 54555 715-339-3350 (715) 339-7282 www.airbnb.com/rooms/34708087	1 Unit   Stay at the Historic Wisconsin Concrete Park! Cozy 2 BR apartment for 6 guests	☑			☑	☑	☑	
<b>Thunderhead Lodge, LLC</b> W9011 Fern Drive Butternut, WI 54514 715-762-3291 www.thunderheadlodgeandcabins.com	6 Units   Butternut Lake   Fully furnished for up to 31 people. Main lodge & 5 cabins. Boat launch, docks, boat house. Row & paddle boats inc. Beach, picnic area, firepits w/wood provided, 20 acres of woods and trails. Starlink provided	☑			☑	☑	☑	☑

**Butternut Lake LODGE**

*Your authentic Northwoods experience. Elevated.*

[www.ButternutLakeLodge.net](http://www.ButternutLakeLodge.net)

Open year-round • Accommodations for up to 28 guests

**Butternut Lake LODGE**  
N16517 Lakeshore Drive  
Butternut, WI 54514  
(715) 972-3760



# REESE'S RESORT

*A Family Resort Since 1955*

reesesresort.com

Sarah & Dennis Socha

W7510 Point Road  
Phillips, WI 54555  
715.339.3158



*On Wilson Lake of the Phillips Chain of Lakes*



## Your perfect up-north getaway with all the comforts of home on beautiful Soo Lake.

- Fully Furnished / Open Year Round
- 3 Queen Beds / Sleeps 6 / 2.5 Baths
- Ample Trailer Parking
- Fiber Optic Internet / Smart Tv's
- Handicap Ramp Access Main Floor
- Private Pier / Boat Launch Less Than 1/4 Mile
- Direct ATV/UTV / Snowmobile Trail Access (Trail 82/88)
- N9155 Elk River Rd. • Phillips, WI 54555

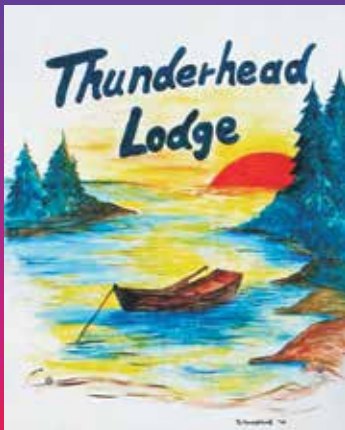


262-210-1550

edgewaterenterprisesllc@yahoo.com

facebook.com/EdgewaterRetreatSooLake

# Thunderhead Lodge LLC



Accommodations for 31 people on the eastern shore of beautiful **Butternut Lake**

W9011 Fern Drive  
Butternut, Wisconsin

www.Thunderheadlodgeandcabins.com

For reservations call

**715-762-3291**



# Red Pines Resort & Suites

2 & 3 Bedroom Condos - Full Kitchens  
On ATV Trails - Electric Fireplaces  
Air Conditioning - Pets Welcome  
High Speed Internet

850 Elk Lake Dr - Phillips, WI 54555  
(715) 339-4333

www.redpines.com

*Service and Quality*



UP NORTH VACATION LODGING  
STAY IN THE NORTHWOODS





# SERVICES



## Heindl-Nimsgern Funeral & Cremation Services - Phillips



284 Chestnut Street  
Phillips, WI 54555  
(715) 339-3213

Krueger-Nimsgern Funeral & Cremation Services - Tomahawk  
(715) 453-3808

Nimsgern Funeral & Cremation Services - Woodruff  
(715) 439-4100

[www.nimsgernfuneral.com](http://www.nimsgernfuneral.com)

## Phillips Veterinary Clinic



Large & Small Animal Services

M-F 7:30-5:00  
Limited Saturdays 7:30-Noon

W6891 Liberty Lane  
Phillips, WI 54555

**715-339-2605**

Visit Our Online Stores

[www.phillipsvetclinic.com](http://www.phillipsvetclinic.com)



Emergency Services Available



Community  
Technology Centers



**24/7 WIFI  
ACCESS  
AVAILABLE  
IN PARKING  
LOTS**

Access **FREE high-speed internet** at NTC's Antigo and Phillips campuses. These spaces feature internet cafes, private offices and remote worker spaces.

To learn more, visit:  
[www.ntc.edu/technologycenters](http://www.ntc.edu/technologycenters)



SCAN ME

NTC Antigo | 715.623.7601  
NTC Phillips | 715.339.4555

## CNR Powersports & SMALL ENGINE

CNR Powersports is the area's only factory authorized warranty service center for many equipment brands. CNR will get your ATV, SxS, lawn equip, and more back in action! Located right off the Tuscobia Trail.

**AUTHORIZED WARRANTY REPAIR**  
GENERAC • DR • Massimo and Firman Power Equipment

**YOUR LOCAL PARTS DEALER**  
EPS • EPI • Automatic Distributors  
RMStator • Oscar Wilson • Celtric  
Quad Logic



(608) 228-7223 • N15570 ASH ST. • PARK FALLS





# ANDERSON'S BODY SHOP

Auto & Truck Repair • Painting  
Glass Installation • Insurance Work  
Free Estimates • Loaner Cars

**715-339-3503**

W6770 County Rd. H • Phillips, WI 54555  
andersnbdyshop@pctcnet.net



715-339-2155

W6803 Springs Drive, Phillips, WI 54555

## GENERAC

YOUR ENERGY SOLUTIONS COOPERATIVE

# FRIEZE firewood

### FIREWOOD SALES

Residential • Commercial • Wholesale  
Firewood Storage & Handling

### CUSTOM DOCKS FROM DESIGN TO INSTALL

Docks & Lift Sales & Service • Boat Storage & Transportation

W6830 Little Chicago Rd • Phillips, WI 54555  
715-567-0616 • friezefirewood11@gmail.com



*"The Area's Leading Realtors"*

- Shop where Selection and Service is Best •
- Free Area Map •
- Check Out Our Website—Updated Daily •

**[www.birchlandrealty.com](http://www.birchlandrealty.com)**

Hwy. 13 So., P.O. Box 388,  
Park Falls, WI 54552

Hwy. 13 So., P.O. Box 25,  
Phillips, WI 54555

**715.762.3276**

**715.339.2181**

Hwy. 70, P.O. Box 475, Winter, WI 54896

**715.266.2203**



# AC CARPET Plus LLC

## Carpet - Vinyl - Laminate - Tile - Hardwood

### Huge Selection of Stock Inventory

# "We Are Your Floor Store!"

- ✓ Beautiful Flooring Options & Window Treatments!
- ✓ Professional Installation & Exceptional Customer Service
- ✓ **FREE** Measurements & Estimates



**[www.accarpetplus.com](http://www.accarpetplus.com)**

**715-762-1032**

N14042 Hwy. 13  
Fifield, Wisconsin

Like us on  
for current  
promotions!



# Price County has Airports!

Price County Airport is a county owned public airport located one mile northwest of Phillips, in Price County, Wisconsin.

**PRICE COUNTY AIRPORT (PBH)** is a corporate / transport type rated airport with two runways. The airport is located north of town within the city limits of Phillips, Wisconsin. The airport adjoins the Phillips Industrial Park and is within one mile of Phillips' newest Industrial Park. The airport is open and attended year-round. 715-339-3701 or 715-820-0098.

**PARK FALLS MUNICIPAL AIRPORT** is located two miles northeast of the city. The airport handles approximately 6,750 operations per year, with roughly 97% general aviation and 3% air taxi. The airport has a 3,200 foot asphalt runway with approved GPS approaches. 7198 Airport Rd, Park Falls, Wisconsin · (715) 762-2436

**PRENTICE AIRPORT** is a public use airport located one nautical mile (2 km) east of the central business district of Prentice, a village in the town of Prentice, Price County, Wisconsin. It is owned by the village of Prentice. Air Park Dr, Prentice, WI 715-360-2000

**TEAM**  
AND SONS  
WELL DRILLING LLC  
715.767.5166 ♦ OGEMA ♦ PHILLIPS

LET US TAKE CARE OF  
YOUR WATER NEEDS

## OUR SERVICES

- ♦ WELL DRILLING
- ♦ WATER SYSTEM
- ♦ WELL AND PUMP SERVICE
- ♦ HYDROFRACKING
- ♦ INSTALLATION
- ♦ WELL ABANDONMENT

CALL US: 715-767-5166 OR 715-657-0792

EMAIL US: [TEAMWELLDILLING@OUTLOOK.COM](mailto:TEAMWELLDILLING@OUTLOOK.COM)

SERVICE AREA SERVING NORTH CENTRAL WISCONSIN.

CONTACT US FOR EXTENDED AREAS.

[WWW.TEAMWELLDILLING.COM](http://WWW.TEAMWELLDILLING.COM)



For all your Hunting  
and Fishing needs!

License · Archery Pro Shop  
Tackle · Live Bait

Check out our online store at [rossonline.com](http://rossonline.com)

286 North Lake Avenue · Phillips, WI 54555 · Email: [Rossport@pctcnet.net](mailto:Rossport@pctcnet.net) · 715-339-3625



**ROSS'S SPORT SHOP**  
**MUSKY FISHING**  
Guide Service

Fish with the area's top guides in the heart of northern Wisconsin musky country! 100+ combined years fishing north central Wisconsin waters, Smallmouth, largemouth, panfish and walleye trips also available

286 North Lake Ave · Phillips, WI 54555  
715-339-3625 · [rossport@pctcnet.net](mailto:rossport@pctcnet.net)  
[www.rossonline.com](http://www.rossonline.com)







# WORSHIP

## **ANCHOR OF TRUTH CHURCH**

114 N Avon Ave  
Phillips WI 54555  
715-339-2487

## **BETHANY LUTHERAN**

W9490 Highway 8  
Catawba, WI 54515  
715-585-2303

## **CHRIST THE SERVANT LUTHERAN**

1185 S. 4th Ave.  
Park Falls, WI 54552  
715-762-4107

## **CORNERSTONE COMMUNITY**

Phillips, WI 54555  
715-339-4020

## **EVANGELICAL COVENANT**

335 S. 5th Ave.  
Park Falls, WI 54552  
715-762-4732

## **FAITH APOSTOLIC**

## **UNITED PENTECOSTAL**

863 S. 9th Ave.  
Park Falls, WI 54552  
715-792-2885

## **FAMILY WORSHIP CENTER**

7326 Boyer Road  
Park Falls, WI 54552  
715-762-4197

## **FIFIELD CONGREGATIONAL**

Fifield, WI 54524  
715-762-3220

## **FIRST BAPTIST**

Phillips, WI 54555  
715-339-3433

## **FIRST BAPTIST**

757 Cherry St.  
Prentice, WI 54556  
715-428-2570

## **FIRST CONGREGATIONAL**

279 1st Ave. N.  
Park Falls, WI 54552  
715-762-3826

## **FIRST LUTHERAN**

W9450 Highway 86  
Ogema, WI 54459  
715-767-5155

## **FIRST LUTHERAN**

670 Main St.  
Prentice, WI 54552  
715-728-2575

## **FIRST PRESBYTERIAN**

144 N. Avon Ave.  
Phillips, WI 54555  
715-339-2234

## **JEHOVAH'S WITNESSES**

N9346 Highway 13  
Phillips, WI 54555  
715-339-4240

## **MARANTHA BAPTIST**

Highway 13 and Old 13  
Phillips, WI 54555  
715-339-2620

## **NEW BEGINNING LUTHERAN CHURCH**

1223 Railroad Ave.  
Prentice, WI 54556  
715-564-4800

## **NEW HOPE BAPTIST**

Kennan, WI 54537  
715-474-2212

## **OGEMA BAPTIST**

W5091 Hwy. 86  
Ogema, WI 54459  
715-767-5157

## **OUR SAVIOR'S EPISCOPAL**

Lugerville, WI 54555  
715-339-2658

## **OUR SAVIOR EV LUTHERAN**

N8353 State Highway 13  
Phillips, WI 54555  
715-339-6766

## **PEACE LUTHERAN**

600 2nd Ave. N  
Park Falls, WI 54552  
715-792-4541

## **SPIRIT BAPTIST**

W1608 State Highway 86  
Ogema, WI 54459  
715-564-2205

## **ST. JOHN LUTHERAN CHURCH**

120 Forest Ave  
Phillips, WI 54555  
715-339-2711

## **ST. ANTHONY CATHOLIC**

276 S. 5th Ave.  
Park Falls, WI 54552  
715-762-4494

## **ST. FRANCIS CATHOLIC**

Prentice, WI 54552  
715-792-4494

## **ST. JOHN CATHOLIC**

935 Town St.  
Prentice, WI 54552  
715-339-2222

## **ST. PAUL CATHOLIC**

W9485 Highway 8  
Catawba, WI 54515  
715-339-2222

## **ST. THERESE CATHOLIC**

655 S. Lake Ave.  
Phillips, WI 54555  
715-339-2222

## **TRINITY LUTHERAN**

103 Trinity Drive  
Phillips, WI 54555  
715-339-3495

## **TRINITY LUTHERAN**

W4594 Highway 8  
Prentice, WI 54556  
715-428-2851

## **UNITED METHODIST**

115 Center Ave.  
Phillips, WI 54555  
715-339-3120

## **VICTORY CHRISTIAN CENTER**

W6880 Liberty Lane  
Phillips, WI 54555  
715-339-7111

## **WORD OF LIFE**

105 Fairway Drive  
Phillips, WI 54555  
715-339-2207

## **ZION EV LUTHERAN**

N8975 S. German  
Settlement Road  
Ogema, WI 54459  
715-427-5209

## **ZION EV LUTHERAN CHURCH**

W10363 Main St.  
Kennan, WI 54537  
715-474-5209



# CHAMBER MEMBER DIRECTORY

## ADVERTISING

### 5 STAR MARKETING & DISTRIBUTION

409 South Park Dr.  
Tomahawk, WI 54487  
(715) 453-4511  
www.5starupnorth.com

### CIVIC MEDIA

1329 S. 4th Ave  
Park Falls, WI 54552  
(715) 762-3221  
https://98qcountry.com/

### NORTHLAND TELEVISION, LLC

**WJFW-CHANNEL 12**  
3217 County RDG  
Rhineland, WI 54501  
(715) 365-8812  
www.wjfw.com

### PLATYPUS ADVERTISING + DESIGN

W9389 River Glen Road  
Park Falls, WI 54552  
(414) 881-9066  
www.platypus-ad.com/

### PRICE COUNTY REVIEW

**APG MEDIA**  
105 N. Lake Ave.  
Phillips, WI 54555  
(715) 718-4690  
apg-wi.com/price\_county\_review/

### SCHILLING 4 LLC

W6880 Tower Ln  
Phillips, WI 54555  
(715) 492-4370

### WIMI - THE STORM

**(J & J BROADCASTING, INC.)**  
Tower location is Hwy 13  
Fifield, WI 54524  
(715) 372-5151  
wimifm.com

### ZENBUSINESS

5511 Parkercrest Drive, Suite 103  
Austin, TX 78731  
(844) 493-6249  
www.zenbusiness.com/

## ANIMAL SUPPLIES, SERVICES & VETERINARY CARE

### CATKINS ANIMAL RESCUE, INC.

N15262 Oak Rd  
Park Falls, WI 54552  
(715) 762-0122  
www.catkinsanimalrescue.org

### KB EQUINE SERVICES

W5824 Springs Drive  
Phillips, WI 54555  
(715) 661-1604

### NORTH COUNTRY VETERINARY CLINIC & 4 PAWS PET RESORT

W6880 Hilly Haven Lane  
Phillips, WI 54555  
(715) 339-6777  
www.northcountryvetclinic.com

### PHILLIPS VETERINARY CLINIC

W6891 Liberty Lane  
Phillips, WI 54555  
(715) 339-2605  
www.phillipsvetclinic.com

## ARTS, CULTURE & ENTERTAINMENT

### FRIENDS OF FRED SMITH

N8236 Hwy 13 S  
Phillips, WI 54555  
(715) 339-7282  
www.friendsoffredsmith.org/

### JUMP RIVER VALLEY HISTORICAL SOCIETY

W9224 U.S. Hwy. 8  
Catawba, WI 54515  
(715) 339-3761

### LAKE OF THE TORCHES RESORT AND CASINO

510 Old Abe Rd  
Lac Du Flambeau, WI 54538  
(715) 588-7070  
www.lakeofthetorches.com

### NORTHWOODS PLAYERS, LTD

1311 Ridgewood Circle  
Phillips, WI 54555  
(715) 492-0468  
www.northwoodsplayers.com

### PARK FALLS PUBLIC LIBRARY

121 4th Avenue  
Park Falls, WI 54552  
(715) 762-3121  
https://parkfallslibrary.org/

### PARK FALLS RECREATION ARENA

301 N 3rd Ave  
Park Falls, WI 54552  
(715) 820-1331  
www.parkfallsarena.com

### PHILLIPS CHILDREN'S MUSEUM INC.

W2998 County Road D  
Phillips, WI 54555  
(715) 820-2767  
phillipschildrensmuseum.com/

### PHILLIPS CZECH-SLOVAK COMMUNITY FESTIVAL

W3196 County Rd D  
Phillips, WI 54555  
(715) 339-2623  
www.czech-slovak-festival.com/

### PHILLIPS PUBLIC LIBRARY

286 Cherry St  
Phillips, WI 54555  
(715) 339-2868  
phillipspl.org/

### PRICE COUNTY ANTIQUE ASSOCIATION LTD

N9525 Elderwood Road  
Phillips, WI 54555  
(715) 339-6987  
www.pricecountyantiqueassociation.org

### PRICE COUNTY HISTORICAL SOCIETY INC.

W7213 Pine Street  
Fifield, WI 54524  
(715) 339-2415  
www.pricecountyhistoricalsociety.org

### PRICE COUNTY PRCA RODEO

PO Box 102  
Phillips, WI 54555  
(715) 661-2590  
www.pricecountyrodeo.com

### SEVENWINDS CASINO LODGE AND CONFERENCE CENTER

13767W Cnty Rd B  
Hayward, WI 54843  
(833) 479-4637  
www.sevenwindscasino.com

## ASSOCIATIONS, CLUBS & ORGANIZATIONS

### AMERICAN LEGION POST 182

274 North 3rd Ave  
Park Falls, WI 54552  
(715) 762-3032  
www.facebook.com/American-Legion-Post-182-Park-Falls-197142033652059/

### BUTTERNUT/SCHNUR LAKE ASSOCIATION

P.O. Box 245  
Park Falls, WI 54552  
(715) 518-5612

### FLAMBEAU RIDERS UTV/ATV CLUB

W8143 Maple Ridge Rd  
Park Falls, WI 54552  
(906) 285-0819

### HEALING PATRIOTS

W10928 Lakepoint Dr  
Lodi, WI 53555  
(608) 335-5442  
www.healingpatriots.org/

### LOGGERS UNITED BOOSTER CLUB

W7151 Pine Forest Rd  
Phillips, WI 54555  
(715) 820-1336  
www.phillips.k12.wi.us

### LUGERVILLE SCHOOL, SAVE THE LUGERVILLE SCHOOL/COMMUNITY CENTER COMMITTEE

N11127 County Road F  
Phillips, WI 54555  
(715) 339-2254

### MERCER LOONS MC

Po Box 183  
Mercer, WI 54547  
(906) 285-0870  
mercerloons.org

### NORTHWOODS CLASSICS CAR CLUB

(715) 492-2654

### PARK FALLS KNIGHTS OF COLUMBUS

Park Falls, WI 54552  
(715) 661-1156

### PARK FALLS LIONS CLUB

P.O. Box 188  
Park Falls, WI 54552  
(715) 762-2171

### PHILLIPS CHAIN O'LAKES ASSOC.

885 Elk Lake Drive  
Phillips, WI 54555  
phillipschain.org/

### PHILLIPS LIONS CLUB

N11099 County Rd F  
Phillips, WI 54555  
(715) 492-7221

### PHILLIPS MOOSE LODGE 2661

N9394 Old 13 Rd  
Phillips, WI 54555  
(715) 339-2909

### PRICE COUNTY

126 Cherry Street  
Phillips, WI 54555  
715-339-5138

### PRICE COUNTY FAIR ASSOCIATION

N9130 Forest Lane  
Phillips, WI 54555  
(715) 965-2532  
www.pricecountyfair.com/

### PRICE COUNTY RESPECT LIFE

N10593 Bay View Lane  
Phillips, WI 54555  
(715) 339-4632  
pricecountyrespectlife.weebly.com/



## PRICE COUNTY TAVERN LEAGUE

P.O. Box 84  
Phillips, WI 54555  
(715) 339-3456  
www.pctlw.org

## RED APPLE CENTER

598 Peterson Dr.  
Phillips, WI 54555  
(715) 339-3966  
www.theredapplecenter.net

## SOCIETY OF ST. VINCENT DE PAUL

134 S Avon Ave  
Phillips, WI 54555  
(715) 339-6992  
sttheresePhillips.weebly.com/st-  
vincent-de-paul.html

## SNO-GYPSIES SNOWMOBILE CLUB

PO Box 231  
Park Falls, WI 54552  
(715) 661-0922

## SOLBERG LAKE ASSOCIATION

N10959 E Solberg Lake Road  
Phillips, WI 54555

## SOO LAKE UNITED ASSOCIATION

W9619 County Road S  
Phillips, WI 54555  
(715) 332-5628  
www.soolakeassociation.com

## TRAIL MIDGETS ATV CLUB

89281 County Road F  
Butternut, WI 54514  
(715) 769-3680  
trailmidgetsATV.org

## TURTLE FLAMBEAU FLOWAGE ASSOCIATION

Butternut, WI 54514  
www.turtleflambeauflowage.com

## VFW POST #5778—

### FRANK & MICHAEL BARAN

306 S Lake Ave  
Phillips, WI 54555  
(715) 339-2959

## WOODS & WATERS FINE ARTS COUNCIL

N16872 N River Rd (Lucy)  
Park Falls, WI 54552  
(715) 762-3145  
www.woodsandwatersarts.org

## AUTOMOTIVE/ MARINE

### ANDERSON'S BODY SHOP LLC

W6770 County Rd H  
Phillips, WI 54555  
(715) 339-3503

### GLASS TO GO, INC

894 N Lake Ave  
Phillips, WI 54555  
(715) 339-6400  
www.glasstogopros.com

### HAMMERSTROM AUTO BODY, LLC

1200 4th Ave S  
Park Falls, WI 54552  
(715) 762-1170

## JOE'S AUTO GLASS LLC

128 N 4th Ave  
Park Falls, WI 54552  
(715) 762-3936

## PHILLIPS SERVICE CENTER

515 S. Lake Ave  
Phillips, WI 54555  
(715) 339-3655  
www.phillipsservicecenter.com

## WARGA TRUCK & AUTO CENTER INC.

N8454 State Hwy. 13 S  
Phillips, WI 54555  
(715) 339-3313  
www.wargaautoandtruckcenter.com/

## BEAUTY, SALONS, SPAS & MASSAGE

### DAHLIE THERAPEUTIC MASSAGE

183 S. Lake Ave  
Phillips, WI 54555  
(715) 853-9260  
www.dahliemassage.com/

### MARY KAY INDEPENDENT BEAUTY CONSULTANT—DEB METZKER

W7185 Hickory Lane  
Phillips, WI 54555  
(920) 222-9700  
www.marykay.com/dpaulineyoung

### MINDFUL MASSAGE

508 N Lake Ave  
Phillips, WI 54555  
(715) 820-1481

### VISIONS IN STYLING, LLC

174 S Lake Ave  
Phillips, WI 54555  
(715) 339-3322

## CAMPGROUNDS

### PRICE COUNTY FAIRGROUNDS

PO Box 102  
Phillips, WI 54555  
715-661-2590  
pricecountyproductions@outlook.com

## CHURCHES

### ANCHOR OF TRUTH CHURCH, INC.

114 N. Avon Ave.  
Phillips, WI 54555  
(715) 339-2487  
anchoroftruthchurch.com

### CHRIST THE SERVANT LUTHERAN CHURCH

1185 S 4th Ave  
Park Falls, WI 54552  
(715) 762-4107  
www.ctsluthern.net

### FAMILY WORSHIP CENTER

W7326 Boyer rd  
Park Falls, WI 54552  
(715) 762-4197  
www.fwcparkfalls.com

## OUR SAVIOR EVANGELICAL LUTHERAN CHURCH

N8353 State Hwy 13  
Phillips, WI 54555  
(715) 339-6766

## PEACE LUTHERAN CHURCH

598 2nd Ave N  
Park Falls, WI 54552  
(715) 762-4541  
peace2you.pctcnet.net

## SAINT JOHN LUTHERAN CHURCH

120 Forest Ave  
Phillips, WI 54555  
(715) 339-2711

## ST. ANTHONY OF PADUA CATHOLIC CHURCH

276 S. 5th Ave.  
Park Falls, WI 54552  
(715) 762-4494  
www.stanthonysparkfalls.com/

## TRINITY EV. LUTHERAN CHURCH

103 Trinity Drive  
Phillips, WI 54555  
(715) 339-3495

## VICTORY CHRISTIAN CENTER

W6880 Liberty Lane  
Phillips, WI 54555  
(715) 339-7111  
www.vccphillips.com

## CONTRACTORS

### FAR NORTH BUILDERS

798 4th Ave.  
Park Falls, WI 54552  
(715) 661-3156  
https://www.wisconsinhomesinc.com/

### JANAK & SONS, LLC

N7431 State Hwy 13  
Phillips, WI 54555  
715-820-3243 Brent  
www.janakandsons.com/

### JC BUILDERS

210 S Airport Rd  
Phillips, WI 54555  
(715) 339-4234  
www.jcbuilderswi.com/

### KLEINHANS & SONS, INC.

N10895 St. Hwy 13  
Phillips, WI 54555  
(715) 339-6286

### MORRISON CONSTRUCTION

W9061 Cty Rd W  
Phillips, WI 54555  
(715) 332-5172

### WAUSAU HOMES/WANKE BUILDERS—MEDFORD

N2256 ST HWY 13  
Medford, WI 54451  
(715) 748-3113  
www.wausauhomes.com

### WOODLAND CHASE LLC

w9228 State Hwy 70  
Park Falls, WI 54552  
(715) 339-2929  
www.woodlandchase.com

## EDUCATION

### CHEQUAMEGON SCHOOL DISTRICT

420 Ninth Street North  
Park Falls, WI 54552  
(715) 762-2474

### NORTHCENTRAL TECHNICAL COLLEGE

1408 Pine Ridge Rd  
Phillips, WI 54555  
(715) 348-7504  
www.ntc.edu

### SCHOOL DISTRICT OF PHILLIPS

365 Hwy 100  
Phillips, WI 54555  
(715) 339-2419  
www.phillips.k12.wi.us

## FINANCIAL, INSURANCE OR INVESTMENTS

### ASSOCIATED BANK

1156 4th Ave South  
Park Falls, WI 54552  
(715) 762-2421  
AssociatedBank.com

### B & B INSURANCE SERVICES, LLC

984 4th Ave S  
Park Falls, WI 54552  
(715) 246-4043  
www.MyBBInsurance.com

### BENEFIT SOLUTIONS OF WISCONSIN

170 North 4th Ave  
Park Falls, WI 54552  
(715) 762-4838

### FIDELITY INSURANCE AGENCY, INC.

925 Casement Ct  
Medford, WI 54451  
(715) 748-5331  
fidelityinsuranceagent.com

### FIORIO WEALTH ADVISORS

842 4th Ave South  
Park Falls, WI 54552  
(715) 762-3025  
fioriowealthadvisors.com

### FIRST NATIONAL INSURANCE

345 1st St N  
Park Falls, WI 54552  
(715) 762-2000  
https://stroufinsurance.com/  
locations/park-falls/

### FORWARD BANK

177 4th Ave S  
Park Falls, WI 54552  
(715) 762-2411  
https://www.forward.bank/

### FORWARD BANK

366 N. Lake Ave  
Phillips, WI 54555  
(715) 339-3223  
www.forward.bank/

**FORWARD INSURANCE**

172 N. Lake Avenue  
Phillips, WI 54555  
(715) 339-6511  
www.forward.bank/insurance

**FORWARD INSURANCE**

110 2nd. Ave  
Park Falls, WI 54552  
(715) 762-2497  
www.forward.bank/insurance

**FUHRMAN INSURANCE AGENCY**

119 2nd Ave. N.  
Park Falls, WI 54552  
(715) 762-4046  
www.insurancegroupwi.com

**FORWARD INVESTMENTS**

366 N. Lake Avenue  
Phillips, WI 54555  
(715) 339-6354  
www.forward.bank/investments/

**HIGHLAND MONEY MANAGEMENT**

594 S Lake Ave  
Phillips, WI 54555  
(715) 339-2744  
www.highlandmoneymgmt.com/

**MATHISON & OSWALD CPA**

174 N Avon Ave  
Phillips, WI 54555  
(715) 339-3091

**NORTHWOODS COMMUNITY CREDIT UNION**

1224 S. 4th Ave  
Park Falls, WI 54552  
(715) 762-3208  
www.northwoodscu.com

**PREVAIL BANK**

204 N Avon Ave  
Phillips, WI 54555  
(715) 339-2128  
www.prevail.bank

**SAVANT WEALTH MANAGEMENT**

886 4th Ave South  
Park Falls, WI 54552  
(715) 744-3131  
https://savantwealth.com

**STATE FARM INSURANCE**

1142 4th Ave S  
Park Falls, WI 54552  
(715) 762-3218  
https://www.dianaskawinski.com/

**WISCONSIN BENEFIT PLANNING**

9781 Hwy 70 W, PO Box 1089  
Minocqua, WI 54548  
(715) 356-2300  
www.wisconsinbenefits.com

**FUNERAL SERVICES****BIRCH STREET FUNERAL SERVICE**

350 Birch Street  
Park Falls, WI 54552  
(715) 762-3287  
birchstreetfuneralservice.com

**HEINDL-NIMSGERN FUNERAL & CREMATION SERVICES LLC**

284 Chestnut Street  
Phillips, WI 54555  
(715) 339-2313  
www.nimsgernfuneral.com/

**GAS & CONVENIENCE STORES****KWIK TRIP, INC. #1067**

1424 N. Lake Ave  
Phillips, WI 54555  
(715) 339-2595  
www.kwiktrip.com/

**KWIK TRIP**

1083 4th Ave South  
Park Falls, WI 54552  
(715) 762-1798  
www.kwiktrip.com

**MEDFORD COOPERATIVE, INC.**

PO Box 407  
Medford, WI 54451  
(715) 748-2056  
www.medfordcoop.com

**PARK FALLS BP**

1130 4th Ave. S.  
Park Falls, WI 54552  
(715) 762-2634

**HEALTH, MEDICAL & WELLNESS SERVICES****ASPIRUS MEDFORD HOSPITAL/CLINICS**

135 S. Gibson St.  
Medford, WI 54451  
(715) 748-8100  
www.aspirus.org

**AVANTI HOME CARE**

174 4th Ave S  
Park Falls, WI 54552  
(715) 744-1500

**EMBRACE, INC**

305 S Avon Ave  
Phillips, WI 54555  
(715) 339-4521  
www.embracewi.org

**FAMILY CENTER PARK FALLS DENTAL CENTER**

75 Sherry Ave  
Park Falls, WI 54552  
(715) 762-0200  
marshfieldclinic.org

**HEALTH ALLIANCE OF PRICE COUNTY**

P.O. Box 76  
Phillips, WI 54555  
(715) 339-4916

**HEARING ADVANTAGE**

157 N Lake Ave  
Phillips, WI 54555  
(715) 362-3711  
www.hearingadvantagellc.com

**LIESEN PINZL KESSINGER DENTAL**

277 4th Ave. N  
Park Falls, WI 54552  
(715) 762-4825  
www.lpkdental.com

**MARSHFIELD CLINIC - PARK FALLS**

50 Sherry Ave  
Park Falls, WI 54552  
(715) 762-7311  
www.marshfieldclinic.org/locations/  
centers/park%20falls%20-%20  
marshfield%20medical%20center

**NORTHLAKES COMMUNITY CLINIC**

110 2nd Ave N  
Park Falls, WI 54552  
(715) 762-2950  
www.nlccwi.org

**NORTHERN SIGHT VISION CLINIC**

104 A N. Argyle Ave  
Phillips, WI 54555  
(715) 339-2040  
www.visionsource-northersight.com

**NORTHWOODS DENTISTRY, S.C.**

244 Division St  
Park Falls, WI 54552  
(715) 762-2188  
www.northwoodsdentistry.com

**NORTHWOODS DENTISTRY, S.C.**

605 Peterson Drive  
Phillips, WI 54555  
(715) 428-2421  
www.northwoodsdentistry.com

**MARSHFIELD MEDICAL CENTER—PARK FALLS MEDICAL OFFICES**

50 Sherry Avenue  
Park Falls, WI 54552  
(715) 762-7311  
www.marshfieldclinic.org/locations

**PRECOUR CHIROPRACTIC**

N9691 Hwy 13  
Phillips, WI 54555  
(715) 339-2052

**REDMAN & GELINAS EYE CARE**

698 S. 4th Ave.  
Park Falls, WI 54552  
(715) 762-2300  
www.redmangelinaseyecare.com/

**RENEW U SPA**

418 4th Ave N  
Park Falls, WI 54552  
(715) 416-3520  
www.vagaro.com/renewuspa23

**TAYLORED FAMILY CARE CLINIC—PHILLIPS**

133 N Lake Avenue  
Phillips, WI 54555  
(715) 339-2273  
tayloredfamilycare.com/

**HOME & BUSINESS SERVICES****AC CARPET PLUS LLC**

N14042 Flambeau Ave  
Fifield, WI 54524  
(715) 762-1032  
www.accarpetplus.com

**ADAMS OF WAUSAU/ CHRISTOPHER ELECTRIC**

1116 East State Hwy 153  
Mosinee, WI 54455  
715-907-8715  
www.adamspower.com

**ALLIED PLUMBING LLC**

N7573 East Dover Rd  
Phillips, WI 54555  
(262) 689-0438  
www.allied-plumbing.com

**BLACK CREEK SERVICES**

1164 W Broadway Ave  
Medford, WI 54451  
715-560-8397 John  
blackcreekpropertymanagers.com

**BOOMTOWN TREE SERVICE, LLC**

W10867 County Road E  
Park Falls, Wisconsin 54552  
(715) 762-3677

**ELK RIVER SEPTIC**

N10018 Dardis Lake Lane  
Phillips, WI 54555  
(715) 339-3953

**FAST TRAX INC.**

W6830 Southview Lane  
Phillips, WI 54555  
(715) 339-4016

**FRIEZE FIREWOOD LLC**

W6830 Little Chicago Rd.  
Phillips, WI 54555  
(715) 567-0616

**HANSEN H.V.A.C**

508 N Lake Ave  
Phillips, WI 54555  
(715) 339-3009

**HILGY'S GAS**

225 S Lake Ave  
Phillips, WI 54555  
(715) 339-3575

**JESUNAS CABINETRY & FURNITURE**

N10403 Jesunas Lane  
Phillips, WI 54555  
(715) 339-4489  
www.jesunascabinetry.com/

**K & B REFRIGERATION**

722 S. Lake Ave  
Phillips, WI 54555  
(715) 748-4401  
www.kandbrefrigeration.com

**KARNOSH WELL DRILLING**

W7244 S. Minnow Lake Road  
Phillips, WI 54555  
(715) 339-3188



**KOSMER PROPERTY CARE LLC**

N9554 County Rd F  
Phillips, WI 54555  
(715) 518-3747  
kosmerpropertycare.com/

**KT CARPET CLEANING**

W5193 Bruno Drive  
Tomahawk, WI 54487  
(715) 820-0895

**LAKESIDE PROPERTY SERVICE & MANAGEMENT LLC**

1380 1st Ave N.  
Park Falls, WI 54552  
(715) 661-8114

**MASTERCARE LAWN SERVICE LLC**

N16251 State Hwy 13  
Park Falls, WI 54552  
(715) 661-8802

**MASTERCARE TRUCKING LLC**

N16251 State Hwy 13  
Park Falls, WI 54552  
(715) 661-8802

**MOORE STORAGE**

215 N. 5th Ave.  
Park Falls, WI 54552  
(715) 762-3551

**NORTHERN COMFORT**

175 Chestnut  
Phillips, WI 54555  
(715) 339-6060  
www.northerncomfortss.com

**NORVADO**

105 N Avon Ave  
Phillips, WI 54555  
(800) 250-8927  
norvado.com/pctc

**NOVAK TREE SERVICE**

W9855 Midway Rd  
Catawba, WI 54515  
(715) 609-9528

**PARK FALLS TRUE VALUE**

1114 4th Ave S  
Park Falls, WI 54552  
(715) 762-2402  
www.parkfallstruevalue.com

**PARK FALLS BUILDING & HARDWARE**

645 4th Ave N  
Park Falls, WI 54552  
(715) 762-3255  
www.parkfallsbuilders.com

**PEST CONTROL PLUS**

N11719 Price Lake Rd  
Park Falls, WI 54552  
(715) 661-2087

**PHILLIPS LUMBER & HARDWARE**

111 Fairway Drive  
Phillips, WI 54555  
(715) 339-2008  
www.doitbest.com

**PIEPER ELECTRICAL SERVICE, INC.**

1050 4th Ave. N.  
Park Falls, WI 54552  
(715) 762-2659  
www.pieperpower.com

**PRICE ELECTRIC COOPERATIVE**

W6803 Springs Dr.  
Phillips, WI 54555  
(715) 339-2155  
priceelectric.coop

**RESTORU NORTH**

418-4th Avenue North  
Park Falls, WI 54552  
(715) 762-1490  
www.restoru.net

**RITCHIE LAKELAND OIL & PROPANE**

8783 Hansen Rd  
Minocqua, WI 54548  
(715) 356-3245  
https://ritchiepropane.com/

**RON ERNST LUMBER**

W7179 Balsam St  
Fifield, WI 54524  
(715) 762-2225  
www.ronernstlumber.com

**SCHILLING ELECTRIC**

276 N. Lake Ave.  
Phillips, WI 54555  
(715) 409-3521  
www.schilling.ecl

**SPACEK LAWN CARE AND SNOWPLOWING**

N6986 Cranberry Lake Lane  
Phillips, WI 54555  
(715) 820-0359

**STATIC X ELECTRICAL**

N14634 State Highway 13  
Park Falls, WI 54552  
(715) 661-9004  
staticxelectrical.centurylinksite.net/

**TEAM AND SONS WELL DRILLING LLC**

N700 St Hwy 13  
Ogema, WI 54459  
(715) 767-5166  
teamwelldrilling.com/

**TODD'S REDI MIX CONCRETE**

N12502 Hwy. 13  
Fifield, WI 54524  
(715) 762-5640

**VALOR SEPTIC SERVICE, LLC**

W7725 Short Cut Rd  
Phillips, WI 54555  
(715) 339-2180

**XCEL ENERGY**

310 Hickory Hills Lane  
Phillips, WI 54555  
(715) 682-6936  
xcelenergy.com

**XCEL ENERGY**

2400 Farm Road  
Ashland, WI 54806  
(715) 682-6936  
www.xcelenergy.com

## LAUNDRY SERVICES

**THE LAUNDRY ROOM**

174 Walnut St  
Phillips, WI 54555  
(715) 339-2332

**VALLEY LAUNDRY**

884 4th Ave. S.  
Park Falls, WI 54552  
(715) 661-3829

## LODGING

**ABEL'S FOUR SEASON RETREAT**

W7586 County Rd W  
Phillips, WI 54555  
(312) 480-1015  
www.abels4seasonretreat.com

**AMERIVU INN**

1212 4th Ave S  
Park Falls, WI 54552  
(715) 762-3383  
Amerivuinn.com

**BIRCHES RESORT**

1727 N. Boot Lake Road  
Park Falls, WI 54552  
(715) 583-4500  
www.birchesresort.com

**BUTTERNUT LAKE LODGE**

N16517 Lakeshore Drive  
Butternut, WI 54514  
(715) 972-3760  
www.butternutlakelodge.net

**EAGLE POINTE LODGING**

N16469 Preisler Lane  
Butternut, WI 54514  
(715) 661-0943  
eaglepointelodging.com/

**EDGEWATER RETREAT**

N9155 Elk River Road  
Phillips, WI 54555  
(262) 210-1550

**FISKEHUS SCANDINAVIAN CABIN ON DISAPPEARING CREEK**

W6829 Disappearing Creek Road  
Phillips, WI 54555  
(920) 915-8084  
airbnb.com/h/scandiphillips cabin

**FLYWAY RESORT**

N8221 E Wilson Flowage Rd  
Phillips, WI 54555  
715-339-3151  
flywayresort.com

**HARBOR LAKE HOUSE**

125 Cty Rd F  
Phillips, WI 54555  
(715) 492-1507  
vrbo.com/3024130

**HIDDEN COVE RESORT**

W7396 S Long Lake Rd  
Phillips, WI 54555  
(715) 820-3881  
www.hiddencoveresort.com

**HIDDEN VALLEY RESORT**

W7714 County Rd W  
Phillips, WI 54555  
(715) 820-1297  
www.hiddenvalleywi.com

**LAKESIDE LODGING**

N8885 Cemetery Rd  
Phillips, WI 54555  
(715) 762-3291  
www.upnorthvacationlodging.com

**LAKESHORE PINES**

N16846 Lakeshore Drive  
Butternut, WI 54514  
(715) 762-3291  
https://lakeshorepines.net/

**LAZY LOON LODGE**

N16054 State Hwy 13  
Park Falls, WI 54552  
(715) 518-9258  
https://www.facebook.com/profile.php?id=61557441936009

**LENA'S NORTHERN PINES RESORT**

N16243 Lakeshore Drive  
Butternut, WI 54514  
(715) 208-2795  
www.NorthernPines.net

**MILLER LAKE HOUSE**

N8569 E Wilson Flowage Rd  
Phillips, WI 54555  
(715) 347-6877

**MOOSE JAW LODGE & RESORT**

W770 Wind Song Lane  
Park Falls, WI 54552  
(715) 762-1463  
www.moosejawresort.com

**NORTHERN LIGHTS INN**

1113 S 4th Ave  
Park Falls, WI 54552  
(715) 762-2406  
https://northernlightsinn.com/

**NORTHWOODS PROPERTY MANAGEMENT, LLC**

(UpNorthVacationLodging.com)  
187 N Lake Ave  
Phillips, WI 54555  
(715) 339-4663  
UpNorthVacationLodging.com

**PENINSULA PINES RESORT & CAMPGROUND, LLC**

855 N. Little Muskie Road  
Park Falls, WI 54552  
(715) 583-4554  
info@peninsulapinesresort.com

**RED PINES RESORT & SUITES**

850 Elk Lake Drive  
Phillips, WI 54555  
(715) 339-4333  
www.redpines.com

**RED TREE RESORT**

W7770 County Road W  
Phillips, WI 54555  
(715) 820-0710  
www.redtreeresort.com

**REESE'S RESORT**

W7510 Point Rd  
Phillips, WI 54555  
(715) 339-3158  
www.reesesresort.com

**ROCK GARDEN TAVERN/ VACATION RENTAL**

N8220 Hwy 13  
Phillips, WI 54555  
(715) 339-7282

**RUSTY'S LOON BAY RESORT**  
N8075 E. Wilson Flowage Rd  
Phillips, WI 54555  
(715) 339-4638  
www.rustysloonbayresort.com

**SHORE VIEW CABINS LLC**  
984 Darrell Ave  
Phillips, WI 54555  
(715) 571-7419  
www.shoreviewcabins.com/

**SUPER 8 MOTEL**  
726 S Lake Ave  
Phillips, WI 54555  
(715) 339-2898  
www.super8.com

**THUNDERHEAD LODGE, LLC**  
W9011 Fern Drive  
Butternut, WI 54514  
(715) 762-3291  
www.thunderheadlodgeandcabins.com

**WESTVIEW RETREAT**  
N10515 E Solberg Lake Rd  
Phillips, WI 54555  
(715) 339-4234  
www.vrbo.com/236334

## MANUFACTURING / PRODUCTION

**BW PAPERSYSTEMS**  
1300 N. Airport Rd  
Phillips, WI 54555  
(715) 339-2191  
www.bwpapersystems.com

**COMPUMOLD TOOL & DESIGN INC**  
710 S. Airport Rd  
Phillips, WI 54555  
1-715-339-3000  
www.compumold.com

**IAP, INC**  
W6905 Paradise Lane  
Phillips, WI 54555  
(715) 339-3024  
www.iapfan.com

**MIDWEST HARDWOOD  
CORPORATION - PARK FALLS**  
Hardwoods  
143 North 5th Ave  
Park Falls, WI 54552  
(715) 762-5600  
www.parkfallshardwoods.com

**PHILLIPS MEDISIZE, LLC**  
One Plastics Drive  
Phillips, WI 54555  
(715) 339-2161  
www.phillipsmedisize.com

**PHILLIPS PLATING CORPORATION**  
984 N. Lake Ave  
Phillips, WI 54555  
(715) 339-3031

**PRICE CRANBERRY LAKE**  
N6969 Cranberry Lake Lane  
Phillips, WI 54555

**SRC AMERICA**  
1574 Hillcrest Road  
Phillips, WI 54555  
(715) 339-3766  
www.srcroll.com

**UNITED PRIDE DAIRY**  
W5993 Little Chicago Rd  
Phillips, WI 54555  
(715) 339-6779  
www.unitedpridedairy.com

**WEATHER SHIELD MANUFACTURING**  
400 Legacy Lane  
Park Falls, WI 54552  
715-748-2100  
www.weathershield.com

## PHOTOGRAPHY

**CHAD PALZKILL PHOTOGRAPHY**  
W7865 County Rd F  
Phillips, WI 54555  
(715) 339-2005  
www.chadpalzkill.com

## PROFESSIONAL / BUSINESS SERVICES

**ADVANCE PRINTING OF HAYWARD**  
15576 US Hwy 63  
Hayward, WI 54843  
(715) 634-6888  
www.advanceprintinghayward.com

**CITY OF PARK FALLS**  
410 Division St  
Park Falls, WI 54552  
(715) 762-2436  
www.cityofparkfalls.com

**DEAN DISTRIBUTING**  
1678 Justin St  
Arbor Vitae, WI 54568  
(715) 362-7330  
www.deandist.com

**E O JOHNSON OFFICE  
TECHNOLOGIES**  
8400 W Stewart Ave  
Wausau, WI 54401  
(844) 365-4968  
www.eojohnson.com

**FOUR SEASONS COMMUNITY  
DEVELOPMENT CENTER**  
165 Cty Rd. F  
Phillips, WI 54555  
(715) 339-8517

**GENERAL BEER NORTHWOODS**  
120 Jack Frost  
Eagle River, WI 54521  
(715) 214-5920

**GLIDDEN AREA DEVELOPMENT  
CORPORATION**  
PO Box 14  
Glidden, WI 54527  
(715) 663-0343  
www.gliddenwi.org

**J. A. HUYCKE CONSULTING**  
476 S Argyle Ave.  
Phillips, WI 54555  
(715) 339-6010  
jhuycke.com/

**MATHISON & OSWALD  
ACCOUNTING**  
207 4th Ave North  
Park Falls, WI 54552  
(715) 762-2404

**MAYS VIRTUAL BOOKKEEPING**  
PO BOX 144  
Butternut, WI 54514  
(813) 562-1839  
www.MaysVRBookkeeper.com

**NORTHWEST CEP**  
400 4th Ave south  
Park Falls, WI 54552  
(715) 762-2477  
www.nwcep.org

**PARK FALLS AREA CHAMBER OF  
COMMERCE**  
154 N. 4th Ave  
Park Falls, WI 54552  
(715) 762-2703  
www.parkfalls.com

**PARK FALLS AREA COMMUNITY  
DEVELOPMENT. CORP**  
410 Division St  
Park Falls, WI 54552  
(715) 744-4700

**PARK FALLS POLICE DEPARTMENT**  
400 4th Ave So  
Park Falls, WI 54552  
(715) 762-2446

**PEPSI COLA OF PARK FALLS**  
200 6th Ave  
Park Falls, WI 54552  
(715) 762-3773

**PRICE COUNTY**  
126 Cherry St  
Park Falls, WI 54552  
(715) 339-5138

**RANDY W ZOESCH, C.P.A.**  
207 4th Ave North  
Park Falls, WI 54552  
(715) 762-4111  
www.rwzcpa.com

**RICHTER LAW OFFICE LLC**  
184-4th Avenue South  
Park Falls, WI 54552  
(715) 762-1810  
richterlawoffice.com

**SIGN STUDIO & PRINT SHOP, LLC**  
156 S Lake Ave  
Phillips, WI 54555  
(715) 339-3750  
www.signstudioonline.com

**SIGNATURE SIGN & GRAPHICS, INC.**  
234 S 5th St  
Butternut, WI 54514  
(715) 769-3200  
www.signaturesignwi.com

**SLABY DEDA LAW OFFICES**  
215 N Lake Ave  
Phillips, WI 54555  
715-339-2196  
writz@slabylaw.com

**SLABY DEDA LAW OFFICES**  
170 N. 4th Ave  
Park Falls, WI 54552  
(715) 762-3258  
https://www.slabylaw.com/

**SPEER LAW OFFICE, LLC**  
166 North Lake Avenue  
Phillips, WI 54555  
(715) 339-2190  
www.speerlawoffice.com

**TOWN OF LAKE**  
W8095 County Road E  
Park Falls, WI 54552  
(715) 762-2151

**USDA FOREST SERVICE, PARK FALLS  
RANGER STATION USFS**  
Park Falls, WI 54552  
(715) 762-2461  
https://www.fs.usda.gov/cnnf

**WILD WOODS TAXIDERMY STUDIO**  
N13981 Flambeau Ave  
Fifield, WI 54524  
(715) 762-5550  
wildwoodstaxidermy.biz

## REAL ESTATE

**BIRCHLAND REALTY INC**  
104 N Lake Ave  
Phillips, WI 54555  
(715) 339-2181  
www.birchlandrealty.com

**BIRCHLAND REALTY INC.**  
1056 4th Ave. South  
Park Falls, WI 54552  
(715) 762-3276  
www.birchlandrealty.com

**FIRST WEBER, INC.**  
332 4th Ave  
Park Falls, WI 54552  
(715) 762-2232  
www.firstweber.com

**GOWEY ABSTRACT & TITLE CO, INC**  
214 N 4th Ave  
Park Falls, WI 54552  
(715) 762-3335  
www.midwesttitlegroup.com

**HOUSING AUTHORITY OF  
PARK FALLS**  
1175 3rd Ave S  
Park Falls, WI 54552  
(715) 762-2133  
https://parkfallshousing.org/

**NORTHWOODS ASSOCIATION OF  
REALTORS®**  
320 Oak St, Suite B  
Woodruff, WI 54568  
(715) 356-3400  
northwoodsrealtors.org



**NORTHWOODS PROPERTY INSPECTIONS**

857 3rd Ave S  
Park Falls, WI 54552  
(715) 934-9105  
www.northwoodspropertyinspections.com

**NORTHWOODS REALTY, LLC**

187 N Lake Ave  
Phillips, WI 54555  
(715) 820-0630  
www.northwoodswi.com

**RE/MAX, NEW HORIZONS REALTY**

716 S Lake Ave  
Phillips, WI 54555  
(715) 339-6818  
www.newhorizonsrealtywi.com

**RESTAURANT,  
FOOD & BEVERAGE**

**A & W RESTAURANT**

774 N. Lake Avenue  
Phillips, WI 54555  
(715) 339-3104

**BIG BEAR LODGE, INC.**

W1614 County Rd W,  
Winter, WI 54896  
(715) 332-5521

**BOBBERS ON THE LAKE**

11633 Lakeview Drive  
Butternut, WI 54514  
(715) 769-3333  
https://www.facebook.com/  
BobbersonTheLake-103890124670637

**BURGERS BAR & GRILL PHILLIPS**

784 N Lake Ave  
Phillips, WI 54555  
(715) 339-3456

**CAPTAIN NEMO'S PUB & GRUB LLC**

214 2nd Ave N  
Park Falls, WI 54552  
(715) 762-5557  
www.captanemospub.com

**FAT DADDY'S ICE CREAM  
AND EATS**

W5824 Springs Drive  
Phillips, WI 54555  
(715) 661-1604

**FLYWAY RESORT**

N8221 E Wilson Flowage Rd  
Phillips, WI 54555  
715-339-3151  
flywayresort.com

**FORK FIVE**

N9007 W Loop Rd.  
Phillips, WI 54555  
(715) 820-6052

**HARBOR VIEW AT THE LAKE**

1094 N Lake Ave  
Phillips, WI 54555  
(715) 339-2626  
www.harborviewonline.com

**HOMESPUN COFFEE & CRAFTS**

164 N Lake Ave  
Phillips, WI 54555  
(715) 339-6050

**JOHN'S 3 MILE CORNER BAR & GRILL**

N7297 State Hwy 13  
Phillips, WI 54555  
(715) 339-3665

**KAYLA'S KITCHEN & CLOSET**

160 North 2nd Ave.  
Park Falls, WI 54552  
715-762-5004 Kitchen  
www.kaylaskitchenandcloset.com

**MARIE'S ON FAYETTE**

145 Fayette St.  
Phillips, WI 54555  
(715) 339-6057  
www.mariesonfayette.vpweb.com

**MUSKY JACKS**

W640 HWY 70  
Park Falls, WI 54552  
(715) 762-2990

**NINE MILE TAVERN/CANOE**

**RENTALS**  
W10590 Hwy 70  
Park Falls, WI 54552  
(715) 762-3174  
www.ninemiletavern.com/

**NORTHERN LIGHTS**

163 North Lake Ave.  
Phillips, WI 54555  
(715) 339-3646

**NORTHWOODS SUPPER CLUB**

N14066 Flambeau Ave  
Fifield, WI 54524  
(715) 762-4447

**OXBO RESORT**

6275N Oxbo Drive  
Park Falls, WI 54552  
(715) 762-4786  
www.theoxboresort.com

**PARK FALLS FAMILY RESTAURANT**

1171 4th Ave S  
Park Falls, WI 54552  
(715) 904-0892

**PHILLIPS CAFÉ & CATERING**

167 N. Lake Ave  
Phillips, WI 54555  
(715) 339-3232

**RAAB'S EXTRA INNINGS**

W4975 Holmes Street  
Ogema, WI 54459  
(715) 767-5300

**ROCK GARDEN TAVERN**

N8220 Hwy 13  
Phillips, WI 54555  
(715) 339-7282

**SOUTH FORK TAVERN**

N11154 County Rd F  
Phillips, WI 54555  
(715) 339-2286

**THE LANES**

1127 4th Ave South  
Park Falls, WI 54552  
715-762-3237  
https://www.lanesparkfalls.com/

**THE RAIL TRAIL CAFÉ**

W5016 Hwy 86  
Ogema, WI 54459  
(715) 767-5222

**RETAIL SPECIALTY  
STORES**

**BADER'S SPORT CENTER, LLC**

262 S. Lake Ave.  
Phillips, WI 54555  
(715) 339-4867  
www.baderssportscenter.com

**BIGFOOT BBQ SAUCE**

11206 S Park Rd  
Butternut, WI 54514  
(715) 762-1986

**BLACK RIVER DIAMOND CO.**

753 E Perkins Street  
Medford, WI 54451  
(715) 785-5140  
blackriverdiamond.com

**BURNT ELK LOG DÉCOR, LLC**

262 S. Lake Ave  
Phillips, WI 54555  
(715) 339-3814  
www.facebook.com/burntelk/

**CABIN CREATIONS**

N8051 State Hwy 13  
Phillips, WI 54555  
(715) 339-6238  
www.cabincreationswi.com

**CHEQUAMEGON HOME  
FURNISHINGS**

150 2nd Ave N  
Park Falls, WI 54552  
(715) 762-2855  
www.chequamegonhomefurnishings.com/

**COUNTRY SAUSAGE INC**

N7871 State Highway 13 S  
Phillips, WI 54555  
(715) 339-3631  
www.countrysausage.com

**CROSS KEYS TATTOO LLC**

187 S Lake Ave.  
Phillips, WI 54555  
(715) 820-1341

**DEER CREEK ANGUS**

N9682 Deer Creek Road  
Phillips, WI 54555  
(715) 550-6156  
www.DeerCreekAngusFarm.com

**ELK RIVER CUSTOM RODS, LLC**

1384 N. Lake Ave.  
Phillips, WI 54555  
(715) 339-4209  
www.elkrivercustomrods.com

**FIFIELD GROCERY & SMOKEHOUSE**

N14030 Flambeau Ave  
Fifield, WI 54524  
(715) 762-3838

**JOE'S COUNTRY CORNER**

N7890 State Hwy 13  
Phillips, WI 54555  
(715) 339-2020  
joescountrycorner.com

**LAKEVIEW PHARMACY**

114 N Lake Ave  
Phillips, WI 54555  
(715) 339-2424

**MSC CREATIONS**

334 Division St  
Park Falls, WI 54552  
(715) 776-6610

**OH DEER NUTRITION**

334 division st  
Park Falls, WI 54552  
(715) 558-4087  
jenniferlbastl.goherballife.com

**PARK FALLS FARMERS MARKET LLC**

1185 S 4th Avenue  
Park Falls, WI 54552  
(218) 341-6800

**PARK PHARMACY**

138 2nd Ave N  
Park Falls, WI 54552  
(715) 762-3283  
www.pfhealthmart.com

**PATCHOULI GARDEN LLC**

159 Division St  
Park Falls, WI 54552  
(715) 762-1885  
www.patchouligarden.com

**PHILLIPS LUMBER & HARDWARE**

111 Fairway Drive  
Phillips, WI 54555  
(715) 339-2008  
www.doitbest.com

**PHILLIPS NORTHERN**

**MERCHANDISE**  
132 N Lake Ave  
Phillips, WI 54555  
(715) 339-4500

**PICK-N-SAVE/KROGER #127**

256 S. Lake Ave.  
Phillips, WI 54555  
(715) 260-7001  
www.picknsave.com

**POLACEK IMPLEMENT, INC.**

N8068 HWY. 13  
Phillips, WI 54555  
(715) 339-3323  
www.polacekimplement.com

**PRENTICE MARKET & DELI**

520 Center Street  
Prentice, WI 54556  
(715) 428-2958

**ROBIN'S CUSTOM ARRANGEMENTS**

161 North Lake Ave  
Phillips, WI 54555  
(715) 820-1421  
www.facebook.com/  
RobinsCustomArrangements/

**ROCKY ROAD BOUTIQUE**

100 Trinity Dr.  
Phillips, WI 54555  
(715) 968-6908  
rockyroadboutique.com

**SIGN STUDIO & PRINT SHOP LLC**

156 S. Lake Ave  
Phillips, WI 54555  
(715) 339-3750  
www.signstudioonline.com

**ST. CROIX ROD OF PARK FALLS**

856 4th Ave North  
Park Falls, WI 54552  
(715) 762-3226  
www.stcroixrods.com

**SUPER ONE FOODS**

1347 4th Ave. So.  
Park Falls, WI 54552  
(715) 762-4272  
www.superonefoods.com

**THE 5 SENSES, LLC**

146 Balsam St  
Phillips, WI 54555  
(715) 339-2777  
www.the5senseswi.com

**TOP DRAWER BOUTIQUE**

156 N Lake Ave  
Phillips, WI 54555  
(715) 339-4844

**TOTEM POLE LIQUOR, LLC**

214 S. Avon Ave.  
Phillips, WI 54555  
(715) 339-2019

**WINTER GREENHOUSE**

W7041 Olmstead Road  
Winter, WI 54896  
(715) 200-5430  
www.wintergreenhouse.com

**SENIOR SERVICES****LAKESIDE VILLA**

804 N. Lake Ave.  
Phillips, WI 54555  
(715) 339-3939  
lakesidevillawi.com/

**PARK MANOR LTD.**

250 Lawrence Ave  
Park Falls, WI 54552  
(715) 762-2449  
www.parkmanorwi.com

**PARK VILLAGE**

700 W. Division St.  
Park Falls, WI 54552  
(715) 762-4747  
www.homzmanagement.com

**THE WATERFORD AT PARK FALLS**

354 Linden Street  
Park Falls, WI 54552  
(715) 744-2444  
sonidaseniorliving.com

**SPORTS & RECREATION****BADER'S SPORT CENTER, LLC**

262 S. Lake Ave.  
Phillips, WI 54555  
(715) 339-4867  
www.baderssportscenter.com

**BIG BEAR RECREATIONAL RENTALS,**

W1614 County Rd W  
Winter, WI 54896  
(715) 332-5544  
www.bigbearrecreationalrentals.com

**CATAWBA DRIFTSPLITTERS**

W6386 Springs Dr  
Phillips, WI 54555  
(715) 820-1344

**CHASE CREEK OUTFITTERS**

W4806 Musser Lane  
Phillips, WI 54555  
(715) 339-4967  
www.chasecreekoutfitters.com

**CNR POWERSPORTS & SMALL ENGINE REPAIR LLC**

N15570 Ash St  
Park Falls, WI 54552  
(608) 228-7223  
https://www.facebook.com/profile.  
php?id=61555401594700

**COOLIDGE SPRINGS TROUT RANCH**

W6981 Trout Pond Road  
Fifield, WI 54524  
(715) 339-4484

**ELK RIVER PIONEERS**

**SNOWMOBILE CLUB**  
N8804 Eight Mile Creek Rd  
Phillips, WI 54555  
(715) 332-5380  
elkriverpioneers.com

**IDES GUIDES & BUFFALO HIDES**

N12499 Hicks Landing Rd  
Fifield, WI 54524  
(715) 518-4009  
www.idesguides.com

**J & A SERVICES**

W7323 State Hwy 182  
Park Falls, WI 54552  
(414) 902-0449  
https://www.facebook.com/  
JA-Services-100832925930335/

**LUGERVILLE CHASERS**

**SNOWMOBILE CLUB**  
PO Box 131  
Phillips, WI 54555  
(715) 339-4066  
www.lugervillechasers.com

**MONARCH WILDLIFE WAYSIDE REFUGE & PARK**

N6282 State Highway 111  
CATAWBA, WI 54515  
1-715-820-6162  
monarchwildlifewaysiderefuge.com

**NORTHWOODS HI-RIDERS**

**SNOWMOBILE CLUB**  
9911 Stadt Rd  
Marshfield, WI 54449  
(715) 486-5386  
www.nwhiriders.com

**PHILLIPS CHAIN O'LAKES ASSOC.**

885 Elk Lake Drive  
Phillips, WI 54555  
phillipschain.org/

**PHILLIPS CHAPARRALS SNOWMOBILE CLUB**

PO Box 4  
Phillips, WI 54555

**PHILLIPS HEALTH & FITNESS LLC**

137 N Lake Ave  
Phillips, WI 54555  
(715) 551-2438

**PRENTICE BUSHBENDERS, INC.**

702 Pine St.  
Prentice, WI 54556  
(715) 820-2332

**PRENTICE PINES GOLF COURSE**

403 Center Street  
Prentice, WI 54556  
(715) 428-2127  
www.vil.prentice.wi.gov

**PRICE AREA TRAIL HUB, INC (PATH)**

166 N Lake Ave  
Phillips, WI 54555  
(715) 339-2190  
priceareatrailhub.org

**PRICE COUNTY POWERSPORTS LLC**

315 S Airport Road  
Phillips, WI 54555  
(715) 339-1538  
pricecountypowersports.com

**ROSS'S SPORT SHOP + GUIDE SERVICE**

286 N Lake Ave  
Phillips, WI 54555  
(715) 339-3625  
rosssonline.com/

**SOLBERG LAKE ASSOCIATION**

N10959 E Solberg Lake Road  
Phillips, WI 54555

**SOO LAKE UNITED ASSOCIATION**

W9619 County Road S  
Phillips, WI 54555  
(715) 332-5628  
www.soolakeassociation.com

Whether you're looking to relocate, expand, or start a new business, the Park Falls Area Chamber of Commerce and the Phillips Area Chamber of Commerce are here to assist you and provide the information you need to make an informed business decision.



Park Falls Area  
Chamber of Commerce  
154 4th Ave. N  
Park Falls, WI 54552  
715-762-2703  
chamber@parkfalls.com  
www.parkfalls.com



Phillips Area  
Chamber of Commerce  
305 S. Lake St.  
Phillips, WI 54555  
715-339-4100  
chamber@phillipswisconsin.net  
www.phillipswisconsin.net





# Tour the Gardens

Beautiful Display Gardens  
Great Perennial Selection  
Annuals & Vegetables  
Large Nursery



**Winter  
Greenhouse**  
*growing with you...*

W7041 Olmstead Rd, Winter Wisconsin  
2 miles north of Winter off Hwy W

Free Catalog available - 715-200-5430  
[www.wintergreenhouse.com](http://www.wintergreenhouse.com)







- Access to Snowmobile Trails
- Access to ATV/UTV Trails
- 30 Rooms
- Recently Renovated
- Free Breakfast
- Corporate Discount!

Ameri Vu Inn  
1212 4th Ave South  
Park Falls, WI 54552  
Office: 715 762 3383  
amerivuinn54552@gmail .com  
[www.amerivuinn.com/parkfalls/](http://www.amerivuinn.com/parkfalls/)

