

everything points **HERE**.com



Photo Submitted by Lauren Gilchrist

Serving Stevens Point, Plover, Amherst, Rosholt, Almond-Bancroft, and surrounding areas

everything points **HERE**.com

A point is the beginning of a journey and everything points here for yours. Even at its origin, this community was founded on a point along the majestic Wisconsin River. You will find all of the key points about our community as you journey through the everythingpointshere.com website.

If you know how to have fun, dream big,
and have an engaged work ethic, make a journey to

JOIN US.

If you like to relax, be outdoors all four seasons, be with friends, enjoy fall colors, indulge in good food and craft beverages - and if you like to work with talented people - then all of that and more points you here, the one place where you can

CHOOSE YOUR YOU!



Photo Submitted by Worzalla Publishing Company




Photo Submitted by SPACVB



Photo Submitted by SPACVB



Photo Submitted by SPACVB



PACELLI CATHOLIC SCHOOLS

Developing future community leaders.

We believe in going beyond what's expected to take care of our community. We've created a culture rooted in tradition, faith, values, and service.

Our mix of challenging academics and faith-infused curriculum ensures our students leave prepared academically and spiritually to take on the world.

SCHEDULE A TOUR TODAY!

www.pacellicatholicschools.com/visitpcs



Lead Here

Leadership Portage County (LPC) is a long-standing leadership development course. The 10-month curriculum is an intensive leadership development program designed to give all leaders the skills, knowledge, and on-going support they need to succeed. LPC is not only for new or young professionals, but instead for leaders of all ages and titles. Participants in LPC will grow professionally and personally from the variety of leadership, team-building, communication and self-awareness exercises that are part of the curriculum. Leadership Portage County (LPC) challenges participants to broaden their understanding of Portage County and develop their leadership skills through network development, education, and community engagement.

For high school juniors and seniors, the **Portage County High School Leadership (PCHSL)** program is an excellent resume/college transcript and professional skill-building opportunity. Graduates from this program receive the Wisconsin Department of Public Instruction's Youth Leadership Certificate. Students develop leadership skills, confidence, and character through specific skill development, project-based learning and interaction with community leaders. The curriculum includes group work and collaborative learning time with the adults in Leadership Portage County, giving the students networking and mentorship opportunities. Students from all high schools in Portage County are eligible.



Our Mission: To provide leadership instruction through events and roundtable discussion groups to support individuals in fulfilling the purpose they were created for.

Our Vision: To cultivate vibrant communities guided by hope-filled, competent leaders.

Heartland Leadership Initiative and Lead Transformed are Proud Programs of the Portage County Business Council.



LeadTransformed consists of Weekly Roundtables: A gathering of 5-8 like-minded individuals, guided by a facilitator through the following process:

1. Review your previous week's progress
2. Read a new foundational leadership principle
3. Reflect and Rate your current application
4. Identify a Reason to improve
5. Drive Results by committing to one very specific achievable next step

LIVE2LEAD

A JOHN C. MAXWELL EVENT

Live2Lead is a half-day live simulcast, leader development experience designed to equip you with new perspectives, practical tools and key takeaways. You'll breathe new life into your leadership during this information-packed event.

Engage Here

MISSION

The Portage County Business Council's priorities for our members and the community are retention and attraction of businesses and employees.

VISION

The Portage County Business Council Foundation will be the preeminent leader in economic development and community growth.

VALUES

Engagement

Listening to the important priorities from members and engaging change.

Growth

Sharing member, community, regional, and statewide resources to enhance our partnerships.

Innovation

A creative economy and entrepreneurial culture supported by a vibrant work ethic.

Leadership

Taking the initiative for positive, proactive opportunities.

Network Development

Connecting member employees and promoting the interaction of those networks.

Partnerships

Teamwork with business, education, government, visitors, the arts and our citizens.



Photo Submitted by
Worzalla Publishing Company

Serving nearly 500 members, PCBC offers valuable benefits, including online advertisements, access to key community leaders, free job postings, free news releases, social media posts, and online event announcements.

Awards are given to member businesses throughout the year to recognize excellence. Awards such as the Ignite Young Professional Award, Small Business of the Year, Decree of Excellence, Entrepreneur of the Year, and Outstanding Contribution to Agriculture are just a few examples of the kinds of the recognition given.

Business on the Green takes place every June and gathers area professionals together to socialize, network, and, of course, golf!

Wines of the World, held in the fall of the year, features network development opportunities while

providing a chance to enjoy wines, craft beverages, and gourmet food.

Business After Hours is a networking event hosted by a different member each month. The event offers participants a chance to network, exchange ideas, and view the business facilities of other members.

Business X-Change meets monthly throughout the year. Programs focus on business topics pertinent to the community.

Women in Business is offered quarterly and is open to the public. It provides an opportunity for businesswomen in Central Wisconsin to network and discuss issues that affect their work and daily lives.

Partners in Education (PIE) has developed partnerships with high quality educational institutions

to deliver programs that ensure Portage County's future is in talent development and leadership.

PIE programs engage community volunteers who act as mentors, and business owners who provide valuable educational and career data. It also offers work-based learning through career fairs, shadow days, mentoring, and apprenticeships.

The Portage County Business Council Job Fair provides the opportunity for job seekers, anyone contemplating self-employment, and those interested in career development to meet and visit with area businesses that are currently hiring.

For more information about PCBC or any of these programs, please visit: PortageCountyBiz.com

Bragging Rights

FIND YOUR PLACE HERE



SIMPLY THE BEST

"One of the things that I love about Portage County is that it has always had a diverse community and a diverse industry base. I've never had a desire to live and work anywhere else."

John Hartman
Owner, Contemporary Photography

Stevens Point

Wisconsin's best-kept wonderful secret isn't so secret anymore. Stevens Point has been making appearance after appearance on national lists of America's best cities (see below).

With small town appeal and college town sophistication, Stevens Point has been growing steadily, reaching close to 27,000 residents according to U.S. Census Bureau estimates.

New residents and visitors discover a historic downtown area, a variety of shopping and entertainment options, and a diverse calendar of events, including cultural, athletic, and church-affiliated events.

Parks and natural areas such as the Sculpture Park and Green Circle Trail inspire outdoor enthusiasts to explore the beauty of Stevens Point.

[Stevens Point Bragging Rights](#)

Top 100 Smartest Cities

Lumosity

Top 10 Places for Job Seekers

NerdWallet

Green Tier Legacy Community

Wisconsin Dept. of Natural Resources

500 Best Cities for Outdoor Lovers

Millennial Personal Finance Blog

Award-Winning Skateboard Park

Wisconsin Ready Mixed Concrete Association

Top 100 Golf Courses in the Nation

Golf Digest

Photo Submitted by SentryWorld

Plover

Just south of Stevens Point is the Village of Plover. This charming community is conveniently located at the crossroads of I-39 and Hwy. 51, and it is home to a variety of retailers and businesses, including Pointe Precision and Great Northern Distilling.

This prosperous community with an average household income above the state average has attracted a growing number of retail plazas such as Crossroads Commons and Village Park. It has truly become a popular shopping and dining destination.

Even with its rapid growth, Plover has maintained its Midwestern charm, and there is great pride in preserving the region's history as evidenced by the Wisconsin Korean War Veterans Memorial.

Plover is also home to numerous green spaces, parks, and trails that provide opportunities for youth sports, picnicking, hiking, and biking.

Rosholt

Rosholt, a village located in Portage County, is a small and delightful rural community with around 500 residents.

Don't let the size fool you - Rosholt has a lot going on! With its variety of grocery stores, restaurants, specialty stores, salons, a library, dental office, and churches, there are plenty of activities to keep you busy.

For additional fun, check out some of Rosholt's unique attractions, such as McZ's Brew Pub or The Nest Art Studio.

Along with the many different events and entertainment that Rosholt has, it also offers exemplary school districts, both public and private serving grades K-12.

Amherst

Straddling the banks of the Tomorrow River, a Class 1 trout stream, and surrounded by the natural beauty of rural Wisconsin, the scenic Village of Amherst is a surprisingly independent community.

Medical services, groceries, banking, and most other necessities are readily available within Amherst's family friendly small-town atmosphere.

The Village has a municipal library, community center, brewery, and even its own tree nursery.

Tomorrow River School District, serving grades 4K-12, has a strong rural heritage that is the backbone of the community and is a continued source of pride.

Several industrial businesses call Amherst home, and the Village has a developing business park, as well as a picturesque downtown.



Photo Submitted by PCBC

5 Ways for #StePo Fun



Craft Collective

1 Tour and taste beer, wine & spirits, from one of the oldest breweries in the nation (Stevens Point Brewery) to the newest additions (Backcountry Brewing and District 1).

Arts & Culture

2 Discover local art from murals to galleries (inside and out) from Q Gallery to the Sculpture Park. Then head out for live music, theater and dance all year long!

Kid-Friendly Fun

3 Find events to keep the whole family happy! Then find more fun at the Children's Museum, K.A.S.H. Park, the Museum of Natural History, Schmeckle, or the Planetarium!

Head Outdoors

4 Hit the iconic Green Circle Trail, or head to Standing Rocks Park for year-round outdoor fun. Find more fun on the Wisconsin River.

Local Food

5 Start at the state's oldest farmers market (held daily May-Oct.). Then, pick up a Farm Fresh Atlas to find farm to fork restaurants, local farms, and producers in the region!

FIND YOUR OWN FUN! Order a FREE Visitor Guide at **STEVENSPOINTAREA.COM**



Jobs

WORK HERE



A SMART CHOICE FOR YOUNG PROFESSIONALS

“I love the ‘best of both worlds’ life that Stevens Point offers. I enjoy being only a few hours from several large cities (and airports) for when the travel bug hits, but also appreciate living in a close-knit and affordable community. The opportunities that Stevens Point has, for young professionals especially, is something you can’t find in bigger cities. ”

Savannah Hebior

**Young professional, formerly from Los Angeles, CA
Moved back to Stevens Point because she loves the area**

Offering Innovation and More

People who live here take pride in their community and work together to support civic projects that will improve the quality of life for everyone. Businesses, educational providers, and government agencies work as partners, supporting entrepreneurial ventures and offering training programs to ensure a skilled workforce for emerging new industries.

Boasting a low cost of living, a thriving economy, and excellent prospects for long-term growth, this is a great place to work and call home.

Central Wisconsin residents enjoy short commutes, traditional neighborhoods with friendly neighbors, and the opportunity to have a balance between work and leisure.

In addition to affordable housing and an excellent education system, the area offers year-round outdoor recreation, plus an ever-growing arts and entertainment scene.

The easygoing lifestyle is perfect for young professionals looking for a safe place to put down roots.



Photo Submitted by PCBC



IGNITE YOUNG PROFESSIONALS

Ignite Young Professionals is a collaborative, energetic group dedicated to personal and professional development for all young adults connected to Portage County. Ignite provides the opportunity to develop leadership skills, connect with other young professionals, and learn about the people and places that make our community a great place to live, work, and play.

About Ignite

Ignite Young Professionals hosts events that focus on three core areas.

Career - Roundtable discussions with area businesses and community leaders.

Connect - Social events that provide ample opportunities for members to network and connect with local professionals.

Community - Opportunities to partner with non-profits and engage in hands-on service activities.

Membership with Ignite Young Professionals will provide you with the opportunity to visit local businesses and talk with the entrepreneurs who have built them, meet and network with your peers as well as business leaders in the county, and get involved in your community.



Photo Submitted by PCBC



Photo Submitted by PCBC



It's a beautiful thing when a *career*
and a *passion* **come together.**

NOW HIRING
SKYWARD.COM/CAREERS



Nicole W., Marketing Specialist

Be the solution. Make a difference.

Join AIG Travel today!

Explore career opportunities at AIG Travel – the nation's leading provider of travel insurance and global assistance services. If you are an out-of-the-box thinker with excellent communication skills, we need professionals like you to provide exceptional service to our travelers around the world.

Join a team that offers professional growth opportunities with a comprehensive compensation and benefits package. We are currently hiring for immediate openings in our Stevens Point office:

- Account Development Manager
- Claims Adjusters
- Underwriting Analyst
- Medical Assistance Coordinator
- Travel Assistance Coordinator



To search our open positions,
visit **www.aig.com/careers**.

EQUAL OPPORTUNITY EMPLOYER
2022 01/08/20





Photo Submitted by PCBC

BUSINESS RECRUITMENT, RETENTION, AND EXPANSION

Getting a new venture off on the right foot, or taking a current business to the next level, requires capital, expertise, qualified labor, and following proper legal procedures. Fortunately, the Portage County business community offers resources that remove the guesswork and streamline the process of growing within this thriving marketplace.

Tools For Business Success

Tools For Business Success is a FREE tool to help answer any questions you may have about starting a business or general information on business.

It is a one-stop shop for answers to questions about anything from business plans to building codes and everything in between.
resources4business.info/portagecountybiz

Locate in Wisconsin

Developed by the Wisconsin Economic Development Corporation (WEDC), this online site selection tool is designed to be the go-to site for comprehensive information about available business sites, commercial buildings, and demographic data throughout the state.

wedc.org
locateinwisconsin.com

Small Business Development Center (SBDC)

As a partner with the U.S. Small Business Administration, the SBDC at the University of Wisconsin-Stevens Point is one of a network of 12 small business development centers in the state.

The Center offers confidential, no cost business counseling as well as workshops and information to help small-business owners and entrepreneurs make informed business decisions.
uwsp.edu/conted/sbdc

CAP Services, Inc.

Technical assistance is available at no charge to low-income individuals starting a business or to businesses committed to creating jobs that will be filled by low-income individuals.

CAP's business development coordinators help individuals develop their business plan and assemble a financing package, which can include gap financing from CAP.

capservices.org

IDEA Center at CREATE Portage County

The IDEA Center believes communities grow best when they value, encourage, and support local residents with creative ideas.

They expand entrepreneurship to include creative ventures in the arts, business, community impact, and personal development.

The IDEA Center offers Central Wisconsin residents access to technology, programming, coaching, work and maker spaces, and a growing network of users and supporters that promote and support creativity, innovation, and collaboration.

createportagecounty.org/ideacenter

Wisconsin Institute for Sustainable Technology (WIST)

Research, laboratory services, and education provided by WIST help businesses and organizations meet their goals in ways that make more sustainable use of natural resources.

uwsp.edu/wist

SCORE

SCORE is a nonprofit organization that helps small businesses get off the ground and grow by providing education and experienced mentors for entrepreneurs at no charge or at a very low cost.

Local chapters are located in Wausau and Marshfield, with workshops held in Stevens Point.

score.org

Wisconsin Angel Network (WAN)

The Wisconsin Angel Network (WAN) fuels the growth of entrepreneurial, early stage financing.

wisconsinangelnetwork.com



RENT FROM THE EXPERTS

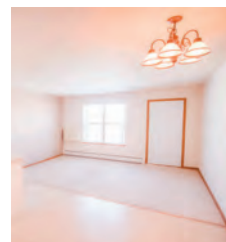
Willow Estates & River View Apartments

NOW LEASING

1, 2 & 3 BEDROOM APARTMENTS IN
PLOVER & STEVENS POINT

APPLY ONLINE TODAY!

WWW.SCSWIDERSKI.COM



A photograph of two women smiling in a snowy forest. The woman on the left is wearing a grey knit beanie and a blue jacket with a red sleeve. The woman on the right is wearing a black beanie with a purple band and a brown jacket. They are standing in front of snow-covered ground and bare trees.

Quality of Life

BE WELL HERE



TAKE CARE OF YOU

"It's not hard to live an active, healthy life in Portage County. The area provides a variety of trails, parks, and waterways which make it easy to stay active anytime of year. We also have a community where our local farmers have a strong presence at farmers markets and local restaurants provide fresh, nutritious farm to plate menu items."

Sarah Agena
Owner, Flexible Nutrition Solutions

Healthy Living

Life is about more than where you work and play. Portage County has several opportunities for you to find self-fulfillment, security, and a community that is here to support you.

Maintaining good health is easier here with an abundance of clean air and water, scenic walking and jogging trails, and access to highly rated healthcare providers.

Central Wisconsin is an outdoor lover's wonderland all year long. Boating, fishing, waterskiing, swimming, canoeing and kayaking are popular summer activities, with easy access to more than 40 public lakes and the Wisconsin, Plover and Tomorrow rivers.

Excellent trail systems, including the Green Circle Trail and Tomorrow River State Trail attract hikers, cyclists, and horseback riders, and the 275-acre Schmeckle Reserve, on the campus of UW-Stevens Point, is a favorite with birdwatchers, picnickers, and nature enthusiasts.

Winter activities include cross-country and downhill skiing, skating and sledding, while snowmobile riders find plenty of room to explore as well.

DEMOGRAPHICS

Photo Submitted by SPACVB



Population

Current	70,551
2-year growth (est.)	70,784

Source: StatisticalAtlas.com; Wisconsin Department of Administration

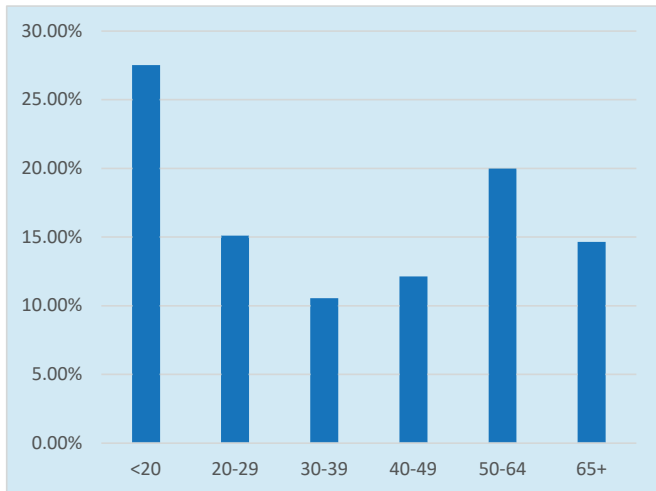
Educational Attainment

Persons Age 25+

Some high school	6.8%
High school graduate or higher	53.2%
Associate's degree	9.8%
Bachelor's degree	20.6%
Graduate degree	9.6%

Source: StatisticalAtlas.com

Age Distribution



Source: StatisticalAtlas.com

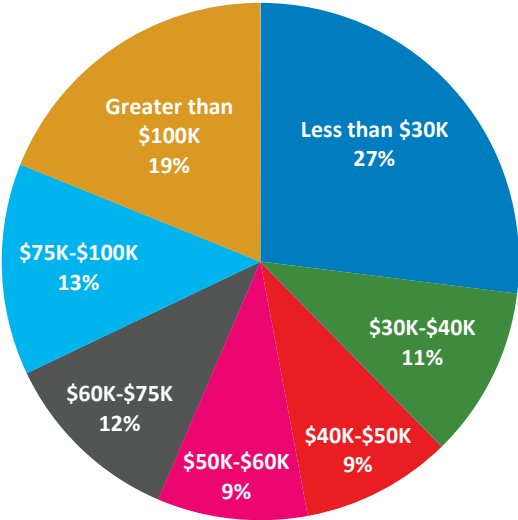
Climate

Avg January daily low	4.4° F
Avg July daily high	81.6° F
Median growing season	May 9 - Sept. 27
Avg annual rainfall	32 inches
Avg annual snowfall	41 inches

Sources: www.wisconline.com, courtesy Midwestern Regional Climate Center; Portage County Business Council



Household Income Distribution



Source: StatisticalAtlas.com

Cost of Living Index Stevens Point

Overall	88/100
Food	97.6/100
Utilities	93.5/100
Miscellaneous	98.6/100
Housing	82/100

Source: Best Places
Cost of living indicies are based on a US average of 100.

Labor Force

Total labor force	58,152
Employed	36,800
Unemployed	2,426
Other	18,926
Unemployment rate	2.6%

Source: StatisticalAtlas.com; Bureau of Labor Statistics

Major Area Employers

Employer	Industry
AIG	Travel
Ascension	Healthcare
Associated Bank	Finance
City of Stevens Point	Government
Del Monte Corporation	Food/Manufacturing
Delta Dental of Wisconsin	Insurance
H.O. Wolding	Freight Transportation
Lands' End	Clothing/Catalog
McCain Foods	Food/Manufacturing
Pointe Precision	Manufacturing
Portage County	Government
Sentry	Insurance
Skyward	IT/Software Development
Stevens Point Area Public School District	Education
UW-Stevens Point	Education
Verso Corporation	Manufacturing
Worzalla Publishing	Manufacturing



Photo Submitted by SPACVB

Photo Submitted by Stevens Point Journal

ACCESS TO OPPORTUNITY

Wisconsin is a large area, and with 65,498 square miles it can be hard to explore everything. Central Wisconsin helps to make that exploration easier. While everything you need is here, the central location provides the unique opportunity for shopping, business growth, adventures, and a lifestyle that can take you anywhere in the state with ease.

Whether it's traveling to a nearby urban center for business or pleasure, or commuting to work, it's easy to get around or head out of town. The same holds true for the goods you manufacture and distribute. Central Wisconsin is ideal for shipping nationally and internationally.

"We have seen our company grow from its initial store here in Stevens Point to thirteen locations across the state. From Stevens Point, I can get to Milwaukee (2.5 hours), Green Bay (1.5 hours), Wausau (0.5 hour), La Crosse (2 hours), Eau Claire (2 hours); conduct a day's business; and return for dinner with my family."

Craig Shuler
President and Founder, DigiCOPY



Home | Auto | Umbrella | Business | Life

800.264.6419

www.community-insurance.com

Auto-Owners
INSURANCE

LIFE • HOME • CAR • BUSINESS



Get Here

Driving

Portage County is located at the crossroads of newly improved State Highway 10, which runs east and west, and along Interstate 39, which runs north and south from the Illinois border south of Madison, to north of Wausau. State Hwy. 29 can be accessed just north of Portage County, which connects the state from the east (Green Bay) to the Twin Cities of Minnesota toward the west. Other east/west highways connecting the region include highways 54 and 66.

Flying

Central Wisconsin Airport (CWA) is our regional airport with daily jet service through Delta, United, and American Airlines. Several flights daily connect business and personal travelers through Minneapolis,

Detroit, or Chicago.

Also available at CWA are full-service car rentals from six national car rental companies.

fly-cwa.org

The City of Stevens Point also offers public airport services through Stevens Point Municipal Airport, located just three miles from the City's central business district.

stevenspoint.com

Rail Transport

Portage County is served by Canadian National Railroad which provides freight services to Canada and destinations in 14 states, including key port facilities. With access to an intermodal facility right here in Portage County, rail transport is a major player in

moving goods into and out of the county. **cn.ca**

Bus Transport

The Stevens Point City Bus includes fixed-route and paratransit service to Stevens Point, Whiting, Park Ridge, and Crossroads Commons in Plover. The transit facility is located in the Portage County Business Park.

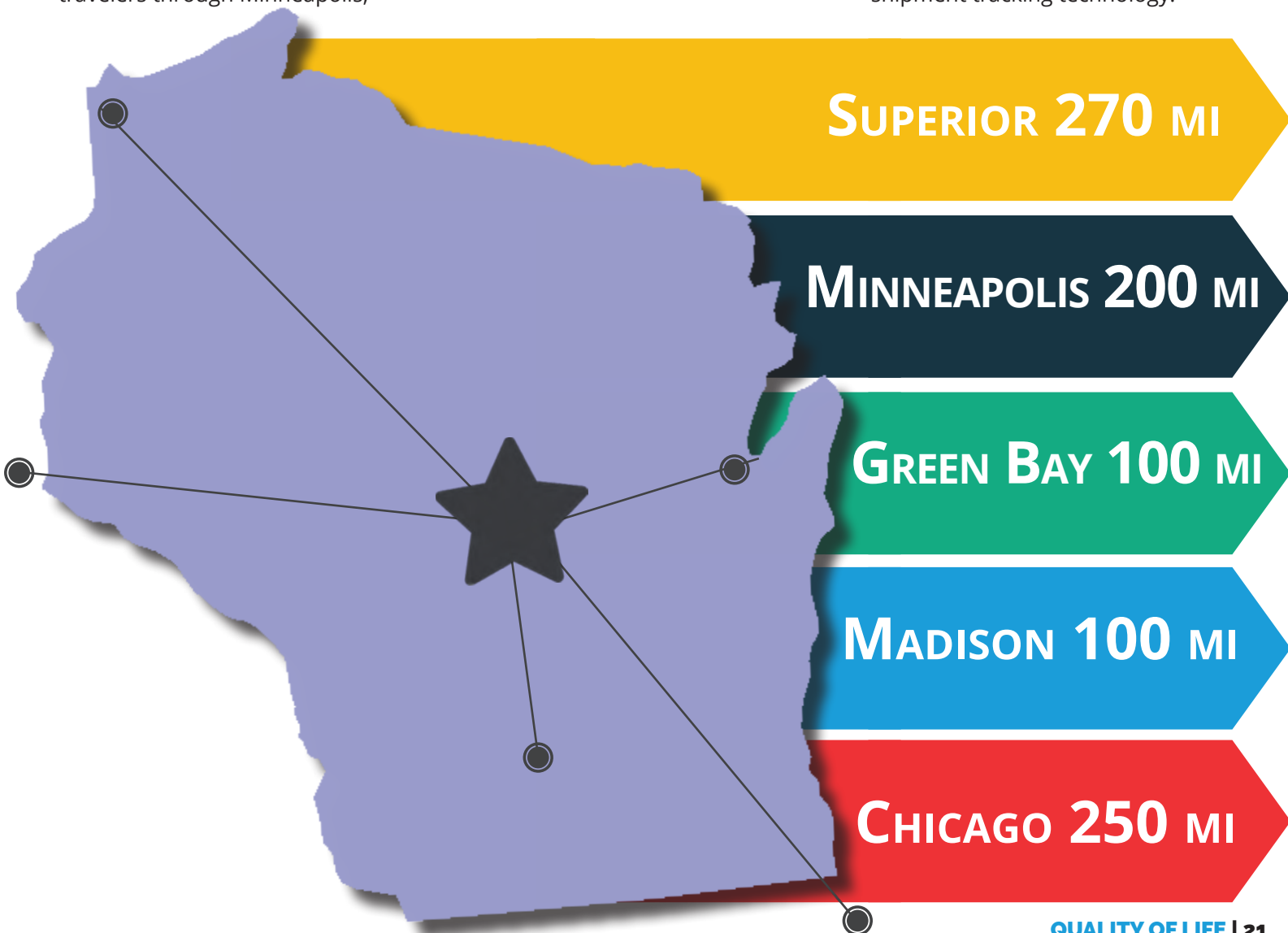
stevenspoint.com

Greyhound bus service is also available.

greyhound.com

Trucking

Our area is served by a number of quality trucking companies which offer short, regional and long-haul services, including state-of-the-art shipment tracking technology.



HEALTH AND WELLNESS

Primary Care Facilities

Personal and family healthcare is vital to quality of life, and in Central Wisconsin there is access to skilled specialists who can meet every need. Pediatricians, physical therapists, surgeons, nurses - whatever the health concerns are, they can help. Trained specialists work to find the best treatments to keep everyone healthy and living the best life possible.

Portage County has numerous clinics and healthcare centers available to service all patients. |The skilled medical staff offer top-level medical assistance to help maintain good health.

There are many additional services such as dentists, vision care providers, and chiropractors. The area also offers non-medical opportunities for activities such as yoga, martial arts, and group exercise.

Area Hospital

Ascension Saint Michael's Hospital is a fully accredited, acute-care facility offering a comprehensive range of services to residents of Portage County.
healthcare.ascension.org

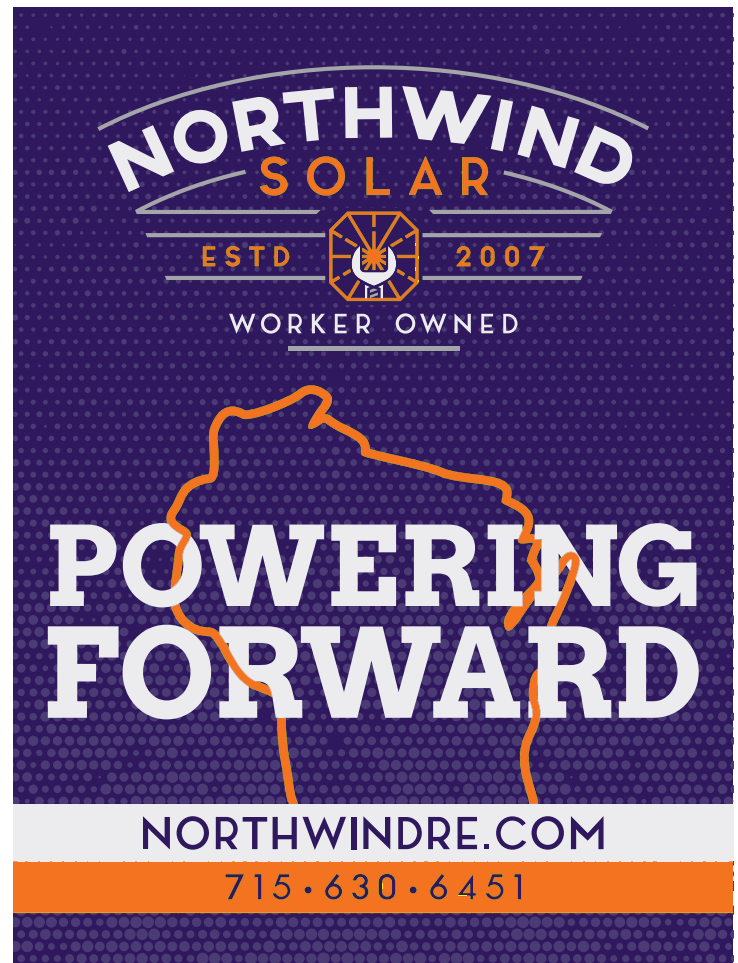


Photo Submitted by SentryWorld

EXPLORE OUR
CAREER
OPPORTUNITIES AT
GAMBERJOHNSON.COM/CAREERS



COMPETITIVE BENEFITS

- Dependent Care Assistance
- Life/Disability Insurance
- Employee Referral Bonus
- Yearly Netflix/Hulu Subscription
- Tuition Reimbursement
- Dependent Scholarship Program
- Medical
- Dental
- Vision

JOIN OUR TEAM

Gamber-Johnson is a leading award-winning worldwide supplier of rugged mounting solutions for fleet vehicles, public safety vehicles, forklifts, and other mobility applications.



3001 Borham Avenue, Stevens Point, WI 54481, U.S.A.
800.487.9220



3325 Business Park Drive
Stevens Point, WI 54482
715.343.9630 • biolifeplasma.com

Download our BioLife Plasma
Services App Today!



We're here for you with:

Unmatched service • Fast, local loan decisions • Free checking
Free ATMs • Convenient online & mobile banking

Stop in to see why we say *Membership Matters!*



2940 Church Street
Stevens Point • 715-341-4543
www.valleycommunities.org



Additional locations in Kronenwetter, Marshfield, Mosinee & Wisconsin Rapids



Photo Submitted by
CREATE Portage County

The advertisement for Happy Harvest Hemp features a circular logo with a daisy flower in the center, the words "HAPPY HARVEST" at the top, and "HEMP NATURE'S ANSWER" at the bottom. To the right, the text "A Large Variety of Hemp, CBD & CBG Products!" is displayed. Below the text are images of two hemp products: a jar of "PANTHER" cream and a bottle of "PURE" CBD oil. The background is a field of white daisies.

1101 Brilowski Rd #B
Stevens Point, WI 54482
715-544-6269
Hours M-F 9-6 | Sat. 9-5



Photo Submitted by SPACVB

A person wearing a white tank top, dark shorts, and a wide-brimmed straw hat is kayaking on a calm lake. They are using a yellow paddle. The water is dark and reflects the surrounding dense green forest. The kayaker is positioned in the center of the frame, moving away from the viewer.

**30 MILES OF
BIKING AND HIKING
ON THE GREEN
CIRCLE TRAIL**

**MORE THAN 40 LAKES
FOR KAYAKING,
CANOEING,
AND SWIMMING**

**HOME TO TOP
RATED MEDICAL
PROFESSIONALS
AND FACILITIES**

Photo Submitted by Lauren Gilchrist



Education

LEARN HERE



QUALITY ACCESS TO QUALITY EDUCATION

“Not being from the area originally, we weren’t sure what to expect from the schools. What we experienced for all of our children was an amazing, supportive learning environment that prepared them well for life after high school.”

**Shannon Lewis
Parent in Plover, WI**

Stevens Point Area Public Schools

For years, the Stevens Point Area Public School District (SPAPSD) has been known throughout Central Wisconsin as an organization that fosters innovation and new concepts in learning.

The District continues this mission to this day, working to enhance student achievement by preparing all children to be successful beyond the classroom, whether they enter higher education or the workforce upon graduating.

The school district consists of nine elementary schools, two junior high schools, one EL Education charter school, two specialized learning schools and one senior high school, serving Stevens Point, Plover, and several surrounding communities.

Pacelli Catholic Schools

Pacelli Catholic Schools (PCS) are a vibrant part of Portage County and the educational community. PCS is the first Catholic school system in the state of Wisconsin to be fully nationally accredited and has won numerous national awards.

PCS has a rich, deep history of faith-first education through an evolving, innovative curriculum aimed at high student academic success.

PCS offers childcare and preschool through high school education at five sites: Pacelli High School, Pacelli Catholic Middle School, Pacelli Catholic Elementary Schools (St. Stephen and St. Bronislava), and Pacelli Catholic Schools Tim Copps Early Childhood Center.

Rosholt School District

The Rosholt School District is located in Central Wisconsin and serves a student population of approximately 650 Pre-K to 12th grade students in a single facility in the Village of Rosholt.

The area enjoys close proximity to Wausau and Stevens Point which allows residents and students to take advantage of cultural and educational opportunities while still enjoying the rural small town atmosphere.

Because the school is small, discipline problems are minimized; there is continuity in learning from four-years-of-age through high school; and there is a strong sense of friendliness through positive reinforcement of accomplishments.

Amherst Tomorrow River School District

The School District of the Tomorrow River prides themselves on a quality child-centered education.

With a 4K-12 grade student population of approximately 1,000 students, supported by 78 teachers, 51 support staff, and 3 administrators, the District is able to provide children and their families with personalized service.

Your child and family are more than a number to Tomorrow River School District - you are part of their extended family.



**COLLEGE
POSSIBLE™**

College Possible is proud to serve SPASH students on their journey to a college degree.

Learn more about us at CollegePossible.org

*Fostering Student Engagement,
Growth and Learning*

*Developing and Retaining
Quality Staff*



Prepare Each Student to be Successful

*Responsibly Managing Finance,
Facilities and Operations*

*Connecting School, Family and
Community*



Small Business Program Offerings

Business Education Series

Free four-part series offered annually with participating business chambers and economic development organizations. Various business topics, dates, and locations. uwsp.edu/SBDC/BES

Entrepreneurial Training Program

Nine week program to develop full business plan and financials. Spring and fall offerings available in Stevens Point, Wausau, and Antigo. Scholarship grant available to cover 75% of program fees. uwsp.edu/ETP

Digital and Social Media Conference

Day long conference full of digital marketing and social media tips and tricks. Offered annually each April at UW-Stevens Point. uwsp.edu/CWDSMC

For more info or to register, visit the event web pages.
uwsp.edu/sbdc uwspce-sbdc@uwsp.edu 715-346-3838



**University of Wisconsin
Stevens Point**



Photo Submitted by Lauren Gilchrist

University of Wisconsin-Stevens Point

Ranked among Top 10 Public Universities in the Midwest by *U.S. News and World Report*, the University of Wisconsin-Stevens Point is continually recognized for developing, supporting, and educating students.

UW-Stevens Point offers more than 140 undergraduate degree programs, 15 graduate programs, two doctoral programs and a brand-new MBA program. Classes are offered at three campuses: Stevens Point, Wausau, and Marshfield, and some programs are provided 100 percent online.

As part of its educational mission, UW-Stevens Point promotes and supports community engagement, critical thinking, diversity and inclusivity, lifelong learning, professional preparation, research, scholarly and creative activity, student-centered environments, and sustainable management of natural resources, in addition to other educational priorities. UW-Stevens Point is also home to the nation's largest undergraduate College of Natural Resources.

Mid-State Technical College

Mid-State serves the diverse and changing educational needs of central Wisconsin communities. The College offers a range of opportunities for people across all walks of life, such as recent high school graduates just beginning their college experience, for those wishing to transfer to a four-year college or university, for others wanting to change or enhance their careers, and for those who depend upon the college for learning in their "leisure years."

Mid-State Technical College offers a wide variety of in-demand associate degrees, technical diplomas, and certificates. The College has campuses in Stevens Point, Marshfield, and Wisconsin Rapids, and Adams.

Mid-State Technical College provides affordable tuition and opportunities to easily transfer credits to four-year colleges and universities.

Lakeland University-Central Wisconsin Center

Lakeland University knows all the reasons why people think going back to school may not be possible. It's time to change that thinking.

Lakeland makes it easier for people to act on their aspirations. Most of Lakeland's courses are offered in the BlendEd® format, which allows students to take classes in person, access courses and complete work entirely online, or a mix of both.

Courses are conveniently offered at Mid-State Technical College's Wisconsin Rapids and Marshfield centers, as well as in Wausau and Stevens Point, in addition to being available online.

Lakeland's evening, weekend, and online program has awarded bachelor's and master's degrees to thousands of students.




Housing

LIVE HERE

A PLACE TO CALL HOME

Portage County offers homebuyers a wide choice of neighborhoods with prices well below the national average. There are properties for purchase and lease to suit every taste and budget, from starter houses to modern executive homes and country farmhouses with acreage. Fans of historic homes will find examples of Victorian, Prairie, and Federal Revival styles priced according to their size, location, and condition.



“Gratification and happiness are becoming important measures of our quality of life. Quality of life actually begins at home - its in your street, around your community.”

Charles Kennedy
Parliamentarian, United Kingdom

Photo Submitted by Sunset Point Winery

Welcome Home!

New high-end, multi-family residential opportunities can be found in Plover and downtown Stevens Point. These opportunities are growing and are highly sought after!

Community groups are focused on providing urban living environments for those who like easy access to shopping and dining in a downtown setting.

College students, young professionals, and an influx of new residents have kept the demand for apartment rentals strong.

Rentals include one-bedroom, one-bath to four-bedroom, multi-bath, and luxury units with amenities like clubhouses, on-site fitness centers, and swimming pools.

Recognized nationally as a top community for retirement, Portage County's high quality of life, scenic surroundings, and excellent access to cultural activities and healthcare providers make it a great choice for retirees seeking an affordable place to relocate.

Single-family homes, condos, duplexes, apartments, and independent living residences for those 55 and over are available.

For those seeking a balance of independence and support, a number of quality assisted-living communities in the Stevens Point area provide short- and long-term care options, which include 24-hour skilled nursing, hospice, and respite care.



Photo Submitted by SPACVB

Putt-n-Play is Stevens Point's only indoor mini golf course, outdoor laser tag and arcade.



715-544-1902
701 Second St. North
Stevens Point, WI



Photo Submitted by PCBC

Call for a **Free Water Test!**

Family Owned Since 1950

MAHER WATER CORPORATION

maherwater.com 715-344-2900

Like us on Facebook



FIRSTWEBER

— REALTORS® —

a Berkshire Hathaway affiliate

FIRSTWEBER.COM

Leading
REAL ESTATE COMPANIES
OF THE WORLD

AMAZE IS WHAT WE DO!

list with us... buy with us...

**WE LEAD THE MARKET
in WI & the Stevens Point area.**

Source: Central Wisconsin Multiple Listing Service.

**Contact a First Weber
Stevens Point Agent and
MOVE FORWARD WITH EASE!**

5424 Hwy 10 E., Stevens Point

715-341-6688

FIRSTWEBER.COM



Text: **DETAILS**
To: **67299**
For More Property Information



FIRSTWEBER
— REALTORS® —

SOLD

Not intended to solicit presently listed properties.



Photo Submitted by Feltz's Dairy Store

A man wearing a black hoodie with a red collar, a brown baseball cap with a red 'M' logo, and black pants is standing on a grassy field. He is holding a black disc with a red logo in his right hand. The background shows a grassy field and a metal structure, possibly a swing set. A yellow diagonal stripe is visible in the top right corner.

Fun

CELEBRATE HERE

EAT, DRINK, AND BE MERRY

No matter your age or place in life, there is plenty to do in Portage County, with numerous entertainment and recreational opportunities. Whether you are interested in activities for small children or weekend warriors, or in casual sports or cultural activities, you can find it here!

Indoor Experiences

There are endless cultural opportunities with the Central Wisconsin Symphony Orchestra, the Central Wisconsin Area Community Theater, multiple art museums, and various live music venues.

From craft breweries, distilleries, and wineries to festivals and nearby casinos, there is no shortage of choices for a fun night out!

Active options include an interactive children's museum and sports activities such as indoor mini golf, batting cages, and bowling alleys.

Outdoor Experiences

Looking for fun outside while enjoying all four seasons? Central Wisconsin is a recreational wonderland year-round!

For some of the best fishing in Wisconsin, cast a line from a boat or dock in one of several public lakes, or in one of the three rivers running through the area. The mighty Wisconsin River, Plover River, and Tomorrow River all offer guaranteed angling success as well as swimming, waterskiing, kayaking, and canoeing.

Outdoor pursuits golfing at any of the area's three premier golf courses, hiking across hundreds of miles of trails, discovering hidden treasures along the various bike paths, horseback riding, or simply sitting outside and enjoying music at an outdoor concert.

Outdoor diversions don't slow down in the winter. Opportunities such as cross-country and downhill skiing, ice skating, sledding, and snowmobiling are great ways to enjoy the winter months.

Local parks also provide residents with plenty of choices, from fitness trails and playgrounds to horseshoe pits, shooting ranges, softball diamonds, and dog exercise areas.

Photo Submitted by Stevens Point Journal



Stay Here

Cobblestone Hotel & Suites

1117 Center Point Dr.
Stevens Point, WI 54481
715-343-0522
staycobblestone.com

Country Inn & Suites

301 Division St. N
Stevens Point, WI 54481
715-345-7000
radissonhotels.com

Days Inn & Suites

159 Division St. N
Stevens Point, WI 54481
(715) 254-8685
wyndhamhotels.com

Fairfield Inn & Suites by Marriott

5317 U.S. 10 E
Stevens Point, WI 54482
715-342-9300
marriott.com

Hampton Inn

3090 Village Park Dr.
Plover, WI 54467
715-295-9900
hilton.com

Holiday Inn Hotel & Convention Center

1001 Amber Ave.
Stevens Point, WI 54482
715-344-0200
ihg.com

LaQuinta by Wyndham

4917 Main St.
Stevens Point, WI 54481
715-344-1900
wyndamhotels.com

River's Edge Campground

3266 Campsite Dr.
Stevens Point, WI 54482
715-344-8058
riversedgewisconsin@yahoo.com

Eat Here

Altenburg Dairy Ice Cream Parlor

2041 Madison St.
Stevens Point, WI 54481

Amber Grill

1001 Amber Ave.
Stevens Point, WI 54482
715-344-9808
ambergrillrestaurant.com

Arby's Restaurant

5700 U.S. 10 E
Stevens Point, WI 54482
715-342-0950

3115 Church St.
Stevens Point, WI 54481
715-345-7888
arbys.com

Backcountry Brewing Co.

3252 Mecca Dr.
Plover, WI 54467
715-252-5981
backcountrybrewingco.com

Buffalo Wild Wings

5370 US Hwy 10 E, Suite H
Stevens Point, WI 54482
715-344-3287
buffalowildwings.com

Bullhead's Bar & Grill

3368 Campsite Dr.
Stevens Point, WI 54482
715-344-5990
bullheadsbargrill.com

Cousins Subs

641B North Division St.
Stevens Point, WI 54481
715-295-9650
cousinssubs.com

Culver's Restaurant

332 Division St.
Stevens Point, WI 54481
715-544-6684
culvers.com

5346 U.S. 10 E
Stevens Point, WI 54482
715-341-8666

1805 Plover Rd.
Plover, WI 54467
715-544-1327

El Mezcal

5741 Windy Dr.
Stevens Point, WI 54482
715-342-1521

Grazies Italian Grill

5327 U.S. 10 E
Stevens Point, WI 54482
715-345-7808
graziesitaliangrill.com

Great Northern Distilling

1740 Park Ave.
Plover, WI 54467
715-544-6551
greatnortherndistilling.com

Ho-Chunk Gaming

949 County Road G
Nekoosa, WI 54457
715-886-4560
ho-chunkgaming.com/nekoosa

Kwik Trip

1600 Maria Dr.
Stevens Point, WI 54481
715-342-1114
kwiktrip.com

3533 Stanley St.
Stevens Point, WI 54481
715-341-2167

3258 Church St.
Stevens Point, WI 54481
715-295-0127

5311 Old Hwy 18
Stevens Point, WI 54482
715-344-6623

1900 Post Rd.
Plover, WI 54467
715-341-2185

2511 Plover Rd.
Plover, WI 54467
715-344-0772

5339 Harding Ave.
Plover, WI 54467
715-344-7252



Photo Submitted by PCBC

Matsu Ya Sushi & Grill

5725 Windy Dr., Suite A
Stevens Point, WI 54482
715-341-8893

Mission Coffee House

2860 Post Rd.
Plover, WI 54467
715-544-0730
missioncoffeehouse.com

Mitchell's Hilltop Pub & Grill

4901 Main St.
Stevens Point, WI 54481
715-341-3037
hilltoppubandgrill.com

Monk's Bar & Grill

1400 Commerce Pl.
Plover, WI 54467
715-544-6615
monksbarandgrill.com

Muse at Sentry

1800 Northpoint Dr.
Stevens Point, WI 54481
715-346-1800
experiencemuse.com

Next Degree Cafe

3217 John Joanis Dr.
Stevens Point, WI 54482
715-343-0212
212fitnessclub.com/next-degree

Papa John's Pizza

101 Division St. N
Stevens Point, WI 54481
715-972-1414
papajohns.com

Pizza Ranch

1300 Commerce Pl.
Plover, WI 54467
715-544-1644
pizzaranch.com

PJ's - SentryWorld

601 Michigan Ave N.
Stevens Point, WI 54481
715-345-1600
sentryworld.com

Plover VFW Post 10262

2970 Hickory Dr.
Plover, WI 54467
715-341-8414
plovervfw.org

Point After Pub & Grill

801 2nd St.
Stevens Point, WI 54481
715-344-7222
pointafterpub.com

QDOBA Mexican Eats

5347 U.S. 10 E
Stevens Point, WI 54482
715-203-8953
qdoba.com

Stevens Point Country Club

1628 Country Club Dr.
Stevens Point, WI 54481
715-345-8900
stevenspointcountryclub.com

Subway

28 Park Ridge Dr.
Stevens Point, WI 54481
715-342-4408
subway.com

135 N. Division St. Unit H
Stevens Point, WI 54481
715-341-7777

5601 Carrie Frost Dr.
Stevens Point, WI 54482
715-544-4436

Subway

1201 Badger Ave.
Stevens Point, WI 54482
715-295-0804

3296 Church St.
Stevens Point, WI 54481
715-544-6344

2551 Plover Rd.
Plover, WI 54467
715-341-6660

The Iron Grille

604 Water St.
Iola, WI 54945
715-445-0044
theirongrille.com

Tulum Mexican Restaurant Bar & Grill

3066 Village Park Dr.
Plover, WI 54467
715-544-4126

Whitetail Lanes Bar & Grill

3689 County Road Q
Amherst Junction, WI 54407
715-824-3108
whitetaillanes.com

Wisconsin River Golf Club

705 West River Dr.
Stevens Point, WI 54481
715-344-9152
golftheriver.com

Wissota Chophouse

1117 Center Point Dr.
Stevens Point, WI 54481
715-295-7273
wissotachophouse.com

Catering

Rockman's Catering
2807 Plover Springs Dr.
Plover WI 54467
715-341-2552
rockmanscatering.com

The establishments listed here are Portage County Business Council Members.
For a complete listing of area dining, lodging, and shopping, please visit: everythingpointshere.com

Shop Here

Amherst Marine, Inc.
422 South Main St.
Amherst, WI 54406
715-824-5635
amherstmarine.com

**Awards & Gifts by
Point Trophy LLC**
2134 Patch St.
Stevens Point, WI 54481
715-344-7236
pointtrophy.com

Bancroft Plasma and Metal LLC
5853 County Road W
Bancroft, WI 54921
715-459-1488
bancroftplasma.com

Batteries Plus Bulbs
5501 U.S. 10 E
Stevens Point, WI 54482
715-295-0388
batteriesplus.com

BB's Aquatic Service LLC
3501 Church St.
Stevens Point, WI 54481
715-560-9203
BBsAquatics.com

Bev's Floral & Gifts
492 Division St.
Stevens Point, WI 54481
715-345-1661
flowersbevsfloral.com

Bria Bella & Co.
925 Main St.
Stevens Point, WI 54481
715-575-2000
briabellaco.com

CBD American Shaman
1180 Meridian Dr.
Plover, WI 54467
715-295-0688
cbdamericanshaman.com

Central Door Solutions
1430 Contractors Blvd.
Plover, WI 54467
715-342-4153
centraldoorsolutions.com

Copps Food Center
1850 Plover Rd.
Plover, WI 54467
715-342-0011
copps.com

Designers 2
3233 #1 Business Park Dr.
Stevens Point, WI 54482
715-341-7761
designers2.com

Feltz's Dairy Store
5796 Porter Dr.
Stevens Point, WI 54482
715-344-1293
feltzsdairystore.com

Frank's Hardware
5444 U.S. 10 E
Stevens Point, WI 54482
715-344-4191
frankshardware.doitbest.com

Furniture and ApplianceMart
1015 Commons Cir.
Plover, WI 54467
715-344-7700
furnitureappliance.com

Girls in Pearls Boutique, LLC
1016 Main St.
Stevens Point, WI 54481
715-345-7819
girlsinearlsboutique.com

Goodwill NCW
1017 Commons Cir.
Plover, WI 54467
715-544-6637
goodwillncw.org

Heid Music
3201 Main St.
Stevens Point, WI 54481
715-423-1000
heidmusic.com

Herrschners Inc.
2800 Hoover Rd.
Stevens Point, WI 54481
715-341-8686
herrschners.com

Hostel Shoppe
3201 John Joanis Dr.
Stevens Point, WI 54482
715-341-2453
hostelshoppe.com

**Lakeland Overhead
Door Corporation**
4925 Coye Dr., Suite C
Stevens Point, WI 54481
715-341-7222
lakelanddoor.com

**Lee Ayers Jewelers
Custom Goldsmith**
1044 Main St.
Stevens Point, WI 54481
715-341-0411
ayersjewelers.com

Mada Custom Apparel
5533 Clem's Way
Stevens Point, WI 54482
715-341-1773
madacustom.com

Metro Market
1500 Pinecrest Ave.
Stevens Point, WI 54481
715-345-1937
metromarket.net

Mills Fleet Farm
5590 U.S. 10 E
Stevens Point, WI 54482
715-341-5100
fleetfarm.com

Precision Cellular & Sound
87 Sunset Blvd.
Stevens Point, WI 54481
715-343-8000
precisioncell.com

Real Deals on Home Decor
817 Clark St.
Stevens Point, WI 54481
715-997-9198
realdeals.net

Sam's Club
4000 Rib Mountain Dr.
Wausau, WI 54401
715-359-0044
samsclub.com

**Sherwin Williams Paint
Store**
5600 Carrie Frost Dr.
Stevens Point, WI 54482
715-344-4630
sherwin-williams.com

Ski's Meat Market
5370 U.S. 10 E, Suite C
Stevens Point, WI 54482
715-344-8484
skismeatmarket.com

**Slumberland Furniture-
Stevens Point**
5720 Windy Dr.
Stevens Point, WI 54482
715-342-9393
slumberland.com

Star Business Machines Inc
3709 Patch St
Stevens Point, WI 54481
715-341-5919
starbusinessmachines.com

Stevens Point Brewery
2617 Water St.
Stevens Point, WI 54481
715-344-9310
pointbeer.com

Sweet Tea Clothing Co.
176 Crossroads Dr.
Plover, WI 54467
(715) 570-6832
facebook.com/sweet-tea-clothing-
co-plover

The Bottle Stop, LLC
35 Park Ridge Dr.
Stevens Point, WI 54481
715-341-7400
facebook.com/pg/thebottlestop1

Walgreens
10 Park Ridge Dr.
Stevens Point, WI 54481
715-344-7368
walgreens.com

3301 Church St.
Stevens Point, WI 54481
715-345-2843

Walmart Supercenter
250 Crossroads Dr.
Plover, WI 54467
715-345-7855
walmart.com

Love Life Here

The majestic Wisconsin River runs through the area, providing landscapes and recreation that cannot be beat.

It is home to the WORLD'S LARGEST trivia contest.

Well-groomed and exquisitely maintained walking paths, bicycle trails, and snowmobile routes provide year-round exploration.

Located in Stevens Point, SentryWorld Golf course is a top-rated course, and recent host of the U.S. Girl's Junior Championship.

UW-Stevens Point and Mid-State Technical College are located at the center of it all and provide quality educational opportunities for people of all ages.

Easy access to fresh cheese curds, frozen custard, homemade ice cream, and gourmet bratwurst - the stuff that dreams are made of!

The average home-to-work commute is 17 minutes.

You can choose your fun with disc golf, mountain biking, bowling, curling, tennis, swimming, laser tag, and more!

We celebrate local innovators at summer and winter farmers' markets, makers markets, and entrepreneurial labs.

The area has 6 craft breweries, multiple wineries, and a distillery - need we say more?

YOUR HOMETOWN CASINO!



SLOTS | TABLE GAMES | DINING | FREE SHUTTLE | VETERANS PROGRAM

At Ho-Chunk Gaming Nekoosa friends come together to find an exciting atmosphere that will create memories for anyone who walks through our doors. In Central Wisconsin you can try over 600 slot machines, an assortment of table games, two dining venues and a full service bar. Our casino offers a variety of unique promotions, entertainment and a free shuttle service.

EXPERIENCE THE DIFFERENCE!

HO-CHUNK  **GAMING**
NEKOOSA

949 CTY RD G, NEKOOSA, WI 54457 | 800.782.4560 | HO-CHUNKGAMING.COM/NEKOOSA