



Portage County, WI

Community Profile

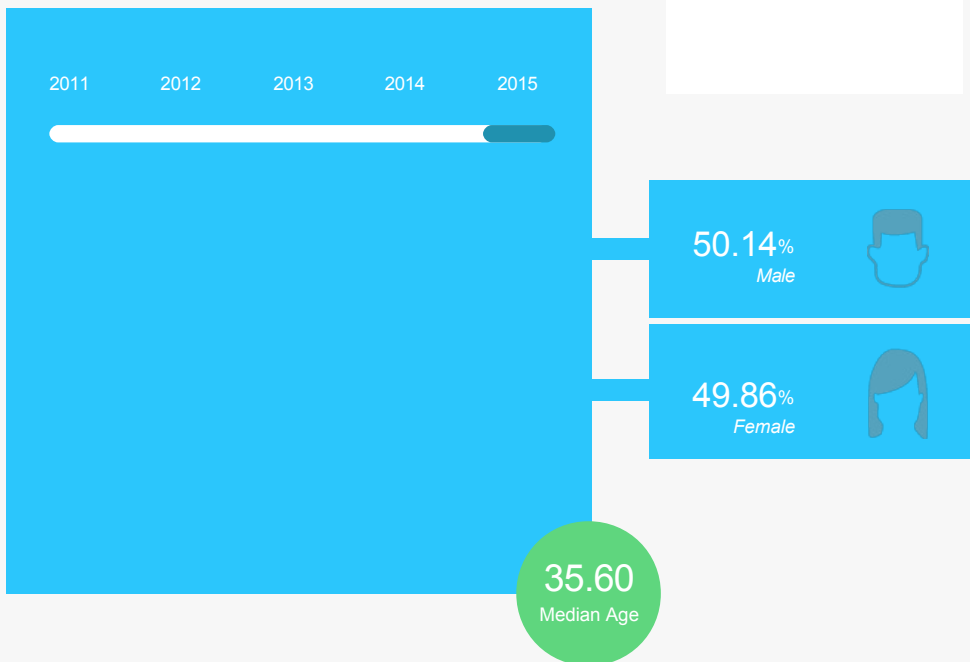
TOTAL
POPULATION
70,193

The total population of the County of Portage County is 70,193. The median age is 35.60.



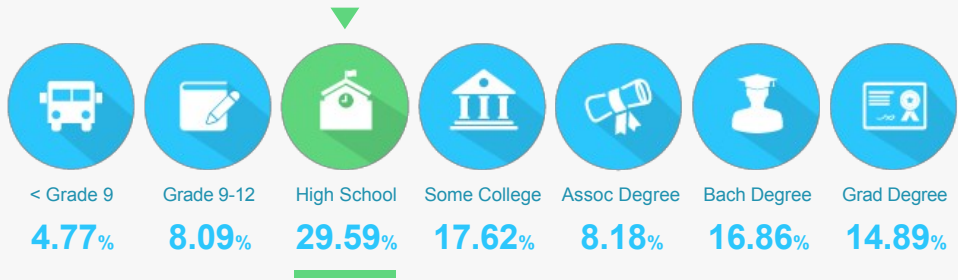
The population in Portage County has decreased -0.77% since 2011.

Age Distribution



EDUCATIONAL ATTAINMENT

The majority of the population in Portage County has completed at least a high school degree.



39.93%
of the population
has a college degree.



offer Associate's Degree
or Certificate



offer Bachelor's Degree
or Higher

LABOR FORCE

39,036

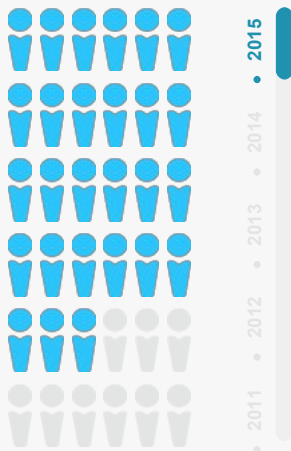
Portage County has a labor force of 39,036 people, with a job growth rate of 4.29% since 2014, and an unemployment rate of 4.8%.

JOB GROWTH

4.29%

Since 2014

TOTAL EMPLOYEES



42,711
2015

The work distribution of total employees in Portage County is.

57%
Blue Collar

42%
White Collar

4.8%

Unemployment Rate

-19%

Since 2014

5 TOP TALENT

Where are the top jobs by occupation?

Office and Administrative support



16.16%

6,904

Executive, Managers, and Administrators



10.34%

4,417

Food Preparation/Serving



5.55%

2,369

Sales



11.07%

4,728

Production Workers



10.27%

4,385

TOTAL ESTABLISHMENTS

3,255

BUSINESSES AND JOBS

Portage County has a total of 3,255 businesses. In 2015, the leading industries were:

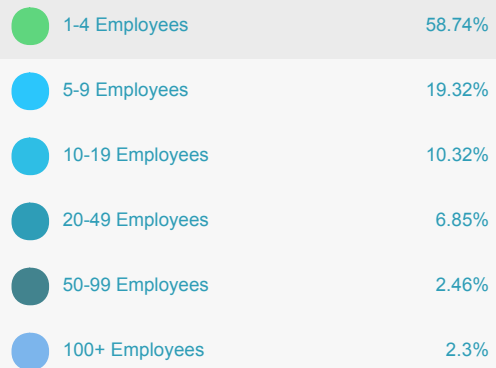
Manufacturing, Retail, Health Care and Social Services, Accommodation and Food Services, and Public Administration

Which are the top 5 industries by jobs?



How many employees do businesses in Portage County have?

1-4
employees



INCOME AND SPENDING

Workers in Portage County earn a median yearly household income of \$50,416. 41.7% of the households earn more than the national average each year. Household expenditures average \$50,158 per year. The majority of earnings get spent on Shelter, Transportation, Food and Beverages, Health Care, and Utilities.

There are 119% more households who own their homes than there are renters.



MEDIAN
**HOUSEHOLD
INCOME**
\$50,416

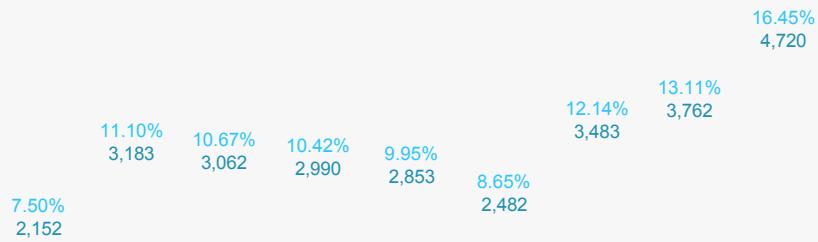
3%

less than the
state

8%

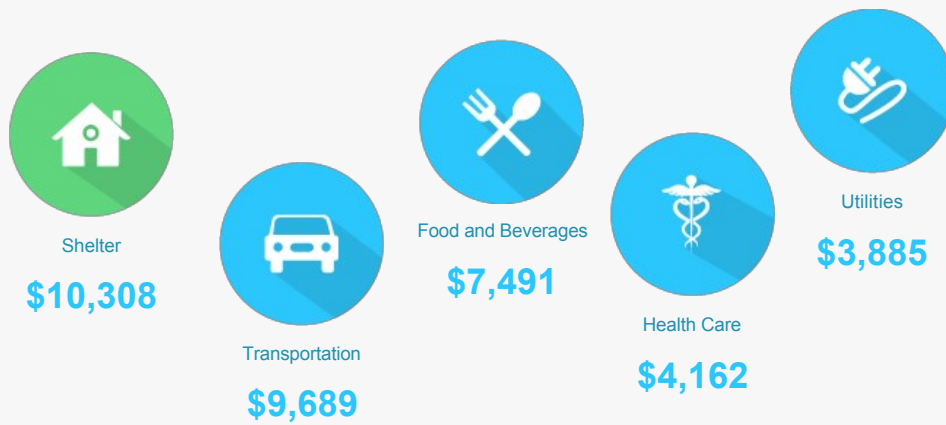
less than the
nation

Income Distribution



How do people spend much of their money?

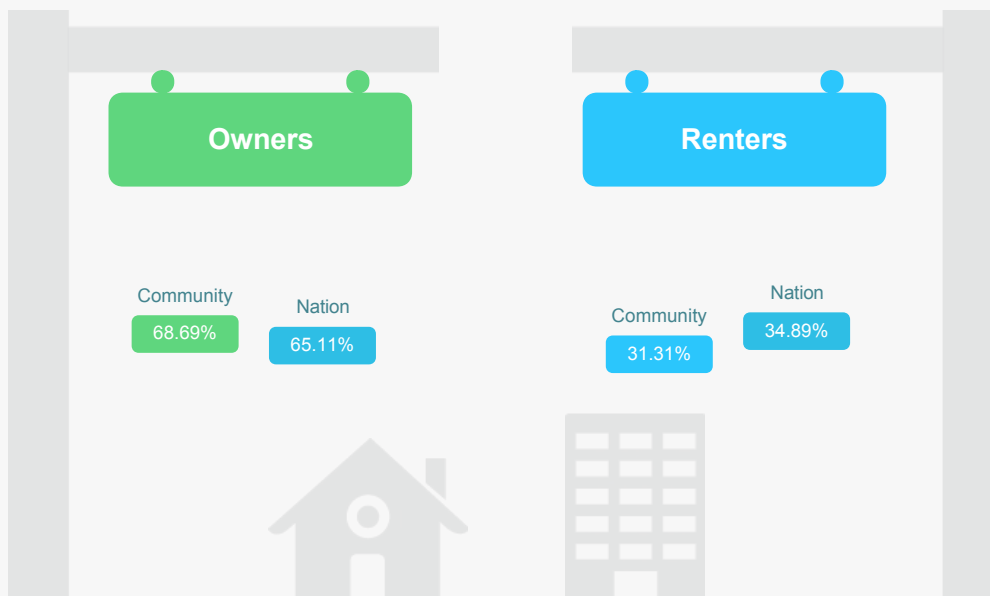
\$ PER HOUSEHOLD



The average household expenditure in Portage County is:

\$50,158

HOUSING



TRANSPORTATION

Residents spend an average of 19 minutes commuting to work. Portage County is served by 31 airports within 50 miles. Rail can be accessed within the community. Interstates can be accessed within the community.



19min.

Commute Travel Time

Interstate

In Community



1

Airports in Community

31

Airports in Community (+50 miles)



Freight Rail

In Community