

ODOT - COLUMBUS STATE COMMUNITY COLLEGE

# Construction Inspection Workforce Program

## READY TO GET STARTED?

To apply for admissions at Columbus state, complete an online application at [www.csc.edu/apply](http://www.csc.edu/apply).  
Columbus State Community College Admissions  
Columbus Campus – Madison Hall, lower level  
**614-287-2669**  
Delaware Campus – Moeller Hall  
**740-203-8345**

## FOR FINANCIAL AID ASSISTANCE:

Visit the Office of Financial Aid's website at  
<http://www.csc.edu/services/financial-aid>

*For more information on the*  
**ODOT - COLUMBUS STATE  
COMMUNITY COLLEGE  
Construction Inspection  
Workforce Program (CIWP):**

Visit our program's website at  
[www.csc.edu/CIWP](http://www.csc.edu/CIWP)

### Surveying Coordinator:

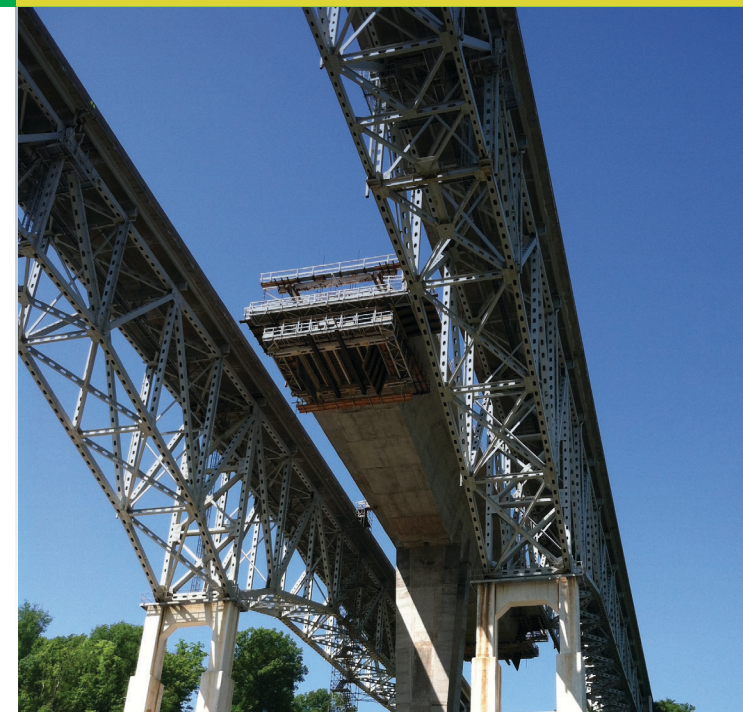
**Jon Link, P.S.**  
[jlink@csc.edu](mailto:jlink@csc.edu) • 614-287-5949

### Advisors:

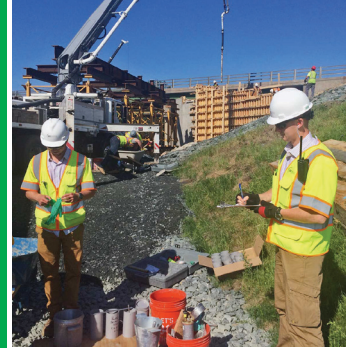
**Nichole Braun, Ph.D**  
[nbraun@csc.edu](mailto:nbraun@csc.edu) • 614-287-5692

**Allison Deverteuil, M.S.E.**  
[adeverte@csc.edu](mailto:adeverte@csc.edu) • 614-287-2832

Email your questions to [construct@csc.edu](mailto:construct@csc.edu)  
or call **614-287-5034**



# ODOT - COLUMBUS STATE COMMUNITY COLLEGE CONSTRUCTION INSPECTION WORKFORCE PROGRAM (CIWP)



The Construction Workforce Inspection Program provides a basis for entry-level employment as a transportation Construction Inspector. The Program includes three components – College Coursework, Certifications and a Formal Internship on ODOT related Projects.

The Program includes:

- College Coursework of 36 credit hours in Civil Engineering Technology, Surveying, and Construction Management
- National Institute for Certification in Engineering Technologies (NICET) Highway Construction Levels I & II Certification preparation
- American Concrete Institute (ACI) Level I Concrete Field Testing Technician – Grade I Certification
- Ohio Aggregate Level I Certification
- Tests for Flexible Pavement and Traffic Work Zone Safety
- 12 Month Formal Internship on ODOT related projects

Program graduates are prepared to work for ODOT prequalified consulting companies on ODOT related projects that include state, federal or local funding.

## SALARIES

Starting to 5 years experience \$46,000 - \$50,000

***Upon completion of the the Construction Inspection Workforce Program, the graduate will be able to:***

- Inspect construction projects to ensure contractor compliance with specifications, plans, standards and/or proposals for roadway work, roadway, drainage, pavement, water works, electrical, maintenance of traffic, traffic work zone, pavement markings, traffic control, signing, demolition and clearing, foundations for embankment, sub-grades, guardrails and/or median barriers, landscaping, slope protection, detours, etc.
- Perform on-site testing of concrete, soil and asphalt compaction; collect samples of aggregates, tack coat, topsoil, seed, etc.
- Verify plan quantities and calculations with as bid plans.
- Prepare and maintain project records and reports including daily diaries, inspection reports, pay item quantities, contractors construction methods, material testing & inspection.
- Notify the Contractor of non-conforming work.
- Perform data entry into construction management systems.
- Perform quantity takeoffs and estimates for work completed to compare with contractor pay requests.
- Assess work zone traffic setups for conformance to plans, specifications and standards to maintain safety in work zones.

## CONTINUE YOUR EDUCATION

*Degrees Include:*

- Associate of Applied Science in Civil Engineering Technology
- Associate of Applied Science in Surveying
- Associate on Applied Science in Construction Management

## CONTINUE YOUR OPPORTUNITIES

- Project Structure Inspector – Additional 40 Months Experience & National Institute for Certification in Engineering Technologies (NICET) Highway Construction Level III
- With additional certifications and internships, opportunities as a Coatings Inspector, Traffic Signal and Lighting Inspector, Soils and Aggregate Inspector

*In cooperation with*



# ACEC

AMERICAN COUNCIL OF ENGINEERING COMPANIES  
of Ohio