

## 5 PILLARS TO SUCCESS



### ENHANCE MITCHELL

Recreation, tourism,  
& place-making



### REGIONAL LEADERSHIP

Position Mitchell as a  
regional leadership  
center



### EDUCATIONAL HOTSPOT

Emphasize innovation  
opportunities



### INCLUSIVITY & SUPPORT

Foster a supportive  
& inclusive community  
culture



### STRENGTHEN INDUSTRY CLUSTERS

Strengthen the Tech.,  
ag. and other industry  
clusters in & around  
Mitchell

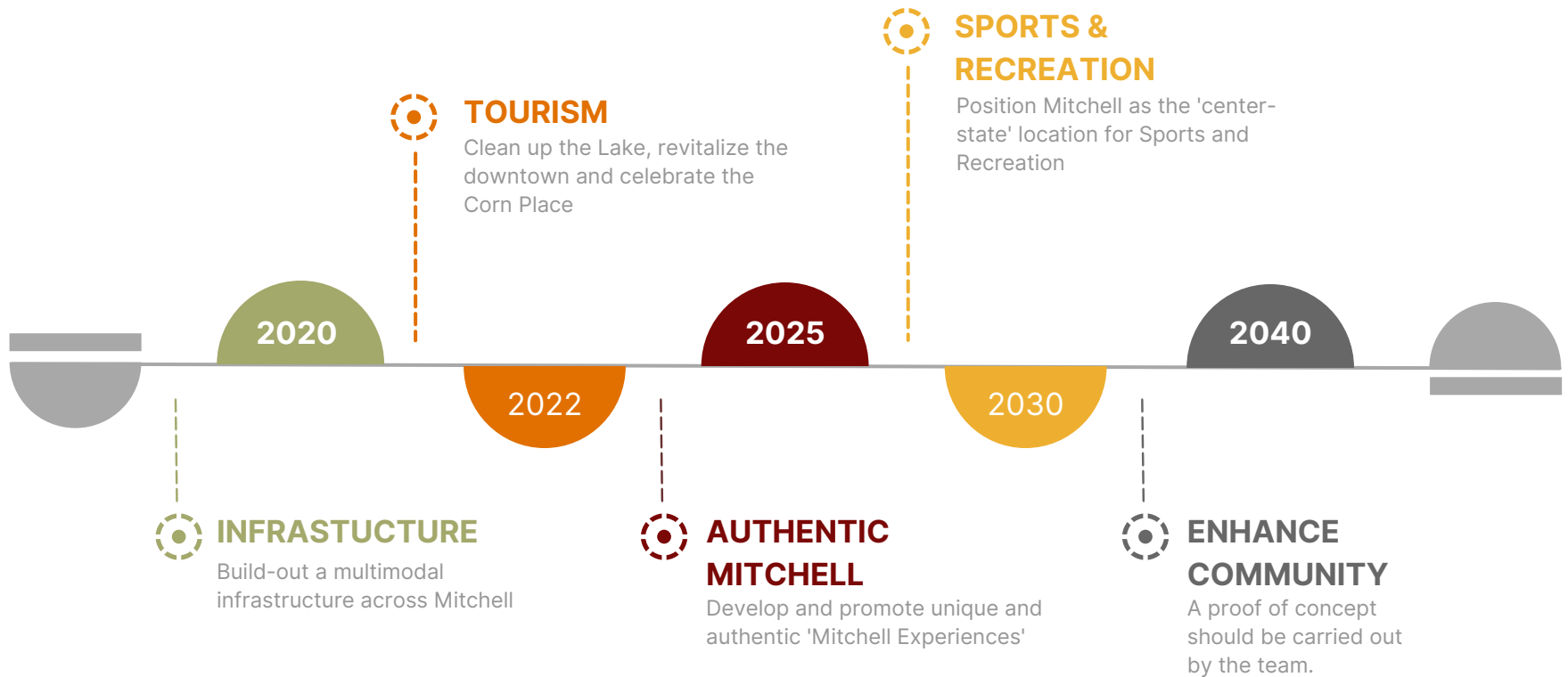
## Mission

**THE COMMUNITY VISION PRESENTS A SERIES OF STRATEGIC ACTIONS THAT CAN BE ACHIEVED IN THE SHORT TO MEDIUM-TERM THAT WILL PRODUCE LONG-TERM RESULTS.**

# Enhance Mitchell

## Evolve Mitchell's Recreation, Tourism, and Place-making

To enhance Mitchell, it will require clear and consistent communication from community leaders and the community that loves and shares value in the City of Mitchell.



# Regional Leadership

## Position Mitchell as a Regional Leadership Center

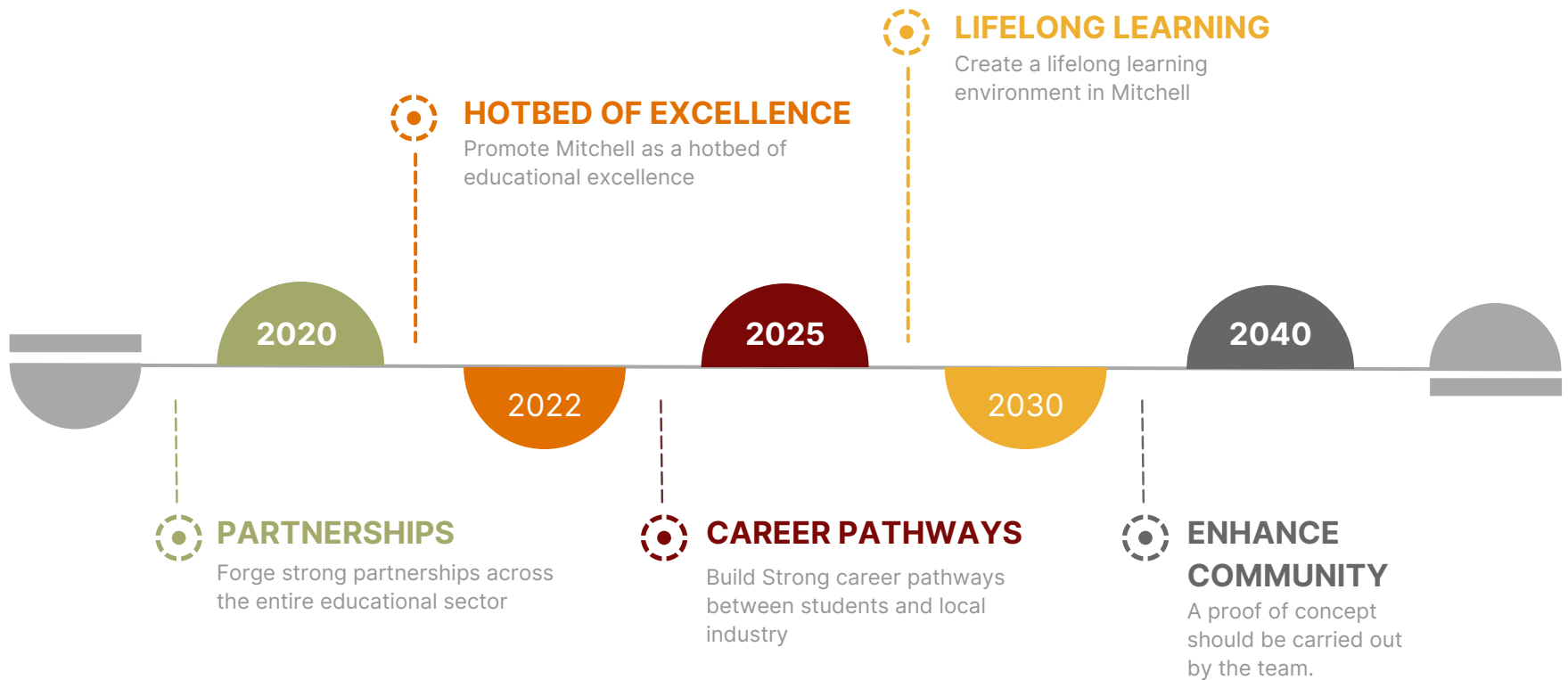
For Mitchell to become the desired regional leadership center it will require significant collaborative initiatives by community leaders.



# Educational Hot Spot

## Create Educational Hot Spot Emphasizing Innovation

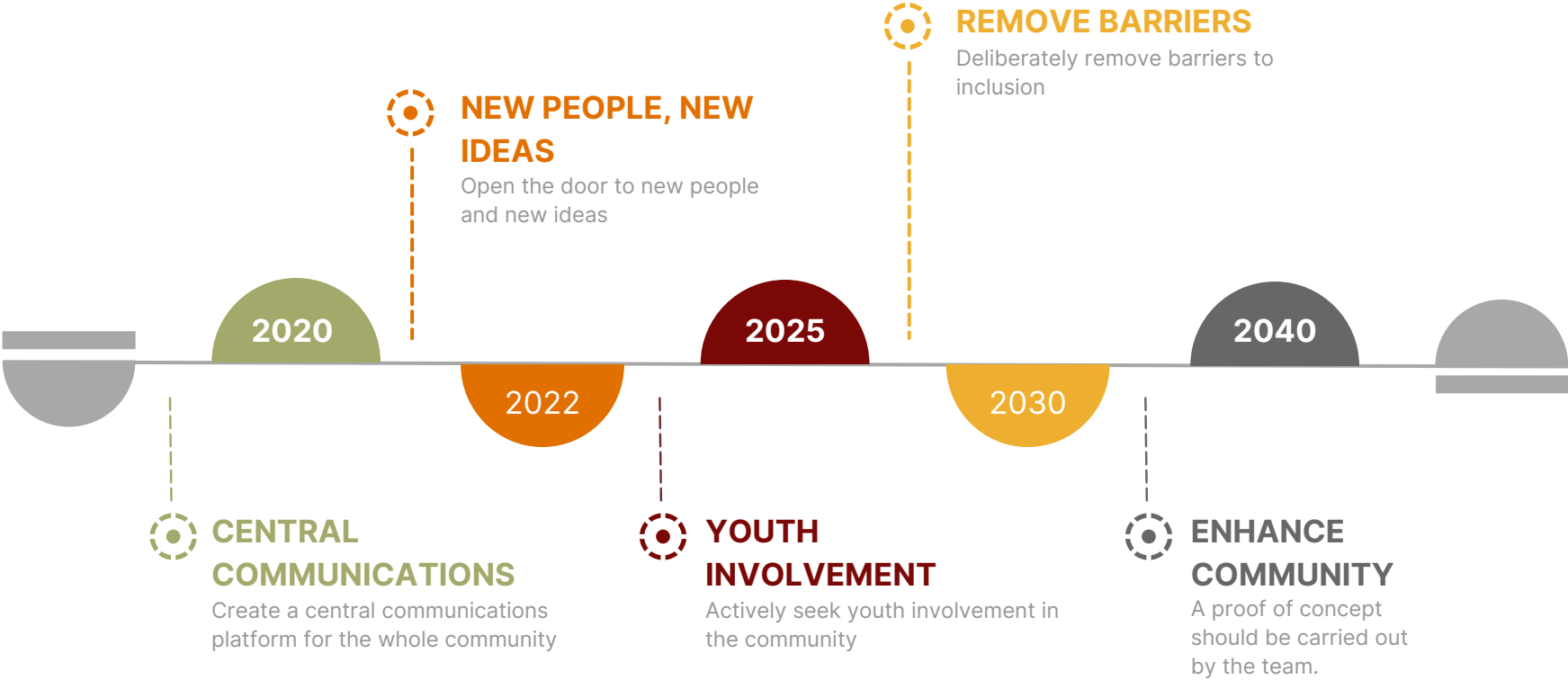
Communities that provide evolving educational opportunities to community members at all stages of life are notably more attractive to younger community members and are more successful at retaining skilled workers.



# Inclusivity & Support

## Foster Supportive & Inclusive Community Culture

As demographic and the ethnic make-up of Mitchell changes, embracing the change and learning how to use it to enrich the community will only make Mitchell a stronger community.



# Strengthen Industry Clusters

Strengthen the Technology,  
Agriculture, and other industry clusters

To become a regional leadership center Mitchell will require significant collaborative initiatives by community leadership.

