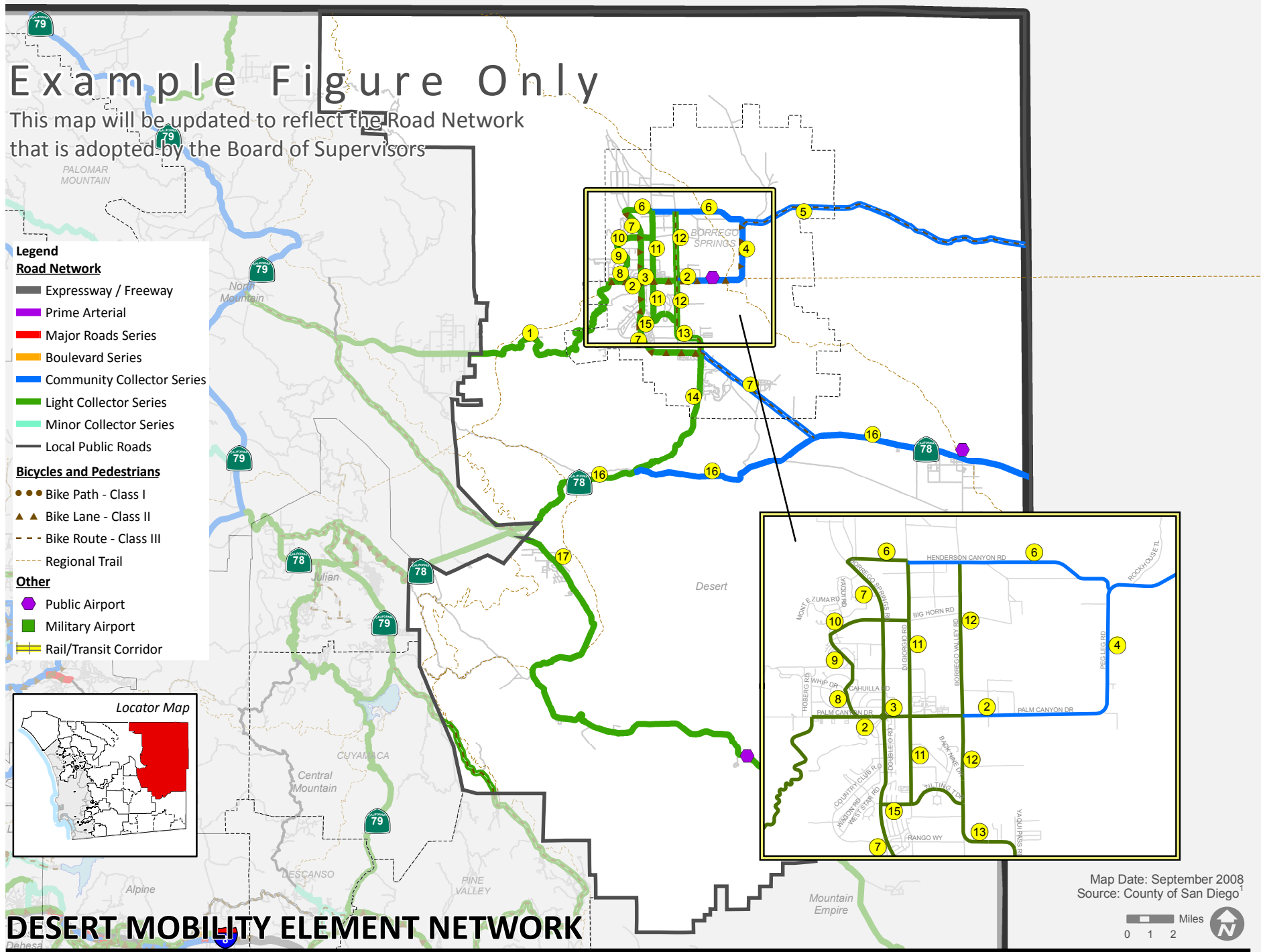
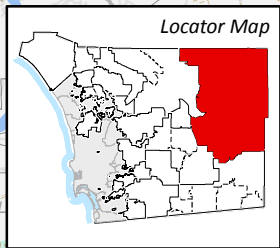


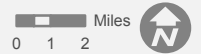
# Example Figure Only

This map will be updated to reflect the Road Network that is adopted by the Board of Supervisors

- Legend**
- Road Network**
- Expressway / Freeway
  - Prime Arterial
  - Major Roads Series
  - Boulevard Series
  - Community Collector Series
  - Light Collector Series
  - Minor Collector Series
  - Local Public Roads
- Bicycles and Pedestrians**
- Bike Path - Class I
  - Bike Lane - Class II
  - Bike Route - Class III
  - Regional Trail
- Other**
- Public Airport
  - Military Airport
  - Rail/Transit Corridor



Map Date: September 2008  
Source: County of San Diego<sup>1</sup>



## DESERT MOBILITY ELEMENT NETWORK



Mobility Element Network – Desert Subregion Matrix			
ID <sup>a</sup>	Road Segment	Designation/Improvement #.#X = [# of lanes].[roadway classification][improvement]	Special Circumstances
1	Montezuma Valley Road (SF 1406) <u>Segment:</u> Ranchita to Palm Canyon Drive	2.2D Light Collector Improvement Options [Passing Lanes]	None
2	Palm Canyon Drive (SA 180) / (SC 430) <u>Segment:</u> Montezuma Valley Road to Peg Leg Road [excluding Christmas Circle]	2.2A Light Collector Raised Median — Montezuma Valley Road to Borrego Valley Road (excluding Christmas Circle) 2.1D Community Collector Improvement Options [Unspecified]—Borrego Valley Road to Peg Leg Road	None
3	Christmas Circle (SA 175) <u>Segment:</u> Traffic Circle	2.2E Light Collector	The two-lane road would have a one-directional traffic flow
4	Peg Leg Road (SC 450) <u>Segment:</u> Palm Canyon Drive to Borrego-Salton Seaway	2.1D Community Collector Improvement Options [Unspecified]	None
5	Borrego-Salton Seaway (SA 160) <u>Segment:</u> Peg Leg Road to Imperial County line	2.1D Community Collector Improvement Options [Passing Lanes]	None
6	Henderson Canyon Road (SC 420) <u>Segment:</u> Peg Leg Road to Borrego Springs Road	2.1D Community Collector Improvement Options [Unspecified]—Peg Leg Road to Di Giorgio Road 2.2E Light Collector Di Giorgio Road to Borrego Springs Road	None

Mobility Element Network – Desert Subregion Matrix			
ID <sup>a</sup>	Road Segment	Designation/Improvement #.#X = [# of lanes].[roadway classification][improvement]	Special Circumstances
7	<b>Borrego Springs Road (SA 170)</b> <u>Segment:</u> Henderson Canyon Road to SR 78	<b>2.2E Light Collector</b> Henderson Canyon Road to Christmas Circle <b>2.2D Light Collector</b> Improvement Options [Unspecified]—Christmas Circle to Yaqui Pass Road <b>2.1D Community Collector</b> Improvement Options [Unspecified]—Yaqui Pass Road to SR 78	None
8	<b>Ocotillo Circle</b> <u>Segment:</u> Palm Canyon Drive to Lazy S Drive	<b>2.2E Light Collector</b>	None
9	<b>Lazy S Drive</b> <u>Segment:</u> Ocotillo Circle to Big Horn Road	<b>2.2E Light Collector</b>	None
10	<b>Big Horn Road (SA 160)</b> <u>Segment:</u> Borrego Springs Road to Di Giorgio Road	<b>2.2E Light Collector</b>	None
11	<b>Di Giorgio Road (SC 460)</b> <u>Segment:</u> Henderson Canyon Road to Tilting T Drive	<b>2.2D Light Collector</b> Improvement Options [Unspecified]—Henderson Canyon Road to Palm Canyon Drive <b>2.2E Light Collector</b> Palm Canyon Drive to Tilting T Drive	None
12	<b>Borrego Valley Road (SC 470)</b> <u>Segment:</u> Henderson Canyon Road to Rango Way	<b>2.2E Light Collector</b> Henderson Canyon Road to Palm Canyon Drive <b>2.2D Light Collector</b> Improvement Options [Unspecified]—Palm Canyon Drive to Rango Way	None
13	<b>Rango Way (SC 445)</b> <u>Segment:</u> Borrego Valley Road to Yaqui Pass Road	<b>2.2D Light Collector</b> Improvement Options [Unspecified]	None



Mobility Element Network – Desert Subregion Matrix			
ID <sup>a</sup>	Road Segment	Designation/Improvement #. #X = [# of lanes].[roadway classification][improvement]	Special Circumstances
14	Yaqui Pass Road (SF 1406) <u>Segment:</u> Rango Way to SR 78	2.2D Light Collector Improvement Options [Unspecified]	None
15	Tilting T Drive (SC 440) <u>Segment:</u> Borrego Springs Road to Borrego Valley Road	2.2E Light Collector Borrego Springs Road to Di Giorgio Road 2.2B Light Collector Continuous Turn Lane — Di Giorgio Road to Borrego Valley Road	None
16	State Route 78 <u>Segment:</u> North Mountain Subregion boundary to Imperial County line	2.2D Light Collector Improvement Options [Passing Lanes] — North Mountain Subregion boundary to Yaqui Pass Road 2.1D Community Collector Improvement Options [Passing Lanes] — Yaqui Pass Road to Imperial County line	None
17	Great Southern Overland Stage Route of 1849 (SA 200) <u>Segment:</u> North Mountain Subregion boundary to Mountain Empire Subregion boundary	2.2E Light Collector	None

a. ID = Roadway segment on Figure M-A-7