



# *living!*LOCAL™

Foster City Area Guide

## A CHANGING PERSPECTIVE

**15** companies in the 92 corridor impacting the community *and* global stages.

### LOCAL, REGIONAL & GLOBAL REACH

Organizations in the area are redefining what being *local* really means.



**3<sup>rd</sup>**

**Edition**

[fc-livingLOCAL.com](http://fc-livingLOCAL.com)



Advancing  
Therapeutics,  
Improving  
Lives.

For more than 30 years, Gilead has worked to develop medicines that address areas of unmet medical need for people around the world.

Our portfolio of medicines and pipeline of investigational drugs include treatments for HIV/AIDS, liver diseases, cancer, inflammatory and respiratory diseases, and cardiovascular conditions.

Every day we strive to transform and simplify care for people with life-threatening illnesses.

**TOWNEPLACE  
SUITES<sup>®</sup>**  
BY MARRIOTT

## The Newest Hotel in Foster City



As an extended stay hotel, we offer 121 spacious studios and suites, where you can balance work and life with the comfort and flexibility you require. Relax and feel at home with a fully equipped kitchen and wireless high speed internet access. Enjoy a hot buffet breakfast, coffee and tea in lobby, and access to our 24-hour fitness center, business center, guest laundry area and outdoor patio with Weber grill.

Located only 8 miles from San Francisco International Airport, TownePlace Suites by Marriott is within walking distance to world renowned companies and several unique restaurants and retail shops within Bridgepointe Shopping Center and Chess Corner.



For more information, please visit [www.gilead.com](http://www.gilead.com).  
© 2019 Gilead Sciences, Inc.

**1299 CHESS DRIVE | FOSTER CITY, CA 94404 | (650) 539-4600**

[www.marriott.com/sfomt](http://www.marriott.com/sfomt)

# Award WINNING Chamber

Recognized with two Communicator Awards for creative excellence, our publication stands out.

Chosen from more than 6,000 entries worldwide, our publication received the 2016 Gold Award for Excellence—the top award in its category—as well as a Silver Award for Distinction.

The Communicator Awards is the largest, most competitive awards program honoring communications professionals. It's judged and overseen by the Academy of Interactive and Visual Arts (AIVA). This group of industry leaders includes acclaimed media, advertising, and marketing firms like Condé Nast, Disney, MTV, Time Inc., and many others.

We're thrilled that these heavyweights have singled out our guide. It represents another milestone in our ongoing transformation here at the Foster City Chamber of Commerce.



# Keeping pace with RAPID CHANGE

It starts with engagement and collaboration.

Partnering for impact with more than 300 of the most successful businesses and organizations on the Peninsula, we are expanding our reach and creating new opportunities. We're working together to support, promote and advocate for our businesses and the communities they serve.

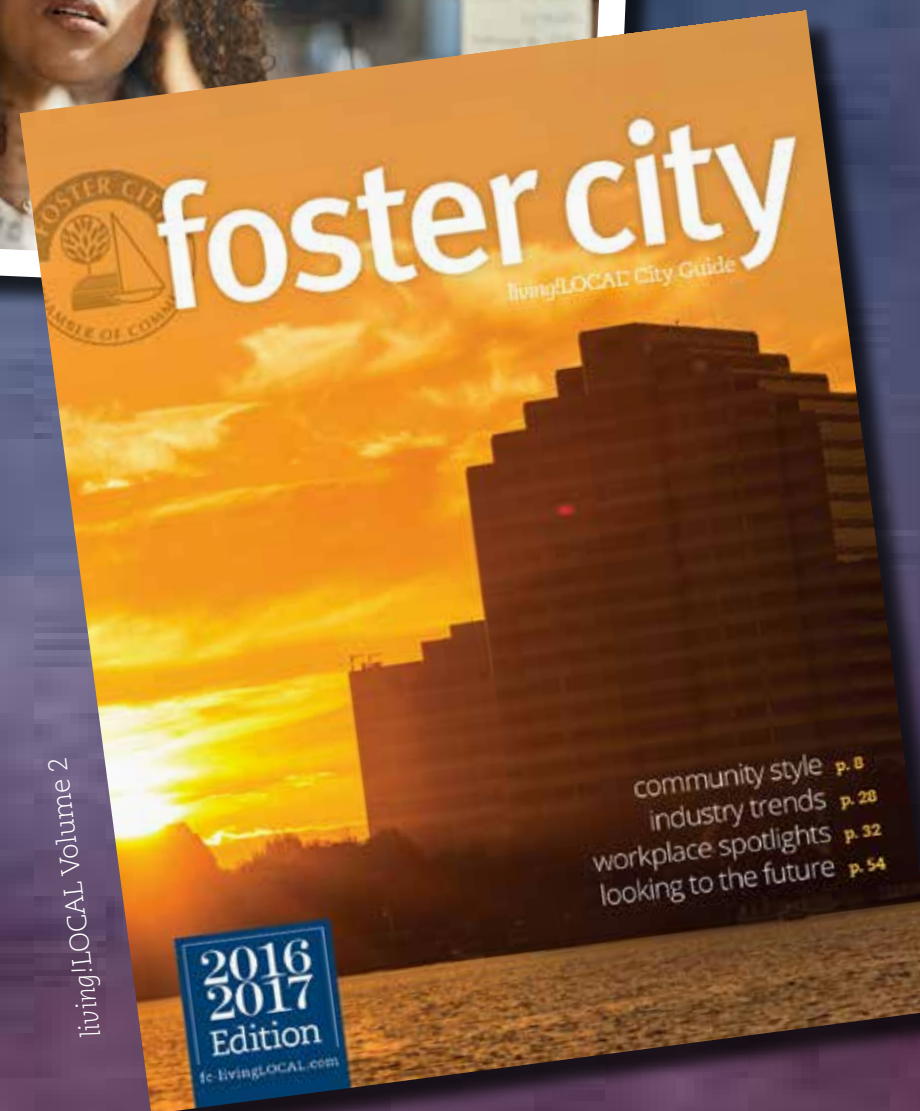
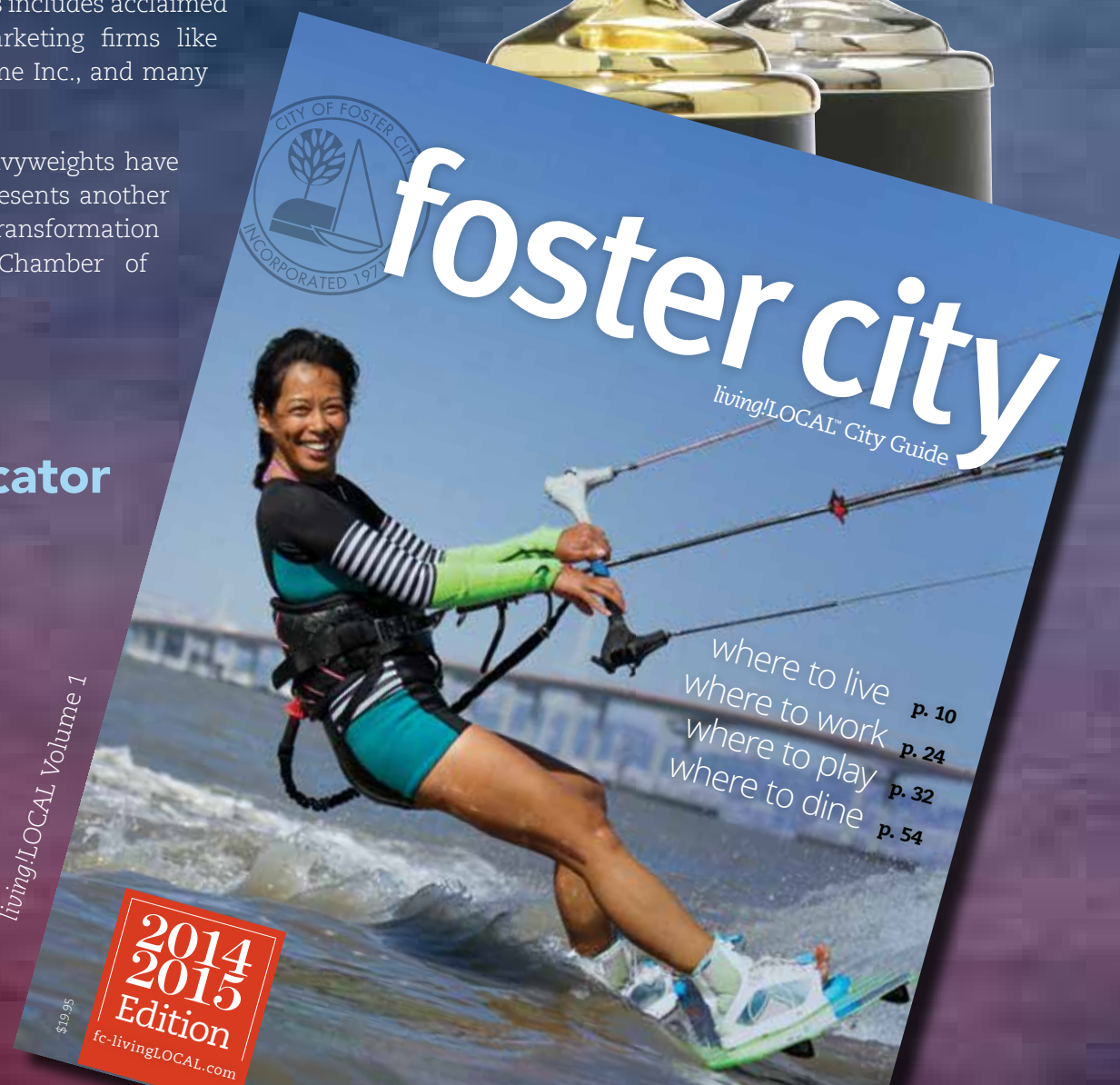
**WE MEAN BUSINESS.**

**JOIN US**

Foster City Chamber of Commerce  
100 Grand Lane, Suite B  
Foster City, CA 94404  
650.573.7600  
[fostercitychamber.com](http://fostercitychamber.com)

**CONNECT WITH US**

[facebook.com/FosterCityChamber](https://facebook.com/FosterCityChamber)  
[twitter.com/ThinkFosterCity](https://twitter.com/ThinkFosterCity)  
[instagram.com/fostercitychamber](https://instagram.com/fostercitychamber)  
[linkedin.com/in/foster-city-chamber-of-commerce-64a33840](https://linkedin.com/in/foster-city-chamber-of-commerce-64a33840)



# From the Editor



CONVENE.  
EMPOWER.  
ACT.

Welcome to the experience that is “living!LOCAL”...

We ushered in the first edition of the living!LOCAL City Guide (2014-15) to national acclaim and we couldn't be prouder to be recognized for the representation of our city and the quality of life and place Foster City has to offer. In volume 2 you got a glimpse into our community style, trends in industry, workplace spotlights and our vision for the future which make Foster City what it is today and what it will be tomorrow.

Now, I invite you to step with us through the looking glass and experience the 3rd volume of living!LOCAL. Our points of view are unique and personal. But what if those views were cultivated and refined? What if, instead of one giant story about a place, we celebrate the culmination of many short stories of the people and organizations that are stitched and bound together by what we all share and experience to impact not only our own community but those we are connected to? After all we should never judge a book by its cover. Right?!

This living!LOCAL is intended to challenge you to look and bring a fresh perspective to what community means. And perhaps get to know those that make us the vibrant, diverse and dynamic community we are in an ever so slightly different light; providing us, the individual, resident or business, the opportunity to expand our ability to connect and collaborate with our community partners. These connections are the secret weapon that will help the preservation of our “embedded sustainability” in the years to come.

Everyone at the Foster City Chamber of Commerce is grateful for all of you, our readers, advertisers, contributors, photographers, members and friends for your continued support.

Joanne M. Bohigian, Editor



**Editor** Joanne Bohigian

**Editorial & Operations Director** Marah Curry

**Consulting Copy & Art Director** Dan Demers

**Design** Adduci Studios

**Contributing Writers:**

Erika Ebbel Angle Ph.D., Mary Bates, City of Foster City, Bart Charlow, County of San Mateo, Myra Cruz, Dan Demers, Raquel Espana, Marlene Hopper, Richard Hopper, Patricia Jenkins, Kate Korsh, Kim Krellin, Kitty Lopez, Pennie Lundberg, Jessica Mitchell, Pierre Morrison, David Needle, Jimmy Ness, Brittany Puccinelli, Chris Ridley, Ray Rosenthal, Diane Shew, Monica Smith, Colleen Sullivan, Jim Traceski, Laurie Wagner, Joani Wong, Katie Woods, Julie Wrighton, Wing Yu

**Contributing Photographers:**

Angela Bass, Angela Castillo, Michael Filippoff, Dennis Hancock, Shreenivasan Manieivannan, Jennifer Townhill, Nicoleta Viscapiova

**How to Reach the Publisher**

Foster City Chamber of Commerce  
100 Grand Lane, Suite B  
Foster City, CA 94404

650.573.7600

livinglocal@fostercitychamber.com

**BE SOCIAL**

facebook.com/FosterCityChamber  
twitter.com/ThinkFosterCity  
instagram.com/fostercitychamber  
linkedin.com/in/foster-city-chamber-of-commerce-64a33840

**Chamber Board of Directors 2019 - 2020**

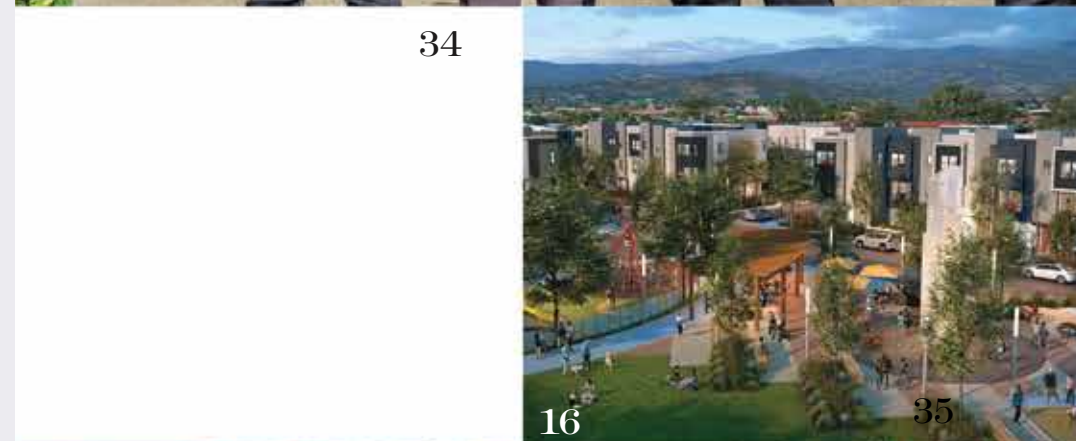
Nathan Tsai	Chess Corner Retail Center	Chair
Dan Demers	Hillbarn Theatre	Vice Chair, Finance & Admin, Treasurer
Rica Ruiz	Meraki Real Estate	Vice Chair, Membership
Joanne Bohigian	whaddyathink, LLC	Vice Chair, Program Development
Cliff Berry	Visa, Inc.	Past Chair
John Fanourgiakis	Sandwich Monkey	Director
Al DeGroot	Gilead Sciences, Inc.	Director
Jennifer Selvitella	State Farm Insurance	Director
Martin Uiberlacker	TownePlace Suites	Director
Joe Khoei	SalesX	Director
Angie Krackeler	IBM	Director

The information in living!LOCAL Foster City Area Guide has been gathered from sources considered to be reliable. The accuracy of all information cannot be guaranteed.

All rights to the contents of this publication are owned in full by living!LOCAL Foster City Area Guide and may not be reproduced in whole or in part without written permission from the publisher.

Copyright © 2019. All rights reserved.

**On the Cover: A Different Perspective**  
©Photo by Shreenivasan Manieivannan



## Contents

10

**A SUSTAINABLE COMMUNITY** The city isn't just a place where people live, work and play. It's how well these three things intertwine.

16

**PILGRIM-TRITON** Foster City has a new neighborhood. Take a look at how it came about and how change can benefit the community.

18

**15 BUSINESSES DOING IT RIGHT** Take a look at 15 organizations working both with and within the community, while having eyes on the future.

63

**RESTAURANT GUIDE** Enjoy the dining experience that you can have without leaving the city limits.

70

**CHAMBER MEMBER DIRECTORY** Locate trusted businesses in this detailed directory.

93

**INDEX OF ADVERTISERS**

68

34



16

35

20



SUSTAINABILITY IS OUR LEGACY

# Foster City

# FOSTER CITY

A Sustainable Community Engineered by Design



© Photo by Dennis Hancock

While Foster City may seem like a small town, make no mistake, we are diverse, bold, innovative, and have a big vision for the future. We are committed to investing in our infrastructure, local businesses, and citizens in innovative ways improving the quality of our community. These commitments are nothing new, it's in our DNA.

Foster City has a rich history. As a master planned community, strategic decisions have been made to engineer the necessary infrastructure to allow its community to thrive. In fact, since its development in 1960, Foster City has always taken a proactive role in its own growth through continual cycles of analysis, planning and change. Recently these changes have focused on the longer-term well-being and prosperity for not just residents, but for businesses and the environment as well. In other words, this focus is on sustainability.



© Photo by Angela Castillo

## A Beacon Of Sustainability

On June 6, 2013, Foster City renewed its commitment to a “Sustainable Foster City” with the intent to “sustain and enhance the quality of life in Foster City”, using the three core tenets of economic, environmental and social equity principles to achieve our goals. The goal of becoming a sustainable community. Since 2015, Foster City has received 10 Beacon Awards from the Institute for Local Government and the Statewide Energy Efficiency Collaborative. The Beacon Program provides a framework for local governments to share best practices that create healthier, more vibrant and sustainable communities, and honors voluntary efforts to reduce greenhouse gas emissions, save energy, and adopt policies that promote sustainability.



### Levee Protection Planning and Improvement Project

In June 2018, Foster City residents voted to approve a \$90 million general obligation (GO) bond to improve and strengthen the Foster City levee system. The first of the GO bond sales are scheduled to occur in May/June 2020. The Levee Project would provide for critical improvements to Foster City's levee system, not only allowing Foster City to meet the Federal Emergency Management Agency's (FEMA) flood protection requirements, but also protecting essential city services during storms and protect the levee from earthquake damage.

In January, 2020 the City of Foster City reached a pivotal milestone in the advancement of its Levee Protection Planning and Improvements Project after receiving the final remaining permit needed from the U.S. Army Corps of Engineers. The Levee Project required extensive community engagement and passage of the Measure P bond measure to approve the project to address FEMA requirements and raise the height of the levee to provide additional protection from flooding. had required permits from four (4) major regulatory agencies: The State Lands Commission (SLC), the Regional Water Quality Control Board (RWQCB), the San Francisco Bay Conservation and Development Commission (BCDC), and the U.S. Army Corps of Engineers (USACE).

Construction is expected to begin in 2020. To learn more, visit [www.fostercity.org/publicworks/project/levee-protection-planning-and-improvements-project-cip-301-657](http://www.fostercity.org/publicworks/project/levee-protection-planning-and-improvements-project-cip-301-657)



**Gold Winner**  
Green Policies & Practices  
2019



**Platinum Winner**  
Community Greenhouse Gas Reductions  
2019



**Silver Winner**  
Agency Energy Savings  
2017



**Gold Winner**  
Community Greenhouse Gas Reductions  
2018



**Platinum Winner**  
Agency Energy Savings  
2015



**Silver Winner**  
Community Greenhouse Gas Reductions  
2015



**Gold Winner**  
Agency Natural Gas Savings  
2017



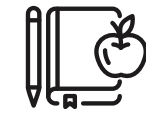
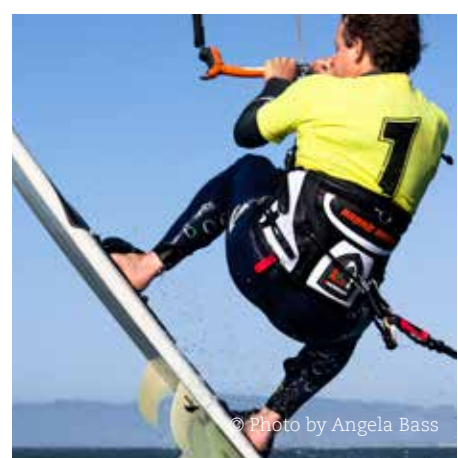
**Platinum Winner**  
Sustainability Best Practices  
2017



**Platinum Winner**  
Agency Greenhouse Gas Reductions  
2017



**Gold Winner**  
Sustainability Best Practices  
2015



Foster City has **THREE** public K-5 schools  
**ONE** new elementary school on its way  
**ONE** public middle school  
**NUMEROUS** private K-5 and preschools

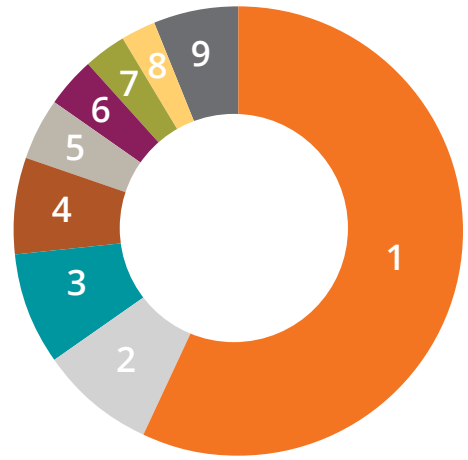


**\$136,383**

Annual Household income

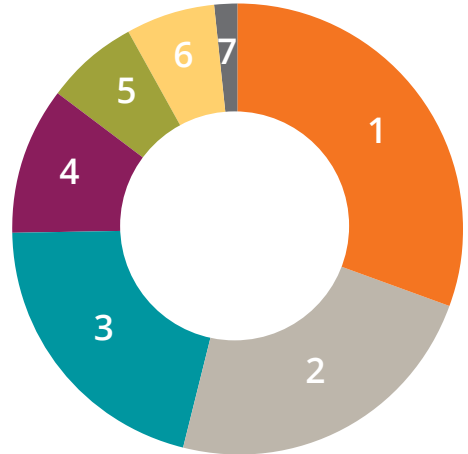
## Where the Money Comes From

- 1 Property tax 56.96%
- 2 Transient occupancy tax 8.37%
- 3 Property tax in lieu of vehicle license fee 8.08%
- 4 Sales tax 6.89%
- 5 Charges for current services 4.52%
- 6 Bus license tax 3.54%
- 7 Permits + fees 3.17%
- 8 Franchise tax 2.43%
- 9 Other 6.04%



## Where the Money Goes

- 1 Police 30.56%
- 2 Fire 23.50%
- 3 Parks & Rec 20.76%
- 4 Gen Govt 10.47%
- 5 Comm Dev 6.92%
- 6 Public Works\* 6.39%
- 7 Other 1.39%



\*Excludes water and wastewater enterprise funds

# Foster City snapshot

Sustainable Foster City is a holistic approach that embraces the common sense notion that long-term **economic prosperity**, **social equity** and **ecological health** not only go together, they depend on each other.



Foster City was incorporated on:

**April 27, 1971**

Foster City has **ONE** Police Station

**ONE** Fire Station

**THREE** Community Centers

**ONE** Public Library

**FOUR** square miles of town

**TWO-HUNDRED TWELVE** acres of lagoon

**900**



There are over 900 elementary & middle school **graduates** of the anti-gang program **G.R.E.A.T.**

**73%**



The **poverty level** in Foster City is 73% lower than the national average

**58%**



**Home ownership** in Foster City is over 58%.

**24**



There are 24 **parks** around town to give folks clean outdoor spaces

**98<sup>th</sup>**



Foster City is ranked as the 98<sup>th</sup> **Safest City** in the country

**900**



There are 900 residents trained as **C.E.R.T. members**



**3:59**

Average **POLICE** response time for priority calls

**4:47**

Average **FIRE** response time for priority calls



**40.4**

Median **AGE** of residents

**34,151**

**POPULATION** in town



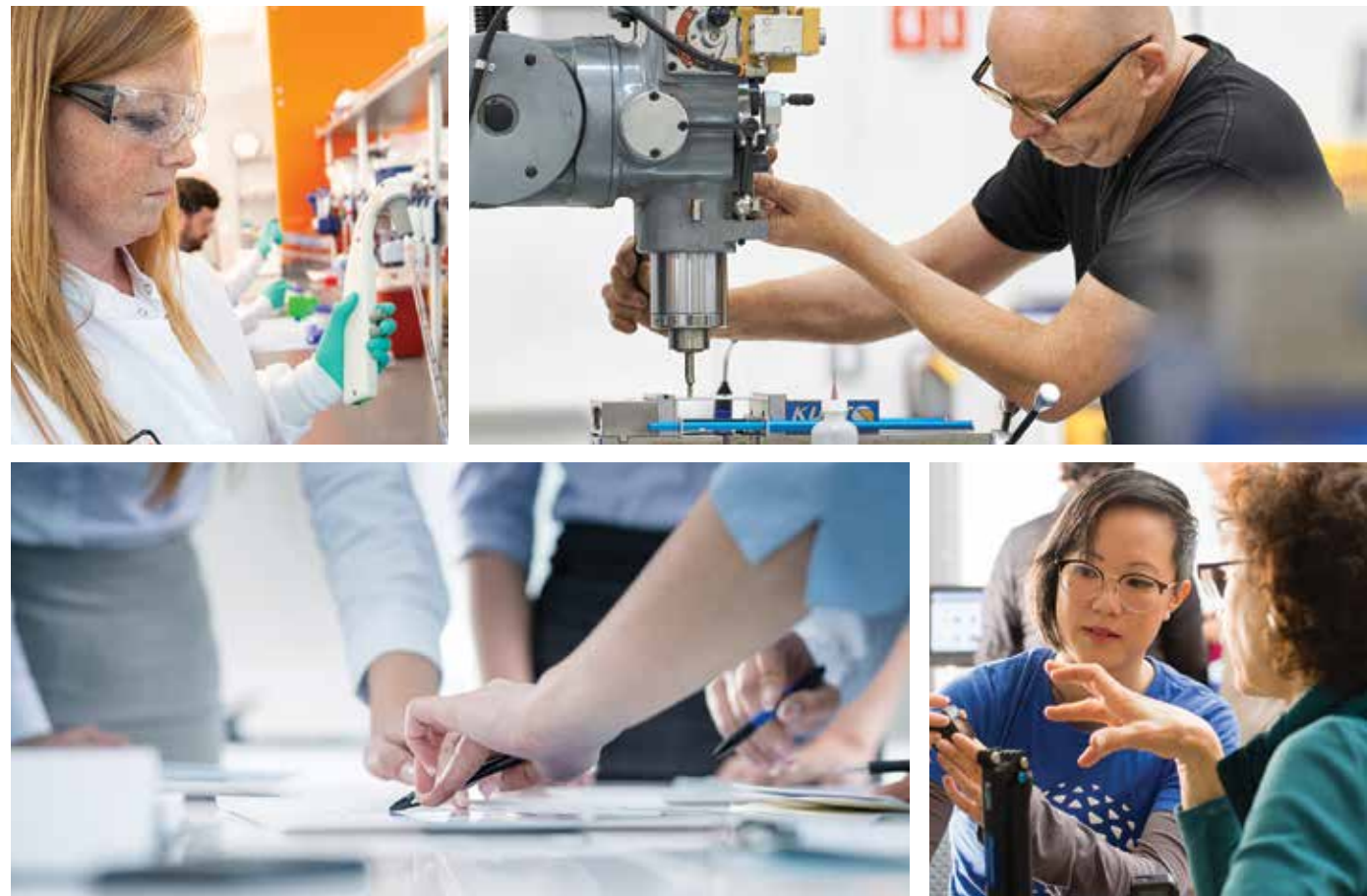
# Working Trends

Industry leads with sustainable actions in our community

## Support for a Diverse, Modern Business Community

Several global Fortune 500 companies call Foster City their home, including VISA, the IBM Innovation Center, and pharmaceutical giant Gilead Sciences. However, it's not just the titans who hail from Foster City... Many innovators have established thriving businesses here. Zoox is a trailblazer in autonomous driving vehicles, Illumina is a biotech pioneer, and Quantum Analytics is a major supplier of analytical systems.

What makes Foster City so great for business? Our companies have a competitive advantage, drawing on a highly-skilled and educated labor force, local service industries that support and benefit the business community, and are located in one of the most diverse, tech-savvy, culturally vibrant, and environmentally friendly areas in the country.



## Industry Leaders

The top ten major employers in Foster City employ roughly 14,400 workers, accounting for over half of all workers in the City. Jobs with these firms are predominantly in the high-paying financial services and technology sectors.

	Gilead Sciences Employees: <b>8,268</b> Biopharma Headquarters	1	6		CyberSource Employees: <b>409</b> eCommerce gateway
	Visa USA Employees: <b>2,152</b> Company Headquarters	2	7		Illumina Employees: <b>389</b> Genetic analysis
	Innovant Employees: <b>867</b> Office & computer furniture	3	8		IBM Corporation Employees: <b>367</b> Computer & IT consulting
	Guidewire Software Employees: <b>670</b> Insurance Software Dev.	4	9		CSG Consultants Employees: <b>364</b> Municipal staff support
	Zoox Employees: <b>530</b> Autonomous vehicles	5	10		Brightedge Technologies Employees: <b>356</b> SEO, digital marketing

## Top 10 Commercial Properties

- Gilead Sciences
- BMR Lincoln Center LP
- Hudson Metro Center LLC
- Visa USA
- Trust Parkside Towers Corp.
- BEX FMCA LLC
- SF Hillsdale LLC
- CV Triton LLC
- Northwestern Mutual Life
- Bayside Towers

- one
- two
- three
- four
- five
- SIX
- seven
- eight
- nine
- ten

Above tables based on assessed value and business license data. Source: City of Foster City, FY 2018-2019



# A Look Back...And A Look Ahead

*Pilgrim-Triton: A Foster City neighborhood with a mission to meet the needs of a community whose eyes are set on the future*



View of the planned Pilgrim-Triton final phase

What's old is what's new again. The Pilgrim-Triton Master Plan began as a simple discussion regarding under-utilized properties and outdated buildings in the older commercial and industrial areas throughout the city. Very soon it became clear that one particular area stood out.

The Pilgrim-Triton area was initially developed in 1975-1980 with one-story light industrial and office buildings. Occupancy waxed and waned over the years, but by the turn of the last century it was becoming clear that the makeup of these spaces was antiquated and did not serve the community.

In 2005, the City noticed the increasing vacancy rates in this area. The Planning

Commission was brought in to study and make recommendations for potential future land uses, and in February of 2006, the City Council endorsed the Commission's recommended direction.

The City then suggested to the three owners of the property that they work together to redevelop the site to address community needs and market forces. Eighteen widely-publicized meetings were held to develop a Master Plan and adopt related General Plan amendments, zoning changes and the Final Environmental Impact Report.



Final phase! Laguna Vista - completion in 2021

The stage was set for the creation of a new 14th neighborhood—the first in more than 20 years.

This new neighborhood was designed to be a mixed use development on approximately 20.75 acres, and will include up to 70,057 sq. ft. of commercial/industrial office and 805 housing units, including 155 affordable housing units. The multi-phase plan began with housing and retail at The Plaza, The Triton, One Hundred Grand, and Waverly Cove. A final phase will include Laguna Vista Townhomes and Workforce Apartments.

## Smart Growth

Mixed use (a.k.a. “smart growth”) developments, like Metro Center and Marlin Cove, have been highly successful in Foster City, and are a key component of sustainable urban development. Smart growth concentrates development in compact walkable urban centers to avoid sprawl. Pilgrim-Triton's location on existing transit and shuttle routes and within walking distance of many of Foster City's central amenities and services was considered a great location for the new neighborhood.

It is expected that the mixed use redevelopment of the Pilgrim-Triton area also will promote the retention of existing businesses and would accommodate a more interesting, efficient and diverse array of land uses, increasing opportunities for small, resident-serving businesses.

On a larger scale, it will also help the City meet its state-mandated “fair share” housing requirements, which will accommodate housing closer to jobs, reduce traffic congestion and environmental impacts of long commutes and improve economic sustainability by having a labor force to support business retention and growth.

As a bonus, with the increased economic activity will come additional property and sales tax to help support police, parks, recreation and other City services—smart growth indeed.

PHASE  
1

The first phase, The Plaza and a portion of the central park, was completed in 2013 with **307 apartment units** including **60 affordable units**, and approximately **10,000 sq. ft. of retail**.

COMPLETED 2013

PHASE  
2

The second phase, One Hundred Grand, was completed in 2015 with **166 units** including **33 affordable units**, and approximately **6,000 sq. ft. retail**.

COMPLETED 2015

PHASE  
3

The third phase, The Triton, was completed in 2016 with **220 units** including **48 affordable**, and approximately **5,000 sq. ft. retail**. A portion of this phase, Waverly Cove Townhouses, includes an additional **20 townhouse units** that will be completed in 2020.

COMPLETED 2016

PHASE  
4

The final phase, Phase C (now named Laguna Vista), includes **92 units** including **22 units of Workforce Housing** that will be owned by the City of Foster City. This phase will also include completion of the **central park and roadway system** envisioned in the Master Plan. Completion of this phase is anticipated in 2021.

PLANNED 2021



The Plaza - 2013



100 Grand - 2015



The Triton - 2016



Waverly Cove - 2020

# FOSTER

**BUSINESS GROWTH  
AS A PART OF A  
LARGER ECOSYSTEM**

ECONOMICS



**1.5%** **UNEMPLOYMENT RATE**, LOWER THAN BAY AREA AVERAGE



**20,308** NUMBER OF **JOBS** IN FOSTER CITY

INCREASE IN **CLEAN TECH INVESTMENT** FROM 2013-2014 IN FOSTER CITY

**57%**



**34%** **PROJECTED INCREASE** IN JOBS BETWEEN 2020 & 2025



**5.6** **TIMES**

NUMBER OF JOBS HELD IN **STEM** POSITIONS COMPARED TO NATIONAL AVERAGE

Source: <https://datausa.io/profile/geo/foster-city-ca/>

**\$136,383**

MEDIAN FOSTER CITY HOUSEHOLD **INCOME**

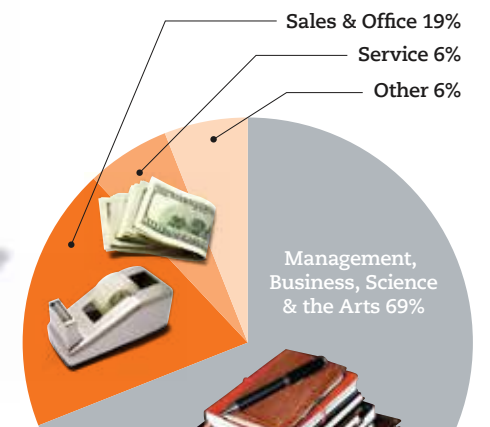


**QUALYS RANKING** IN WORLDWIDE VULNERABILITY ASSESSMENT MARKET

**3** Number of Fortune 500 companies doing business in Foster City



**94%** **OCCUPANCY** OF OFFICE SPACES THROUGHOUT THE CITY



Government Sites (14) 11%

Housing/Hotel (17) 13%

Retail (38) 28%

Food & Drink (27) 20%

Service (37) 28%

**WHERE THE JOBS ARE**

**GREEN BUSINESSES** CERTIFICATIONS BY INDUSTRY

n=133  
Source: California Green Business Program



# Redefining Local for Community and Giving

Gilead works with organizations across all their therapeutic areas, partnering to advance the goals of their giving mission: to improve health access, eliminate the barriers to healthcare encountered by underserved populations, advance education among healthcare professionals and support the local communities in which they operate.



With each new drug discovery, Gilead seeks to improve the care of millions of patients living with life-threatening diseases around the world, including regions where access to medicine is limited or does not yet exist.

Gilead recognizes that patients and communities often face challenges in accessing the best possible care, and they know that passion for scientific discovery alone — and that Gilead alone — cannot solve these challenges. This is why, through their grantee programs, Gilead works hard to support patient advocates, nonprofits and healthcare professionals around the world who work tirelessly in local communities to improve people’s lives day after day.

For more than 30 years, Gilead has called Foster City home. Upon its founding in 1987, just down the street from where it sits now at 333 Lakeside Drive, Gilead was made up of just a handful of employees working out of a single building, with no marketed products and no revenue. Today, Gilead has more than 9,000 employees and contractors working

out of Foster City, their global headquarters, and employs more than 11,000 people worldwide. They are one of the top ten largest biopharmaceutical companies in the world. They discover, develop and commercialize innovative medicines in areas of unmet medical need and now have a portfolio of more than 25 products.

After developing the world’s first single tablet medicine for HIV, Gilead continued to seek new treatment and prevention options for people affected by HIV and other serious diseases. They later brought forward four medicines in less than four years that offer a cure for the majority of people living with chronic hepatitis C virus; those products have now treated more than 2 million people around the world with the disease. In addition to HIV and liver diseases, Gilead focuses on hematology/oncology and inflammation.

Learn about Gilead’s commitment to community. Visit [gilead.com](http://gilead.com).



## Commitment to Giving Back

Gilead takes pride in being about more than medicine, seeking to better the communities in which they operate.

That has led the company to support communities disproportionately affected by disease; the more than 12 million people in resource-limited countries who take HIV treatments daily at little or no cost, and to support Hepatitis C eradication projects throughout the world. Through their COMPASS Initiative, a more than \$100 million, 10-year effort to tackle HIV/AIDS in the Southern United States, and Age Positively, which shines a light on the challenges of aging with HIV, Gilead strives to make a difference in communities most affected by disease.

Gilead is also committed to the local communities in which their employees live, work and play; building relationships with community partners to initiate and accelerate key programs focused on the unmet needs of Foster City, San Mateo County and the greater Bay Area. Throughout the year, Gilead employees also donate time and resources to improving their unique communities and causes and the company further matches donations for employees who wish to support a cause and provides dedicated time during the year for community-based volunteerism.

## Sustainability

From their very beginnings in Foster City 32 years ago, Gilead has taken an interest in sustainable development. Now that they have 3.5 million square foot of operations in Foster City alone, that commitment has become even more important. Embracing core sustainability and green building practices, such as conserving natural resources, eliminating unnecessary waste and responsibly sourcing materials, has allowed Gilead to better deliver working environments that operate efficiently.

Gilead has also undertaken other efforts focused on sustainability and works closely with the City to make contributions to a more Sustainable Foster City. Gilead announced they will be taking a stand against the threat of climate change with a 25% reduction in greenhouse gas emissions by 2025.

“Science is at the core of Gilead’s business, and the science of climate change is clear,” said Joydeep Ganguly, Senior Vice President, Corporate Operations. “At Gilead, we recognize the urgency to mitigate the threat of climate change and are committed to doing our part to transition to a low-carbon future. We believe that protecting the environment is integral to our mission, which is why we continuously strive to improve our environmental practices through conservation and pollution-prevention principles.”



# Essential Education

Science, Technology, Engineering, and Math (STEM) education is essential to the environment, America's health, security, and economic competitiveness, and it is the belief of Science from Scientists that it is their obligation to empower future generations with the tools and knowledge they will need to solve the global problems they will inherit.

According to the Council of Advisors on Science and Technology, the U.S. is not producing enough STEM undergraduate degrees to match the forecasted demand for STEM professionals. Lack of content, competency and low interest in STEM are drivers of this workforce gap. To address this gap, Dr. Erika Ebbel Angle, a San Mateo native and graduate of the Massachusetts Institute of Technology with a doctorate in biochemistry from Boston University School of Medicine, founded Science from Scientists in 2002. Their mission is to give all students the opportunity to experience the excitement of doing real experiments, making real discoveries and appreciating how amazing our world is, regardless of gender, ethnicity or means.

This year, the organization will deliver STEM programming to over 10,000 students across Massachusetts, California and Minnesota. And, Dr. Angle has never forgotten her San Mateo roots. In 2014 a California office was established in San Mateo, and this year their STEM programs will serve over 3,000 students in 21 schools from Brisbane/Pacifica to San Jose, including two elementary schools in Foster City and four in San Mateo. Two-thirds of these partner schools serve the under-resourced student population.

The impact that Science from Scientists' STEM Enrichment programming has made within the communities served is not only metrics-measurable but has created an ongoing positive influence on students, parents, teachers, principals, school district personnel and valuable advocates and funders. Over 85% of partner schools renew the program year after year. Local corporations and foundations concerned about students' aptitude and attitude regarding STEM literacy have stepped up to offer support to Science from Scientists throughout San Mateo County. Donors remain engaged with the organization by attending classroom observations, serving as guest instructors, joining their local Advisory Council, participating in local city and school activities such as STEM Fests and Career Days as well even assisting with the maintenance and replenishment of lesson plan materials and supplies as a group volunteer event.

Youth ages 8 through 13 are curious, still eager to learn and just beginning to ponder their future careers. Science from Scientists offers interactive, exciting, informative lesson plans meeting all federal, state and local educational frameworks, from a library of over 100 different STEM topics selected by classroom teachers. Students watch and learn from two expert instructors along with their own teacher, participating in activities and student-centered discussions. The same two expert instructors visit their partner schools throughout the entire academic year, 18 separate visits, each visit teaching a different STEM subject. Included are all materials and supplies for each lesson so every student participates both individually and in small groups. Classes are held during school hours so that every student in each class can participate.

While there are other niche STEM Programs available locally and nationally, few compare to Science from Scientists' vast portfolio of lesson topics, with two real, charismatic experts (scientists, engineers or tech professionals) as instructors, teaching the same small classrooms of students, during school hours, including all materials, every other week over a nine-month span (18 visits).

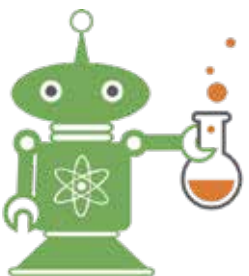
When each school year ends, students feel their instructors have become friends, mentors and genuine positive role models. Many students have never met a "real scientist" before, and as they come to know their instructors throughout the year they realize the instructors are regular people, just like them, and maybe THEY could become a scientist too!



*It's a long way from 5th grade to an impactful STEM career, but when the staff and instructors see students so eager for more STEM, they know they have met the challenge and students are on the path to success.*



*To learn more about Science from Scientists – how to get the program at your child's school, volunteer opportunities for local businesses, class observation schedules, details regarding lesson plans or instructors or funding benefits, visit the website [sciencefromscientists.org](http://sciencefromscientists.org)*



**SCIENCE**  
FROM SCIENTISTS



# Ready for the World

Local businesses inspire students to dream and create their best tomorrow

Foster City has experienced unprecedented growth in recent years, and along with new housing, there has also been growth in our local business community. How has all of this growth affected our elementary and middle school public education system?

New housing has brought new families and students to our district, but did you know that business growth in recent years has brought exciting new financial partnerships to benefit our students? Recognizing that local businesses, foundations, and municipalities can also help infuse life, energy, and growth in our schools and communities, the San Mateo-Foster City Education Foundation has partnered with San Mateo County's Measure K, Gilead Sciences, Inc., Silicon Valley Community Foundation, Chance to Excel, and PlayStation to inspire students to dream and create their best tomorrow.

Many residents believe that annual tax payments adequately fund the school system. Sadly, the San Mateo-Foster City School District's budget was reduced by \$20 million from 2008-2011 due to the 2008 recession. The decrease in budget led to the elimination of almost all funding throughout the district for programs including music and art in the 20 elementary and middle schools. **The Education Foundation stepped in to provide assistance to the school district.**



*“The Education Foundation is committed to reaching every child in our district with the support of local businesses, foundations, municipalities and families. We believe that a strong Education Foundation does more than just support the children in its care, it impacts the entire community”*

Diane Shew, Vice President of the San Mateo-Foster City Education Foundation

Three years ago, the Education Foundation experienced a rebirth under the leadership of former School Board member, Colleen Sullivan. With the need to prepare students for 21st Century skills and provide a well-rounded experience for students across the District, the Education Foundation reexamined its mission and fundraising model. **The Foundation made a commitment to increase fundraising to address these needs.**

Since then, the San Mateo-Foster City Education Foundation has increased the total amount raised by approximately 60% every year. This year, the Education Foundation has achieved its highest level of fundraising yet: \$794,000, to support the nearly 12,000 students in Foster City and San Mateo schools.

**Strong schools that educate the whole child and offer a wide range of programs create students who go on to become our future leaders.** Strong schools also help create a feeling of belonging and pride in our communities. However, the funds given to the school district each year from the state are still not enough to give our kids the kind of well-rounded education they deserve.

Colleen Sullivan noted, “When my son was in 5th grade, instrumental music was made possible through the Education Foundation. Twelve years later music continues to inspire him. The discipline, concentration, creativity, and sense of belonging he gained from playing the trumpet are gifts that continue to enrich his life.”



**The Education Foundation hopes to exceed its 2020 goal of \$1 million.**

Recent gifts from donors and partners have gone to support:

- Chromebooks
- Science education and materials
- Literacy materials to support English language arts and development
- Math professional development for teachers
- Character development training for student athletes and their families
- Uniforms for middle-school athletics
- Music education, instruments, and materials
- Art education

Since 1989, the non-profit San Mateo-Foster City Education Foundation has raised and donated more than \$3.8 million to the district, supporting art and music, as well as makerspaces, technology, science and math, literacy and libraries. These essential aspects of learning foster creativity, independent thinking, entrepreneurship, and growth in students. **Nearly 12,000 children in the district every year benefit from the Foundation's partnership with parents, corporations and broader Foster City and San Mateo communities.**

“Having additional Chromebooks allows our students to have access to technology on a more regular basis. Students have more time to use math and science simulations, learn research skills, write and peer edit their drafts and create presentations,” added Eleni Maynard, 4th grade teacher.



*For more information about the Foundation and its goals to inspire students to dream and create their best tomorrow, visit [smfcedfund.org](http://smfcedfund.org)*



# Serving up Community

**A**midst the hustle of living, working and playing at the epicenter of Silicon Valley, Penelope's Coffee and Tea offers its patrons a place to slow down, to be a part of a community, and remember that life is at its best when shared.

With roots from Crete, the Fanourgiakis Family, long standing Foster City residents, founders and co-owners of Penelope's Coffee & Tea (and Sandwich Monkey) know coffee shops and cafes are a part of daily life for their friends, family and neighbors. The "kafes" were the place to gather and share the experiences of the day. When they thought of building a business in Foster City, they looked only as far as their memories of a time where there was a genuine sense of community and a feeling of always being welcome to share a story with an old (or new) friend over a bite and a cup of coffee.

Since their opening in 2015, Penelope's has done just that. Their pay it forward ethos is evident as their connection to community is palpable. Born and raised in Foster City, the Owners (Nick, John, Mike and George) Fanourgiakis like to give back to their community. From offering free delivery service to any catering order placed from a Foster City based organization through to donating their time and services to various causes and organizations throughout San Mateo County and the Bay Area.

Penelope's Coffee & Tea has also steadily grown and expanded its service offerings since opening; now providing on-site and off-site food and beverage service management to corporations, universities, and specialty venues.

*Coffee continues to fuel the business – much as it helps power industry and commerce in communities around the Bay. Between the restaurant and catering operation Penelope's pours over 1 million cups of coffee every year.*



When Foster City based Gilead Sciences was considering the expansion of their on-site café offerings, they looked to vendors such as Starbucks, Peet's, Philz, Blue Bottle and others. They started hearing more and more about a local favorite from their community partners and employees living in and around campus.

"We decided to look into Penelope's more seriously and beyond the variety of offerings, taste and quality of their coffees and teas, we saw a dedication to quality and service in the family ownership that really resonated with us", said Al De Groot, Executive Director of Corporate Engineering & Facilities at Gilead Sciences. "In the end, the decision to partner with Penelope's was an easy one, and one that we still are enjoying the benefits of today with the two full service cafes we now have on campus."

Cliff Berry, Vice President Americas Real Estate & Facilities at VISA, recalls seeing the Penelope's iconic blue cup making its way onto its campus from employees visiting the flagship location at The Plaza. Visa's interest in championing local business was high, but so too were concerns that an independent could keep up with the demands of service and scale imposed by a big company. Visa, like Gilead, took the chance. "We couldn't be happier with the results," said Berry. "We offer other brands of coffee at our campus, but Penelope's is by far the employee favorite."

So whether you're stopping in to one of your favorite local community grocers, taking friends, family and out of town guests out on the bay with Hornblower Cruises, or needing to fuel your top talent to get through their days, just pour a cup of Penelope's Coffee and Tea and feel the traditions, customs and values of their family brought to modern times, with respect for the past, an appetite for innovation and a thirst for the future.



*To learn more about Penelope's services visit [penelopescoffee.com](http://penelopescoffee.com)*



# Urban Feel

Lennar creates a perfect lifestyle for ages 55 and better



*As one of the largest homebuilders nationwide, Lennar has been a strong character in the new homebuilding industry since its inception 65 years ago. The company defines its core principles of quality, value and integrity as the underlying foundation to everything they do. Foster Square is their first new home community in the Bay Area exclusively for homebuyers aged 55+.*

Lennar's portion of the overall Foster Square community consists of 200 age-qualified for sale condominiums. The overall community includes other age-qualified homes and apartments, new ground level retail and dining. With an emphasis on providing a lock-and-leave lifestyle, Foster Square is self-branded as an active adult community that's focused on providing a low maintenance home in a walkable Foster City setting, that keeps residents close to family living across the Bay Area.

Lennar's signature Everything's Included® program is part of every new home in the community, providing today's most popular features – such as stainless steel appliances, granite or quartz kitchen countertops, integrated home automation and more – at no additional cost.



Foster City lies just 25 minutes south of San Francisco, providing a nice escape from the busy city but still within reach of urban convenience. In the heart of Foster City, you'll find a premier age-qualified community unlike any other. Foster Square, providing a new way to live for individuals who have been there, done that and are still looking for more out of life.

The community was designed with walkability in mind so that residents are able to easily get to where they need to go. Because Foster Square is set in a mixed-use community, homeowners can easily access restaurants, retail plazas,

parks and waterways by simply following one of the many paths throughout the community's landscape. With an emphasis on a social lifestyle that's filled with fabulous amenities, Foster Square is proof that life can just keep getting better.

The Foster City Lagoon offers a perfect spot for picnicking, swimming, paddle boarding, kayaking or an electric boat ride, while the nearby Hillbarn Theater offers some culture with a great selection of live shows and musicals. If you end up just strolling around, be sure to look up and check the trees — Foster City is home to thousands of birds due to the extensive waterways and protected lagoons, making it a birdwatcher's delight. Craving to get out on the green? The Peninsula Golf and Country Club is less than five miles away. No matter what errands you have, whether for fun or out of necessity, getting them done will come with ease.

Foster Square was designed to create a sense of community with an urban feel. Once completed, residents will be able to enjoy the Town Square and Retail Plaza which will include over 30,000 square feet of retail space composed of a variety of restaurants and shops. The plaza will also be home to farmers markets, street fairs and festivals that will enhance the Foster Square living experience.

The central street of Foster Square was designed to lead both vehicular and pedestrian flow from the park and recreation center at Shell Blvd, culminating at the retail center. A network of pedestrian oriented streets and paseos compliment the connectivity of the community with its surrounding amenities, and convenient gathering spaces enhance the experience for both residents and visitors alike.

Avery, Brixton and Claremont feature 13 floorplans to choose from in total, which range from approximately 1,144 to 2,172 square feet of living space. Avery and Claremont both have models open daily. Visit the Welcome Home Center located at 1009 Foster Square Lane #201 in Foster City.

**LENNAR®**

For more information  
visit [lennar.com/bayarea](http://lennar.com/bayarea)

# Retail Details

Foster City boasts seven retail centers with more being developed in the Pilgrim Triton and Foster Square additions. From dedicated retail centers to residential/retail complexes, Foster City delivers. And if you can't find it in town, there are major shopping centers within a few miles, keeping residents and visitors alike well stocked on any front.



Retail Centers

- |  |  |
|--|--|
|  <b>Edgewater Place</b><br>901-999 Edgewater Blvd                   |  <b>Marlin Cove</b><br>1070-1098 Foster City Blvd     |
|  <b>The Marketplace at Metro Center</b><br>921-973 E Hillsdale Blvd |  <b>1000 Metro Center</b><br>100 Metro Center Blvd    |
|  <b>Beach Park Plaza</b><br>1455-1485 Beach Park Blvd               |  <b>Foster Square</b><br>710 Foster City Blvd         |
|  <b>The Plaza</b><br>1 Plaza View Lane                              |  <b>Chess Corner</b><br>1297 Chess Drive              |
|  <b>One Hundred Grand</b><br>100 Grand Lane                         |  <b>The Triton (coming soon)</b><br>1159 Triton Drive |



## Marlin Cove

Marlin Cove is a 56,000 square foot shopping center located at the southeast corner of a mixed-use community that includes 280 apartments and 18,000 square feet of medical office space in two levels above ground floor retail.

### Representative tenants

- After Ours Urgent Care
- Foster City Chiropractic Center
- Indy's Place Pet Hospital
- Ranch 99 Supermarket
- Round Table Pizza
- United Studios of Self Defense
- The UPS Store

## Edgewater Place

Edgewater Place is a 123,300 square foot community shopping center at the boardwalk facing the Foster City Lagoon. This center offers a unique waterfront experience with outdoor seating, and a boardwalk that includes two access points to floating mooring docks for small watercraft.

### Representative tenants

- Cooking Papa
- Gold Medal Martial Arts
- Kobe Japanese Cuisine & Bar
- Lucky Supermarkets
- The Tutoring Center
- US Bank
- Waterfront Mediterranean
- Zalles Racquet Sports

## Chess Corner

Located directly in front of Towne Place Suites, will be an 11,000- to 12,500-square-foot retail and restaurant center to serve the burgeoning Gilead Campus and surrounding office complexes. Chess Corner is the perfect place for fantastic food and speedy service.

### Representative tenants

- Fedex Office
- Mod Super Fast Pizza
- Panera Bread
- The Habit Burger Grill

## The Marketplace at Metro Center

The Marketplace at Metro Center is a 120,300 square foot shopping center located at the center of Metro Center, a corporate office park with 1.2 million square feet of office space that is home to major tenants such as VISA.

### Representative tenants

- Dreamers and Thinkers
- Five Guys
- Great Clips
- Metro Cleaners
- Orange Theory Fitness
- Safeway

## 1000 Metro Center

1000 Metro Center is an 8,000 square foot free-standing shopping center at the corner of Metro Center and Shell Boulevards. The Center is arranged along the street frontage and opens onto a rear parking lot with access to both major streets.

### Representative tenants

- Costco
- Jamba Juice
- Kindercare Learning Center
- Noah's New York Bagels
- Starbucks

## Beach Park Plaza

Beach Park Plaza is a 26,000 square foot neighborhood shopping center, located two miles east of the nearest Highway 92 exit, directly across Beach Park Boulevard from the SF Bay Trail.

### Representative tenants

- Akizu Sushi Bar & Grill
- Bellini Bistro
- MusicArt Studio
- PDA Dance Academy
- Sweet Basil Thai
- The Body Studio For Fitness
- Xtrim Bollywood

## Foster Square

Foster Square includes 35,000 square feet of neighborhood (Atria and Alma Point) and combined retail uses, together with a small stand-alone pavilion in the center of the Town Square/Plaza.

### Representative tenants

- Falafel Tazah
- Gobi Mongolian Grill
- India Cash & Carry
- Shiki Bento House
- Starbucks Coffee
- US Post Office

## The Plaza

The Plaza contains 8,100 square feet of ground floor retail located less than half a mile from the Foster City Boulevard exit off Highway 92. The Plaza opens onto a large lawn and plaza area with a play structure and picnic tables, and includes structured parking as well as curbside parking fronting the retail spaces.

### Representative tenants

- Butterfly Yoga
- Dozo Izakaya
- Penelope's Coffee & Tea
- Salon Q
- Sandwich Monkey

## 100 Grand

100 Grand is part of the Pilgrim Triton development, which encompasses a mixed use campus of office and living spaces, and 17,000 square feet of ground floor neighborhood commercial uses around a new park.

### Representative tenants

- Beautyshilp Services
- Foster City Chamber of Commerce
- Mathnasium
- Music Land School of Music





# FOSTER

RESOURCES THAT WILL  
CONTINUE TO SUPPORT  
US INTO THE FUTURE

ENVIRONMENT



# 73

RANKING FOR VISA ON TOP  
U.S. **100 GREEN COMPANIES**  
LIST OF 2017

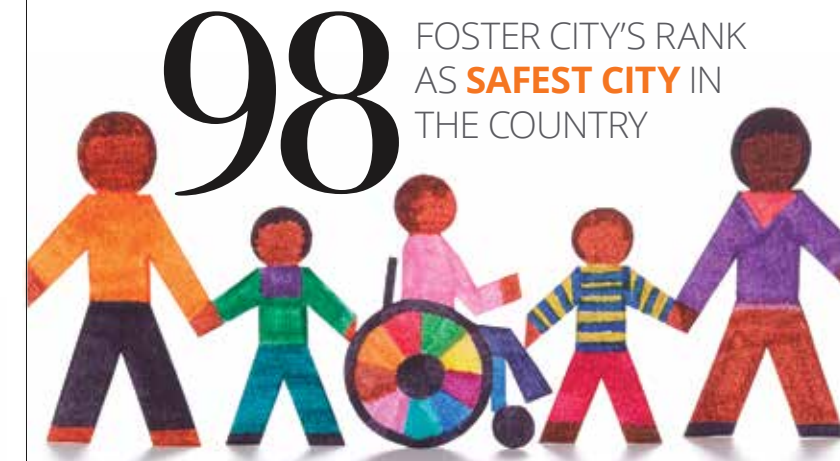
# 52

NUMBER OF  
**RESTAURANTS**  
FOUND IN THE CITY



# 900

RESIDENTS TRAINED  
AS **CERT MEMBERS**



# 98

FOSTER CITY'S RANK  
AS **SAFEST CITY** IN  
THE COUNTRY

# 13,417



TOTAL **HOUSING UNITS** IN TOWN

NUMBER OF **BEACON AWARDS**  
FOSTER CITY HAS WON



# 10

# 3

NUMBER OF YEARS IN A ROW VISA  
IS NAMED TO THE **DOW JONES**  
**SUSTAINABILITY** INDEX



# 24

NUMBER  
OF **PARKS**  
AROUND  
TOWN



# \$1,598,000

MEDIAN PRICE FOR A SINGLE FAMILY HOME IN FOSTER CITY





# The World's Mobility Future, Built Here

*A look at the ambitions of Zoox to create autonomous mobility from the ground up*

**T**he future of mobility is taking shape right here in Foster City.

Zoox, an autonomous vehicle company that moved here in 2018, is developing a fully-autonomous fleet of vehicles designed for a “Mobility-as-a-Service” future—one in which a moving around cities will be easier, more efficient, and accessible. Instead of selling you a personal car that sits idle for most of its life, Zoox wants to sell you the service, where you only pay for what you use.

Since its 2014 founding on the grounds of the Stanford Linear Accelerator (SLAC), Zoox has pursued its mission to help cities solve safety, mobility, and sustainability challenges. To do this, Zoox is taking a radically different approach to autonomous vehicle development—rather than incremental additions to vehicles that are optimized for human drivers, Zoox is building a new vehicle and system optimized around an AI driver.

In 2016, Zoox, then based in Menlo Park, needed room to grow.

Following early rounds of funding, the company began looking for a new headquarters space that would accommodate its growing workforce and ambitious mission.

That’s when Zoox set its sights on Foster City.

“We needed to find a location that could accommodate a fast-growing workforce from across the Bay Area and a facility that could handle both hardware and software development simultaneously,” said Jesse Levinson, Zoox co-founder and Chief Technology Officer. “Foster City helps us attract a workforce from San Francisco, the East Bay, and the South Bay.”

The company renovated a former pharmaceutical facility on Chess Drive and relocated there in 2018. Today, the company employs nearly a thousand people who are building a fully-autonomous battery-electric vehicle, the AI software stack that makes it drive, and the service platform that will allow it to operate in cities.



“Zoox is at the forefront of the next wave in mobility,” said Aicha Evans, Zoox Chief Executive Officer. “The transition from human-driven vehicles to AI will be as big as the transition from the horse and carriage to the gas-powered automobile.”

Zoox is currently testing its autonomous driving software and sensor configuration on modified Toyota Highlanders with safety drivers. The Highlanders are retrofitted with the sensors the AI system needs to perceive and detect other objects on the road and predict what those objects will do next.

“The software and the test vehicles have both been brought-up and developed in Foster City,” Evans said. “Our location here allows us to take what we develop and put it on the road for testing in San Francisco in an efficient manner.”

A 2018 Bloomberg Businessweek feature on Zoox showed how its Highlander fleet can navigate autonomously from its Foster City headquarters to its operations base in San Francisco. Zoox vehicles are able to handle almost any scenario—from San Francisco’s narrow, steep, and windy roads, to freeways, tunnels, six-way intersections and unprotected left turns.

Zoox is developing the vehicle, software, and service in unison because society’s demands are changing. Cities are becoming increasingly congested, polluted, and fraught with safety risks for road users. The battery-electric vehicles will be shared, meaning fewer vehicles on the road servicing more people.

*“The Zoox vehicle will make the steering wheel—the first thing that could kill you today in a conventional car crash—obsolete. It will also have 360-degree perception, removing the need for things like rear-view and side-view mirrors.”*

Mark Rosekind, Zoox Chief Safety Innovation Officer and former administrator of the National Highway Traffic Safety Administration (NHTSA)



## Preparing for the Future

While most other developers in the AV industry are working exclusively on AI software to make the vehicles drive, Zoox has designed a fully-autonomous battery-electric vehicle powered by machine vision from the ground up—in addition to AI software.

Zoox has not revealed details of the vehicle as of publication, but the company has stated that the first product that will be deployed is a four-passenger vehicle that has seats that face each other and doors that slide open.

Evans says that Foster City is integral to its plans for growth. Today, Zoox operates out of three Foster City properties. It plans to continue prototyping its new vehicle, developing its state-of-the-art AI software, and expanding testing here.

As for when you’ll be able to see the state-of-the-art fully autonomous vehicle on Foster City roads, Evans and Levinson say to “stay tuned.”

# ZOOX

To learn more, visit [zoox.com](http://zoox.com)

**36,560**

The number of people killed in car crashes in the U.S. in 2018

**94%**

A 2017 study from the NHTSA showed that human driver error caused 94 percent of over two million crashes in the US

**66%**

The UN forecasts that by 2050, just over two-thirds of the world’s population will live in megacities

**96%**

Today’s conventional human-driven cars, through a private ownership model, sit parked for 96% of their lives on average



# They Think. They're Playing.

If you ask the kids of San Mateo County what CuriOdyssey is, they would say, "It's fun!"

And that's just what CuriOdyssey intended. But it's also a science museum for young children based on powerful ideas about how kids learn. At CuriOdyssey, kids observe wild animals and experiment with real scientific phenomena. Their purpose is to teach essential science to children in the first decade of life.

They accomplish this by offering a comprehensive array of STEM education programs, over 60 hands-on interactive science exhibits and a wildlife program featuring 100 non-releasable native California animals.

CuriOdyssey is revolutionizing science education by going back to the fundamentals: Harnessing kids' in-born curiosity about animals and nature. The museum's wildlife, hands-on exhibits, programs, and play structures let kids explore and begin to understand natural laws. The kids think they are just having fun, but they are actually observing nature and figuring out how the natural world works, building the foundations of early interest in science.

This is key at a time when too many kids are deciding in elementary school that science is not for them and are abandoning the track to college and good jobs, despite the fact that 80% of the fastest-growing jobs require science fluency.



Visit CuriOdyssey, and watch your children's innate curiosity lead them to an early and lasting interest in science. Best of all, they'll think they're just having fun!

### San Mateo County's champion for early science learning

CuriOdyssey's ambitious vision is to become San Mateo County's champion for early science learning, increasing its impact by helping local elementary school teachers learn how to teach science, and through increased accessibility for the kids who need science enrichment most: those who are underserved or have special needs.

### Wildlife: The gateway to interest in science

CuriOdyssey is home to many rescued native California wildlife who act as animal ambassadors, connecting kids with the natural world and encouraging a lifelong stewardship of the environment. Visitors meet and learn about a wide range of animals including bobcats, eagles, owls, a river otter, fox, porcupine, opossum, reptiles and invertebrates. CuriOdyssey was just named one of the top 20 zoos in the country by USA Today, and has received a number of national awards for science education.

### Introducing the Physics-in-Action Play Area

In 2020 CuriOdyssey will break ground for a play area that not only illustrates physics concepts, but is accessible to kids of all abilities. Through a partnership with Magical Bridge, CuriOdyssey is becoming even more welcoming to kids with special needs, who already benefit from a way of learning that is self-directed and adaptive to each child's abilities.

### A San Mateo County Treasure

For many, CuriOdyssey has become a family tradition and one of the destinations that makes San Mateo County great. 190,000 people visited last year, many several times. More than 100 qualifying families benefit from CuriOdyssey's low-cost family memberships and 1500 qualifying individuals visited for free. Another 8,000 kids experienced CuriOdyssey's education programs in community schools and 9,696 kids and teachers visited CuriOdyssey for field trips. Annually, CuriOdyssey's 200 volunteers educate visitors and assist in conservation efforts that, for example, removed 825 gallons of trash and recyclables from Coyote Point Park last year.

### First Fridays Evening Celebrations

On the first Friday of every month, CuriOdyssey hosts an open house for parents and kids from 5:00 – 8:00, where all can enjoy food, drinks, and a band, and kids can meet the animals and play with fun science exhibits. The theme-oriented parties have become a popular community attraction for families in San Mateo County, who welcome the chance to hang out with their kids and other families at beautiful Coyote Point.

For more information and to plan your visit go to [curiodyssey.org/](http://curiodyssey.org/).





# Success in Numbers

How “Build Up for San Mateo County’s Children” is addressing our child care and preschool shortage

San Mateo County is experiencing a tremendous shortage of approximately 19,000 child care, preschool and after school spaces. Our community’s collaborative spirit and shared passion for helping every child receive the quality care they deserve is what’s going to close the gap.

## The Challenge

Available child care is a quality of life and workforce issue for both residents and employers. Ultimately, the shortage of available spaces is forcing working parents in the community to choose between less-than-ideal arrangements or turning down employment opportunities.

Gaps between child care supply and demand persist because of numerous barriers, including the high cost of real estate and construction, lack of availability of qualified staff, and the planning, zoning and permitting process. Recently, the county turned down \$1 million in state support for subsidized child care due to lack of facilities to house programs. Before programs can be built or expanded upon, these barriers need to be addressed.

Childcare availability doesn’t just impact families. It’s a critical piece of community infrastructure with massive economic implications. It interrelates with housing and



transit; child care sited near housing, jobs and transit reduces the number of cars on the road at any given time. A 2017 report showed that sixteen of San Mateo County’s twenty-seven zip codes are now considered “child care deserts.” Currently, families may drive an extra 45 minutes or more to get to quality care. San Carlos city officials, recognizing this issue, recently opted to exempt child care centers from paying traffic impact fees.

*The Brion Economics study estimated a need for \$420 million in capital funding to fill the gap of child care and preschool spaces.*

## The Solution

An Early Learning Facilities Needs Assessment report conducted by Brion Economics found that the shortage of early childhood facilities is a multisector issue requiring diverse perspectives and multiple types of stakeholders, such as school districts, faith-based organizations, corporations, nonprofits, cities and real estate developers.

The reality is that our entire community must rally together to create sustainable systems for children and the local economy to thrive. Fortunately, leaders in the community put their heads together and set this in motion with the creation of “Build Up for San Mateo County’s Children” in 2018.

Build Up seeks to alleviate the child care shortage through a four-part approach, informed by the recommendations of the Silicon Valley Community Foundation’s cross-sector Task Force: reuse of existing available space, inclusion of child care in new developments, partnerships with large employers and generating new capital funds. Through this model, Build Up’s ambitious goal is to increase the child care supply by 3,000 spaces in 2020.



## Moving the Needle

Gilead Sciences, Inc. became Build Up’s first corporate donor with a \$50,000 grant for its Child Care and Preschool Capital Fund. “Gilead hopes our funding will be a catalyst for other local businesses to partner with Build Up and grow an early childhood facilities fund to increase access to quality care,” said Joydeep Ganguly, Senior Vice President of Corporate Operations. As a leading employer in the county, with its own child care facility, Gilead is well-positioned to understand the challenges working families face and model employer best practices in contributing solutions to this shortage.



“These generous donations take us one step closer to ensuring that parents in San Mateo County can find affordable, high quality child care for their babies and toddlers,” said Michelle Sioson-Hyman, deputy director at Silicon Valley Community Foundation’s Center for Early Learning. Corporate and private donors have collectively contributed \$300,000 in capital funding to Build Up thus far in an effort to spur child care and preschool facilities development in San Mateo County. These funds will help bring approximately 100 new child care spaces to the region. Example grant recipients in the community include:

- Puente, a nonprofit serving the South Coast, received a capital grant to bring the first licensed infant child care program to this underserved area.
- Institute for Human and Social Development (IHSD), San Mateo County’s Head Start provider, received a capital grant to serve infants and toddlers in East Palo Alto, and a planning grant to determine the feasibility of adding an infant program in Half Moon Bay. In East Palo Alto, IHSD is leveraging a new Early Head Start grant to provide the program at no cost to low-income parents.
- The Redwood City School District received a planning grant to conduct a feasibility study for using vacant district classroom space for infant/toddler child care for staff.

Build Up’s leadership is provided by First 5 San Mateo County, the Child Care Coordinating Council (4Cs) of San Mateo County, the County of San Mateo, the San Mateo County Office of Education and the Center for Early Learning at Silicon Valley Community Foundation.

*Build Up is seeking additional philanthropic contributions at any level from individual and corporate donors to grow the Child Care and Preschool Capital Fund. For more information visit [BuildUpSMC.com](http://BuildUpSMC.com).*

# Not Just “Playing” Around

Hillbarn Theatre in Foster City marks 80 years!



Theatre has a long-standing tradition of getting to the heart of matters that affect human behavior. For 80 years Hillbarn Theatre and its Conservatory (now celebrating its 20th anniversary) have been a testament to shaping minds and warming hearts in the community. It's their contribution to humanity — to ease the burden of life, to make us laugh, to stir our emotions.

Since 1941, historic Hillbarn Theatre has served the San Francisco Bay Area by embracing this founding ideal: “To create theatre with the community, for the community.” They fulfill their mission by bringing together artists and audience members as part of an intimate Hillbarn family to experience engaging and inspiring theatrical productions, selecting program themes that entertain, explore the joys and sorrows of our common human experience, and celebrate our diversity.

Live theatre fulfills the essential human desire to expand our connection to the larger world and our empathy for lives lived differently from our own. It's where patrons come

to find pleasure, to ask questions, to understand themselves, and to negotiate society. The stories they tell provide a point of focus, a frame of reference, by which attendees come to better understand their place in the world as individuals and in their community. Hillbarn annually presents 6 MainStage shows. Their goal is to select plays and musicals that provoke conversation and debate, inviting us to recognize our similarities even as we appreciate our differences.

The hardest part of explaining the value of the creative arts is that it defies measurement. It's impossible to get inside the head of a patron who has just experienced live music, or dance or drama to assess data points of change. History tells us that all great civilizations used the performing arts as ways to express or challenge the moral values of the times. Biologists have argued that the formation of creativity was the most important step in human development and that society cannot move forward without creative people. Creativity can take place on stage or in the mind of the recipient of an art form offering respite from stress, challenging a belief, introducing a new concept, or building empathy.

Hillbarn Theatre Conservatory programs encourage children to question and explore how to live in a complex world so that they grow up HEALTHIER, SMARTER, and KINDER.

“Anyone who knows theatre well knows that theatre offers something completely different than TV and movies. There is immediacy in the live theatre; each performance is unique. You are in the present, in the moment, sharing an experience. I think we need that as human beings, and I can't think of many things that provide it.”

Dan Demers, Hillbarn Executive Artistic Director



Studies show that performing arts education improves children's cognitive development and academic success. It's not just about teaching them to sing or dance. It's about teaching them teamwork, time management, focus, discipline, confidence, and so much more. Hillbarn is dedicated to providing safe spaces for students to learn and grow through the arts as they create, collaborate, and build confidence.

American playwright, Lauren Gunderson, in *How Theatre for Young People Could Change the World*, says that, “so much of the toxicity in this world comes from a collective draining of empathy. We don't understand each other, and we don't want to. But theater invites us – no, forces us – to empathize.”

In our technological and media-driven world, the communal experience of live theater is increasingly important. Hillbarn Theatre continues to be a creative beating heart in a sea of technology. The theatrical experience requires no immediate responses to texts or emails; no photos or video that distract from experiencing the event live; no tweets, no posts, no demands! Engaging imaginatively in a work of art as a group and as individuals simultaneously, the audience experiences theatre's power; to make one feel more alive, to dream up new possibilities and to tell and be changed by stories in different ways that help each of us learn and evolve. Our Community needs us, and we need our community.

Come to Hillbarn and experience what live theatre can do for you!  
Visit [hillbarntheatre.org](http://hillbarntheatre.org)



# Service is a journey

The service journey is an approach to living well and making a real difference that people can see and feel through volunteerism.



For the Foster City Lions Club, their mission is service, and their service is visible. Its effects are measurable. Throughout the community you'll find tell-tale signs of projects that were brought together by Lions. Equipped with insight and inspired by opportunity, they practically support our communities, our regions, and our world together.



Chartered in 1967, the Foster City Lions Club has been a vital force in the development and growth of Foster City for over 50 years. It's one of over 46,000 clubs that are collectively known as International Association of Lions Clubs. The Foster City Lions Club includes over 70 members from all walks of life — accountants, contractors, engineers, retirees, small business owners and teachers. Its membership has also included past mayors and city council members. All share a common goal — to make the Foster City community a better place to live through personal involvement.

Foster City Lions believe if they aren't informed about what's happening around them, their impact may fall short. So, they cultivate an awareness of local needs and how they connect to a larger global narrative. They seek new information and turn it into insight and believe learning positions us all to be more effective. Serving humanity in over 200 countries, they take pride in their unique expressions of kindness found in each of their local clubs across the world.

"It's very rewarding to be involved with an organization that makes such an impact locally and throughout Northern California," said Ray Rosenthal, its membership director and past club president.



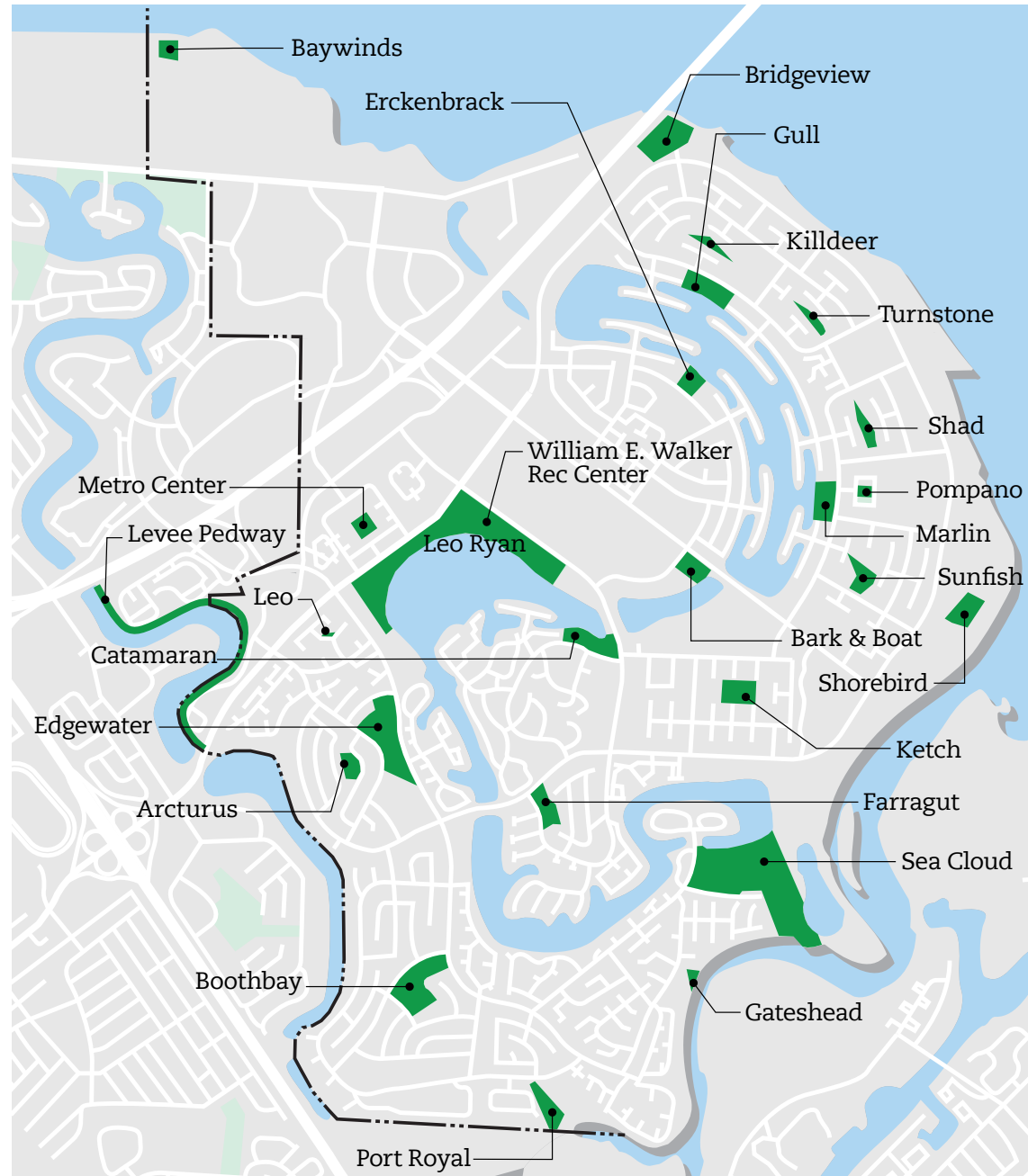
The club supports local non-profits such as Community Overcoming Relationship Abuse, Rebuilding Together, Samaritan House, and Special Olympics while lending a hand to neighboring communities having recently raised more than \$47,000 to assist the survivors of the destructive fires in Paradise.

"The club also serves as a role model for the youth," added Shikha Bakshi Hamilton, another past club president who is now spearheading a program to help disadvantaged students prepare for college entrance exams.

To learn more about the Foster City Lions Club visit [fostercitylions.com](http://fostercitylions.com)

# Park Stop

Foster City boasts over 160 acres of park and open space land including bike paths, dog exercise areas, a lighted softball field, numerous soccer and youth baseball fields, tennis courts, basketball courts, picnic facilities, bocce ball courts, walkways and pedway, and a wildlife refuge. In addition to hosting over 20 community events a year, the Parks and Recreation Department also offers a variety of classes, camps, and programs for all ages to enjoy!



Park Name	Amenities
Arcturus	Ballfield, Basketball Courts, Barbecue, Beach, Bike Path, Boat Launch, Children's Area, Community Bldg., Bocce Ball, Picnic Area, Restrooms, Soccer Fields, Tennis Courts, Volleyball Courts, Dog Playground
Baywinds	Ballfield, Basketball Courts, Barbecue, Beach, Bike Path, Boat Launch, Children's Area, Community Bldg., Bocce Ball, Picnic Area, Restrooms, Soccer Fields, Tennis Courts, Volleyball Courts, Dog Playground
Boat	Ballfield, Basketball Courts, Barbecue, Beach, Bike Path, Boat Launch, Children's Area, Community Bldg., Bocce Ball, Picnic Area, Restrooms, Soccer Fields, Tennis Courts, Volleyball Courts, Dog Playground
Boothbay	Ballfield, Basketball Courts, Barbecue, Beach, Bike Path, Boat Launch, Children's Area, Community Bldg., Bocce Ball, Picnic Area, Restrooms, Soccer Fields, Tennis Courts, Volleyball Courts, Dog Playground
Bridgeview	Ballfield, Basketball Courts, Barbecue, Beach, Bike Path, Boat Launch, Children's Area, Community Bldg., Bocce Ball, Picnic Area, Restrooms, Soccer Fields, Tennis Courts, Volleyball Courts, Dog Playground
Catamaran	Ballfield, Basketball Courts, Barbecue, Beach, Bike Path, Boat Launch, Children's Area, Community Bldg., Bocce Ball, Picnic Area, Restrooms, Soccer Fields, Tennis Courts, Volleyball Courts, Dog Playground
Edgewater	Ballfield, Basketball Courts, Barbecue, Beach, Bike Path, Boat Launch, Children's Area, Community Bldg., Bocce Ball, Picnic Area, Restrooms, Soccer Fields, Tennis Courts, Volleyball Courts, Dog Playground
Erckenbrack	Ballfield, Basketball Courts, Barbecue, Beach, Bike Path, Boat Launch, Children's Area, Community Bldg., Bocce Ball, Picnic Area, Restrooms, Soccer Fields, Tennis Courts, Volleyball Courts, Dog Playground
Farragut	Ballfield, Basketball Courts, Barbecue, Beach, Bike Path, Boat Launch, Children's Area, Community Bldg., Bocce Ball, Picnic Area, Restrooms, Soccer Fields, Tennis Courts, Volleyball Courts, Dog Playground
Bark	Ballfield, Basketball Courts, Barbecue, Beach, Bike Path, Boat Launch, Children's Area, Community Bldg., Bocce Ball, Picnic Area, Restrooms, Soccer Fields, Tennis Courts, Volleyball Courts, Dog Playground
Gateshead	Ballfield, Basketball Courts, Barbecue, Beach, Bike Path, Boat Launch, Children's Area, Community Bldg., Bocce Ball, Picnic Area, Restrooms, Soccer Fields, Tennis Courts, Volleyball Courts, Dog Playground
Gull	Ballfield, Basketball Courts, Barbecue, Beach, Bike Path, Boat Launch, Children's Area, Community Bldg., Bocce Ball, Picnic Area, Restrooms, Soccer Fields, Tennis Courts, Volleyball Courts, Dog Playground
Ketch	Ballfield, Basketball Courts, Barbecue, Beach, Bike Path, Boat Launch, Children's Area, Community Bldg., Bocce Ball, Picnic Area, Restrooms, Soccer Fields, Tennis Courts, Volleyball Courts, Dog Playground
Killdeer	Ballfield, Basketball Courts, Barbecue, Beach, Bike Path, Boat Launch, Children's Area, Community Bldg., Bocce Ball, Picnic Area, Restrooms, Soccer Fields, Tennis Courts, Volleyball Courts, Dog Playground
Leo J. Ryan	Ballfield, Basketball Courts, Barbecue, Beach, Bike Path, Boat Launch, Children's Area, Community Bldg., Bocce Ball, Picnic Area, Restrooms, Soccer Fields, Tennis Courts, Volleyball Courts, Dog Playground
Leo Park	Ballfield, Basketball Courts, Barbecue, Beach, Bike Path, Boat Launch, Children's Area, Community Bldg., Bocce Ball, Picnic Area, Restrooms, Soccer Fields, Tennis Courts, Volleyball Courts, Dog Playground
Levee Pedway	Ballfield, Basketball Courts, Barbecue, Beach, Bike Path, Boat Launch, Children's Area, Community Bldg., Bocce Ball, Picnic Area, Restrooms, Soccer Fields, Tennis Courts, Volleyball Courts, Dog Playground
Marlin	Ballfield, Basketball Courts, Barbecue, Beach, Bike Path, Boat Launch, Children's Area, Community Bldg., Bocce Ball, Picnic Area, Restrooms, Soccer Fields, Tennis Courts, Volleyball Courts, Dog Playground
Pompano	Ballfield, Basketball Courts, Barbecue, Beach, Bike Path, Boat Launch, Children's Area, Community Bldg., Bocce Ball, Picnic Area, Restrooms, Soccer Fields, Tennis Courts, Volleyball Courts, Dog Playground
Port Royal	Ballfield, Basketball Courts, Barbecue, Beach, Bike Path, Boat Launch, Children's Area, Community Bldg., Bocce Ball, Picnic Area, Restrooms, Soccer Fields, Tennis Courts, Volleyball Courts, Dog Playground
Sea Cloud	Ballfield, Basketball Courts, Barbecue, Beach, Bike Path, Boat Launch, Children's Area, Community Bldg., Bocce Ball, Picnic Area, Restrooms, Soccer Fields, Tennis Courts, Volleyball Courts, Dog Playground
Shad	Ballfield, Basketball Courts, Barbecue, Beach, Bike Path, Boat Launch, Children's Area, Community Bldg., Bocce Ball, Picnic Area, Restrooms, Soccer Fields, Tennis Courts, Volleyball Courts, Dog Playground
Shorebird	Ballfield, Basketball Courts, Barbecue, Beach, Bike Path, Boat Launch, Children's Area, Community Bldg., Bocce Ball, Picnic Area, Restrooms, Soccer Fields, Tennis Courts, Volleyball Courts, Dog Playground
Sunfish	Ballfield, Basketball Courts, Barbecue, Beach, Bike Path, Boat Launch, Children's Area, Community Bldg., Bocce Ball, Picnic Area, Restrooms, Soccer Fields, Tennis Courts, Volleyball Courts, Dog Playground
Turnstone	Ballfield, Basketball Courts, Barbecue, Beach, Bike Path, Boat Launch, Children's Area, Community Bldg., Bocce Ball, Picnic Area, Restrooms, Soccer Fields, Tennis Courts, Volleyball Courts, Dog Playground
Wm. E. Walker	Ballfield, Basketball Courts, Barbecue, Beach, Bike Path, Boat Launch, Children's Area, Community Bldg., Bocce Ball, Picnic Area, Restrooms, Soccer Fields, Tennis Courts, Volleyball Courts, Dog Playground

## Amenities

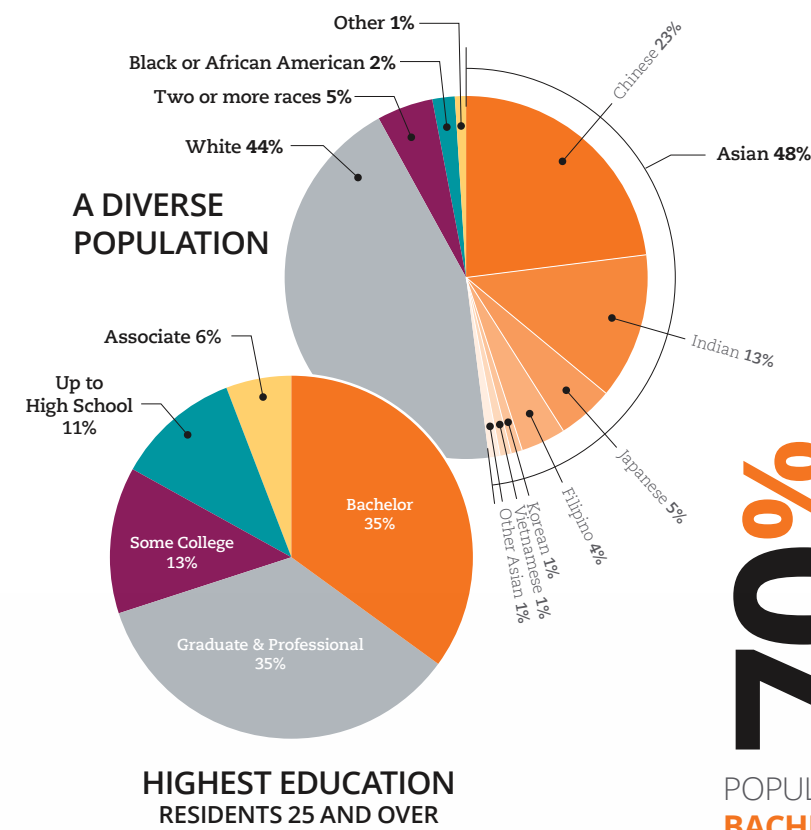
- Ballfield
- Basketball Courts
- Barbecue
- Beach
- Bike Path
- Boat Launch
- Children's Area
- Community Bldg.
- Bocce Ball
- Picnic Area
- Restrooms
- Soccer Fields
- Tennis Courts
- Volleyball Courts
- Dog Playground

<b>Arcturus Park</b>	Arcturus Circle off Polaris Ave	Arcturus Park offers 3/4 acre of playground area, small lawn area, and a tiny tot play area.
<b>Baywinds Park</b>	E. 3rd Ave & Lakeside Dr.	This is one of Foster City's newest parks! It is located on Beach Park, right behind Mariner's Point Golf Center. With a restroom and its prime location on the levee, it is the perfect spot to take a break and enjoy the view!
<b>Boat &amp; Bark Park</b>	Bounty Drive and Foster City Blvd.	With access from Bounty Drive, Boat Park is a 3.2 acre boat launching facility, including parking, a boardwalk, picnic tables, and a lawn area. Adjacent to Boat Park and using the same parking lot is Bark Park. Bring your canine friends and enjoy a wonderful day of games and fun! The 20,000 sq. ft. area includes separate fenced areas for large and small dogs, synthetic turf and decomposed granite surfaces, as well as a watering station. There are also tables and benches for human relaxation after a long day at play.
<b>Boothbay Park</b>	Boothbay Avenue and Edgewater Blvd.	Boothbay Park offers 11.2 acres of playground area, a sand volleyball pit, lawn area, a basketball court, four tennis courts, a tiny tot play area, barbecue pits, a small amphitheater seating area, and restroom facilities. The rental space is a large covered picnic pavilion.
<b>Bridgeview Park</b>	Beach Park Blvd and Teal St.	Bridgeview is one of Foster City's newest parks! With picnic benches and a restroom it is a great spot for a picnic, or a nice spot to hop on the levee for a walk, run, or bike!
<b>Catamaran Park</b>	Catamaran Street at Shell Blvd.	This beautiful 5.8 acre park offers a chance for a moonlight (or midday, for that matter!) stroll along the Lagoon with a view of downtown Foster City as a backdrop. Catamaran Park offers a large turf area, beach area, picnic area, basketball court, play apparatus, two lighted tennis courts, sand volleyball pit, and restroom facilities.
<b>Edgewater Park</b>	Edgewater Blvd. between E. Hillsdale and Beach Park Blvds	Edgewater Park is 9.5 acres with large lawn areas, lighted softball diamond, basketball court, playground area, and tennis courts.
<b>Erckenbrack Park</b>	Niantic Dr. between Polynesia Dr. and Balclutha Dr.	Erckenbrack Park offers 3.4 acres of lawn area, a sandy beach, a children's playground, and restroom facilities. The access to the beach is gated for child safety. The rental space is uncovered picnic tables.
<b>Farragut Park</b>	Farragut at Beach Park near Shell	Farragut Park offers a large lawn area, picnic tables, benches, small sand box, play apparatus, and restroom facilities. There is also a pathway that circles the park and makes for a great walking/running loop, or a safe place for kids to bike/scooter away from traffic.
<b>Gateshead Park</b>	Baffin Ct. and Cornwallis Ln.	A small, serene neighborhood park near the Belmont Slough and the levee walkway, Gateshead Park provides shade trees, drinking fountains, and picnic tables perfect for small outings.
<b>Gull Park</b>	Gull Avenue between Killdeer Ct. and Swan St.	Gull Park offers 3.1 acres of space, a sand beach, two playground areas, swings, slides, a large lawn area, and restroom facilities. The rental spaces are uncovered picnic tables.
<b>Ketch Park</b>	End of Topsail Ct. off of Schooner St.	Award winning Ketch Park features 1.6 acres of lawn, playground area, basketball court, and a gazebo suitable for a small picnic.
<b>Killdeer Park</b>	Killdeer Court off Gull Ave	Killdeer Park is 2.4 acres of playground area, swings, a sand beach (with an ever present guardian!) and lawn area.
<b>Leo J. Ryan Park</b>	East Hillsdale Blvd. across from The Marketplace	Leo J. Ryan Memorial Park offers 20 acres of lawn areas, lagoon access, a gazebo on the lagoon, and restroom facilities. The rental space includes uncovered picnic table son the hilltop.
<b>Leo Park</b>	Leo Dr. at Jupiter Ct.	One of Foster City's smaller neighborhood parks, Leo offers a grass area with shade trees and a bench. A nice place to relax on hot summer days!
<b>Levee Pedway</b>		The Bay Trail here treads the boundary between the natural and the manmade. On one side of the trail, children play in playgrounds surrounded by manicured lawns behind their backyard fences. On the other side, spear-billed egrets wade in the pickleweed marshes probing the waters for food. Nearer the San Mateo-Hayward Bridge, cars hurry by along the road paralleling one side of the trail, while the wind-whipped waves of San Francisco Bay crash into the rocky shoreline on the other side.
<b>Marlin Park</b>	Marlin Ave. at Pompano between Swordfish and Tarpon	Marlin Park offers 3.1 acres of a sandy beach, playground area, and large lawn area. The rental space is uncovered picnic tables.
<b>Pompano Park</b>	Pompano Circle off Marlin Ave.	One of Foster City's smaller parks, Pompano (1/2 acre) offers a nice lawn area perfect for that afternoon picnic!
<b>Port Royal Park</b>	Port Royal Ave. at Thatcher Lane and Timberhead	Tucked into the southern-most point of Foster City, Port Royal Park offers 4 acres of soccer fields, restrooms, play apparatus, and walkways for a lovely afternoon stroll.
<b>Sea Cloud Park</b>	Sea Cloud Drive off Pitcairn	Play Ball!!! Sea Cloud Park has been called the "sporting gem" of the Peninsula. It is the home of the Foster City Little League and offers more than 23 acres of baseball diamonds, soccer fields, lawn area, play apparatus, snack shack, batting cages, and restrooms.
<b>Shad Park</b>	Shad Court and Surferperch Street off of Marlin	Shad Park provides 2.1 acres of lawn area, playgrounds, basketball court, and a multi-purpose court.
<b>Shorebird Park</b>	Beach Park Blvd and Halibut St.	With 3.5 acres, Shorebird Park offers Bay Trail access, picnic tables, and a restroom.
<b>Sunfish Park</b>	Sunfish Court and Cod Street off of Marlin	With 2.4 acres, Sunfish Park offers a playground, a multi-purpose court and lawn area.
<b>Turnstone Park</b>	Turnstone Court off Gull Ave.	Turnstone Park offers a 1.5 acres of playground equipment, a lawn area, and a basketball court. There also a sand pit for the kids.
<b>William E Walker Recreation Center</b>	650 Shell Boulevard	The William E. Walker Recreation Center is located at 650 Shell Boulevard. This is a multi-purpose facility designed to meet the recreational needs of the Foster City community. Many of the classrooms feature a view of the Lagoon and are perfect for meetings, workshops or small parties. For larger meetings, parties, weddings or special events, the Lagoon Room is one of the premiere banquet halls on the Peninsula. It features hardwood flooring, a wet bar and a spectacular view of the Lagoon.

# FOSTER

JUSTICE AND FAIRNESS TO ALL LIVING IN OUR COMMUNITY

FOSTER CITY SOCIAL JUSTICE



RANKING FOR GILEAD SCIENCES, FORBES **WORLD'S BEST EMPLOYERS** 2019

70%



POPULATION OVER 25 WITH A **BACHELOR'S DEGREE** OR HIGHER

900

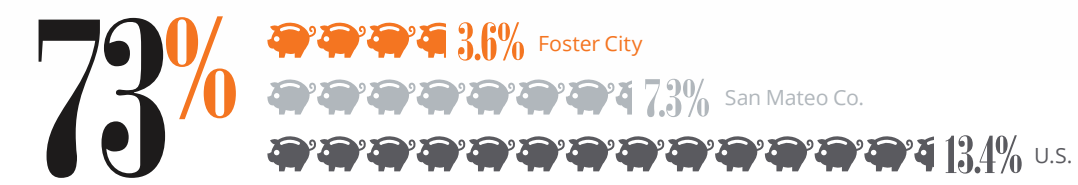
NUMBER OF ELEMENTARY AND MIDDLE SCHOOL **GRADUATES OF GREAT** (GANG RESISTANCE EDUCATION AND TRAINING)

10

VISA RANKING ON FORBES "2019 BEST EMPLOYERS LIST FOR **DIVERSITY**"



LOWER **POVERTY LEVEL** IN FOSTER CITY THAN U.S. AVERAGE



FOSTER CITY'S RANKING AS **MOST DIVERSE** SCHOOL DISTRICT IN CALIFORNIA (THAT'S IN THE TOP 11%)

72 OUT OF 742



**COLLEGES** WITHIN 15 MILES OF FOSTER CITY

14

- 4 mi. Notre Dame de Namur University Belmont
- 5 mi. College of San Mateo San Mateo
- 5 mi. Draper University San Mateo
- 8 mi. Cañada College Redwood City
- 9 mi. Menlo College Redwood City
- 10 mi. Stanford University Redwood City
- 13 mi. Skyline College Redwood City
- 9 mi. Heald College Hayward
- 10 mi. Chabot College Hayward
- 12 mi. Cal State University East Bay Hayward
- 13 mi. ITT Technical Institute Oakland Oakland
- 15 mi. Argosy University SF Bay Area Alameda
- 15 mi. College of Alameda Alameda
- 15 mi. Mills College Oakland



100%

SCORE GILEAD SCIENCES ANNOUNCES ON 2018 HUMAN RIGHTS CAMPAIGN **CORPORATE EQUALITY INDEX**

Stats not expressly credited, source: City of Foster City, FY 2018-2019

© Photo by Michael Filippoff





# An Enduring Community Working Together

*Samaritan House champions a history of success in the fight against poverty.*

Just a 5 minute drive from Foster City, the Samaritan House headquarters in San Mateo showcases an operation serving a full breadth of essential services and personalized support to the working poor. It is the largest truck-to-table food distribution agency in the county and offers free accessibility to shelter, medical and dental clinics, clothes for children, personalized case management and more. Since 1974, Samaritan House has kept clients fed, clothed, healthy, and housed.

One such individual is Sarah, a resident on the Peninsula and a mother of four. She is just one example of resilience in this unceasing cycle of life. She manages her rent and monthly expenses through work, but began going to Samaritan House at the end of 2015 for food assistance. The food pantry helps offset hundreds of dollars a month in expenses that would otherwise make monthly bills difficult to manage. With help from the Back to School Program, the Holiday Program, and Kids Closet too, Sarah's children have received clothing, new backpacks full of school supplies, and even holiday gifts. When every person has the resources he or she needs, stability is created so that they may remain an active, successful part of the community.

Every school within the San Mateo Foster City School District participates in an empathy-building program called Project WEECare, as do more than 30 schools in the area. In the program, children learn about the issues of poverty and how they can help. WEECare initiatives are integrated into established school service learning programs where schools commit to undertake four collection drives over the school year. By providing the tools for local poverty awareness and empathy building, the program encourages conversation and action among children, teachers, and parents.

The Bay Area is the birthplace of life changing technology and forward thinking geniuses. It is an area of great wealth and opportunity, but a growing crisis hides underneath. It is a crisis that affects the working poor, the ones who actually support comfortable lifestyles. It affects the security guard sleeping in his car, the teacher whose emergency room visit put her a month behind rent, or the mom working three jobs to keep her kids fed and warm. Economic disparity has pushed those the community depends on into survival mode, and it's not pretty.

While tackling poverty is anything but easy, it's true that many hands make light work. From Genentech in South San Francisco to Facebook in Menlo Park, corporate and organization volunteers help Samaritan House connect almost 15,000 clients a year to the resources they need across San Mateo County. Whichever way one turns, a person is likely to run into an individual, organization, or school in Foster City involved with Samaritan House.

Corporations from Gilead Sciences, VISA Inc., and Costco to community organizations such as the City of Foster City, the Rotary Club, the Police and Fire Departments, Foster City Lions Charities, Pacific Skyline Council Boy Scouts, Bayside Community Church, Atria at Foster Square, Ronald C. Wornick Jewish Day School, Mid-Pen Housing, and Foster City Chamber of Commerce frequently serve in giving or volunteerism.

*"I witnessed Samaritan House's unique ability in uniting those in need with those willing to step up and meet those needs. I love Samaritan House because 'our' mission is to help our fellow human beings in the most efficient and intimate manner."*

Former Mayor of Foster City and longtime Samaritan House supporter, Pam Frisella



Here, great wealth and opportunity coexist with poverty and systemic inequality. In this context of growing economic disparity, Samaritan House is ensuring the working poor aren't invisible. Together, this enduring community is in the fight to break the cycle of poverty.

**14,902** clients served through comprehensive programs that lift the working poor towards a **healthy, stable, and self-reliant life.**

**1,375,622** meals served to families, seniors and individuals to **prevent hunger.**

**3,675** volunteers devoted to **relieving the pressures of poverty.**

**54,206** pieces of children's clothing and shoes distributed to **keep kids clothed.**

To learn how you can make a difference, visit [samaritanhousesanmateo.org](http://samaritanhousesanmateo.org)





# Getting an early Boost.

Preparing San Mateo County's kids to be reading proficiently by third grade



In 2011, San Mateo County leaders were presented with the startling data that despite being in the top 1% of affluent counties in the nation, 45% of kids were not reading at grade level by third grade. The statistic rises to a shocking 60% among Latinx, African American and Pacific Islander children and 75% among low-income children of color.

This matters because until third grade, children learn to read. After third grade, they must read to learn and if they are not reading proficiently by this critical benchmark, the opportunity gap widens and it becomes increasingly difficult for them to be academically successful. Not only is this an

equity issue but according to Professor James Heckman, Nobel Laureate in Economics, not investing early on is an economic issue and his research has shown that investing before age five renders a 13:1 return on investment in cost savings to the criminal justice, healthcare and social services systems, and increased contributions to the workforce and local economy.



The Big Lift™ is a bold social venture that seeks to give kids the boost needed in the early years so that they enter kindergarten ready to read by third grade and succeed in life. Their goal is to move the needle in San Mateo County from 50% to 80% of kids' reading proficiently by third grade.



This nationally-recognized collective impact model involves collaboration between 300+ organizations, driven by the vision and leadership of the County of San Mateo, Silicon Valley Community Foundation and San Mateo County Office of Education. With start-up funding provided by San Mateo County's Measure A and then Measure K half-cent, voter-approved sales taxes, The Big Lift has drawn down significant funding from the Corporation for National and Community Service White House Social Innovation Fund, W.K. Kellogg Foundation, First 5 San Mateo County, The Packard Foundation, Google.org, Silicon Valley Social Venture Fund (SV2), Genentech, Gilead and Heising-Simons Foundation, as well as partnered with national leaders including the Campaign for Grade Level Reading, RAND Corporation, BellXcel, Stanford Graduate School of Business Alumni Consulting Team, and Harvard Kennedy School.

Eleven school districts in San Mateo County have reading proficiency rates below 50% and, to date, The Big Lift has been implemented in seven of those districts: Jefferson Elementary School District, South San Francisco Unified School District, San Bruno Park School District, Cabrillo Unified School District, La Honda-Pescadero Unified School District, Ravenswood Elementary School District, and Redwood City School District. Families participating in The Big Lift are 73% dual language learners with an average family income of \$38,000 annually, in stark contrast with San Mateo County's median household income of \$116,000.

**3900+** kids received high-quality preschool in 99 newly created or enhanced classrooms

**200+** teachers received an average of 40 hours of professional coaching and development

**92,800** books distributed to families through Raising A Reader

**50%** increase in the amount of time families engaged in literacy activities in the home

**7,300** cumulative gain in school day attendance and 10% reduction in chronic absenteeism as a result of targeted messaging to families on the importance of attendance

**1,200+** kids participate annually in a full-day, four-week Inspiring summer experience including intensive literacy curriculum and STEAM activities

The Big Lift program consists of four key interventions based on the Annie E. Casey Foundation framework – **Quality Preschool, Family Engagement, School Attendance, and Inspiring Summers** – that are further supported by rigorous evaluation and data collection, preschool to third grade alignment, and collaborative building.

Embarking into Year Five of The Big Lift, partnerships from education, nonprofit, philanthropy and corporate sectors continue to strengthen and enrich the program. Creative partnerships and the data-driven approach continue to ensure The Big Lift is at the cutting edge of best practices. Preliminary data shows that The Big Lift kids are more ready for kindergarten than their demographically-similar peers, that they are achieving three-month reading gains over summer instead of learning loss, and that the culture of literacy is growing in the home.

The Big Lift collaborative is continuously growing and has galvanized the community around a single metric – getting 80% of county kids reading proficiently by third grade. When kids are reading proficiently, succeeding academically, and engaged in learning, everyone wins.

Lift up San Mateo County kids, visit [thebiglift.org](http://thebiglift.org).



# Open for Exploration

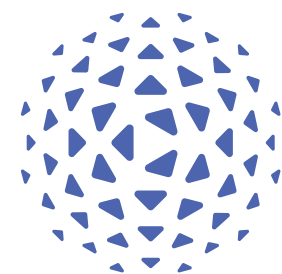
San Mateo County Libraries are igniting growth in the community

At San Mateo County Libraries, one simple tagline embodies everything they do—Open for Exploration. It speaks to their role in enriching the community, supporting unparalleled access to information and ideas, celebrating open-mindedness and life-long learning, and providing a welcoming atmosphere for all.

If you step foot inside one of their 12 community libraries, you might see and hear something that surprises you: perhaps the gentle buzz of a 3D printer; an “ooh and aah” from a senior looking through a Virtual Reality headset for the first time; or a eureka from an entrepreneur eagerly planning the next big startup.

San Mateo County Libraries are a four-star library system that ranks sixth in the state of California, according to the Library Journal. More than 67 percent of their service area has a library card and nearly 2.1 million people visit them annually.

The library system is a springboard for opportunity, particularly for the business community. The libraries offer physical workspaces and meeting rooms for small businesses, provide numerous free online resources, and inspire innovation and creativity in future generations of entrepreneurs. The libraries also help connect businesses with hireable employees. Their partnership with an online degree program gives residents a chance to earn a diploma and a career portfolio.



San Mateo County Libraries

To explore with San Mateo County Libraries, visit [smcl.org](http://smcl.org)

San Mateo County Libraries are more than just books. They're...

- **Supporting small businesses.** Free online resources include access to invaluable tools, such as: thousands of top business journals; courses and programs for business skills training and career development; and databases ideal for sales leads and market research. With a full range of free design software applications, the libraries' digital media stations are popular among small businesses and freelance workers.
- **Unique, free programs and events.** Last year, the libraries hosted more than 12,000 dynamic programs and events, including marketing classes for teens and adults, and financial planning courses made possible through local partnerships. Library visitors can also create at social painting and sewing events, jam out with friends at music clubs, add to their reading list at book clubs, or tinker at Maker programs with laser printers and robots—there's something for every age and activity.
- **3.7 million items circulated.** The libraries have a broad collection of items consisting of books, eBooks, audio books, movies, music and more. Their collection is constantly growing to stay fresh and is available in up to seven languages. To help bridge the digital divide, they offer free Wi-Fi hotspots and laptops available for checkout. Keep an eye out for special inventory you'd never expect at a library, like a ukulele or GoPro.
- **Invaluable community resources.** Your library card unlocks a world of free resources. Students can access homework coaching and free educational databases. Professionals can grow with free professional development training. Other resources include language-learning software, veterans services, coding classes and more.

### Fine-free libraries!

San Mateo County Libraries made a transformative announcement in 2019; their libraries are now fine-free! So, go ahead and pick up that best-seller or take full advantage of any library resource without the fear of fines holding you back.



“An elderly patron came to a virtual reality program and asked to view his hometown in China. As I helped him into the VR headset, he gasped in surprise and quickly began pointing out landmarks to his granddaughter. It wasn't until after he took off the headset that we realized he had been crying tears of joy. I'm proud to work for a library that provides technologies like this that not only bridge generations but make connections to personal histories.”

Library Staff Member



San Mateo County Libraries are located in Atherton, Belmont, Brisbane, East Palo Alto, Foster City, Half Moon Bay, Millbrae, Pacifica, Portola Valley, San Carlos and Woodside, and their service area includes unincorporated areas of the County. Their outreach services, including a full-service library on wheels called the Bookmobile, allow them to deliver essential library programs and services throughout the district.





# People of Action

*Rotary provides a path to serve the community and participate in global projects*

The Rotary Club of Foster City is made up of “People of Action.” The Club participates in projects that benefit communities locally and around the world.

Internationally, Rotarians are made up of 1.2 million neighbors, friends, and community leaders who come together to create positive, lasting change in local communities and around the world. Rotarians come from a diverse background and unite to exchange new ideas, apply expertise, and implement improvements that transform communities.

Rotary’s signature project is their fight against polio. In 1988, Rotary International had a dream of fighting and eradicating polio forever. Forty years later through Rotary’s efforts, polio has been reduced by 99.9%. Recently, the Bill and Melinda Gates Foundation has joined Rotary and matches donations, dollar for dollar. Foster City Rotarians along with thousands of others from around the world, travel to India, Pakistan, Afghanistan, Nigeria and other places where Polio still exists.



## Rotary Foster City

The Club participates in many projects benefiting the community. Each year they provide illustrated dictionaries to third grade students. Working with the San Mateo High Interact Club, the Rotary Club of Foster City installs playgrounds at the Yurok Indian Reservation. Before the Rotarians started this project, there were no playgrounds for the Yurok children to use or enjoy. Thanks to the efforts of local Rotarians, there will soon be five playgrounds. This project not only provides recreation activity to the Yurok children, but also teaches San Mateo High students how to plan, serve, and lead.

Joining a Rotary Club is also a great way to meet new friends and have a great time. The Club has several socials throughout the year, and takes trips to see plays, sporting events, and other fun places.

Rotary also provides its members with a great way to develop your business and organizational skills. Through the Potential Rotary Leaders Seminars (“PRLS”) you can learn valuable skills such as communications, public speaking, organization, and much more. These skills go beyond Rotary and are useful in any field.

The Rotary Means Business Program provides ways to meet fellow business leaders and professionals in your community and beyond. Club meetings, regional Rotary Means Business Meetings, and other conferences will give you the opportunity to network with others and learn about the business climate. You can attend a Rotary International Convention and meet leaders from more than 33,000 Rotary clubs in over 200 countries.

### Helping the community

- **Distribute food** to those in need
- **Clean up** Highway 92
- Support the local **Boy Scout troops**
- **Tend to the roses** in Leo Ryan Park and at the Foster City Library
- Provide close to \$20,000 annually in **scholarships to local students.**
- **Provide grant monies** to numerous charitable organizations, as well as the Foster City elementary schools, and Bowditch Middle School

Rotary provides a path to serve your community, participate in global projects, network with others, learn important skills, but most of all - HAVE FUN!!

*To learn more, please contact:  
FCRotaryPresident@gmail.com*



# What is a Village?

*Village members engage in service to improve their communities through volunteerism, advocacy, and collaboration.*



**M**erriam-Webster's dictionary defines a "Village" as a settlement, usually larger than a hamlet and smaller than a town; an incorporated minor municipality. Yet, in the context of the modern world, where people can instant message or Facetime with someone on the other side of the world in real-time but yet don't even know their next door neighbor, geographical distinctions and borders are not relevant as they no longer limit mobility and access.

In this global landscape, the term "Village" has come to take on a new meaning. It can be applied to almost any type of community, enclave, or group, either geographically or virtually. Think of the African proverb "It takes a Village to raise a child". In today's world, that Village could be a neighborhood, a local parents club, an online support group or forum, co-workers, a team, extended family, etc... What is it that makes these groups of people a "Village"? It is not necessarily a physical location, it is more the sense of belonging, and shared values. The essence of "Village" is a community that works together towards common goals.

The popularity of the concept of "village" is evident in the Village Movement, which started with the Beacon Hill Village in Boston over 15 years ago. Currently, there are over 240 open Villages and more than 100 in development in 41 states and the District of Columbia. The premise of the Village Movement is to create a community, a "Village" committed to helping members age in a place of their choosing, closely connected to their communities and with the support and tools they need to create a successful aging plan of their own design. In an effort to expand the Movement, the Village-to-Village Network was created as a national organization to foster the development, growth, impact and sustainability of individual Villages. "The Network provides expert guidance, resources and support to help communities establish and maintain Villages."

Villages form key partnerships with businesses, community groups, and organizations to provide volunteer services including transportation, health and wellness programs, home repairs, social and educational activities and access to vetted and discounted service providers for their members. These services, while meeting essential needs, also serve to enhance interactions and connections to the larger community. The Village also seeks to improve the lives and health of members with better access to health care services and increased confidence to live independently and have a better quality of life.

*A Village reflects the community it serves and transforms the "Silver Tsunami" into a "Silver Reservoir" that grows and strengthens its community.*

The Foster City Village has become a dynamic force in the lives of older adults in Foster City and Mariners Island, San Mateo. It was the first Village formed in San Mateo County. Foster City Village has been an advocate for older adults in the community in need of personal services to enable them to continue living in their homes and neighborhood as they age with grace and dignity. Through generous local donations (individuals, foundations, corporate grants and fundraisers), membership dues have been kept at \$365 per year (\$1 per day), since chartering as a non-profit 501(c)(3) on February 14, 2013. These donations enable Foster City Village to expand classes, special events, and programs for the community at large, and support the Assisted Membership Program for those who qualify for below market-rate housing.

Through the establishment of the Foster City Village, and its involvement and participation in the greater region, Foster City has become a leader in the region to champion Age Friendly Initiatives. In fact, in the September 2019 report Wallethub.com ranked Foster City as #14 of Best Cities to Retire in California.



*To learn more about the Foster City Village, visit [fostercityvillage.org](http://fostercityvillage.org)*



Fostering Enriching Opportunities



Supporting Overall Well-Being



Creating Social Connections

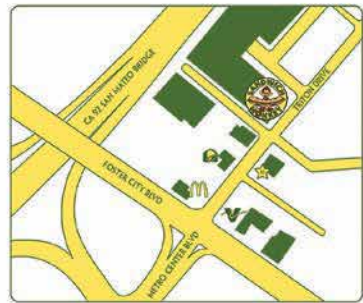


A Different Perspective: Photography through a Glass Ball  
Ideal weather conditions - an exotic morning sunrise above the Leo Ryan Park, epic cloud formations and completely calm water - captured through the lens of a glass sphere by Shreenivasan Manievanan. Shreeniclix Photography is an award winning nature and travel photographer, GoPro workshop instructor and social media contributor for BBC Earth. Shreeni is a member of the Foster City Chamber of Commerce, local Foster City resident and valued community partner.

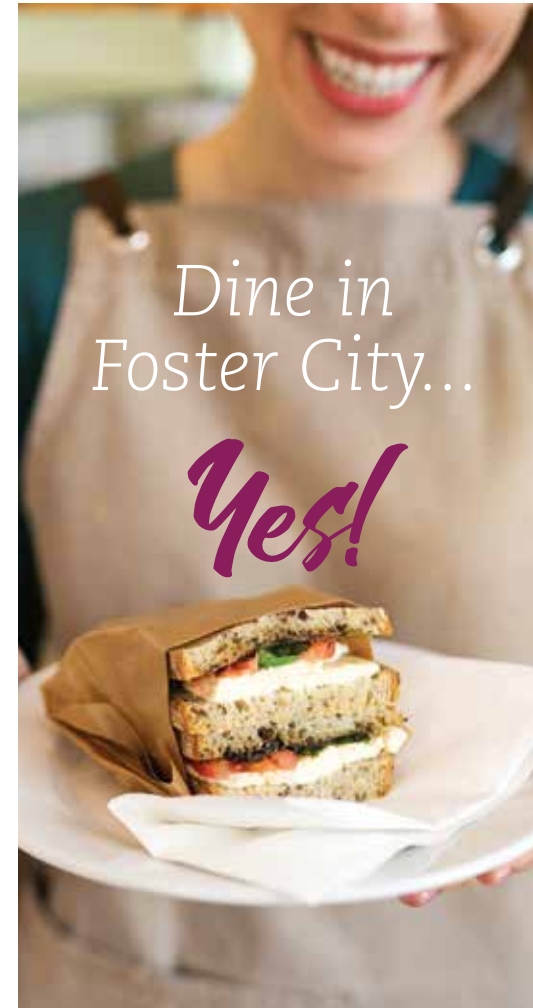


COME MONKEY AROUND!

- ORDER ON FACEBOOK  
FACEBOOK.COM/THESANDWICHMONKEY
- DOWNLOAD OUR FREE  
IPHONE APP
- ORDER FROM OUR WEBPAGE  
THESANDWICHMONKEY.COM



3 Plaza View Ln.  
Suite V  
Foster City,  
California 94404  
650.274.0264



# Sunday Champagne Brunch

10:30am - 2:00pm

Offers an amazing spread of fresh shellfish, seafood, salads, made to order omelettes & entrees with carvery stations & desserts



Join us for  
Easter • Mother's Day • Father's Day  
Thanksgiving & Christmas Brunch



RESERVATIONS REQUIRED  
Search "Cafe Florian"

1211 Chess Drive, Foster City • 650-570-5700 • www.eventscp.com



# TAKE YOUR SEAT

## American

### Café Florian (10)

Crowne Plaza Hotel  
1221 Chess Dr.

Café Florian serves breakfast, lunch, dinner and Sunday Champagne Brunch in the Crowne Plaza Hotel's garden atrium lobby.

### Carl's Jr. (3)

Triton Dr.  
www.carlsjr.com

Carl's Jr. provides a quick breakfast, lunch or dinner from its traditional and Green Burrito menus.

### Clubhouse Bistro (10)

Crowne Plaza Hotel  
1221 Chess Dr.  
www.clubhousebistro.com

Clubhouse Bistro serves dinner in its exciting upscale club with a brick fire oven and full bar with drink specialties.

### Five Guys Burgers and Fries (5)

Metro Center  
933 E Hillsdale Blvd  
www.fiveguys.com

The place to get a fresh, juicy burger. With all the toppings you could stuff between fresh-baked buns. Serving burgers, hot dogs, fries and shakes!

### The Habit (4)

1297 Chess Dr  
Habitburger.com

The Habit Burger Grill is an American fast casual restaurant chain that specializes in charbroiled hamburgers. The company also purveys other typical fast-casual fare.

### International House of Pancakes (2)

531 Foster City Blvd.  
www.ihop.com

IHOP focus is on breakfast foods such as pancakes, French toast, and omelettes, but it also offers a menu of lunch and dinner items.

### McDonald's (3)

Triton Dr.  
www.mcdonalds.com

McDonald's can provide a quick dine-in or drive-thru breakfast, lunch or dinner from its extensive menu.

### Panera Bread (4)

1297 Chess Dr  
www.panerabread.com

We believe that good food, food you can feel good about, can bring out the best in all of us. Food served in a warm, welcoming environment, by people who care. To us, that's good eating and that's why we're here.

### Taco Bell (3)

Triton Dr.  
www.tacobell.com

Taco Bell makes it easy to get an easy, inexpensive lunch or dinner on-the-go. Offering tacos, burritos, nachos and more, you can eat-in or drive-thru.

### Starbird (3)

Triton Dr.  
www.starbirdchicken.com

Exceptional fried chicken, cooked in non-GMO rice bran oil delivering a crispy, non greasy product. Goes perfectly on its own with house-made dipping sauces, in a sandwich, in a tortilla or over greens.

## Beverages, Dessert, Snacks

### Chatime (6)

Edgewater Place  
901-999 Edgewater Blvd

Chatime has delicious juices and smoothies, bubble tea, and coffees.

### Happy Lemon (11)

780 Alma Lane 170  
www.happy-lemon.com/en

Simply offering the yummiest drinks in the world!

### Jamba Juice (1)

1000 Metro Center Blvd.  
www.jambajuice.com

Jamba Juice is sunny year-round with delicious fruit juices, smoothies, snacks and more.

### MOO MOO YOGURT (6)

Edgewater Place  
969 Edgewater Blvd F

Delicious variety of frozen yogurt with your choice of toppings!

### Noah's New York Bagels (1)

1000 Metro Center Blvd.  
www.noahs.com

Noah's New York Bagels serves up not only bagels, but also sandwiches, snacks, coffee and espresso. Enjoy patio dining in our beautiful California sun.

### Penelope's Coffee and Tea (13)

3 Plaza View Lane Ste N

Fresh, high-quality coffee & tea in a relaxing environment with WiFi and power outlets.

### Quickly (6)

Edgewater Place  
969 Edgewater Blvd K  
www.quicklyusa.com/fostercityca

Quickly offer drinks, snacks and meals in all shapes and sizes. From traditional bubble milk tea to crispy popcorn chicken. Quickly provides many meal and treat time choices.

### Starbucks (1, 7)

1000 Metro Center Blvd.  
Marlin Cove Center  
1060-1098 Foster City Blvd.  
www.starbucks.com

Starbucks is well known for its excellent coffee, handcrafted beverages, fresh pastries, sandwiches, and more in a warm gathering environment.

### Sweethoney Dessert (7)

1066 Foster City Blvd  
www.sweethoneydessert.com

Well known as one of the finest and most inspired Hong Kong desserts in Asia..

### T Pumps (5)

Metro Center  
985 E Hillsdale Blvd  
www.pumps.com

Tpumps is a west coast based tea store that specializes in custom bubble tea drinks. Bubble tea is a freshly prepared taiwanese iced tea drink with tapioca pearls.

## Chinese

### 5 Joy Restaurant (9)

Beach Park Plaza  
1455-1499 Beach Park Blvd.  
www.5joyrestaurant.com

5 Joy Restaurant offers authentic Chinese cuisine with Taiwanese influences.

### Cooking Papa (6)

Edgewater Place  
901-999 Edgewater Blvd  
www.mycookingpapa.com

Cooking Papa offers Cantonese style Chinese cuisine – bbq, noodles, clay pot, soup and more!

### Dim Sum USA (9)

Beach Park Plaza  
1459 Beach Park Blvd  
www.dimsumusa.com

Dim sum takeout, dumpling delivery, and catering. Artisan homemade dumplings.

### Fashion Wok Restaurant (6)

Edgewater Place  
929 Edgewater Blvd A

One-of-a-kind lakeside Chinese dining experience. Authentic and trendy individual hot pots. Generous portions at great prices.

### Rickshaw Corner (6)

Edgewater Place  
901-999 Edgewater Blvd

Rickshaw Corner offers large portions of Chinese take-out for reasonable prices. Take a few steps and eat your meal on the waterfront deck.



## Japanese

### Akisu Sushi Bar and Grill (9)

Beach Park Plaza  
1457 Beach Park Blvd

Fresh Japanese Cuisine by Beach Park Plaza inside the friendly neighborhood of Foster City. We offer Japanese contemporary style of sushi, sashimi, entrees and grill with our daily fresh ingredients!

### Dozo Izakaya (12)

3 Plaza View Lane, Suite O  
www.dozo-izakaya.com

Simple, easygoing eatery featuring classic rolls, sashimi & cooked Japanese meals plus sake.

### Kenta Ramen (9)

Beach Park Plaza  
1495 Beach Park Blvd  
www.kentaramen.com

Established in 2013, but have been in ramen business since 1996 in San Francisco downtown district.

### Kobe Japanese (6)

Edgewater Place  
901-999 Edgewater Blvd  
www.kobefostercity.com

Kobe Japanese Cuisine and Bar is noted for its traditional and exotic Japanese food, including superb Sushi, and elegant and trendy décor.

### Tokyo Village (10)

Crowne Plaza Hotel  
1221 Chess Dr.  
www.1221tokyovillage.com

Tokyo Village offers a complete sushi bar and full Japanese menu in the beautiful Crowne Plaza Hotel.

## Italian

### Bellini Bistro (9)

Beach Park Plaza  
1465 Beach Park Blvd

Serving a wide variety of traditional Italian dishes at reasonable prices with a freshness you can see and taste.

## Indian

### Pastries N Chaat (11)

1100 Foster Square Ln #150  
www.pastriesnchaat.com

Nostalgic foods from the streets of India. Casual, cozy, and trendy ambiance to satisfy with pastries, chaat, and other Indian delicacies.





## Korean

### SOON'S TOFU & KOREAN BBQ (7)

Marlin Cove Center  
1060-1098 Foster City Blvd.  
[www.soonstofu.com](http://www.soonstofu.com)

Soon's Tofu and Korean BBQ, offers everyday Korean soul food: tofu soups and tangy Korean barbecue known the world over.

### THE WAREHOUSE BUFFET (6)

Edgewater Place  
979 Edgewater Blvd  
[www.wbuffet](http://www.wbuffet)

Warehouse Buffet offers an unforgettable experience with a vast assortment of fresh meats, seafood, vegetables, and hotpot. Welcome to the comfort of a family-oriented restaurant along with a scenic overview of the Foster City lagoon.

## Mediterranean

### FALAFEL TAZAH (11)

780 Alma Lane 160  
[www.falafeltazah.com](http://www.falafeltazah.com)

Bringing the flavors and the spices of the Middle East and using ONLY the freshest Halal meat and chicken. Fresh food made fast!

### OLIVES (6)

Edgewater Place  
901-999 Edgewater Blvd  
[www.olivescuisine.com](http://www.olivescuisine.com)

Olives invites you to enjoy authentic Greek and Mediterranean cuisine for lunch or dinner while enjoying the spectacular water view.

### WATERFRONT PIZZA (6)

Edgewater Place  
901-999 Edgewater Blvd  
[www.waterfrontpizza.com](http://www.waterfrontpizza.com)

Waterfront Pizza fuses Mediterranean cuisine and classic pizza dishes. Inside or patio dining on the waterfront are offered.

## Pizza

### MOD PIZZA (4)

1297 Chess Drive B  
[www.modpizza.com/locations/foster-city](http://www.modpizza.com/locations/foster-city)

House-made crusts, signature sauces and dozens of fresh toppings. Choose your favorite flavor combination and it will be ready in under 5 hot minutes.

### ROUND TABLE (7)

Marlin Cove Center  
1060-1098 Foster City Blvd.  
[www.roundtablepizza.com](http://www.roundtablepizza.com)

Round Table has unique, innovative pizza combinations and also offers appetizers and salad bars to complete the feast. Dine in, carry out or deliver.

## Sandwiches/Deli

### CAFÉ SAVINI (5)

Metro Center  
950 Tower Ln 100  
[www.cafesavini.com](http://www.cafesavini.com)

Featuring many international dishes and salads, Café Savini has a "Grab-and-Go" Cooler, containing ready-made salads and a wide variety of drinks and juices, and a full espresso bar brewing San Francisco's Finest Organic coffee.

### PLAZA GOURMET (6)

Edgewater Place  
901-999 Edgewater Blvd

Plaza Gourmet delicatessen makes specialty sandwiches and has several side salad options. The deli also offers a range of Italian goods.



### SANDWICH MONKEY (12)

Three Plaza View Lane Suite V  
[www.thesandwichmonkey.com](http://www.thesandwichmonkey.com)

Amazingly fresh takes on classic sandwiches and salads, along with unique combinations.

### SPECIALTY'S CAFÉ AND BAKERY (5)

Parkside Towers  
1031 E Hillsdale Blvd  
[www.specialtys.com](http://www.specialtys.com)

Specialty's Cafe & Bakery serves healthy, made-from-scratch breakfasts, lunches and baked goods. Business catering is also available.

## Southern

### PICCADILLY (4)

1169-A Chess Dr.  
[www.piccadillycatering.com](http://www.piccadillycatering.com)

Piccadilly Catering offers a delicious weekday lunch. Choose catfish, jambalaya, fried chicken & waffles, our famous SoulRitto (SoulFood burrito) and more!

## Thai

### SWEET BASIL (9)

Beach Park Plaza  
1455-1499 Beach Park Blvd.  
[www.sweetbasilfoster.com](http://www.sweetbasilfoster.com)

Sweet Basil has received recognition for Thai dishes that are both visually appealing and delicious. This restaurant is always bustling!

## Restaurant Locations

- 1000 Metro Center Blvd.**  
Jamba Juice  
Noah's New York Bagels  
Starbucks  
Wonderful 2
- 531 Foster City Blvd.**  
IHOP
- Triton Drive**  
Carl's Jr.  
McDonalds  
Starbird  
Taco Bell
- Chess Drive**  
The Habit Burger Grill  
Mod Pizza  
Panera Bread  
Piccadilly  
Tokyo Village
- Metro Center  
921-973 E Hillsdale Blvd.**  
Café Savini  
Five Guys Burgers and Fries  
Specialty's Café & Bakery  
Tpumps
- Edgewater Place  
901-999 Edgewater Blvd.**  
Chatime  
Cooking Papa  
Fashion Wok Restaurant  
Kobe Japanese  
Moo Moo Yogurt  
Olives Cuisine  
Plaza Gourmet  
Quickly  
Rickshaw Corner  
The Warehouse Buffet  
Waterfront Pizza
- Marlin Cove Center  
1060-1098 Foster City Blvd.**  
Round Table  
Soon's Tofu and Korean BBQ  
Sweethoney Dessert  
Tai Wu



- Beach Park Plaza  
1455-1499 Beach Park Blvd.**  
5 Joy Restaurant  
Akiyu Sushi Bar and Grill  
Bellini Bistro  
Dim Sum USA  
Kenta Ramen  
Sweet Basil Thai Cuisine
- Foster Square**  
Pastries N Chaat  
Falafel Tazah  
Happy Lemon  
Poppies Bistro  
Starbucks
- The Plaza**  
Dozo Izakaya  
Penelope's Coffee and Tea  
Sandwich Monkey
- Crowne Plaza Hotel  
1221 Chess Dr.**  
Cafe Florian  
Clubhouse Bistro  
Tokyo Village





# Member Directory

Where to find excellent local resources  
Chairman's Circle Members † Gold Circle Members \*

## ACCOUNTING AND TAX SERVICES

### Blake & Associates, CPA

1687 Laurel St  
San Carlos ..... (650)573-5100  
[www.hjbcpa.com](http://www.hjbcpa.com)

### Caplan & Wong CPAs, LLP

563 Pilgrim Drive, Ste. D  
Foster City ..... (650) 573-5246  
[www.robertcaplancpa.com](http://www.robertcaplancpa.com)

### Goldberg Gluck & Brusilovsky LLP

950 Tower Lane, Ste. 110  
Foster City ..... (650) 349-5678

### Reddell, Cristina E., EA

1111 Triton Dr. Ste. 102  
Foster City ..... (650) 349-9333  
[www.reddelltax.com](http://www.reddelltax.com)

### Rossi & Company Accountancy Corporation \*

1098 Foster City Blvd., Ste 303  
Foster City ..... (650) 341-7758

### Sal Censoprano, CPA \*

957 Laguna Circle  
Foster City ..... (650) 349-8982  
[www.censoprano.com](http://www.censoprano.com)

## ADVERTISING/MARKETING

### Biz Bulwark

1900 S Norfolk St, Suite 350  
San Mateo ..... (650) 339-2684  
<https://bizbulwark.com>

### Hendricks Drive

[www.hendricksdrive.com](http://www.hendricksdrive.com)..... (702) 374-2849

### SalesX

3031 Tisch Way 110 Plaza West  
San Jose..... (877) 998-7411  
[salesx.com](http://salesx.com)

## AIR CARGO FORWARDING

### Portlink USA Inc.

1169 Chess Drive, Ste. N  
Foster City ..... (650) 578-9281  
[www.portlinkusa.com](http://www.portlinkusa.com)

## AMBULANCE SERVICE

### Bayshore Ambulance

PO Box 4622  
Foster City ..... (650) 525-3855  
[www.bayshoreambulance.com](http://www.bayshoreambulance.com)

## APARTMENTS

### Beach Cove Apartments

703 Catamaran Street  
Foster City ..... (650) 349-1700  
[www.beachcoveapts.com](http://www.beachcoveapts.com)

### Eaves Foster City

700 Marlin Avenue  
Foster City ..... (650) 341-8287  
[www.avaloncommunities.com](http://www.avaloncommunities.com)



## Open for Exploration™



### Discover What Treasures Await You at the Library

- Check out new and bestselling books, DVDs, CDs, and more
- Download or stream books, movies, music, and magazines all from the comfort of your home
- Connect with our technology and literacy services, and enjoy small business development programs

For more information, visit [smcl.org](http://smcl.org)



## MEMBER DIRECTORY

# The Law Offices of Mark C. Watson

- Certified Family Law Specialists by the California Bar Association
- Certified International Law Specialists by Golden Gate University School of Law
- Co-Chairman of the San Mateo County Bar Association - Property Law Committee



We are Proud Sponsors of



- Former Scout Master Troop 47 Foster City
- Bowditch Middle School PTA Board 2011-12
- Former Foster City AYSO Coach & Sponsor
- Former Foster City Little League Coach
- Former President - St. Andrew's Lutheran Church
- Foster City Rotary President 2019 - 2020
- Member Foster City Audit Committee

533 Airport Blvd., Suite 100 Burlingame CA 94010  
650-692-4001 [www.markwatson.com](http://www.markwatson.com)

### Foster's Landing Apartments

700 Bounty Dr  
Foster City ..... (650) 574-3060  
[www.brefosterslanding.com](http://www.brefosterslanding.com)

### Kula Kai Apartments

808 Comet Drive  
Foster City ..... (650) 345-5406  
[www.kulakaiapps.com](http://www.kulakaiapps.com)

### One Hundred Grand, CV Triton LLC \*

10877 Wilshire Blvd, 12th Floor  
Los Angeles ..... (650) 350-1099  
[www.100grandapts.com](http://www.100grandapts.com)

### Sand Cove Apartments

777 Shell Blvd.  
Foster City ..... (650) 341-2880  
[www.sandcoveapts.com](http://www.sandcoveapts.com)

### Shadow Cove Apartments

1055 Foster City Blvd.  
Foster City ..... (650) 341-1950  
[www.shadowcoveapts.com](http://www.shadowcoveapts.com)

### The Plaza

1 Plaza View Lane  
Foster City ..... (650) 349-9999  
[www.plazafostercity.com](http://www.plazafostercity.com)

## ARCHITECTS & ARCHITECTURAL PLANNERS

### Gumbinger Avram Architects, Inc.

318 South B Street, Suite 2  
San Mateo ..... (650) 579-0995  
[www.gumbingeravram.com](http://www.gumbingeravram.com)

## ARTISTS & ART GALLERY

### Luz Hartley

969 H -1 Edgewater Blvd  
Foster City ..... (650) 356-0514  
[www.luzfineart.com](http://www.luzfineart.com)

### Pamela Walsh Art Advisory & Gallery

540 Ramona St  
Palo Alto..... (415) 420-5122  
[www.pamelawalshartadvisory.com](http://www.pamelawalshartadvisory.com)

# MEMBER DIRECTORY

## ATTORNEYS

### Bullivant/Houser/Bailey PC - Ron Richman

235 Pine St., Ste 1500  
San Francisco ..... (415) 352-2700  
[www.bullivant.com](http://www.bullivant.com)

### Laughlin Legal, PC

950 Tower Lane, Suite 1225  
Foster City ..... (650) 343-3486  
[www.laughlinlegal.com](http://www.laughlinlegal.com)

### Law Offices of Cathy E. Rincon

1291 E. Hillsdale Blvd., Ste. 302  
Foster City ..... (650) 571-1373

### Law Offices of Mark C. Watson \*

1633 Bayshore Highway, Ste. 250  
Burlingame ..... (650) 692-4001  
[www.markwaston.com](http://www.markwaston.com)

### Law Offices of Tom Fier

675 Mariners Island Blvd., Ste. 106  
San Mateo ..... (650) 572-1900  
[www.tomfier.com](http://www.tomfier.com)

### Law Offices of Wayne A. McFadden

1200 Dore Avenue, Ste. 201  
San Mateo ..... (650) 340-7100  
[www.lawwam.com](http://www.lawwam.com)

### Manatt Phelps & Phillips LLP

1001 Page Mill Road, Building 2  
Palo Alto ..... (650) 812-1300  
[www.manatt.com](http://www.manatt.com)

## AUTOMOBILE RENTALS

### Budget Car & Truck Rental

1133 Chess Drive  
Foster City ..... (650) 287-2680  
[www.budget.com](http://www.budget.com)

## BANKS & BANKING ASSOCIATIONS

### Beacon Business Bank

1700 S El Camino Real Suite 108  
San Mateo ..... (650) 697-8855  
[www.beaconbusinessbank.com](http://www.beaconbusinessbank.com)

### Boston Private Bank & Trust Co. \*

160 Bovet Road  
San Mateo ..... (650) 378-3700  
[www.bostonprivate.com](http://www.bostonprivate.com)

### US Bank

999-F Edgewater Blvd  
Foster City ..... (650) 574-4034  
[www.usbank.com](http://www.usbank.com)

## BEAUTY SALONS

### Beautyshilp / My Fair Lady Beauty Salon

100 Grand Lane, Suite D  
Foster City ..... (650) 372-5130

## BUSINESS CONSULTANTS

### Leadership San Mateo/Foster City

1700 S El Camino Real Suite 108  
San Mateo ..... (650) 401-2444  
[www.leadershipprogram.net](http://www.leadershipprogram.net)

### Paychex

Alex Alfadel, Small Business Consultant  
224 Airport Pkwy, Suite 620  
San Jose ..... (650) 260-4828  
[www.paychex.com](http://www.paychex.com)

## SCIENCE FROM SCIENTISTS

STEM Enrichment for Students, ages 8-13

This year Science from Scientists will reach over 10,000 students in San Mateo County, Boston and Minneapolis, with our unique

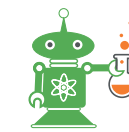
### STEM Enrichment Learning Programs

- Real STEM Professional Instructors
- Quality Materials and Supplies
- Interactive Learning
- Vacation Programs
- During and Outside of School Programs
- Teacher Professional Development



### OUR MISSION

To inspire our community's youth to pursue STEM for education, career and life choices



**SCIENCE**  
FROM SCIENTISTS

To learn more about our motivational STEM Learning Programs targeting local youth, contact us!

533 Airport Blvd, Suite 135, Burlingame, CA 94010  
650/483-6015

[info@sciencefromscientists.org](mailto:info@sciencefromscientists.org)  
[www.sciencefromscientists.org](http://www.sciencefromscientists.org)



manatt

**Invested in  
creating  
a better  
tomorrow.**

Manatt proudly supports the  
community of  
**Foster City.**

Manatt, Phelps & Phillips, LLP [manatt.com](http://manatt.com)

## Law Office of Cathy E. Rincon

[www.cathyrincon.com](http://www.cathyrincon.com)

Offering Estate Planning Services,  
Including  
Trusts and Wills.



1291 East Hillsdale Blvd, Suite 203  
Foster City, CA 94404-1297  
[cathy@cathyrincon.com](mailto:cathy@cathyrincon.com)  
**Phone: 650-571-1373**

When you're in need of a dependable  
Security Guard Service, don't hesitate.  
Contact Defense Logistics Specialist Corp today.



Uniformed Security  
Event Security Service  
Video Surveillance

533 Airport Blvd, Ste 400 | Burlingame CA  
(888) 908-2821 [info@discorp.us](mailto:info@discorp.us)



We provide experiences and opportunities to the 12,000 preschool through 8th grade students of the San Mateo-Foster City School District in **science, technology, engineering, math, art, music, literacy, athletics & wellness.**

**Be an agent  
of change!**



- **Provide** all students with exceptional educational opportunities & experiences.
  - **Create** a well rounded, well prepared future workforce while supporting our current employee's families.
  - **Support** economic development through strong schools.
- Find out more at [smfcedfund.org](http://smfcedfund.org)



SMFC Education Foundation is a 501(c)(3) non-profit organization and donations are tax deductible. Tax id: 94-3110731



**CHILDREN'S ACTIVITIES/SPORTS**

**American Youth Soccer Organization**

PO Box 4270  
Foster City ..... (650) 349-5425  
[www.aysofc.org](http://www.aysofc.org)

**Foster City Little League**

PO Box 4011  
Foster City ..... (650) 533-9383  
[www.fcll.org](http://www.fcll.org)

**CHIROPRACTORS**

**Foster City Chiropractic Center**

1098 Foster City Blvd., Ste. 203  
Foster City ..... (650) 573-9371

**i Choose Wellness Center**

2001 Winward Way, Ste. 102  
San Mateo ..... (650) 212-1000  
[www.drchriscogin.com](http://www.drchriscogin.com)

**Integral Chiropractic**

951-B Edgewater Boulevard ..... (650) 212-1414  
[www.drwilsondc.com](http://www.drwilsondc.com)

**CHURCHES/HOUSES OF WORSHIP**

**Central Peninsula Church**

1005 Shell Blvd.  
Foster City ..... (650) 349-1132  
[www.cpcweb.org](http://www.cpcweb.org)

**Congregation Emanu-El**

2 Lake St  
San Francisco ..... (415) 750-7545  
[www.emanuelsf.org](http://www.emanuelsf.org)

**Grace Gospel Christian Church**

675 Mariners Isl. Blvd., #105  
San Mateo ..... (650) 212-5858  
[www.gracegospel-rca.org](http://www.gracegospel-rca.org)

**Island United Church of Foster City**

1130 Balclutha Drive  
Foster City ..... (650) 349-3544  
[www.iucfc.org](http://www.iucfc.org)

**St. Ambrose Episcopal Church**

900 Edgewater Blvd.  
Foster City ..... (650) 574-1369  
[www.stambrosefostercity.org](http://www.stambrosefostercity.org)

**St. Luke Catholic Church**

1111 Beach Park Blvd.  
Foster City ..... (650) 345-6660  
[www.stlukefc.org](http://www.stlukefc.org)

**CONTRACTORS - GENERAL**

**Universal Developing, Inc.**

513 Mountain View Ave  
Belmont ..... (650) 591-7667  
[www.universaldeveloping.com](http://www.universaldeveloping.com)

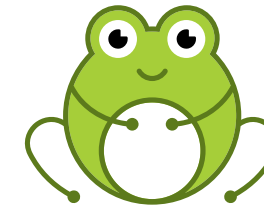
**CREDIT UNIONS**

**San Mateo Credit Union**

PO Box 910  
Redwood City ..... (650) 363-1725  
[www.smcu.org](http://www.smcu.org)

WHERE GENERATIONS OF

happy healthy teeth begin!



**HAPPY HEALTHY TEETH**  
pediatric dentistry & orthodontics



VISIT THE PAD

1291 East Hillsdale Blvd., Suite 100  
Foster City, CA 94404

HappyHealthyTeeth.Com

650.574.4447



Jonathon Everett Lee, DDS, Inc.

Brian D. Lee, DDS, MSD, Inc.

Christian P. Yee, DDS

**DENTIST/ORTHODONTIST**

**Bonahoom, Ghafourpour, DDS**

1291 E. Hillsdale Blvd., Ste. 110  
Foster City ..... (650) 574-3611

**Family Dental\***

581 Foster City Blvd.  
Foster City ..... (650) 286-9999  
[www.familydentalfostercity.com](http://www.familydentalfostercity.com)

**Happy Healthy Teeth**

1291 East Hillsdale Blvd, Suite 100  
Foster City ..... (650) 574-4447  
[www.HappyHealthyTeeth.com](http://www.HappyHealthyTeeth.com)

**Henry, Stephen R. DDS\***

1098 Foster City Blvd., Ste. 101  
Foster City ..... (650) 341-5656  
[www.drhenrydental.com](http://www.drhenrydental.com)

**Jacklyn Kurth Orthodontics**

1291 E. Hillsdale Blvd., Ste. 200  
Foster City ..... (650) 525-9440  
[www.jacklynkurthorthodontics.com](http://www.jacklynkurthorthodontics.com)

**Kinsel, Richard P. DDS**

1291 E. Hillsdale Blvd., Ste. 143  
Foster City ..... (650) 573-8262  
[www.pdfesthetics.com](http://www.pdfesthetics.com)

**Yang, Brian Y., DDS, MD**

1261 E. Hillsdale Blvd., Ste. 1  
Foster City ..... (650) 525-1033  
[www.byangddsmd.com](http://www.byangddsmd.com)

**EDUCATION/TUTORING**

**Mathnasium**

100 Grand Lane, Suite C  
Foster City ..... (650) 242-7650  
[www.mathnasium.com/fostercity](http://www.mathnasium.com/fostercity)

**San Mateo-Foster City Education Foundation**

1170 Chess Drive  
Foster City ..... (650) 312-7234  
[www.forkidsedfund.org](http://www.forkidsedfund.org)

**LEGAL DOCUMENTS PLUS**

**Non-Attorney Document Preparation:**

Divorce, Living Trust, Corporations, Probate,  
Change of Personal Name, Fictitious Business Name,  
Deed Title Transfers, Notary Public, + More

**Jeri Blatt, LDA #11** Registered & Bonded  
650-574-2087  
[legaldocumentsplus.com](http://legaldocumentsplus.com)

"I am not an attorney, I can only provide self help  
services at your specific direction."

**FALAFEL TAZAH**

Hours: M-F 11am - 8pm | Sat 11am - 7pm | Closed Sun  
780 Alma Lane #160 | Foster City | (650) 627-4169  
[www.falafeltazah.com](http://www.falafeltazah.com)

**UNIVERSAL DEVELOPING**  
INCORPORATED  
General Contractors  
CA Lic. # 622858

Where Good Ideas Become Quality Custom Homes  
Additions & Remodel Specialists Since 1988

513 Mountain View Ave.  
Belmont, CA 94002  
Tel: (650) 591-7667

**EDUCATION/TUTORING**

**Science from Scientists**

2205 Palm Ave  
San Mateo ..... (650) 280-2009  
[www.sciencefromscientists.org](http://www.sciencefromscientists.org)

**The Tutoring Center**

939-L Edgewater Blvd.  
Foster City ..... (650) 638-9163  
[www.tutoringcenter.com](http://www.tutoringcenter.com)

**ELECTRIC BOAT SALES**

**Edgewater Marine LLC**

715 San Miguel Lane  
Foster City ..... (650) 703-3572  
[www.edgewatermarinellc.com](http://www.edgewatermarinellc.com)

As a non-profit organization, we are committed to helping each other live vibrant and full lives in our homes and community as we age. We provide mobility, easy access to services, social connections, practical assistance, and educational opportunities. **Come join us and participate in the many wonderful services we offer!**



650.378.8541  
Community Center  
1000 E Hillsdale Blvd  
Foster City  
[FosterCityVillage.org](http://FosterCityVillage.org)



**FINANCE & FINANCIAL ADVISORS**

**Chen Financial Planning**

1070 - 6th Avenue, Ste. 104  
Belmont ..... (650) 631-0600

**SGC Financial & Insurance Services**

1810 Gateway Dr. Suite 100  
San Mateo ..... (650) 573-8524  
[www.sgc-financial.com](http://www.sgc-financial.com)

**Visa Inc †**

900 Metro Center  
Foster City ..... (650) 432-3200  
[www.corporate.visa.com](http://www.corporate.visa.com)

**FITNESS & HEALTH CENTERS**

**California Windsurfing \***

650 Shell Blvd  
Foster City ..... (650) 594-0335  
[www.californiawindsurfing.com](http://www.californiawindsurfing.com)

**Orangetheory Fitness \***

983 East Hillsdale Blvd  
Foster City ..... (650) 293-0929  
[www.foster-city.orangetheoryfitness.com](http://www.foster-city.orangetheoryfitness.com)

**Peninsula Jewish Community Center**

800 Foster City Blvd.  
Foster City ..... (650) 212-7522  
[www.pjcc.org](http://www.pjcc.org)

**Xtrim Bollywood**

1477 Beach Park Blvd  
Foster City ..... (650) 892-6653  
[www.fusionbeatz.com](http://www.fusionbeatz.com)

**FOOD PRODUCTS, SUPPLIES & BROKERS**

**Kona Ice**

Foster City ..... (650) 431-6281  
[www.kona-ice.com](http://www.kona-ice.com)

**FUNERAL HOMES & CEMETERIES**

**Crosby N. Gray & Company \***

Two Park Road  
Burlingame ..... (650) 342-6617  
[www.crosby-ngray.com](http://www.crosby-ngray.com)

**GOVERNMENT**

**Congresswoman Jackie Speier**

155 Bovet Road, Suite 780  
San Mateo ..... (650) 342-0300  
[www.speier.house.gov](http://www.speier.house.gov)

**County of San Mateo-Supervisor Carole Groom**

400 County Center  
Redwood City ..... (650) 363-4568

**United States Army**

2850 S El Camino Real  
San Mateo ..... (909) 992-2977  
[www.goarmy.com](http://www.goarmy.com)

**GRAPHIC DESIGN**

**Adduci Studios, Inc**

Martinez ..... (925) 372-7009  
[www.adducistudios.com](http://www.adducistudios.com)

All of San Mateo County behind  
all of our kids.  
[www.thebiglift.org](http://www.thebiglift.org)

Growing and improving the supply of child care and  
preschool facilities in San Mateo County.  
[www.buildupsmc.org](http://www.buildupsmc.org)

**ENERGY**

**Peninsula Clean Energy**

2075 Woodside Road  
Redwood City ..... (650) 257-2462  
[www.peninsulacleanenergy.com](http://www.peninsulacleanenergy.com)

**ENGINEERS-CIVIL, ENVIRONMENTAL**

**GeoForensics, Inc.**

561 Pilgrim Dr., Ste. D  
Foster City ..... (650) 349-3369

**FARMERS MARKETS**

**West Coast Farmers Market Association**

209 Yarborough Lane  
Redwood City ..... (650) 290-3549  
[www.westcoastfarmersmarket.org](http://www.westcoastfarmersmarket.org)

**Adducistudios**  
show some moxie.

925.372.7009  
[info@adducistudios.com](mailto:info@adducistudios.com)

branding illustration design web



**\*Free Parking \* Free Wifi \* Free Shuttle**

**\*Meeting Space \*Guest Room \*Out Door Pool \* Fitness Center**

**2000 Bridgepointe Circle | San Mateo, CA 94404**

**www.sanmateo.hgi.com | Tel: (650)522-9000**

**HEALTH CARE SERVICES**

**Brookside Skilled Nursing Hospital**

2620 Flores Street  
San Mateo ..... (650) 349-2161  
[www.brooksideskillednursinghospital.com](http://www.brooksideskillednursinghospital.com)

**Dr Liz Lyster MD \***

1289 E. Hillsdale Blvd Ste #5  
Foster City ..... (650) 515-4509  
[www.drLizMD.com](http://www.drLizMD.com)

**Foster City Pediatric Medical Group**

1295 E. Hillsdale Blvd.  
Foster City ..... (650) 574-2774  
[www.fostercitypediatrics.com](http://www.fostercitypediatrics.com)

**Gentle Birth**

Mountain View ..... (650) 450-2770  
[www.GentleBirth.com](http://www.GentleBirth.com)

**Mills-Peninsula Health Services**

2350 El Camino Real  
Mountain View ..... (650) 934-6970  
[www.mills-peninsula.org](http://www.mills-peninsula.org)

**VITAS Innovative Hospice Care**

670 N McCarthy Blvd, Suite 220  
Milpitas ..... (650) 350-1835  
[www.vitas.com](http://www.vitas.com)

**HOTELS/MOTELS**

**Crowne Plaza Hotel Foster City †**

1221 Chess Drive  
Foster City ..... (650) 570-5700  
[www.eventscp.com](http://www.eventscp.com)

**San Mateo Hilton Garden Inn \***

2000 Bridgepointe Circle  
San Mateo ..... (650) 522-9000  
[www.sanmateo.stayhgi.com](http://www.sanmateo.stayhgi.com)

**San Mateo-Foster City Courtyard Marriott**

550 Shell Blvd  
Foster City ..... (650) 377-0600  
[www.marriott.com/sfofc](http://www.marriott.com/sfofc)

**TownePlace Suites †**

1299 Chess Dr  
Foster City ..... (650) 539-4600  
[www.marriott.com/sfomt](http://www.marriott.com/sfomt)

**IMPORT/EXPORT/WHOLESALE**

**Chen International, Inc. \***

1160 Chess Drive, Ste. 7  
Foster City ..... (650) 578-9000  
[www.kasaumbrellas.com](http://www.kasaumbrellas.com)

**INFORMATION TECHNOLOGY**

**IBM Corporation †**

1001 E. Hillsdale Blvd.  
Foster City ..... (650) 645-8338  
[www.IBM.com](http://www.IBM.com)

**Rosenthal Consulting Group**

24 East Court Lane  
Foster City ..... (650) 464-1221

**Valley Yellow Pages**

1850 North Gateway Blvd.  
Fresno ..... (559) 251-8888  
[www.MyYP.com](http://www.MyYP.com)

**Advanced Systems For Power Engineering**

49 N San Mateo Dr  
San Mateo ..... (650) 347-3997  
[www.aspeninc.com](http://www.aspeninc.com)

**INSURANCE**

**ABD Insurance and Financial Services**

3 Waters Park Drive #100  
San Mateo ..... (650) 488-8565  
[www.theabdteam.com](http://www.theabdteam.com)

**Farmers Insurance - Joe Angelini**

2555 Flores St, Suite 150  
San Mateo ..... (650) 571-1171  
[www.agents.farmers.com](http://www.agents.farmers.com)

**Jennifer Minkey Selvitella - State Farm Agent \***

3 Plaza View Lane Suite J  
Foster City ..... (650) 377-0500  
[www.jenniferselvitella.net](http://www.jenniferselvitella.net)



**A good neighbor has your back.**

Life's a combination of good days and bad. I have your back for both. And who has my back? The company more people have trusted for 90 years.

**Jennifer Selvitella, Agent**

Insurance Lic# 0C89496  
3 Plaza View Lane  
Foster City, CA 94404

**650-377-0500**

**CALL ME TODAY**



State Farm Bloomington, IL 1606040

## KITCHEN/BATH CABINETRY/COUNTERTOPS

### Gilman Kitchens & Baths \*

2612 S El Camino Real  
San Mateo ..... (650) 340-2890  
[www.GKandB.com](http://www.GKandB.com)

## LEGAL DOCUMENTS PREPARATION

### Legal Documents Plus

PO Box 4490  
Foster City ..... (650) 574-2087  
[www.legaldocumentsplus.com](http://www.legaldocumentsplus.com)

## LIFE SCIENCE

### Gilead Sciences †

333 Lakeside Drive  
Foster City ..... (650) 574-3000  
[www.gilead.com](http://www.gilead.com)

### Illumina, Inc.


5200 Illumina Way  
San Diego ..... (858) 882-2022  
[www.illumina.com](http://www.illumina.com)

## FIGHTING POVERTY. LIFTING LIVES.

For the security guard sleeping in his car; or the teacher whose emergency room visit put her behind on rent; or the mom working three jobs to make sure her kids have food and clothes. For all who are struggling to make ends meet, Samaritan House is here to help.

Want to fight poverty and lift lives? Get involved.



  
**SAMARITAN HOUSE**  
650-347-3648  
[samaritanca.org](http://samaritanca.org)  
4031 Pacific Blvd  
San Mateo, CA 94403

## MARINE & BOAT SALES/SERVICE/RENTALS

### Edgewater Marine LLC

715 San Miguel Lane  
Foster City ..... (650) 766-9155  
[www.edgewatermarinellc.com](http://www.edgewatermarinellc.com)

## MARTIAL ARTS

### United Studios of Self Defense

1086 Foster City Blvd.  
Foster City ..... (650) 577-9234  
[www.ussdfostercity.com](http://www.ussdfostercity.com)

## MASSAGE

### Kome Gnu Wellness

1261 E Hillsdale Blvd Suite 9B  
Foster City ..... (908) 405-2863  
[www.komegnu.com](http://www.komegnu.com)

## NEWSPAPERS

### Foster City Islander \*

969 G Edgewater Blvd Suite 777  
Foster City ..... (650) 574-5952

## OPTOMETRISTS, OPHTHALMOLOGY

### VRC West / PRA Health Sciences

950 Tower Lane, Suite 1550  
Foster City ..... (650) 356-2899  
[www.188VisionOk.com](http://www.188VisionOk.com)

## ORGANIZATIONS/ASSOCIATIONS

### Better Business Bureau

1000 Broadway, Ste. 625  
Oakland ..... (866) 411-2221  
[www.bbb.org](http://www.bbb.org)

### Foster City Lions Club

PO Box 4005  
Foster City ..... (650) 571-8783  
[www.fostercitylions.com](http://www.fostercitylions.com)

### Foster City Mens Club

Foster City ..... (650) 906-3570  
[www.FosterCityMensClub.com](http://www.FosterCityMensClub.com)

### Foster City Parents' Club

650 Shell Blvd.  
Foster City  
[www.fostercityParentsClub.org](http://www.fostercityParentsClub.org)

### Foster City Police Officers Association

1030 E. Hillsdale  
Foster City ..... (650) 286-3300

### Friends of the Foster City Library

1000 E. Hillsdale Blvd.  
Foster City ..... (650) 574-4842

### Peninsula Health Care District

1600 Trousdale Drive, Ste. 1210  
Burlingame ..... (650) 697-6900  
[www.peninsulahealthcaredistrict.org](http://www.peninsulahealthcaredistrict.org)

### Peninsula Special Interest Lions Club

151 Flying Cloud Isle  
Foster City ..... (415) 378-6789  
[www.PSILCsymposium.org](http://www.PSILCsymposium.org)

### Rotary Club of Foster City

PO Box 8111  
Foster City ..... (650) 637-1014  
[www.fostercityrotary.org](http://www.fostercityrotary.org)

### Samaritan House-Administrative Office

4031 Pacific Blvd.  
San Mateo ..... (650) 341-4081  
[www.SamaritanHouse.com](http://www.SamaritanHouse.com)

### SAMCEDA (San Mateo County Economic Development Association)

1900 O'Farrell Street, Suite 380  
San Mateo ..... (650) 413-5600  
[www.samceda.org](http://www.samceda.org)

### San Mateo County Expo & Fair Association

2495 S Delaware Street  
San Mateo ..... (650) 574-3247  
[www.sanmateoexpo.org](http://www.sanmateoexpo.org)

### San Mateo County/Silicon Valley Convention & Visitors Bureau

111 Anza Blvd., Ste. 410  
Burlingame ..... (650) 348-7600  
[www.smccvb.com](http://www.smccvb.com)

### San Mateo County Library System

125 Lessingia Ct  
San Mateo  
[www.smcl.org](http://www.smcl.org)

### Shelter Network

181 Constitution Drive  
Menlo Park ..... (650) 685-5880  
[www.shelternetwork.org](http://www.shelternetwork.org)

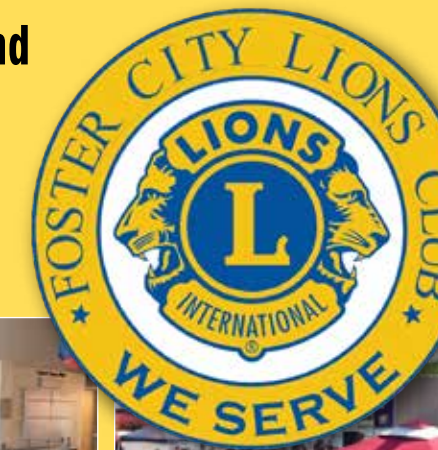
### Sustainable San Mateo County

177 Bovet Road, Suite 600  
San Mateo ..... (650) 638-2323  
[www.sustainableSanMateo.org](http://www.sustainableSanMateo.org)



## Working behind the scenes to build this city

Visit us at [fb.com/fostercitylions](http://fb.com/fostercitylions) to learn more about our club and to apply for membership.



## PAYROLL SERVICES

### Paychex

224 Airport Pkwy, Suite 620  
San Jose ..... (650) 260-4828  
[www.paychex.com](http://www.paychex.com)

## PHOTOGRAPHY

### Bill Poplawski

25 12th Ave  
San Mateo ..... (650) 525-4330

### CP Larson Photography

1098 Foster City Blvd., Ste 106 - PMB 715  
Foster City ..... (650) 794-9383  
[www.cplarson.com](http://www.cplarson.com)

### Dennis Hancock Photography

Foster City ..... (650) 851-2414  
[www.dennishancock.com](http://www.dennishancock.com)

### Shreeniclix Photography

711 Shell Blvd, #206  
Foster City ..... (510) 574-5906  
[www.shreeniclix.com](http://www.shreeniclix.com)





**FOSTER CITY BACKFLOW TESTING, REPAIR & INSTALLATION**

**JIMMY NESS**

Mobile # 650.556.5703  
24HR Pager # 510.889.4508  
nessbackflow@icloud.com

**PHYSICAL THERAPY**

**Brady Physical Therapy**

2001 Winward Way, Ste 101  
San Mateo ..... (650) 571-6800  
[www.bradyphysicaltherapy.com](http://www.bradyphysicaltherapy.com)

**PHYSICIANS & SURGEONS**

**Foster City Pediatric Medical Group**

1295 E. Hillsdale Blvd.  
Foster City ..... (650) 574-2774  
[www.fostercitypediatrics.com](http://www.fostercitypediatrics.com)

**Foster City Urgent Care**

1098 Foster City Blvd., Ste 201  
Foster City ..... (650) 570-2299

**PLUMBING**

**Ness BackFlow & Plumbing**

PO Box 4793  
Foster City ..... (650) 556-5703

**PRINTING**

**Fruitridge Printing**

3258 Stockton Blvd  
Sacramento ..... (916) 452-9213  
[www.fruitridge.com](http://www.fruitridge.com)

**REAL ESTATE - COMMERCIAL & RESIDENTIAL**

**Coldwell Banker - Julie Flouty Realtor**

1412 Chapin Ave Ste 200  
Burlingame ..... (650) 504-6900  
[www.julieflouty.com](http://www.julieflouty.com)

**Coldwell Banker Real Estate \***

181 Second Ave., Ste 100  
San Mateo ..... (650) 558-6800  
[www.camoves.com](http://www.camoves.com)

**Cronan Real Estate**

19 Park Rd, Suite C  
Burlingame ..... (650) 274-0259  
[www.cronanrealestate.com](http://www.cronanrealestate.com)

**Elite Properties - Susan Lindstrom**

329 Mullet Court  
Foster City ..... (650) 345-2850  
[www.susanlindstrom.com](http://www.susanlindstrom.com)

**Karl Chang Real Estate**

1430 Howard Ave  
Burlingame ..... (650) 477-0705  
[www.karlchang.com](http://www.karlchang.com)

**Keller Williams Peninsula Estates**

1430 Howard Ave  
Burlingame ..... (650) 455-1040  
[www.kwpeninsulaestates.com](http://www.kwpeninsulaestates.com)

**Liberty Realty - Patrick Sullivan \***

300 Sea Horse Court  
Foster City ..... (650) 274-8284  
[www.liberty-realty.com](http://www.liberty-realty.com)

**Meraki Real Estate - Rica Ruiz \***

950 Tower Lane, Ste 2100  
Foster City ..... (650) 437-5085  
[www.meraki-realestate.com](http://www.meraki-realestate.com)

**Signature Realty - Robert A. Pedro \***

702 Marshall St., Ste 320  
Redwood City  
950 Tower Lane Ste 320  
Foster City ..... (650) 341-5833  
[www.signatureRM.com](http://www.signatureRM.com)

**Today Sotheby's International Realty**

1250 San Carlos Ave., Ste 101  
San Carlos ..... (650) 597-1800  
[www.todaysir.com](http://www.todaysir.com)

**REAL ESTATE DEVELOPERS & INVESTORS**

**LENNAR \***

2603 Camino Ramon Ste 525  
San Ramon ..... (925) 242-0811  
[www.lennar.com](http://www.lennar.com)

**Marlin Cove Shopping Center**

8905 Towne Center Dr, Ste 108  
San Diego ..... (858) 255-4906  
[www.roireit.net](http://www.roireit.net)

**MQ Investment Management \***

PO Box 4790  
Foster City ..... (650) 888-9585

*YOUR PENINSULA SPECIALIST & FOSTER CITY NEIGHBORS*  
*Specializing in residential and residential income sales, leasing and property management*



Susan Lindstrom, Broker/Owner  
CRS, SRES 650-345-2850  
cahouseelady@comcast.net  
DRE #00460252



**ELITE PROPERTIES**  
329 Mullet Court  
Foster City, CA 94404



Jeanette Carter, Realtor  
650-576-8192  
mizjc2@aol.com  
DRE #00855187



Paul Montalvo, Realtor  
650-364-3167  
paul@paulmontalvo.com  
DRE #02026074

**WE ARE FULL-SERVICE BROKERS.**

When you get ready to sell not only do we help you with pricing, but preparing the house to sell which could involve clearing out, cleaning up house & yard, updating, staging, listing services and follow-up on the escrow once it is sold. We're there for you before, during and after the sale! Contact Us!



Stephanie Russell, Realtor  
650-315-7222  
stepshome@aol.com  
DRE #01075847

**"EXCEPTIONAL REAL ESTATE SERVICE"**



**SIGNATURE REALTY**

*"We Love What We Do"*

RESIDENTIAL & INCOME PROPERTY SALES  
LEASING & PROPERTY MANAGEMENT

CALL OR TEXT  
**415-722-5510**  
[www.SignatureRM.com](http://www.SignatureRM.com)

DRE# 01381122

**Robert A. Pedro**  
Broker/Owner  
See me on LinkedIn



**MidPen Housing Corporation**

303 Vintage Park Dr. Ste 250  
Foster City ..... (650) 356-2900  
[www.midpen-housing.org](http://www.midpen-housing.org)

**Sares Regis Group of Northern California**

901 Mariner's Island Blvd., Ste. 700  
San Mateo ..... (650) 377-5724  
[www.srgnc.com](http://www.srgnc.com)

**Thompson Dorfman Partners, LLC \***

39 Forrest St, Ste 201  
Mill Valley ..... (415) 381-3001  
[www.thompsondorfman.com](http://www.thompsondorfman.com)

**TR Parkside Towers Corp**

1031 E. Hillsdale Blvd., Ste E  
Foster City ..... (650) 212-2077

# MERAKI

real estate



*A head for real estate, a heart for people*



**Rica Ruiz, SRES®**  
 FOUNDER | REALTOR®  
 650.437.5085 • DRE #01353905  
 rica@meraki-realestate.com

At Meraki Real Estate, we're committed to helping you achieve your goals. As a leading real estate brand in the mid-Peninsula, we advocate for our clients by utilizing our intimate knowledge of the local market coupled with our extensive experience in the industry. We continue to successfully lead our clients through complex real estate transactions from helping sell and purchase single-family homes to multi-family homes, investment properties, 1031 exchanges and more! Rica is also a licensed Broker, Seniors Real Estate Specialists (SRES) and Short Sale and Foreclosure Resource (SFR) certified.

Although focused on the mid-Peninsula, our services don't stop at the Bay. We've helped our clients relocate and invest nationwide and our incredible network of agents is available wherever life takes you.

We care deeply about our community and believe that together, we can make a difference. When you work with Meraki, you help create outreach initiatives like hosting pancake breakfasts and backpack drives for our local under-resourced schools. We also provide monthly financial support to 10 different non-profit organizations. Our team regularly volunteers in the community through the Foster City & San Mateo Chambers of Commerce, Generations United, our local church and more. We're humanitarians above all, and we love to serve.



## MEMBER DIRECTORY

### COMMERCIAL REAL ESTATE MANAGEMENT

#### Cala Properties

Foster City ..... (650) 574-1445  
[www.bobandcookiecala.com](http://www.bobandcookiecala.com)

#### Hudson Pacific Properties, Inc.

950 Tower Lane STE 390 West  
 Foster City ..... (650) 227-4069  
[www.HudsonPacificProperties.com](http://www.HudsonPacificProperties.com)

#### Main Street Property Services, Inc

971 Dewing Ave, Ste 200  
 Lafayette ..... (925) 299-8170  
[www.mspsinc.com](http://www.mspsinc.com)

#### The Manor Association \*

353 Main Street  
 Redwood City ..... (650) 637-1616  
[www.themanorassn.com](http://www.themanorassn.com)

#### PML Management

655 Mariners Blvd Ste 301  
 San Mateo ..... (650) 349-9113  
[www.pmlmanagement.com](http://www.pmlmanagement.com)

#### Signature Realty - Robert A. Pedro \*

702 Marshall St., Ste 320  
 Redwood City  
 950 Tower Lane Ste 320  
 Foster City ..... (650) 341-5833  
[www.signatureRM.com](http://www.signatureRM.com)

### REAL ESTATE STAGING

#### Innovae Designs

Foster City ..... (650) 450-3648  
[www.innovaedesigns.com](http://www.innovaedesigns.com)

### RESTAURANTS

#### Armadillo Willy's BBQ

2260 Bridgepointe Pkwy  
 San Mateo ..... (650) 571-7427  
[www.armadillowillys.com](http://www.armadillowillys.com)

#### Bellini Bistro

1465 Beach Park Blvd  
 Foster City ..... (650) 315-2999  
[www.bistrobellini.com](http://www.bistrobellini.com)



From hard-at-work to right-at-ease, see how our guest rooms do it all.

CourtyardFosterCity.com  
 650-377-0600





Make room for a little fun™

PROVEN RECORD OF SUCCESS  
 Buying and Selling Foster City

*Julie*  
 JULIE FLOUTY HOMES

BUY with KNOWLEDGE.  
 SELL with CONFIDENCE.

 JULIE FLOUTY  
 650.504.6900  
 Julie@JulieFlouty.com  
 www.JulieFlouty.com  
 DRE#01901710



COME JOIN US AT THE INTERNATIONAL COFFEE BAR

AND MEET THE COFFEES FROM AROUND THE WORLD!



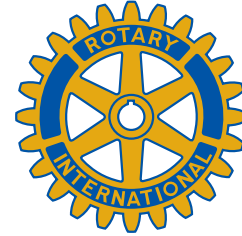
3 PLAZA VIEW LANE - SUITE N  
FOSTER CITY, CA 94404  
650.393.4035

GREEK COFFEE - ESPRESSO BAR - POUR OVER COFFEE  
EXCLUSIVE ROASTS - TEAS - PASTRIES



We are a volunteer leadership organization which believes in "Service Above Self" through cause driven community service activities.

For more information, please contact Joyce Marie Cave, Rotary Membership Director at caveclan@yahoo.com



www.fostercityrotary.org

SCHOOLS - COLLEGES & CONTINUING ED

College of San Mateo

1700 West Hillsdale Blvd.  
San Mateo .....(650) 574-6619

San Mateo Adult School

789 E. Poplar Avenue  
San Mateo ..... (650) 558-2100  
www.smace.org

SCHOOLS - PRIMARY EDUCATION

Foster City Pre-School & Day Care Center \*

1685 Eisenhower Street  
San Mateo ..... (650) 341-2041  
www.FosterCityPreschool.com

Futures Academy

1840 Gateway Drive, Suite 100  
San Mateo ..... (650) 539-0240  
www.futures.edu



FOSTER CITY PRE-SCHOOL & DAY CARE CENTER

One of the most prestigious & respected pre-schools on the peninsula since 1973

A cheerful place for your child to learn and grow

(650) 341-2041

www.fostercitypreschool.com

Dhaba Xpress

310-312 Arguello St  
Redwood City .....(650) 919-4751  
www.dhaba-xpress.com

Dozo Izakaya

3 Plaza View Lane  
Foster City ..... (650) 380-8087

5 Guys Burgers & Fries

1181 Chess Dr  
Foster City .....(650) 312-9934

MOD Pizza

1297 Chess Drive, Suite B  
Foster City .....(650) 477-6484  
www.modpizza.com

Penelope's Coffee & Tea \*

3 Plaza View Lane STE N  
Foster City ..... (650) 393-4035  
www.penelopescoffee.com

Poppies Bistro

711 Thayer Lane  
Foster City ..... (650) 293-0274  
www.atriafostersquare.com

Sandwich Monkey \*

3 Plaza View Lane, Suite V  
Foster City ..... (650) 274-0264  
www.thesandwichmonkey.com

Shiki Bento House

1100 Foster Square Lane #145  
Foster City ..... (650) 437-2095  
www.shikibentohouse.com

Starbird Chicken

1141 Triton Dr  
Foster City ..... (650) 570-0593  
www.starbirdchicken.com

Tokie's Japanese Restaurant

34 East 4th Ave  
San Mateo ..... (650) 570-6609  
www.tokies.com

Waterfront Pizza \*

969 Edgewater Blvd., Ste. D  
Foster City ..... (650) 573-6634  
www.waterfrontpizza.com

Dozo Izakaya  
Japanese Fusion Cuisine



Fresh Quality, Healthy Lifestyle

3 Plaza View Lane, Foster City | 650-358-8889  
www.Dozo-izakaya.com

Kids Connection \*

1970 -1998 Beach Park Blvd.  
Foster City ..... (650) 578-9697  
www.kc4us.com

Ronald C Wornick Jewish Day School

800 Foster City Blvd.  
Foster City ..... (650) 378-2600  
www.wornickjds.org

San Mateo-Foster City School District

1170 Chess Drive  
Foster City ..... (650) 312-7700  
www.smfc.k12.ca.us

Sea Breeze School

900 Edgewater Blvd.  
Foster City ..... (650) 574-5437  
www.seabreezeschool.com

SECURITY CONSULTANTS

Defense Logistics Specialist Corp.\*

533 Airport Blvd., Suite 400  
Burlingame ..... (415) 722-5800  
www.dlscorp.us

## SENIOR SERVICES/COMMUNITIES

- Alegre Home Care**  
1660 S Amphlett Blvd, Suite 128  
San Mateo ..... (650) 757-2000  
[www.alegrehomecare.com](http://www.alegrehomecare.com)
- Atria at Foster Square \***  
707 Thayer Lane  
Foster City ..... (650) 288-1657  
[www.atriafostersquare.com](http://www.atriafostersquare.com)
- Foster City Village**  
1000 E Hillsdale Blvd #210  
Foster City ..... (650) 378-8541  
[www.fostercityvillage.org](http://www.fostercityvillage.org)
- Lesley Senior Communities**  
700 Laurel Ave  
San Mateo ..... (650) 726-4888  
[www.lesleyseniorcommunities.org](http://www.lesleyseniorcommunities.org)

- Maxwell's Senior Care Services**  
846 Andromedia Lane  
Foster City ..... (650) 218-5234  
[www.maxwellseniorcare.com](http://www.maxwellseniorcare.com)
- The Peninsula Regent**  
1 Baldwin Avenue  
San Mateo ..... (650) 579-5500

## SHIPPING/NOTARY

- UPS Store #4153**  
1098 Foster City Blvd, STE 106  
Foster City ..... (650) 341-4000  
[www.upsstorelocal.com/4153](http://www.upsstorelocal.com/4153)
- UPS Store, The**  
969-G Edgewater Blvd.  
Foster City ..... (650) 572-9100  
[www.theupsstorelocal.com/0244](http://www.theupsstorelocal.com/0244)

**HILLBARN THEATRE & CONSERVATORY**

**AWARD-WINNING EDUCATION & ENTERTAINMENT IN YOUR BACKYARD**

**JOIN US FOR**  
Family Acting Classes  
Musical Training  
Musical Theatre  
Camps & More!  
Classes are Year Round!

**OR**

**6 MAINSTAGE PERFORMANCES:  
4 Musicals & 2 Plays**

ENJOY THE GIFT OF LIVE THEATRE  
BOOK YOUR TICKETS OR  
ENROLL TODAY!

Ph: 650.349.6411 x2  
Email: [boxoffice@hillbarntheatre.org](mailto:boxoffice@hillbarntheatre.org)  
[www.hillbarntheatre.org](http://www.hillbarntheatre.org)

## THEATERS

- Hillbarn Theatre & Conservatory**  
1285 E. Hillsdale Blvd.  
Foster City ..... (650) 349-6411  
[www.hillbarntheatre.org](http://www.hillbarntheatre.org)

## TRANSPORTATION

- Commute.org**  
400 Oyster Point Blvd, STE 409  
South San Francisco ..... (650) 588-8170  
[www.commute.org](http://www.commute.org)
- San Mateo County Transit District**  
1250 San Carlos Ave  
San Carlos ..... (650)508-6385  
[www.smctd.com](http://www.smctd.com)
- Scoop Technologies, Inc. •**  
55 2nd Street, Suite #550  
San Francisco ..... (248) 891-8996  
[www.takescoop.com](http://www.takescoop.com)
- Zoox †**  
1149 Chess Dr  
Foster City ..... (949) 322-6433  
[www.zoox.com](http://www.zoox.com)

## TREE SERVICES

- Arborists Now, Inc.**  
580 California St, 12th Floor  
San Francisco ..... (415) 310-7781  
[www.arboristnow.com](http://www.arboristnow.com)
- Monster Tree Service**  
Belmont ..... (650) 733-2090  
[www.whymonster.com/coast](http://www.whymonster.com/coast)



**THE Clubhouse BISTRO**

**Sports Bar**  
\*Happy Hour, Everyday 4 - 6PM  
\*Watch your Favorite Sports Team on our 20 HD TVs  
\*Top Shelf Liquors & Premium Brands  
\*Extensive Wine & Beer List  
\*Wings, Burgers, Pizza and much more...

**Private Party Rooms**  
\*Available Parties for 20 - 70 People  
\*Birthday Parties  
\*Corporate Gathering  
\*Bridal Shower  
\*Retirement Parties  
\*Holiday Parties

**DJ & Dancing**  
\* Live DJ Fri & Sat 9:00pm - 1:30am  
\*\$10 cover charge  
\*Playing Today's Top 40 Hits & Salsa  
\*Premium Bottle Service  
\*Appetizers  
\*Party Platters

**www.clubhousebistro.com**  
1221 Chess Drive, Foster City, CA 94404 ~ tel: (650) 570 - 5700 ~ web: [www.eventscp.com](http://www.eventscp.com)

## SHOPPING/RETAIL CENTERS

- Beach Park Plaza**  
PO Box 157  
Los Altos ..... (650) 967-5519
- Chess Corner Retail Center \***  
1297 Chess Dr  
Foster City
- Marlin Cove Shopping Center**  
8905 Towne Center Dr, Suite 108  
San Diego ..... (858) 255-4906  
[www.roireit.net](http://www.roireit.net)

## STORAGE, RENTAL

- AAAAA Rent A Space**  
1221 E. Hillsdale Blvd.  
Foster City ..... (650) 341-2964  
[www.5aspace.com](http://www.5aspace.com)

**Cristina E. Reddell, EA**  
Individual & Business Tax Preparation  
Consulting, Planning, Bookkeeping Services  
[tina@reddelltax.com](mailto:tina@reddelltax.com)  
**650-349-9333**  
650-349-9482 fax  
1111 Triton Dr, Ste 102 • Foster City, CA 94404  
Since 1978  
[www.reddelltax.com](http://www.reddelltax.com)  
*Enrolled to represent taxpayers before the Internal Revenue Service*



© Photo by Nicoleta Viscapiova



**350 GUEST ROOMS  
RELAX**

- Free Parking
- Free Wi-Fi
- Free SFO Shuttle
- 24hr Fitness Center
- Hertz on Property



**RESTAURANTS  
3 OUTLETS**

- Cafe Florian
- Amazing Sunday Brunch
- Clubhouse Bistro
- Sports Bar & Bistro
- Tokyo Village
- Full Sushi Bar & Restaurant



**16,000 SQUARE FEET  
MEETING SPACE**

- Flexible Space
- Corporate Events
- Weddings
- Bar/Bat Mitzvah
- Quinceaneras
- All Social Events

[www.eventscp.com](http://www.eventscp.com)

1221 CHESS DRIVE, FOSTER CITY, CA 94404 ~ TEL: (650) 570-5700

**UTILITIES**

**Pacific Gas & Electric Co.**

275 Industrial Road  
San Carlos ..... (800) 743-5000  
[www.pge.com/business](http://www.pge.com/business)

**VETERINARIANS**

**Animal Cove Pet Hospital \***

1940 Beach Park Blvd.  
Foster City ..... (650) 377-0822  
[www.animalcove.com](http://www.animalcove.com)

**Indy's Place Pet Hospital**

1098 Foster City Blvd, Suite 102  
Foster City ..... (650) 437-2339  
[www.indyspethospital.com](http://www.indyspethospital.com)

**VIDEO PRODUCTION SERVICES**

**Your Story Video Productions**

680 Catamaran Street  
Foster City ..... (650) 350-1610  
[www.yourstoryvideos.com](http://www.yourstoryvideos.com)

**WHOLESALE / RESALE**

**COSTCO**

1001 Metro Center #147  
Foster City ..... (650) 286-0739  
[www.costco.com](http://www.costco.com)

**QA Group, LLC**

3400 East Third Avenue  
Foster City ..... (650) 312-0900  
[www.lqa.com](http://www.lqa.com)

*Foster City Islander*

**Foster City's Oldest Local Weekly Newspaper Published every Wednesday for 46 years**

ph 650-574-5952 fax 650-240-3870  
Inquiries email: [info@fostercityislander.com](mailto:info@fostercityislander.com)  
Legals email: [info@fostercityislander.com](mailto:info@fostercityislander.com)  
News email: [news@fostercityislander.com](mailto:news@fostercityislander.com)

**Publishers:**  
**Mark Watson & Bob Jungbluth**



© Photo by Angelica Castillo



- manage.
- advocate.
- nearby.
- obsessive.
- responsive.

Let's talk  
about your  
HOA needs.

1.888.475.7317

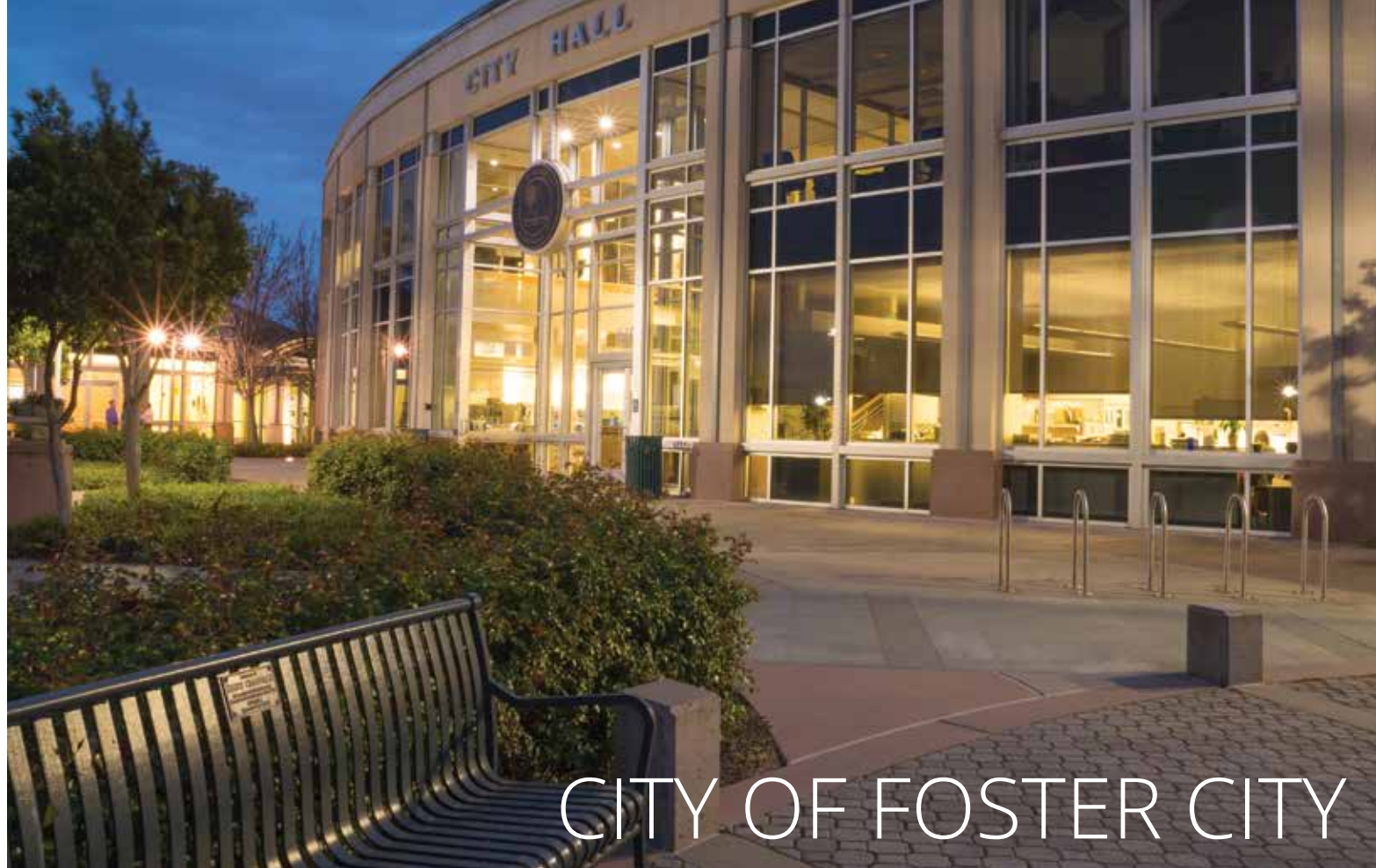
[info@manorinc.com](mailto:info@manorinc.com)

Full Service Association Management  
Since 1973

[www.manorinc.com](http://www.manorinc.com)

**manor<sup>®</sup>**



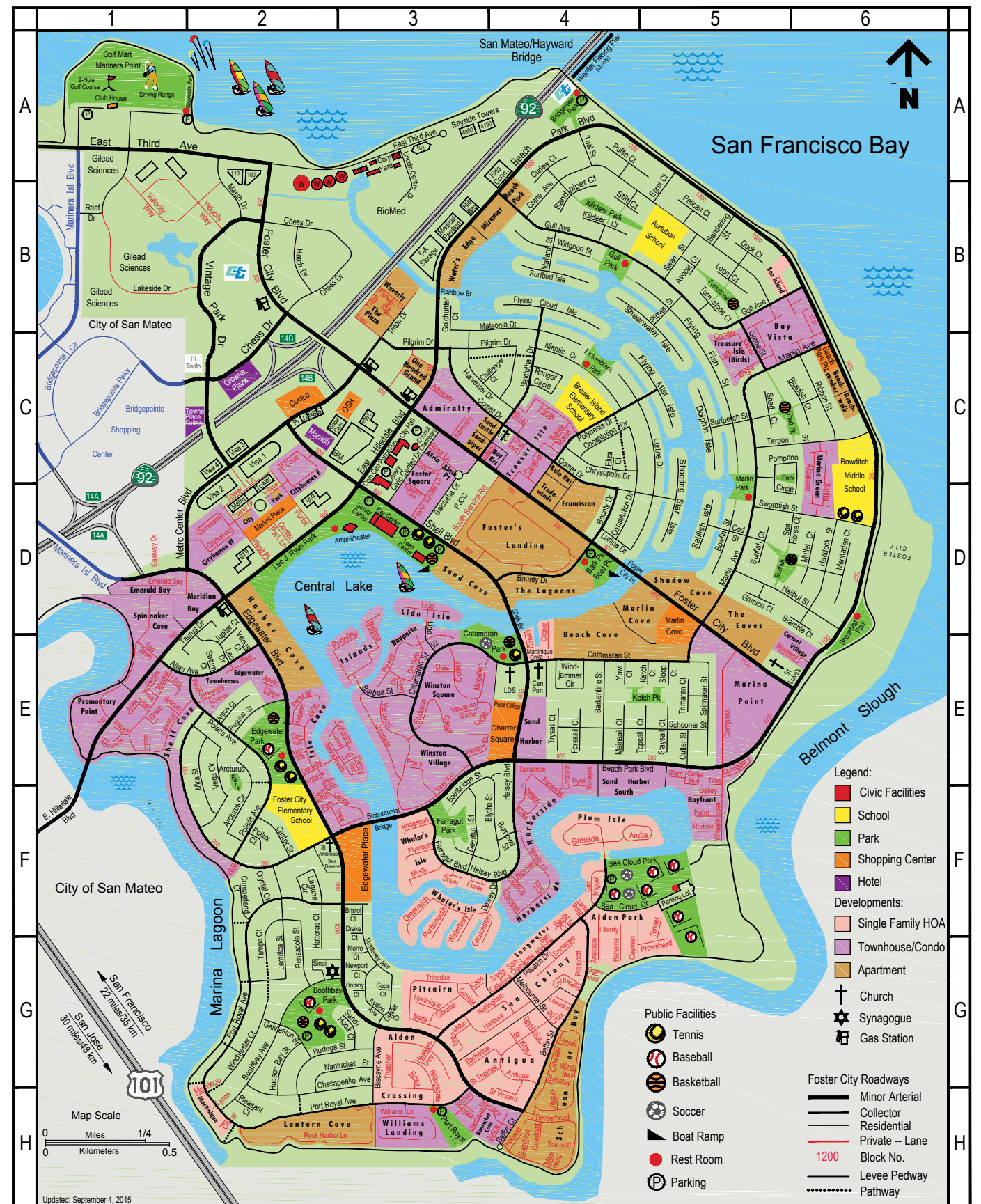


# CITY OF FOSTER CITY

## CONTACTS

- Building Division..... (650) 286-3227  
Building@fostercity.org
- Business Licenses ..... (650) 286-3258  
BusinessLicense@fostercity.org
- Cable Complaints ..... (650) 286-3506  
CableTVHelp@fostercity.org
- City Attorney..... (650) 286-3220  
CityAttorney@fostercity.org
- City Clerk..... (650) 286-3250  
Clerk@fostercity.org
- City Manager ..... (650) 286-3220  
Manager@fostercity.org
- Code Enforcement..... (650) 286-3225  
Planning@fostercity.org
- Community Development..... (650) 286-3232  
CDD@fostercity.org
- Emergencies (Fire, Police or Medical). (650) 573-3333 or 911
- Financial Services..... (650) 286-3212  
Finance@fostercity.org
- Fire Department (Non-Emergency)..... (650) 286-3350  
Fire@fostercity.org
- Foster City Television ..... (650) 286-3250  
FCTV@fostercity.org

- Engineering..... (650) 286-3270  
PublicWorks@fostercity.org
- Human Resources ..... (650) 286-3205  
HR@fostercity.org
- Parks Maintenance..... (650) 286-8140  
Recreation@fostercity.org
- Planning Division..... (650) 286-3225  
Planning@fostercity.org
- Police Department (Non-Emergency)..... (650) 286-3300  
Police@fostercity.org
- Public Works Administration ..... (650) 286-3270  
PublicWorks@fostercity.org
- Public Works Maintenance ..... (650) 286-8140  
PublicWorks@fostercity.org
- Recreation Division ..... (650) 286-3380  
Recreation@fostercity.org
- Senior Center..... (650) 286-2585  
Recreation@fostercity.org
- Streets/Lagoon Division ..... (650) 286-8140  
PublicWorks@fostercity.org
- Utility Payments..... (650) 286-3261  
Utility@fostercity.org
- Vibe (Youth Center) ..... (650) 286-3254  
Recreation@fostercity.org
- Wastewater (Sewer) Division..... (650) 286-8140  
PublicWorks@fostercity.org
- Water Division..... (650) 286-8140  
PublicWorks@fostercity.org



--- S t r e e t I n d e x ---																							
Admiralty Ln	C/3	Blythe St	F/4	Chaboc Ln	C/4	DeSoto Ln	E/3	Foster Square Ln	C-D/3	Hydra Ln	E/1	Marlin Ave	C-D/5	Rudford Ln	F/4	Sea Island Ln	B/5	Tower Green Ln	D/2				
Albion Ln	C-D/6	Bobcat Ln	G/4	Chesapeake Ave	H/2	Decatur St	F/3	Gallion Ln	C/4	Jamaica St	G/2	Manette Ln	E/3	Pavo Ln	E/1	Ram Ln	F/2	Sea Spray Ln	H/4	Trancon Ln	H/4		
Alma Ln	C/3	Bodega St	G/2	Chess Dr	B-C/2	Dewey St	F/4	Galton Ln	C/4	Lincoln St	G/2	Mary Dr	B/2	Pagosa Ln	E/2	Ranger Cr	C/4	Shad Cr	E/1	Tranman Cr	E/5		
Alta Ave	E/1-2	Boyle Ln	C/6	Chrysope Dr	C/5	Diaz Ln	E/3	Gayley Ln	F/5	Lincoln Ln	G/3	Monterey Ave	G/3	Palmer Ln	G/3	Shawnee Ln	B-2/5	Shawnee Ln	B-2/5	Triton Cr	G/3		
Alvarado Ln	G/4	Boothbay Ave	G/2	Cityhomes Ln	D/2	Dolphin Ln	C/5	Galveston St	G/2	Juno Ln	E/2	Marblehead Ln	H/4	Pensacola St	G/2	Regulus St	E/2	Shell Blvd	C-E/2-4	Tilton Dr	C/3		
Andromeda Ln	E/2	Botany Ct	G/3	Civic Center Dr	C/3	Domestic Ln	G/4	Galeshead Ct	G/4	Jupiter Ct	E/2	Matsonia Dr	B/4	Pensacola Ln	E/2	Ribbon St	C/2	Shooting Star Isle	C-D/5	Tilton Park Ln	B-C/2		
Antares Ln	E/2	Bourby Dr	D/4	Code Ln	D/5	Dory Ln	H/3	Genem Ln	E/1	Kelch Ct	E/4	Mendenhall Ln	D/6	Perrin Ln	C/5-4	Rigel Ln	E/2	Sloop Ct	E/5	Tunstone Ct	B/5		
Antigua Ln	G/4	Bowfin St	H/5	Cod St	D/5	Dove Ln	C/5	Genem Ln	E/1	Kelch Ct	E/4	Mendenhall Ln	D/6	Perrin Ln	C/5-4	Rigel Ln	E/2	Sloop Ct	E/5	Tunstone Ct	B/5		
Apollo Ln	E/2	Bozworth Ln	H/4	Combs Ln	E/5	Dove Ln	C/5	Genem Ln	E/1	Kelch Ct	E/4	Mendenhall Ln	D/6	Perrin Ln	C/5-4	Rigel Ln	E/2	Sloop Ct	E/5	Tunstone Ct	B/5		
Aquarius Ln	E/1	Brandt Ct	D/6	Combs Ln	E/5	Dove Ln	C/5	Genem Ln	E/1	Kelch Ct	E/4	Mendenhall Ln	D/6	Perrin Ln	C/5-4	Rigel Ln	E/2	Sloop Ct	E/5	Tunstone Ct	B/5		
Ara Ln	E/2	Bridgeport Ln	F/3	Combs Ln	E/5	Dove Ln	C/5	Genem Ln	E/1	Kelch Ct	E/4	Mendenhall Ln	D/6	Perrin Ln	C/5-4	Rigel Ln	E/2	Sloop Ct	E/5	Tunstone Ct	B/5		
Arcturus Cr	F/2	Bristol Ct	F/3	Combs Ln	E/5	Dove Ln	C/5	Genem Ln	E/1	Kelch Ct	E/4	Mendenhall Ln	D/6	Perrin Ln	C/5-4	Rigel Ln	E/2	Sloop Ct	E/5	Tunstone Ct	B/5		
Arcturus Cr	F/2	Bristol Ct	F/3	Combs Ln	E/5	Dove Ln	C/5	Genem Ln	E/1	Kelch Ct	E/4	Mendenhall Ln	D/6	Perrin Ln	C/5-4	Rigel Ln	E/2	Sloop Ct	E/5	Tunstone Ct	B/5		
Arcturus Cr	F/2	Bristol Ct	F/3	Combs Ln	E/5	Dove Ln	C/5	Genem Ln	E/1	Kelch Ct	E/4	Mendenhall Ln	D/6	Perrin Ln	C/5-4	Rigel Ln	E/2	Sloop Ct	E/5	Tunstone Ct	B/5		
Arcturus Cr	F/2	Bristol Ct	F/3	Combs Ln	E/5	Dove Ln	C/5	Genem Ln	E/1	Kelch Ct	E/4	Mendenhall Ln	D/6	Perrin Ln	C/5-4	Rigel Ln	E/2	Sloop Ct	E/5	Tunstone Ct	B/5		
Arcturus Cr	F/2	Bristol Ct	F/3	Combs Ln	E/5	Dove Ln	C/5	Genem Ln	E/1	Kelch Ct	E/4	Mendenhall Ln	D/6	Perrin Ln	C/5-4	Rigel Ln	E/2	Sloop Ct	E/5	Tunstone Ct	B/5		
Arcturus Cr	F/2	Bristol Ct	F/3	Combs Ln	E/5	Dove Ln	C/5	Genem Ln	E/1	Kelch Ct	E/4	Mendenhall Ln	D/6	Perrin Ln	C/5-4	Rigel Ln	E/2	Sloop Ct	E/5	Tunstone Ct	B/5		
Arcturus Cr	F/2	Bristol Ct	F/3	Combs Ln	E/5	Dove Ln	C/5	Genem Ln	E/1	Kelch Ct	E/4	Mendenhall Ln	D/6	Perrin Ln	C/5-4	Rigel Ln	E/2	Sloop Ct	E/5	Tunstone Ct	B/5		
Arcturus Cr	F/2	Bristol Ct	F/3	Combs Ln	E/5	Dove Ln	C/5	Genem Ln	E/1	Kelch Ct	E/4	Mendenhall Ln	D/6	Perrin Ln	C/5-4	Rigel Ln	E/2	Sloop Ct	E/5	Tunstone Ct	B/5		
Arcturus Cr	F/2	Bristol Ct	F/3	Combs Ln	E/5	Dove Ln	C/5	Genem Ln	E/1	Kelch Ct	E/4	Mendenhall Ln	D/6	Perrin Ln	C/5-4	Rigel Ln	E/2	Sloop Ct	E/5	Tunstone Ct	B/5		
Arcturus Cr	F/2	Bristol Ct	F/3	Combs Ln	E/5	Dove Ln	C/5	Genem Ln	E/1	Kelch Ct	E/4	Mendenhall Ln	D/6	Perrin Ln	C/5-4	Rigel Ln	E/2	Sloop Ct	E/5	Tunstone Ct	B/5		
Arcturus Cr	F/2	Bristol Ct	F/3	Combs Ln	E/5	Dove Ln	C/5	Genem Ln	E/1	Kelch Ct	E/4	Mendenhall Ln	D/6	Perrin Ln	C/5-4	Rigel Ln	E/2	Sloop Ct	E/5	Tunstone Ct	B/5		
Arcturus Cr	F/2	Bristol Ct	F/3	Combs Ln	E/5	Dove Ln	C/5	Genem Ln	E/1	Kelch Ct	E/4	Mendenhall Ln	D/6	Perrin Ln	C/5-4	Rigel Ln	E/2	Sloop Ct	E/5	Tunstone Ct	B/5		
Arcturus Cr	F/2	Bristol Ct	F/3	Combs Ln	E/5	Dove Ln	C/5	Genem Ln	E/1	Kelch Ct	E/4	Mendenhall Ln	D/6	Perrin Ln	C/5-4	Rigel Ln	E/2	Sloop Ct	E/5	Tunstone Ct	B/5		
Arcturus Cr	F/2	Bristol Ct	F/3	Combs Ln	E/5	Dove Ln	C/5	Genem Ln	E/1	Kelch Ct	E/4	Mendenhall Ln	D/6	Perrin Ln	C/5-4	Rigel Ln	E/2	Sloop Ct	E/5	Tunstone Ct	B/5		
Arcturus Cr	F/2	Bristol Ct	F/3	Combs Ln	E/5	Dove Ln	C/5	Genem Ln	E/1	Kelch Ct	E/4	Mendenhall Ln	D/6	Perrin Ln	C/5-4	Rigel Ln	E/2	Sloop Ct	E/5	Tunstone Ct	B/5		
Arcturus Cr	F/2	Bristol Ct	F/3	Combs Ln	E/5	Dove Ln	C/5	Genem Ln	E/1	Kelch Ct	E/4	Mendenhall Ln	D/6	Perrin Ln	C/5-4	Rigel Ln	E/2	Sloop Ct	E/5	Tunstone Ct	B/5		
Arcturus Cr	F/2	Bristol Ct	F/3	Combs Ln	E/5	Dove Ln	C/5	Genem Ln	E/1	Kelch Ct	E/4	Mendenhall Ln	D/6	Perrin Ln	C/5-4	Rigel Ln	E/2	Sloop Ct	E/5	Tunstone Ct	B/5		
Arcturus Cr	F/2	Bristol Ct	F/3	Combs Ln	E/5	Dove Ln	C/5	Genem Ln	E/1	Kelch Ct	E/4	Mendenhall Ln	D/6	Perrin Ln	C/5-4	Rigel Ln	E/2	Sloop Ct	E/5	Tunstone Ct	B/5		
Arcturus Cr	F/2	Bristol Ct	F/3	Combs Ln	E/5	Dove Ln	C/5	Genem Ln	E/1	Kelch Ct	E/4	Mendenhall Ln	D/6	Perrin Ln	C/5-4	Rigel Ln	E/2	Sloop Ct	E/5	Tunstone Ct	B/5		
Arcturus Cr	F/2	Bristol Ct	F/3	Combs Ln	E/5	Dove Ln	C/5	Genem Ln	E/1	Kelch Ct	E/4	Mendenhall Ln	D/6	Perrin Ln	C/5-4	Rigel Ln	E/2	Sloop Ct	E/5	Tunstone Ct	B/5		
Arcturus Cr	F/2	Bristol Ct	F/3	Combs Ln	E/5	Dove Ln	C/5	Genem Ln	E/1	Kelch Ct	E/4	Mendenhall Ln	D/6	Perrin Ln	C/5-4	Rigel Ln	E/2	Sloop Ct	E/5	Tunstone Ct	B/5		
Arcturus Cr	F/2	Bristol Ct	F/3	Combs Ln	E/5	Dove Ln	C/5	Genem Ln	E/1	Kelch Ct	E/4	Mendenhall Ln	D/6	Perrin Ln	C/5-4	Rigel Ln	E/2	Sloop Ct	E/5	Tunstone Ct	B/5		
Arcturus Cr	F/2	Bristol Ct	F/3	Combs Ln	E/5	Dove Ln	C/5	Genem Ln	E/1	Kelch Ct	E/4	Mendenhall Ln	D/6	Perrin Ln	C/5-4	Rigel Ln	E/2	Sloop Ct	E/5	Tunstone Ct	B/5		
Arcturus Cr	F/2	Bristol Ct	F/3	Combs Ln	E/5	Dove Ln	C/5	Genem Ln	E/1	Kelch Ct	E/4	Mendenhall Ln	D/6	Perrin Ln	C/5-4	Rigel Ln	E/2	Sloop Ct	E/5	Tunstone Ct	B/5		
Arcturus Cr	F/2	Bristol Ct	F/3	Combs Ln	E/5	Dove Ln	C/5	Genem Ln	E/1	Kelch Ct	E/4	Mendenhall Ln	D/6	Perrin Ln	C/5-4	Rigel Ln	E/2	Sloop Ct	E/5	Tunstone Ct	B/5		
Arcturus Cr	F/2	Bristol Ct	F/3	Combs Ln	E/5	Dove Ln	C/5	Genem Ln	E/1	Kelch Ct	E/4	Mendenhall Ln	D/6	Perrin Ln	C/5-4	Rigel Ln	E/2	Sloop Ct	E/5	Tunstone Ct	B/5		
Arcturus Cr	F/2	Bristol Ct	F/3	Combs Ln	E/5	Dove Ln	C/5	Genem Ln	E/1	Kelch Ct	E/4	Mendenhall Ln	D/6	Perrin Ln	C/5-4	Rigel Ln	E/2	Sloop Ct	E/5	Tunstone Ct	B/5		
Arcturus Cr	F/2	Bristol Ct	F/3	Combs Ln	E/5	Dove Ln	C/5	Genem Ln	E/1	Kelch Ct	E/4	Mendenhall Ln	D/6	Perrin Ln	C/5-4	Rigel Ln	E/2	Sloop Ct	E/5	Tunstone Ct	B/5		
Arcturus Cr	F/2	Bristol Ct	F/3	Combs Ln	E/5	Dove Ln	C/5	Genem Ln	E/1	Kelch Ct	E/4	Mendenhall Ln	D/6	Perrin Ln	C/5-4	Rigel Ln	E/2	Sloop Ct	E/5	Tunstone Ct	B/5		
Arcturus Cr	F/2	Bristol Ct	F/3	Combs Ln	E/5	Dove Ln	C/5	Genem Ln	E/1	Kelch Ct	E/4	Mendenhall Ln	D/6	Perrin Ln	C/5-4	Rigel Ln	E/2	Sloop Ct	E/5	Tunstone Ct	B/5		
Arcturus Cr	F/2	Bristol Ct	F/3	Combs Ln	E/5	Dove Ln	C/5	Genem Ln	E/1	Kelch Ct	E/4	Mendenhall Ln	D/6	Perrin Ln	C/5-4	Rigel Ln	E/2	Sloop Ct	E/5	Tunstone Ct	B/5		
Arcturus Cr	F/2	Bristol Ct	F/3	Combs Ln	E/5	Dove Ln	C/5	Genem Ln	E/1	Kelch Ct	E/4	Mendenhall Ln	D/6	Perrin Ln	C/5-4	Rigel Ln	E/2	Sloop Ct	E/5	Tunstone Ct	B/5		
Arcturus Cr	F/2	Bristol Ct	F/3	Combs Ln	E/5	Dove Ln	C/5	Genem Ln	E/1	Kelch Ct	E/4	Mendenhall Ln	D/6	Perrin Ln	C/5-4	Rigel Ln	E/2	Sloop Ct	E/5	Tunstone Ct	B/5		
Arcturus Cr	F/2	Bristol Ct	F/3	Combs Ln	E/5	Dove Ln	C/5	Genem Ln	E/1	Kelch Ct	E/4	Mendenhall Ln	D/6	Perrin Ln	C/5-4	Rigel Ln	E/2	Sloop Ct	E/5	Tunstone Ct	B/5		
Arcturus Cr	F/2	Bristol Ct	F/3	Combs Ln	E/5	Dove Ln	C/5	Genem Ln	E/1	Kelch Ct	E/4	Mendenhall Ln	D/6	Perrin Ln	C/5-4	Rigel Ln	E/2	Sloop Ct	E/5	Tunstone Ct	B/5		
Arcturus Cr	F/2	Bristol Ct	F/3	Combs Ln	E/5	Dove Ln	C/5	Genem Ln	E/1	Kelch Ct	E/4	Mendenhall Ln	D/6	Perrin Ln	C/5-4	Rigel Ln	E/2	Sloop Ct	E/5	Tunstone Ct	B/5		
Arcturus Cr	F/2	Bristol Ct	F/3	Combs Ln	E/5	Dove Ln	C/5	Genem Ln	E/1	Kelch Ct	E/4	Mendenhall Ln	D/6	Perrin Ln	C/5-4	Rigel Ln	E/2	Sloop Ct	E/5	Tunstone Ct	B/5		
Arcturus Cr	F/2	Bristol Ct	F/3	Combs Ln	E/5	Dove Ln	C/5	Genem Ln	E/1	Kelch Ct	E/4	Mendenhall Ln	D/6	Perrin Ln	C/5-4	Rigel Ln	E/2	Sloop Ct	E/5	Tunstone Ct	B/5		
Arcturus Cr	F/2	Bristol Ct	F/3	Combs Ln	E/5	Dove Ln	C/5	Genem Ln	E/1	Kelch Ct	E/4	Mendenhall Ln	D/6	Perrin Ln	C/5-4	Rigel Ln	E/2	Sloop Ct	E/5	Tunstone Ct	B/5		
Arcturus Cr	F/2	Bristol Ct	F/3	Combs Ln	E/5	Dove Ln	C/5	Genem Ln	E/1	Kelch Ct	E/4	Mendenhall Ln	D/6	Perrin Ln	C/5-4	Rigel Ln	E/2	Sloop Ct	E/5	Tunstone Ct	B/5		
Arcturus Cr	F/2	Bristol Ct	F/3	Combs Ln	E/5	Dove Ln	C/5	Genem Ln	E/1	Kelch Ct	E/4	Mendenhall Ln	D/6	Perrin Ln	C/5-4	Rigel Ln	E/2	Sloop Ct	E/5	Tunstone Ct	B/5		
Arcturus Cr	F/2	Bristol Ct	F/3	Combs Ln	E/5	Dove Ln	C/5	Genem Ln	E/1	Kelch Ct	E/4	Mendenhall Ln	D/6	Perrin Ln	C/5-4	Rigel Ln	E/2	Sloop Ct	E/5	Tunstone Ct	B/5		
Arcturus Cr	F/2	Bristol Ct	F/3	Combs Ln	E/5	Dove Ln	C/5	Genem Ln	E/1	Kelch Ct	E/4	Mendenhall Ln	D/6	Perrin Ln	C/5-4	Rigel Ln	E/2	Sloop Ct	E/5	Tunstone Ct	B/5		
Arcturus Cr	F/2	Bristol Ct	F/3	Combs Ln	E/5	Dove Ln	C/5	Genem Ln	E/1	Kelch Ct	E/4	Mendenhall Ln	D/6	Perrin Ln	C/5-4	Rigel Ln	E/2	Sloop Ct	E/5	Tunstone Ct	B/5		
Arcturus Cr	F/2	Bristol Ct	F/3	Combs Ln	E/5	Dove Ln	C/5	Genem Ln	E/1	Kelch Ct	E/4	Mendenhall Ln	D/6	Perrin Ln	C/5-4	Rigel Ln	E/2	Sloop Ct	E/5	Tunstone Ct	B/5		
Arcturus Cr	F/2	Bristol Ct	F/3	Combs Ln	E/5	Dove Ln	C/5	Genem Ln	E/1	Kelch Ct	E/4	Mendenhall Ln	D/6	Perrin Ln	C/5-4	Rigel Ln	E/2	Sloop Ct	E/5	Tunstone Ct	B/5		
Arcturus Cr	F/2	Bristol Ct	F/3	Combs Ln	E/5	Dove Ln	C/5	Genem Ln	E/1	Kelch Ct	E/4	Mendenhall Ln	D/6	Perrin Ln	C/5-4	Rigel Ln	E/2	Sloop Ct	E/5	Tunstone Ct	B/5		
Arcturus Cr	F/2	Bristol Ct	F/3	Combs Ln	E/5	Dove Ln	C/5	Genem Ln	E/1	Kelch Ct	E/4	Mendenhall Ln	D/6	Perrin Ln	C/5-4	Rigel Ln	E/2	Sloop Ct	E/5	Tunstone Ct	B/5		
Arcturus Cr	F/2	Bristol Ct	F/3	Combs Ln	E/5	Dove Ln	C/5	Genem Ln	E/1	Kelch Ct	E/4	Mendenhall Ln	D/6	Perrin Ln	C/5-4	Rigel Ln	E/2	Sloop Ct	E/5	Tunstone Ct	B/5		
Arcturus Cr	F/2	Bristol Ct	F/3	Combs Ln	E																		

Let's bring security  
to our offices  
on-the-go.

Find out more at [ibm.com/smart](http://ibm.com/smart)



Let's put  
smart  
to work.™



## ADVERTISER INDEX

Adduci Studios .....	75
Cristina Reddell, EA .....	87
Crowne Plaza † .....	60, 86, 88
TownePlace Suites † .....	3
Hilton Garden Inn .....	76
CuriOdyssey .....	93
Defense Logistic Corp .....	70
Dozo Izekaya .....	86
Elite Properties .....	80
Falafel Tazah .....	72
Foster City Courtyard .....	83
FC Islander .....	89
Foster City Lions .....	79
Foster City Preschool & Day Care .....	85
Foster City Rotary .....	84
Foster City Village .....	74
Gilead † .....	2
Happy Healthy Teeth .....	73
Hillbarn Theatre .....	87
IBM † .....	92
Jenn Selvitella - State Farm .....	77
Julie Flouty .....	83
Law Office of Cathy Rincon .....	70
Law office of Mark Watson .....	69
Legal Documents Plus .....	72
Lennar .....	94
Manatt Phelps & Phillips LLP .....	70
The Manor Association .....	89
Meraki Real Estate .....	82
Ness Backflow & Plumbing .....	81
Penelopes .....	84
Project Build Up /The Big Lift .....	74
Samaritan House .....	79
SMFCSD .....	71
San Mateo Libraries .....	68
Sandwich Monkey .....	60
Science from Scientists .....	71
Signature Realty .....	81
Universal Developing .....	72
Visa † .....	96
Zoox † .....	95

# Touch Science, Meet Animals

at CuriOdyssey's Science  
Playground and Zoo!



Open Tuesday–Sunday  
10am–5pm

CuriOdyssey  
SCIENCE PLAYGROUND & ZOO

650.342.7755 | [www.CuriOdyssey.org](http://www.CuriOdyssey.org)  
1651 Coyote Point Dr. | San Mateo, CA 94401



# Lock, Leave and Enjoy Life!

## LUXURY CONDOS FOR ACTIVE ADULTS

Foster Square is an upscale community with new condominiums for sale in Foster City. Situated within close proximity to Silicon Valley and other areas across the Bay Area, this 55+ community offers a lock-and-leave, low-maintenance lifestyle. Set in a walkable location, residents will be able to enjoy pedestrian access to the community center, local parks, shopping and the lagoon for great recreation. Every home also comes with added value and style thanks to our signature Everything's Included® program, providing you with upgrades and features at no additional cost.

**Come tour the models today!**

## FOSTER | SQUARE



1009 Foster Square Lane #201  
Foster Square, CA 94404  
650-376-7080

**LENNAR®**

Pursuant to the Fair Housing Act, this housing is intended for occupancy by at least one person 55 years of age or older per home. Features, amenities, floorplans, elevations, square footage and designs vary and are subject to changes or substitution without notice. Models/lifestyle photos do not reflect racial or ethnic preference. Please see your New Home Consultant and home purchase agreement for actual features designated as an Everything's Included feature, additional information, disclosures, and disclaimers relating to your home and its features. Visit Lennar.com or see a Lennar New Home Consultant for further details and important legal disclaimers. This is not an offer in states where prior registration is required. Void where prohibited by law. Copyright © 2019 Lennar Corporation. All rights reserved. Lennar, the Lennar logo, Everything's Included, and the Everything's Included logo are U.S. registered service marks or service marks of Lennar Corporation and/or its subsidiaries. CalAtlantic Group, Inc., CA BRE Broker #02058246 (Responsible Broker: Joanna Duke), Lennar Sales Corp., CA BRE Broker #01252753 (Responsible Broker: Joanna Duke), BMR Construction, Inc., CA CSLB #830955, CalAtlantic Group, Inc., CA CSLB #1037780, Lennar Homes of California, Inc., CA CSLB #728102. 10/19



PROUD TO CALL  
FOSTER CITY  
HOME.

**ZOOX**  
zoox.com





Visa is proud to support the hard work, creativity,  
and passion of small businesses in Foster City  
and the Bay Area.

**VISA** everywhere  
you want to be