







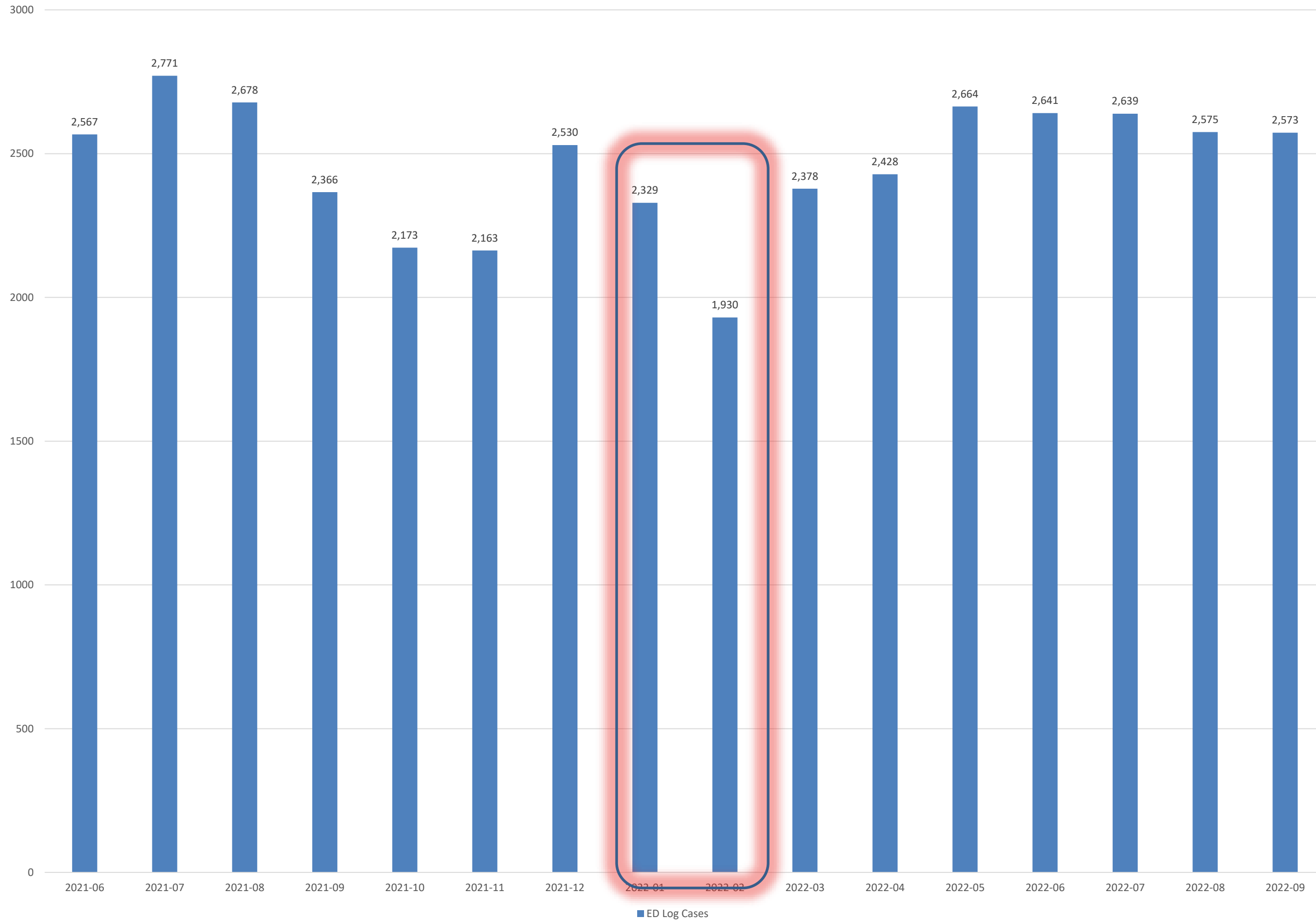
Randolph Health  
Outpatient  
Center

# DATA TRENDS



ED volume is up 2.9% in 2022

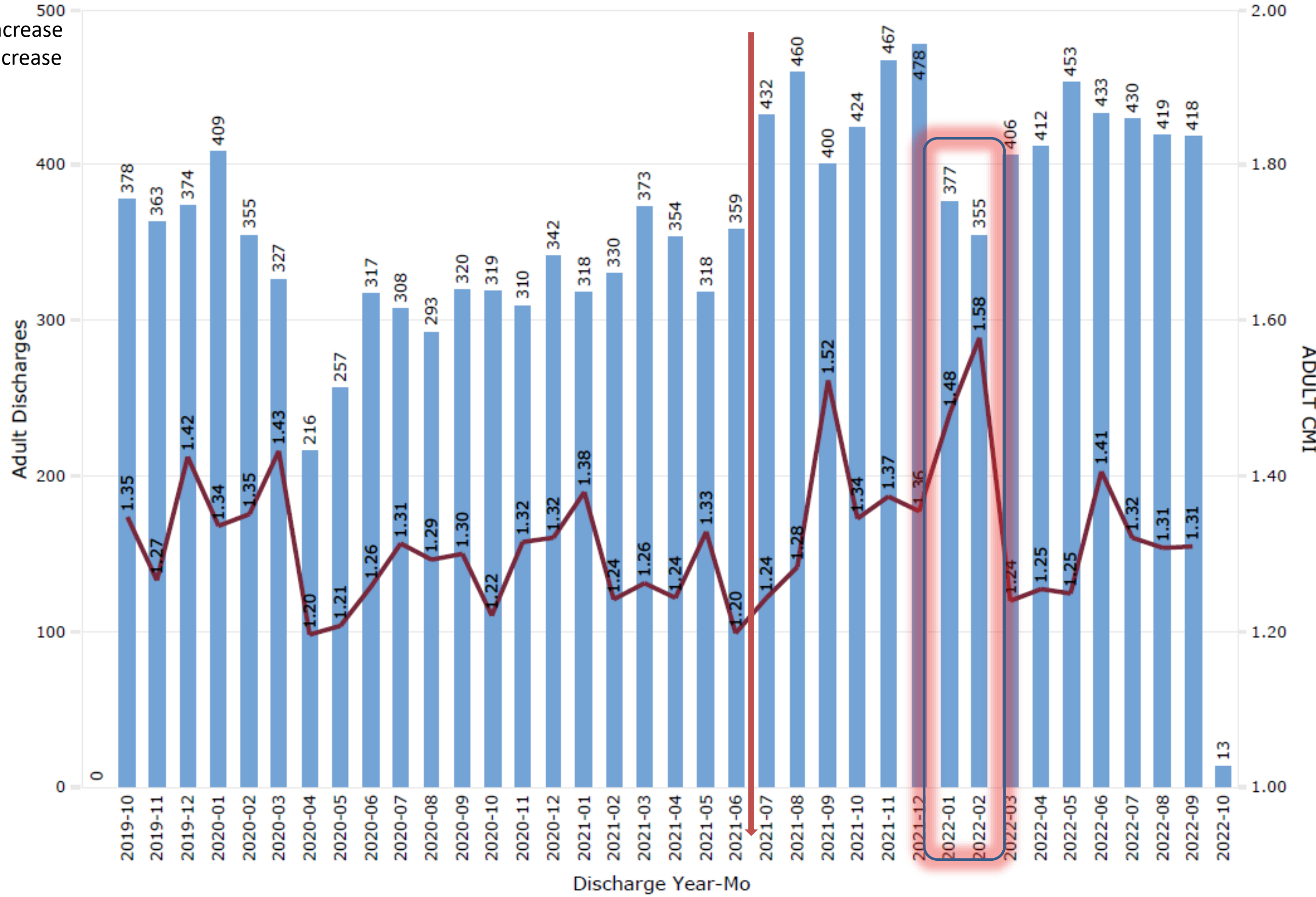
ED VISITS by MONTH



### Discharge per Mo and CMI Trend

■ (L) Adult Discharges ■ (R) ADULT CMI

Discharge Trend  
 2021 vs 2020 21.4% increase  
 2022 vs 2021 7.8% increase  
 (calendar year)

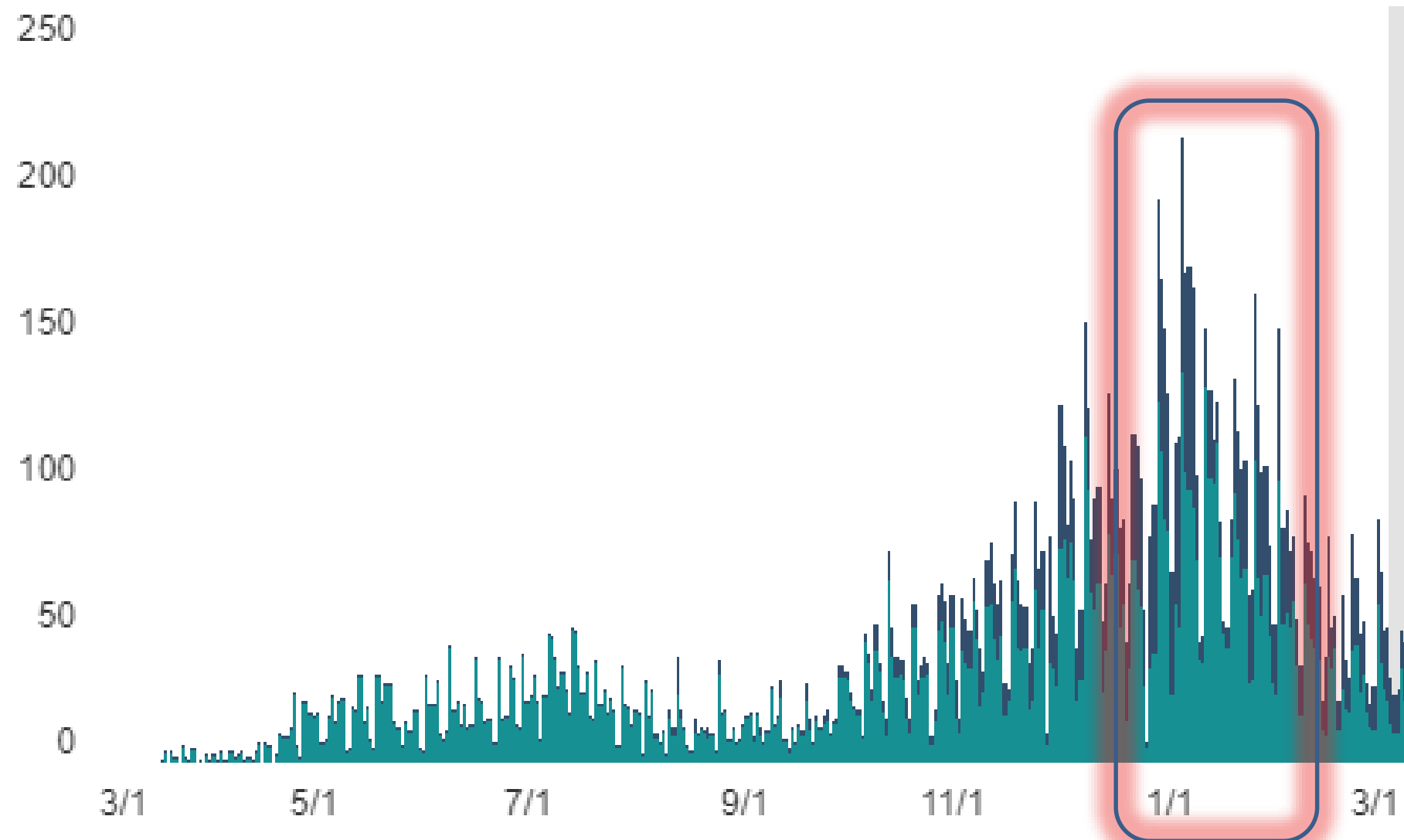


## Cases and Deaths by Date

Select County:

Randolph County

### Cases by Date of Specimen Collection - Randolph County



**TOTAL CASES**  
Randolph County

**13,854**

**MOLECULAR (PCR)  
POSITIVE CASES**

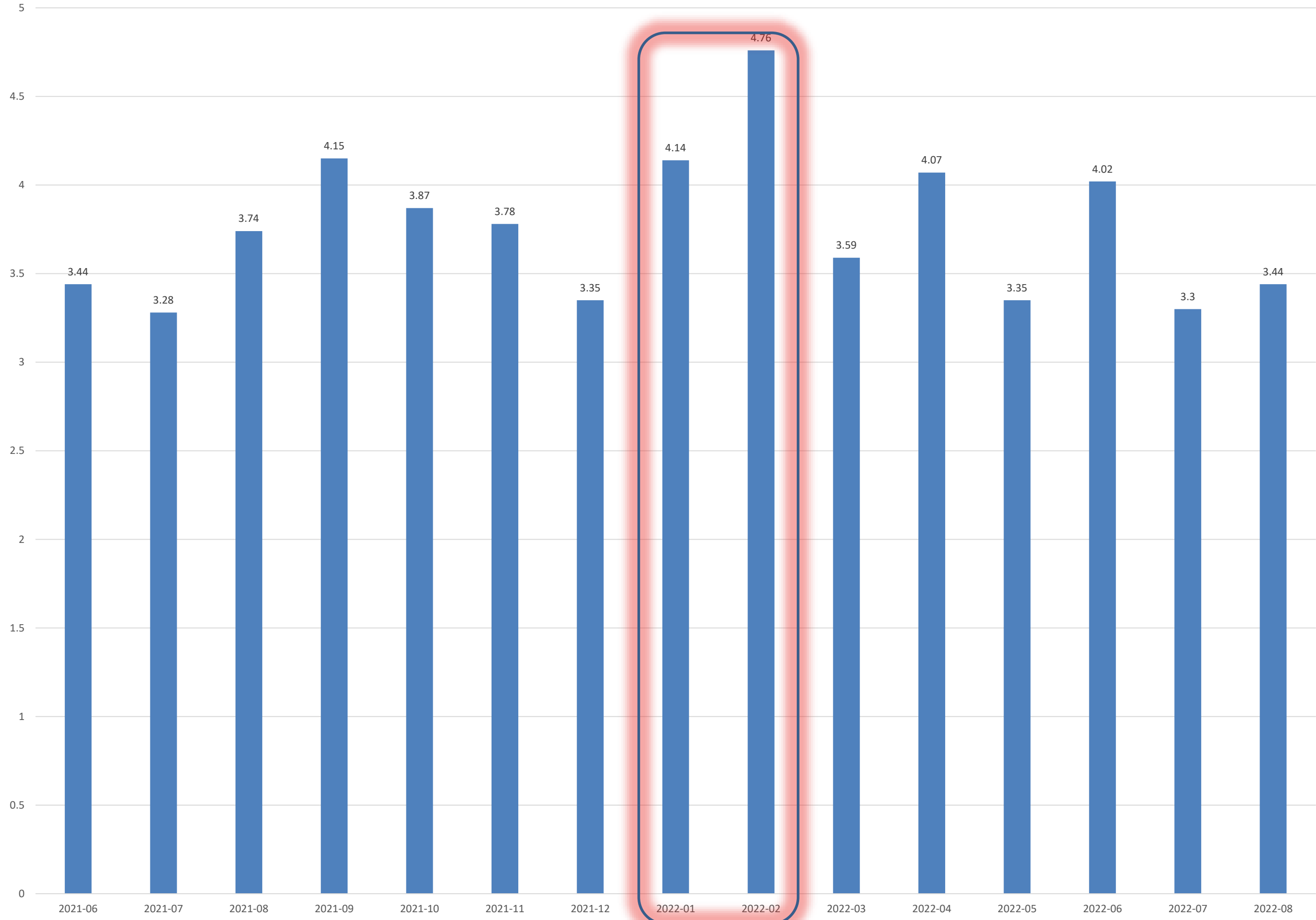
**9,926**

**ANTIGEN POSITIVE  
CASES**

**3,928**

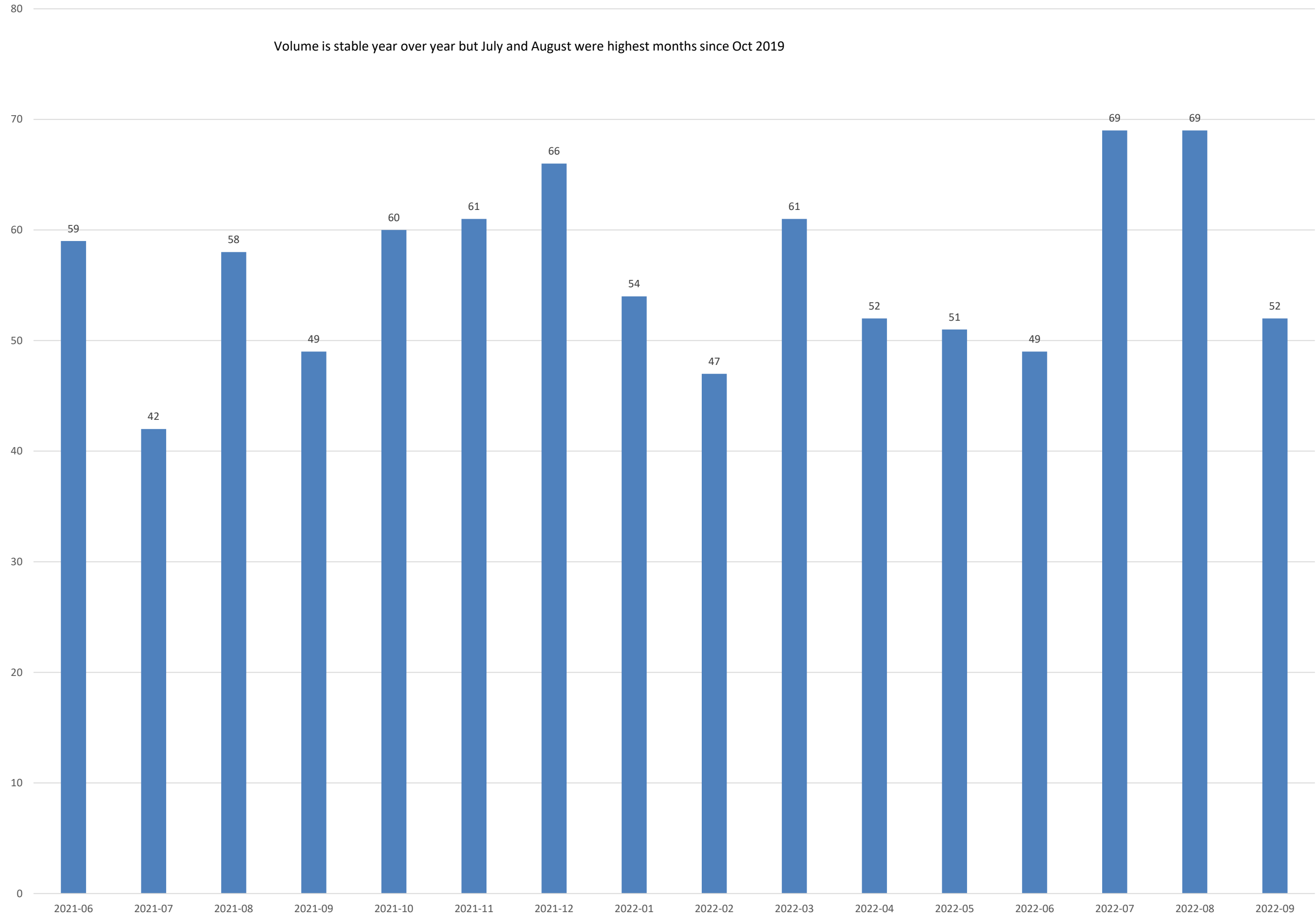
Specimen collection date  
missing for 5 cases.

Average Acute Length of Stay (excludes Newborns)



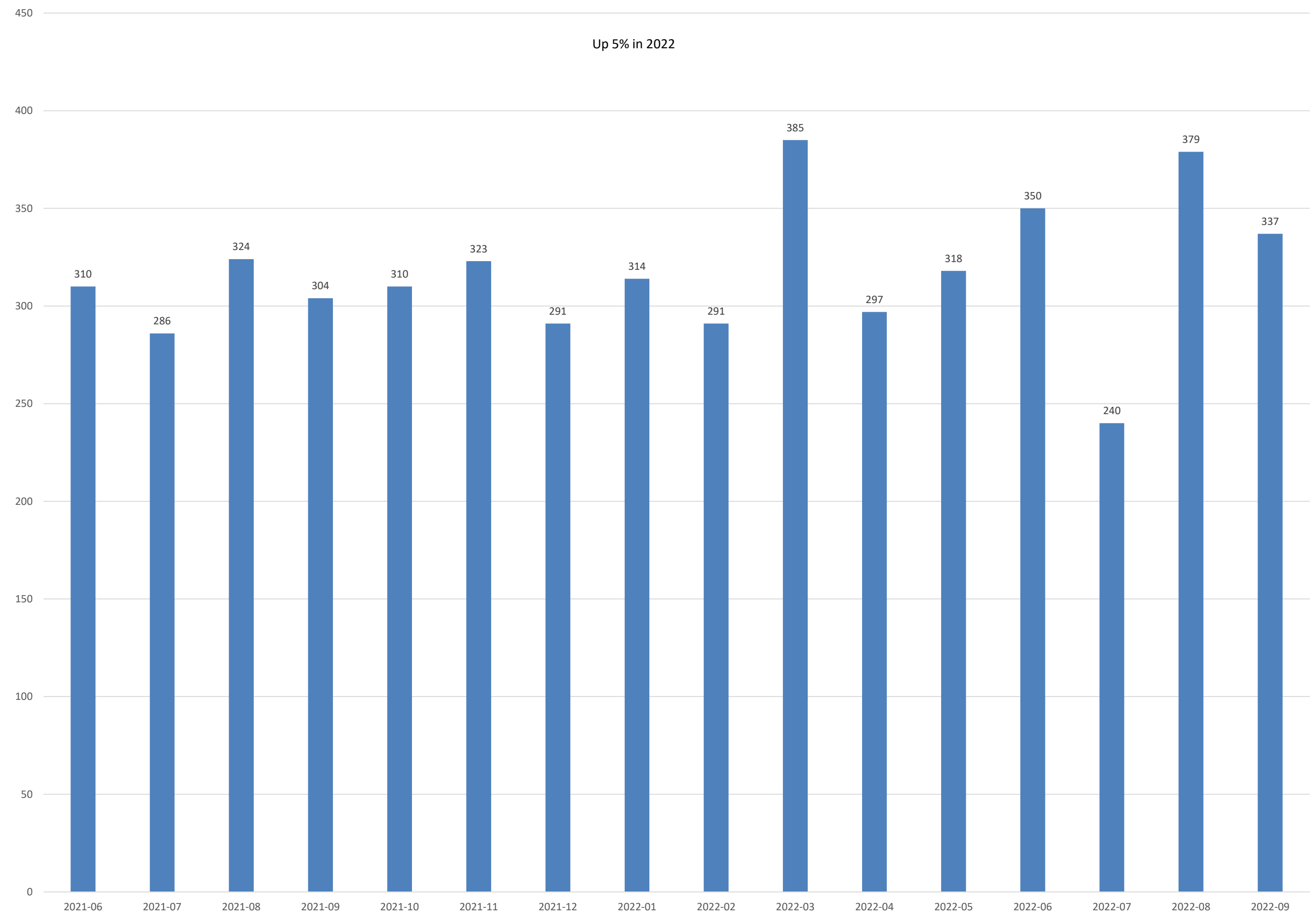
# Deliveries

Volume is stable year over year but July and August were highest months since Oct 2019



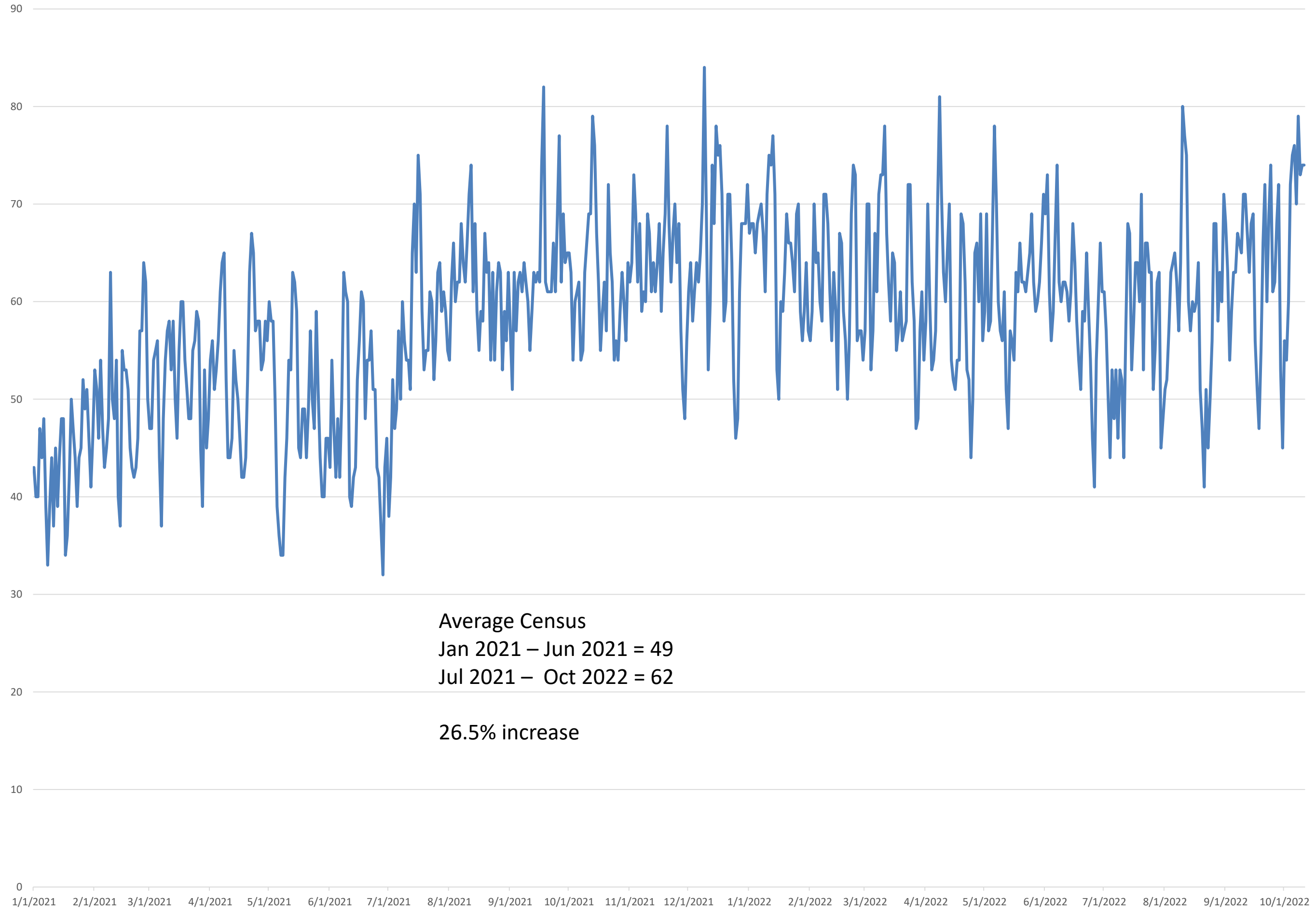
# Total Surgical Cases

Up 5% in 2022





# Midnight Census by Date





○ ○ ○ ○

# FUTURE PLANS

- CT Angiography
- Wound Care Program
- 2nd/3rd Floor Renovations
- Evaluate Behavioral Health Facility
- In-Patient Dialysis/Nephrology Consultation
- Cardiology Upgrades
- Equipment Upgrades
- Re-negotiate Managed Medicare & Medicaid Plans
- Medicaid Expansion







# *THANK YOU*

