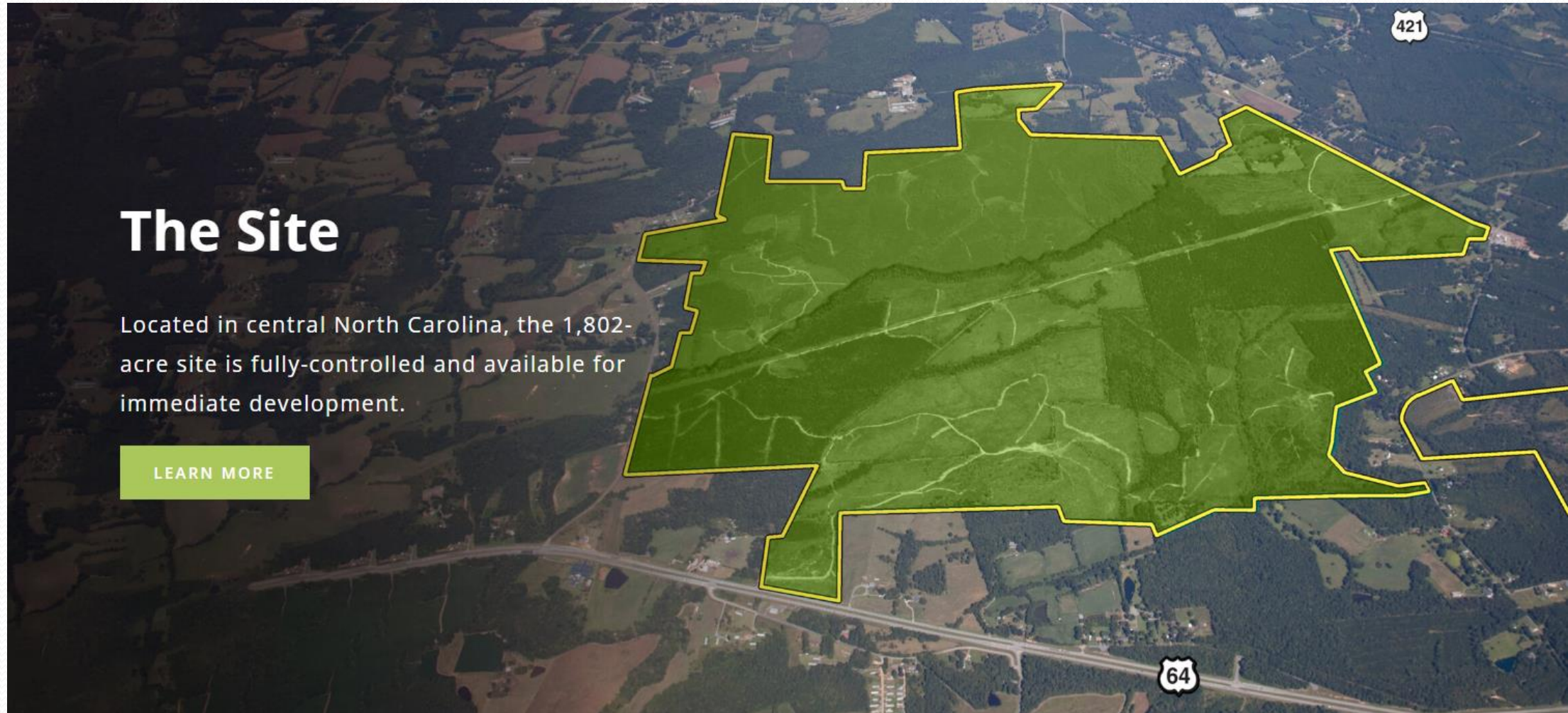


Chatham Advanced Manufacturing Site

The Site

Located in central North Carolina, the 1,802-acre site is fully-controlled and available for immediate development.

[LEARN MORE](#)



Project Wolfspeed Update

- Wolfspeed (EDC Project Hibernian) – Large Semiconductor Plant
- Silicon carbide manufacturer
- Clean energy economy – electric vehicle process
- 1800 jobs by 2030
- \$5 Billion investment over 8 years
- Phase 1 is a foundry – lots of cooling water

Project Wolfspeed Update

- The state budget includes funding for public utilities to facilitate a potential project at CAM
- Randolph County EDC approached the City of Asheboro to consider a waterline extension
- A combination of utility service providers can supply the CAM Site in the event a project of this significance is landed

Project Wolfspeed Update

- Working with NCDEQ
- North Carolina government is providing \$125 million for project
- \$70 million for site prep
- \$55 million for utilities – City of Asheboro gets bulk of funds
- Siler City gets \$4-5 million for sewer upgrades for this project
- Asheboro will distribute funds for water line



Project Wolfspeed Update

<u>Year</u>	<u>Water Flow (GPD)</u>
2024	420,000
2025	840,000
2026	1.25
2027	1.67
2028	2.51
2029	3.34

- Siler City can meet needs temporarily
- Sewer Treatment Capacity is a much greater challenge

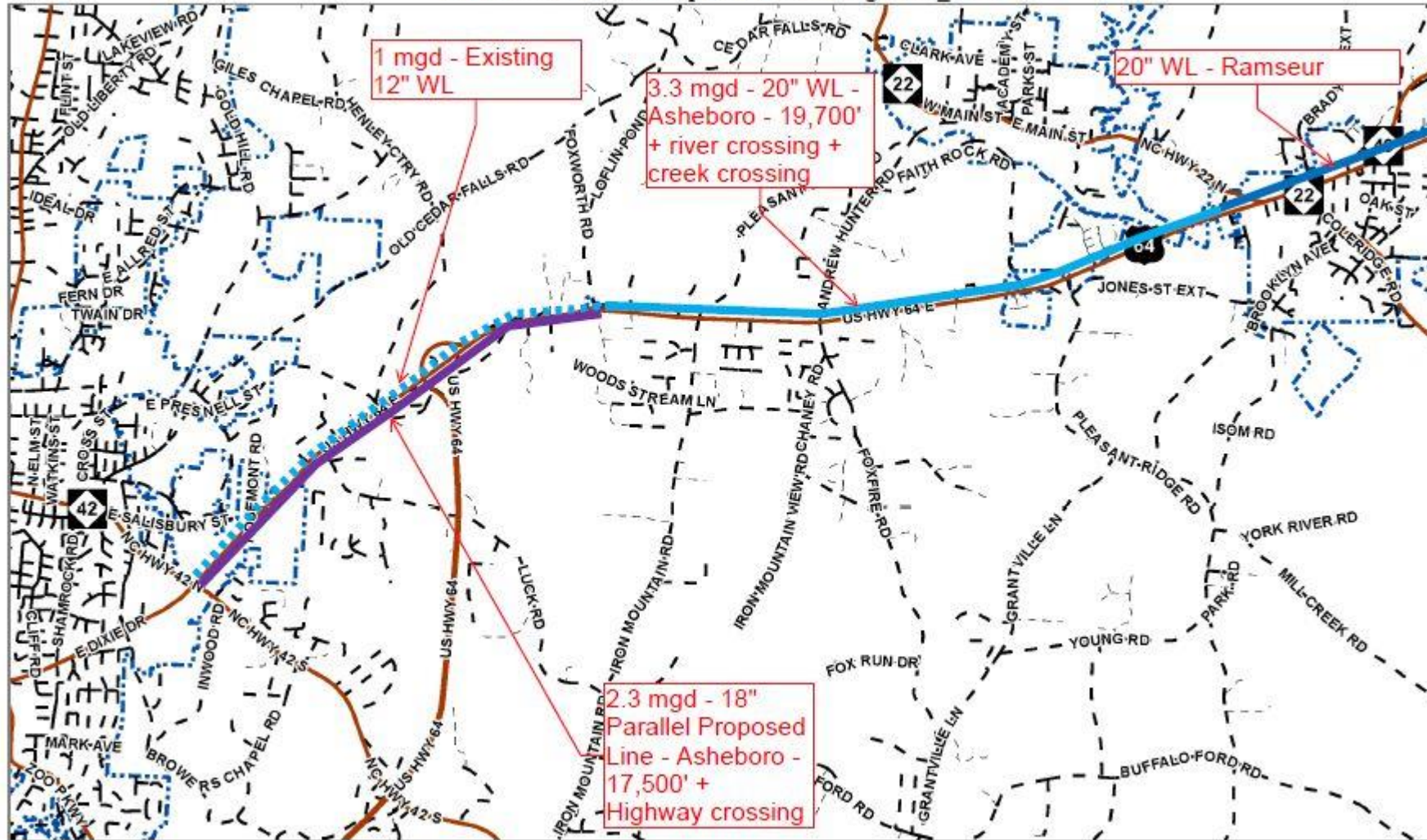
Project Wolfspeed Update



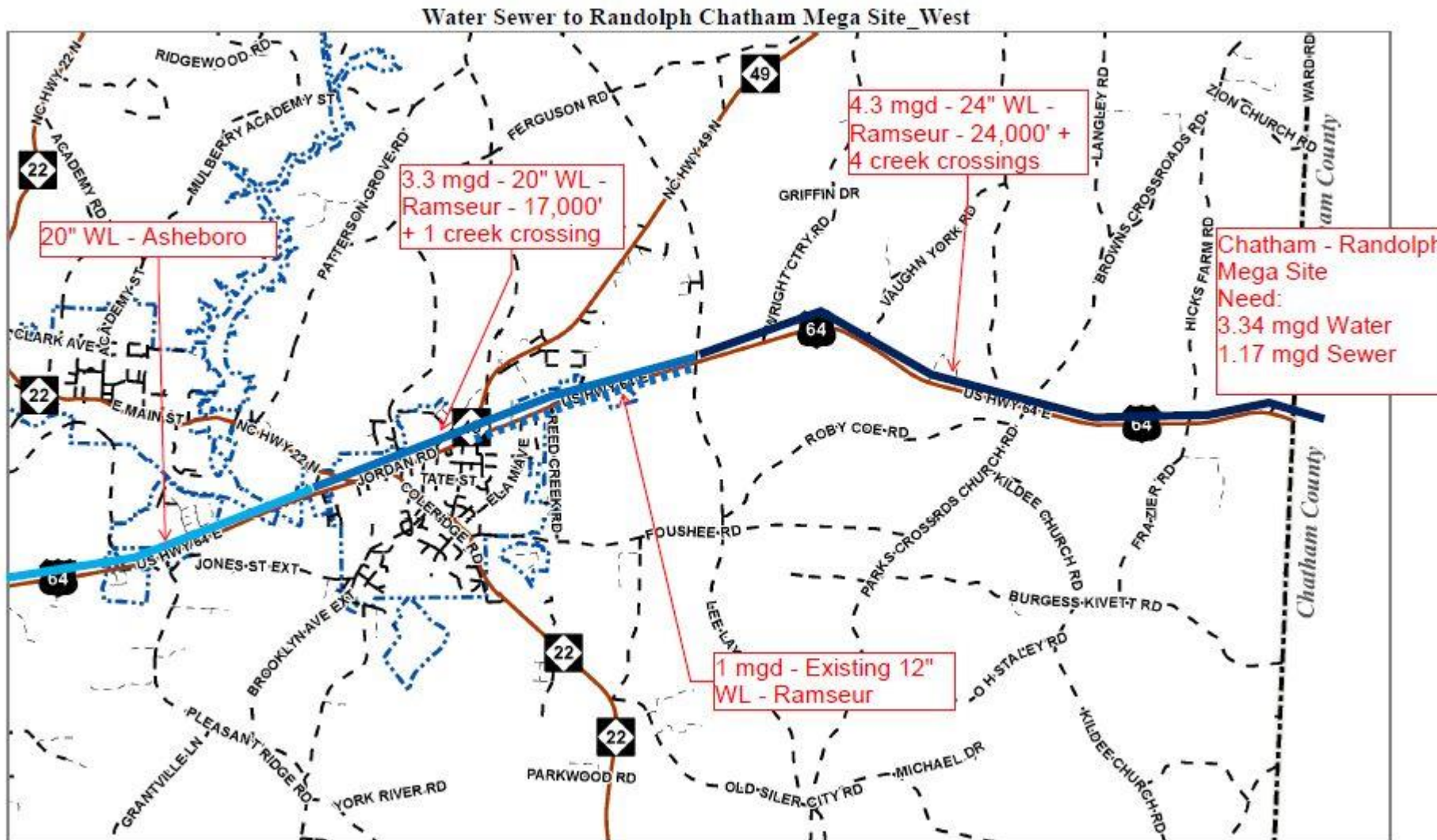
- Asheboro has contracted with Piedmont Triad Regional Council to provide:
 - Technical Assistance
 - Coordinate with other jurisdictions and partners, including other utility providers and Randolph County – Possibly establish Eastern Randolph Water Authority
 - Formulate & establish strategic plan
 - Establish the necessary development agreements
 - Work with Engineering Consultant(s)

Project Wolfspeed Update

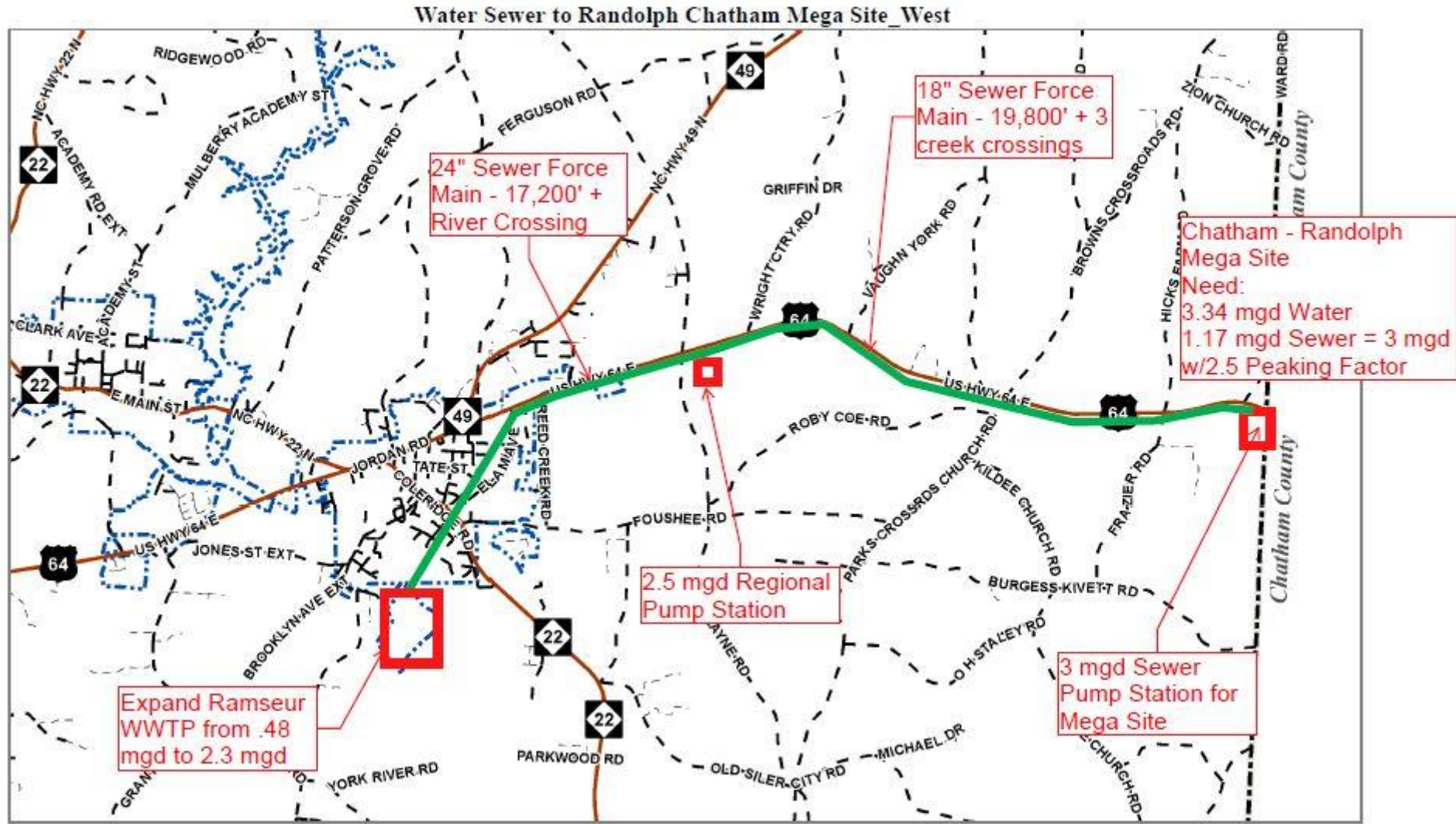
Water Sewer to Randolph Chatham Mega Site_ West



Project Wolfspeed Update



Project Wolfspeed Update



Project I-74 Industrial Park Update



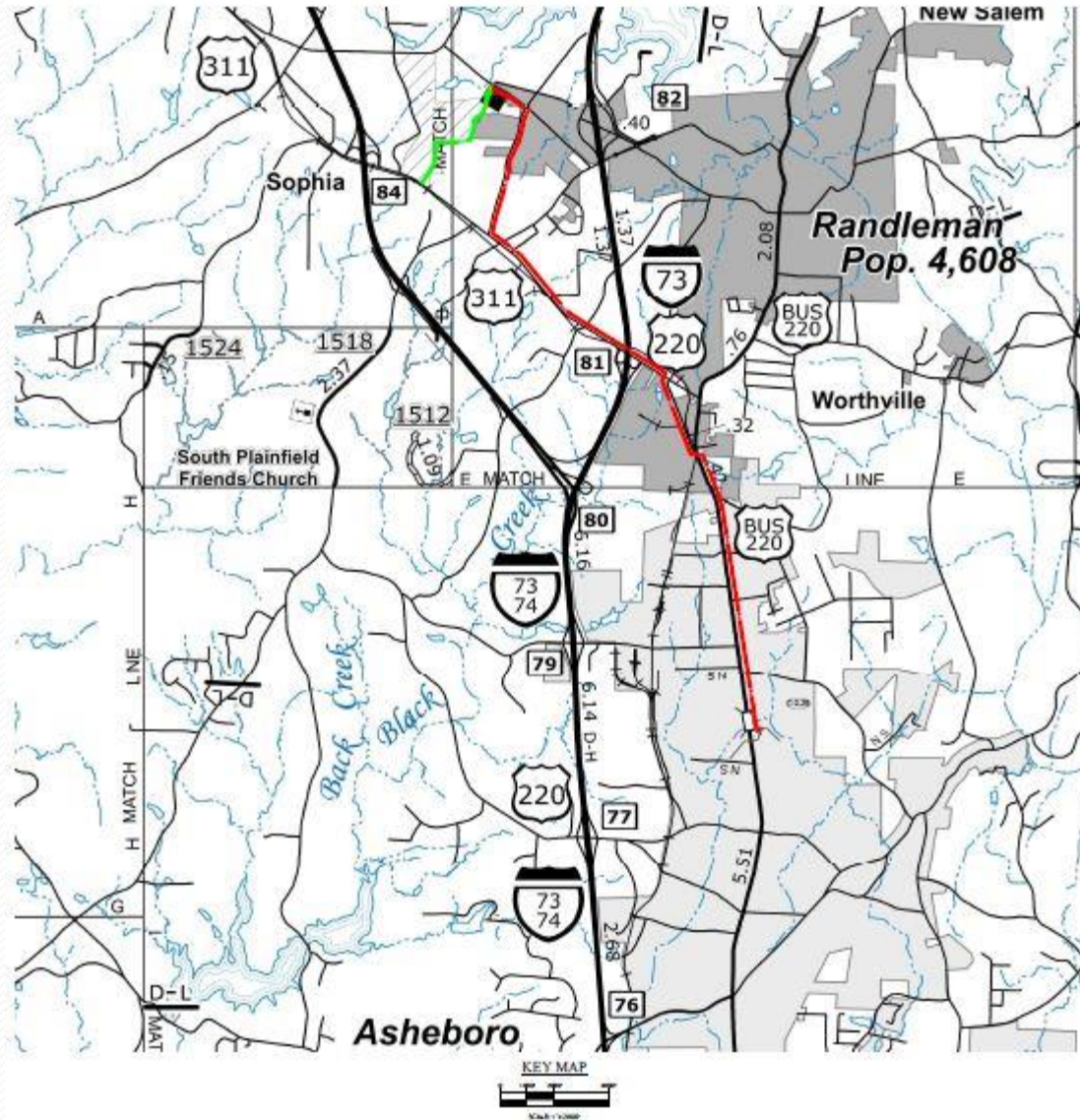
- Wall Family property at intersection of I-74 and Hwy 311
- Approximately 160 acres for industrial development
- Samet Corporation is representing family with the EDC
- Randleman is unable to provide sewer but will provide water through PTRWA

Project I-74 Industrial Park Update

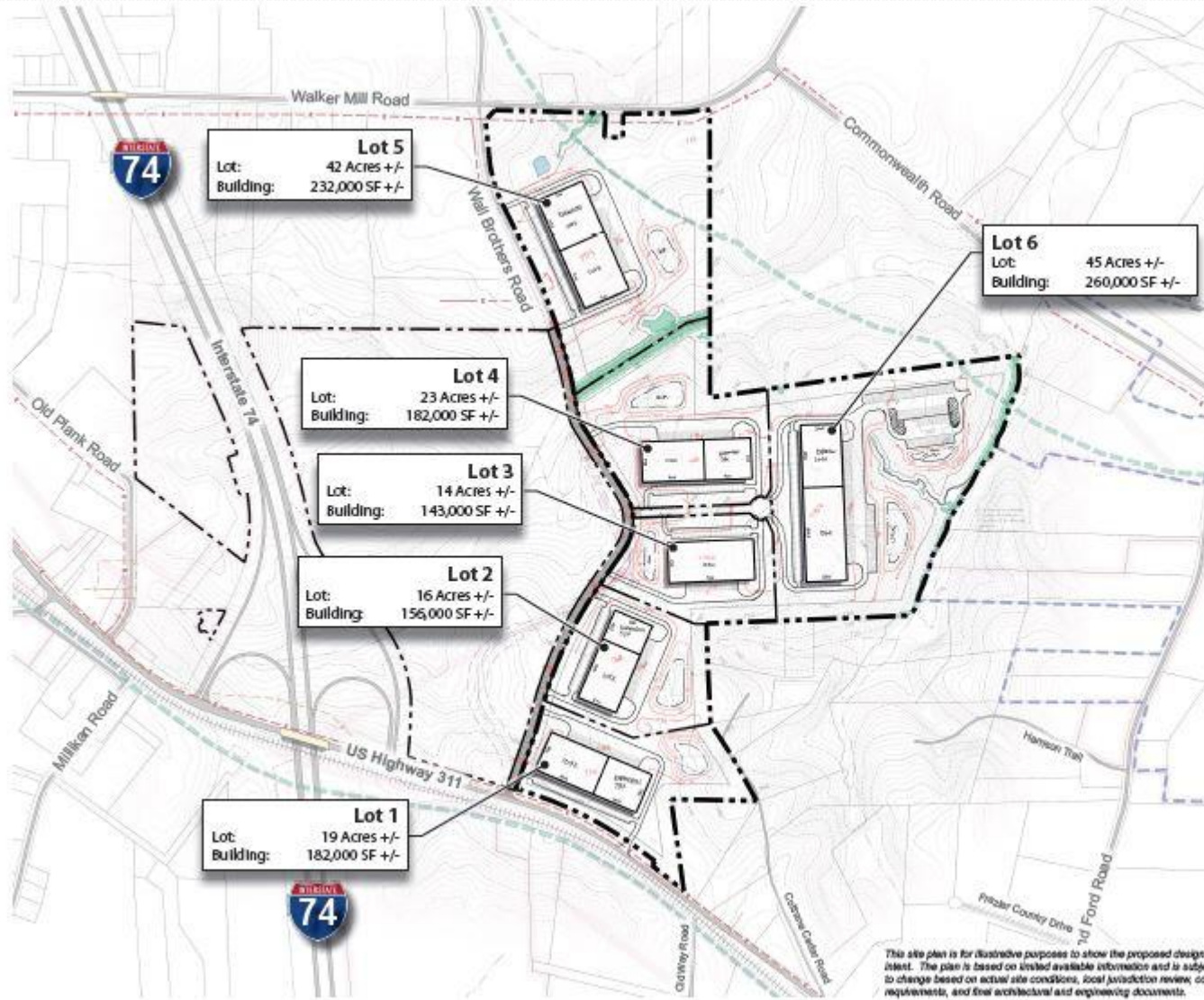


- Randolph County is financing sewer improvements
- Asheboro will take ownership and operation of sanitary sewer lift station
- Randleman will take over ownership and operation of gravity sewer system
- Samet will build spec building for industrial use

Project I-74 Industrial Park Update



Project I-74 Industrial Park Update



Preliminary Concept 1

Total Lots:	6 Lots
Total Building:	1,155,000 sf +/-
Total Lot Acreage:	159 Ac +/-
Common Area:	0 Ac +/-
Road Right-of-Way:	1 Ac +/-
Total Acreage:	160 Ac +/-

SITE DATA

Jurisdiction:
City of Randleman ETJ
Randolph County, NC

Zoning:
Existing: R-1
Proposed: I-1 / I-2

Watershed:
The site is located within the Randleman Lake WS-IV water supply watershed district.

Site Acreage:
Wall Industrial Site: 160 AC +/-
(Per digital Randolph County GIS data)

This site plan was modeled as part of Duke Energy's Site Remediation Program 

Wall Site

Randolph County, NC 05/15/2021

Concept 1

Prepared for:
 **DRAFT**
05.28.2021

Project #: 21-057

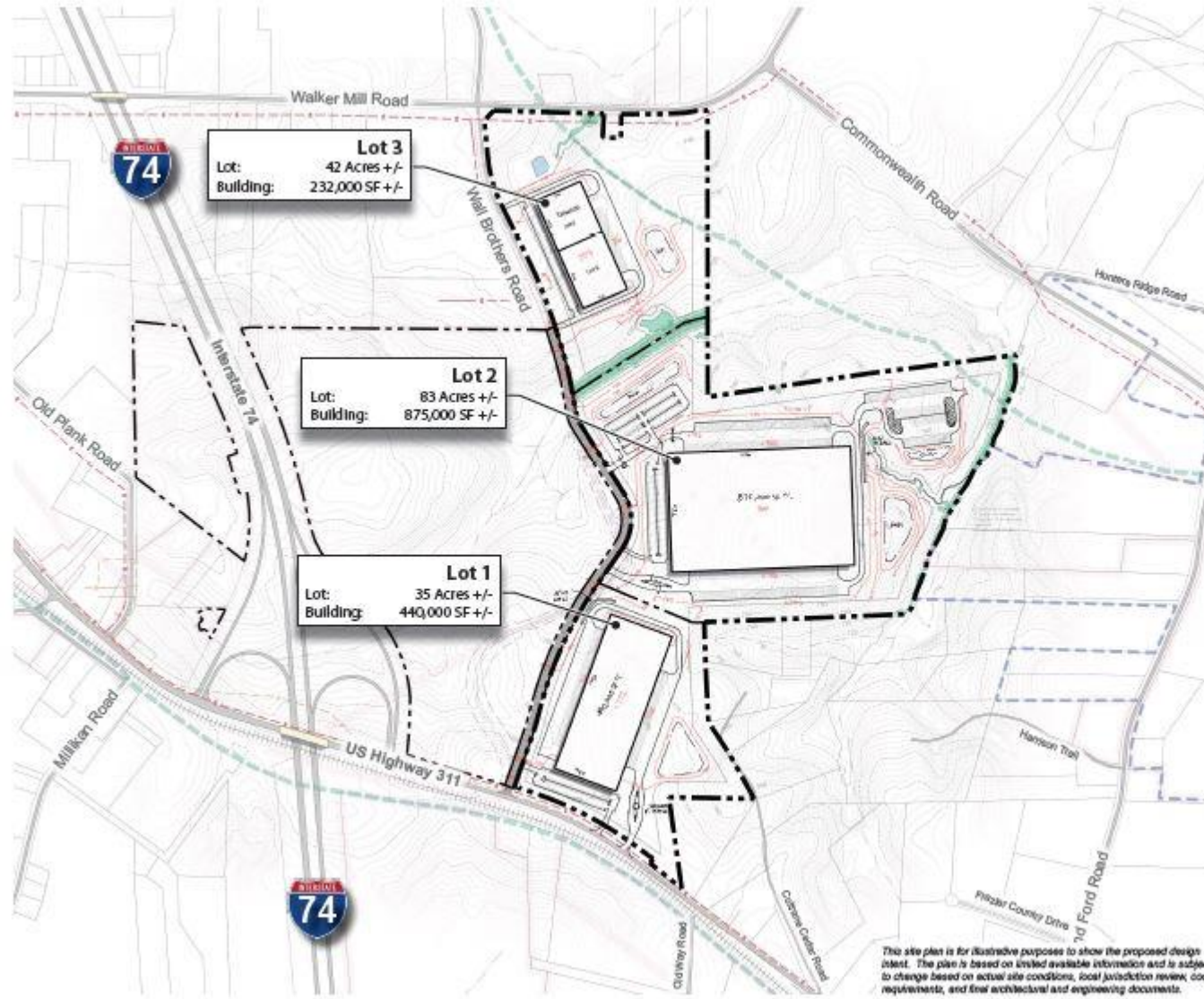
Prepared by:

 **LANDSCAPE ARCHITECTURE
CIVIL ENGINEERING
LAND PLANNING**
901 N. TOWN CENTER DRIVE, SUITE 300
WILSON, NC 27604
www.stimmel.com 252.722.1957



This site plan is for illustrative purposes to show the proposed design intent. The plan is based on limited available information and is subject to change based on actual site conditions, local jurisdiction review, code requirements, and final architectural and engineering documents.

Project I-74 Industrial Park Update



Preliminary Concept 2

Total Lots:	3 Lots
Total Building:	1,547,000 sf +/-
Total Lot Acreage:	160 Ac. +/-
Common Area:	0 Ac. +/-
Road Right-of-Way:	0 Ac. +/-
Total Acreage:	160 Ac. +/-

SITE DATA

Jurisdiction:
City of Randleman ETJ
Randolph County, NC

Zoning:
Existing: R-1
Proposed: I-1/I-2

Watershed:
The site is located within the Randleman Lake WS-IV water supply watershed district.

Site Acreage:
Wall Industrial Site: 160 AC +/-
(Per digital Randolph County GIS data)

This site plan was developed as a part of
Duke Energy's Site Readiness Program



Wall Site

Randolph County, NC 06/15/2021

Concept 2

Prepared for:
 **DRAFT**
05.28.2021

Project #: 21-057

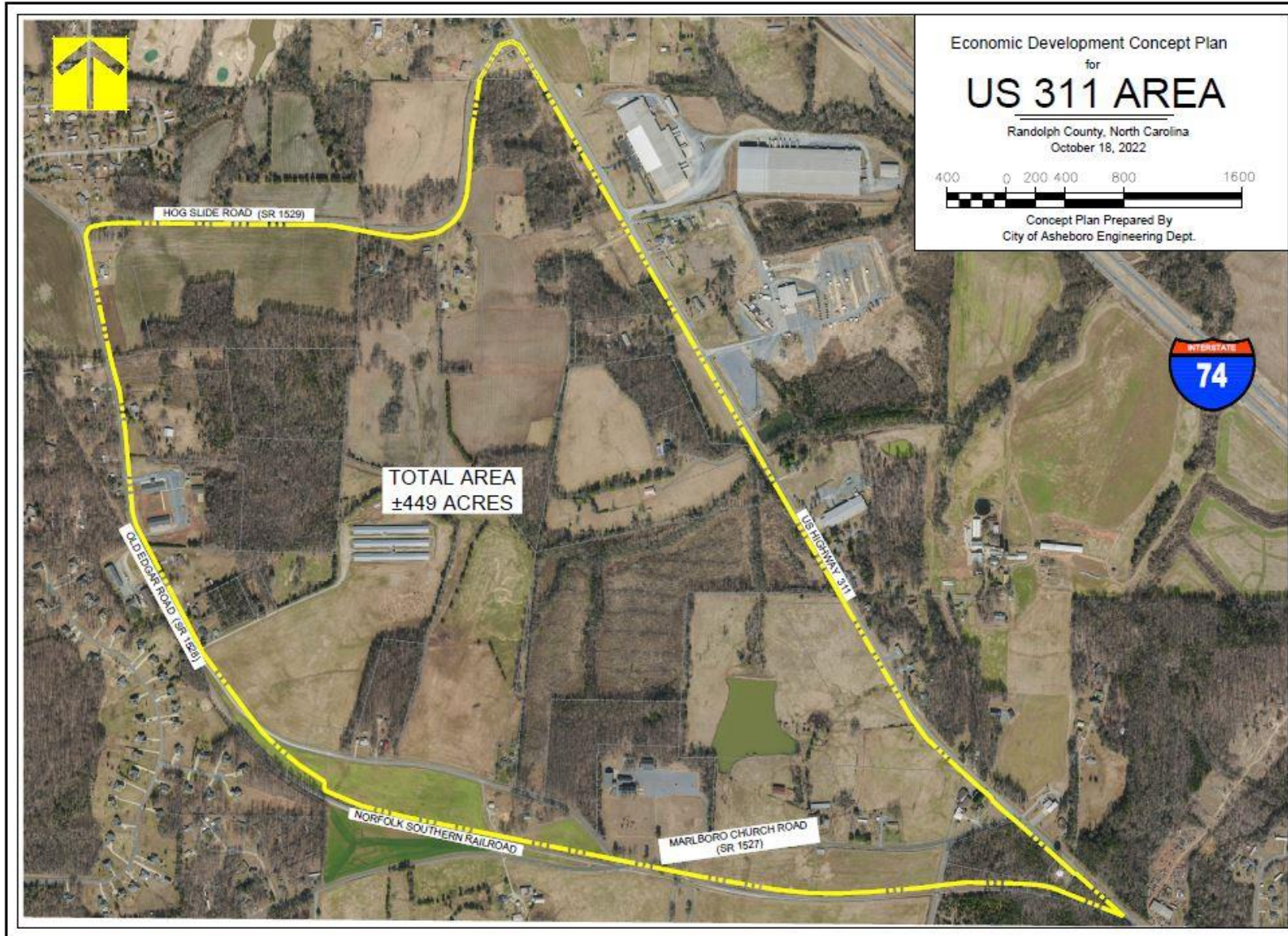
Prepared by:

 **LANDSCAPE ARCHITECTURE
CIVIL ENGINEERING
LAND PLANNING**
5111 N. TRAVIS STREET, SUITE 200
WILSON, NC 27604
www.stimmel.com 336.722.1067



This site plan is for illustrative purposes to show the proposed design intent. The plan is based on limited available information and is subject to change based on actual site conditions, local jurisdiction review, code requirements, and final architectural and engineering documents.

Project I-74 Industrial Park Update



Project I-74 Industrial Park Update

