

2020 CANYON COUNTY PARADE OF HOMES



MIKE MOIR (208) 850-7495



June 13th – June 21st
M-F 5-8pm | Sat 12-8pm | Sun 12-6pm

LAVA SPRINGS

Lava Springs is more than a subdivision, it is a premier community. Your new custom quality home at Lava Springs will fit your lifestyle, while being surrounded by beautiful, natural common areas. You will be able to fulfill your dream of owning a custom home at a reasonable price.



MORE THAN A SUBDIVISION

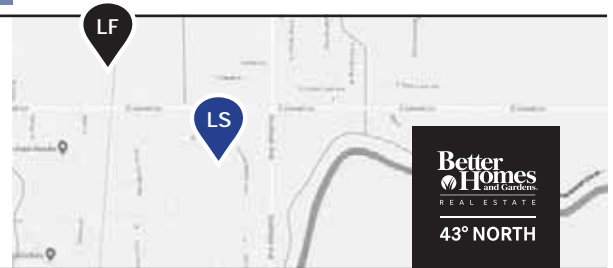
- On-Site Charter School
- Large Parks & Playground
- Community Pool
- Lush Landscaping
- Walking Paths
- Direct Greenbelt Access

www.LavaSprings-Idaho.com



LISA J. CUNNINGHAM
New Construction Specialist, REALTOR®
208.562.7887
lisajcunningham@43re.com

SHAUN URWIN
New Construction Specialist, REALTOR®
208.989.4811
shaun@43re.com



Lava Falls

Lava Falls is a new community located right across the street from Lava Springs, off of E. Locust Ln. and Southside Blvd. Beautiful Hathaway Homes with RV garages and a Dog Park will allow you to enjoy the life you've always dreamed of!



NEW COMMUNITY COMING SOON

www.LavaFallsNampa.com



Welcome to the Snake River Valley Building Contractors Association 2020 Canyon County Parade of Homes

As chairs of this year's Canyon County Parade of Homes, with everything that we have all been challenged with, we are so very proud to have the opportunity to present to you 23 beautiful homes built by builders of the Snake River Valley BCA.

A few changes have been made in order to provide you with the opportunity to physically visit each home this year and we ask that you kindly respect each home, the safety of the tourists and of yourself by following the rules provided at each parade home and respectfully comply to the lists below prior to entering each home.



Mercedes Mascorro
Snake River Valley BCA
Executive Officer

- 1. Please be sure to enter homes only with booties**
- 2. We encourage face masks and gloves**
- 3. Hand sanitizer is provided at the entry of each home**
- 4. Enter through the front door and exit through the garage**
- 5. Be vigilant of spacing between individuals**



Randy Neary
Solid Rock Homes



Sallie Bradshaw
Bradshaw Construction

We have also added the option to view the homes virtually for your convenience.

On the front of the POH Magazine you can scan the QR Code by Mobile Device, which will take you to our 2020 Canyon County Parade of Homes Site to view the homes via virtual tour. You will also be able to navigate by map, your way, to each of the home sites. And as always you can view the magazine and get our virtual tour by going to our website www.srvbca.com

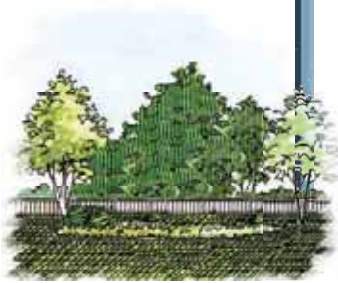
We want to take a minute to thank all of our members for their support and patience through these times, our industry has been affected by what is happening and together we continue to provide our communities with beautiful homes.

Watch for this year's Parade Winners on our website www.srvbca.com after June 12th.

As always we hope that you enjoy our parade of homes and that we can continue to provide you with beautiful homes each year.

2020 POH Chairs,
Randy Neary, Solid Rock Homes
& Sallie Bradshaw, Bradshaw Construction

Index of HOMES




Architectural renderings provided by

Randy Haverfield
Architecture NW P.A.

Cover Home by Epic Realty

1	"Blackstone" by Blackstone Homes 15089 Pronghorn Drive, Caldwell	7
2	"The Hartfield" by Waltman Homes 15065 Pronghorn Drive, Caldwell	10
3	"The Sunshadow" by Bradshaw Construction 14939 Red Barn Court, Caldwell	11
4	"The Norseman" by Heinz Built Homes 455 Valhalla Street, Middleton	14
5	"The Covington" by Heinz Built Homes 544 Valhalla Street, Middleton	16
6	"The Lakeview" by Brighton Homes 18259 Hush Creek Way, Nampa	17
7	"The Galena" by Alturas Homes 18272 Hush Creek Way, Nampa	19
8	"The Andrew" by Coleman Homes a Toll Brothers Co. 17340 N. Halls Crossing Street, Nampa	21
9	"The Expanse" by Prominent Homes 7520 E. Kyle Drive, Nampa	23
10	"The Monarch" by Cotner Building Co. 327 S. Knightsbridge Lane, Nampa	25
11	"The Bungalow" by Larry Richardson Construction 7400 E. Kyle Drive, Nampa	28
12	"The Mackinaw" by Hathaway Homes 4044 S. Scoria Way, Nampa	30
13	"The Monroe" by Kingstud Construction 9959 Hamby Way, Nampa	36
14	"The Christine" by Brookstone Custom Homes 1372 W. Capstone Drive, Nampa	38
15	"The Sonoma" by Berkeley Building Co. 1373 W. Capstone Drive, Nampa	40
16	"The Galloway" by Tresidio Homes 1374 W. Tenzing Street, Nampa	41
17	"The Taylor" by Hunter Homes 1395 W. Tenzing Street, Nampa	43
18	"The Rilyn" by Gingrich Homes 13266 S. Grace Point Way, Nampa	46
19	"The Griffen" by Trident Homes 11700 W. Alyxandra Drive, Nampa	49
20	"The Hemlock" by Hunter Homes 11684 W. Dustin John Drive, Nampa	52
21	"The Ava Jean" by Jayo Construction 15364 Flora Springs Way, Caldwell	56
22	"Teton Peak" by Tamarack Construction 4619 Gap Creek Avenue, Caldwell	59
23	"The Jack" by JBI Elemental 2217 Sunset Avenue, Caldwell	61



Warmth & comfort the *whole family* will love.

Dancing for joy comes standard on all homes featuring energy efficient, natural gas.



When you choose natural gas, you're getting safe and reliable energy now that is leading the way to a bright future.

Experience the comfort and quality of natural gas by visiting our ENERGY STAR® Certified homes during the SRVBCA Parade of Homes. Get a list of homes by scanning the QR code to the left with your mobile device. Learn more about Energy STAR® Certified homes and available appliance rebates at www.intgas.com/saveenergy.



www.intgas.com



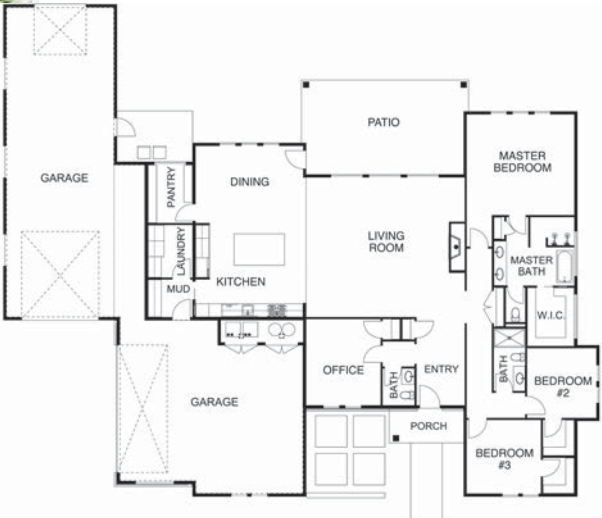
1



"Blackstone"
15089 Pronghorn Drive Caldwell, ID
By Blackstone Homes

Introducing "Blackstone" by Blackstone Homes. This Modern Scandinavian Farmhouse was specifically designed to impact boldness, with the cleanliness of simple lines. This home embodies wide open space with its oversized Great Room, wide hallways, stunning vaulted ceilings, large 2 car Garage, and a 49 foot RV bay. You will love the natural wood tones, beam and trim work, and the black and white color pallet featured inside and out. Come see why this regal structure stands out and all the fresh flare that comes with it.

- Builder** Charlie Walk, 208-800-1615
- Subdivision** Purple Sage Estates
- Developer** Hess Properties
- Realtor** Chade Leavitt 208-409-5006
Berkshire Hathaway Silverhawk Realty
2,818 Sq. Ft.



INSTANT INFO
 TEXT TO: **88000** MSG: **SRV1**
Powered by divvytech.com




BLACKSTONE HOMES

BLACKSTONEIDAHO.COM | @BLACKSTONEIDAHO



RCE-53440

LUXURY COLLECTION

BERKSHIRE HATHAWAY | Silverhawk Realty | **CHADE LEAVITT** REALTOR® 208.409.5006
 HomeServices

A member of the franchise system of BHH Affiliates, LLC



STONE LUMBER IS NOW SUNPRO

New Name. Same Values. Keep Building.

Sunpro along with our sister company Sunroc are excited and ready to serve builders in the Treasure Valley area.

**Lumber • Building Materials • Windows • Doors • Hardware
Paint • Power Tools • Hand Tools • Lawn & Garden • Much More!**

412 2ND ST S, NAMPA, ID 83651 | (208) 466-2463 | WWW.SUNPRO.BUILD



Solar Thermal Saves Dollars And Makes *SENSE!*

See Our Work In
The Parade Of Homes
April 17th 2020!

Solar Thermal Radiant Floor Heating And Cooling

This 3,200 Sq Ft Home in Nampa, Idaho
Spends less than \$200 per year on energy costs.
The net cost of the system installed was \$16k!

Building? Ready To Start Saving?

Please Call Us For a FREE Solar Site Visit!



Renewable
ENERGY
Northwest LLC

Call 208-577-6537

www.RenewableEnergyNWLLC.com



First homes, dream homes, forever homes—we make it happen.

Get into your home with Idaho's #1 mortgage lender*

Idaho Central Credit Union offers home loans designed specifically to meet your needs. Whether you're looking for a construction loan on a new home or are looking for a mortgage on a dream home, Idaho Central offers quick, local decisions—complete with local underwriting and local servicing. We save you time and money with fast approvals and low fees. Last year, we helped 7,788 Idahoans obtain the home of their dreams.

Mortgage Loans

- Portfolio lending
- Local Servicing: we service most of our loans
- Low fees: saving you money
- Multiple terms available - 10, 15, 20, and 30 years
- Fast Closings: most loans close within 30 days

Construction Loans

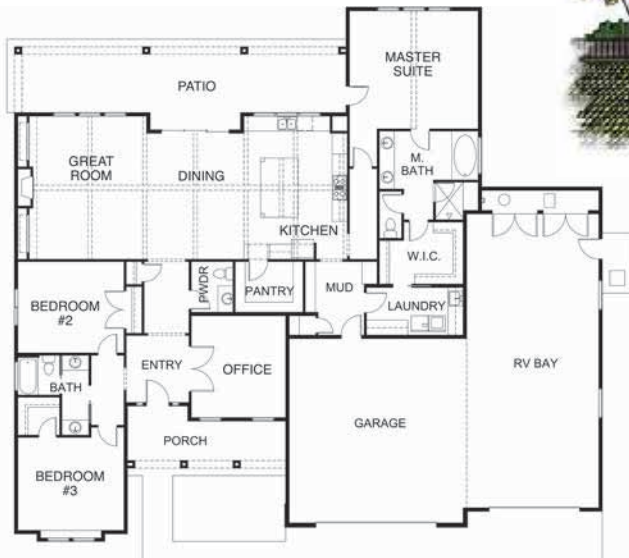
- Construction loans with up to 95% loan-to-value (LTV) financing
- Build times up to 18 months
- One-time and two-time close options
- Fixed Interest Rates
- Interest-only payments during construction

Apply online at [ICCU.COM](https://www.iccu.com), or stop by your local branch.

*Based on 2019 Idaho county data.

 Idaho
Central
CREDIT UNION





“The Hartfield”
 15065 Pronghorn Drive, Caldwell, ID
 By Waltman Homes

“The Hartfield” by Waltman Homes features custom woodwork and craftsmanship that lends the home a nod to the past. Designed with modern cottage-style showcasing vaulted ceilings accented by beams in the kitchen, great room and dining. The gourmet kitchen comes complete with a view from the sink, large island and hidden pantry. Abundant windows and natural light grace the interior. The home includes high end finishes in every detail. Enjoy single level living with a garage large enough for the RV or boat on an acre. Truly feels like home.

- Builder Brandon & Natalie Waltman, 208-914-4411
- Subdivision Purple Sage Estates
- Developer Hess Properties
- Realtor Lane Ranstrom 208-869-9885, EPIC Realty
- Interior Design Natalie Waltman, Waltman Homes
2,662 Sq. Ft.

INSTANT INFO
 TEXT TO: **88000** MSG: **SRV2**
Powered by dextropch.com



WALTMAN HOMES
 CUSTOM HOME BUILDERS



waltmanhomes.com
 RCE-19390
 proudly represented by
Lane Ranstrom
 lane@beaconidaho.com



3



"SunShadow"
 14939 Red Barn Court, Caldwell, ID
 By Bradshaw Construction

"SunShadow" An estate home made for entertaining! Nestled on two wooded acres, this contemporary estate has three levels, a 3-car garage and over 1500 sq feet of outdoor patios and decks, 4-bedrooms, a luxurious Master Suite, which include his-and-hers walk-in closets and a private covered deck. The home has 5 1/2 baths, 2-kitchens with 2-outdoor kitchens, 2-family rooms, a Theater, Gym and a "Hidden Observatory," plus its own private deck. With over 35 years of experience Bradshaw Construction designs each home from scratch, based on individual client needs and dreams.

- Builder** Sallie Bradshaw 208-371-3037 & Craig Bradshaw, 208-989-0370
- Subdivision** Albion Acres
- Realtor** Kimmie Freeman & Heidi Bradshaw 208-371-4835, Silvercreek Realty
- Interior Designer** Bradshaw Construction
- Staging** Heidi Bradshaw, Kimmie Freeman & Jody Bradshaw 6,400 Sq. Ft.



INSTANT INFO
 TEXT TO: 88000 MSG: SRV3
Powered by divvytech.com

RCE-885

BRADSHAW CONSTRUCTION
www.gobradshawconstruction.com

Sallie Bradshaw
 208.371.3037

Craig Bradshaw
 208.989.0370

Four-time Winner at the 2019 Snake River Valley Parade of Homes!
2019 Snake River Valley Builder of the Year!

Are You Ready to Build your Dream Home? | Call Us Today!



STORAGE

- Completely enclosed RV Units with Power
- Pull through sites
- Plenty of room to get your RV back in to your unit

FAMILY OWNED AND OPERATED



208.565.0445

14875 Hwy 44, Caldwell, ID 83607

Hwy44storage.com

GROVER'S

PAY & PACK

ELECTRIC AND PLUMBING SUPPLY

DO IT YOURSELF AND SAVE!

NEW CONSTRUCTION REMODEL MAINTENANCE REPAIR

For over **65 years** providing Superior Customer Service, product knowledge, expert advice, and everyday low pricing to Do-it-yourselfers and Contractors.

Bring us your house plans or just your ideas, and our experienced salespeople will help pick out the products you need and show you how to install them yourself.

ELECTRIC • PLUMBING • LIGHTING • IRRIGATION



NAMPA: 824 Caldwell Boulevard • (208) 466-7807

BOISE: 5730 W Franklin Road • (208) 342-6576 **TWIN FALLS:** 130 Eastland Drive South • (208) 733-7304

Monday - Friday 8:00 to 7:00 Saturday 8:00 to 5:30 Sunday 9:00 to 4:30 www.groverelectric.com



Heating & Air Conditioning

Be Warm. Be Cool. Be Comfy.

Idaho's
PREMIER DEALER™
LENNOX™

Sales
Service
Design



208.343.4445

A1heating.com

327 N. Linder Rd

Meridian

ID

83642



"The Norseman"
 455 Valhalla Street, Middleton, ID
 By Heinz Built Homes

The Norseman by Heinz Built Homes is a sprawling single level sanctuary offering total flexibility for any living situation. Spacious master suite plus three more bedrooms and an office. Finish work with wall and ceiling details rarely if ever seen in Idaho. Storage will not be a problem with the oversized attached 2-car garage plus semi-detached third car plus RV and storage room.

Builder Heinz Built Homes, 208-288-5495
Subdivision Valhalla Country Estates
Developer KCRJ, LLC
Realtor Lane Ranstrom, 208-869-9885, EPIC Realty
Interior Designer Heinz Built Homes
 2,802 Sq. Ft.

INSTANT INFO
 TEXT TO: 88000 MSG. SRV
Powered by dexterm.com

Your home is built with many hands but the choices are all yours.



Heinz Built Homes "When the details matter" heinzbuilt.com
 proudly represented by Lane Ranstrom 1 (208) 869-9885
 lane@beaconidaho.com
EPICREALTY

BUILDING A NEW HOME?

Fairway is here to help with your home financing.



**Contact your
local office today!**

FAIRWAY INDEPENDENT MORTGAGE CORPORATION

Hickory Way Branch

NMLS #787079
1775 N. Hickory Way, Suite 1
Meridian, ID 83646
208-955-1234

Franklin Road Branch

NMLS #1644377
5660 E. Franklin Road, Suite 120
Nampa, ID 83687
208-803-0285

Merchant Way Branch

NMLS #1734083
16130 N. Merchant Way, Suite 125
Nampa, ID 83687
208-606-0985



Copyright©2020 Fairway Independent Mortgage Corporation. NMLS#2289. 4750 S. Biltmore Lane, Madison, WI 53718, 1-866-912-4800. Other restrictions and limitations may apply. All rights reserved. Licensed by the Department of Business Oversight under the California Residential Mortgage Lending Act, License No 41DBO-78367. Licensed by the Department of Business Oversight under the California Financing Law, NMLS #2289. Loans made or arranged pursuant to a California Residential Mortgage Lending Act License.



LIFE MOVES FAST. AND TECHNOLOGY, EVEN FASTER.



HIGH SPEED INTERNET
sparklight.com/internet

855-692-4116

Sparklight®



"The Covington"
 544 Valhalla Street, Middleton, ID
 By Heinz Built Homes

The Covington by Heinz Built Homes is the epitome of thoughtful design. This single level home exudes incredible attention to detail with custom trim work at every turn. The split bedroom plan allows for a very private Master Suite with great flow and desirable access directly from master closet to the laundry. The guest bedroom has direct bathroom access an office with built in work spaces. All on a half-acre lot.

- Builder** Heinz Built Homes 208-288-5495
- Subdivision** Valhalla Country Estates
- Developer** KCRJ, LLC
- Realtor** Lane Ranstrom 208-869-9885, EPIC Realty
- Interior Designer** Heinz Built Homes
2,476 Sq. Ft.

INSTANT INFO
 TEXT TO: 88000 MSG. SRV
Powered by dataquest.com



When buying or selling a home . . . *jc*

JANIE CYPRET
 208.440.9100
 NAOR 2019
 Realtor of the year




Silvercreek REALTY GROUP

Trusted for experience. Respected for results.

6



"The Lakeview"
 18259 Hush Creek Way, Nampa, ID
 By Brighton Homes

As Idaho's only 100% Energy Star Builder, Brighton Homes is proud to bring its unique brand of community design and homebuilding to Canyon County! The Lakeview in ARBOR is one of our exclusive portfolio designs that are only available in Brighton communities. Featuring luxury finishes and a layout that gives everyone in the family a space of their own, The Lakeview is a home that truly defies expectations. *Equal Housing, Energy Star Certified, HERS Rated*



- Builder** Lars Hansen, CMB 208-378-4000
- Subdivision** Arbor
- Developer** Brighton Corp
- Realtor** McKenna Fusselman 208-407-4596
Chris Flexhaug 208-917-4859, EPIC Realty
- Interior Design** Alyse Matthews, Brighton Homes
2,360 Sq. Ft.

INSTANT INFO
 TEXT TO: 88000 MSG: SRV
Powered by divvytech.com

Now Building
 In Our *NEWEST* Community

ARBOR

Located in Caldwell, Idaho – Treasure Valley's newest growing hot spot – Arbor brings the Brighton lifestyle to you with modern farmhouse and urban style homes.

208.908.7533
 BrightonHomes-Idaho.com





Builders FirstSource



YOUR FIRST SOURCE FOR BUILDING
MATERIAL SUPPLIES IN CANYON COUNTY.

At Builders FirstSource, we believe that
no matter how large or small the undertaking,
construction is always local.

LUMBER | WINDOWS | DOORS | MILLWORK
DECKING | SIDING | AND MORE!

415 E Broadway, Meridian, ID 83642 • 208-888-1457

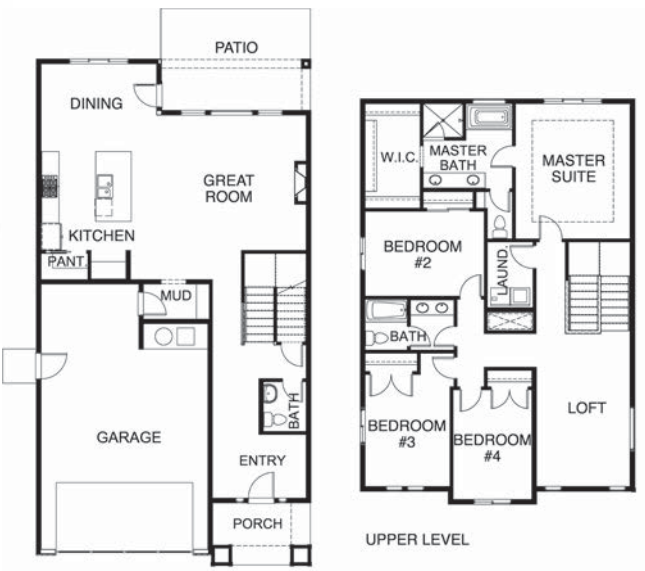
www.bldridaho.com    



"The Galena"
 18272 Hush Creek Way, Nampa, ID
 By Alturas Homes

Welcome to Arbor! Located minutes from the Treasure Valley Marketplace, this highly sought-after community offers unique floor plans featuring modern farmhouse and urban trends. The Galena by Alturas Homes, is situated on a low maintenance lot. Open concept great room, 4 beds, 2.5 baths, loft and an over-sized 2-car garage. Coffered ceilings in private master suite. Convenient 2nd level laundry.

- Builder** Rod Givens, 208-391-4445
- Subdivision** Arbor | **Developer** Brighton Corporation
- Realtor** Kat Gray 208-200-5005
 Katrina Severin 208-919-1270, Boise Premier RE
- Interior Designer** Lauren Smyth, Alturas Homes
- Staging** Andi Marshall, Alturas Homes
 2,500 Sq. Ft.



INSTANT INFO
 TEXT TO: **88000** MSG: **SRV7**
Powered by divvytech.com



Well-designed
Spaces
 that people
Love



Each Alturas home is expertly designed to utilize space efficiently. Every detail of our homes are meticulously planned with you in mind.

ALTURAS
 HOMES  
 @AlturasHomes

Find us online at AlturasHomes.com

ACTION GARAGE DOOR

REPAIR | SERVICE | INSTALLATION

24 HOUR SERVICE • FREE ESTIMATES

GARAGE DOORS & OPENERS

residential | commercial



BOISE
208.362.7218

NAMPA
208.466.1400

*"A choice
you'll
never regret"*



www.actiongaragedoor.net

CUSTOM PUMP SERVICES

Water Pump System Installations

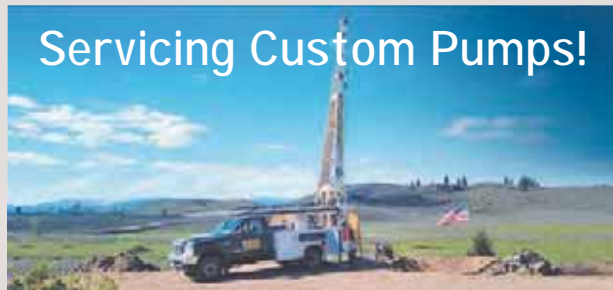
At Custom Pump Services we service and repair all models of water pumps and provide troubleshooting and preventative maintenance. We install a wide variety of water pumps including solar, wind, mechanical, hand pumps, and submersible. We are able to provide water pump installations on both irrigation and domestic wells. We specialize in dairies and remote livestock applications. Winterize and de-Winterize seasonal homes and perform sprinkler blowouts.

We utilize the following Water Pump System Manufacturers:

Goulds, Grundfos, Flint & Walling, Sta-Rite, Franklin, Baker, Monitor, Lorentz & Berkeley and many others

Our Service Area

Boise, Caldwell, Meridian, Kuna, Nampa, Emmett, Eagle, New Plymouth, Payette, Weiser, Cambridge, Midvale, Council, New Meadows, Riggins, McCall, Cascade, Donnelly, Banks, High Valley, Ola, Sweet, Garden Valley, Lowman, Pioneerville, Centerville, Idaho City, Horseshoe Bend and Mountain Home



Servicing Custom Pumps!



Residential
Water
Supply



Water Well
Testing



Irrigation
Pump
Systems



Solar
Pumps

CUSTOM PUMP SERVICES

208-369-0859

PO Box 281, Emmett, ID 83617
custompumpservices.com

*The Treasure Valley's
Number 1 Choice*

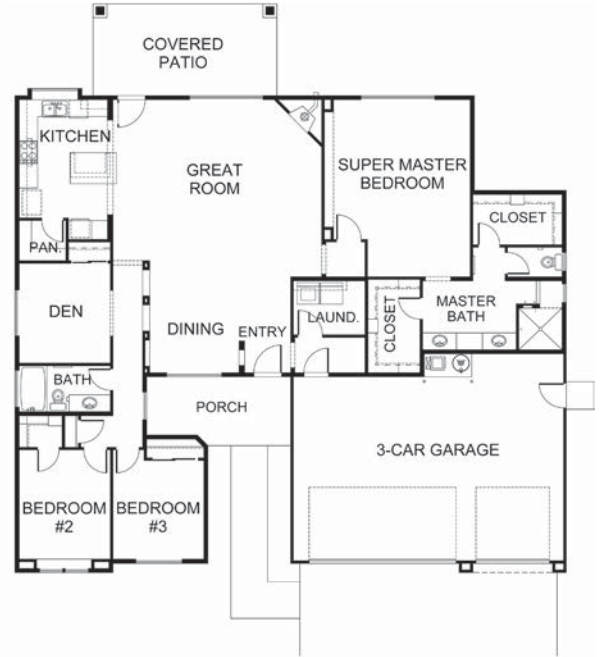
8



"The Andrew"
17340 N. Halls Crossing Street, Nampa, ID
 By Coleman Homes, a Toll Brothers Company

The Andrew by Toll Brothers provides spacious and relaxing living for you and your family. The single-story plan features luxury finishes including flush granite breakfast bar, stainless steel gas cooktop and a wall oven. You'll love the spacious master bedroom retreat with fully tiled walk-in shower, granite countertops, double vanities, and his-and-hers walk-in closets. Enjoy the large covered patio and an expanded 4-car garage. The Andrew is nestled in the peaceful and serene community of Fairhaven in Nampa. Amenities include a community pool, playground and park. Visit beautiful Fairhaven today!

- Builder** Coleman Homes, a Toll Bros Co., 208-424-0020
- Subdivision** Fairhaven
- Developer** Coleman Homes, a Toll Brothers Co.
- Realtor** 208-424-0020, Coleman Homes, a Toll Bros Co.
- Interior Designer** Coleman Homes, a Toll Brothers Co.
2,092 Sq. Ft.



INSTANT INFO
 TEXT TO: 88000 MSG: SRV8
Powered by drimagtech.com

Coleman Homes
A Toll Brothers Company

**COME HOME TO YOUR
 PEACEFUL RETREAT IN NAMPA**



FOR QUESTIONS OR TO SCHEDULE A TOUR VISIT
mycolemanhome.com | (208) 955-6559

FAIRHAVEN | 17336 N HOLBROOK AVE | NAMPA ID

Represented by Toll Brothers Real Estate, Inc.
 Licensed Contractor #RCE 43104.



KitchenAid
Commercial Range

BEST. DECISION. EVER.

For projects of any size, perfection often requires making difficult decisions. Allow the experts at Ferguson to make things easy by introducing you to an extensive collection of stylish products from prominent brands, all designed to bring your vision to life. Learn more at [fergusonshowrooms.com](https://www.fergusonshowrooms.com)

FERGUSON
Bath, Kitchen & Lighting Gallery

BOISE

[FERGUSONSHOWROOMS.COM](https://www.fergusonshowrooms.com)

©2020 Ferguson Enterprises, LLC 0420 1862870

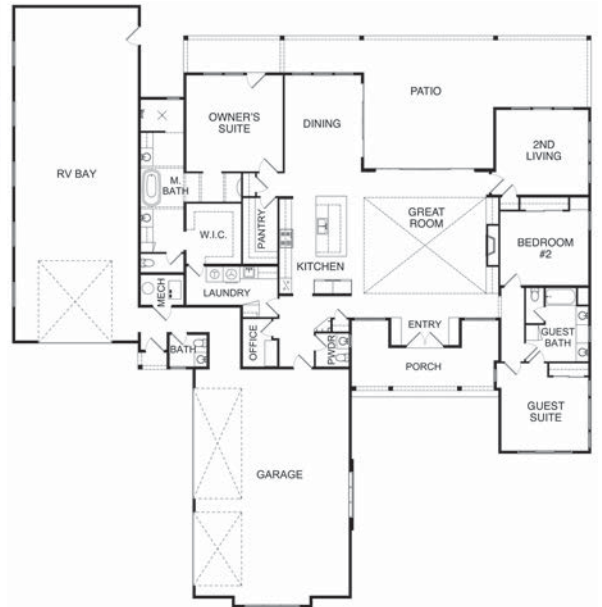
9



"The Expanse"
 7520 E. Kyle Drive, Nampa, ID
 By Prominent Homes, LLC

The home is designed and built with a calming atmosphere with high style, combining a comfortable cottage with hints of modern touches. The expansive 20' ceiling in the family room brings your eye to the brilliant natural lighting throughout. This well-designed spacious 3 bedroom and 2 1/2 bath home, is designed with beautiful contrasting tones and textures, inspired by natural elements. Escape to the spa worthy master suite with the volcanic limestone, bathtub! There is plenty of room for toys with a three-car garage completed by an additional 55' RV bay.

Builder Kevin Detweiler, 208-871-9035
Subdivision Brittonia Heights | Developer Brittonia Heights
Realtor Tracy Kasper 208-867-2709
 Sam Huff 208-724-2025,
 Berkshire Hathaway Silverhawk Realty
Interior Designer Melissa Detweiler, Prominent Homes
 3,009 Sq. Ft.



INSTANT INFO
 TEXT TO: 88000 MSG: SRV
Powered by divvytech.com



Unique Personality and Style

WWW.PROMINENTHOMESIDAHO.COM



RCE-12592

TRACY KASPER
 Broker/Owner, CRS, SFR, GRI
 208.867.2709
 tracy@justIMAGINEidaho.com
 www.justIMAGINEidaho.com

A member of the franchise system of BHH Affiliates, LLC

BERKSHIRE HATHAWAY | Silverhawk Realty
 HomeServices

NEW CONSTRUCTION DIVISION

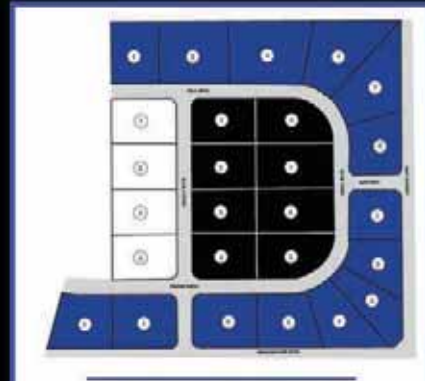
SAM HUFF
 Manager, GRI
 208.724.2025
 sam@silverhawkrealty.com
 www.justIMAGINEidaho.com

• Congratulations to Blackstone Homes and Waltman Homes on their Parade of Homes in our Purple Sage Estates development.



COME SEE THE GREAT BUILDERS WE WORK WITH AND CHOOSE YOUR LOT

- Waltman Homes
- Blackstone Homes
- GreenCastle Homes
- Palomino Homes
- Mendiola Homes
- Bradshaw Homes



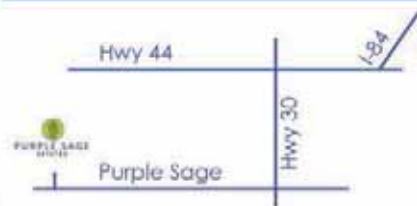
CASCADE HILLS
Premier 1 acre lots in Middleton.
Country living at its best.



2.5 ACRE POND

PURPLE SAGE
ESTATES

Chade Leavitt - Realtor
Berkshire Hathaway Silverhawk Realty (208) 409-5006



- Premier 1 Acre Lots
- Next to Purple Sage Golf Course
- Middleton School District
- Easy Freeway Access

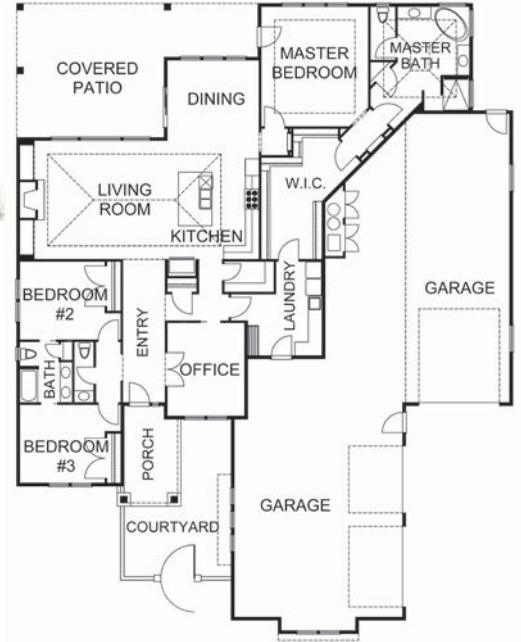
(208) 409-0864 | tyler@hesspropertiesidaho.com



"The Monarch"
 327 S. Knightsbridge Lane, Nampa, ID
 By Cotner Building Company

The 2020 parade home by Cotner Building Company features 2,794 sq. ft. of single level living. This home has 3 bedrooms, 3 baths plus an office. The courtyard entry ushers into the grand entry with a barrel ceiling and custom wood beams. The great room/kitchen features copper accents on the fireplace and kitchen hood.

- Builder** John Cotner, 208-941-9623
- Subdivision** Brittonia Heights
- Developer** Brittonia Heights
- Realtor** Sam Huff 208-724-2025
 Tracy Kasper 208-867-2709
- Interior Design** Kristie Cotner, Cotner Building Company
 2,794 Sq. Ft.



INSTANT INFO
 TEXT TO: 88000 MSG: SRV 0
Powered by divvyjet.com

COTNER BUILDING COMPANY

JUSTIMAGINEIDAHO.COM

Where Passion Meets Experience

COTNER BUILT

WWW.COTNERBUILDING.COM

RCE-1042

BERKSHIRE HATHAWAY
 HomeServices
 Silverhawk Realty

LUXURY COLLECTION

Stronger Together

TRACY KASPER
 Broker/Owner
 208.867.2709
 tracy@justIMAGINEidaho.com

SAM HUFF
 Manager, GRI
 208.724.2025
 sam@silverhawkrealty.com

A member of the franchise system of BHH Affiliates, LLC



BOSCH
Invented for life

NAMPA
APPLIANCE TV
& MATTRESS



Thermador ★
REAL INNOVATIONS FOR REAL COOKS



*G*orgeous design, impeccable craftsmanship, flawless attention to detail, Energy Star certified efficiency. This is why **Nampa Appliance TV & Mattress** is proud to offer **Bosch & Thermador** appliances. We invite you to come experience our new kitchen design center home today!

278 Caldwell Blvd • Nampa, ID • 83651
208.465.0551
www.nampabrandsource.com




BOSCH

NAMPA
APPLIANCE TV
& MATTRESS

Monday - Friday 9-7
Saturday 10-6
Sunday 11-5

Group One | Sotheby's
INTERNATIONAL REALTY

Luxury is not the price,
it's "THE EXPERIENCE"




Damon Van Gerpen
REALTOR®
Mobile: 208.880.6399 Office: 208.287.5000
Email: dvangerpen@grouponesir.com
Web Site: damonvangerpen.grouponesothebysrealty.com

Group One Sotheby's International Realty
913 W. River Street, Suite 300 Boise, Id 83702

Proud
MEMBERS






Let's work together.

Our mission is to provide you with trusted mortgage advice to help you make one of the most important financial decisions of your life.

Along with top-notch, personalized service, Flagstar Bank offers:

- Competitive rates and fees and a wide selection of mortgage loan products.
- Fast and accurate mortgage pre-qualifications
- In-house processing and underwriting
- Secure online document system with e-sign

Call to learn more.



MICHELE WILSON
Senior Loan Advisor
NMLS 67962
mwilson@flagstarretail.com
(208) 841-0910



MONTSE BURKHART
Senior Loan Advisor
NMLS 9811
mburkhardt@flagstarretail.com
(208) 870-3573



DEBBIE RIETH
Senior Loan Advisor
NMLS 489915
drieth@flagstarretail.com
(208) 861-9759



DIANA MOLENAAR
Senior Loan Advisor
NMLS 73865
dmolenaar@flagstarretail.com
(208) 863-1587

HOME LOAN CENTER
439 East Shore Drive, Suite 120
Eagle, ID 83616

"The power of the Human Interest Rate." **Flagstar Bank**

Equal Housing Lender | Member FDIC

Programs for qualified borrowers only. Subject to credit approval, underwriting approval and lender terms and conditions. Programs subject to change without notice.



"The Bungalow"
 7400 E. Kyle Drive, Nampa, ID
 By Larry Richardson Construction

Large, welcoming front porch leads into this charming Craftsman-Style house. All the fine finishes and details you expect from a Larry Richardson built home are found throughout this thoughtfully planned home. Gorgeous hardwood and tile flooring, all wood trimmed windows and craftsman built-ins add livable luxury to this stunning bungalow. The kitchen, a cook's delight with Thermadore appliances, butler's pantry, farm sink, and large entertaining island. The study located off the foyer makes working at home a joy. Spacious garage plus RV bay provides plenty of room for your toys.

Builder Larry Richardson, 208-713-7476
Subdivision Brittania Heights | Developer Brittania Heights
Realtor: Sam Huff 208-724-2025
 Tracy Kasper 208-867-2709
 Berkshire Hathaway Silverhawk Realty
Interior Designer Kat Richardson, Richardson Construction
 2,433 Sq. Ft.

INSTANT INFO
 TEXT TO: 88000 MSG. SRV
Powered by @divvytech.com




Larry Richardson Construction

RCT-34667

208-713-7476

"A Hands-on Builder"

larryrichardsonconstruction@gmail.com



Carefully crafted homes with the newest in quality materials and components. Partner with us to build your dream home. We work together with you from start to finish.





Planning to buy or build your dream home?

We have the products and experience you need!

- ✓ New Construction
- ✓ Purchase ✓ Lot Loans
- ✓ Construction-Perm Loans
- ✓ Contractor Loans

Our team will make sure you get the best options available to you, while helping make your loan quick and easy!

Call today or apply online!

208-985-2555

1880 S. Eagle Road, Meridian

www.BankFirstFed.com



*All credit products are subject to approval.
Institution NMLS#402963



Atkinson's MIRROR & GLASS

www.atkinsonsmirrorandglass.com

24 Hour Emergency Repair & Boardup

- New & Replacement Windows & Doors
- Tub & Shower Enclosures
- Custom Mirrors & Glass Work
- Skylights & Atriums
- Energy Efficient Windows

www.atkinsonsmirrorandglass.com

208-375-3762



Delivery Service • Financing Available (OAC)

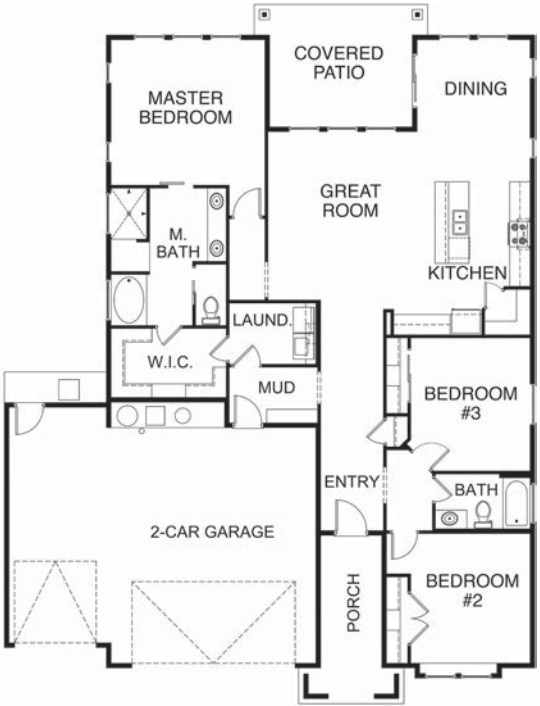
909 N. Orchard Street • Boise



"The Mackinaw"
 4044 S. Scoria Way, Nampa, ID
 By Hathaway Homes

The Mackinaw is a gorgeous, 1908 square foot, single-level home, boasting a large, open-concept main living area with a split-bedroom floor plan. It has three bedrooms and two bathrooms. The kitchen showcases a large island, walk-in pantry, and soft-close cabinetry. You will find granite countertops and custom millwork throughout the home. The oversized master suite welcomes you with tons of natural light and a bathroom that boasts a walk-in tiled shower, deep soaker tub and dual sinks at the vanity. The floorplan also features a large, built-in covered patio.

- Builder** Robert & Greg Hathaway, 208-475-3304
- Subdivision** Lava Peak | Developer Quatro Properties
- Realtor** Lisa J. Cunningham 208-562-7887
 Shaun Urwin 208-989-4811
 Better Homes & Garden RE 43° North
 1,908 Sq. Ft.



INSTANT INFO
 TEXT TO: 88000 MSG:SRV
Powered by @hathawayhomes

208.475.3304 HATHAWAYHOMESIDAHO.COM



Building Homes
 - Since 2003 -



WE MAKE THE HOME OF YOUR DREAMS A REALITY

FOLLOW US ON FACEBOOK @HATHAWAYHOMESIDAHO RCE-3909

You Dream It, We Build It



Contact us today!

Beau Cannon 208-866-0094

Amber Cannon 208-695-7043

Cannonfarmhouse208@gmail.com

WWW.CANNONFARMHOUSE.COM



Your complete home financing solution.

Purchase | Refinance | Renovation | Construction



Sam Newell

Branch Manager / Senior Loan Officer
NMLS 9027
(208) 794-3080

Corey Newell

Loan Officer
NMLS 24591
(208) 571-1892

Ana Flores

Loan Officer
NMLS 410664
(208) 697-7423

Kendra Graybeal

Loan Officer
NMLS 924381
(208) 861-7775

Alison Gillespie

Branch Production Manager
NMLS 707593
(208) 321-4300

Contact us to learn more
about financing options with
Evergreen Home Loans.™



(208) 321-4300
3515 E Overland Road
Meridian, ID 83642



© 2020 Evergreen Home Loans is a registered trade name of Evergreen MoneySource Mortgage Company® NMLS ID 3182. Trade/service marks are the property of Evergreen Home Loans. All rights reserved. Licensed under: Idaho Mortgage Broker/Lender MBL-3134. 04/20



- LOCATED IN THE THRIVING SNAKE RIVER VALLEY WINERY REGION -

Enjoy a small-town atmosphere with homes starting in the low \$300's equipped with modern amenities and services. Located in Caldwell, and a stones throw from the recreation paradise of Lake Lowell, Sienna Hills offers you the lifestyle you have been seeking. A highly amenitized community with a Resort Quality Pool, Stylish Community Center, Basketball & Tennis courts - Sienna Hills has EVERYTHING you have been looking for!



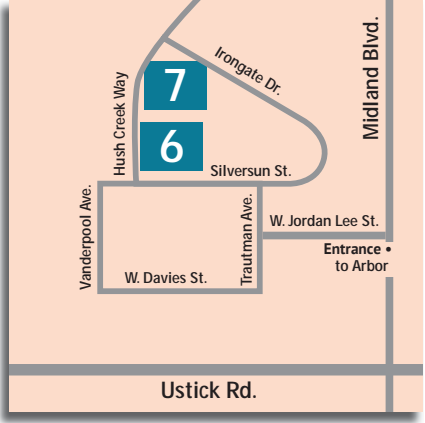
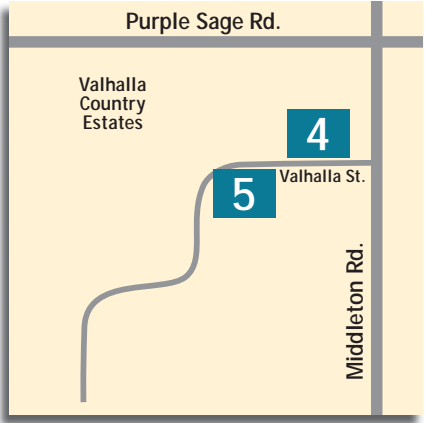
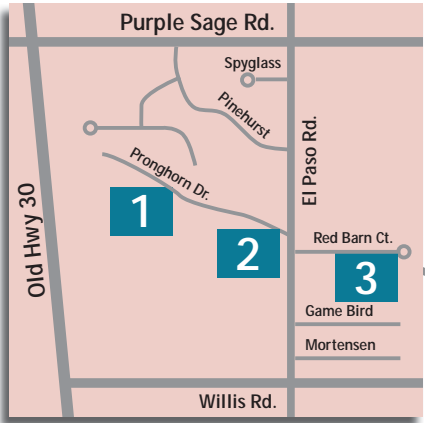
THE LIFESTYLE YOU'VE BEEN SEEKING



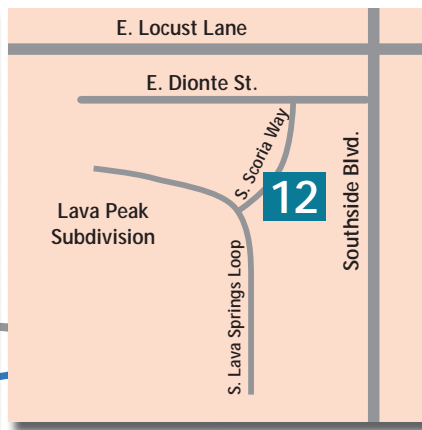
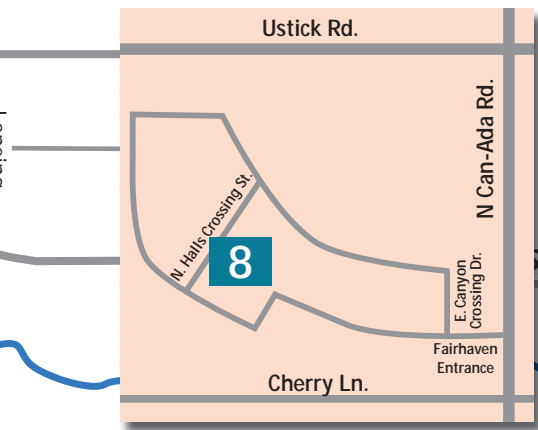
CHARLIE SMITH
REALTOR®
208.921.9896
Charlie-Smith@43re.com

SHAUN URWIN
REALTOR®
208.989.4811
Shaun@43re.com

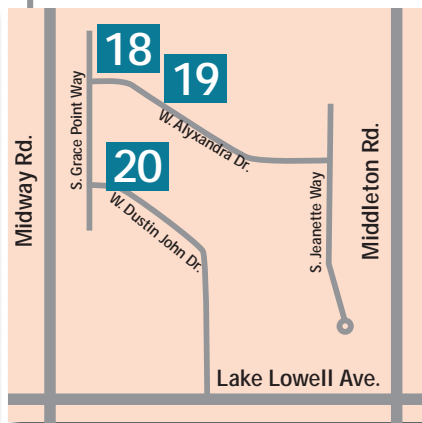
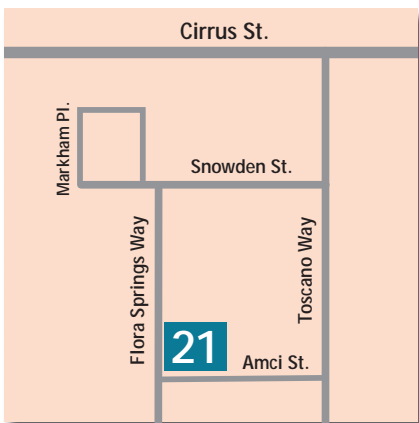
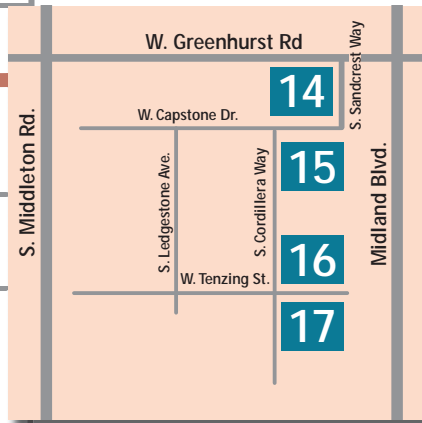




- | | |
|-------------------------|----------------------------------|
| 1 Blackstone Homes | 7 Alturas Homes |
| 2 Waltman Homes | 8 Toll Brothers |
| 3 Bradshaw Construction | 9 Prominent Homes |
| 4 Heinz Built Homes | 10 Cotner Building Company |
| 5 Heinz Built Homes | 11 Larry Richardson Construction |
| 6 Brighton Homes | 12 Hathaway Homes |



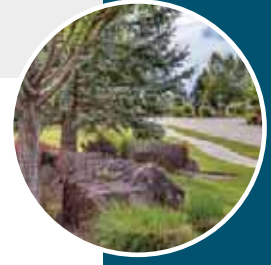
Franklin / Chinden Blvd / Hwy 20/26



- 13 Kingstud Construction
- 14 Brookstone Custom Homes
- 15 Berkeley Building Company
- 16 Tresidio Homes
- 17 Hunter Homes
- 18 Gingich Homes
- 19 Trident Homes
- 20 Hunter Homes
- 21 Jayo Construction
- 22 Tamarack Construction
- 23 JBI Elemental

CRESCENT LAKE

- Custom Home Designs
- Water Lots
- Large Pond & Pathways
- Common Space
- Lush Landscaping



Currently Under Construction

NEW COMMUNITY COMING SOON

Located off Kingsbury Rd., North of Hwy 44 in **Middleton**
www.43re.com/communities/crescent-lake

BUILDER TEAM:



CONTACT:

SHAUN URWIN
 208.989.4811
 Shaun@43RE.com

LISA J. CUNNINGHAM
 208.562.7887
 LisaJCunningham@43RE.com

LET US HELP YOU FIND THE RIGHT **COMMUNITY** FOR YOUR **LIFESTYLE.**

**We specialize in New Construction,
Resale, and Relocation**

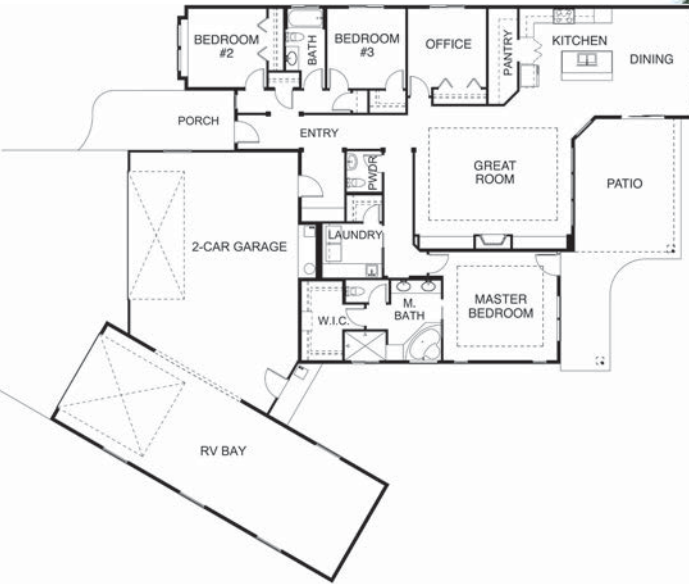
"The idea of building neighborhoods where people create joyful, lasting memories is one of the most satisfying aspects of the real estate industry."

43° NORTH

www.43RE.com

SHAUN URWIN, REALTOR®
 208.989.4811 | Shaun@43RE.com

LISA J. CUNNINGHAM, REALTOR®
 208.562.7887 | LisaJCunningham@43RE.com



"The Monroe"
 9959 Hamby Way, Nampa, ID
 By Kingstud Construction

The Monroe by Kingstud Construction has a fantastic contemporary modern design. The soaring ceilings as you enter will draw your eyes up to the stunning light fixtures and impressive detailed walls. The open floor plan and natural light is so refreshing! Black accents throughout contrast the bright white beautifully. The tiled fireplace and floating bench are spectacular! Don't forget the hidden pantry behind the modern wood cabinetry. If that isn't enough, the 1516 sq. ft. garage and 48 ft. RV bay will win you over for sure.

- Builder** Wade & Alexis Hanson, 208-989-4592
- Subdivision** Table Meadows
- Realtor** Alexis Hanson 208-989-4592
Eagle Creek Realty Group
- Interior Designer** Kingstud Construction
2,463 Sq. Ft.

INSTANT INFO
 TEXT TO: 88000 MSG: SRV 3
Powered by divvyjock.com

Custom Home Builder
 Wade Hanson
 208-941-9957

Alexis Hanson
 208-989-4592
 ahanson@eaglecreekrealty.com

Follow us on Instagram
 @kingstudidaho



Proudly developed by:



Just minutes away from downtown Nampa, Summit Ridge brings you the best of both worlds; a rural lifestyle with gorgeous lot views, golf just moments away and urban amenities at your fingertips. Custom and Semi Custom homes starting in the mid \$300's.



Elevated views of the Treasure Valley & Owyhees
 Minutes from Lake Lowell and RedHawk Golf Course
 No direct back yard neighbors
 Community pool, park and grassy open common areas
 Custom and Semi Custom homes starting in the mid \$300's
 Half acre "Bring Your Own Builder" estate lots now available

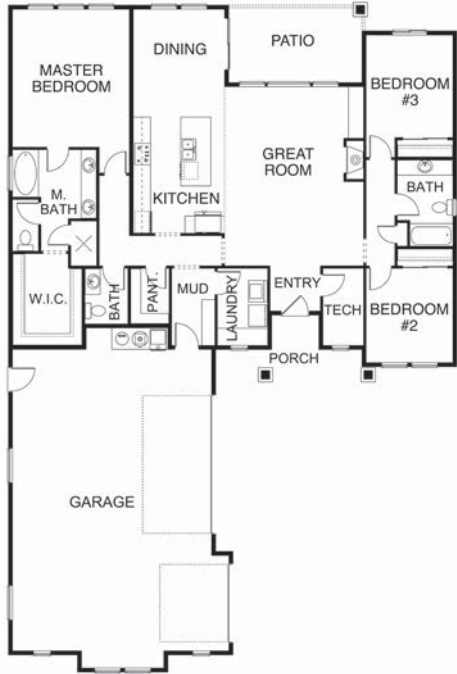
Berkeley Building Co | Brookstone Custom Homes
 Hunter Homes | Pioneer Homes | Tresidio Homes

Mike Moir & Robyn Moir

(208) 850-7495 | (208) 890-6379
 mike@moircompany.com | robyn@moircompany.com
 www.moircompany.com

MOIR & COMPANY
 REAL ESTATE



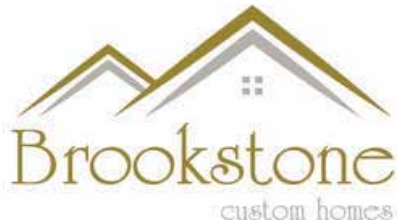


"The Christine"
 1372 W. Capstone Drive, Nampa, ID
 By Brookstone Custom Homes

The Christine by Brookstone Custom Homes brings you a stunning new mix of modern design with cozy touches in an easy living floor plan. Elegance abounds with custom tilework, gorgeous herringbone floors and whitewashed brick tile around the fireplace, dining area and outdoor fire pit. Matte black and gold accents bring warmth throughout and the private master retreat is one of a kind. The Christine lives large with high ceilings, tech room and powder bath plus 3 bedrooms and 2 additional baths, all in 1884 square feet. A must see!

- Builder Marcelo Jesus, 208-921-1206
- Subdivision Summit Ridge
- Developer Summit Ridge
- Realtor Mike Moir 208-850-7495, EPIC Realty
- Interior Designer Brooke Jesus, Brookstone Custom Homes
 1,884 Sq. Ft.

INSTANT INFO
 TEXT TO: **88000 MSG: SRV**
Powered by @vantagecrm.com

brookstonecustomhomes.com | 208 . 921 . 1206 | RCE-37177



Idaho's **ONLY** Premier Solatube Dealer

- Solatubes
- Attic Fans
- Skylights
- Whole House Fans

(208) 377-8399

2053 E. Fairview
Suite 104 • Meridian

SOLATURE
Premier Dealer
Daylighting Consultants | Certified Insulation

solar-concepts.com





RESIDENTIAL COMMERCIAL



CERTIFIED ENERGY EXPERT
TRAINED. TESTED. TRUSTED.

FOR A FREE ESTIMATE CALL
208-377-8781
gandginsulation.com


Call G&G for Year-Round Comfort & Energy Savings




Your Smart Home Technology Specialist

info@treasurevalleysolutions.com
(208) 991-3502 | treasurevalleysolutions.com

Fiberglass • Spray Foam • Radiant Barrier • Air Sealing



EXPERIENCED LOCAL PROFESSIONAL

THE TREASURE VALLEY'S ONLY CERTIFIED EXPERT.

THE PINK PANTHER™ & © 1964-2020 Metro-Goldwyn-Mayer Studios Inc. All Rights Reserved. The color PINK is a registered trademark of Owens Corning. © 2020 Owens Corning.

RCE-30614

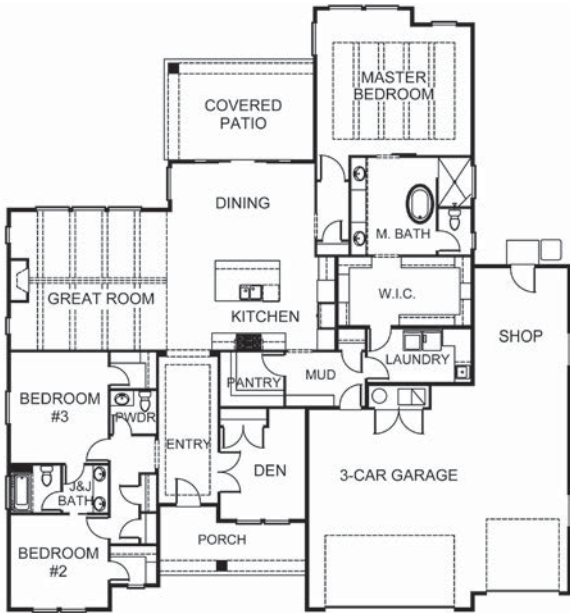


10% DISCOUNT
ON ANY MOTORIZED CORRADI
EXTERIOR SOLAR SHADE OR AWNING



www.blindappeal.com | info@blindappeal.com | 208.888.1056

BLIND
QUALITY WINDOW COVERINGS
APPEAL



"The Sonoma"
 1373 W. Capstone Drive, Nampa, ID
 By Berkeley Building Co.

The Sonoma by Berkeley Building Company is a unique single-level design with vast window expanses, large glass sliders and soaring vaulted ceilings. A fresh take on Farmhouse styling showcasing rich warm woods, soothing crisp white and natural stone tones and extensive ceiling beam detailing that blend to create an impeccable dwelling reminiscent of its namesake world-class wine country region. All in the beautiful, new Summit Ridge community. Making your time spent at home something more.

- Builder** Joe Atalla, CMB, 208-995-2885
- Subdivision** Summit Ridge
- Developer** M3 Companies
- Realtor** Mike Moir 208-850-7495, EPIC Realty
- Interior Designer** Berkeley Building Co.
2,705 Sq. Ft.

INSTANT INFO
 TEXT TO: **88000** MSG: **SRV15**
Powered by dmsbyipch.com



Because there is magic
 to be found in your everyday.



Thoughtfully building homes
 designed with so much more
 than just square feet.



Visit us in Summit Ridge for the Parade of Homes.

**Check Out Exciting
 New Plans and Projects Here.**
www.BerkeleyBuildingCo.com/new



Proud Builder of the St. Jude Children's Research Hospital Dream Home.



16



"The Galloway"
 1374 W. Tenzing Street, Nampa, ID
 By Tresidio Homes

Charming and spacious! The Galloway by Tresidio Homes captivates you with gorgeous hardwood flooring throughout, designer light fixtures, and a gourmet kitchen featuring Samsung SS appliances, custom cabinetry, and quartz countertops. The Great Room welcomes you with a decorative tiled fireplace with stained mantel surrounded by custom built-ins. Pamper yourself in the spa-like owner's suite with fully tiled walk-in shower, free-standing tub and dual vanities. Includes upstairs bonus with full bath, 4-car garage, and covered patio. HERS rated for lower utility bills. Close to Lake Lowell, Owyhees, Redhawk Golf Course! *Equal Housing, HERS Rated*

- Builder** Jon Hastings, CMB, 208-917-7500
- Subdivision** Summit Ridge | **Developer** M3 Companies, LLC
- Realtor** Mike Moir 208-850-7495, EPIC Realty
- Interior Design** Nadza Ibrahimagic, Tresidio Homes
2,508 Sq. Ft.



INSTANT INFO
 TEXT TO: 88000 MSG:SRV
Powered by divvytech.com



BUILD 
Your **TRESIDIO HOMES**
DREAM

- ✓ YES! YOU can PERSONALIZE Your home!
 - ✓ YES! YOU are treated like FAMILY!
 - ✓ YES! We have a HOME for YOU!
- NOW SELLING in Nampa, Kuna, Star, Eagle, & Meridian

RCE 27875 www.tresidio.com | 208.917.7500



Proudly supports
our community



Idaho Food Bank
Shop with a Cop
NNU Scholarship
BSU Scholarship
CWI Scholarship
C of I Scholarship
Sleep in Heavenly Peace
Guardian Ad Litum
Nampa School District
Vallivue School District
Women's & Childrens Alliance
Lifeline Pregnancy Center
Nampa Boys & Girls Club

When you imagine
your ideal home,
picture the perfect
loan to match:

The
ALL-IN-ONE
custom
construction loan



We've crafted the easiest loan process
that also saves you money.

See us for our ALL-IN-ONE custom construction loan. It's crafted with you in mind: an efficient process, saving you time—and money. It's a loan industry game-changer, and features:

- One-time close
- 12-months, interest-only payments
- Just one set of fees

Call or stop in to learn about our unique approach.

**Residential
Lending Center**

1660 N Eagle Rd
208-855-9111



**Mountain
West Bank**
Division of Glacier Bank

MountainWestBank.com



NMLS #472212



FDIC

Mortgage



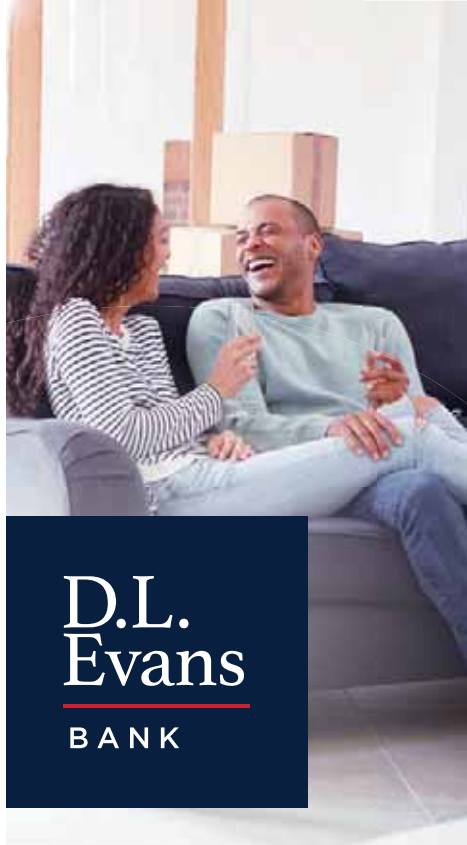
"The Taylor"
 1395 W. Tenzing Street, Nampa, ID
 By Hunter Homes

Modern design, functional floor plan and dramatic finishes. The Taylor by Hunter Homes will exceed your expectations! Modern, clean lines and cool tones welcome you to the heart of the home. Painted kitchen island and perimeter cabinets, custom tilework throughout and full wainscoting in the office. Enjoy easy maintenance hardwood in main living areas with the warmth of carpet and tile in bedrooms and bathrooms. The beauty continues outside with stamped concrete edging and custom concrete retaining wall. Entertain on the huge covered patio featuring plank stamped concrete. Timeless beauty!

- Builder** Steve Edwards, 208-573-1040
- Subdivision** Summit Ridge
- Developer** M3 Companies, LLC
- Realtor** Mike Moir 208-850-7495, EPIC Realty
2,847 Sq. Ft.



INSTANT INFO
 TEXT TO: 88000 MSG: SRV
Powered by dlvantech.com



This is finding your place.

Celebrate coming home together.

Apply for your home loan today, dlevans.com/mortgage



Alicia Albright
 Mortgage Loan Officer
 Cell 208.989.5723



Don Lillie
 Mortgage Loan Officer
 Cell 208.794.6394



Lupe Rodriguez
 Mortgage Loan Officer
 Cell 208.283.3611

THIS IS COMMUNITY BANKING



Give
as
you
go™

Building hope and homes in
Oregon, Washington, and Idaho



Hayden's mother, Virginia, did more than help found our company: she found the spirit of generosity in everyone she met. She knew a shoulder to lean on was stronger than any 2x4. And that leading by example was the greatest gift of all. For 30 years, we've partnered with nonprofits, provided the dream of homeownership to deserving families, and empowered every team member to be the next generation of givers. We call it GIVE AS YOU GO. It turns out Virginia was right. The more we give, the more grateful we are.

Thank you, Virginia

NEW HOMES FROM THE \$200s
HAYDEN-HOMES.COM



HAYDEN
HOMES
Give As You Go™

LP SmartSide®
TRIM & SIDING
ID RCE 29144



208-463-9433



Have It Done Right The First Time

WORKING FOR YOU



MELANIE STEINHAUS
REALTOR®

208-880-5443

Call for all your real estate needs!



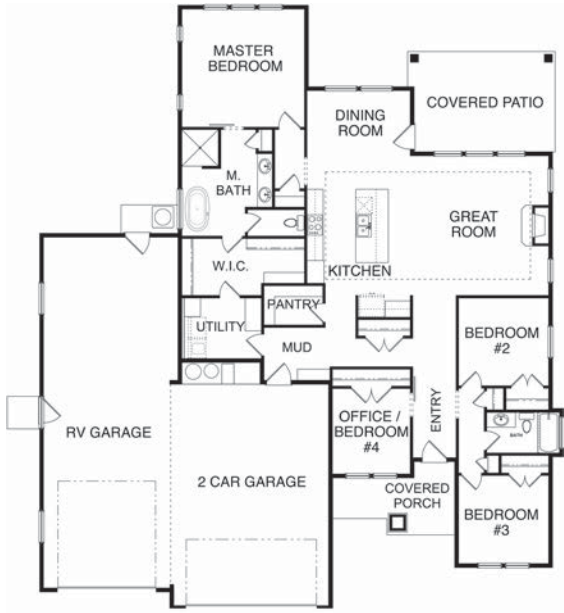
COLDWELL BANKER
TOMLINSON

Pioneer Homes
Consistent Quality ... Always

• **BUILDER OF THE YEAR** •
Snake River Valley Building Contractors Association
(2017)

Now Building in: Saddleback Ridge Estates (Middleton) • Sienna Hills (Caldwell) • Lava Springs (Nampa) • Summit Ridge (Nampa) • Apple Hills (Wilder)

Let's Build Something Together • PioneerHomesIdaho.com • (208) 468-9200



"The Rilyn"
13266 S. Grace Point Way, Nampa, ID
By Gingrich Homes

Gingrich Homes proudly presents his newest model, The Rilyn. This gorgeous full-stucco and stone home features a massive 44' RV garage. The upgraded kitchen boasts custom soft-close cabinets to the ceiling, coveted Bosch appliances, gorgeous stained beams, and beautiful details throughout including sophisticated accent walls. Large picture windows compliment a light and comfortable living space, framing an oversized covered patio. The stunning master suite features a spacious walk-in tile shower and separate free-standing tub. Details such as herringbone tile and designer lighting really add a touch of finesse.

- Builder Tyler Gingrich, 208-995-3961
- Subdivision Stella's Point | Developer KNT Investments
- Realtor Shaun Urwin 208-989-4811
- Lisa J. Cunningham 208-562-7887, Better Homes & Garden RE 43° North
- Interior Design Dillabaugh's Flooring America & Tyler Gingrich, Gingrich Homes 2,122 Sq. Ft.

INSTANT INFO
 TEXT TO: **88000** MSG: **SRV 8**
Powered by @realtor.com



MAKING DREAM HOMES A REALITY FOR THREE GENERATIONS



FOLLOW US ON FACEBOOK AND INSTAGRAM @GINGRICHHOMES RCE-51774



Ready to build? We're ready to help find the best loan for you.

usbank.com/mortgage



Call today, and put our knowledge to work for you.

Sam Evans

Mortgage Branch Manager
208.383.7103
NMLS #: 193206

Chris Crain

Mortgage Branch Manager
208.884.6441
NMLS #: 488848

Linda Higby

Mortgage Loan Officer
208.383.7123
NMLS #: 487383

Judd Patterson

Mortgage Branch Manager
208.506.4544
NMLS #: 518397

Mike Bauscher

Mortgage Loan Officer
208.373.8021
NMLS #: 1190931

Elizabeth Chapman

Mortgage Loan Officer
208.888.3695
NMLS #: 779050

Maria Mendez

Mortgage Loan Officer
208.922.2113
NMLS #: 1965278

Jeremy Austgen

Mortgage Loan Officer
208.506.4542
NMLS #: 176885

Trish Christensen

Mortgage Loan Officer
208.999.3457
NMLS #: 502326

Paul Garcia

Mortgage Loan Officer
208.884.6430
NMLS #: 1446647

Ron Sorenson

Mortgage Loan Officer
208.383.7766
NMLS #: 402115

Darren Milton

Mortgage Loan Officer
208.506.4543
NMLS #: 1890673

Julie Hobbs

Mortgage Loan Officer
208.373.8711
NMLS #: 90637

Severo Hernandez

CRA Mortgage Loan Officer
208.455.5580
NMLS #: 778501

Sidney Vogt

Mortgage Loan Officer
208.465.3697
NMLS #: 410668



Loan approval is subject to credit approval and program guidelines. Not all loan programs are available in all states for all loan amounts. Interest rates and program terms are subject to change without notice. Visit usbank.com to learn more about U.S. Bank products and services. Mortgage, Home Equity and Credit products are offered by U.S. Bank National Association. Deposit products are offered by U.S. Bank National Association. Member FDIC. ©2020 U.S. Bank 283401c 4/20



BUILDING VALUE FOR LIFE

New Energy-Efficient Homes from the Low \$200s

Hubble Homes has been proudly building homes of exceptional quality, craftsmanship and value throughout the Treasure Valley for over 24 years. Our **ENERGY STAR® Certified** homes are **HERS® Rated** and come with **annual energy savings!** Plus, all of our homes include a **2-10 Home Warranty**, so you are covered in case the unexpected happens.

VISIT ONE OF OUR VALLEY COMMUNITIES

- Adams Ridge in Nampa
- Brownstone Estates in Nampa
- Charlesworth in Boise
- Charter Pointe in Boise
- Franklin Village in Nampa
- Greyhawk in Kuna
- Greendale Grove in Star
- Mason Creek in Caldwell
- Mattingly Creek in Nampa
- Silverstone in Mountain Home
- Sunnyvale in Nampa
- Southern Ridge in Nampa
- Windsor Creek East in Caldwell

Find Your New Home at [HubbleHomes.com](https://www.HubbleHomes.com)

208.433.8800 | Hubble Homes, LLC, RCE-049



19



"The Griffen"
 11700 W. Alyxandra Drive, Nampa, ID
 By Trident Homes

Prepare to be dazzled by Trident Homes' new single-level home, The Griffen. This home features a massive 55' RV bay with more than enough room for all your toys! The oversized back patio stretches across the back of the home overlooking the most breathtaking views of the Valley and Foothills. Large picture windows frame this view from the extensive Great Room/Kitchen area. The Master Suite features a full-tile European shower, exquisite master closet and captures more of the valley views with additional patio access.

- Builder** Tracy Skidmore, 208-995-3613
- Subdivision** Stella's Point
- Developer** KNT Investments, LLC
- Realtor** Shaun Urwin 208 989-4811
 Lisa J Cunningham 208-562-7887,
 Better Homes & Garden RE 43° North
 2,074 Sq. Ft.



INSTANT INFO
 TEXT TO: **88000** MSG: **SRV19**
Powered by divinitytech.com



TRIDENT HOMES

IMAGINATIVE PLANS. UNCOMPROMISING QUALITY.

TRIDENTHOMESLLC.COM
 @TRIDENTHOMESLLC

RCE-37861



FROM START TO FINISH

WE MAKE BUILDING EASY FOR
OUR CONTRACTORS



44 YEARS
OF SERVICE
TO OUR
CUSTOMERS



www.franklinbuildingsupply.com





Snake River Valley BCA

Associate Members

A-1 Heating & Air Conditioning
 Academy Mortgage
 Action Garage Door
 Alliance Title
 Alside Supply
 Architecture Northwest, LLC
 Arctic Air, Inc.
 Atkinson's Mirror & Glass
 Ballenger Insurance
 Bank of Idaho
 Banner Bank
 Basalite Concrete
 Berkshire Hathaway
 Home Services, Silverhawk
 Best Homes of Idaho
 Better Homes & Garden
 Real Estate 43°
 Blind Appeal, Inc.
 Blindsources
 Blossom Heights Real Estate
 Brandt Agency
 Builders FirstSource
 Butte Fence, Inc.
 Caldwell Board of Realty
 Canyon Construction, Inc.
 Canyon County
 Canyon Habitat for Humanity
 CapitalOne
 Citywide Home Loans
 Coldwell Banker Tomlinson Group
 Coltrin Central Vacuum Systems
 Commercial Tire, Inc.
 Cost Less Carpet
 Custom Marble
 Custom Pump Services

D.L. Evans Bank
 Darlene's Printing
 Dillabaugh's Flooring America
 Dillon Plumbing
 Disaster Kleenup
 Eagle Creek Realty Group
 Ellis Agency & Associates, Inc
 Empire
 EPIC Realty
 Evergreen Home Loans
 Fairway Independent Bank
 Ferguson Enterprises
 Fidelity National Title
 First American Title
 First Federal Bank
 First Interstate Bank
 Flagstar Bank Home Loan Center
 Four Point Five Real Estate
 Franklin Building Supply
 G & G Insulation
 Go Green Insulation
 Goodman Tractor Services
 Green's Heating
 & Air Conditioning
 Group One Sotheby's
 International Realty
 Grover's Pay & Pack
 Guild Mortgage
 Home Heating & Air Conditioning
 Homes of Idaho
 Idaho Central Credit Union
 Idaho Custom Rain Gutters
 Idaho Fence Masters
 Idaho First Bank

Idaho Housing & Financing
 Idaho Power Company
 Idaho Press
 Idaho Roofing Contractors, Inc.
 Idaho Smart Homes
 Intermountain Gas
 Keller Williams Realty
 Leisure Time, Inc
 Lennox
 Lowe's
 Mountain Timber Products
 Mountain Land Design
 Mountain West Bank
 Nampa Appliance TV & Mattress
 Nampa Association of Realtors
 Nampa Chamber of Commerce
 Nampa Floors & Interiors
 NextHome Treasure Valley
 Osmus Roofing
 Overhead Door Company
 Page's Windows & More, LLC
 Paramount Residential
 Mortgage Group
 Pella Windows
 Peterson & Associates Realtor
 Peterson Dodge, Chrysler, Jeep Ram
 Pioneer Title, Caldwell
 Pioneer Title, Nampa
 PortaPros
 Premier Home Staging
 Progressive Realty Corporation
 ReMax Executives
 Renewable Energy NW, LLC
 Ripley Doorn & Co.

Sekady Capital, LLC
 Silvercreek Realty
 Silvercreek Realty Group,
 Kimberly Freeman
 Silverline Systems
 Solar Concepts
 Sparklight
 Stability Networks
 Stone Surfaces
 Sunpro
 Sunroc Corporation
 Sweet Group Realty
 Synergy One Lending
 Taylor Drywall, Inc
 Team One Group Real Estate
 Team Realty, Inc
 The Blind Gallery
 The Gable Group
 The Loop Technologies
 TitleOne Corp
 Townsquare Media
 Treasure Valley Innovations
 Treasure Valley Realty Group
 Treasure Valley Solutions
 TUF Flooring, LLC
 U.S. Bank
 Umpqua Bank
 United Site Services
 WaFd
 Wells Fargo Home Loans
 Western Window
 White Pine Insurance
 Women's Council of Realtors
 Xtreme Epoxy





"The Hemlock"
 11684 W. Dustin John Drive, Nampa, ID
 By Hunter Homes

Introducing Hunter Homes' newest model, The Hemlock. This beautiful, single-story sits on a large view lot. Take in 180° of breathtaking views of the valley from the two-tiered, stamped concrete patio extending beyond the covered roofline, providing both sunny and shaded outdoor areas to enjoy. RV parking available with a paved pad and double-gate for additional space for toys! Hunter Homes takes pride in creating unique spaces incorporating artistic design, thoughtful craftsmanship and luxury finishes. Nothing has been missed from the exterior to the interior of this absolutely gorgeous home!

- Builder** Steve Edwards, 208-573-1040
- Subdivision** Stella's Point | **Developer** KNT Investments
- Realtor** Shaun Urwin 208-989-4811
 Lisa J Cunningham 208-562-7887,
 Better Homes & Garden RE 43° North
- Interior Design** Taylor Edwards, Hunter Homes
 1,849 Sq. Ft.

INSTANT INFO
 TEXT TO: **88000** MSG. SRV 0
Powered by @vintagelife.com



Building Dream Homes Since 2000



FOLLOW US ON FACEBOOK AT @HUNTERHOMESINC.ORG RCE-813

WWW.JUSTIMAGINEIDAHO.COM



LUXURY COLLECTION

BRITANNIA HEIGHTS

A HAWKINS HOMES COMMUNITY

Modern Country Living

Brittania Heights is a remarkable new home development centrally located between Nampa and Meridian in the heart of Treasure Valley. With a tranquil setting and inspired by modern-country living, Brittania Heights' homes are ornamented with stone elements and rustic wood, highlighting their scenic views. Homesites are ideal for RV garages and open space. Located minutes from the Ten-Mile Interchange and Nampa-Gateway Shopping Center, ensures city amenities are never far away.



COTNER BUILDING COMPANY



PROMINENT HOMES



LARRY RICHARDSON CONSTRUCTION

TRACY KASPER Broker/Owner
208.867.2709

SAM HUFF Manager, GRI
208.724.2025

www.justIMAGINEidaho.com

BERKSHIRE HATHAWAY | Silverhawk Realty
HomeServices

NEW CONSTRUCTION DIVISION

JEFF HESS Subdivision Owner
Brittania Heights LLC, Manager
208.908.5503

jhess@hcollc.com
855 W Broad St, Ste. 300
Boise, ID 83702

You have the
Power to Save
energy and money.



Idaho Power's Residential New Construction Pilot Program

offers builders a cash incentive to build energy-efficient,
all-electric single-family homes with heat pumps.

Building an energy-efficient home provides increased comfort,
lower maintenance costs and a healthier environment.



idahopower.com/newhomes



Working on creating your dream home? We can help! We will walk you through all the different window & door designs available. All of which have a primary function of providing you years of comfort and sustainability yet are suited to your unique style.

Small changes in your home, can give you the secret of a Million Dollar curb appeal at affordable prices. Make your neighbors wonder how you did it!

Where customer service doesn't end after the sale!

Other Products and Services

- Interior & Exterior Doors
- Glass Replacement
- Mirrors
- Trim
- Decking
- Free Estimates
- Free Deliveries in the Treasure Valley

New Construction ★ Remodel ★ Replacement
Warranty Inspections

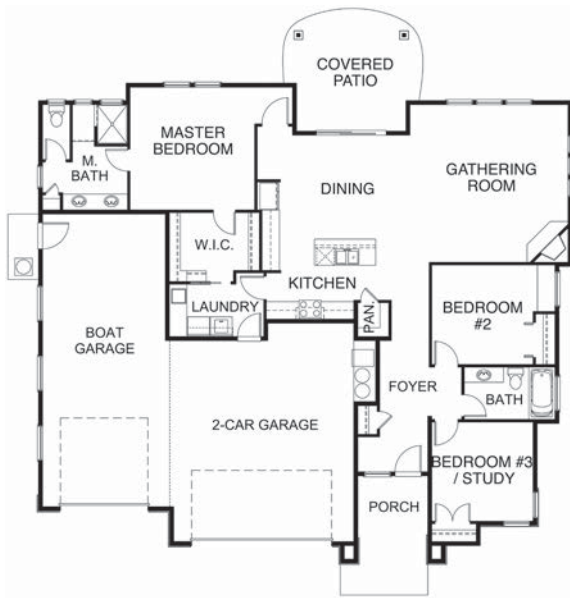


Owner Pam Page
208-375-7940
pam@pageswindows.com

Solid Rock HOMES
Design - Build - Commercial - Consulting

Building Dreams One Home at a Time

Randy Neary 208-573-5268 *solidrockhomes.net*



"The Ava Jean"
 15364 Flora Springs Way, Caldwell, ID
 By Jayo Construction

Featuring Jayo Construction's beautiful 'Ava Jean.' With 3 bedrooms and 2 baths this home is 1,846 square feet of comfortable living space. Walk into this open floor plan with strategically placed windows for natural lighting. Step into the kitchen featuring stainless appliances, custom cabinetry with hardwood flooring and granite countertops throughout. Tile flooring in the master bath and utility room. Bring your toys because this home comes with an oversized 3rd bay garage and storage galore. Don't miss seeing this custom home!

- Builder** Shane Jayo, 208-322-3663
- Subdivision** Sienna Hills
- Developer** Kevin Howell Construction
- Realtor** Charlie Smith 208-921-9896,
 Better Homes & Garden RE
 1,846 Sq. Ft.

INSTANT INFO
 TEXT TO: 88000 MSG.SRV
Powered by @vayapost.com

A MARK OF DISTINCTION IN IDAHO FOR OVER 30 YEARS...



208.322.3663 | JAYOCONSTRUCTION.COM

RCE-30539



WATERPROOF FLOORING • HARDWOOD • CARPET • GRANITE • TILE

Your Style Your Vision Our Business

Quality valley builders and designers count on us,
and have for over 65 years!



www.nampafloors.com

Since 1954
**NAMPA FLOORS
& INTERIORS**

Proudly family owned for three generations.



Snake River Valley BCA

Builder/Developer/Remodeler Members

Agile Homes
 Alturas Construction
 Antler Creek Homes
 B & B Custom Homes
 Berkeley Building Co
 Bill Pugh Construction
 Blackstone Homes
 Boyce Construction
 Bradshaw Construction
 Brighton Homes
 Britannia Heights
 Brookstone Custom Homes
 Cambridge Homes
 Cannon Farmhouse
 CBH Homes
 Chaney Stotts Construction, Inc.
 Coleman Homes a Toll Brothers Co.

Cotner Building Company
 Gingrich Homes, LLC
 Great Sky Development, Inc
 Greencastle Homes
 Harding Homes
 Hathaway Homes, LLC
 Hayden Homes, Inc.
 Heinz Development
 dba Heinz Built Homes
 Hess Properties
 Hibbard Construction, Inc
 Hubble Homes
 Hunter Homes, Inc
 Ideal Custom Homes
 Intermountain West Homes, LLC
 Iron Oak Homes
 Jayo Construction

JB1 Elemental
 KAD Construction
 KCRJ, LLC
 Kevin Howell Construction
 Kingstud Construction
 Kinzler Builders & Development
 KNT Investments, LLC
 Lanco, Inc
 Larry Richardson Construction
 Lexar Homes
 Liberty Enterprises
 M3 Companies
 Mitters & Such dba M & S Homes
 Pioneer Homes
 Precision Builders
 Prominent Homes, LLC
 Pyramid Construction

Quatro Properties, Inc.
 Robert Myers Construction
 RTL Homes, LLC
 Shepherd Development
 Solid Rock Homes
 Southwood Homes
 Sunrise Homes
 Tamarack Construction, Inc
 Titan Homes, LLC of Boise
 Tradition Custom Homes, Inc.
 Tresidio Homes
 Triple Crown Construction, LLC
 Valli-Hi Custom Homes
 Waltman Homes
 Young American Homes, Inc
 Z & H Construction



SRVBCA



Professional Women in Building

The Snake River Valley Professional Women in Building Council (PWB) Encourages professional development to advance the interest and opportunities for women. Empowering and promotes growth and equality of women throughout the construction and architecture-related fields.



Contact the SRVBCA about how to become an SRVBCA PBW • 208-467-9276

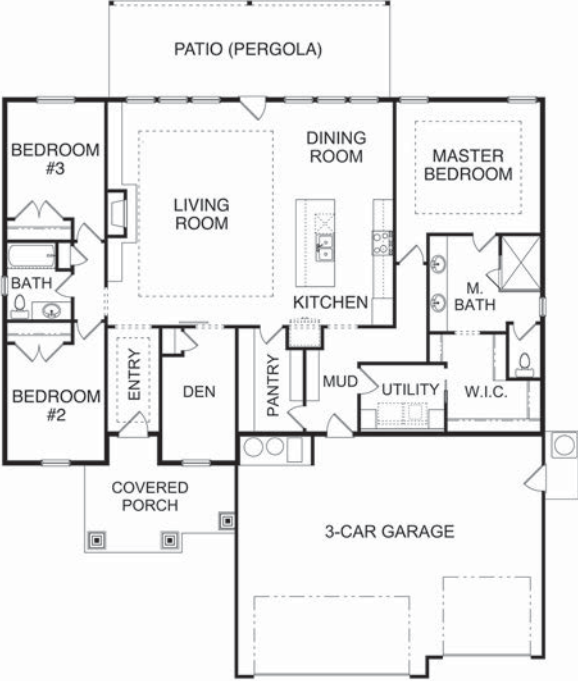
22



“Teton Peak”
 4619 Gap Creek Avenue, Caldwell, ID
 By Tamarack Homes

Tamarack Homes unveils the “TETON PEAK”! Stately cedar accents draw you in from the exterior siding to the custom-built pergola! Expansive gourmet kitchen opens onto great room accentuated with a honed concrete fireplace intricately framed by custom shelving and cabinetry. Fantastic dining area with extended buffet cabinetry. Butler’s pantry with garage access, built-in appliance bar and mini-fridge. Tech office/den with built-in custom desk. Private master suite with custom tile work, dual vanity and walk-in closet with custom closet system PLUS additional access into laundry room!

- Builder** Buck Jacobs, 208-724-2306
- Subdivision** Cumberland Estates
- Developer** Great Sky Development
- Realtor** Sam Huff 208-724-2025
 Tracy Kasper 208-867-2709
 Berkshire Hathaway Silverhawk Realty
- Interior Designer** Tamarack Construction
 2,020 Sq. Ft.



INSTANT INFO
 TEXT TO: 88000 MSG:SRV
Powered by divanetech.com

Dream. Design. Build.

RCE-630 WWW.BUILTBYTAMARACK.COM

TAMARACK
 CONSTRUCTION



BERKSHIRE HATHAWAY
 HomeServices
 Silverhawk Realty

LUXURY COLLECTION

TRACY KASPER
 BROKER, OWNER
 208.867.2709

SAM HUFF
 MANAGER
 208.724.2025

A member of the franchise system of BHH Affiliates, LLC

CAFÉ

DISTINCT BY DESIGN™



Gone are the days of settling for only stainless steel appliances. Today, our style-driven consumer – one who loves to entertain and keeps the pulse on the world of décor – is looking for appliances that will grow with their design vision. The Matte Collection's premium finishes—in Matte White and Matte Black-- are the answer in the move from sterile and standardized to custom and designer-worthy. This is why Nampa Appliance TV & Mattress is proud to offer the complete line of Café™ appliances.



NAMPA
APPLIANCE TV
& MATTRESS

Monday - Friday 9-7 • Saturday 10-6 • Sunday 11-5
278 Caldwell Blvd, Nampa, ID 83651
208.465.0551 • www.nampabrandsource.com

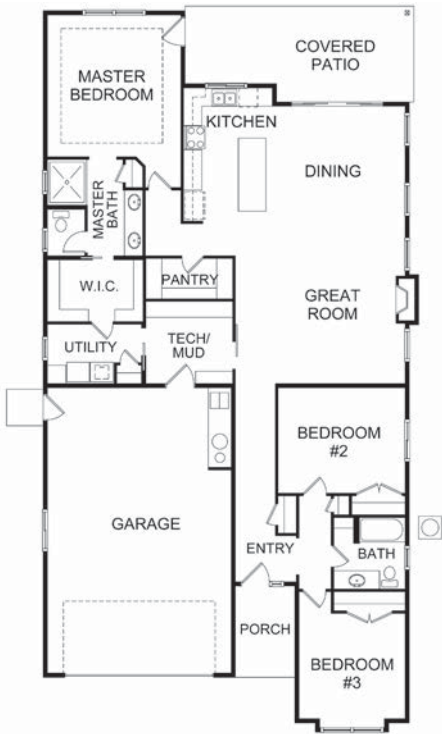
23



"The Jack"
 2217 Sunset Avenue, Caldwell, ID
 By JBI Elemental Design + Build

Welcome to the JACK by JBI Elemental Design + Build. An inviting house plan with elevated amenities that we include with all our homes: Quartz Countertops, Hardwood throughout Great Room, Tile Floors in all Baths & Utilities, Tile Shower Surrounds in all Baths. Additional standards include Smart Home Ready Technology & Solar Ready Hook-up. Our layout features a Tech/Mud Room with pass-thru laundry and Master Closet. We also love our Vaulted Ceiling with 10 foot Double Siding Patio Door for an Indoor/Outdoor Atmosphere.

- Builder** Ian Donovan & Bryan Shepherd 208-870-7835
- Subdivision** Sunset South
- Developer** Shep Red, LLC
- Realtor** Stefanie Shepherd 208-803-1141
- Interior Design** Best Homes of Idaho, Mountain Realty
- JBI Elemental
2,037 Sq. Ft.



INSTANT INFO
 TEXT TO: 88000 MSG: SRV 3
Powered by @insaytech.com



The JBI Elemental Team believes in Elevating Home Standards by using unique finishes we select from our Boutique Interiors Gallery in the heart of Downtown Boise.

Walking our homes, you will appreciate the passion we put into each build - Throughout the Treasure Valley.

Visit us today to see our current and upcoming communities - get to know our style!

BETTER TO HAVE A LITTLE BIT OF SOMETHING REALLY PRECIOUS, THAN TO HAVE A LOT OF MEDIOCRITY



email: info@jbielemental.com
 phone: 208.870.7835
 instagram: jbielemental

404 S. 8TH ST - STE 150
 BOISE, IDAHO 83702
 RCE-50458

One Acre Country View Lots

Now Taking Lot Reservations!



LUXURY
COLLECTION

www.justImagineidaho.com



CUSTOM HOMES BY AWARD-WINNING BUILDER TEAM

SAM HUFF
Manager, GRI
208.724.2025
sam@silverhawkrealty.com
www.justIMAGINEidaho.com

A member of the franchise system of BHHS Affiliates, LLC

BERKSHIRE HATHAWAY | Silverhawk Realty
HomeServices

NEW CONSTRUCTION DIVISION

TRACY KASPER
Broker/Owner, CRS, SFR, GRI
208.867.2709
tracy@justIMAGINEidaho.com
www.justIMAGINEidaho.com

www.canyonparade.com

Snake River Valley BCA



Need More Space?

Whether you are in need of a builder, remodeler, home improvements, refinancing or more. We have over 200 members who can help with your home projects!
Contact the SRVBCA



208-467-9276
www.srvbca.com
srvbca@qwestoffice.net

Affiliated With



nahb.org



TRIDENT HOMES

EXPERIENCE THE TRIDENT HOMES DIFFERENCE

INNOVATIVE DESIGN • CLEAR COMMUNICATION • ENERGY EFFICIENCY



TRIDENTHOMESLLC.COM

[@TRIDENTHOMESLLC](https://www.instagram.com/TRIDENTHOMESLLC)

STELLA'S POINT

Conveniently located close to town while still within a quick drive to Lake Lowell and the Snake River Valley Wine Region.
www.STELLASPOINT.com



Plenty of Space for Toys & Close to Great Recreation!

Build your Custom Dream Home with RV garage, Double-RV garage, Outdoor RV pad, and/or Shop. OR choose from one of our completed Model Homes featuring the latest design trends and amenities.

LARGE LOTS • ROLLING TOPOGRAPHY • GORGEOUS VIEWS



Lisa J. Cunningham
 REALTOR®
 208.562.7887
LisaJCunningham@43re.com

Shaun Urwin
 REALTOR®
 208.989.4811
Shaun@43re.com



LET'S TALK! CONTACT
 OUR ONSITE AGENT:

Wilson Walters, REALTOR® **208.488.9460**
WILSON-WALTERS@43RE.COM



43° NORTH