

Canyon County
Parade of

M-F 5-8PM | SAT 12-8PM | SUN 12-6PM

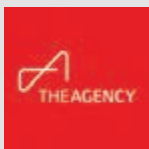
June 16th - June 25th

Homes

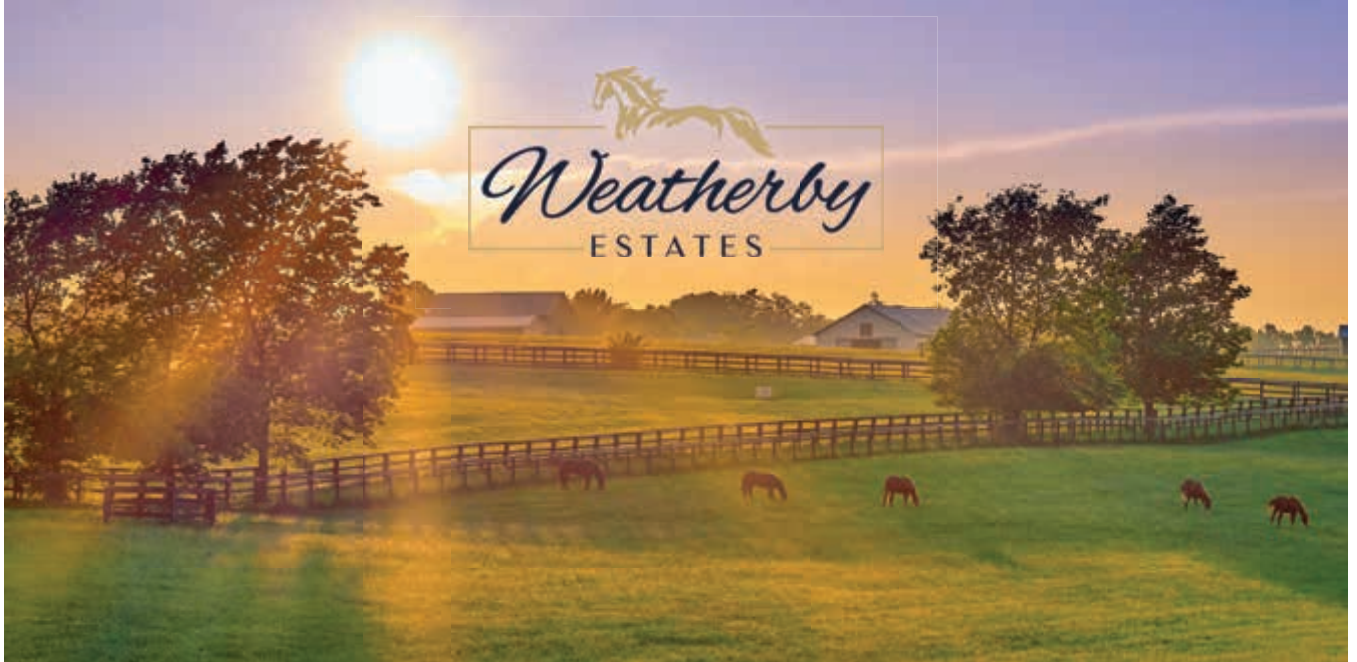
Special Edition



2023



WWW.WEATHERBYESTATES-NAMPA.COM



SPACIOUS COUNTRY LIVING IN NAMPA, ID

NOW AVAILABLE

HOMES STARTING IN THE \$800Ks

15 1-ACRE LOTS | 2-ACRE COMMON AREA | PRESSURIZED IRRIGATION SYSTEM | INDIVIDUAL WELL & SEPTIC

SHOPS & ACCESSORY DWELLINGS PERMITTED



ALISON FULLER
REALTOR®
208.409.0870
alison-fuller@43re.com

TYLER BOSIER
REALTOR®
208.890.4657
tyler-bosier@43re.com



Welcome to the Snake River Valley Building Contractors Association Canyon County Special Edition Parade of Homes



Tyler Bosier

President B&B Custom Homes
2023 Snake River Valley
Building Contractors Association
1st Vice President

Hello, my name is Tyler Bosier. I'm the chairman for the SRVBCA 2023 Canyon County Special Edition Parade of Homes. We would like to welcome you to the SRVBCAs largest fundraising event of the year, most commonly known as the parade of homes.

Please take a moment to recognize the hard work of our home builders, associates, subcontractors, realtors and vendors and the time they have taken to bring this event to life. We hope you enjoy the numerous styles of home designs and products, the home builders have created for 2023.

A special thanks to all the associates, parade of homes committees and all others involved in bringing you the parade of homes in 2023. We look forward to seeing you and thank you for supporting the SRVBCA 2023 parade of homes.

*Sincerely,
Tyler Bosier*



INDEX OF HOMES

1	"THE CAMBRIDGE"6 <i>24439 Himark Way, Caldwell, ID</i>	7	"THE MAGUIRE"34 <i>17647 N. Peltzer Ave., Nampa, ID</i>
2	"SILVERSTONE RANCH" 10 <i>23536 Canyon Lane, Caldwell, ID</i>	8	"THE LARKSPUR" 38 <i>1138 W. Ultar Drive, Nampa, ID</i>
3	"THE PATTERSON"13 <i>8883 Buckshot Ln., Middleton, ID</i>	9	"THE OASIS"42 <i>12975 Shasta Daisy Way, Nampa, ID</i>
4	"THE PEARL"17 <i>11323 Willamette Way, Caldwell, ID</i>	10	"THE HONEYSUCKLE COTTAGE"45 <i>13319 Round Rock Court, Nampa, ID</i>
5	"THE PEWTER"19 <i>18208 N. Begonia Way, Nampa, ID</i>	11	"THE ALINA"49 <i>Virtual Only</i>
6	"THE MAMMOTH"22 <i>18181 Tulip Pl., Nampa, ID</i>	12	"THE MODERN SUMMERVILLE"52 <i>Virtual Only</i>



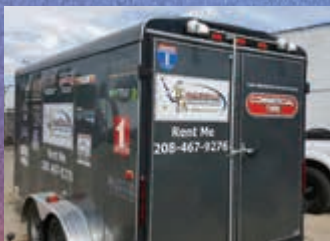
Spike Club Trailer Rental



Contact SRVBCA for more info -- (208) 467-9276 srvbca2@outlook.com

The SRVBCA Spike Club has a Party Trailer for rent! Members and non members can rent this trailer for company or personal, local events. This trailer comes with an adjustable hitch, BBQ grill, griddle, 2-lg canopies with sides, 48 chairs, 8 tables, beverage tub, kegorator, refrigerator, garbage cans, electrical cord, power outlets and BBQ cooking tools.

Optional items (may or may not have additional fee) Propane Tank, 2 additional canopies.



DREAM • DESIGN • BUILD



TAMARACK
CONSTRUCTION

@BUILTBYTAMARCK

BUILTBYTAMARACK.COM

RCE-630

**BERKSHIRE
HATHAWAY**
HOMESERVICES

SILVERHAWK
REALTY

SAM HUFF
GRI

208-724-2025

TRACY KASPER
Broker/Owner

208.867.2709

www.justIMAGINEidaho.com

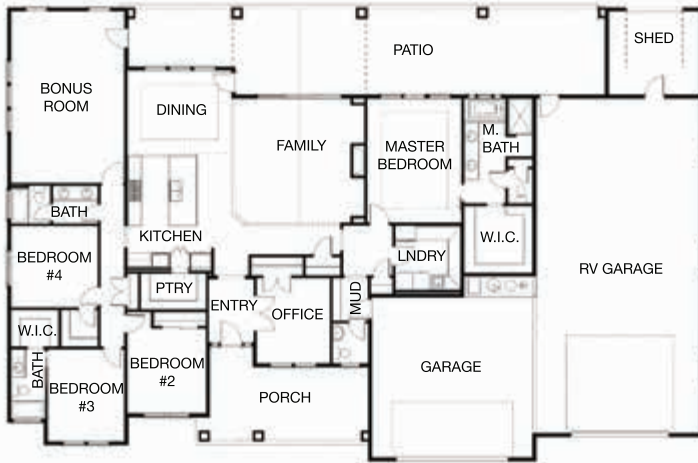


1



"The Cambridge"
24439 Himark Way, Caldwell, ID
By Greencastle Homes

Luxury and comfort abound in the Cambridge by Greencastle Homes. With 4 bedrooms, 3.5 bathrooms, plus an office/bedroom and a main level Bonus Room this floor plan has the space and beautiful details to make your dream home a reality. Featuring an open floor plan, gourmet kitchen with double ovens and hidden walk-in pantry, 10' ceilings and 8' doors throughout, vaulted ceiling with beams in the great room, oversized covered patio, 24'x49' RV bay, and even an attached storage shed!



Builder: Adam Fuhriman 208-559-7424
Subdivision: Purple Sage Estates
Realtor: Aubrey Fuhriman, Nexthome Treasure Valley
Sq. Footage: 3,203
RCE: 33196



GREENCASTLE HOMES



(208)559-7424
GREENCASTLEIDAHO.COM
ADAM@GREENCASTLEIDAHO.COM



Andersen is America's most loved brand of windows and doors!

**SAVE 20% WHEN YOU BUY 3
OR MORE WINDOWS!**

*Any size, installed

JUST MENTION THIS AD WHEN YOU CALL IN

208-376-2200



2023 Andersen Brand Surveys of U.S. realtors, contractors, builders & homeowners

"Andersen" and all other marks where denoted are trademarks of Andersen Corporation. ©2023 Andersen Corporation. All rights reserved.

*Could your bathroom
use a refresh?*

We offer more than windows...

CALL US TODAY
FOR A *FREE*
ESTIMATE



208-402-1068

**NOW OFFERING SHOWER DOORS & MIRROR
REPLACEMENT**





Love open spaces? We do too.

There's never been a better time for country life. So if you're looking to buy or build in the country, we're here to help you get the financing you need.

- Rural Home Loans
- Bare Land Loans
- All-in-One Construction Loans
- Refinancing

Visit AgWestFC.com/countryhomeloans to learn more.



This institution is an equal opportunity provider and employer.

LOOKING

TO PURCHASE


YOUR NEW HOME?

**CONTACT A SPECIALIST FOR ALL
YOUR REAL ESTATE NEEDS**

Melanie
STEINHAUS

HOMES OF IDAHO

 **208-880-5443**

 **Melaniebsteinhaus@gmail.com**

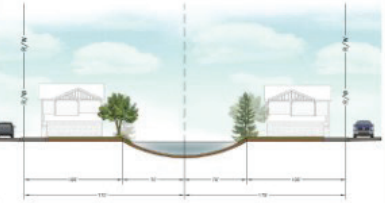


1/2 ACRE LOTS ALONG THE RIVER IN MIDDLETON

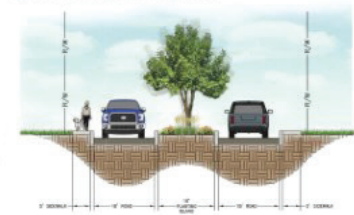


RIVER WALK
RWR
CROSSINGS
CONCEPTUAL, SUBJECT TO CHANGE

TYPICAL LOT SECTION



ENTRY BOULEVARD SECTION



COMMERCIAL LOT'S AVAILABLE

riverwalkmiddleton.com

1 acre lots in Middleton

Timber Hills
Cascade Hills
Purple Sage Estates

1/2 acre - 1 acre lots in Donnelly

Tamarack Falls

Coming Fall of 2023

Green Hills
Ridgeland

More subdivisions coming 2024

HESS
PROPERTIES

Call for lot reservations (208)409-0864 | tyler@hesspropertiesidaho.com

2



“Silverstone Ranch”
23536 Canyon Lane, Caldwell, ID
By Blackstone Homes

Welcome to Silverstone Ranch by Blackstone Homes. This immaculate space is beautifully lined in vaulted ceilings, tasteful beam work, and accent lighting throughout. The Silverstone includes a huge garage, gym, theater room, bonus room, and separate MIL suite. The outdoors are perfect for entertaining guests, with back patios and an outdoor pool that oversees an amazing view of the Owyhees. This home instills soft neutral colors and tones that coordinate and compliment character and personality. Don't miss seeing the design features and craftsmanship of this fresh, new build.



Builder: Charlie Walk 208-800-1615
Interior Designer: Blackstone Homes, Daegan Walk
Sq. Footage: 6,137
RCE: 53440



CHARLIE WALK (208)800-1615 BLACKSTONEIDAHO.COM @blackstoneidaho

Your dream home.

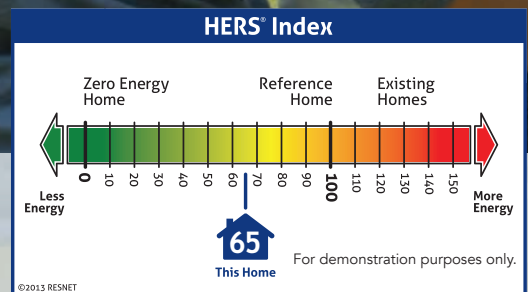
Choose comfort. Choose affordability. Choose energy efficient design.

Natural Gas. The choice is clear.



Whether renovating or relocating, the choice is clear. Natural gas provides safe, reliable, clean energy. More efficient than a standard home, a natural gas home with a low HERS Index score is environmentally friendly and designed to deliver lower energy bills and increased comfort. Ask your builder or look for the HERS Index Score to measure your home's energy performance. Smart choices today, ensure a better tomorrow. Choose natural gas.

Learn more about the HERS Index and Intermountain Gas energy efficiency benefits, rebates and incentives at www.intgas.com/saveenergy.



Want to know how efficient a home truly is? Look for the HERS® Index score.



www.intgas.com



Idaho Power's Residential New Construction Program

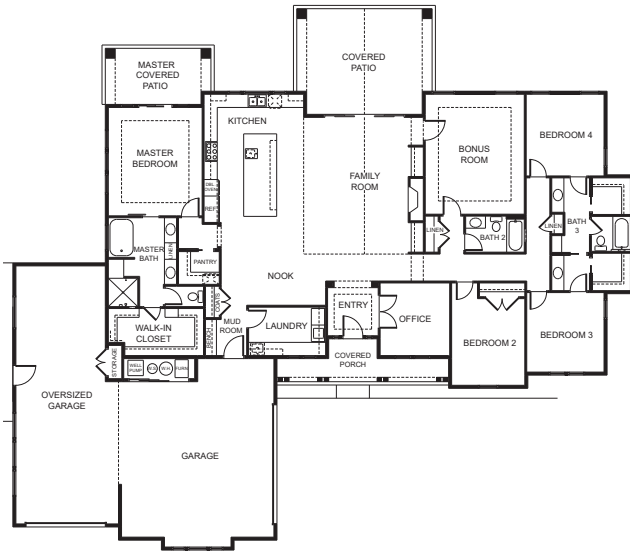
The program helps keep good energy in the room and offers builders a cash incentive to build energy-efficient, all-electric, single-family homes with heat pumps.

Building an energy-efficient home provides increased comfort, lower maintenance costs and a healthier environment.



**GOOD
ENERGY**

idahopower.com/newhomes



“The Patterson”
 8883 Buckshot Ln., Middleton, ID
 By Highland Homes

Enjoy country living at it's finest in this luxurious, Patterson floor plan by Highland Homes! Thoughtfully designed with 4 bedrooms, 3 full baths, a bonus room and office all in 3117 SF! This luxury kitchen features a 12' island, Wolf appliances, quartz countertops, and views! Park your toys in the boat bay and enjoy 1 acre of landscaped paradise!



Builder: Mike Dildine 208-288-2722
Subdivision: Quail Haven
Realtors: Kristin Pugh 704-575-3193
Sq. Footage: 3,117
RCE: 1736



HIGHLANDHOMES
 Dream It. Build It. Love It.

1015 S Bridgeway Pl, Eagle, ID 83616 | Office: 208.288.2722 | New Home Specialist: 704.575.3193



Five & Co.
Homes

DESIGN + BUILD

www.fivecohomes.com

CALL 208-989-7657 TODAY!

YOUR DREAM HOME IS A PHONE CALL AWAY

Five & Co Homes specializes in custom builds, incorporating fresh ideas and elevated collaboration from our team of professionals to exceed our clients' expectations. Contact us today to **bring your vision to life!**

- ✓ BEAUTIFUL
- ✓ CUSTOM
- ✓ MODERN
- ✓ **HOME.**



SCAN ME

208-989-7657 | fivecohomes@gmail.com | instagram @fivecohomes



Call us at (208) 467-0089 or find us online at portapros.com

Treasure Valley region's portable sanitation pros

- Portable restrooms
- Hand wash stations
- Temporary fencing
- And more!



We do it better by doing it different

PortaPros lives by three key core values: **Safety + Relationships + Accountability**. They drive our actions and the way we work with our clients.

95% *Loan-to-Value* ★★ ★

CONSTRUCTION LOANS

FROM AMERICA FIRST

GET MORE FROM FINANCING WITH US

BUILDING YOUR DREAM HOME is easy and affordable when you choose America First. We now offer up to 95% LTV* on new construction loans, which means you can get more funds to create your vision, and take less money from your own pocket.

⊕ Contact your trusted America First mortgage expert at 800-999-3961.



americafirst.com • [f](#) [t](#) [i](#) [v](#)



*Certain criteria apply and are subject to change. Member-direct lending available on approved credit. Loan-to-value (LTV) requirements are based on eligibility, terms & conditions. For a 95% LTV construction loan at 9% annual percentage rate (APR), you will make one lump-sum payment at the end of the loan's term, included in your long-term financing. Federally insured by NCUA. Equal housing opportunity lender.

The best directions
always come from
a local.



And that
includes your
mortgage lender.



Your Mountain West Bank lender is a local you can count on through each step of the lending process. When you want fast results, competitive rates, and service that stays close to home, turn to us. Call, click or stop in.

8 locations in Boise, Meridian, Eagle & Nampa, including:
Residential Lending Center
1660 N. Eagle Rd. | 208-855-9111

Ask about our
**Construction
Financing.**



**Mountain
West Bank**

Today. Tomorrow. Together.

MountainWestBank.com | NMLS #472212



CERTIFIED **MASTER** BUILDER

DOES YOUR BUILDER HAVE THE MARK OF EXCELLENCE?

VISIT OUR CMB'S DURING THE
2023 CANYON COUNTY PARADE OF HOMES

HOME #	
#6	Sunrise Homes 18181 N. Tulip Place
#8	Berkeley Building Co. 1138 W. Ultar Drive Brighton Homes



Find a Builder
You Can TRUST...



VISIT IHBA.ORG TO LEARN MORE



RESIDENTIAL



COMMERCIAL

SAVING
ENERGY
PAYS OFF!



LEARN MORE



FOR A FREE ESTIMATE CALL
208-377-8781
gandginsulation.com

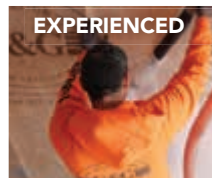


TAX CREDITS ARE AVAILABLE TO HELP COVER YOUR PROJECT COSTS

EXPERIENCED

LOCAL

PROFESSIONAL



MAGIC VALLEY'S ONLY CERTIFIED ENERGY EXPERT®

THE PINK PANTHER™ & © 1964-2023 Metro-Goldwyn-Mayer Studios Inc. All Rights Reserved.
The color PINK is a registered trademark of Owens Corning. © 2023 Owens Corning.

RCE-30614



“The Pearl”

11323 Willamette Way, Caldwell, ID

By Richmond American Homes

The Pearl plan offers two stories of thoughtful living space. A spacious kitchen provides a panoramic view of the main floor – overlooking an elegant dining room and a large great room. You’ll also enjoy a bedroom and full bath located by the entryway. Upstairs, an open loft features access to a laundry room and three bedrooms, including a lavish owner’s suite with a roomy walk-in closet and attached bath.

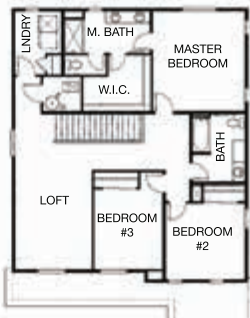
Builder: Richmond American Homes 208-713-7237

Subdivision: Seasons at Mandalay Ranch

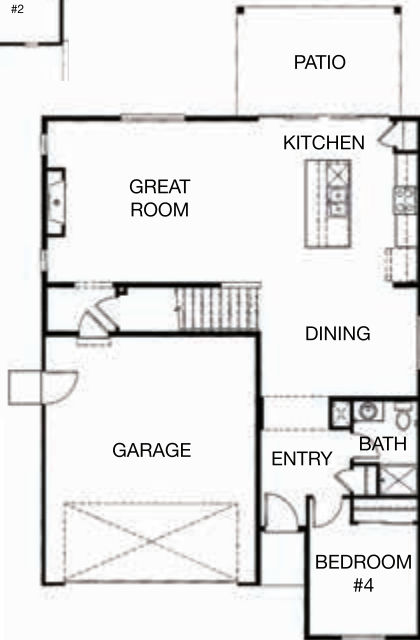
Realtor: Homes of Idaho

Sq. Footage: 2,430

RCE: 57923



UPPER LEVEL



**The five pillars of NAHB membership –
advocacy, expertise, knowledge,
networking and savings –
form the foundation to build your future.**



NAHB’s educational programs and professional designations provide opportunities to improve your skills and advance your career.

Discover opportunities to build relationships with fellow professionals, future customers and suppliers.

Members receive exclusive discounts and private offers on a wide range of products and services offered by many top companies.



www.nahb.org



All encompassing home shades!



BlindAppeal.com • 208-888-1056

Inside: Blinds - Shutters - Cell Shades - Roller Shades - Roman Shades
 Outside: Motorized Screen Shades - Motorized Awnings



New Construction
 Remodel
 Replacement
 Warranty Inspections

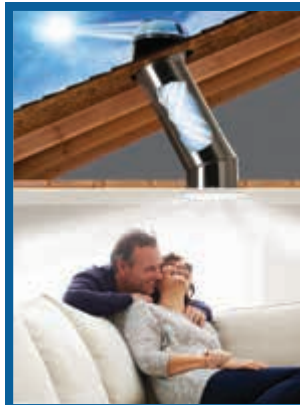
Other Products and Services

- Interior & Exterior Doors • Glass Replacement
- Mirrors • Trim • Decking • Free Estimates
- Free Deliveries in the Treasure Valley

Owner Pam Page

208-375-7940 • pam@pageswindows.com

17408-001



**SOLATUBES
 ATTIC FANS
 SKYLIGHTS
 WHOLE HOUSE FANS**



SOLATURE
Premier Dealer

Idaho's ONLY Solatube dealer since 1995

(208) 377-8399

2053 E. Fairview, Suite 104 • Meridian, ID
www.solar-concepts.com

**THE AGENCY HAS
 ARRIVED IN IDAHO**

Rewriting the real estate rulebook with
 white-glove service at every price point.

The Agency Boise is led by:



MIKE MOIR

Managing Partner

208.850.7495



ROBYN MOIR

Managing Partner

208.890.6379



RACHEL MOIR

Partner

208.919.3969

THE MOIR GROUP

208.900.6960 | BOISE.THEAGENCYRE.COM

1051 S. WELLS STREET, STE. 250 MERIDIAN, ID 83642

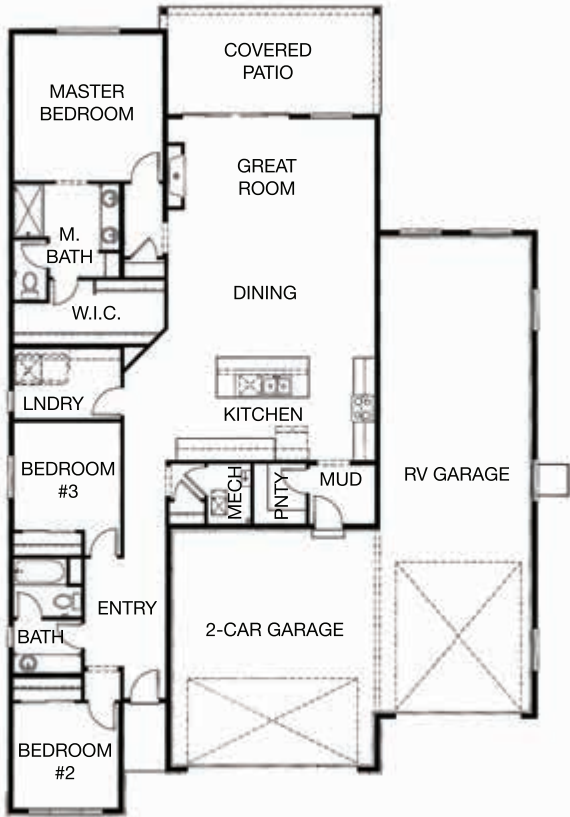
THE AGENCY BOISE IS AN INDEPENDENTLY OWNED AND OPERATED
 FRANCHISEE OF THE AGENCY REAL ESTATE FRANCHISING, LLC.





“The Pewter”
 18208 N. Begonia Way, Nampa, ID
 By Richmond American Homes

The Pewter floor plan includes an RV garage and a two car garage. The interior of the home centers around an open layout with a great room with center meet doors to the covered patio, a dining area and a kitchen with a center island and a large walk-in pantry. Off the great room, the owner’s suite showcases a walk-in closet and a private bath. Two additional bedrooms and a bath round out the residence.



Builder: Richmond American Homes
 208-713-7237
Subdivision: Hartland
Realtor: Homes of Idaho
Sq. Footage: 1,853
RCE: 57923



www.richmondamerican.com/idaho/boise-new-homes



HARTLAND
 NAMPA
 (208) 810-7138

HOPE SPRINGS
 STAR
 (208) 810-7141

NORTERRA
 STAR
 (208) 810-7141

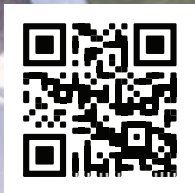
SEASONS AT
MANDALAY RANCH
 CALDWELL
 (208) 810-7141

Free
**EVERY
SATURDAY**

CBH *on The*
BLOCK



Free food trucks
Furnished models
Meet our DREAM TEAM



Scan for details!

CBH HOMES

CBHHOMES.COM/ON-THE-BLOCK

RCE-923

YOU ENVISION IT WE HELP YOU BUILD IT

OUR CONSTRUCTION LOAN OFFICERS WILL HELP YOU BREAK GROUND



**ALAWNA
TOWNS-ATHERON**
(208) 846-7173
www.iccu.com/alawna
NMLS: 522503



ABE BURNS
(208) 985-7370
www.iccu.com/abe
NMLS: 1273503



NATE HILLMAN
(208) 985-7468
www.iccu.com/nate
NMLS: 2120629

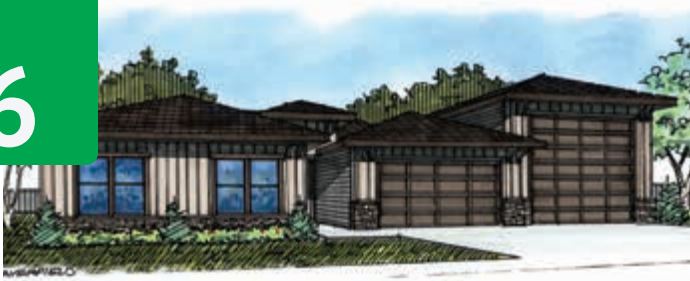


Equal Housing Lender.

Build your dream home with a loan from Idaho Central Credit Union, and let our local Construction Loan Officers help you every step of the way.

- One-time and two-time close options
- Fixed or variable-rate programs available
- Interest-only payments during construction
- Build times from 12 to 20 months
- Land Loans available

Apply with one of our Construction Loan Officers today!

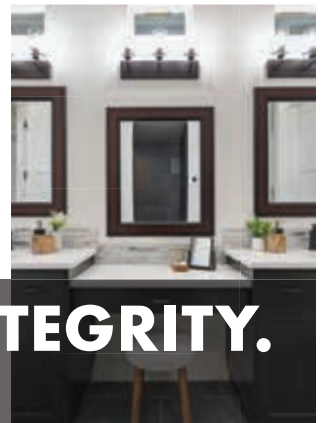
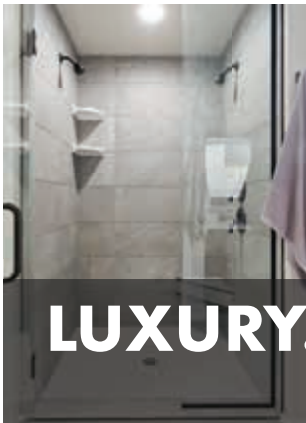


“The Mammoth”
 18181 Tulip Pl., Nampa, ID
 By Sunrise Homes

Sunrise Homes in conjunction with Team Boise brings you the “Mammoth”. A Signature Collection Single Level Home with a 20’ x 58’ garage, the largest RV bay we have ever produced. This one of a kind home features 12’ stepped Beam Ceilings, a true Designer Kitchen, wrap around cabinetry and a Mammoth Pantry! Owners will revel in the Deluxe Spa like Master suite with 6x6 roll in shower, separate make up vanity and his & her sinks with a free standing soaking tub. Chance of a lifetime for a Custom Quality Home with a Super RV/Shop!



Builder: Lance Snyder 208-761-1328
Subdivision: Hartland
Realtor: Dale Alverson, Better Homes & Gardens
 208-863-3093
Sq. Footage: 2,315
RCE: 27116



LUXURY. QUALITY. SERVICE. INTEGRITY.

WWW.SUNRISEHOMESOFIDAHO.COM

**BERKSHIRE
HATHAWAY**
HOMESERVICES
**SILVERHAWK
REALTY**

LUXURY
COLLECTION™

PHASE 3
COMING SUMMER 2023

One Acre Country View Lots

FIBER OPTIC INTERNET · NATURAL GAS · CITY WATER
PRESSURIZED IRRIGATION · INDIVIDUAL SEPTIC SYSTEMS



SAM HUFF
Manager, GRI

208.724.2025
sam@silverhawkrealty.com

A member of the franchise system of BHH Affiliates, LLC

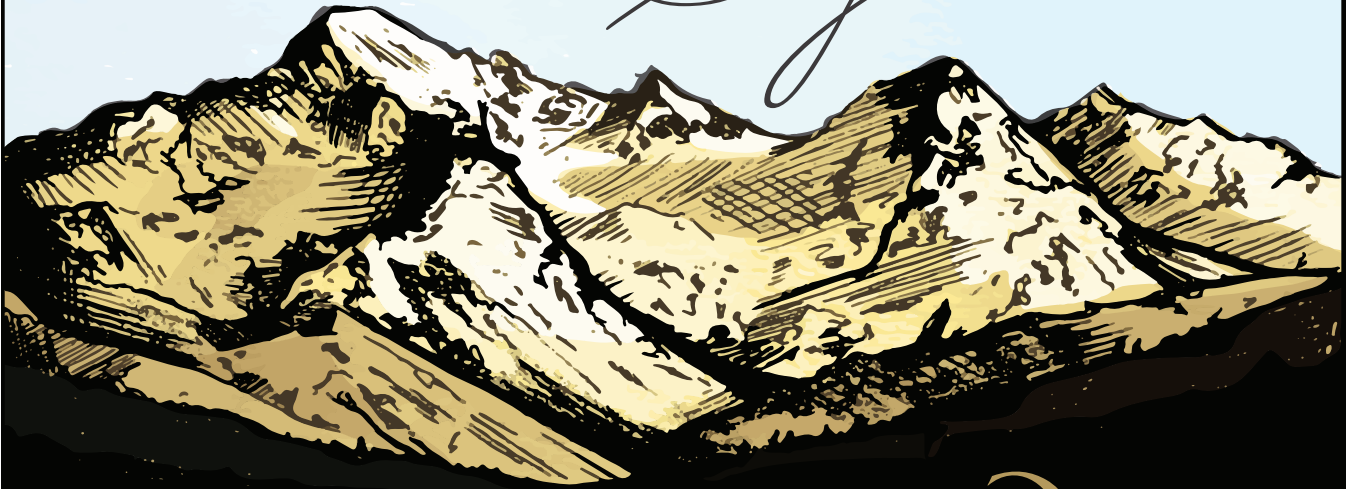
just
IMAGINE
idaho.com

TRACY KASPER
Broker/Owner, CRS, CIPS, SFR, GRI

208.867.2709
tracy@justIMAGINEidaho.com
www.justIMAGINEidaho.com

AN IDAHO

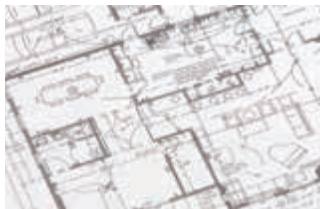
Signature



Serving more communities than ever.
Proud supporter of Canyon County Parade of Homes | TitleOneCorp.com



TitleOne
a title & escrow co.



**Since 1954 Providing Superior Customer Service,
Product Knowledge, Expert Advice, and Everyday Low Pricing
to Do-it-yourselfers and Contractors.**

*Bring us your house plans or just your ideas, and our experienced salespeople will help
pick out the products you need and show you how to install them yourself.*

GROVER'S

PAY & PACK

ELECTRIC AND PLUMBING SUPPLY

DO IT YOURSELF AND SAVE!

NAMPA: 824 Caldwell Boulevard • (208) 466-7807 BOISE: 5730 W Franklin Road • (208) 342-6576
TWIN FALLS: 130 Eastland Drive South • (208) 733-7304 www.groverelectric.com

NEW CONSTRUCTION • REMODEL • MAINTENANCE • REPAIR

ELECTRIC • PLUMBING • LIGHTING • IRRIGATION

LUXURY COMES STANDARD

Countless hours go into understanding your needs when purchasing a new home. This ensures you get exactly what you are asking for. Weary construction minds will be soothed by the attention to detail. At Sunrise Home's we do not cut corners, we work carefully on all our projects, no matter how big or small.

Come see for yourself why different is good!



DASON ALVERSON
REALTOR®
208.340.9772
dason-alverson@43re.com

DALE ALVERSON
REALTOR®
208.863.3093
dale@43re.com



43° NORTH

COMFY PROVIDED BY



The Team Ranked Among
The Top 25 Contractors
in North America
Alheating.com | (208) 343-4445



**Heating
Air Conditioning
& Electric**
Be Warm. Be Cool. Be Comfy.

When one door closes... Call, we'll open another!

Mortgage loans from D.L. Evans Bank



Charlie Connolly
VP Commercial
Loan Officer
Tel 208.442.1011



Don Lillie
Mortgage Loan Officer
Cell 208.794.6394



Lenny Frings
VP Regional Sales Manager
Cell 208.861.4780

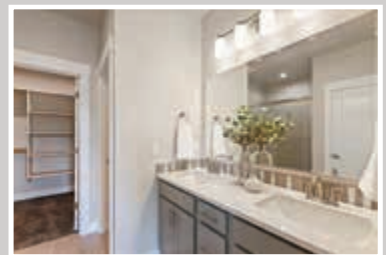
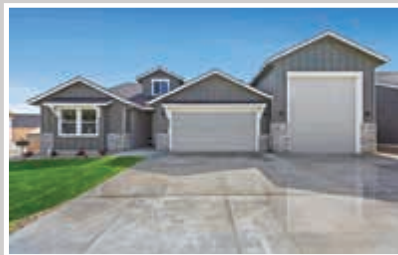
Visit dlevans.com/mortgage to apply today!



**D.L.
Evans**
BANK





Visit one of our communities today!

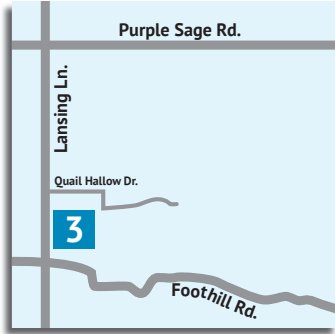
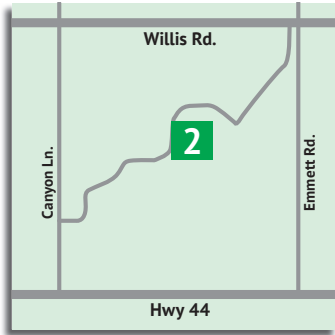
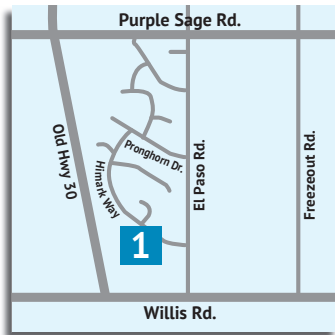


Lava Falls, Nampa & Journeys End, Kuna

 1802 N Midland Blvd
Nampa, ID 83686

 208-475-3304

 HathawayHomesIdaho.com
[@HathawayHomesIdaho](https://HathawayHomesIdaho.com)





HathawayHomesIdaho.com



ABOUT HATHAWAY HOMES INC

Hathaway Homes Inc has been building beautiful, quality homes in Idaho since 2004. We love working with our clients to make their dream home a reality!

➤ HathawayHomesIdaho.com

☎ 208-475-3304

📷 @HathawayHomesIdaho

1802 N Midland Blvd, Nampa, Idaho 83651

**Local lenders.
Local decisions.
Local support.**



Dustin Lopez
Mortgage Sales Manager
NMLS: 542569

bankofidaho.com/home-loans
208.433.4201



DISCOVER HOME

WITH BETTER HOMES AND GARDENS REAL ESTATE 43° NORTH'S NEW CONSTRUCTION EXPERTS



Better
Homes
and Gardens
REAL ESTATE

43° NORTH



43RE.COM

208.381.8000 | INFO@43RE.COM | 3505 E. MONARCH SKY LANE, SUITE 200 | MERIDIAN, ID 83646



PROVEN & TRUSTED

YOUR CANYON COUNTY REAL ESTATE EXPERTS



43° NORTH



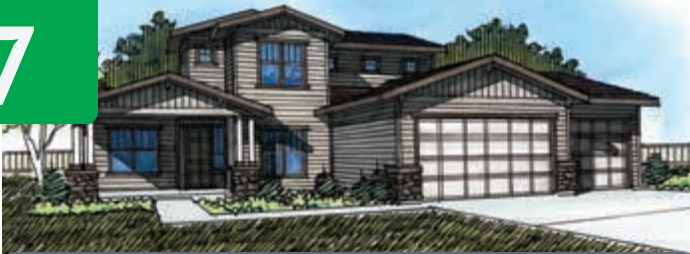
WWW.SLJREALTY.COM



LISA J. CUNNINGHAM | REALTOR®
NEW CONSTRUCTION SPECIALIST
208.562.7887
LISAJCUNNINGHAM@43RE.COM

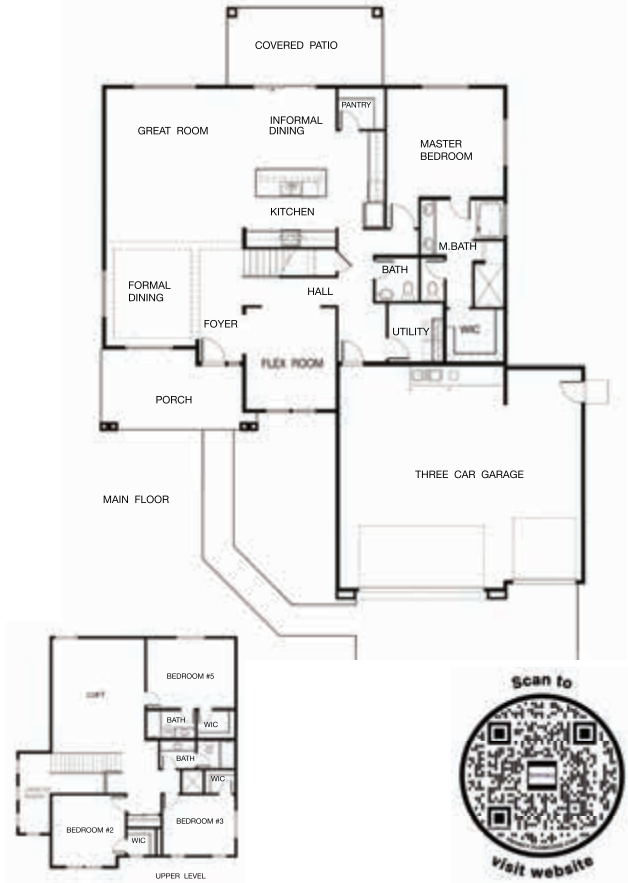
SHAUN URWIN | REALTOR®
NEW CONSTRUCTION SPECIALIST
208.989.4811
SHAUN@43RE.COM

7



“The Maguire”
 17647 N. Peltzer Ave., Nampa, ID
 By Toll Brothers

Welcome to the Maguire at Silver Star featuring a dramatic two-story foyer with views of the great room beyond. The formal dining area, great room and kitchen flow together, making entertaining a breeze. The spacious kitchen features custom two-toned cabinets, quartz countertops, center island and large pantry. The secluded first floor primary bedroom features a full tile walk-in shower with separate soaking tub and generous walk-in closet. Upstairs, a loft, 3 bedrooms with walk-in closets, and 2 bathrooms round out this family home.



Builder: Toll Brothers 208-780-6708
Subdivision: Silver Star
Realtor: Matt Jolley, Toll Brothers Real Estate
 208-780-6729
Sq. Footage: 3,225
RCE: 43104

PARADE
 of
HOMES
 JUNE 16-25



Explore our decorated models and discover endless inspiration for your dream home.

Idaho’s rustic beauty shines at Silver Star, a distinctive Canyon County community offering luxurious Garden and Woodland Collection home designs surrounded by scenic mountain views and appealing amenities. Situated on expansive home sites, some with space for additional RV garages, homes here offer endless options for personalization.

The Maguire Home Design
 2023 Canyon County Parade of Homes Participant
 Versatile open-concept spaces | Luxurious designer-curated finishes

Learn More or Schedule a Tour
IDOnlineHelp@TollBrothers.com or 208-780-6729

Silver Star

VISIT THE MAGUIRE
 17647 N Peltzer Ave | Nampa, ID 83686
TollBrothers.com/SilverStar
 Sales Center & Model Home Open:
 Thursday-Tuesday 10 am-6 pm
 Wednesday 3 pm-6 pm



Prices and offers subject to change without notice. This is not an offering where prohibited by law. Images are for representational purposes only and actual product may differ. See sales representatives for details.





EXTRA-MILE SERVICE. EXTRAORDINARY RESULTS.

Repair and remodel projects need a partner who knows their business is different and works with the same level of hustle, pride, and accountability that they do. Rely on BFS for the quality products, expertise and custom solutions your projects demand. Visit today to see our stock of composite decking, fencing, and railing for your next project.

NEW CALDWELL MILLWORK
EXPANSION COMING SOON!

[BLDR.COM](https://www.blldr.com)



11670 W Franklin Rd • Boise, ID 83709 • 208.376.5500

NEED A MORTGAGE?

We can help!

Our Mortgage Team can walk you through all of your options:

- Quick, Fast Approvals & On-time Closings
- All-In-One Construction Loans
- Buydown, Home Equity, Lot Loans, and ARM (Adjustable Rate Mortgage) Options Available

You can still buy a home in this market – *We can show you how!*



Give a First Federal Mortgage Advisor a call to help you find the best loan for you!



All credit products subject to approval.
Institution NMLS#402963



Mike Kirby
NMLS#400377
208-724-4230



Jake Tolman
NMLS#407777
208-933-3409



Tom Stilinovich
NMLS#16961
208-995-9261



Douglas Myers
NMLS#2068473
208-985-2005



Jolita Swanson
NMLS#518309
208-617-3080



Doug Cook
Reverse Mortgages
NMLS#487433
208-989-0644

(208) 985-2555

1880 S. Eagle Road &
6351 N. Fox Run Way, Meridian

BankFirstFed.com

CUSTOM MARBLE &
Solid Surfaces

Call Today

YOUR SOURCE FOR CUSTOM
GROUT-LESS SHOWERS &
SOLID SURFACE BATH &
KITCHEN SOLUTIONS

208-454-8702
1405 INDUSTRIAL WAY CALDWELL, IDAHO
WWW.CUSTOMMARBLELLC.COM  

 **Custom
Marble**
& solid surfaces

NOW SELLING!

VALOR

A LUXURY MASTER PLANNED COMMUNITY





AMENITIES

36 Holes of Golf | Sprawling Home Sites | Multiple Community Clubs | Resort Pools
Community Pathways | Fitness Centers | Bocce Court | Tennis Courts | Pickleball
Courts | Reveille All Age Community | Trilogy® by Shea Homes®, a Private Gated
55+ Resort Community within VALOR Master Plan

Proudly Developed By:



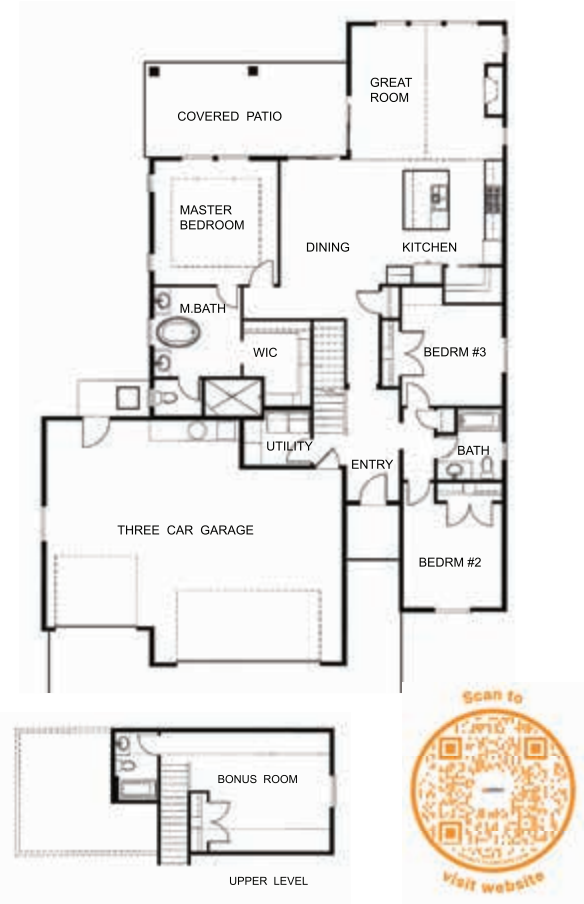
VALORIDAHO.COM



“The Larkspur”
 1138 W. Ulta Drive, Nampa, ID
 By Berkeley Building Co.

The Larkspur by Berkeley Building Co. is an excitingly unique single level plan with an upstairs bonus offering a myriad of living options. Adorned with sharp navy accents that are warmed by light wood tones throughout... this timeless design is mood inducing and creates the perfect backdrop for an upscale lifestyle experience. All set in the stunning Summit Ridge new home community with community pool and views. Don't miss seeing this beautiful home in person.

Builder: Jenna Englund 208-995-2885
Subdivision: Summit Ridge
Realtor: Mike Moir, 208-850-7495, The Agency Boise
Sq. Footage: 2,200
RCE: 3907



THIS IS OUR 'WHY'



At Berkeley Building Co. we build more than homes...we build community. We are invested in paying it forward in a way that truly means something to us and those we serve. We are honored to support organizations that support families in their most challenging times. This is our passion. *THIS IS OUR 'WHY'.*



Every Berkeley home purchased helps support these organizations in a meaningful way:






AR *design*

AUBREY ROSE

SOCIAL MEDIA MANAGER
BASED IN BOISE, IDAHO

Your one stop shop for all things social media. From creating and designing content, to posting and gaining exposure to your social media platforms while spreading YOUR personalized organic message!

 208.989.8973

 aubreyrosedesign@gmail.com

- Content Creating & Design
- Content Strategy
- Reels & TikToks
- Digital Marketing

SPECIALTIES

A new home to create more memories.

Complete your mortgage application online in minutes at p1fcu.org.



NMLS ID #527990



SERVING ALL OF IDAHO SINCE 1954



U.S. Retailer of the Year!

floor covering news

CARPET | LVT | LAMINATE | TILE | HARDWOOD | GRANITE AND QUARTZ

www.nampafloors.com

QUALITY HOMES BUILT ON-YOUR-LAND



SIMPLICITY
BY HAYDEN HOMES

WHY BUILD WITH SIMPLICITY? [Learn More](#)

- Build a quality home at an exceptional value
- We manage the most stressful segments of your build
- Choose and design your floor plan online to receive fast, accurate pricing
- Our Inclusive Features will save you thousands of dollars!



208.291.6805 SIMPLICITY-HOMES.com

OR-CCB-185357



“The Oasis”

12975 Shasta Daisy Way, Nampa, ID

By Solitude Homes

The heart of “The Oasis” lies in its beautifully landscaped backyard, featuring a sparkling pool to unwind and relax under the sun-kissed skies. Connecting seamlessly to the entertainment area, the downstairs boasts a convenient garage door. Solitude Homes includes a dedicated dog run, ensuring that every family member can enjoy their own space. “The Oasis” also boasts a fully equipped gym, offering residents the convenience of a private fitness sanctuary right within their own home. Emerging as a true haven, where tranquility and entertainment converge to create an unparalleled living experience.

Builder: Cody Weight 208-724-0555

Subdivision: Wild Prairie Estates

**Realtor: Jennifer Hickey Spotlight Real Estate
208-724-6124**

Sq. Footage: 2,919

RCE: 22662



Your home building dream team!



SOLITUDE HOMES
PEACE WHERE IT MATTERS MOST



If you can dream it, we can build it!

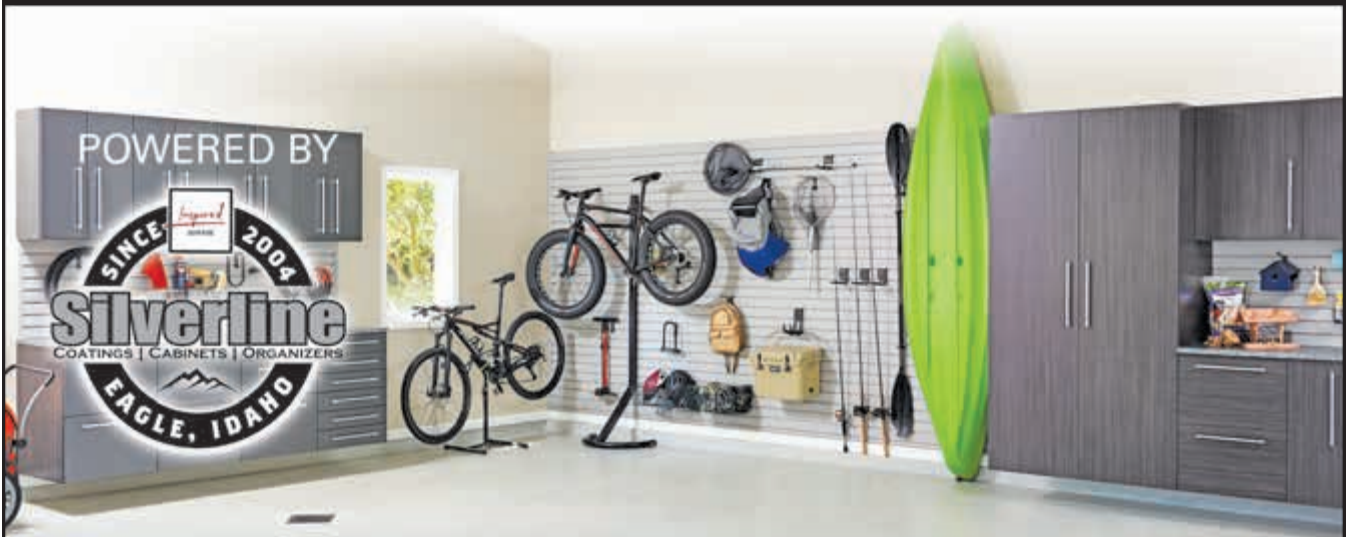
BuyBuildBoise.com

(208) 684-0000

CLOSETS • MURPHY BEDS • HOME OFFICE



COATINGS • CABINETS • ORGANIZERS



POWERED BY



BE INSPIRED...

COME VISIT OUR SHOWROOM ON THE NORTH EAST
CORNER OF EAGLE AND CHINDEN.

3210 E. CHINDEN BLVD., STE. 111, EAGLE, ID 83616
(208) 888-4176 • WWW.INSPIREDCLOSETSBOISE.COM
WWW.SILVERLINESYSTEMS.COM

127316-002

NAMPA

APPLIANCE TV & MATTRESS



*G*orgeous design, impeccable craftsmanship, flawless attention to detail, Energy Star certified efficiency. This is why **Nampa Appliance TV & Mattress** is proud to offer **Bosch & Thermador** appliances. We invite you to come experience our new kitchen design center home today!

.....

278 Caldwell Blvd • Nampa, ID • 83651
208.465.0551
www.nampabrandsource.com

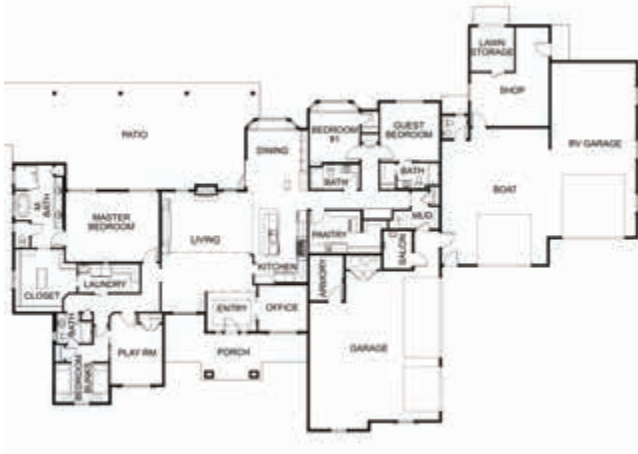
.....

**Monday - Friday 9-6,
Saturday 10-6, Sunday Closed**

SHILOH KEO AUTOGRAPH SIGNING



Meet Shiloh Keo, New District Sales Manager at Bosch & Thermador Home Appliances. He will be signing autographs and taking pictures at Larry Richardsons Parade Home on June 16th, 5pm to 8pm. Shiloh is a former NFL Super Bowl Champion with the Denver Broncos. After retiring from the NFL Shiloh went into coaching, where he won a national championship under Nick Saban and the Crimson Tide at the University of Alabama. Shiloh also played college football for the Idaho Vandals and is married with Five Children.



“The Honeysuckle Cottage”
 13319 Round Rock Court, Nampa, ID
 By Larry Richardson Construction

Spacious and elegant 5 bedroom home built for entertaining and an active family. Graciously appointed gourmet kitchen. Massive garage with room for all of the family toys.

Builder: Larry Richardson 208-713-7476
Subdivision: Lone Star Ranch
Realtor: Sam Huff, Berkshire Hathaway HomeServices
 208-459-4326
Sq. Footage: 4,313
RCE: 34667



larryrichardsonconstruction@gmail.com



A HANDS-ON BUILDER
 208.713.7476

RCE-34667

SAM HUFF GRI
 208.724.2025

TRACY KASPER BROKER/OWNER
 208.867.2709

BERKSHIRE HATHAWAY
 HOMESERVICES
 SILVERHAWK REALTY



NEW HOMES

in the Treasure Valley



BUILDING A STRONG COMMUNITY

From the very beginning, our focus at Hayden Homes has been on building quality homes and a strong community in equal measure. For over 30 years, we've partnered with nonprofits, provided the dream of homeownership to deserving families and empowered every team member to be the next generation of givers. We call it Give As You Go™.

With new home communities throughout the Pacific Northwest, we offer new homes that fit your needs and budget at any stage of life.

Starting your new home journey is easy. Visit us online to learn more about new homes in the Treasure Valley!

www.HAYDEN-HOMES.com





KitchenAid

BRING YOUR VISION TO US

The experts at Ferguson Bath, Kitchen & Lighting Gallery are here to help create a home that's as extraordinary as you are.

Any project, any style, any dream—bring your inspiration to fruition at Ferguson Bath, Kitchen & Lighting Gallery. Visit build.com/ferguson to schedule your personalized showroom experience today.

YOUR LOCAL SHOWROOM:
MERIDIAN

ACTION GARAGE DOOR

“A choice you’ll
never regret”

Repair
Service
Installation
**Garage Doors
& Openers**
Residential
Commercial



(208) 466-1400
Serving the Treasure Valley and
Surrounding Areas!
www.actiongaragedoor.net

The Screen That Does Not **SNAP** Back!



BOISE CLEARVIEW

Gem State
Retractable Screens

FREE ESTIMATES!

MADE IN AMERICA

WE ALSO INSTALL POWER & SECURITY SCREENS

**\$2500
OFF**

EACH
RETRACTABLE
SCREEN DOOR

With coupon only. Must present coupon at time of estimate.
Cannot combine offers. Expires 7/4/23

9165 Chinden Blvd. #105, Garden City
208-391-5750 BY APPOINTMENT ONLY

**A HOME IS
MORE THAN
JUST A
FLOOR PLAN.**

It's where
homeownership
dreams come true!
Preserve your home
and future by protecting
your property rights.

Yes, it matters where you close.



Star Nieves
VP & General Manager
1005 W Sanetta St.
Nampa, ID 83651
208-465-6600



ALLIANCE
TITLE & ESCROW



“The Alina” VIRTUAL ONLY

By Solid Rock Homes

Welcome to this beautifully detailed, handcrafted, majestic piece of paradise located just 3 miles out of Star, ID. As you enter the home right away the view all the way to the mountains will catch your eye. If that doesn't, then the outdoor pool and entertainment area surely will. The open floor plan flows from one room to the other in an inviting way. Feeling competitive? The 600 sq ft game room, outdoor putting green, or the half court "sport court" are all waiting for your competitive edge! Every detail large or small will grab your attention. From the beautiful hardwood floors to intricately cut tile designs, no detail has been overlooked.

Builder: Randy Neary 208-573-5268
Realtor: Mike Moir 208-890-6379, The Agency Boise
Sq. Footage: 10,005
RCE: 361



UPPER LEVEL



*Building Dreams...
One Home at a Time*

Our standard is not how many homes we can build, but how much quality we can put into each home. Our goal is to build a quality home of lasting value that you will enjoy for many years.

Tour one of our homes and you will find that our sense of pride and commitment is apparent in every home we build. Our homes are thoughtfully designed, open, and airy with elegant detail. Contact us for all of your building and consulting needs at 208-573-5268 or rneary@solidrockhomes.net.

THE MOIR GROUP



Professional Installation Since 1951



**Atkinson's
MIRROR & GLASS**

www.atkinsonsmirrorandglass.com

**24 Hour Emergency
Repair & Boardup**

- New & Replacement Windows & Doors
- Tub & Shower Enclosures
- Custom Mirrors & Glass Work
- Skylights & Atriums
- Energy Efficient Windows

www.atkinsonsmirrorandglass.com

208-375-3762



Delivery Service • Financing Available (OAC)

909 N. Orchard Street • Boise

YOUR DOWNTOWN NAMPA PRINTSHOP!

DARLENE'S
PRINTING
An Employee Owned Company

Digital Printing and Offset - Forms, Envelopes, Brochures
 Promotional Products - Pens, Bags, Apparel and More
 Graphic Design - Business Cards, Logo Design, Postcards
 Wide Format - Banners, Stickers, Posters, Blueprints
 ... and so much more

**A Hometown Printer Taking Care
of Our Local Customers Since 1995**



1224 2nd Street South • Nampa, ID 83651
orders@darlenesprinting.com
frontdesk@darlenesprinting.com

208-465-6155
www.darlenesprinting.com



FROM START TO FINISH

WE MAKE BUILDING EASY FOR
OUR CONTRACTORS



47 YEARS
OF SERVICE
TO OUR
CUSTOMERS

www.franklinbuildingsupply.com

4523 E Cleveland Blvd, Caldwell, ID 83605 ■ 208-454-8626



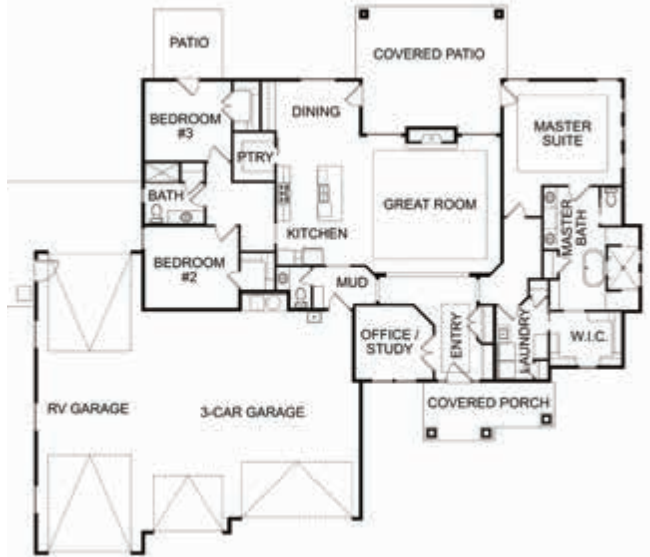
12



“The Modern Summerville” VIRTUAL ONLY

By Hathway Homes

The Modern Summerville features an office, three bedrooms, 2.5 bathrooms and tons of space for entertaining – all on one level! This home sports a 20’ x 14’ covered patio, a large pantry with outlets, a fireplace with floor to ceiling tile, dual zoned HVAC system for extra comfort, laminate wood flooring throughout, a walkthrough tile shower with dual shower heads in the primary bathroom, and more! And don’t forget your toys! The 1,178 sq ft garage features a 44 ft deep RV bay, epoxy floors, full insulation, drywall and paint.



Builder: Greg Hathaway 208-475-3304

Realtor: Hathaway Homes, Inc. 208-475-3304

Sq. Footage: 2,620

RCE: 56730



MLD

Appliances Plumbing Hardware

Utah | Idaho | Wyoming



MLD.COM

***Uniting the
Building Industry,
Constructing
the Future***



Since 1971 the mission of the Snake River Valley Building Contractors Association is to unite the building industry and draw upon the collective strengths, talent, and commitment of its members to enhance their professionalism and improve the overall business climate. The SRVBCA believes that through the efforts of a strong, professional building industry, that the needs of the community for quality, affordable housing can be met.

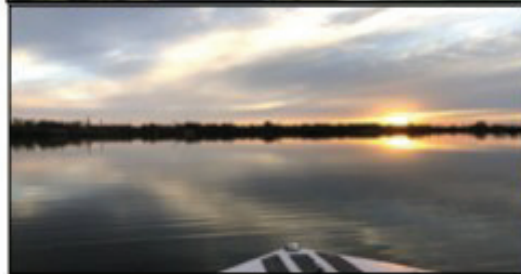
Membership provides a unique opportunity for you to help shape the future of your business and the home building industry.

Your membership begins at the local level.

By joining locally, you automatically become a member of the Idaho Building Contractors Association (IBCA) and National Association of Home Builders (NAHB).

TO JOIN CONTACT US TODAY

www.srvbca.com



La Bella Vida is the home you've been waiting for. Created for boating families who love to play!

3 lakes, pickleball court, soccer field, & community shop. 1 lot left.



KYLE COOPER
INSPIRE | CONNECT | ENCOURAGE

LaBellaVidaLakes.com
208.870.1943



ALDER RIDGE
CUSTOM HOMES



NATALIE WALTMAN
Owner | President

BUILT BY DESIGN.
DESIGNED TO INSPIRE.

AlderRidgeHomes.com

PROUDLY REPRESENTED BY:



Spotlight Real Estate

Your local new construction real estate experts.
buying - selling - building - development - investing - resale



208.577.7777



VISIT BUYBUILDBOISE.COM TO SEE MORE ABOUT OUR AMAZING BUILDERS AND VIEW AVAILABLE HOMES, OR SCAN AND CLICK HERE



We Build More Than Homes. We Build...
MEMORIES



SCAN QR CODE TO VIEW
AVAILABLE HOMES



  FOLLOW US ON SOCIAL:
@BERKELEYBUILDINGCO

NEW HOMES NOW AVAILABLE

