

Canyon County Parade of Homes

M-F 5-8PM | SAT 12-8PM | SUN 12-6PM

June 17th - June 26th



2022

Snake River Valley Building Contractors Association, Inc.





you can have it all

CRESCENT LAKE

ENJOY THE **SMALL TOWN FEEL** OF MIDDLETON, IDAHO COMBINED WITH EASY ACCESS TO **BIG CITY AMENITIES**. ONLY 30 MINUTES FROM BOISE.

CRESCENTLAKEIDAHO.COM



43° NORTH  

LISA J. CUNNINGHAM | 208.562.7887
REALTOR®, NEW CONSTRUCTION SPECIALIST

SHAUN URWIN | 208.989.4811
REALTOR®, NEW CONSTRUCTION SPECIALIST

WILSON WALTERS | 208.488.9460
REALTOR®, NEW CONSTRUCTION SPECIALIST

The Snake River Valley Building Contractors Association is proud to present to you this year's 2022 Canyon County Parade of Homes.



Mercedes Mascorro Broomhall
SRVBCA Executive Officer

The Snake River Valley BCA, is a political association with a goal to unite the building industry and draw upon the collective strengths, talent and commitment of its members to enhance their professionalism and improve the overall business climate. The SRVBCA believes that through the efforts of a strong, professional building industry, that the needs of the community for quality, affordable housing can be met.

The last few years have been quite challenging for everyone, in particular the building industry. Our association has a strong leadership that is active in the issues that arise, which affect not only our industry but our

communities regarding sustainable housing. Including representation in our cities/jurisdictions through builder developer councils and communications with our building officials and commissioners.

We are proud to highlight a few of our 60+ builders that are members of the SRVBCA in this year's Canyon County Parade of Homes along with their subs that worked effortlessly to provide this showcase of homes for you.

If you are interested or have questions about the SRVBCA please reach us through our website www.srvbca.com

*Thank you,
SRVBCA Executive Officer*

**Your big plans
for your new home
don't necessarily require
a big bank.**



INDEX OF HOMES

1. "THE OWYHEE"6
25388 Bur Oak Place, Caldwell, ID
2. "THE SAGE"8
25296 Bur Oak Place, Caldwell, ID
3. "WHITESTONE"12
23980 Timberhill Road, Caldwell, ID
4. "THE HOLLAND"20
8132 Fountain Brook Street, Middleton, ID
5. "THE BUCKAROO"25
20151 Carbondale Avenue, Caldwell, ID
6. "THE WALLOWA"32
3608 S. Julianite Avenue, Nampa, ID
7. "THE BRYSON"35
3624 S. Julianite Avenue, Nampa, ID
8. "MODERN PRAIRIE"38
10855 Pelican Lane, Nampa, ID
9. "DARCI"45
1255 W. Tenzing Court, Nampa, ID
10. "CARSON"49
1194 W. Tenzing Court, Nampa, ID
11. "BROOKLYN"52
128 S. Beechwood Drive, Nampa, ID



Just a better bank.

**Residential
Lending Center**
1660 N. Eagle Rd.
208-855-9111



**Mountain
West Bank**

Today. Tomorrow. Together.

MountainWestBank.com NMLS #472212 **FDIC** | **Mortgage**



THE MARKETING COMPANY FOR BUILDERS

INFO@ONITMARKETING.COM | 208.856.8639

Home lending with a ❤️.



Dustin Lopez
Mortgage Sales Manager
NMLS: 542569

Alyce and Denny Wagstaff
Bank of Idaho's
first Treasure Valley clients

Tony Vahsholtz
VP/SBA Dept. Manager

bankofidaho.com
BOISE • NAMPA 208.433.4201



Member FDIC NMLS# 472649

1



“The Owyhee”

25388 Bur Oak Place Caldwell, ID

By Idaho Impact Homes

Idaho Impact Homes brings you a customized version of their Owyhee plan featuring their Contemporary package! Open, split living arrangement homes with 3 beds + office/3.5 baths is a must see! The upgraded landscape package demands attention before you step out of the car and is highlighted by a sunken fire pit. 10 foot ceilings, a wet room in the primary bathroom, 4 panel sliding glass door and a fully finished garage are sure to make your list of must haves in your next home!

Builder: Dustin Riggs 208-369-0446 RCE-

Subdivision: Oak Ridge Estates

Realtor: Dustin Riggs 208-369-0446, Homes of Idaho

Interior Designer: Krishina Riggs, Idaho Impact Homes

Sq. Footage: 2,604 / RCE-51122



INSTANT INFO

TEXT TO: 88000 MSG: SRV1



Powered by drivebytech.com



IDAHO IMPACT

Homes

Facebook icon Instagram icon @IDAHOIMPACTHOMES

WE BUILD HOMES ON ACREAGE



Creating Communities that Enhance Country Living



Hess properties is a local development company that focuses on creating communities in Canyon County with a country feel. We have some of the best engineers and contractors on our projects, all working hard to bring to life our vision of beautiful neighborhoods that people love to call home. Working with some of the best builders in the area to combine a community for all to enjoy!

PREMIER ONE ACRE LOTS IN AND AROUND MIDDLETON



PURPLE SAGE
ESTATES

RIDGELAND

TIMBERHILLS

CASCADE
Hills

(208) 409-0864 | tyler@hesspropertiesidaho.com

2



“The Sage”

25296 Bur Oak Place Caldwell, ID

By Idaho Impact Homes

Idaho Impact Homes brings you a customized version of their Owyhee plan featuring their contemporary package! Open, split living arrangement home with 3 beds + office/3.5 baths is a must see! The upgraded landscape package demands attention before you step out of the car and is highlighted by a sunken fire pit. 10 foot ceilings, a wet room in the primary bathroom, 4 panel sliding glass door and a fully finished garage are sure to make your list of must haves in your next home!

Builder: Dustin Riggs, 208-963-1162

Subdivision: Oak Ridge Estates

Realtor: Dustin Riggs, Homes of Idaho 208-369-0446

Sq. Footage: 2,604 / RCE-51122

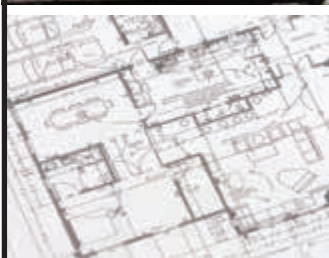


INSTANT INFO

TEXT TO: **88000** MSG: **SRV2**



Powered by drivebytext.com



NEW CONSTRUCTION REMODEL MAINTENANCE REPAIR

ELECTRIC • PLUMBING • LIGHTING • IRRIGATION

Since 1954 providing Superior Customer Service, product knowledge, expert advice, and everyday low pricing to Do-it-yourselfers and Contractors.

GROVER'S

PAY & PACK

ELECTRIC AND PLUMBING SUPPLY

Bring us your house plans or just your ideas, and our experienced salespeople will help pick out the products you need and show you how to install them yourself.

DO IT YOURSELF AND SAVE!

NAMPA: 824 Caldwell Boulevard • (208) 466-7807 **BOISE:** 5730 W Franklin Road • (208) 342-6576
TWIN FALLS: 130 Eastland Drive South • (208) 733-7304 www.groverelectric.com

**A HOME IS
MORE THAN
JUST A
FLOOR PLAN.**

It's where
homeownership
dreams come true!
Preserve your home
and future by protecting
your property rights.

Yes, it matters where you close.



Star Nieves
VP & General Manager
1005 W Sanetta St.
Nampa, ID 83651
208-465-6600



ALLIANCE
TITLE & ESCROW



208-463-9433



Have It Done Right The First Time

**PAGES
WINDOWS**

BUILDING FOUNDATIONS

How can our new construction experts help you?



**Better
Homes**
and Gardens.
REAL ESTATE

43° NORTH



43RE.COM

208.381.8000 | INFO@43RE.COM | 3505 E. MONARCH SKY LANE, SUITE 200 | MERIDIAN, ID 83646



PROVEN CANYON COUNTY EXPERTS

Representing 25 Builders in 12 communities



1,262
Home Sales



505
Lot Sales



See how our expertise can work for you at SLJREALTY.COM



43° NORTH

LISA J. CUNNINGHAM

REALTOR®, NEW CONSTRUCTION SPECIALIST
208.562.7887 • LISAJCUNNINGHAM@43RE.COM

SHAUN URWIN

REALTOR®, NEW CONSTRUCTION SPECIALIST
208.989.4811 • SHAUN@43RE.COM

3



“Whitestone”

23980 Timberhills Road Caldwell, ID

By Blackstone Homes

Blackstone Homes presents the Whitestone Model, a New Modern American Custom Home. This inviting home brings elements of luxury and comfort with its ornate warmth and tones. It’s striking design carries clean lines with tasteful white, black and wood pallets throughout. The barrel ceiling, vaults, private entry, built-ins, and slab cabinetry are a few of the opulent features that speak to the aesthetics of this build. It demonstrates class, ingenuity, with new features to the modern eye. We hope you enjoy the freshness and spark of this defined space.

Builder: Charlie Walk, 208-800-1615

Subdivision: Timber Hills

Developer: Hess Properties

Realtor: Arrow Tallman 208-340-9277, Real Estate by Arrow & Co

Interior Designer: Deagan Walk, Blackstone Homes

Sq. Footage: 3,306 / RCE-53440



INSTANT INFO

TEXT TO: 88000 MSG: SRV3



Powered by drivetobuytech.com



BLACKSTONE HOMES



CHARLIE WALK

(208)800-1615

BLACKSTONEIDAHO.COM



@blackstoneidaho



SEKADY

Local construction solutions for local Builders.

- ✓ Construction Lending
- ✓ Project Management Platform
- ✓ Digital Lien Waiver Collection
- ✓ Accounts Payable Automation

Building in Idaho gets more challenging and complex by the day.

Let Sekady show you how we help builders improve their efficiencies and profitability in an increasingly competitive landscape.

Sekady has provided lending solutions to Builders throughout the Treasure Valley since 2009, since then we've launched our Accounts Payable Automation platform and our Project Management platform. **Our mission is to create simple, yet innovative solutions to empower and connect all within the construction community.**

Let us help you fund and manage your projects, while helping you eliminate the manual processes that slow them down.

Call 208.452.1910 or visit us at www.Sekady.com

Professional Installation Since 1951



**Atkinson's
MIRROR & GLASS**

www.atkinsonsmirrorandglass.com

**24 Hour Emergency
Repair & Boardup**

- New & Replacement Windows & Doors
- Tub & Shower Enclosures
- Custom Mirrors & Glass Work
- Skylights & Atriums
- Energy Efficient Windows

www.atkinsonsmirrorandglass.com

208-375-3762



Delivery Service • Financing Available (OAC)

909 N. Orchard Street • Boise



MINA PINA
SILVERCREEK REALTY GROUP

(208) 412-1683

minapinarealestate@gmail.com
Silvercreek Realty Group
1090 S. Wells Street
Meridian, Idaho 83642



Client focused. Results Driven. Helping you unlock the possibilities!

Mike Grim
REALTOR®

208.789.3963
mikeg@windermere.com
mikeg.withwre.com



FIRST AMERICAN TITLE

Working with you from contract to close.

LOCAL EXPERIENCE | NATIONAL STABILITY



First American Title™

1125 2nd ST. S., #100
Nampa, ID 83651
PHONE 208.546.3613

2150 S. Bonito Way, #100
Meridian, ID 83642
PHONE 208.375.0700

738 Bridgeway Pl., Ste. 150
Eagle, ID 83616
PHONE 208.938.6740

1161 W. River St., Ste. 150
Boise, ID 83702
PHONE 208.501.7664

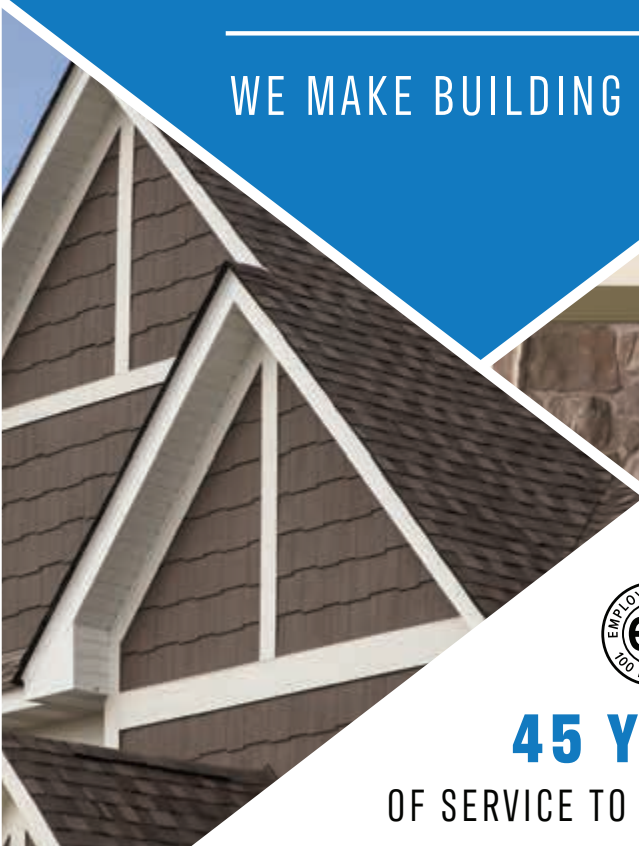
www.firstamidaho.com

©2022 First American Financial Corporation and/or its affiliates. All rights reserved. | NYSE: FAF | 14256700422



FROM START TO FINISH

WE MAKE BUILDING EASY



45 YEARS

OF SERVICE TO OUR CUSTOMERS



www.franklinbuildingsupply.com

Hardwood · Laminate · Vinyl · Carpet · Granite · Cabinets · Window Coverings

Dillabaugh's

Flooring America

where friends send friends™



BOISE

2895 S FEDERAL WAY
208.287.2487

BOISE

11522 W FAIRVIEW AVE.
208.287.4447

NAMPA

323 12TH AVENUE SOUTH
208.467.4400

DILLABAUGHSFLOORINGAMERICA.com



FREE moving truck when



you buy or sell with us



Professional



Home Staging

Proud to support the
Snake River Valley BCA
& The Parade of Homes

— Since 1978 —
HONESTY | OPTIMISM | INTEGRITY

- 148 N. Yale Street, Nampa
- 714 Main Street, Caldwell
- 320 E. Main Street, Middleton
- 137 N. Whitley Drive, Fruitland
- 333 N. Avenue C, Kuna
- 101 Canal Street, Emmett
- 5418 N. Eagle Road, Suite 180, Boise
- 7470 W. State Street, Boise
- 3031 S. Cole Road, Boise



RESIDENTIAL

COMMERCIAL



CERTIFIED ENERGY EXPERT
TRAINED, TESTED, TRUSTED.

BUY IDAHO
PRODUCTS & SERVICES

FOR A FREE ESTIMATE CALL
208-377-8781
gandginsulation.com

Call G&G for Year-Round Comfort & Energy Savings

Fiberglass • Spray Foam • Radiant Barrier • Air Sealing

EXPERIENCED LOCAL PROFESSIONAL

THE TREASURE VALLEY'S ONLY CERTIFIED ENERGY EXPERT®

THE PINK PANTHER™ & © 1964-2022 Metro-Goldwyn-Mayer Studios Inc. All Rights Reserved.
The color PINK is a registered trademark of Owens Corning. © 2022 Owens Corning.

RCE-30614

WHEN YOU LOOK FOR **QUALITY SERVICE...** LOOK FOR US.



208.318.1100 | 1532 11TH AVE N, NAMPA, ID 83687



Heating Air Conditioning & Electric
Be Warm. Be Cool. Be Comfy.



AT YOUR SERVICE FOR MORE THAN 60 YEARS

Meridian: (208) 343-4445

McCall: (208) 634-1586

WWW.A1HEATING.COM

FIRST HOME OR FOREVER HOME, WE'VE GOT THE LOAN.



Whether building, buying, or moving up, Idaho Central Credit Union has the home loan to fit your needs.

- Fast approvals and closings
- Special first-time homebuyer loans
- No-fee and low-cost loan options
- IHFA, FHA, VA, and Rural Housing loans
- Construction loans available
- #1 Mortgage lender in Idaho*

Apply online or stop by your local branch.



*Based on 2021 Idaho county data.

WE BELIEVE home really is sweet. // [iccu.com](https://www.iccu.com)

4



“The Holland”

8132 Fountain Brook Street Middleton ID

By Iron Oak Homes

“The Holland” offers a single-level, efficient layout with 3 beds, 3 baths and 3 car garage. Homeowners love the ease of connectivity between laundry and huge master closet. Enjoy Sunday morning coffee on the private covered Master Suite patio. The gorgeous custom trim work, including the Master Suite headboard, gives this home an extra pop. 10’ ceilings, custom soft close cabinets-to-the-ceiling and high-end appliances are just a few of the luxuries you’ll find in this stunning home! Located in a serene waterfront community, Crescent Lake!

Builder: Braxton Hanson 208-510-7456

Subdivision: Crescent Lake

Realtor: SLJ Shaun & Lisa J. Realty

Interior Designer: Jessica Hillman, Iron Oak Homes

Developer: Skyline Homes

Sq. Footage: 2,054 / RCE-49692



INSTANT INFO

TEXT TO: **88000** MSG: **SRV4**



Powered by drivebytech.com

YOUR DREAM HOME AWAITS

100 combined years of experience in the home building industry.

**HIGH-QUALITY HOMES • STYLISH DESIGNS
FUNCTIONAL FLOOR PLANS**

Thanks to our amazing clients who become family!

1940 S Bonito Way, Ste 170 | Meridian, ID
208-510-7450

IRONOAKHOMES.COM



Modern Country Living

BRITTANIA HEIGHTS

A HAWKINS HOMES COMMUNITY



BERKSHIRE HATHAWAY
HomeServices

Silverhawk Realty

LUXURY
COLLECTION

Brittania Heights is a remarkable new home development centrally located between Nampa and Meridian in the heart of Treasure Valley. With a tranquil setting and inspired by modern-country living, Brittania Heights' homes are ornamented with stone elements and rustic wood, highlighting their scenic views. Homesites are ideal for RV garages and open space. Located minutes from the Ten-Mile Interchange and Nampa-Gateway Shopping Center, ensures city amenities are never far away.



M&S HOMES



BROOKSTONE CUSTOM HOMES

SAM HUFF
Manager, GRI

208.724.2025
sam@silverhawkrealty.com

www.justIMAGINEidaho.com

A member of the franchise system of BHH Affiliates, LLC

just
IMAGINE
idaho.com

TRACY KASPER
Broker/Owner, CRS, CIPS, SFR, GRI

208.867.2709
tracy@justIMAGINEidaho.com

www.justIMAGINEidaho.com



You have the
Power to Save
energy and money.

Idaho Power's Residential New Construction Pilot Program

offers builders a cash incentive to build energy-efficient, all-electric single-family homes with heat pumps.

Building an energy-efficient home provides increased comfort, lower maintenance costs and a healthier environment.



idahopower.com/newhomes

NAMPA

APPLIANCE TV & MATTRESS



*G*orgeous design, impeccable craftsmanship, flawless attention to detail, Energy Star certified efficiency. This is why **Nampa Appliance TV & Mattress** is proud to offer **Bosch & Thermador** appliances. We invite you to come experience our new kitchen design center home today!

.....
278 Caldwell Blvd • Nampa, ID • 83651

208.465.0551 • www.nampabrandsource.com
.....

Monday - Friday 9-7, Saturday 10-6, Sunday Closed



Keep Building

Did you know? Our Nampa location hosts a full-service lumberyard. Stop by and see what we have to offer.

MON-FRI 7:30 AM-5:30 PM
SATURDAY 8 AM-5 PM

412 2ND ST SOUTH
NAMPA, IDAHO 83651

(208) 466-2463
WWW.SUNPRO.BUILD



MORE THAN JUST HARDWARE

Lumber • Doors • Millwork • Windows
Siding • Decking • & Much More!



Give Yourself Room to Bloom.

Complete your mortgage online in minutes at p1fcu.org and make your dream home into a reality.



NMLS ID #527990





“The Buckaroo”
20151 Carbondale Avenue Caldwell ID
 By Stetson Homes, Inc.



Welcome home to the gorgeous rustic farmhouse “The Buckaroo” By Stetson Homes, Inc. This One-of-a-kind custom home is sure to impress with its open rail balcony overlooking the grand 17’ entry to the open concept living. This house features 5 bedrooms with an additional Den and a bonus area, 3 ½ baths, 2nd floor laundry, and a 3-car garage.

You get all of this and a community! Mandalay Ranch Community offers a private community pool, park and play area, and Creekside walking trails for an active lifestyle.

- Builder:** Rustin Ray 208-608-8231
- Subdivision:** Mandalay Ranch
- Realtor:** Dawn Mitchell, Fathom Realty 208-514-8800
- Draftsman:** Draftech
- Financed by:** Homestreet Bank
- Interior Designer:** Stetson Homes
- Sq. Footage:** 3,337 / RCE-899

INSTANT INFO
 TEXT TO: **88000** MSG: **SRV5**
Powered by driftytech.com




STETSON HOMES, INC.
Quality you can hang your hat on
 RCE-899

Mitchell
 real estate

 Now taking reservations in Phase 2 to build your custom home with Stetson Homes 208.514.8800

PORTAPros

Call us at (208) 467-0089 or find us online at portapros.com

PortaPros is the Treasure Valley region's top choice for clean portable restrooms and temporary fencing with local, reliable service.

Visit portapros.com to request a quote or rent online.



Featuring PIRouETTE® WINDOW SHADINGS BY

HunterDouglas 

15% OFF your order when you mention this ad

The BLIND GALLERY 

- We will beat any competitor's price
- Complimentary in-home consultation
- Complimentary measure and install
- Lifetime warranty
- Showroom Gallery
- In-house installers
- Authorized Repair Center
- Showroom Gallery

2031 E. Fairview Avenue, Suite 101
Meridian, ID 83642
208.884.8684



25 Years of Building Excellence Throughout the Valley

Founded in 1997, Hubble homes has grown to be one of the largest home builders in Idaho and U.S. Hubble is excited to celebrate 25 years of success as we continue building new homes throughout the Treasure Valley.

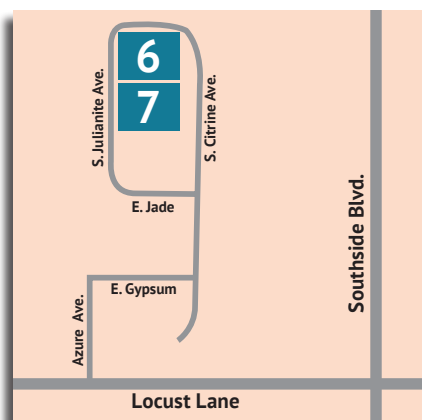
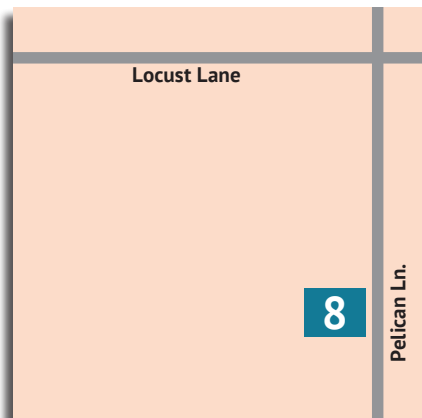
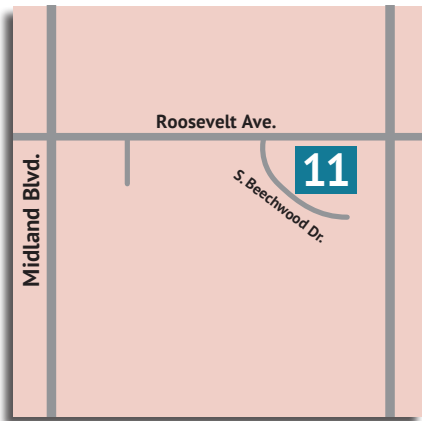
In our Valley Communities, you'll discover innovative new home designs with beautifully crafted interior features. Our plans offer a wide variety of options including home office, flex room, dual living, guest bedrooms, RV garages and more!

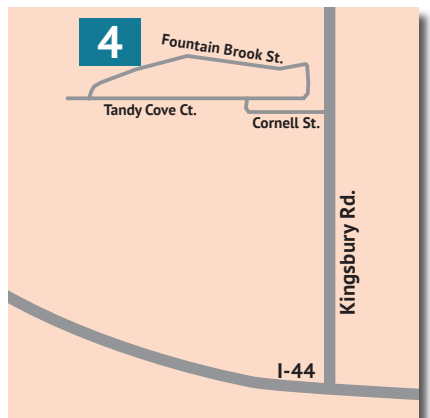
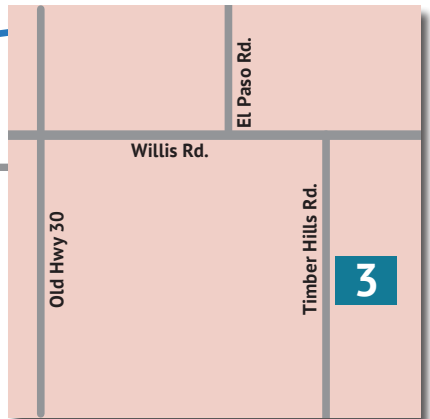
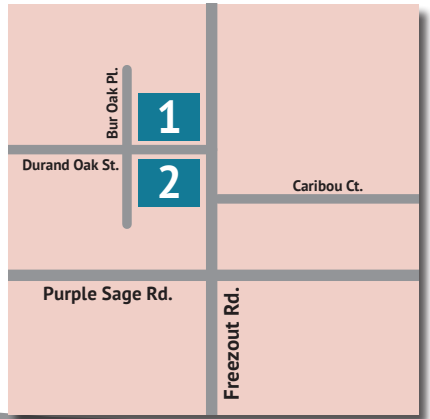


Find Your New Home at [HubbleHomes.com](https://www.HubbleHomes.com)

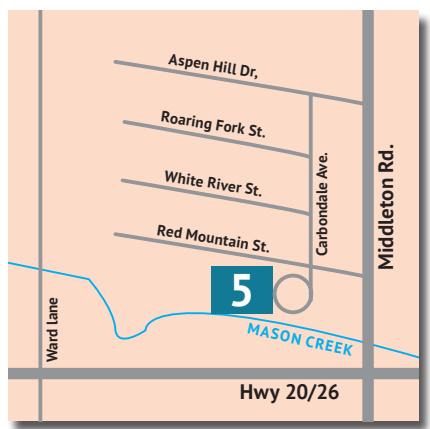
208.433.8800 | Hubble Homes, LLC. RCE-049







- | | |
|----------------------|---------------------------------|
| 1 Idaho Impact Homes | 7 Iron Oak Homes |
| 2 Idaho Impact Homes | 8 Swaggart Wood Properties, LLC |
| 3 Blackstone Homes | 9 Hunter Homes |
| 4 Iron Oak Homes | 10 Berkeley Building Co. |
| 5 Stetson Homes | 11 Gingrich Homes |
| 6 Hathaway Homes | |





Lava Falls



NEW HOMES WITH RV BAY GARAGES AND ACCESS TO THE NAMPA GREENBELT
CLOSE-BY, SO YOU CAN ENJOY THE LIFE YOU'VE ALWAYS DREAMED OF!

VISIT LAVAFALLSNAMPA.COM FOR FULL AVAILABILITY.



43° NORTH  

LISA J. CUNNINGHAM | 208.562.7887

NEW CONSTRUCTION SPECIALIST, REALTOR®

SHAUN URWIN | 208.989.4811

NEW CONSTRUCTION SPECIALIST, REALTOR®



YOUR HOME IS YOUR SANCTUARY

Let's make your dream home a reality.



B&B Custom Homes is a local home builder who specializes in custom built homes on acreage properties. 1+ acre lots now available in Weatherby Estates in Nampa, Idaho.

TYLER BOSIER
208.890.4657

ALISON FULLER
208.409.0870

 B&B CUSTOM HOMES

 @CUSTOMHOMESBB

RCE-41686



www.CustomHomesBB.com

NATIONAL STRENGTH, HOMETOWN SERVICE.

Fairway is here to help with your home financing needs!



Contact your
local office today!

FAIRWAY INDEPENDENT MORTGAGE CORPORATION

Franklin Road Branch
NMLS #1644377
5660 E. Franklin Road, Suite 120
Nampa, ID 83687
208-803-0285

Merchant Way Branch
NMLS #1734083
16130 N. Merchant Way, Suite 125
Nampa, ID 83687
208-606-0985



Copyright©2022 Fairway Independent Mortgage Corporation. NMLS#2289. 4750 S. Biltmore Lane, Madison, WI 53718, 1-866-912-4800. Other restrictions and limitations may apply. All rights reserved. Equal Housing Opportunity.



FW 390031

6



“The Wallowa”

3608 S. Julianite Avenue Nampa ID

By Hathaway Homes, Inc.

The Wallowa w/RV features four bedrooms, three full bathrooms and a bonus room. This home welcomes you with 9ft ceilings, laminate wood flooring throughout the main living area, open concept entertaining space, upgraded millwork, quartz countertops and custom tile work in the master bath. Relax and entertain on the large, covered patio with 11 ft ceilings. All of your toys and hobbies will fit in the 1,300 sq ft garage with a 50 ft deep RV bay! Enjoy the savings with our energy efficient HERS-rated home.

Builder: Greg Hathaway, 208-407-9723

Subdivision: Lava Falls

Realtor: Shaun Urwin at 43 Degrees North Better

Homes & Garden RE 208-989-4811

Sq. Footage: 2,394 / RCE-51774



INSTANT INFO

TEXT TO: 88000 MSG: SRV6



Powered by drivebytech.com

208.475.3304



@HATHAWAYHOMESIDAHO

WE MAKE THE HOME OF YOUR DREAMS A REALITY

— Building Homes Since 2003 —



HATHAWAYHOMESIDAHO.COM



WATERPROOF FLOORING • HARDWOOD • CARPET • GRANITE • TILE

Your Style Your Vision Our Business

Quality valley builders and designers count on us,
and have for over 65 years!



www.nampafloors.com



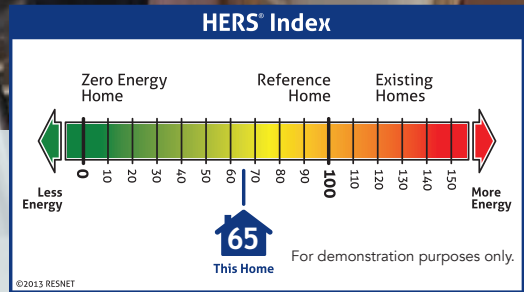
Proudly family owned for three generations.

An *affordable* natural gas home built with *energy efficient* design.
 Now you're cooking with gas!



A natural gas home provides affordable, safe and clean energy . A HERS scored home delivers lower energy bills, increased comfort, and higher resale values. Together, they make your home-buying decisions a little easier. Look for the HERS Index Score to measure a home's energy performance, and remember, the lower the score the greater your energy savings!

Learn more about Intermountain Gas energy efficiency benefits, rebates, and incentives at www.intgas.com/saveenergy/.



Want to know how efficient a home truly is? Look for the HERS® Index score.



www.intgas.com





"The Bryson"

3624 S. Julianite Avenue Nampa ID
By Iron Oak Homes



"The Bryson" by Iron Oak Homes is a true 4 bed, 3 bath, 3 car home located in Lava Falls. Enjoy the benefits of a community coupled with the feeling of country-living. Outdoor living is made easy with the massive, covered patio stretching across the back of this beautiful home. A few gorgeous touches sprinkled throughout such as custom trim work, marble tile details, brick masonry finishing touches, and solid surface quartz countertops throughout. The full marble fireplace and spa-like Master Bathroom are showstoppers in this incredible home!

Builder: Braxton Hanson 208-510-7456

Subdivision: Lava Falls

Realtor: SLJ Shaun & Lisa J. Realty Shaun 208-989-4811/Lisa 208-562-7887

Interior Designer: Jessica Hillman, Iron Oak Homes

Sq. Footage: 2,612 / RCE-49692

INSTANT INFO

TEXT TO: **88000** MSG: **SRV7**

Powered by drivebytext.com



Your complete home financing solution.

Purchase | Refinance | Renovation | Construction



Sam Newell

Branch Manager / Senior Loan Officer
NMLS 9027
(208) 794-3080

Corey Newell

Loan Officer
NMLS 24591
(208) 571-1892

Ana Flores

Loan Officer
NMLS 410664
(208) 697-7423

Kendra Graybeal

Loan Officer
NMLS 924381
(208) 861-7775

Alison Gillespie

Branch Production Manager
NMLS 707593
(208) 321-4300

**Contact us to learn more
about financing options with
Evergreen Home Loans.™**

evergreen
HOME LOANS

(208) 321-4300

3515 E Overland Road
Meridian, ID 83642



© 2020 Evergreen Home Loans is a registered trade name of Evergreen MoneySource Mortgage Company® NMLS ID 3182. Trade/service marks are the property of Evergreen Home Loans. All rights reserved. Licensed under: Idaho Mortgage Broker/Lender MBL-3134.04/20

Give
as
you
go™

Building hope and homes in
Oregon, Washington, and Idaho



Hayden's mother, Virginia, did more than help found our company: she found the spirit of generosity in everyone she met. She knew a shoulder to lean on was stronger than any 2x4. And that leading by example was the greatest gift of all. For 30 years, we've partnered with nonprofits, provided the dream of homeownership to deserving families, and empowered every team member to be the next generation of givers. We call it GIVE AS YOU GO. It turns out Virginia was right. The more we give, the more grateful we are.

Thank you, Virginia

NEW HOMES FROM THE \$400s
HAYDEN-HOMES.COM



IDRCE29144

“Window Treatments with a Personal Feel”



Blinds
Shutters
Roller Shades
Cell Shades
Roman Shades
and more!

BlindAppeal.com



208-888-1056



Motorized:
Solar Shades
Awnings
Horizon Shades
Louver Pergolas
and more!

APPEAL
for life...for real



“Modern Prairie”
10855 Pelican Lane Nampa, ID
 By Swaggart Wood Properties, LLC

Welcome Home to the peace and serenity of Pelican Lane! Enjoy upscale country living with views of neighboring vineyards in this “Modern Prairie” design. Amazing single level plan featuring: 50’ RV garage; casita-style guest suite with private entrance; master suite with dual walk-in closets; soaring 16’ ceilings; custom beams; expansive great room with spectacular kitchen that boasts Wolf and Sub-Zero appliances, and a grand island; outdoor kitchen and expansive entertaining space that takes full advantage of the gorgeous views; over-the-top 2.5 acre landscaping.

Builder: Marcus Wood & Logan Swaggart 208-369-8860
Subdivision: Pelican
Realtor: Chris Lofthus, Lofthus Group, LLC 208-571-3360
Sq. Footage: 3,068 / RCE-58161



INSTANT INFO
 TEXT TO: **88000** MSG: **SRV8**
Powered by drivebytext.com




Proudly represented by:
MOIR & COMPANY
REAL ESTATE

208-850-7495






SWAGGART WOOD
 Properties LLC

SwaggartWood.Com

- Excellence in craftsmanship
- True custom builds
- We'll build on your lot or ours



OUTPERFORM TODAY. TRANSFORM TOMORROW.

Let us help you with building your dream home. We offer top-quality products with our extensive selection of windows, doors, millwork, lumber, trusses, designer hardware, siding and decking. With Builders FirstSource, you get the quality the pros trust with service you can count on.

Product specialists available for professional showroom consultations by appointment.

VISIT US AT BLDRIDAHO.COM

- **BOISE LUMBER**
11670 West Franklin Road, Boise, ID 83709
meridiansales@bldr.com | (208) 376-5500
- **BOISE MILLWORK**
11670 West Franklin Road, Boise, ID 83709
meridiansales@bldr.com | (208) 888-1457
- **MERIDIAN LUMBER**
415 East Broadway, Meridian, ID 83642
customerservice@bldr.com | (208) 888-1457



DREAM • DESIGN • BUILD



 **@builtbytamarack**

www.Builtbytamarack.com

TAMARACK

CONSTRUCTION

DREAM ■ DESIGN ■ BUILD

PERFECT LOT, PERFECT PLANS?

We've got a loan for that!

Building a new home should be fun, not a hassle. Finding the perfect lot, the right house plan, and choosing colors can cause stress – but your financing shouldn't.

At First Federal Bank, we've simplified the construction lending process with our Construction-Permanent loans. You'll have one loan, one set of closing costs, and one financing rate through the entire process.



All credit products subject to approval.
Institution NMLS#402963

If you're ready to go from lot to home with one loan, visit your closest First Federal branch, give us a call, or visit **BankFirstFed.com** and apply today!

(208) 985-2555

1880 S. Eagle Road & 6351 N. Fox Run Way, Meridian





MILLENNIUM
LIGHTING

MAKE THE MOST OF HOME

YOUR LOCAL SHOWROOM: MERIDIAN

Shop online or schedule a personalized appointment from the comfort of your home today at [fergusonshowrooms.com](https://www.fergusonshowrooms.com).

FERGUSON
Bath, Kitchen & Lighting Gallery

Toll Brothers
AMERICA'S LUXURY HOME BUILDER™

community
SHOWCASE



Get an inside look at the most beautiful homes in Idaho

You don't have to wait for a special event to tour beautifully decorated model homes. Visit Toll Brothers Idaho communities any time and explore designer-curated models offering endless inspiration for creating a dream home of your own.

Start your new home search today.

[LuxuryLivinginIdaho.com](https://www.luxurylivinginidaho.com) | 208-780-6729



Toll Brothers reserves the right to change price, specifications and details at any time. Represented by Toll Brothers Real Estate, Inc. RCE43104





IDAHO FIRST BANK

Want to Buy? Want to Build?
We Can Help!

Mortgage • Construction • HELOC
First Time Home Buyer • Refinance

CONTACT US TODAY AT
208.854.8180
idahofirstbank.com

Member FDIC



SOLAR CONCEPTS


Present this AD for \$40 off installation
Ends 9-30-2022

- Solatubes
- Attic Fans
- Skylights
- Whole House Fans

SOLATURE
Daylighting Construction Certified Specialist
Premier Dealer
2053 E. Fairview
Suite 104 • Meridian




(208) 377-8399  solar-concepts.com



BRUNDAGE-BONE
SAFETY • PEOPLE • RELIABILITY

**Proudly Supports
Canyon County's Certified
Master Builders**

- Berkeley Building Co. -
SRVBCA PARADE HOME #10
- Brighton Homes
- Tresidio Homes



CERTIFIED MASTER BUILDER

For more information visit
www.ibca.org/certified-master-builders

Make room for memories. Build. Buy. Refinance.

CONSTRUCTION AND MORTGAGE LOANS



Charlie Connolly
VP Commercial
Loan Officer
Tel 208.442.1011



Don Lillie
Mortgage Loan Officer
Cell 208.794.6394



Lenny Frings
VP Regional Sales Manager
Cell 208.861.4780



Ismael Cerros
Mortgage Loan Officer
Cell 208.590.5780

Visit dlevans.com/mortgage to apply today!




D.L. Evans
BANK



“Darci”
1255 W. Tenzing Court Nampa ID
 By Hunter Homes

Welcome to the beautifully designed “Darci” by Hunter Homes. Featuring modern touches and timeless beauty throughout, the Darci boasts hardwood flooring, top of the line appliances and gorgeous stonework. Spacious, open, and functional split bedroom layout, home office and upstairs bonus with full bathroom and storage room. Elegant primary suite with luxurious bathroom and walk-in closet with convenient access to the laundry. To complete this incredible custom home, the Darci has a 44’ deep RV bay with a 14’ tall door. The covered patio makes this home an entertainer’s dream.

- Builder:** Steve Edwards 208-573-1040
- Subdivision:** Summit Ridge
- Developer:** M3 Properties, LLC
- Realtor:** Mike Moir 208-850-7495, Moir & Co. at Fathom Realty
- Drafter:** Draftech
- Financed by:** Home Street Bank
- Sq. Footage:** 2,489 / RCE-813



INSTANT INFO
 TEXT TO: **88000** MSG: **SRV9**
Powered by driftytech.com




H
HUNTER HOMES
 RCE 813
 WE BUILD ON OUR LOT OR YOURS

H
 HUNTER HOMES
 RCE 813

Building Dream Homes Since 2000 208.573.1040

PHASE 2 NOW OPEN



BERKSHIRE HATHAWAY
HomeServices

Silverhawk Realty

LUXURY
COLLECTION

One Acre Country View Lots

Now Taking Lot Reservations!



TAMARACK CONSTRUCTION



COTNER BUILDING COMPANY



PROMINENT HOMES



LARRY RICHARDSON CONSTRUCTION

SAM HUFF
Manager, GRI

208.724.2025
sam@silverhawkrealty.com
www.justIMAGINEidaho.com

A member of the franchise system of BHH Affiliates, LLC



TRACY KASPER
Broker/Owner, CRS, CIPS, SFR, GRI

208.867.2709
tracy@justIMAGINEidaho.com
www.justIMAGINEidaho.com



MLD

Appliances | Plumbing | Hardware

Boise & Ketchum

MLD.COM

FAST. RELIABLE. DEMAND BOTH FROM YOUR INTERNET.

When it comes to the Internet, nothing beats fast. And with speeds up to 1 Gig, that's just what Sparklight delivers. But what good is speed without reliability? That's why Sparklight's fiber-powered network also delivers whole home Wifi coverage, so you can enjoy all that speed, whenever you want it. Fast. Reliable. Demand both.

Sparklight. A stronger connection.



Dedicated local service for your developments

Brian Royster | Community Relations Mgr.

Brian.Royster@sparklight.biz

Sparklight[®] sparklight.com/gig

Up to 940 Mbps download and 50 Mbps upload speeds.
Visit sparklight.com/gig for details.



WALTMAN HOMES

CUSTOM HOME BUILDERS

WWW.WALTMANHOMES.COM



2022
Best of Houzz
Design

2021
Best of Houzz
Design

2020
Best of Houzz
Design

BEACON
REAL ESTATE



BRE-39390



UMPQUA BANK Home Lending



Marc Renz
Producing Branch Manager
NMLS # 97854
208-703-1143
MarcRenz@UmpquaBank.com
Umpquabank.com/Marc-Renz



Kevin Spencer
Loan Officer
NMLS # 3401
208-484-0085
KevinSpencer@UmpquaBank.com
Umpquabank.com/Kevin-Spencer



Ken Stackpoole
Loan Officer
NMLS # 13538
208-869-7014
KenStackpoole@UmpquaBank.com
Umpquabank.com/Ken-Stackpoole



Sabrina Polfer
Loan Officer
NMLS # 404755
208-850-1511
SabrinaPolfer@UmpquaBank.com
Umpquabank.com/Sabrina-Polfer



Nate Stauffer
Loan Officer
NMLS # 2251416
208-880-4250
NateStauffer@UmpquaBank.com
Umpquabank.com/Nate-Stauffer



Robert Clark
Loan Officer
NMLS # 2018726
208-204-9099
RobertClark@UmpquaBank.com
Umpquabank.com/Robert-Clark

Equal Housing Lender Member FDIC || NMLS # 4018967



“Carson”
1194 W. Tenzing Court, Nampa ID
 By Berkeley Building Co.

Enjoy gazing out upon the horizon from this light, warm, classically reimagined showstopper. The new single-level Carson by Berkeley Building Co. elevates the open concept with all shared living and entertaining spaces anchored by a vast glass sliding door that draws your eye across a beautiful Valley view. Add an extensive covered, outdoor living space and a practical RV garage to house everything you may need when you dare venture out, this home checks all the boxes in the stunning Summit Ridge new home community.

- Builder:** Joe Atalla & Jenna Englund
- Developer:** M3 Companies
- Realtor:** Mike Moir 208-850-7495, Fathom Realty Moir Team
- Interior Designer:** Berkeley Building Co.
- Subdivision:** Summit Ridge
- Sq. Footage:** 2,224 / RCE-58490

INSTANT INFO
 TEXT TO: **88000** MSG: **SRV10**
Powered by drivebytext.com




*Because there is
Magic to be Found
 in Your Everyday*

Proudly building in:



FOLLOW US ON SOCIAL:
@BERKELEY BUILDING CO. Thoughtfully building homes with so much more than just square feet.

ARBOR



NEW HOMES COMING THIS SUMMER!

Arbor is perfectly situated near schools, shopping, restaurants with easy access to many locations around the Valley. Within minutes, you are close to everything you may need. New home sites in Phase 3 will become available this summer.

perfect for **FAMILY. FUN. FRIENDS.**

yourarborlife.com



 **BRIGHTON**

BrightonHomes-Idaho.com | 208.908.7533



RCE-885



**Craig
Bradshaw**
208.989.0370

**Sallie
Bradshaw**
208.371.3037

Represented by **Heidi Bradshaw**
208.859.7082

Are You Ready to Build your Dream Home? Call Us Today!



5-TIME 2021 PARADE OF HOMES WINNER!

www.gobradshawconstruction.com

On the fence about selling?



CALL ME FOR A
FREE
HOME EVALUATION

Melanie 
STEINHAUS

HOMES OF IDAHO
208.880.5443



11



“Brooklyn”

128 S. Beechwood Drive Nampa ID

By Gingrich Homes

Welcome to the “Brooklyn” model by Gingrich Homes. This home boasts detailed millwork throughout, coffered ceilings with stained beams and custom accent barn doors. The kitchen features beautiful quartz countertops and custom cabinetry along with a large 8’ island. The spacious owner’s suite and closet are separated by a luxurious master bathroom. This open concept floorplan has plenty of space for guests to enjoy along with a large patio. You’ll find quality and attention to detail throughout this home.

Builder: Tyler Gingrich 208-995-3961

Subdivision: Hardwood Estates

Realtor: Kathy Parker, Silver Creek Realty 208-869-7537

Developer: Water Towers LLC

Interior Designer: Gingrich Homes

Draftsman: Draftech

Sq. Footage: 2,360 / RCE-51774



INSTANT INFO

TEXT TO: **88000** MSG: **SRV11**



Powered by drivebytech.com

MAKING DREAM HOMES A REALITY FOR THREE GENERATIONS



GINGRICH HOMES
CUSTOM HOME BUILDER



FOLLOW US ON FACEBOOK AND INSTAGRAM @GINGRICHOMES

RCE-51774



Design - Build - Commercial - Consulting

Building Dreams One Home at a Time

Randy Neary 208-573-5268

solidrockhomes.net

Trusted everywhere,
every day.

You Know Our Name.
You Know Us, Too.

At Fidelity, we're backed by the power of a national company.

But our strength is right here at home. We serve on non-profit boards, organize church gatherings, coach soccer games, plan school fundraisers. We're the friends you say hi to on the Greenbelt and the folks down the street. Our company may be well known. But to our neighbors, we're pure Idaho.

FNTidaho.com



Fidelity National Title
IDAHO



SPACIOUS COUNTRY LIVING IN NAMPA, IDAHO
NOW AVAILABLE

Homes Starting at 900k

15 1 Acre Lots • 2 Acre Common Area • Pressurized Irrigation • Well & Septic



weatherbyestates-nampa.com



**Better
Homes**
and Gardens.
REAL ESTATE

43° NORTH



Kayla
FEARN
REALTOR®

208.761.2487 | Kayla-Fearn@43re.com



Building a future for you and the community we serve.



Proudly building in: 
SUMMIT RIDGE



  FOLLOW US ON SOCIAL:

@BERKELEYBUILDINGCO

SCAN QR CODE TO LEARN
MORE ABOUT ST. JUDE

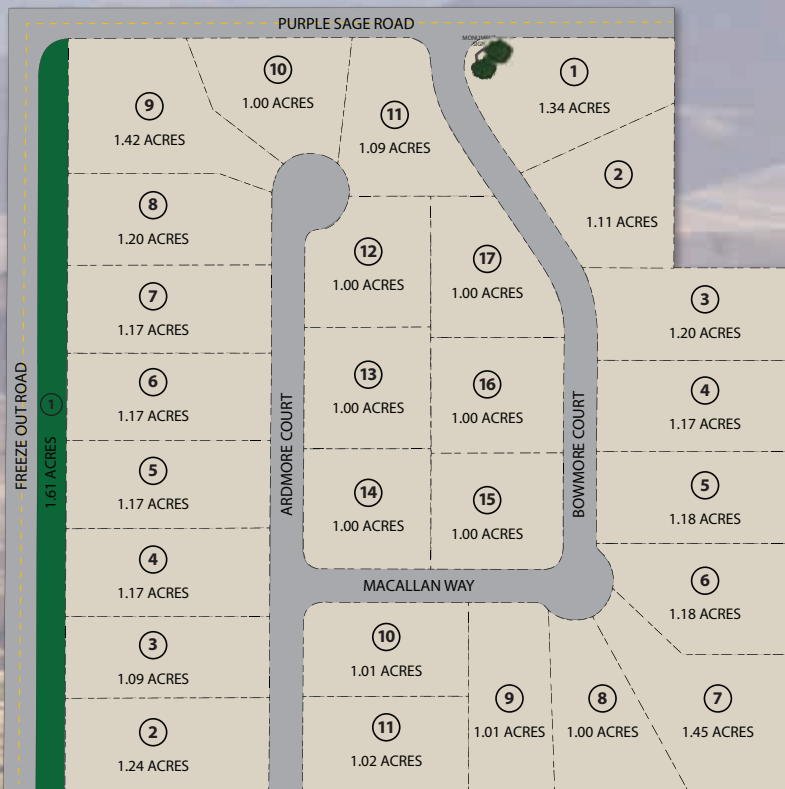
Experience Idaho

COUNTRY LIVING

Welcome To

Spring Hill

RANCH



**1+ ACRE PRIVATE LOTS
IN MIDDLETON**

CUSTOM BUILDERS

90 Degree Construction

Trident Homes

KW Homes

DBS Homes

Mike Reid Homes

River Rock Construction



Contact us to explore all of the possibilities!



**208 REAL ESTATE
IDAHO**



Jonny Newell
208.794.9110



Mike Madsen
208.830.3767

208BoiseRealEstate@gmail.com