




2023 Westmoreland County Chamber Tiered Dues Investment Options



**BUILDING BUSINESS.
CONNECTING COMMUNITIES.
EMPOWERING EVERYONE.**

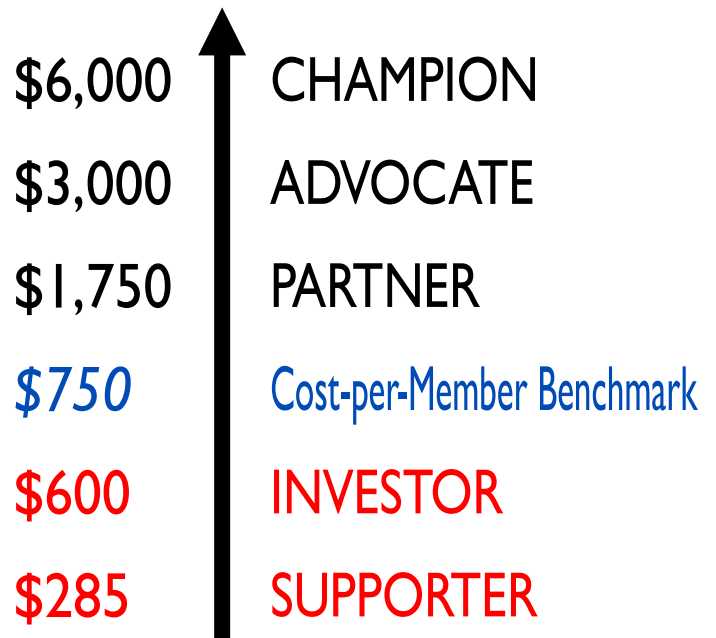
-  724-834-2900
-  info@westmorelandchamber.com
-  westmorelandchamber.com





“We are pleased to introduce more value than you’ve ever seen from the Chamber.”

Dan DeBone
Chamber President & CEO



THE CHAMBER OF COMMERCE WORKS HARD FOR YOU AND YOUR BUSINESS.

The Westmoreland County Chamber of Commerce works on behalf of its member companies to advocate for a healthier, more competitive business climate. As the largest business association in Westmoreland County – and as one of the largest Chambers in all of SWPA – our voice resonates when speaking about the interests of small and large companies across a myriad of industries.

Policy makers and elected officials from Westmoreland County, Harrisburg, and Washington D.C. look to the Westmoreland County Chamber for an unvarnished, non-partisan assessment of what is important to our business community.

SUPPORT OUR ABILITY TO STRENGTHEN OUR REGIONAL ECONOMY

CHAMPION **\$6,000** ANNUAL INVESTMENT

Your Champion membership offers exclusive positioning while supporting our work to strengthen the regional economy.

POSITIONING IN OUR REGION

- ✓ Total of 10 business location listings (\$2,850 Value)
- ✓ Permanent rotating logo on home page at westmorelandchamber.com
- ✓ Company Profile on Chamber website, written about your company's community footprint
- ✓ Invitation to Chamber Day in Harrisburg with our Board and Government Affairs Team
- ✓ Gift a membership to your favorite not-for-profit (\$285 Value)
- ✓ 3 months of logo/message on Chamber's LED Board along Rt. 30 (\$1,500 Value)
- ✓ 12 featured Blog Posts
- ✓ Job Postings on Chamber website

PLUS ALL OF THE SERVICES AND BENEFITS OF ADVOCATE, PARTNER, INVESTOR AND SUPPORTER LEVELS ON THE FOLLOWING PAGES



“Excela Health has long found great value in being a partner with the Chamber and the impact we collectively make to the betterment of Westmoreland County.”

John Sphon
Chief Executive Officer, Excela Health



SUPPORT OUR EFFORTS TO REPRESENT YOUR BUSINESS INTERESTS IN GOVERNMENT

ADVOCATE \$3,000

ANNUAL INVESTMENT



"Being a Chamber member has really opened doors for me. The Chamber staff has always looked out for my best interest, and they genuinely care about me and my company."

Marcus Morelli
Owner, Skene 19 Films

Your Advocate membership gives you and your team access to some of the most valuable programs and events in the region.

VISIBILITY IN OUR REGION

- ✓ Total of 6 business location listings (\$1,710 Value)
- ✓ 12-Month Online Advertising Package at westmorelandchamber.com (\$1,800 Value)
- ✓ 20 Monthly Luncheon Passes (\$580 Value)
- ✓ Pair of Tickets to State of the County Luncheon (\$80 Value)
- ✓ Pair of Tickets to Prayer Breakfast (\$50 Value)
- ✓ Holiday Bash & Business Expo Sponsor— Includes Table & 2 Tickets (\$300 Value)
- ✓ Job Postings on Chamber website



BUILDING BUSINESS. CONNECTING COMMUNITIES. EMPOWERING EVERYONE.

PLUS ALL OF THE SERVICES AND BENEFITS OF PARTNER, INVESTOR AND SUPPORTER LEVELS ON THE FOLLOWING PAGES

**This membership is not intended for companies of 100 employees or more.*

SUPPORT OUR ABILITY TO TAKE POLITICAL ACTION ON BEHALF OF YOUR BUSINESS

PARTNER **\$1,750** ANNUAL INVESTMENT

Your Partner membership puts your business among an elite group of investors helping the Chamber to further advance our mission.

BUILDING OUR COMMUNITY

- ✓ Total of 4 business location listings (\$1,140 Value)
- ✓ Pair of tickets to our Annual Board Mixer (*Invitation Only!*)
- ✓ Pair of tickets to the Annual Business Meeting & Awards Ceremony (\$80 Value)
- ✓ Early Registration to Signature Events (Golf Classic, Sporting Clays Shoot, Holiday Bash and more)
- ✓ 6-Month Online Advertising Package at westmorelandchamber.com (\$900 Value)
- ✓ 10 Monthly Luncheon Passes (\$290 Value)
- ✓ Job Postings on Chamber website

PLUS ALL OF THE SERVICES AND BENEFITS OF INVESTOR AND SUPPORTER LEVELS ON THE FOLLOWING PAGES

**This membership is not intended for companies of 75 employees or more.*



"As a new business striving to integrate ourselves into the community, our Chamber membership has been a vital resource for Live! Casino. The ability to connect with other local business leaders, and vendors has helped make our entry into the market an overwhelming success!"

Sean Sullivan
General Manager, Live! Casino



BUILDING BUSINESS. CONNECTING COMMUNITIES. EMPOWERING EVERYONE.

PROMOTING YOUR BUSINESS GROWTH AND OUR REGION AS A DESTINATION

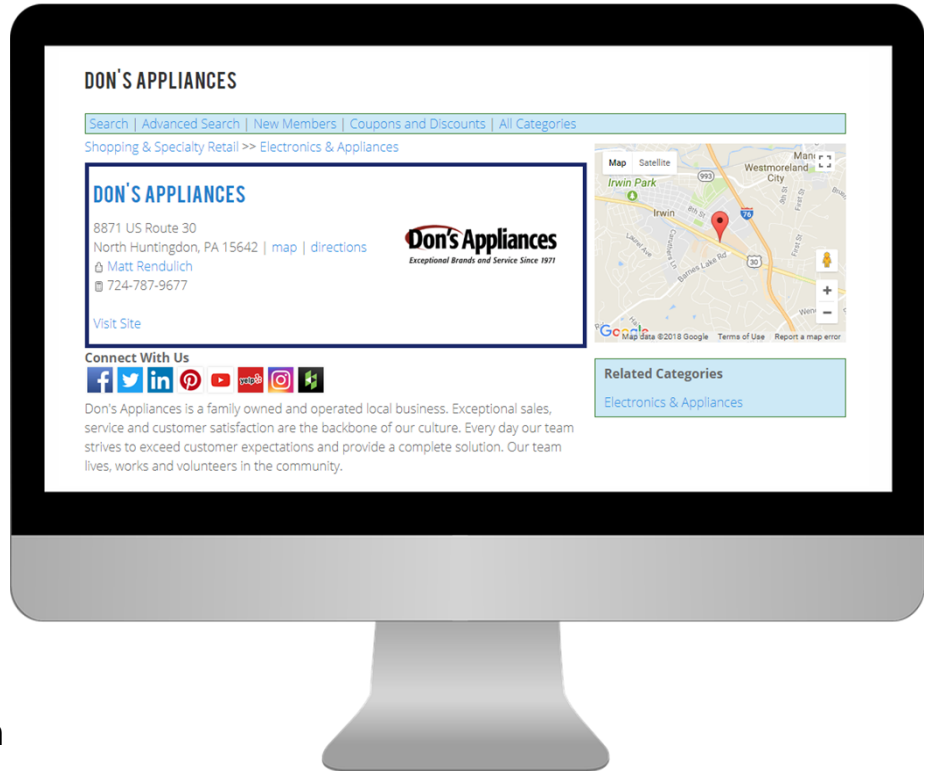
INVESTOR \$600

VALUED AT MORE THAN \$1,550 ANNUALLY

Investor members receive even more exposure built into your annual membership.

MARKETING VISIBILITY

- ✓ Total of 2 business location listings (\$570 value)
- ✓ Online Business Card in the business directory at westmorelandchamber.com (\$150-350 value) includes your logo or photo with your enhanced listing
- ✓ 2-Month Online Advertising Package at westmorelandchamber.com (\$300 value)
- ✓ Job Postings on Chamber website



- ✓ Your business featured in two of our Sponsor Spotlight e-blasts sent on the 15th of each month OR two flyer insertions into our monthly electronic newsletter (\$200 value)



**This membership is not intended for companies of 50 employees or more.*

PROVIDING NEW OPPORTUNITIES THROUGH CONNECTIONS AND RELATIONSHIPS

SUPPORTER \$285

VALUED AT MORE THAN \$900 ANNUALLY

■ **We Advocate for You**—The Westmoreland County Chamber of Commerce works on behalf of its member companies to advocate for a healthier, more competitive business climate. As the largest business association in Westmoreland County—and as one of the largest chambers in all of SWPA—our voice resonates when speaking about the interests of small and large companies across a myriad of industries.

■ **Referrals**—Our office receives thousands of phone calls, mail requests and website “hits” each year from local companies looking for vendors and from residents looking to connect with service providers. Only members of our organization are given as referrals to these potential customers.

■ **Networking, Networking, Networking**—Let’s face it, sometimes it all comes down to who you know. With an ever increasing number of local and global competitors, building strong business relationships is more important than ever before. The Westmoreland County Chamber works to provide a wide range of both structured and relaxed networking opportunities to help foster business relationships.

■ **Help Business Develop and Grow**—Chamber members have access to several resource tools aimed at counseling and educating small and mid-sized businesses. Through the Chamber’s relationship with area schools, SCORE, and the Small Business Administration, we are able to help businesses develop and grow. In addition, we offer a variety of member workshops on subjects like finance, marketing, technology, customer service and more.

■ **Ribbon Cuttings**—The Chamber is always delighted to help introduce a new business and spread the good news throughout Westmoreland County. Chamber members celebrating a grand opening, ground breaking, major facility remodel, or milestone anniversary are invited to let the Chamber help spread the word with one of our trademark Ribbon Cutting Ceremonies.

■ **Signature Events**—Successful business people know how to command a room and how to make their product or service known to others. By hosting over 125 events and programs each year, we give our members plenty of chances to meet prospective customers, entertain clients, reward employees, train staff, learn the latest techniques to make you more successful, and provide a platform to get your company the exposure you need to grow. From golf outings to elected officials forums and everything in between, we have a signature event just for you.

■ **Chamber Website**—Our website keeps members up-to-date with what’s happening in the Chamber and the community, and is a reliable resource for locating member information. The website includes contact information for each member and a direct link to the business’s website. The site also contains a calendar of events, news page, job board, community information, helpful links and more.

■ **Chamber Newsletter**—Published monthly and sent to approximately 2,500 email addresses, the Chamber’s newsletter highlights what is happening in and around our business community. Highlights include a calendar of upcoming events, photos and event reviews, and a Member Moves & Milestones section. Members are able to include a flyer highlighting their business or a special sale, event, or promotion.

■ **Member Emails**—Members are able to include information in the periodic member email blasts sent out to approximately 2,500 email addresses. Company information is included in the email as well as links to flyers, brochures, web address, etc.

**This membership is not intended for companies of 25 employees or more.*

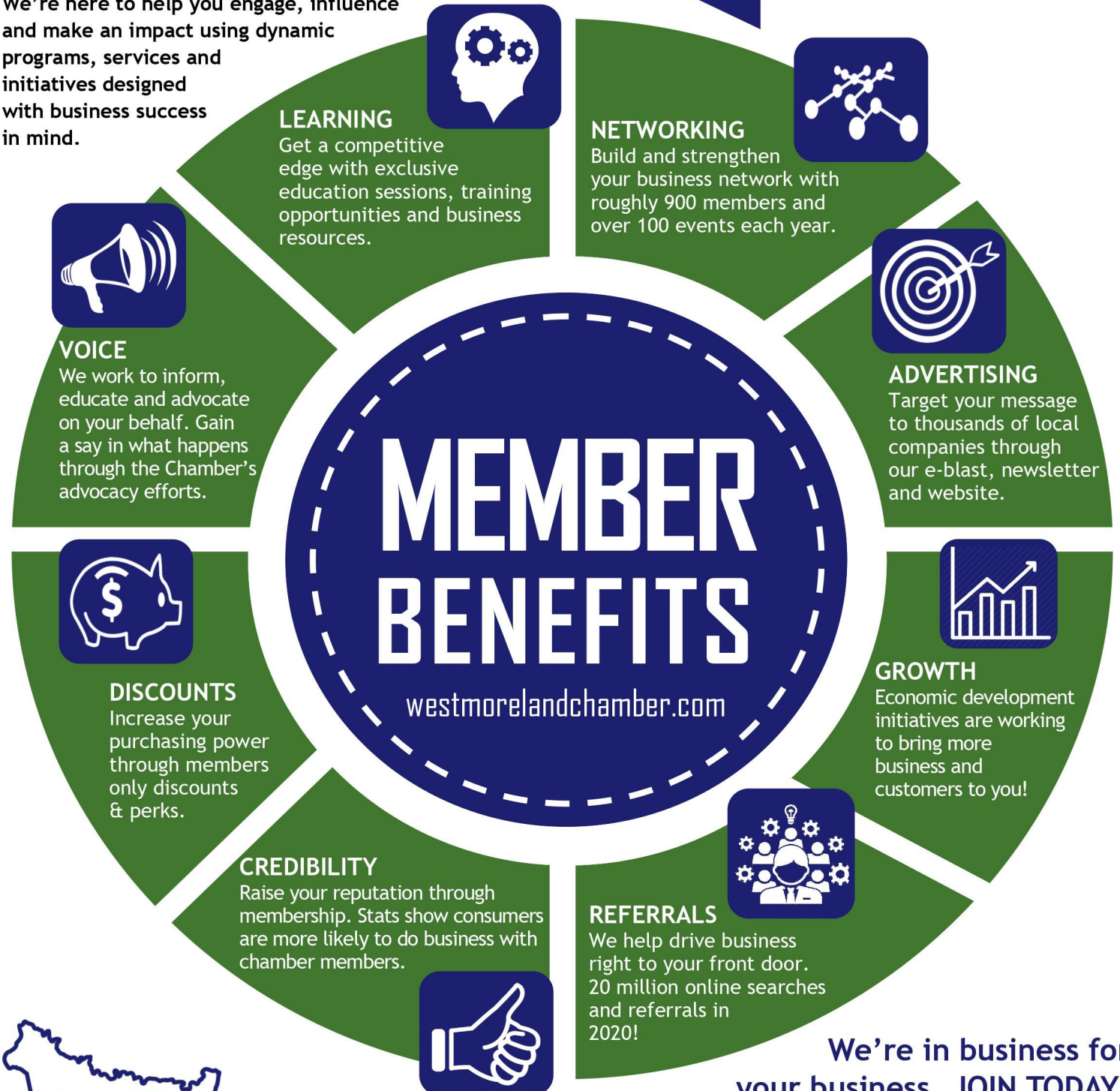


BUILDING BUSINESS. CONNECTING COMMUNITIES. EMPOWERING EVERYONE.

WHY JOIN THE CHAMBER?

The Westmoreland County Chamber of Commerce brings you innovative member benefits and programs that can make the most of your marketing dollar and provide measurable returns. We're here to help you engage, influence and make an impact using dynamic programs, services and initiatives designed with business success in mind.

Engage. Influence. Impact.



**Westmoreland County**
Chamber of Commerce
241 Tollgate Hill Road, Greensburg, PA 15601



We're in business for your business. **JOIN TODAY!**

Lisa Kennedy
Director of Membership
724-834-2900
lisa@westmorelandchamber.com